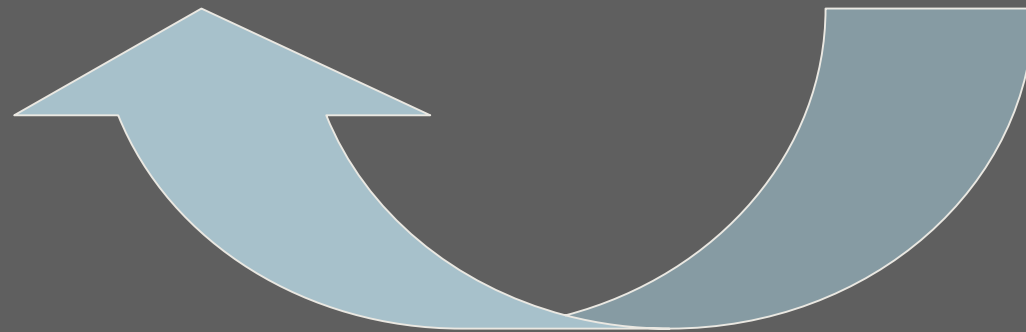


The CIP Process



What is the CIP?

- ⇒ The CIP is a six year capital improvements program that is prepared every two years
- ⇒ New or renovation projects over \$25,000
- ⇒ Useful life greater than 15 years
- ⇒ Includes smaller planned life asset replacement (PLAR) projects that increase the life of assets

Key Park CIP Dates

- ⇒ March 29th – CIP public forum jointly sponsored by Mont. Co. Planning Board (MCPB) and Mont. Co. Dept. of Recreation
- ⇒ July – Two Board Strategy Sessions
- ⇒ September – Two Board Work Sessions
- ⇒ November 1st – Parks Proposed CIP due per Article 28

Key Dates Cont'd...

- ⇒ January 16th – County Executive releases Recommended Capital Budget
- ⇒ February – County Council holds public hearings
- ⇒ Feb. - May – County Council and PHED committee reviews CIP
- ⇒ June 1st (even year) – County Council approves CIP



How do Projects Get in the CIP?

- ⇒ Variety of plans and studies, e.g. master plans, needs plan (Land Preservation, Parks and Recreation Plan (LPPRP))
- ⇒ Completed facility plans
- ⇒ Citizen requests at public forums, letters etc.
- ⇒ Park and Planning staff submit requests via the on-line CIP Request Form
- ⇒ Land acquisitions and developer park donations

Typical Development CIP Projects

⇒ Stand-alone projects

- Projects which have completed and approved facility plans
- Require County Council approval and appropriation
- May have operating budget impact

⇒ Level of effort projects

- Smaller projects that do not require extensive planning and design
- Less than \$225,000
- Consistent annual funding on LOE
- Candidate projects are reprioritized each fiscal year



Facility Planning Process

- ⇒ Needed when variables or options involved in a project do not support reliable independent cost estimating
- ⇒ A facility plan will produce a well-reasoned project cost estimate and preliminary design (1/3) as required by County Council
- ⇒ Preliminary Design may include:
 - Environmental studies
 - Topographic surveys
 - Traffic studies
 - Conceptual site plans
 - Schematic drawings
 - Cost estimates
 - And most of all...public input

Examples of Level of Effort Projects

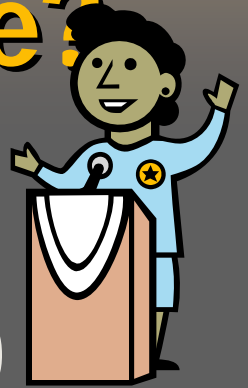
- ⇒ Minor New Construction
- ⇒ Stream Protection
- ⇒ Ballfield Initiatives
- ⇒ Restoration of Historic Structures
- ⇒ Roof Replacement
- ⇒ Energy Conservation
- ⇒ Pollution Prevention
- ⇒ Trails
- ⇒ PLAR
 - Playgrounds, tennis courts and minor renovations



Land Acquisition Projects

- ⇒ Local – urban and neighborhood parks
- ⇒ Non-local – regional, recreational, stream valley and conservation parkland
- ⇒ Legacy Open Space – identifies open space land of countywide significance that may be of exceptional natural or cultural value
- ⇒ ALARF – Advance Land Acquisition Revolving Fund used to acquire rights-of-way and other property needed for future public projects

How Can the Public Participate?



- ⇒ CIP public forum (March of odd years)
- ⇒ CIP public hearings (February of even years)
- ⇒ Public hearings for master plans and facility plans, and other MCPB hearings
- ⇒ Letters to MCPB, County Council, Park and Planning staff.

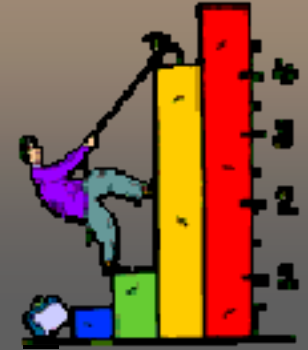
Typical CIP Funding Sources

- ⇒ Park and Planning bonds
- ⇒ County General Obligation bonds
- ⇒ State Bond bills
- ⇒ Program Open Space
- ⇒ Contributions, grants and donations
- ⇒ Enterprise funds

FY07-12 Park CIP

- ⇒ Original Adopted CIP \$170,653,000
- ⇒ Current Adopted CIP - \$184,558,000 (POS)
- ⇒ Adopted FY05-10 CIP \$140,294,000
- ⇒ Current CIP is \$44 million or 32% higher than previous CIP

Factors to Consider in Developing CIP



- ⇒ Fiscal Capacity –
 - Available funding sources
 - Spending Affordability Guidelines (SAG)
 - Local Projects – SAG limits on Park and Planning Bonds
 - GO Bonds – all Mont. Co. agencies compete for same funding and SAG
- ⇒ Balancing a growing backlog of projects with new priorities and needs
- ⇒ Executive's Readiness Criteria
- ⇒ Implementation capability (limited resources, permitting, other projects)
- ⇒ Operating budget impact (OBI)

Executive's Readiness Criteria

- ⇒ Documented evidence of need?
- ⇒ Scope and capital costs are defined?
- ⇒ Site proposed and environmental assessment?
- ⇒ Alternatives presented?
- ⇒ Implementation schedule included?
- ⇒ Compliance with laws?
- ⇒ Compliance with master plans?
- ⇒ Interested parties listed?
- ⇒ Public input sought?
- ⇒ OBI comprehensive?
- ⇒ All funding sources investigated?