

Figure 8.
**How Residential Suburbs Meet the National Register
Criteria for Evaluation**

Criterion A

- Neighborhood reflects an important historic trend in the development and growth of a locality or metropolitan area.
- Suburb represents an important event or association, such as the expansion of housing associated with wartime industries during World War II, or the racial integration of suburban neighborhoods in the 1950s.
- Suburb introduced conventions of community planning important in the history of suburbanization, such as zoning, deed restrictions, or subdivision regulations.
- Neighborhood is associated with the heritage of social, economic, racial, or ethnic groups important in the history of a locality or metropolitan area.
- Suburb is associated with a group of individuals, including merchants, industrialists, educators, and community leaders, important in the history and development of a locality or metropolitan area.

Criterion B

- Neighborhood is directly associated with the life and career of an individual who made important contributions to the history of a locality or metropolitan area.

Criterion C

- Collection of residential architecture is an important example of distinctive period of construction, method of construction, or the work of one or more notable architects.
- Suburb reflects principles of design important in the history of community planning and landscape architecture, or is the work of a master landscape architect, site planner, or design firm.
- Subdivision embodies high artistic values through its overall plan or the design of entrance ways, streets, homes, and community spaces.

Criterion D

- Neighborhoods likely to yield important information about vernacular house types, yard design, garden- ing practices, and patterns of domestic life.

In certain cases, a single home or a small group of houses in a residential subdivision may be eligible for National Register listing because of outstanding design characteristics (Criterion C) or association with a highly important individual or event (Criterion A or B).

Decisions about significance, integrity, and boundaries depend on the historical record as well as the presence of physical features of subdivision design and housing. Aspects of design such as spatial organization present in the general plan of development, the layout of streets and pedestrian paths, and the arrangement of house lots, may be important as indicators of historic patterns of development as the styles or design of housing.

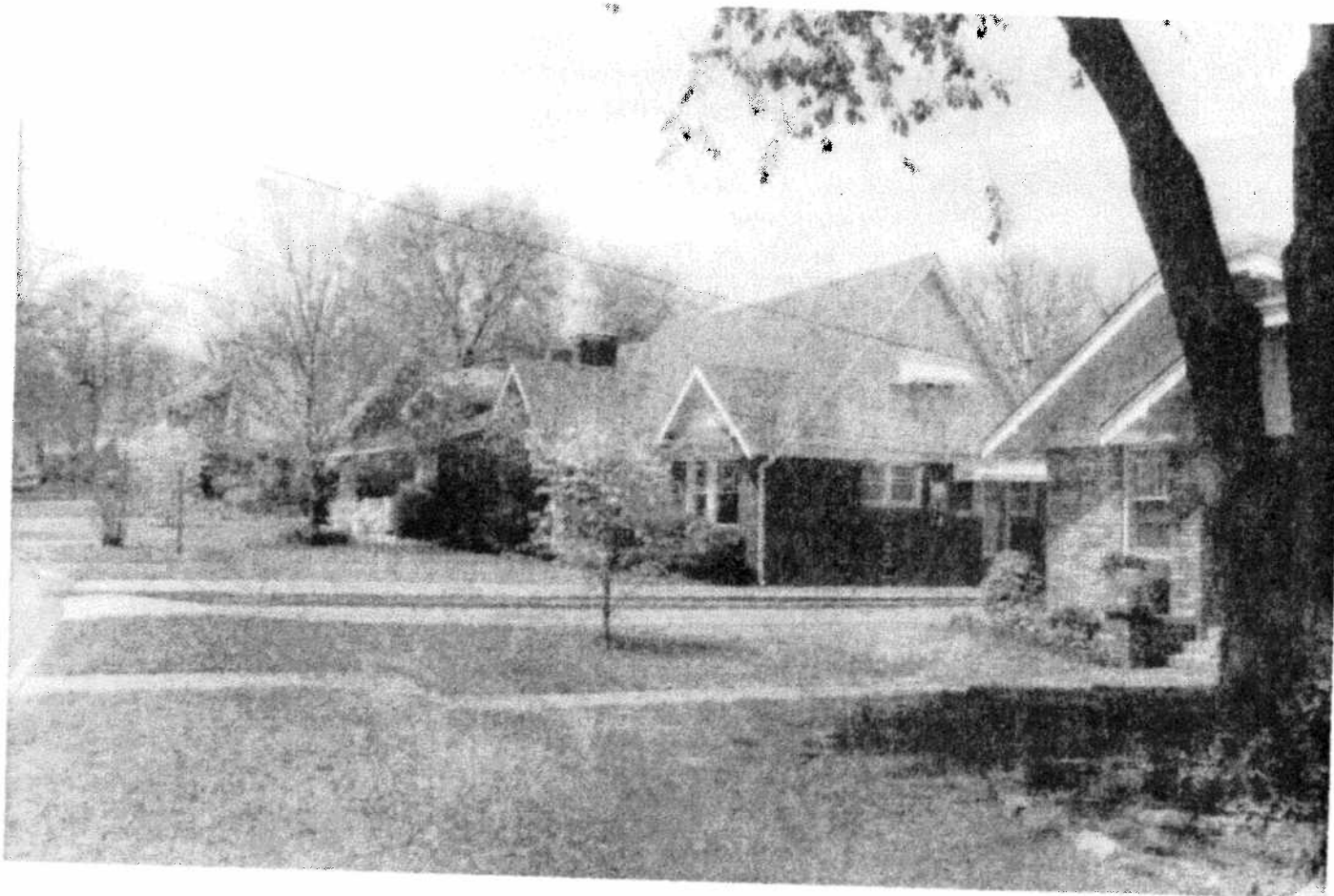
Platted in six sections over a seven-year period beginning in 1920, the F. Q. Story Neighborhood Historic District provides an index of southwestern small house design spanning three decades and vernacular landscape conventions such as the use of paired palms. (Photo by Don W. Ryden, courtesy Arizona Office of Historic Preservation)

Historic period, relationship to transportation corridors, cohesive planning principles, socioeconomic conditions, real estate trends, and architectural character usually impart distinctive characteristics that distinguish the historic neighborhood from the development that surrounds it. Recognition of these factors early in the process makes it possible to place a particular suburb in the national context for suburbanization as well as local or metropolitan contexts. Knowledge of these factors can be used in making comparisons among neighborhoods of similar age, understanding local patterns of history and development, and in defining historic districts that meet the National Register criteria.

Early identification of the type of residential suburb (e.g. railroad suburb,

streetcar suburb) will help the researcher identify areas of significance as well as characteristic features that may be present. Knowledge of the dates when a neighborhood was subdivided and its dwellings constructed will provide a foundation for understanding its physical layout, the design of its housing, its relationship to important stages of local history and development, and its association with important local events.

Although the residential subdivision is a logical unit for study, historic neighborhoods are not necessarily defined by lines drawn on a historic subdivision plat. Historic districts meeting the definition of a historic residential suburb may consist of one or a group of subdivisions, or they may occupy a small portion of a large



Criterion B can apply to neighborhoods that are associated with important developers and best represent their contributions to significant local or metropolitan patterns of suburbanization. The Park Hill Historic District (1921–1950), North Little Rock, Arkansas (top left), is associated with local developer Justin Matthews of the Park Hill Land Company, whose successful entrepreneurial efforts over many years shaped the historic identity of North Little Rock as a suburban community. (Photo by Sandra Taylor Smith, courtesy Arkansas Historic Preservation Program)

A case for exceptional significance under Criterion Consideration G must be made when documenting neighborhoods importantly associated with events that occurred within the past 50 years, even when the homes date to an earlier period. The Glenview Historic District (1920s–1965) in Memphis (top right) possesses exceptional importance as the center of local controversy as African American families exercised their right to purchase homes in existing middle-class neighborhoods during the Civil Rights movement. (Photo by Carroll Van West, courtesy Tennessee Historical Commission)

subdivision. Decisions about significance, integrity, and boundaries, therefore, should take into consideration factors concerning social history and community development of large areas of residential development that broadly meet the definition of “historic residential suburb,” as well as the architecture and site planning of individual subdivisions.

HISTORIC SIGNIFICANCE

Defining historic significance requires a close analysis of information about the development and design of a particular historic neighborhood and an understanding of local, metropolitan, and national trends of suburbanization. The property is viewed in relationship to the broad patterns of suburbanization that shaped a community, State or

the Nation, and to determine whether the area under study meets one or more of the National Register Criteria for Evaluation.

Applying the National Register Criteria and Criteria Considerations

To be eligible for National Register listing, a residential suburb must possess significance in at least one of the four aspects of cultural heritage specified by the National Register Criteria for Evaluation. In addition, neighborhoods less than 50 years of age must meet Criteria Consideration G by possessing exceptional importance.



Association with Important Events and Persons

Historic residential suburbs typically reflect the outward spread of metropolitan areas and the growth and development of communities. For this reason, residential districts are commonly evaluated under **Criterion A** for their association with important events or patterns in community history or with groups of residents (not specific individuals) who collectively made important contributions to the area's prosperity or identity as a place of industry, government, education, or social reform.

Criterion B applies to neighborhoods directly associated with one or more individuals who made important contributions to history. Such individuals must have exerted important influence on the neighborhood's sense of community or historic identity and

they must have gained considerable recognition beyond the neighborhood. This includes prominent residents, such as a leading political figure or social reformer. Criterion B also applies to neighborhoods that are associated with important developers and best represent their contributions to significant local or metropolitan patterns of suburbanization. Subdivisions representing the work of prominent site planners, architects, or landscape architects should be evaluated under Criterion C, unless they also served as their residence during an important period of their career. For more information about applying Criterion B, refer to the National Register bulletin, *Guidelines for Evaluating and Documenting Properties Associated with Significant Persons*.

Distinctive Characteristics of Design

Historic residential suburbs often reflect popular national trends in subdivision design, such as the Picturesque style of the nineteenth century or FHA-recommended curvilinear plans. They may also reflect popular architectural styles, housing types, and principles of landscape architecture. Such districts are evaluated under **Criterion C** to determine if they embody the distinctive characteristics of a type, period, style, or method of construction; or represent the work of a master architect, landscape architect, or community planner. Historic neighborhoods that form "a significant and distinguishable entity whose components," including streets and homes, "lack individual distinction" are also evaluated under Criterion C.

Qualifying physical characteristics, under Criterion C, may be present in

the overall plan, the architectural design of dwellings and other buildings, and the landscape design of the overall subdivision or of individual homes, parks, or parkways. Significance under Criterion C requires that the features that mark distinction in planning, architecture, and landscape design remain intact and recognizable.

Organization of space is a key factor in ascribing significance in community planning and landscape architecture. Visible in the general or master plan and aerial photographs, spatial organization is defined by the relationship between design and natural topography, the arrangement of streets and house lots, the arrangement of buildings and landscape features on each lot, and the provision of common spaces, such as walkways, playgrounds, and parks. The recognition of important local patterns may require examining records held by the local planning or zoning office, the development company, or architectural firms involved with construction, as well as making comparisons with other suburbs in the local area from the same period of time. Significance in landscape architecture may also derive from special features such as a unified program of street lighting or tree plantings; the landscape design of yards, entrance ways, or roadways; the presence of scenic vistas; or conservation of natural features.

Distinctive architectural design may be present in a variety of building types—dwellings, garages, carriage houses, community buildings, gate houses, and sheds. Buildings may reflect a cohesive architectural type and style with some variation (e.g. Cape Cod or Ranch) or they may reflect a variety of period or regional styles such as Tudor Revival, Colonial Revival, or Mediterranean. Homogeneity or diversity of housing types and style may be an important architectural characteristic and be an important indicator of the overall design intent of the suburb as well as its period of development. Information about the developer and the various architects and landscape architects involved in the design of a subdivision is important to understanding the character of a residential subdivision, ascribing design signifi-

cance, and placing a suburb in a local, metropolitan, State, or national context.

Ability to Yield Important Information

Criterion D is applied to the evaluation of pre- or post-contact sites, such as remnant mills and farmsteads that pre-date land subdivision and remain intact in parks, stream valleys, floodplain, or steep hillsides. Such sites may provide information important to historic contexts other than suburbanization. In addition, historical archeology of home grounds may provide important information about the organization of domestic grounds, vernacular house types, gardening practices, or patterns of domestic life. When used in tandem with documentary sources, historical archeology helps define data sets and research questions important in understanding patterns of suburbanization and domestic life. For additional guidance, consult the National Register bulletin, *Guidelines for Evaluating and Registering Archeological Sites and Districts*.

Evaluation under Criterion Consideration G

Criterion Consideration G states that properties that have achieved significance within the past 50 years may qualify for National Register listing if they are an integral part of a historic district that meets the criteria or if they have exceptional importance.

The post-World War II building boom, spurred by the availability of low-cost, long-term mortgages for home owners and financial credits for builders, resulted in the widespread development of suburban subdivisions that were not only large in size but vast in number. In coming years as many of these approach 50 years of age, there will be increasing pressure to evaluate their eligibility for listing in the National Register. Their evaluation raises several questions concerning Criterion Consideration G and the National Register's 50-year guideline.

When must a historic subdivision or neighborhood possess "exceptional importance" as a requirement for

National Register listing? Specific dates for the overall site design and the construction of component resources are needed to determine when a case for exceptional importance is necessary to support eligibility or listing. Such a case must be made for subdivisions which were platted and laid out and where the majority of homes were constructed within the last 50 years. It is also required for neighborhoods importantly associated with events that occurred within the past 50 years even though the homes were built during an earlier period, for example an older neighborhood importantly associated with the Civil Rights movement.

Is "exceptional importance" a requirement for a neighborhood whose construction began more than 50 years ago but was completed within the past 50 years? Because subdivisions were typically constructed over a period of many years, it is not uncommon to encounter a subdivision where streets and utilities were laid out and home construction begun more than 50 years ago, but where construction continued into the recent past. As a general rule, when a neighborhood as a whole was laid out more than 50 years ago and the majority of homes and other resources are greater than 50 years of age, a case for exceptional importance is not needed. In such cases, the period of significance may be extended a reasonable length of time (e.g., five or six years) within the less-than-50-year period to recognize the contribution of resources that, although less-than-50-years of age, are consistent with the neighborhood's historic plan and character.

When the majority of homes and other resources, however, are less than 50 years of age, a case for exceptional importance is required. Subdivisions of this type found not to possess exceptional importance should be reevaluated when the majority of resources achieve 50 years of age.

Regional contexts should be developed in areas where suburbanization was widespread and numerous planned subdivisions took form during the post-war era. Such a context can help 1) establish a chronology of the region's



This 1957 contemporary house represents the final phase of home-building in the Monte Vista and College View Historic District, which is listed under the Twentieth Century Suburban Growth in Albuquerque MPS. The district's period of significance was extended to the late 1950s (six years beyond the 50-year cut-off date at the time of listing) to recognize the contribution of houses whose style, type, and quality of construction was consistent with the suburb's design and historic evolution. In such cases a justification of exceptional significance under Criteria consideration G is not necessary. (Photo by David Kammer, courtesy New Mexico Office of Cultural Affairs)

suburban development, 2) target neighborhoods to be surveyed, and 3) identify exceptional examples that may be nominated before the majority of dwellings reach 50 years of age. To determine exceptional importance within a local, metropolitan, or regional context, it is necessary to consider a neighborhood's history in relationship to the overall local trends of post-World War II suburbanization as well as national patterns. Comparisons with other neighborhoods of the same period make it possible to identify distinctive or representative examples and to determine the extent to which they possess historic integrity.

For further guidance, you may wish to refer to the National Register bulletin, *Guidelines for Evaluating and Nominating Properties That Have Achieved Significance Within the Last Fifty Years*.

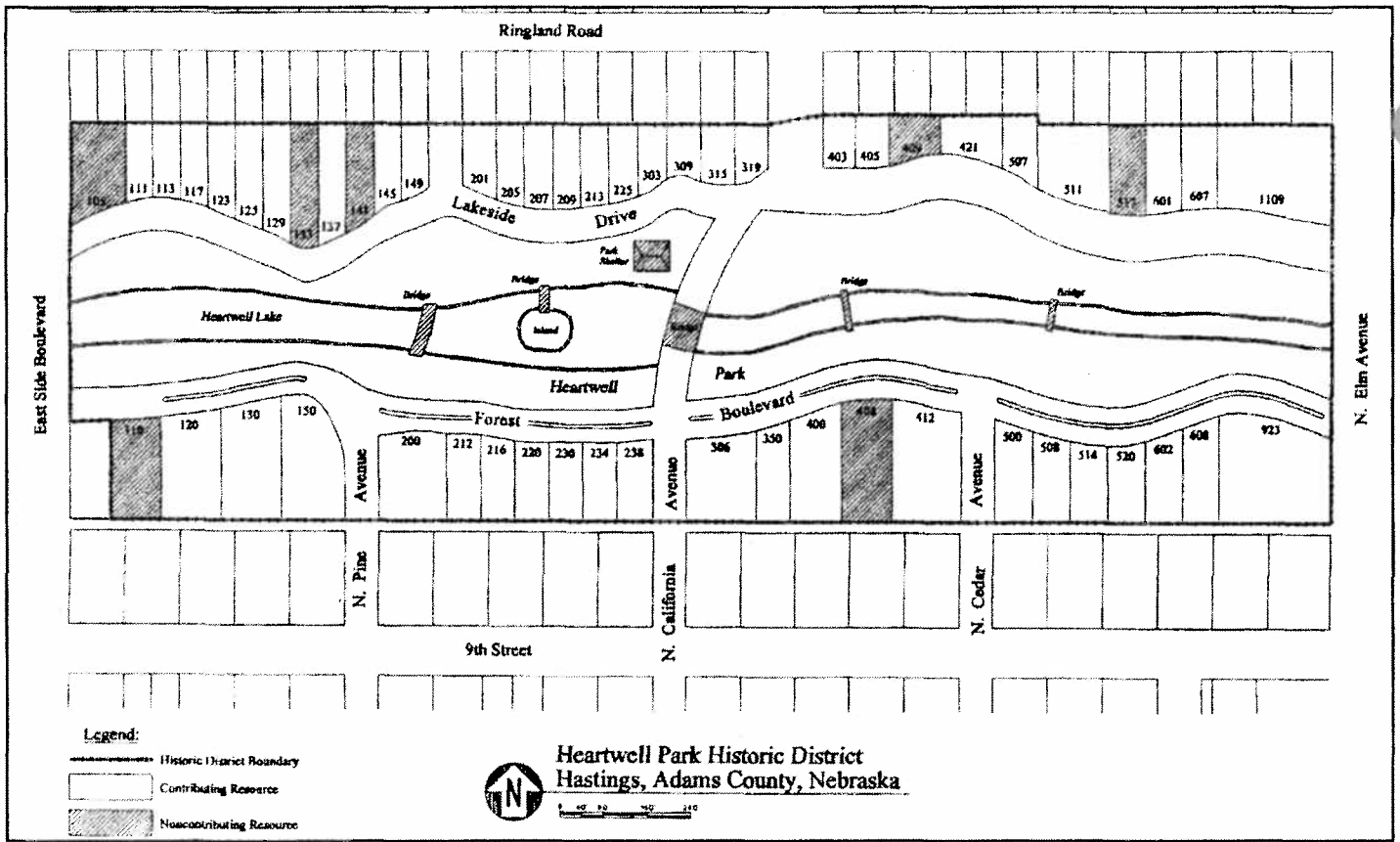
Selecting Areas of Significance

Area of significance is that aspect of history in which a historic property through design, use, physical characteristics, or association influenced the history and identity of a local area, region, State, or the Nation. The following areas of significance are commonly applied to historic neighborhoods important under Criterion A or B for their association with important events and persons.

- **Government** applies to those that reflect early or particularly important responses to government financing, adherence to government standards, or the institution of zoning by local governments.
- **Education, medicine, or government** may be areas of significance when a significant concentration of residents was associated with a

locally important center of government, hospital, or university.

- **Industry** applies when a suburb, by design or circumstance, served the need for housing for workers in a particular industrial activity, such as defense production during World War II.
- **Transportation** recognizes the direct association of a neighborhood or community with important advances in transportation and incorporation of innovative transportation facilities, such as a railroad station or circulation system that separates pedestrian and motor traffic.
- **Social history** recognizes the contributions of a historic neighborhood to the improvement of living conditions through the introduction of an innovative type of housing or neighborhood planning principles, or the



extension of the American dream of suburban life or home ownership to an increasing broad spectrum of Americans.

- **Ethnic Heritage** recognizes the significant association of a historic neighborhood with a particular ethnic or racial group.

The following areas are commonly applied to historic suburbs important for their design under Criterion C:

- **Community planning and development** applies to areas reflecting important patterns of physical development, land division, or land use.
- **Landscape architecture** applies when significant qualities are embodied in the overall design or plan of the suburb and the artistic design of landscape features such as paths, roadways, parks, and vegetation.
- **Architecture** is used when significant qualities are embodied in the design, style, or method of construction of buildings and structures, such as houses, garages, carriage houses, sheds, bridges, gate houses, and community facilities.

Where subdivision design resulted from the collaboration of real estate developers, architects, and landscape architects, significance in all three areas—**community planning and development, architecture, and**

Period of Significance for the Heartwell Park Historic District in Hastings, Nebraska, begins in 1886, when the Heartwell Park Addition was platted by developer James B. Heartwell and the park laid out by landscape architect A. N. Carpenter. It extends to 1950 to encompass the final and largest phase of house construction facing the park in the 1940s, when due to local defense industries, the local population increased from 15,145 in 1940 to 20,211 by 1950 and FHA-insured loans provided incentives for home building. Due to the long period of development, the district includes 47 contributing houses in a wide range of styles and a number of landscape features, including the lake and island, curvilinear drives, and several noncontributing bridges. (Photo and map by Mead & Hunt, Inc., courtesy Nebraska State Historical Society)

landscape architecture—should be recognized and the contributions of designers representing each profession documented. Historic suburbs may be eligible under Criterion C for their reflection of important design characteristics or as the work of a master; those that made important contributions to the theory of landscape design or community planning may also be significant under Criterion A.

Defining Period of Significance

Period of significance is the span of time when a historic property was associated with important events, activities, persons, cultural groups, and land uses, or attained important physical qualities or characteristics. The period of significance defined for a historic district is used to classify contributing and non-contributing resources.

Neighborhoods significant under **Criterion A** often have historic periods spanning many years to correspond with important historic associations and events in community life. The historic period for neighborhoods associated with an important person under **Criterion B** should be based on the years when the person resided in the community or was actively involved in community affairs. The period of significance for neighborhoods qualifying under **Criterion C** generally corresponds to the actual years when the design was executed and construction took place; this will vary depending on the type of suburb and the circumstances under which it took form. For example, suburbs built by merchant builders after World War II are likely to have shorter periods of significance than those laid out earlier in the century by subdividers who were in the business of selling empty lots in improved subdivisions.

Period plans and maps are useful for gaining an understanding of how a neighborhood evolved and for determining the corresponding period of significance. Generally the period of significance for a historic suburb important under **Criterion C** begins with the date when the streets, house lots, and utilities were laid out and extends to the date when the plan was

fully realized or the construction of homes substantially completed. The date of the historic plat may be used as the beginning date only when site improvements were begun shortly afterwards.

National trends of suburbanization as well as local economic factors, including the impact of major worldwide events such as the Great Depression and World War II, influenced the length of time in which historic suburbs formed and the extent to which earlier plans were carried out or modified. Such factors should be considered in defining an appropriate period of significance. Where development was interrupted resulting in lengthy periods when no construction occurred (e.g., a decade or more), it may be appropriate to define several periods of significance.

Where construction occurred over the course of many years, the period of significance may be extended to include more recent construction than 50 years provided it is in keeping with the suburb's historic design and evolution and satisfies the National Register's 50-year guideline (see discussion on page 96). To determine an appropriate closing date for the period of significance, several questions should be answered: What factors (e.g. early plat, deed restrictions, availability of financing) defined the neighborhood's social history and physical character during its early development? How long did these factors continue to influence the character or social history of the district? Are the more recently constructed dwellings of the district, by their location, size, scale, and style, consistent with the suburb's overall historic plan and earlier housing? To what extent do the dwellings, by their architectural style or landscape design, contribute to the historic character of the district? To what extent do they reflect later patterns of suburban development or community history and to what extent are these patterns important? If they occurred within the last 50 years, do they reflect trends or events of exceptional importance?



Historic (c. 1908) and present day views of the Putnam House in University Heights Subdivision Number One, University City, Missouri. A comparison of the two photographs points out many small-scale alterations to the house and a dramatic change in the home's hillside setting due to the growth of trees and shrubs since construction. Because the cumulative effect of the changes is minor, the Putnam House retains its early twentieth-century origins and overall exhibits a high level of historic integrity. (Historic photo courtesy University City Library Archives; present day photo by Charles Scott Payne, courtesy Missouri Department of Natural Resources).

Determining Level of Significance

Properties related to the same historic context are compared to identify those eligible for listing in the National Register and to determine the level—**local, State, or national**—at which the property is significant. Many residential districts will be eligible at the **local level** for their illustration of important aspects of community growth and development and their reflection of the broad trends that shaped suburbanization in the United States.

State level of importance is generally attributed to those that 1) established a precedent or influenced subsequent development within a metropolitan area or larger region within one or several adjoining states; 2) possess outstanding

characteristics of community design, landscape architecture, or architecture within the context of design statewide; or 3) represent the work of one or more master planners, landscape architects, or architects, whose work in subdivision design or suburban housing gained professional recognition in that particular State.

National level of importance is attributed to suburbs whose plan, landscape design, or architectural character introduced important innovations that strongly influenced the design of residential suburbs nationwide; it also applies to examples possessing outstanding artistic distinction or representing pivotal examples of the work of master designers who received national or international acclaim for their contributions to the design of residential suburbs.



HISTORIC INTEGRITY

Assessing historic integrity requires professional judgement about whether a historic subdivision or neighborhood retains the spatial organization, physical components, aspects of design, and historic associations that it acquired during its period of significance. When assessing integrity, consider both the original design laid out in the general plan and the evolution of the plan throughout its history. Keep in mind that changes may have occurred as the plan was implemented and that these changes may also be significant. In instances where the period determined to be "historic" bears little or no relationship to the original design or construction, assessments of historic

integrity should be based on 1) a knowledge of changes that occurred during the period of significance, and 2) a comparison of the neighborhood's current condition with its condition at the end of the significant period.

The period of significance becomes the benchmark for identifying which resources contribute to significant aspects of the neighborhood's history and determining whether subsequent changes contribute to or detract from its historic integrity. Alterations introduced after the period of significance generally detract from integrity. Their impact on the district's overall integrity, however, depends on their scale, number, and conformity with the historic design.

The final decision about integrity is based on the condition of the overall

district and its ability to convey the significance for which it meets the National Register criteria. Weighing overall integrity requires a knowledge of both the physical evolution of the overall district and the condition of its component elements, including the design and materials of houses, the character of streets, and spatial qualities of community parks and facilities. Those making evaluations should take into consideration the extent to which landscape characteristics remain intact or have been altered. They should also be prepared to assess the cumulative effect that multiple changes and alterations may have on a neighborhood's historic integrity.



Developed by African American developers and philanthropists, Walter and Frances Edwards, and approved for FHA-backed loans, the Edwards Historic District (1937-1946), Oklahoma City, illustrates the use of FHA-recommended house designs to create a unified village setting in a neighborhood of small houses. Today most houses reflect several decades of alterations, the most common being the application of nonhistoric siding. Houses having metal, vinyl, or asbestos siding (right) that mimics the original clapboard siding are considered contributing as long as other alterations are minor and the house's defining historic features are present. Those sheathed with thin brick or sheets of concrete-based "stone" veneer (left), however, are considered noncontributing because they have lost their historic character and substantially detract from the overall character of the neighborhood. (Photo by John R. Calhoun, courtesy Oklahoma Historical Society)

Applying Qualities of Integrity

Historic integrity is the composite of seven qualities: location, design, setting, materials, workmanship, feeling, and association. Historic integrity requires that the various features that made up the neighborhood in the historic period be present today in the same configuration and similar condition. These qualities are applied to dwellings, as well as roadways, open spaces, garages, and other aspects of the historic design.

The presence of certain characteristics may be more important than others. Where the general plan of development has importance, integrity should be present in the original boundaries, circulation pattern of streets and walkways, and the division of housing lots. Where architectural design is of greatest significance, integrity will depend heavily on the design, materials, and workmanship of individual houses. Elements such as roadways, the arrangement of house lots, walls, plantings, walkways, park land, ponds, statuary, and fountains may likewise contribute strongly to importance in landscape architecture. Although historic plantings generally

enhance historic integrity, it is important to recognize that as trees, shrubs, and other vegetation mature, they may sometimes erase intended vistas.

The amount of infill and other changes that a historic neighborhood can withstand before losing integrity will depend on its size and scale, the presence of significant features, and the suburban context in which it developed. The division of suburban lots beyond that specified in historic plans and deed restrictions threatens a historic neighborhood's integrity of design and should be viewed as a compatible pattern of development only if the subdivision occurred as a result of historically important events during the period of significance.

Seven Qualities of Integrity

The seven qualities of integrity called for in the National Register criteria can be applied to historic neighborhoods in special ways.

Location is the place where significant activities that shaped the neighborhood took place. This quality requires that to a large extent the boundaries that historically defined the

suburb remain intact and correspond to those of the historic district being nominated. It also requires that the location of streets and the size and shape of the house lots have remained constant.

The location of historic suburbs was often determined by proximity to transportation corridors (streetcar lines, commuter railroads, parkways, or highways) and accessibility to places of employment. While the presence of historic transportation systems may add to a district's historic significance their loss or relocation does not detract in a major way from the integrity of the district.

Design is the composition of elements comprising the form, plan, and spatial organization of a historic neighborhood. This includes the arrangement of streets, division of blocks into house lots, arrangement of yards, and construction of houses and other buildings. Design may have resulted from conscious planning decisions set

forth in the historic plat, project specifications, building contracts or deed restrictions, or it may be the result of the personal tastes and individual efforts of homeowners to shape their domestic environment.

Integrity of design can be affected by changes to the size of housing lots by recent subdivision or consolidation and alterations to individual dwellings in the form of additions, siding, window replacements, and other changes.

Small-scale additions, such as the construction of modest porches or garages, may not detract in a major way from the historic character of individual homes and the neighborhood. Large-scale additions, however, that double the elevation, add substantially to the mass of a historic house, or alter the spatial relationship between house and street generally threaten integrity of design.

Setting is the physical environment within and surrounding a historic suburb. Many historic neighborhoods were

designed to provide a semi-rural environment within commuting distance of the city, joining nature and urban amenities. A semi-rural character was often created through the design of an open, parklike setting of landscaped streets, private yards, and sometimes public parks. Subdivisions were often

American foursquare homes built in 1910 by a subdivider hoping to stimulate sales on the Woodland Place Plat in Des Moines. When evaluating the extent to which alterations affect the historic integrity of an individual house within a district, it is important to consider the nature of the change, its size and scale, and its impact on the character and continuity of the streetscape of which it is a part. Although the porch on the house at the right has been enclosed, the house retains the distinguishing characteristics of its type, style, and method of construction; its distinctive gables, massing, and upper-story fenestration continue to echo the overall form, materials, and setback of neighboring homes. (Photo by James E. Jacobsen, courtesy State Historical Society of Iowa)





surrounded by buffers of trees or bordered by undeveloped stream valleys to reinforce the separation of city and suburb.

Integrity of setting requires that a strong sense of historical setting be maintained within the boundaries of the nominated property. This relies to a large extent on the retention of built resources, street plantings, parks and open space. Elements of design greatly affect integrity of setting, and those consistent with the neighborhood's historic character or dating from the period of significance add to integrity. Small-scale elements such as individual

plantings, gateposts, fences, swimming pools, playground equipment, and parking lots detract from the integrity of setting unless they date to the period of significance.

The setting outside many historic neighborhoods will have changed substantially since the period of significance. Evidence of early streetcar or railroad systems in large part has disappeared, and arterial corridors have been widened and adapted to serve modern automobile traffic. Historic train stations, stores, churches, schools and community buildings, however, may still be present, and may be

nominated separately, or, if located within or on adjoining parcels, may be included within the boundaries of a historic residential suburb.

Materials include the construction materials of dwellings, garages, roadways, walkways, fences, curbing, and other structures, as well as vegetation planted as lawns, shrubs, trees, and gardens. The presence of particular building materials (e.g., stone, stucco, brick, or horizontal siding) may be important indicators of architectural style and methods of construction that give some neighborhoods a cohesive historic character.



Four-unit block of row houses (far left) and a double house built in the 1880s in the Barnum-Palliser District, Bridgeport, Connecticut, an important collection of mid-to-late nineteenth-century homes, many attributed to architects George and Charles Palliser. The houses depicted contribute to the district's significance because, despite asbestos siding placed on the houses during the mid-twentieth-century period, they still exhibit the distinctive architectural features—including bays, vergeboards, porches, dormers, capped chimneys, and gables—that characterized their original designs in the Eastlake and Stick styles. In fact, some of the siding is actually in keeping with the variety and fanciful treatment of the original siding. (Photos by Charles Brilvitch, courtesy Connecticut Historical Commission)

Integrity of materials in an architecturally significant neighborhood requires that the majority of dwellings retains the key exterior materials that marked their identity during the historic period. The retention of original materials in individual dwellings may be less important in assessing the integrity of a neighborhood significant for its plan or landscape design. Original plant materials may enhance the integrity, but their loss does not necessarily destroy it. Vegetation similar in historic species, scale, type and visual effect will generally convey

integrity of setting although integrity of materials may be lost.

Workmanship is evident in the ways materials have been fashioned for functional and decorative purposes to create houses, other buildings and structures, and a landscaped setting. This includes the treatment of materials in house design, the planting and maintenance of vegetation, as well as the construction methods of small-scale features such as curbs and walls.

Integrity of workmanship requires that architectural features in the landscape, such as portals, pavement, curbs, and walls, exhibit the artistry or

craftsmanship of their builders and that the vegetation historically planted for decorative and aesthetic purposes be maintained in an appropriate fashion and replaced in kind when damaged or destroyed.

Feeling, although intangible, is evoked by the presence of physical characteristics that convey the sense of past time and place. Integrity of feeling results from the cumulative effect of setting, design, materials, and workmanship. A streetcar suburb retaining its original street pattern, lot sizes, and variety of housing types and materials will reflect patterns of suburban life reminiscent of the late nineteenth and early twentieth centuries.

Association is the direct link between a historic suburb and the important events that shaped it. Continued residential use and community traditions, as well as the renewal of design covenants and deed restrictions, help maintain a neighborhood's integrity of association. Additions and alterations that introduce new land uses and erase the historic principles of design threaten integrity.

Integrity of association requires that a historic neighborhood convey the period when it achieved importance and that, despite changing patterns of ownership, it continues to reflect the design principles and historic associations that shaped it during the historic period.

Classifying Contributing and Noncontributing Resources

Buildings, structures, objects, and sites within a historic residential suburb are classified as “contributing” if they were present during the period of significance and possess historic integrity for that period. Those resources built or substantially altered after the period of significance are classified as “noncontributing” unless they have individual significance that qualifies them for National Register listing.

When a district’s period of significance extends to a date within the past 50 years (see discussion of Criterion Consideration G on page 96), resources less-than-50-years of age are classified as contributing if they were constructed or achieved significance within the defined period of significance, and by function, historic associations, and design, reflect important aspects of the neighborhood’s history and physical evolution. For example, a Colonial Revival home built in 1954 would contribute to a historic residential suburb whose period of significance extends from 1926, the date of platting, to 1958 when the last house following the original plan was constructed, providing the house was built on one of the original lots and was in keeping with the historic design character set by early deed restrictions. Conversely in the same neighborhood, a 1960s Ranch house on an original lot and a 1990s house imitating the Colonial Revival style on a newly subdivided lot would both be classified as noncontributing because their location and design departed from the neighborhood’s historic plan and their construction occurred outside the period of historic significance.

Nonhistoric Alterations and Additions

Alterations and additions since the period of significance affect whether an individual dwelling contributes to a district’s significance. Designed to be small but expandable, the houses built from the early 1930s through the 1950s have typically been enlarged as home owners have added garages, porches, sun rooms, family rooms, and additional bedrooms. Houses with relatively

modest additions that have little effect on the historic design of the original dwelling are classified as contributing. Those with additions that alter the original building’s massing and scale, introduce major noncompatible design elements, and interrupt the spatial organization of the streetscape and neighborhood, however, are classified as noncontributing.

When evaluating the extent to which the addition changes the dwelling’s individual character and the character of the streetscape of which it is a part, it is important to consider the size, scale, and design of the addition as well as its placement on the house lot. Information such as original setback requirements, historic design guidelines, and deed restrictions may also be useful in assessing the effect of additions on historic integrity. Whereas the construction of dormers on a Cape Cod house is unlikely to affect the dwelling’s integrity in a serious way, the addition of a full, second story by “popping up” the roof substantially alters the character of both house and streetscape.

Replacement siding poses a serious threat to the historic character of residential neighborhoods. Not only have wooden clapboards and shingled surfaces given way to a wide array of commercially available siding in aluminum and vinyl, but the asbestos-based materials of many World War II era and postwar subdivisions, now considered unsightly and unhealthy, are being covered. Whether new siding is the result of maintenance, health, aesthetic or energy saving concerns, it can have a substantial, cumulative impact on the character of historic neighborhoods, especially those with architectural distinction.

However, classifying all homes with nonhistoric siding as noncontributing is often too strict a measure. A wise approach is to consider the effect siding has on the character of the individual dwelling, and the character of the neighborhood as a whole. When determining whether a house with nonhistoric siding contributes, consider the following:

- The extent to which the new material visually approximates the house’s original material, design, and workmanship. Siding made of horizontal aluminum or vinyl boards would have less effect on the visual integrity of a house originally sheathed in clapboards or novelty siding than one built of brick or stone.
- The degree to which other distinctive features or architectural styling are obscured or lost by the application of the siding. The negative effect of siding is minimized if features such as window surrounds, purlins, wood detailing, barge boards, and brackets remain undamaged and visible.
- The extent to which new siding is accompanied by other alterations or additions that substantially or cumulatively affect the building’s historic character.

In general, houses may be classified as contributing resources where new siding: 1) visually imitates the historic material; 2) has been thoughtfully applied without destroying and obscuring significant details; and 3) is not accompanied by other alterations that substantially or cumulatively affect the building’s historic character.

Replacement siding is not a new phenomenon, and when evaluating the integrity of a historic neighborhood, one must consider the date when materials such as form stone, imitative brick sheathing, asbestos shingles, and other materials were added. Where these materials were installed during the period of significance, either by original home owners or later ones, they may reflect important aspects of the neighborhood’s evolution.

In sum, determining a reasonable threshold for evaluating the integrity of component resources begins with considering the reasons why the district meets the National Register criteria, and extends to examining the resource not only for its individual characteristics, but also for its contribution to the historic character of the overall neighborhood.

Weighing Overall Integrity

The final decision about integrity is based on the condition of the overall district and its ability to convey significance. The integrity of historic characteristics such as the overall spatial design, circulation network, and vegetation as well as the integrity of individual homes should be considered. Integrity depends to a substantial degree on the context of a metropolitan area's pattern of suburbanization and the condition of comparable neighborhoods in the area. The loss or relocation of a few features usually does not result in the loss of integrity of an entire historic neighborhood; however, the loss of entire streets or sections of the plan, cumulative alterations and additions to large numbers of dwellings, the subdivision of lots, and infill construction all threaten the integrity of the historic plan and the neighborhood's overall historic character.

The integrity of a historic residential subdivision relies in part on the cohesion of the historic plan and aspects of spatial organization, including street design, setbacks, and density. For this reason, integrity cannot be measured simply by the number of contributing and noncontributing resources. The retention of historic qualities of spatial organization, such as massing, scale, and setbacks, and the presence of historic plantings, circulation patterns, boundary demarcations, and other landscape features, should also be considered in evaluating the overall integrity of a historic neighborhood. Historic and contemporary views may be compared through old photographs, correspondence, news clippings, and promotional brochures to determine the extent to which the general design, character, and feeling of the historic neighborhood are intact and to measure the impact of alterations.

BOUNDARIES

The selection of boundaries for historic residential suburbs generally follows the guidelines for historic districts found in National Register bulletins, *How to Complete National Register of*

Historic Places Forms and Defining Boundaries for National Register Properties. Dwellings by noted architects, distinctive examples of a type or method of house construction, or designed landscapes, such as a park or parkway, may be nominated separately if they possess significance for which they individually meet the National Register criteria.

Defining the Historic Property

Boundaries are typically defined by the extent of a historic subdivision or group of contiguous subdivisions, particularly where significance is based on design. Factors such as identity as a neighborhood community based on historic events, traditions, and other associations may be more relevant and should be considered when defining the boundaries of neighborhoods important in social history or ethnic heritage.

Deciding What To Include

Boundaries should be clearly drawn on the basis of physical characteristics, historic ownership, and community identity as a neighborhood. In cases where a plan was only partially completed, the district boundaries should correspond to only the area where the plan was realized. Areas annexed or added to a historic plan may be included in the boundaries if such additions are shown to be historically important aspects of the overall suburb's evolution and therefore possess historical significance. If sections of a historic neighborhood have lost historic integrity, it is necessary to determine whether the sections lacking historic integrity can be excluded from the boundaries and whether the remaining unaltered area is substantial enough to convey significance.

For residential suburbs that developed in several stages, perhaps as a single farm was sold and subdivided in segments, boundaries are generally drawn to encompass the largest area that took form during the historic period and that possesses historic importance. The nomination should

document the sequential stages of development, indicating the boundaries of each stage on a sketch map or period plan. Areas added within the past 50 years should be excluded from the district's boundaries unless they are shown to have exceptional importance. Peripheral areas lacking integrity should also be excluded from the boundaries, for example, in the case of a recently zoned commercial corridor on the edge of a historic subdivision where the relationship of individual dwellings to the original plan and to the historic neighborhood have been lost. However, "donut holes" are not acceptable.

Natural areas such as ponds or woodlands may be included in the boundaries when they have recreational or conservation value and were included in the historic plan. Preexisting resources such as farmsteads may be included in the boundaries when they are integral to the design of the subdivision, were clearly designated for preservation in the subdivision plan, or have individual importance that is documented in the nomination.

Selecting Appropriate Edges

Lines drawn on historic plats, legal boundaries, rights-of-way, and changes in the nature of development or spatial organization are generally used to define the edges of a historic neighborhood. In general, the boundaries should be drawn along historic lot lines or boundary streets. An explanation of the relationship between the historic plan or subdivision and the proposed National Register boundaries should be given in the boundary justification.

DOCUMENTATION AND REGISTRATION

MULTIPLE PROPERTY SUBMISSIONS

Where the history of suburbanization for a metropolitan area is studied for the purpose of identifying a number of historic suburban neighborhoods, the National Register Multiple Property Documentation Form (NPS-10-900b) may be used to document the context, property types, registration requirements, and study methodology. Individual registration forms are then used to document each eligible neighborhood. Instructions for completing the form are found in the National Register bulletin, *How to Complete the National Register Multiple Property Documentation Form*, and videotape, *The Multiple Property Approach*.

INDIVIDUAL NOMINATIONS AND DETERMINATIONS OF ELIGIBILITY

Nominations are made on the National Register Registration Form (NPS-10-900) and processed according to the regulations set forth in 36 CFR Part 60. The form is intended as a summary of the information gathered during identification and a synthesis of findings concerning significance, integrity, and boundaries. General instructions for completing the form are found in the National Register bulletin, *Guidelines for Completing the National Register of Historic Places Registration Form*. Guidelines for documenting nationally significant properties for NHL designation by the Secretary of the Interior are found in the National Register bulletin, *How to Prepare National Historic Landmark Nominations*. The following section provides supplementary instructions for each part of the form.

Name

Historic residential suburbs are historic districts and may be named in various ways relating to their history and significance: historic name given in the original plat or plan, name used by the community during the period of significance, or name based on geographical location such as a town, village, or street. The name can include the term "historic district" or "historic residential suburb."

Classification

A historic subdivision is generally classified as a historic district because it is a collection of buildings, structures, and other features. The land covered by the overall plan is generally counted as a single site, and all buildings and structures substantial in size or scale therein are counted separately as contributing or noncontributing resources. The count should include bridges, free-standing garages, and outbuildings of sufficient size and scale to warrant being counted separately. Landscape features such as curbing, roadways, paths, tree plantings, ponds, and storm drains are generally considered integral features of the overall site and are not counted separately, unless they are substantial in size and scale or have special importance such as a central landscaped avenue or a designed park.

Description

The narrative description documents the physical evolution and current condition of the historic neighborhood being registered. The chart on pages 86-87 can be used as a checklist for describing residential districts. In summary, the description documents:

1) The historical relationship of the suburb or neighborhood to the growth and development of the local community or metropolitan area,

including the location of major transportation corridors; the provision for public utilities, such as power and water mains; the location of civic centers, business districts, schools, and parks and parkways; and local planning measures, such as subdivision regulations and zoning ordinances.

- 2) Neighborhood's relationship to the area's natural topography and physiography, including natural features comprising and surrounding the district, such as streams, canyons, rivers, escarpments, mountains, floodplain, and geological features.
- 3) The subdivision plan and its component features, including the circulation system, entrance features, arrangement of blocks and house lots, provision of sidewalks and pedestrian paths, landscape plantings, and community facilities such as parks, playgrounds, and recreational centers. Developer's role and relationship to architects, landscape architects, and home builders involved in the neighborhood's design and development. Principles of landscape design characterized by the overall plan or by specialized areas within the plan. Improvements provided by the developer, including water and septic systems, roads, and parks. Terms of deed restrictions that provided a form of "private control" over aspects such as the cost of construction, required setbacks, architectural style, and future alterations. The presence of street plantings, lampposts, curbs and gutters, entrance portals or signs, memorials, sculpture, landscape elements, principal vegetation, and important natural features.
- 4) Principal house types, architectural styles, and methods of construction, including predominant characteristics, such as scale, proportions, materials, color, decoration, workmanship, and quality of design.

Significant groupings of dwellings, as well as distinctive individual examples. Architectural types, styles, and methods of construction evident in houses, garages, sheds, and community buildings. Housing may be classified by type based on housing models, architectural style or period, or other descriptive means. Principal architects and home builders, and representative examples of their work should be identified.

- 5) Design and function of schools, churches, commercial centers, and transportation facilities within the boundaries of the historic neighborhood.

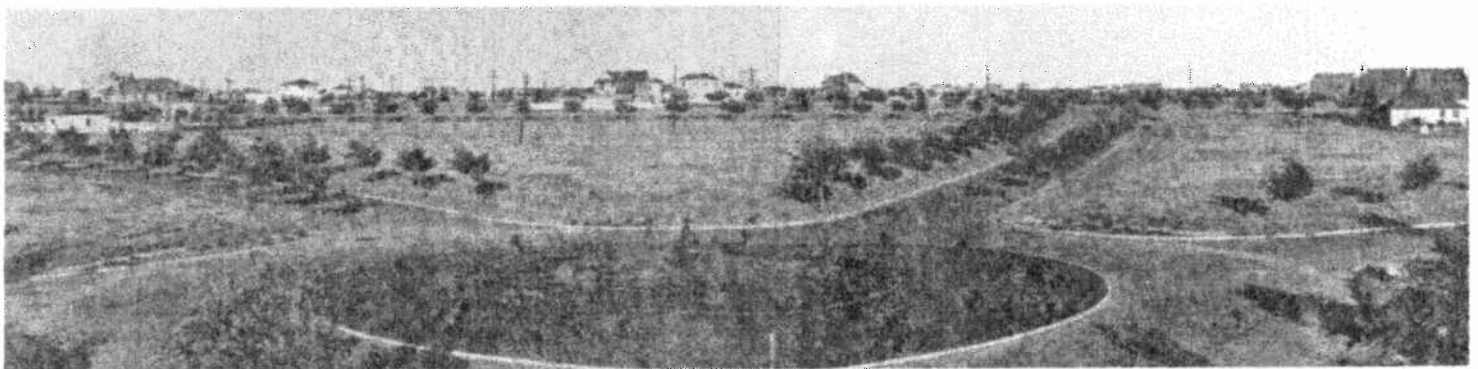
- 6) Principles of landscape design and historic landscape features evident in yard design, such as open lawns, border gardens, specimen trees, fences and walls, hedges, shrubbery, and foundation plantings. Identity of landscape architects involved in the design and development of the neighborhood, noting any landscape features that represent their work.
- 7) Appearance of the district during the period when it achieved historical significance and any subsequent changes or modifications. This includes alterations and additions to the plan or to the dwellings and other buildings, noting the types of changes and the degree to which alterations affect the integrity of

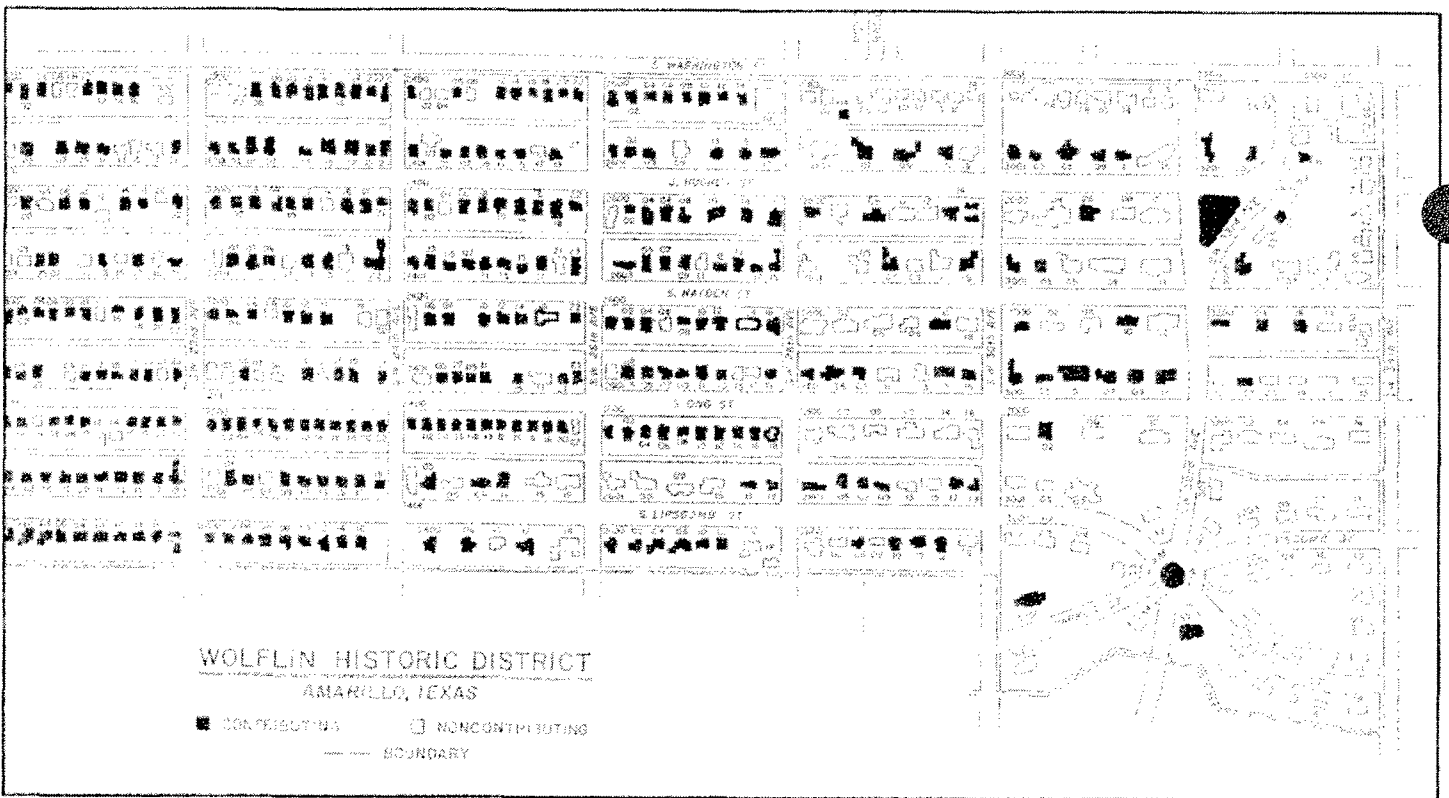
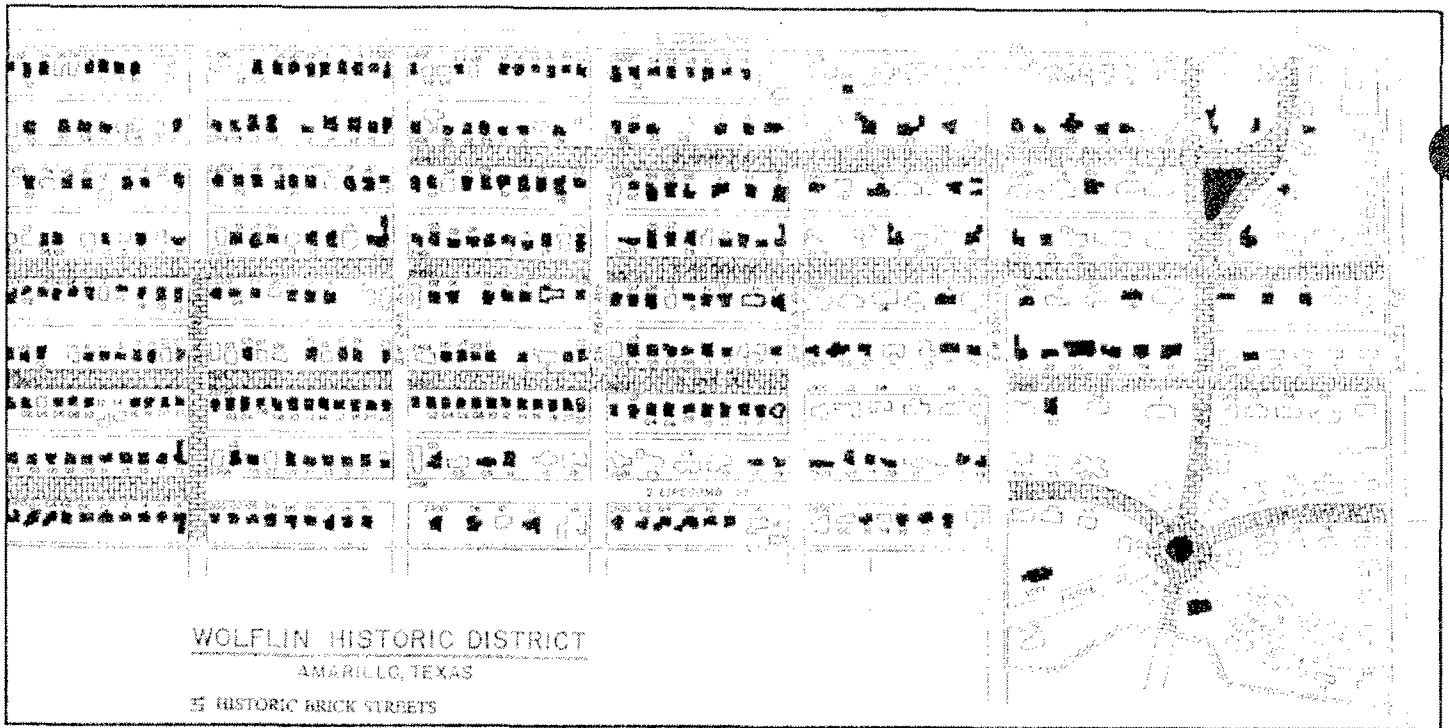
individual resources. Identify threats to the integrity of the overall plan, such as infill, consolidation and redevelopment of lots, the clearing of previously built-upon lots (commonly called "scraping"), widening of interior roads, widening of circumferential roads, loss of street trees, construction of fences, and traffic calming measures (e.g. traffic circles). Patterns of alterations that markedly alter the historic appearance of the housing (e.g. siding; window replacements; the raising of roofs to add stories, commonly called "pop ups"; and porch enclosures). Any restoration or rehabilitation activities.

- 8) Factors considered in classifying contributing and noncontributing resources. Because historic neighborhoods typically embody the tastes, economic conditions, and lifestyles of several generations of American home owners, preservationists need to carefully consider the nature of the alterations, the period in which they occurred, and the effect they have on the ability of the neighborhood to reflect important historic associations or aspects of design.



The photographic documentation for the Wolflin Historic District in Amarillo, Texas, depicted representative house types such as the Tudor Revival Johnson-Batten-Marsh House of 1927 and panoramic views of the Wolflin Estates subdivision taken in 1931 after the developer laid out the streets and planted regularly spaced rows of Siberian elms according to the 1927 plan by Hare & Hare. (House photo by Bridget Metzger, courtesy Texas Historical Commission; historic photo courtesy Preservation Amarillo)





The Wolflin Historic District consists of Wolflin Place (to the west) platted in 1923 and expanded in 1926 to follow the city's gridiron plan, and Wolflin Estates (to the east), platted with a radial plan by landscape architects Hare & Hare in 1927. Separate sketch maps were prepared to indicate the location of the community's distinctive brick streets and contributing and noncontributing buildings. Because the landscape design of Wolflin Estates dates to the historic period and is significant as a local example of the work of a master designer, it is included within the district's boundaries even though many of its buildings were built outside the period of significance. (Maps by Hardy-Heck-Moore, courtesy Texas Historical Commission)

9) A list of contributing and noncontributing resources keyed to a sketch map for the entire district. This list should provide the address, date of construction, and condition for all principal buildings, as well as streets

avenues, parks, playgrounds, and recreational areas that are part of the historic neighborhood. Because many residential districts will have a large number of component resources, which often share common aspects of size, plan, and style, it may be useful to develop a typology of housing types that can be used in listing contributing and noncontributing resources and locating examples on sketch maps. Many computer programs are particularly helpful in formulating such a list.

Statement of Significance

The statement of significance explains the ways in which the historic district relates to the theme of suburbanization locally and reflects the national trends presented in this bulletin and sets forth the reasons the district is significant within this context. The statement addresses the National Register criteria, and if applicable, criteria considerations. The greater the importance of certain features—such as the overall plan and circulation network—the more detailed the explanation of their role should be. The reasons for selecting the period of significance and the areas of significance in which the district meets the National Register criteria must be justified.

Unless provided on a related multiple property form, a statement of historic context should identify one or more themes to which the property relates through its historic uses, activities, associations, and physical characteristics. The discussion of historic context should:

- 1) Explain the role of the property in relationship to broad historic trends, drawing on specific facts about the district and its community.
- 2) Briefly describe the history of the community where the neighborhood is located and explain the various stages in the community's suburbanization, the factors leading to the development of suburban neighborhoods, and the characteristics of historic subdivisions locally or regionally. Explain how local trends

and examples relate to the national context for suburbanization.

- 3) Explain or discuss the importance of the suburban neighborhood in each area of significance by showing that it is a unique, important or outstanding representative when compared to other neighborhoods of the same period or type or with similar historical associations.
- 4) Explain how housing types, architectural style, landscape design, materials and methods of construction reflect important trends in the design and technology of the American house and yard. Note sources of plans (e.g., factory-made houses, pattern books, mail order plans, Small House Architect's Bureau, FHA-recommended designs, or professional firm).
- 5) Establish the importance of the developer, principal home builders, architects, and landscape architects in the history of the local community or metropolitan region.

For districts significant under Criterion A, provide an explanation of how the events, or pattern of events, represented by the district made an important contribution to the history of the community, State, or Nation. For districts significant under Criterion B, explain how the person with whom the property is associated is important in the history of the community, State, or Nation. For districts significant under Criterion C, the statement of context may be developed in one or more of the following ways: 1) as a type, period, style, or method of construction; 2) as the work of a master; 3) possessing high artistic values; and 4) representing a significant and distinguishable entity whose components may lack individual distinction.

The documentation of neighborhoods that achieved significance within the past 50 years requires a justification of exceptional importance. An explanation of the dates when the subdivision was laid out and the housing constructed should be given in the nomination to support the period of significance and to indicate whether or not a justification of exceptional significance is

needed. As a general rule, a majority of resources must be at least 50 years of age, before the district as a whole can be considered to meet the 50-year guideline. The nomination of a suburban neighborhood whose design was begun and substantially completed more than 50 years ago, although some resources within the district were built within the last 50 years, does not require a justification of exceptional importance.

Maps and Photographs

The general requirements for maps and photographs are given in the National Register bulletin, *How to Complete the National Register Registration Form*. Maps include a U.S.G.S. quadrant map identifying the location and coordinates of the historic district and a detailed sketch map indicating boundaries and labeling resources as contributing or noncontributing. In addition, the sketch map should identify the names of streets and community facilities, such as schools, community buildings, shopping centers, parks, and playgrounds. The map should include street addresses or be cross-referenced by resource number or name to the list of contributing or noncontributing resources in the Description (Section 7). The number and vantage point of each photographic view should be indicated as well as the relationship of the district to surrounding streets or nearby transportation facilities.

Photographs should illustrate the character of principal streetscapes, representative dwelling types, and significant aspects of landscape design. Community facilities, such as schools and parks, and representative examples of noncontributing resources should be depicted.

If possible, supplement the required documentation with copies of historic plats, plans, and photographs. Period plans that show the extent to which housing and landscape design were completed at various intervals of time are also useful for graphically depicting the neighborhood's physical evolution and can supplement the narratives in Sections 7 and 8.

ENDNOTES

Please note: Many of the following references include sources for further reading.

1. David R. Goldfield and Blaine A. Brownell, *Urban America: A History*, 2d. ed. (Boston: Houghton Mifflin, 1990), 289; Leo F. Schnore, "Metropolitan Growth and Decentralization," in *The Urban Scene: Human Ecology and Demography*, Leo F. Schnore, ed., (New York, 1965), 80, cited in Marc S. Foster, *From Streetcar to Superhighway* (Philadelphia: Temple University Press, 1981), 47; Dennis R. Judd and Todd Swanstrom, *City Politics* (New York: Harper Collins, 1994), 187.
2. This bulletin provides an overview of a national context for suburban development in the United States and a methodology for developing contexts at the local, metropolitan, or State level. The complete national context can be found in the "Historic Residential Suburbs in the United States, 1830 to 1960, Multiple Property Documentation Form." It is available electronically on the National Register Web site at <www.nps.gov/nr/pubs>. Printed copies may be requested through e:mail (nr_info@nps.gov) or by writing to National Register of Historic Places, National Park Service, 1849 C. Street, NW, Washington D.C. 20240.
3. See the Public Housing in the United States, 1933-1949, MPS (draft) available from the National Register program.
4. Robert Fishman, *Bourgeois Utopias* (New York: Basic Books, 1987), 155.
5. John R. Stilgoe, *Borderland* (New Haven and London: Yale University Press, 1985); Fishman, *Bourgeois Utopias*.
6. Kenneth T. Jackson, *Crabgrass Frontier* (New York: Oxford University Press, 1985)35-37; 37; David Schuyler, *The New Urban Landscape* (Baltimore: Johns Hopkins University Press), 152; James E. Vance, *Geography and the Urban Evolution in the San Francisco Bay* (Berkeley: Institute of Governmental Studies, University of California, 1964), 43.
7. Anne D. Keating, *Building Chicago* (Columbus: Ohio State University Press, 1988), 14; Jackson, 92-93; Stilgoe, 140; Goldfield and Brownell, 259.
8. Clay McShane and Joel A. Tarr, "The Centrality of the Horse in the Nineteenth Century City," in *The Making of Urban America*, 2nd ed., ed. Raymond A. Mohl (Wilmington, Del.: SR Books, 1997), 111; Jackson, 39-42.
9. McShane and Tarr, 111; Fishman, 138.
10. Paul L. Knox, *Urbanization* (Englewood Cliffs, N.J.: Prentice Hall, 1994), 89; Joel A. Tarr and Josef W. Konvitz, "Patterns in the Development of Urban Infrastructure," in *American Urbanism*, ed. Howard Gillette Jr. and Zane L. Miller (Westport, Conn: Greenwood Press, 1987), 204.
11. Jackson, 118-120. See also Samuel Bass Warner Jr., *Streetcar Suburbs* (Cambridge: Harvard University Press, 1962); Paul H. Mattingly, *Suburban Landscapes* (Baltimore: Johns Hopkins University Press, 2001).
12. Jackson, 119.
13. Foster, 16.
14. See Stilgoe, 239-51; Eric Johannesen, et.al. Shaker Square and Shaker Village H.D. NRHP Nominations, Ohio SHPO, July 1, 1976, and May 31, 1984, and Boundary Increases, December 9, 1983, and January 5, 2001.
15. Foster, 49, 52.
16. Tarr and Konvitz, 210; Mel Scott, *American City Planning Since 1890* (Berkeley: University of California Press, 1971), 186; Federal Highway Administration, *Highway Statistics: Summary to 1985*, as quoted in Knox, 107.
17. Peter G. Rowe, *Making a Middle Landscape* (Cambridge: MIT Press, 1991), 4; Jackson, 181.
18. Tarr and Konvitz, 211.
19. Edward Relph, *Modern Urban Landscape* (Baltimore: Johns Hopkins University Press, 1993), 77; Rowe, *Making a Middle Landscape*, 186-91; Christopher Tunnard and Boris Pushkarev, *Man-Made America* (New Haven: Yale University Press, 1966), 160-62.
20. Tarr and Konvitz, 210.
21. Larry R. Ford, *Cities and Buildings* (Baltimore: Johns Hopkins University Press, 1994), 233.
22. Bruce E. Seely, *Building the American Highway System* (Philadelphia: Temple University Press, 1987), 67; Tunnard and Pushkarev, 162-67.
23. Tunnard and Pushkarev, 162-65.
24. Rowe, 193; Tom Lewis, *Divided Highways* (New York: Viking Penguin, 1997; reprinted New York: Penguin Books, 1999), 41-44.
25. Lewis, 54-55.
26. Mark H. Rose, *Interstate*, rev. ed. (Knoxville: University of Tennessee Press, 1990), 19, 26.
27. Rose, 26; Rowe, 194.
28. Rose, 92; Rowe, 195.
29. Warner, 122; Chase, Susan Mulchahey, David L. Ames, and Rebecca Siders, *Suburbanization in the Vicinity of Wilmington, Delaware* (Newark, Del.: Center for Historic Architecture and Engineering, 1993), 90; Susan Mulchahey Chase, "The Process of Suburbanization and the Use of Restrictive Deed Covenants as Private Zoning" (unpublished Ph.d dissertation, University of Delaware, 1995), 119; Marc A. Weiss, *The Rise of the Community Builder* (New York: Columbia University Press, 1987), 40-42.
30. Weiss, 41-42; Keating, 70. See also William C. Page, et.al., *Towards a Greater Des Moines: Development and Early Suburbanization, ca 1880-ca 1920*, NRHP MPS, Iowa SHPO, October 25, 1996; James E. Jacobsen, *The Bungalow and Square House: Des Moines Residential Growth and Development* NRHP MPS, Iowa SHPO, November 21, 2000.
31. Greg Hise, *Magnetic Los Angeles* (Baltimore: Johns Hopkins University Press, 1997), 25; Weiss, 45.
32. Jackson, 177-78; Stilgoe, 258-59; Weiss, 4, 45-46, 50, 57. See also William S. Worley, J.C. *Nichols and the Shaping of Kansas City* (Columbia: University of Missouri Press, 1990); Catharine F. Black, *Roland Park NRHP Nomination*, Maryland SHPO, December 23, 1974.
33. See Weiss, 53-60.
34. *Ibid.*, 3-4.
35. Hise, 143.
36. Hise, 201-02; Jackson, 231-45. See also Barbara Kelly, *Expanding the American Dream* (Albany: State University of New York Press, 1993); Gregory C. Randall, *America's Original GI Town* (Baltimore: Johns Hopkins University Press, 2000); Jerry Ditto, Marvin Wax, and Lanning Stern, *Design for Living* (San Francisco: Chronicle Books, 1995); Ned Eichler, *The Merchant Builders* (Cambridge: MIT Press, 1982).
37. Jackson, 196; Keating, 70-71; Weiss, 32-33; Frank A. Chase, "Building and Loan Advantages: The Why and the Wherefore," *New York Tribune*, September 2, 1923.
38. Scott, 284.
39. *Ibid.*; FHA, *The FHA Story in Summary, 1934-1959* (Washington, D.C.: Government Printing Office, 1959), 2.
40. Jackson, 195-97.
41. FHA, *FHA Story*, 5, 13-17; Jackson, 203-09.
42. "Defense Housing in Brief Retrospect: The Aims and Achievements of Certain Housing Agencies—A Symposium," *Landscape Architecture* 33, no. 1 (October 1942): 14-19; FHA, *FHA Story*, 14-15. This bulletin is primarily concerned with legislative incentives that stimulated and influenced private investment in suburban real estate and home construction. The 1937 United States Housing Act (50 Stat. 888) established a federal program of urban public housing and slum clearance under the United States Public Housing Authority, and the 1940 Lanham Act (54 Stat. 1125) established the Federal Works Agency and expanded federal public housing programs to include housing for defense workers. In 1942, the FHA and the public housing programs were consolidated in one agency.
43. See William H. Wilson, *The City Beautiful Movement* (Baltimore: Johns Hopkins University Press, 1994).
44. Quotation is from Weiss, 49.

45. Norman T. Newton, *Design on the Land* (Cambridge: The Belknap Press of Harvard University, 1971), 468-69; Weiss, 69-70; See also Gwendolyn Wright, *Building the Dream* (New York: Pantheon, 1981), 200-03; Chase, "Process of Suburbanization."

46. Weiss, 70-72.

47. Committee report can be found in John M. Gries and James Ford, eds. *Planning for Residential Districts*, vol. 1, President's Conference on Home Building and Home Ownership (Washington, D.C.: National Capital Press, 1932), 47-124.

48. The FHA's appraisal system not only encouraged the expansion of residential development on the periphery of many metropolitan areas, but also is said to have contributed to the "redlining" of many urban neighborhoods by the banking industry. For a discussion of the politics and effects of racial restrictions, see Jackson, 197-203, 208-15; G. Wright, *Building the Dream*, 247-48.

49. Weiss, 67, 72-78, 183-84; Jackson, 241-42.

50. G. Wright, *Building the Dream*, 213.

51. Committee recommendations can be found in Gries and Ford, eds. *Planning*, 29-38.

52. Michael Southworth and Eran Ben-Joseph, *Streets and the Shaping of Towns and Cities* (New York: McGraw-Hill, 1997), 88; Weiss 67, 75, 183-84 fn. 29.

53. Scott, 208-10, 289-93. The first of its type, the Los Angeles Regional Planning Commission was founded in 1922; it influenced zoning regulations in local municipalities and in 1927 adopted a county zoning ordinance. The New York regional plan was developed between 1922 and 1931 under the direction of the Russell Sage Foundation with the expertise of preeminent Garden City planners.

54. See John Archer, "Country and City in the American Romantic Suburb," *Journal of Society of Architectural Historians* 42, no. 2 (May 1983): 139-56; Schuyler, *New Urban Landscape*, 149-66; Mary Corbin Sies, "The City Transformed," *Journal of Urban History* 14, no. 1 (November 1987): 81-111.

55. Archer, 150. See also Ann Leighton, *American Gardens of the Nineteenth Century* (Amherst: University of Massachusetts Press, 1987), 164-72; David Schuyler, *Apostle of Taste* (Baltimore: Johns Hopkins University Press, 1996).

56. Archer discusses other influential books, including William Ranlett, *The Architect* (1847); Henry Cleaveland, William Backus, and Samuel Backus, *Village and Farm Cottages* (1856); Gervase Wheeler, *Homes for the People* (1855); Calvert Vaux, *Villas and Cottages* (1857); John Claudius Loudon, *The Suburban Gardener and Villa Companion* (1838); George E. Woodward, *Woodward's Country Homes* (1865); articles in *The Horticulturalist* by Downing, Howard Daniels and others.

57. Alexander Garvin, *The American City* (New York: McGraw-Hill, 1996), 253.

58. J. John Palen, *The Suburbs* (New York: McGraw-Hill, 1995), 51-55.

59. Rowe, *Making a Middle Landscape*, 198.

60. Garvin, 254; Jackson 25-30; Clay Lancaster, *Brooklyn Heights* (New York: Dover Publications, 1980).

61. Jackson, 81-86; Raymond W. Smith, A. T. Stewart Era Buildings NRHP MRA Nomination, New York SHPO, November 14, 1978.

62. Richard Longstreth, "Maximilian G. Kern," in *Pioneers of American Landscape Design*, ed. Charles Birnbaum and Robin Karson, (New York: McGraw-Hill, 2000), 209-12; Garvin, 256-58; Stephen J. Raiche, Portland and Westmoreland Places (a.k.a. Forest Park Addition) NRHP Nomination, Missouri SHPO, February 12, 1974.

63. Newton, 471-72. See also Worley, J. C. *Nichols*.

64. Archer, 150; Schuyler, *Apostle of Taste*, 206-08.

65. Archer, 154. Archer also discusses the early suburbs of New Brighton on Staten Island and Evergreen Hamlet near Pittsburgh.

66. Schuyler, *Apostle of Taste*, 208-09; Archer, 154-55. See also Susan Henderson, "Llewellyn Park, suburban idyll," *Journal of Garden History* 7, no. 3 (1987): 221-43; Robert P. Guter, et al., Llewellyn Park NRHP Nomination, New Jersey SHPO, February 28, 1986.

67. Newton, 468. See also Archer, 155-56; Schuyler, *New Urban Landscape*, 162-66.

68. Olmsted, Vaux and Company, *Preliminary Report upon the Proposed Suburban Village at Riverside* (1868), reprinted, "Riverside, Illinois: A Residential Neighborhood Designed Over Sixty Years Ago," ed. Theodora Kimball Hubbard, *Landscape Architecture* 21, no. 4 (July 1931), 268-69, cited in Newton, 466-67.

69. Garvin, 263. Early Olmsted projects included Tarrytown Heights (1870-1872), New York; Parkside (1872-1886) in Buffalo; Fisher Hill (1884) in Brookline, Mass.; Druid Hills (1889), in Atlanta; Sudbury Park (1876-1892) near Baltimore. Later suburbs by the Olmsted Brothers further perfected the curvilinear suburb combining its naturalistic principles with features inspired by the garden city movement, such as planted medians and cul-de-sacs, and building a reputation on large projects such as Roland Park (1901) and Guilford (1912) in Baltimore; Alta Vista (1900) in Louisville; St. Francis Woods (1915) in San Francisco, and Palos Verdes (1926) near Los Angeles. See also Arleyn A. Levee, "The Olmsted Brothers' Residential Communities," *The Landscape Universe* (Wave Hill, N.Y.: Catalog of Landscape Records in the United States and National Park Service, 1993), 29-48.

70. See Karen Madsen, "Henry Vincent Hubbard," and Charles A. Birnbaum, "Samuel Parsons Jr.," in *Pioneers*, ed. Birnbaum and Karson, 177-180, 187-91.

71. Henry V. Hubbard and Theodora Kimball, *Introduction to the Study of Landscape Design* (New York: Macmillan, 1917), 175-94, plate XXXIII, op. 280; H. V. Hubbard, "The Influence of Topography on the Layout of Subdivisions," *Landscape Architecture* 18, no. 3 (April 1928): 188-99.

72. T. K. Hubbard, ed., "Riverside," 259-77; Howard K. Menhinick, "Riverside Sixty Years Later," *Landscape Architecture* 22, no. 2 (1932): 109-17; Rowe, *Making a Middle Landscape*, 205.

73. Patricia Erigerio, et al., Ladd's Addition Historic District NRHP Nomination, Oregon SHPO, August 31, 1988.

74. Wendy Laird, El Encanto Estates Residential H.D. NRHP Nomination, Arizona SHPO, January 29, 1988; Daniel Hardy, et al., Wolfli H.D. NRHP Nomination, Texas SHPO, May 21, 1992.

75. Thomas W. Hanchett, Myers Park H.D. NRHP Nomination, North Carolina SHPO, August 10, 1987.

76. Handlin, 185; Newton, 471-74. See Saily Schwenk, Crestwood NRHP Nomination, Missouri SHPO, October 8, 1998; Lauren Bricker, et al., Residential Architecture of Pasadena, California, 1895-1918: The Influence of the Arts and Crafts Movement NRHP MPS, California SHPO, August 6, 1998; John C. Terrell, Prospect H.D. NRHP Nomination, California SHPO, April 7, 1983; Esley Hamilton and James M. Denny, Brentmoor Park, Brentmoor and Forest Ridge NRHP Nomination, Missouri SHPO, September 23, 1982.

77. See Walter L. Creese, *Search for Environment—The Garden City Before and After*, rev. ed. (Baltimore: Johns Hopkins University Press, 1992).

78. See Stilgoe, 225-38; Newton, 474-78; Susan L. Klaus, *A Modern Arcadia* (Amherst: University of Massachusetts Press with the Library of American Landscape History, 2001).

79. Ken Hart, Dean Wagner, et al., Guilford H.D. NRHP Nomination, Maryland SHPO, July 19, 2001.

80. Bruce E. and Cynthia D. Lynch, Washington Highlands H.D. NRHP Nomination, Wisconsin SHPO, December 18, 1989.

81. G. Wright, *Building the Dream*, 203; Fred Mitchell and Marina King, Mariemont H.D. NRHP Nomination, Ohio SHPO, July 24, 1979.

82. Lewis Mumford, "Introduction," in *Toward New Towns for America*, by Clarence S. Stein, rev. ed., 3d ed. (Cambridge: MIT Press, 1966), 12. See also Kermit C. Parsons, "Collaborative Genius" *Journal of American Planning Association* 60, no. 4 (Autumn, 1994): 462-82; Stein, 21-35; Henry Wright, *Rehousing Urban America* (New York: Columbia University, 1935), 36-41; Peter G. Rowe, *Modernity and Housing* (Cambridge: MIT Press, 1993), 114-127.

83. Stein, 36-73; H. Wright, 42. See also Rowe, *Making a Middle Landscape*, 200-01; Cynthia L. Girling and Kenneth I. Helphand, *Yard—Street—Park* (New York: John Wiley & Sons, 1994), 59-64.

84. Stein, 74-85; H. Wright, 46-50; David J. Vater, Chatham Village H.D. NRHP Nomination, Pennsylvania SHPO, November 25, 1998.

85. Clarence Arthur Perry, "The Neighborhood Unit," Monograph One, *Regional Survey of New York and Its Environs*, vol. 7, Neighborhood and Community Planning (New York: New York Regional Plan Association, 1929), 22-140; Gries and Ford, eds., *Planning*, 80-82, 122-24; C. A. Perry, *Housing for the Machine Age* (New York: Russell Sage Foundation, 1939), 50-82. See also Hise, 33-35.

86. Gries and Ford, eds., *Planning*, 6-7, 21, 66, quotation is from 76.

87. *Ibid.*, 59.

88. *Ibid.*, 54-55.

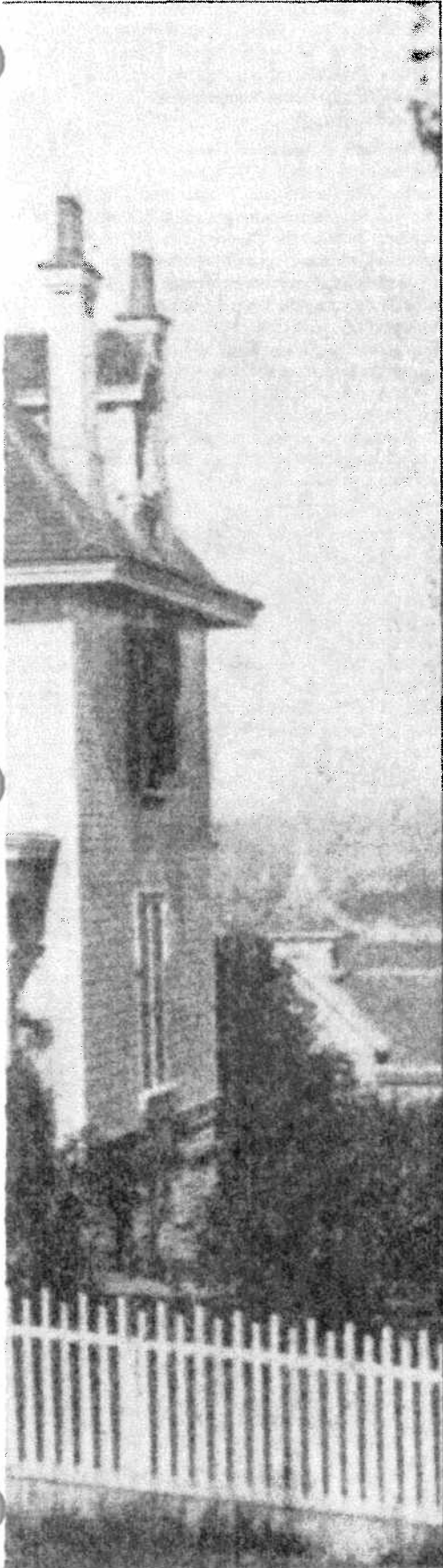
89. *Ibid.*, 52-54, 59, 76.

90. Rowe, *Making a Middle Landscape*, 204-05; Barry Cullingworth, *Planning in the USA* (London and New York: Routledge, 1997), 77. See also Girling and Helphand, 85-89; Deborah E. Abele, et al., *Historic Residential Subdivisions and Architecture in Central Phoenix, 1912-1950*, NRHP, Arizona SHPO, December 21, 1994; David Kammer, *Twentieth Century Suburban Growth of Albuquerque NRHP MPS*, New Mexico SHPO, August 3, 2001.
91. Seward H. Mott, "The Federal Housing Administration and Subdivision Planning," *Architectural Record* 19 (April 1936), 257-63.
92. FHA, *Planning Neighborhoods for Small Houses*, technical bulletin 5 (Washington, D.C.: GPO, 1936), 8-9.
93. Seward H. Mott, "The FHA Small House Program," *Landscape Architecture* 33, no. 1 (October 1942): 16; and "Land Planning in the FHA" 1933-44," *Insured Mortgage Portfolio* 8, no. 4 (1944): 12-14.
94. Miles L. Colean, "An Early FHA Experiment—A Forgotten Chapter in Housing History," *Mortgage Banker* 38, no. 8 (May 1978): 86-88; "A New Policy for Housing," *Architectural Forum* (August 1936): 150-53.
95. Rowe, *Modernity and Housing*, 127. See also James M. Goode, *Best Addresses* (Washington, D.C.: Smithsonian Institution Press, 1988), 332-36; Staff, Virginia Landmarks Commission, Colonial Village NRHP Nomination, Virginia SHPO, December 9, 1980.
96. "Building Types—Low-Rent Suburban Apartment Buildings," *Architectural Record* 86, no. 3 (September 1939): 88-114.
97. Southworth and Ben-Joseph, 88; Rowe, *Making a Middle Landscape*, 202, 205-06. See also Girling and Helphand, 90-94, 94-102; Kelly, 35-37.
98. Weiss, 45.
99. Jackson, 125-127. See Paul E. Sprague, "The Origin of Balloon Framing," *Journal of Society of Architectural Historians* 40, no. 4 (December 1981): 311-19.
100. Schuyler, *Apostle of Taste*, 57-60, 128-29.
101. For further discussion and lists of pattern books, see Clifford E. Clark Jr., *The American Family Home* (Chapel Hill: University of North Carolina Press, 1986); Alan Gowans, *The Comfortable House* (Cambridge: MIT Press, 1986); Dell Upton, "Pattern Books and Professionalism: Aspects of the Transformation of Domestic Architecture in America, 1800-1860," *Winterthur Portfolio* 19, no. 1 (spring 1984): 107-150; Gwendolyn Wright, *Moralism and the Model Home* (Chicago: University of Chicago Press, 1980).
102. Elisabeth Woodburn, "American Horticultural Books," in *Keeping Eden*, ed. Walter T. Punch (Boston: Massachusetts Horticultural Society and Bulfinch Press, 1992), 252. Other early books include: *Country Life: A Handbook of Agriculture, Horticulture and Landscape Gardening* (1859) by Robert Morris Copeland; *The Practical Gardener* (1855) by G.M. Kern; *Architecture, Landscape Gardening and Rural Art* (1867) by George E. and F.W. Woodward; and *Beautifying Country Homes: A Handbook of Landscape Gardening* (1870) by Jacob Weidenmann.
103. David Handlin, *The American Home* (Boston: Little, Brown, 1979), 171-83; David Schuyler, "Introduction," in *Victorian Gardens: Art of Beautifying Suburban Home Grounds* by Frank J. Scott (1870, reprint, Watkins Glen, New York: American Life Foundation, 1982), n.p.; Ann Leighton, *American Gardens of the Nineteenth Century* (Amherst: University of Massachusetts Press, 1987), 250-60.
104. Clark, 74-75; Gowans, 42.
105. Clark, 76-77; Gowans, 42-46; Robert Gutman, *The Design of American Housing* (New York: Publishing Center for Cultural Resources, 1985), 34-36. See also James L. Garvin, "Mail-Order Home Plans and American Victorian Architecture," *Winterthur Portfolio* 16, no. 4 (winter 1981): 309-34; Leland M. Roth, "Getting the House to the People," in *Perspectives in Vernacular Architecture IV* (1991), 188, and Michael A. "The Palliser Brothers and Their Publications," in *The Palliser Late Victorian* (Watkins Glen, N.Y.: American Life Foundation, 1978), i-iv.
106. Gowans ascribes the term "homestead-temple house" to this housing type, 94-99.
107. Clark, 131-32,
108. Clark, 167-78; Palen, 38-39.
109. See Clark, 171-91; Gowans, 74-83; Rowe, *Making a Middle Landscape*, 68-69; Robert Winter, *The California Bungalow* (Los Angeles: Hennessey & Ingalls, 1980; Clay Lancaster, *The American Bungalow* (New York: Abbeville Press, 1985). Palen used the term "bungalow suburb" in *Suburbs*, 51.
110. Gowans, 84; Rowe, *Making a Middle Landscape*, 73.
111. Gowans, 48-63; Katherine Cole Stevenson and H. Ward Jandl, *Houses by Mail* (New York: National Trust for Historic Preservation and John Wiley and Sons, 1986), 19.
112. Rowe, *Making a Middle Landscape*, 84-87; FHA, *Principles of Planning Small Houses*, technical bulletin 4, rev. ed. (Washington, D.C.: GPO, 1940), 28-29.
113. Gowans 71; Jan Jennings, "Housing the Automobile," in *Roadside America*, ed. Jan Jennings (Ames: Iowa State University Press and Society for Commercial Archeology, 1990), 95-106.
114. Virginia T. Clayton, *The Once and Future Gardener* (Boston: David R. Godine, 2000), xxiii-xxxi.
115. Woodburn, 246-48; Robert E. Grese, "Liberty Hyde Bailey" in *Pioneers*, ed. Birnbaum and Karson, 6-8.
116. Woodburn, 248, 259.
117. G. Wright, *Building the Dream*, 197-98; Janet Hutchison, "The Cure for Domestic Neglect," in *Perspectives in Vernacular Architecture II*, ed. Camille Wells (Columbia: University of Missouri, 1989), 168-78; Joseph B. Mason, *History of Housing in the U.S., 1930-1980* (Houston: Gulf Publishing, 1982), 16. See also Janet Anne Hutchison, "American Housing, Gender, and the Better Homes Movement, 1922-1935," Ph.D. dissertation (University of Delaware, 1989).
118. Gowans, 65-67; G. Wright, *Building the Dream*, 199-202; Robert T. Jones, introduction, *Small Homes of Architectural Distinction* (1929; reprinted as *Authentic Small Houses of the Twenties*, New York: Dover Publications, 1987), 22.
119. Henry Atterbury Smith, "Acknowledgement," in *The Books of A Thousand Homes*, vol. 1 (1923; reprinted as *500 Small Houses of the Twenties*, New York: Dover Publications, 1990), 5.
120. "Community Development Advantages Demonstrated by Tribune," and "Would Landscaping Help Your Grounds," *New York Tribune*, September 9, 1923; Marjorie Sewell Cautley, "Planting at Radburn," *Landscape Architecture* 21, no. 1 (October 1930), 23-29; Girling and Helphand, 65-66; Stephen Child, "Colonia Solana; A Subdivision on the Arizona Desert," *Landscape Architecture* 19, no. 1 (October 1928), 6-13. In *Pioneers*, ed. Birnbaum and Karson, see Mary Blaine Korff, "Stephen Child," 49-52; Cydney E. Millstein, "Sidney J. Hare and S. Herbert Hare," 162-68; Nell Walker, "Marjorie Sewell Cautley," 47-49; and Behula Shah, "Ralph E. Griswold," 151-56.
121. Virginia Lopez Begg, "Mrs. Francis King (Louisa Yeomans King)," in *Pioneers*, ed. Birnbaum and Karson, 216-17. In *Pioneers*, see also biographies of Steele, Bottomley, Requa, and Waugh.
122. Committee reports, including the results of a survey of small houses and a scorecard for home appraisal, can be found in John M. Gries and James Ford, eds., *House Design, Construction and Equipment*. Proceedings of the President's Conference on Home Building and Home Ownership (Washington, D.C.: National Capital Press, Inc., 1932), 1-110.
123. Committee report can be found in Gries and Ford, eds., *Planning*, 163-209.
124. FHA, *Planning Small Houses* (1936), 21-23.
125. Hise, 68-69; FHA, *Planning Small Houses* (1936-1939 eds.), 24-27.
126. *Ibid.*, 28-33.
127. FHA, *Planning Small Houses* (rev. ed., 1940), 14-15.
128. *Ibid.*, 37-43.
129. Rental Housing Division, "Architectural Bulletins" (Washington, D.C.:FHA, 1940). See also H. Wright, *Rehousing Urban America*, 29-50, 99-102, 119-28; Perry, *Housing for Machine Age*, 44-48. Marie Ryan, Buckingham Historic District NRHP Nomination, Virginia SHPO, January 21, 1999.
130. Early in the twentieth century, Architect Grosvenor Atterbury used prefabrication methods in the construction of houses for Forest Hills, Long Island, and Frank Lloyd Wright introduced a process called, American System Ready-Cut, in the construction of several duplexes and small houses in Milwaukee. See Alfred Bruce and Harold Sandbank, *A History of Prefabrication* (New York: John B. Pierce Foundation, 1943; reprint, New York: Arno Press, 1972); and John Burns, "Technology and Housing," in *Preserving the Recent Past*, ed. Slaton and Shiffer, 11/129-35.
131. Hise, 56-57; Bruce and Sandbank, 10-11.
132. Hise, 58, 62-63; Bruce and Sandbank, 11-12.

133. *Ibid.*, 11, 13-14, 74.
134. FHA, *Recent Developments in Building Construction* (Washington, D.C.: GPO, 1940), 9, 12.
135. Bruce and Sandbank, 71-74; for a Directory of Wartime Prefabricators, see 61-68. See also H. Ward Jandl, et al. *Yesterday's Houses of Tomorrow* (Washington D.C.: Preservation Press, 1991), 183-99.
136. Gutman, 12. See also Gilbert Herbert, *The Dream of the Factory-Made House* (Cambridge: MIT Press, 1984).
137. Mason, 56-57; *Better Homes and Gardens* 33, no. 3 (March 1955), 192.
138. Jackson, 233.
139. *Ibid.*, 235.
140. Clark, 221-23; Jackson, 234-35; G. Wright, *Building the Dream*, 251-53.
141. See also Clark, 217-36; G. Wright, *Building the Dream*, 256-58, and, for profiles on postwar developers, Mason, 48-51.
142. Kelly, 16, 18, 59-65; Rowe, *Modernity and Housing*, 196-97; Jackson, 235; Girling and Helphand, 94-102.
143. David Gebhard, "Royal Barry Wills and the American Colonial Revival," *Winterthur Portfolio* 27, no. 1 (spring 1992): 45.
144. Clark, 211; Rowe, *Making a Middle Landscape*, 73-77.
145. See Clark, 193-216; David Bricker, "Ranch Houses Are Not All the Same," in *Preserving the Recent Past 2*, ed. Slaton and Foulks, 2/115-23; and "Cliff May," in *Toward a Simpler Life*, ed. Robert Winter (Berkeley, University of California Press, 1997), 283-90; Esther McCoy and Evelyn Hitchcock, "The Ranch House," in *Home Sweet Home*, ed. Charles W. Moore (New York: Rizzoli, 1983), 84-89.
146. Clark, 201.
147. Kelly, 80-84.
148. Rowe, 82-84.
149. Jandl, 101, 128-39.
150. Elizabeth A.T. Smith, ed., *Blueprints for Modern Living* (Cambridge: MIT Press, 1989), 75-76; See also Esther McCoy, *Case Study Houses, 1945-1962* (Reprint of *Modern California Houses*, Santa Monica: Hennessey and Ingalls, 1977), 188-93.
151. For architects working in this style, see Mason, 73-77.
152. Mason, 53; Diane Wray, *Arapahoe Acres* (Englewood, Col.: Wraycroft, 1997), 4-5, and Arapahoe Acres NRHP Nomination, Colorado SHPO, November 3, 1998.
153. John Hancock Callender, *Before You Buy a House* (New York: Crown Books, 1953), 31-32, 88-89, 117-19.
154. *Hollin Hills* (Alexandria, Vir.: Civic Association of Hollin Hills, 2000), 181.
155. Clark, 215; G. Wright, *Building the Dream*, 251; Helen Stark, "How to Stretch Space in a Small House," *Homes and Gardens*, 33, no. 3 (March 1955), 56-59+; Thomas Hine, "The Search for the Postwar House," in *Blueprints*, ed. Smith, 178-81.
156. Mason, 78; Rowe, *Modernity and Housing*, 126-27; Stein, 86-91, 188-216.
157. *Architectural Record*, eds., *Apartments and Dormitories* (New York: F.W. Dodge, 1958), 9. Lake Shore Drive Apartments and 100 Memorial Drive were recognized in the AIA's Centennial list of the fifty most influential buildings in America.
158. Rowe, *Making a Middle Landscape*, 93-94; Hines, 168; Marc Treib, "Thomas Church, Garrett Eckbo, and the Postwar California Garden," in *Preserving the Recent Past 2*, ed. Slaton and Foulks, 2-149. See also Marc Treib and Dorothee Imbert, *Garrett Eckbo* (Berkeley: University of California Press, 1997).
159. David Streatfield, "Western Expansion," in *Keeping Eden*, ed. Punch, 110-12.
160. See Callender, 67-76; Marc A. Klopfer, "Theme and Variation at Hollin Hills," and Daniel Donovan, "The Hundred Gardens," in *Dan Kiley*, ed. William Saunders (Princeton: Princeton Architectural Press, 1999), 37-64.
161. Claudia R. Brown, "Surveying the Suburbs," in *Preserving the Recent Past*, ed. Slaton and Shiffer, II/105-12.



RESOURCES



An 1866 stereopticon view of the McGrew House (1862) in Glendale, Ohio, shows the influence that the writings of Catharine E. Beecher and Andrew Jackson Downing had on mid-nineteenth-century domestic design and the rise of a "picturesque" aesthetic for suburban villages that encompassed romantic revival styling, decorative vergeboards, capped chimneys, elaborately worked porch details, wooden fences, cupola-topped carriage houses, and neatly planted yards with an abundance of specimen trees and shrubbery. (Photograph by Glessner, courtesy Glendale Heritage Preservation)

REFERENCE SERVICES AND SPECIALIZED REPOSITORIES

The Catalog of Landscape Records in the United States <www.wavehill.org/catalog> A national catalog designed to assist researchers find records and repositories documenting the work of landscape architects and landscape architectural firms in the United States. Catalog publishes a quarterly newsletter featuring special collections, advances in records management such as planning digital collections, and researcher queries.

WAVE HILL

675 West 252nd Street
Bronx, New York 10447-2899
Email: catalog@wavehill.org

US COPAR/Cooperative Preservation of Architectural Records. A national network of State or regional committees committed to the preservation of architectural records. A national newsletter for COPAR was published from 1980-1985 and 1996-1997. Regional guides to architects and architectural firms have been published for New York City, Chicago, Boston, and Philadelphia. A nationwide list of state and regional committees is maintained by the Massachusetts committee and is available electronically <<http://libraries.mit.edu/rvc/mcopar/copar-contactinfo.html>>. National inquiries should be addressed to:

C. Ford Peatross

Curator of Architecture, Design, and Engineering Collections
Prints and Photographs Division
Library of Congress
Washington, DC 20540-4840
Email: cpea@loc.gov

U.S. Geological Survey <<http://mapping.usgs.gov>> makes available U.S.G.S topographic maps. As part of the Global Land Information System (GLIS), it also makes available the aerial surveys, called digital orthophoto quadrangles or DEQ's, used to revise digital line graphs and topographic maps <<http://earthexplorer.usgs.gov>>.

VAF/Vernacular Architecture Forum <www.vernaculararchitecture.org> maintains a link to a bibliography of published

writings on topics such as vernacular housing, landscape design, and planning. Organization regularly publishes a newsletter that contains current bibliography. Proceedings of annual meetings are published periodically by the University of Tennessee Press, Knoxville, and University of Missouri Press, Columbia.

Library of Congress <www.loc.gov> maintains an extensive library collection, including books, periodicals, prints and photographs, maps, and microfiche versions of collections in other repositories. A catalog of bibliographical references and a number of research tools are available online. The Manuscripts Division contains the Frederick Law Olmsted Papers and records of the American Civic Association. Prints and Photographs Collection maintains many original materials and offers an online catalog of many of its holdings; its holdings include the maps of the Sanborn Fire Insurance Company, which are currently being digitized (along with those maintained by the Bureau of Census) and are being made available to libraries on CD by a private vendor. A complete set of *Garden and Forest* is available online <www.loc.gov/preserv/prd/gardfor>.

Oral History Association <www.dickinson.edu/organizations/oha.html> maintains an up-to-date bibliography and "Oral History Evaluation Guidelines" (Oral History Association, Pamphlet Number 3, adopted 1989, revised Sept. 2000). Association publishes *Oral History Review* twice a year.

Library of the U. S. Department of Housing and Urban Development, Washington, D.C. <www.hud.gov>. Extensive collection of literature on the history of suburbanization and housing in the United States, including the multi-volume Proceedings of President's Conference on Home Building and Home Ownership (1932) and technical bulletins, circulars, and manuals published by the Federal Housing Administration in the 1930s and 1940s.

Olmsted Archives/Frederick Law Olmsted National Historical Site, 99 Warren Street, Brookline, Massachusetts 02445 <www.nps.gov/frla/>. Collection includes general plans and drawings for the firm's many subdivisions. Selected finding

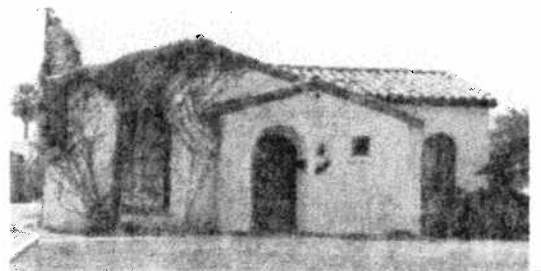
aids and guides to the collection are available. A reference volume listing Olmsted projects, The Master List of Design Projects of the Olmsted Firm, 1857-1950 (1987), has been published by the National Association for Olmsted Parks, 1987.

Archives of American Gardens, Horticultural Services Division, Smithsonian Institution, Washington, D.C. <www.si.edu/horticulture/res_ed/AAG/collections> includes the Garden Club of America Collection, containing more than 40,000 images documenting private and public gardens across the United States, and the J. Horace McFarland Collection, containing glass lantern slides and black and white photographs, many from McFarland's business as a printer of seed and nursery catalogs. Smithsonian's Horticultural Branch Library maintains an extensive collection of books, trade catalogs, and periodicals related to horticulture and landscape design.

Division of Rare Books and Manuscripts Collection, Cornell University, Ithaca, New York <<http://rbc.library.cornell.edu/collections/>>. A special collection of manuscripts, drawings, blueprints, and other records pertaining to landscape architecture, architecture and city planning, includes records of masters of design such as John Nolen and Clarence Stein, as well as records of the Regional Plan Association responsible for the New York Regional Plan of the 1920s.

National Agricultural Research Library, Beltsville, Maryland <www.nal.usda.gov/>. Extensive library of books on agriculture, horticulture, and landscape architecture, and circulars and bulletins produced nationwide by agricultural extension services and agricultural research stations, including those on home landscaping, roadside plantings, and village improvements. Online catalog, *Agricola*, is available <www.nal.usda.gov/ag98/english/catalog-basic.html>.

Environmental Design Archives, University of California, Berkeley <www.ced.berkeley.edu/cedarchives/>. Collections document the work of many prominent West Coast architects and landscape architects, including Julia Morgan,



Charles Sumner Greene, Garrett Eckbo, Thomas D. Church, and William Wurster. An index describing each collection and providing biographical and bibliographical information is available <www.oac.edlib.org>.

Department of Special Collections, Library of the University of California, Los Angeles <www.library.ucla.edu>. Principal repository for the records of architect A. Quincy Jones, including several thousand sets of plans and presentation boards. A catalog is currently being compiled.

Architecture and Design Collection, University Art Museum, University of California, Santa Barbara <www.uam.ucsb.edu>. Extensive repository containing original drawings, specifications, manuscripts, photographs, and models representing more than 350 architects and landscape architects, including Douglas Baylis, Stephen Child, Thomas D. Church, Charles Eames, Garrett Eckbo, Irving Gill, Charles and Henry Greene, Myron Hunt, Reginald Johnson, Cliff May, Richard Neutra, Ralph Rapson, Richard Requa, Lloyd Wright, and Florence Yoch.

Avery Architectural and Fine Arts Library, Columbia University <www.columbia.edu/cu/lweb/indiv/avery>. Extensive collection of books, catalogs, plans, periodicals, and oral history collections covering themes in architecture, planning, landscape architecture, and New York area development. Many of the Avery's extensive collection of trade catalogs, architectural guides, and periodicals are available in microfiche in major libraries.

Frances Loeb Library, Harvard University, Graduate School of Design, Cambridge, Massachusetts <www.gsd.harvard.edu/library/specialcollections.html>. Special collections include manuscripts, drawings, and plans by a number of noted architects, planners, and landscape architects, including Arthur C. Comey, Eleanor Raymond, Charles Mulford Robinson, Hugh Stubbins, Arthur Shurcliff, Dan Kiley, Robert H. Whitten, Walter Gropius, and John C. Olmsted. Also includes the photographs of photojournalist Jessie Tarbox Beals, including numerous views of residences and gardens.

Dumbarton Oaks Research Library, Washington, D.C. <www.doaks.org/>. Contains an extensive collection of books and periodicals on landscape architecture and horticulture.

Library of the Arnold Arboretum, Jamaica Plain, Massachusetts <www.icls.harvard.edu/>. In conjunction with the Institute for Cultural Landscape Studies, the library maintains an expanding collection of works in landscape conservation, design, history, management, and preservation, particularly related to activities in the northeastern United States.

Winterthur Library and Archives, Wilmington, Delaware <www.winterthur.org/index-library.html>. Major library of American domestic design, especially furniture and furnishings. Printed Books and Periodicals Collection contains an extensive collection of home and garden magazines.

Philadelphia Architects and Buildings Project, Philadelphia, Pennsylvania <www.philadelphiabuildings.org>. A richly illustrated, web-based database providing free public access to information on the Philadelphia region's built environment and on the work of Philadelphia-based architects. Project is jointly sponsored by The Athenaeum of Philadelphia, University of Pennsylvania Architectural Archives, Philadelphia Historical Commission, and Pennsylvania Historical and Museum Commission.

Eichler Network <www.eichlernetwork.com>. California-based organization provides technical information about history and home repair to owners of homes built by merchant builder Joseph Eichler. In addition to website, network publishes a regular newsletter.

National Archives and Record Centers <www.nara.gov>. Several record groups (R.G.) contain information about Federal housing programs, as well as a wealth of statistical and research data acquired on local housing trends, methods of home construction, and home financing. Although most records are located in Archives II in College Park, Maryland, additional records may exist in regional repositories. Preliminary

inventories (P.I.) are available on-line and in published form for most record groups.

Records of the Federal Housing Administration (FHA), dating from 1934, are found in R.G. 31 (P.I. 111, 1965, and P.I. 45, 1952) and includes selected applications for FHA-approved homes, cartographic and written records pertaining to selected examples of FHA-insured, large-scale rental housing complexes, and real estate survey records and rating maps. Records include a representative group of applications for FHA mortgage approval. Unfortunately many of the administrative files for FHA's early years have been lost.

Records of the Emergency Fleet Corporation of the U.S. Shipping Board are found in R.G. 32 (P.I. 97, 1956) and the U.S. Housing Corporation of the U.S. Department of Labor are found in R.G. 3 (P.I. 140, 1962) include textual, cartographic, and photographic records of World War I emergency housing, 1918-19.

Records for the National Housing Administration established in 1942 to consolidate all Federal housing programs (U.S. Public Housing Authority, Federal Housing

A wide variety of plans for "architect-designed" small houses were available to local builders in the 1920s and 1930s through architect service bureaus, trade publications, stock-plan businesses, and even savings and loan associations. From left to right: Tudor Revival house, Chautauqua Park Historic District, Des Moines (photo by Barbara Beving Long, courtesy of State Historical Society of Iowa); Moderne house, Westheight Manor Historic District, Kansas City, Kansas (photo courtesy Kansas Historical Society); Spanish Colonial Revival house, F. Q. Story Historic District, Phoenix (photo by Robin Baldwin, courtesy Arizona Office of Historic Preservation); Tudor Revival house, Glenview Historic District, Memphis (photo by Carroll van West, courtesy Tennessee Historical Commission); English Colonial Revival house, Shaker Village Historic District, Shaker Heights, Ohio (photo by Audra Bartley, courtesy Ohio Historic Preservation Office); Modern/International Style house, Fort Street Historic District, Boise (photo by Susanne Lichtenstein, courtesy State Historical Society of Idaho).



Administration, Federal Home Loan Bank Board, and World War II housing programs) into one agency are found in the Records of the **Housing and Home Finance Agency**, R.G. 207 (P.I. 164). These include FHA files on housing statistics and market analyses as well as the records of the Central Housing Committee which was established in 1935 upon the recommendation of the National Resources Board and served as a clearing-house on all matters pertaining to housing, including land use, prefabricated methods of construction, and financing.

Records of the **Federal Home Loan Bank Board** are found in R.G. 195 (P.I. NC-94, 1965, manuscript form); cartographic records include several hundred small-house designs approved for use by the Federal Home Building Service Plan, 1938-1942. Records of Defense Homes Corporation, 1940-1949, are among the Records of the Reconstruction Finance Corporation in R.G. 234. Records of the U.S. Department of Housing and Urban Development are found in R.G. 220. Records for the U.S. Census Records are found in R.G. 29. Records of the U.S. Department of Commerce, in R.G. 167, contain the records of the National Bureau of Standards and the President's Conference on Home Building and Ownership, 1930-33.

HISTORIC PERIODICALS

Popular Magazines

American Builder
The American Home
American Homes and Gardens
Better Homes and Gardens
Bungalow Magazine
California Arts and Architecture
California Garden
Carpentry and Building
Cosmopolitan
Country Life in America
The Craftsman
Delineator
The Family Circle and Parlor Annual (The Family Circle)
Garden and Forest
The Garden Magazine (Garden Magazine and Home Builder)
Gardener's Monthly and Horticulturist
Good Housekeeping
Harper's Monthly
The Horticulturist
The House Beautiful
House and Garden

Hovey's Magazine of Horticulture
Keith's Magazine
Ladies' Home Journal
Living Magazine
McCall's
National Builder
Parents' Magazine
Park and Cemetery and Landscape Gardening
Scribner's Magazine
The Small House
Sunset Magazine
Woman's Home Companion

Professional and Trade Periodicals

American Architect
American Architect and Building News
American Builder
American Carpenter and Builder
American City
American Civic and Planning Annual
American Garden
Annals of Real Estate Practice
Architectural Forum (formerly Brickbuilder)
Architectural Record
Architectural Review and American Builder's Journal
Arts and Architecture
Building Age (later Building Age and The Builder's Journal)
City Planning
House and Home
Housing
Inland Architect
Insured Mortgage Portfolio
Garden Club of America bulletins
Journal of the New England Garden History Society
Landscape Architecture
NAHB Builder
National Real Estate Journal
Perfect Home
Popular Home
Professional Builder
Progressive Architecture (formerly Pencil Points)
Regional Planning Notes
Southwest Builders and Contractors
Urban Land Institute Bulletin
Western Architect
Western Horticultural Review (Horticultural Review and Botanical Magazine)

RECOMMENDED READING

Related National Register Bulletins

Defining Boundaries for National Register Properties (rev. 1997)
Guidelines for Evaluating and Documenting Properties Associated with Significant Persons
Guidelines for Evaluating and Nominating Properties That Have Achieved Significance Within the Last Fifty Years (rev. 1996)
Guidelines for Evaluating and Registering Archeological Sites and Districts (rev. 2001)
Guidelines for Local Surveys: A Basis for Preservation Planning (rev. 1985)
How to Apply the National Register Criteria of Evaluation
How to Complete the National Register Multiple Property Documentation Form
How to Complete the National Register Registration Form
How to Evaluate and Nominate Designed Historic Landscapes
How to Prepare National Historic Landmark Nominations
Researching A Historic Property (rev. 1998).
 Videotape, *The Multiple Property Approach*.

General History

Fishman, Robert. *Bourgeois Utopias: The Rise and Fall of Suburbia*. New York: Basic Books, 1987.
 Ford, Larry R. *Cities and Buildings: Skyscrapers, Skid Rows, and Suburbs*. Baltimore and London: Johns Hopkins University Press, 1994.
 Hayden, Dolores. *The Grand Domestic Revolution: A History of Feminist Design for American Homes, Neighborhoods, and Cities*. Cambridge: MIT Press, 1981.
 Jackson, Kenneth T. *Crabgrass Frontier: The Suburbanization of the United States*. New York: Oxford University Press, 1985.
 Stilgoe, John R. *Borderland: Origins of the American Suburb, 1820-1939*. New Haven and London: Yale University Press, 1988.
 Wright, Gwendolyn. *Building the Dream: A Social History of Housing in America*. New York: Pantheon Books, 1981.

Methodology, References, and Style Guides

Abele, Deborah Edge, and Grady Gammage Jr. "Shifting Signposts of Significance." In *Preserving the Recent Past 2*, ed. Deborah Slaton and William G. Foulks. Washington, D.C.: Historic Preservation Education Foundation, Association for Preservation Technology, and National Park Service, 2000.

Alanen, Arnold R., and Robert Melnick, eds. *Preserving Cultural Landscapes in America*. Baltimore: Johns Hopkins University Press, 2000.

Alliance for Historic Landscape Preservation. *Historic Landscape Resource Manual*. Natchitoches, Louisiana: author and National Center for Preservation Technology and Training, 1999.

Ames, David L. "Interpreting Post-World War II Suburban Landscapes as Historic Resources." In *Preserving the Recent Past*, ed. Deborah Slaton and Rebecca A. Shiffer. Washington, D.C.: Historic Preservation Education Foundation, 1995.

_____. "Understanding Suburbs as Historic Landscapes Through Preservation." In *Changing Suburbs: Foundation, Form and Function*, ed. Richard Harris and Peter J. Larkham. London: E & FN Spon, 1999.

Baker, John Milnes. *American House Styles: A Concise Guide*. New York: W.W. Norton, 1994.

Beveridge, Charles E., and Carolyn Hoffman, comps. *The Master List of Design Projects of the Olmsted Firm, 1857-1950 (1987)*. New York: National Association for Olmsted Parks, 1987.

Birnbaum, Charles A., ed. *The Landscape Universe: Historic Designed Landscapes in Context*. Wave Hill, New York: Catalog of Landscape Records in the United States and the National Park Service, 1994.

_____, and Robin Karson, eds. *Pioneers of American Landscape Design*. New York: McGraw-Hill, 2000.

Blumenson, John J. G., and Nikolaus Pevsner. *Identifying American Architecture: A Pictorial Guide to Styles and Terms: 1600-1945*. Revised ed. New York: W.W. Norton, 1990.

Brent, Ruth and Benyamin Schwarz, eds. *Popular American Housing: A Reference Guide*. Westport, Conn.: Greenwood Press, 1995.

Brown, Claudia R. "Surveying the Suburbs: Back to the Future?" In *Preserving the Recent Past*, ed. Slaton and Shiffer.

Carley, Rachel. *The Visual Dictionary of American Domestic Architecture*. New York: Henry Holt, 1997.

Cloues, Richard R. "Architectural History and Historic Preservation: Olmsted's Druid Hills." *CRM* 14, no. 2 (June 1980): 1-4.

_____. "Historic Residential Landscapes in Georgia: The Georgia Living Places Project." *CRM* 14, no. 6 (1991): 4-6+.

Craig, Robert W. *New Jersey's Building Contracts and Mechanic Liens*. Trenton, N.J.: New Jersey Department of Environmental Protection, 1999.

Directory of Boston Architects, 1846-1970. Cambridge, Massachusetts: COPAR, 1984.

Dubrow, Gail, and Jennifer Goodman. *Restoring Women's History through Historic Preservation*. Baltimore: Johns Hopkins University Press, forthcoming.

Ernststein, Julie H. "Landscape Archeology and the Recent Past: A View from Bowie, Maryland." In *Preserving the Recent Past 2*, ed. Slaton and Foulks.

Francis, Dennis Steadman. *Architects in Practice, New York City, 1840-1900*. New York: COPAR, 1979.

Georgia Department of Natural Resources. "Georgia's Living Places: Historic Houses in their Landscaped Settings." Atlanta: Georgia Department of Natural Resources, 1991.

Gottfried, Herbert, and Jan Jennings, ed. *American Vernacular Design, 1870-1940: An Illustrated Glossary*. New York: Van Nostrand Reinhold, 1985.

Harris, Richard. "Reading Sanborns for the Spoor of the Owner-Builder, 1890s-1950s." In *Perspectives in Vernacular Architecture VII: Exploring Everyday Landscapes*, ed. Annmarie Adams and Sally McMurry. Knoxville: University of Tennessee Press, 1997.

Hays, Rory. "Take a Ride in the Mark II: Road Map to Post-World War II Residential Design Guidelines." In *Preserving the Recent Past 2*, ed. Slaton and Foulks.

Hitchcock, Henry-Russell. *American Architectural Books: A List of Books, Portfolios and Pamphlets on Architecture and Related Subjects Published in the United States before 1895*. New York: DaCapo Press, 1976.

Howe, Barbara J., Dolores A. Fleming, Emory L. Kemp, and Ruth Ann Overbeck. *House and Homes: Exploring Their History*. The Nearby History Series. Nashville, Tenn.: American Association for State and Local History, 1987.

Jensen, Bruce, and Mary Dillman. *Guidelines for Listing Your Neighborhood in the National Register of Historic Places*. Austin: Texas Historical Commission, 1999.

Jester, Thomas C., ed. *Twentieth-Century Building Materials: History and Conservation*. New York: McGraw-Hill, 1995.

Keller, Genevieve P. "The Inventory and Analysis of Historic Landscapes: Defining the Approach." *Forum Journal* 7, no. 3 (May/June 1993): 26-35.

Krueckeberg, Donald A., ed. *American Planner: Biographies and Recollections*. 2d ed. New Brunswick, N.J.: Center for Urban Policy Research, 1994.

Longstreth, Richard. "The Extraordinary Post-War Suburb." *Forum Journal* 15, no. 1 (fall 2000): 16-25.

Martin, Frank Edgerton. "Before New Urbanism: Postwar Subdivisions Offer Surprising Lessons." *Landscape Architecture* 91, no.12 (December 2001): 48-51+.

Massey, James C., and Shirley Maxwell. *House Styles in America: The Old-House Journal Guide to the Architecture of American Homes*. New York: Penguin, 1999.

McAlester, Virginia, and Lee McAlester. *America's Historic Neighborhoods and Museum Houses: The Western States*. New York: Alfred A. Knopf, 1998.

_____. *A Field Guide to American Houses*. New York: Alfred A. Knopf, 1991.

McClelland, Linda Flint. "Gateway to the Past: Establishing a Landscape's Context for the National Register." In *The Landscape Universe*, ed. Birnbaum, 81-90.

_____. "Historic Residential Suburbs in the National Register." *CRM* 25, no. 1 (2002).

Mercier, Laurie, and Madeline Buckendorf. *Using Oral History in Community History Projects*. Los Angeles: Oral History Association Pamphlet Series No.4, 1992.

Moss, Roger W., and Sandra L. Tatum. *Biographical Dictionary of Philadelphia Architects: 1700-1930*. Boston: G.K. Hall, 1985.

Poppeliers, John C., Nancy Schwartz, and S. Allen Chambers. *What Style Is It? A Guide to American Architecture*. New York: John Wiley and Sons, 1995.

Ritchie, Donald A. *Doing Oral History*. New York: Twayne Publishers, 1995.

Schalck, Harry G. "Mini-Revivisionism in City Planning: The Planners of Roland Park." *Journal of Society of Architectural Historians* 29, no. 4 (December 1970): 347-9.

Shrock, Nancy Carlson. "Images of New England: Documenting the Built Environment." *American Archivist* 50 (Fall 1987): 474-95.

Shull, Carol D., and Beth Savage. "From the Glass House to Stonewall: National Register Recognition of the Recent Past." In *Preserving the Recent Past 2*, ed. Slaton and Foulks.

Sies, Mary Corbin. "Toward a Performance Theory of the Suburban Ideal, 1877-1917." In *Perspectives in Vernacular Architecture IV*, ed. Bernard L. Herman and Thomas Carter. Columbia: University of Missouri Press, 1991, 197-207.

Sommer, Barbara W., and Mary Kay Quinlan. "A Guide to Oral History Interviews." Technical Leaflet #210, included in *History News*, vol. 55, number 3, summer 2000. Nashville, Tenn.: American Association of State and Local History, 2000.

Terrell, Greta. *Getting to Know Your 20th Century Neighborhood*. Information Sheet. Washington, D.C.: National Trust for Historic Preservation, 1996.

Tishler, William H., ed. *American Landscape Architecture: Designers and Places*. Washington, D.C. Preservation Press and John Wiley, 1990.

Upton, Dell. "Pattern Books and Professionalism: Aspects of the Transformation of Domestic Architecture in America, 1800-1860." *Winterthur Portfolio* 19, no. 1 (spring 1984): 107-150.

Walker, Lester. *American Shelter: An Illustrated Encyclopedia of the American Home*. Woodstock, New York: Overlook Press, 1997.

Whiffen, Marcus. *American Architecture Since 1780: A Guide to the Styles*. Rev. ed. Cambridge: MIT Press, 1992.

Withey, Henry F., and Elsie Rathburn Withey. *Biographical Dictionary of American Architects*. Detroit: Omnigraphics, 1996.

Wray, Diane. "Arapahoe Acres: Preserving a Postwar Modernist Subdivision." In *Preserving the Recent Past 2*, ed. Slaton and Foulks.

Political and Social History

Baxandall, Rosalyn, and Elizabeth Ewen. *Picture Windows: How the Suburbs Happened*. New York: Basic Books, 2000.

Buder, Stanley. *Visionaries and Planners: The Garden City Movement and the Modern Community*. New York: Oxford University Press, 1990.

Bruegmann, Robert. "The Twenty-Three Percent Solution." *American Quarterly* 46, no. 1 (March 1994): 31-34.

Crawford, Margaret. *Building the Workingman's Paradise: The Design of American Company Towns*. London: Verso Books, 1993.

Checkoway, Barry. "Large Builders, Federal Housing Programs, and Postwar Suburbanization." *International Journal of Urban and Regional Research* 4, no. 1 (March 1980): 21-45.

Gardner, Todd. "The Slow Wave: The Changing Residential Status of Cities and Suburbs in the United States, 1850-1940." In *North American Cities and Suburbs*, ed. Richard Harris. Special Issue. *Journal of Urban History* 27, no. 3 (March 2001): 293-312.

Harris, Richard. "American Suburbs: A Sketch of a New Interpretation." *Journal of Urban History* 15, no. 1 (November 1988): 98-103.

—. "Working-Class Home Ownership in the American Metropolis." *Journal of Urban History* 17, no. 1 (November 1990): 46-9.

—. "The Unplanned Blue-Collar Suburb in Its Heyday." In *Geographical Snapshots of North America*, ed. Donald G. Janelle. New York: Guilford Press, 1992.

—, ed. *North American Cities and Suburbs*. Special Issue. *Journal of Urban History* 27, no. 3 (March 2001).

Harris, Richard, and Robert Lewis. "The Geography of North American Cities and Suburbs, 1900-1950: A New Synthesis." In *North American Cities and Suburbs*, ed. Harris, 262-92.

Knox, Paul L. *Urbanization: An Introduction to Urban Geography*. Englewood Cliffs, N.J.: Prentice Hall, 1994.

Jackson, Kenneth T. "Race, Ethnicity, and Real Estate Appraisal: The Home Owner's Loan Corporation and the Federal Housing Administration." *Journal of Urban History* 6, no. 4 (August 1980): 419-52.

Judd, Dennis R., and Todd Swanstrom. *City Politics: Private Power and Public Policy*. New York: Harper Collins, 1994.

Lake, Robert W. *The New Suburbanites: Race and Housing in the Suburbs*. New Brunswick, N.J.: Center for Urban Policy Research, Rutgers University, 1981.

Marsh, Margaret. "Reading the Suburbs." *American Quarterly* 46, no. 1 (March 1994): 40-48.

—. *Suburban Lives*. New Brunswick: Rutgers University Press, 1990.

Martinson, Tom. *The American Dream-scape: The Pursuit of Happiness in Postwar Suburbia*. New York: Carrol and Graf Publishers, 2000.

Modell, John. "Suburbanization and Change in the American Family." *Journal of Interdisciplinary History* 9, Spring 1979, 621-46.

Radford, Gail. *Modern Housing for America: Policy Struggles in the New Deal Era*. Chicago: University of Chicago Press, 1996.

Sharpe, William, and Leonard Wallock. "Bold New City or Built-Up 'Burb? Redefining Contemporary Suburbia." *American Quarterly* 46, no. 1 (March 1994): 1-30.

—. "Contextualizing Suburbia." *American Quarterly* 46, no. 1 (March 1994): 55-61.

Sies, Mary C. "The Domestic Mission of the Privileged American Suburban Home-maker, 1877-1917: A Reassessment." In *Making the American Home: Middle Class Women and Domestic Material Culture, 1840-1940*, ed. Pat Browne and Marilyn Ferris Motz. Bowling Green, Kentucky: BGSU Popular Press, 1988.

—. "Moving Beyond Scholarly Orthodoxies in North American Suburban History." In *North American Cities and Suburbs*, ed. Harris, 355-61.

—. "North American Suburbs, 1880-1950: Cultural and Social Reconsiderations." In *North American Cities and Suburbs*, ed. Harris, 313-46.

Silver, Marc, and Martin Melkonian, ed. *Contested Terrain: Politics and Participation in the Suburbs*. Westport, Conn.: Greenwood Publishing Group, 1995.

Szylyan, Kristin M. "Industrial Housing Reform and the Emergency Fleet Corporation." *Journal of Urban History* 25, no. 5 (July 1999): 647-89.

Thomas, June Manning. "The Forces of Urban Heterogeneity Can Triumph." *American Quarterly* 46, no. 1 (March 1994): 49-54.

Topalov, Christian. "Scientific Urban Planning and the Ordering of Daily Life: The First 'War Housing' Experiment in the United States, 1917-1919." *Journal of Urban History* 17, no. 1 (November 1990): 14-45.

Waldie, D.J. *Holy Land: A Suburban Memoir*. New York: St. Martin's Press, 1996.

Wiese, Andrew. "The Other Suburbanites: African American Suburbanization in the North Before 1950." *Journal of American History* 85, no. 4 (March 1999): 1495-524.

_____. "Places of Our Own: Suburban Black Towns before 1960." *Journal of Urban History* 19, no. 3 (May 1993): 30-54.

_____. "Stubborn Diversity: A Commentary on Middle-Class Influence in Working-Class Suburbs." In *North American Cities and Suburbs*, ed. Harris, 346-54.

Weiss, Marc A. *Own Your Own Home: Housing Policy and Home Ownership in America*. New York: Columbia University Press, 1991.

Wright, Gwendolyn. *Moralism and the Model Home: Social Conflict in Chicago, 1873-1913*. Chicago: University of Chicago Press, 1980.

Community Planning, Real Estate Development, and Subdivision Design

Alanen, Arnold R. "Elbert Peets: History as Precedent in Midwestern Landscape Design." In *Midwestern Landscape Architecture*, ed. William H. Tishler. Urbana and Chicago: University of Illinois Press, 2000.

Archer, John. "Country and City in the American Romantic Suburb." *Journal of Society of Architectural Historians* 42, no. 2 (May 1983): 139-56.

_____. "Ideology and Aspirations: Individualism, the Middle Class, and the Genesis of the Anglo-American Suburb." *Journal of Urban History* 14, no. 2 (February 1988): 214-53.

Batchelor, Peter. "The Origin of the Garden City Concept of Urban Form." *Journal of Society of Architectural Historians* 28 (1969): 184-200.

Beveridge, Charles E. and Paul Rocheleau. *Frederick Law Olmsted: Designing the American Landscape*. New York: Universe Publishing, 1998.

Binford, Henry C. *The First Suburbs: Residential Communities on the Boston Periphery, 1815-1860*. Chicago: University of Chicago Press, 1985.

Birch, Eugenie L. "Radburn and the American Planning Movement." *APA Journal* 46, no. 4 (1980).

_____. "Radburn and the American Planning Movement: The Persistence of an Idea." *Introduction to Planning History in the United States*, ed. Donald A. Krueckeberg. New Brunswick: Center for Urban Policy Research, Rutgers University, 1983.

Christensen, Carol A. *The American Garden City and the New Towns Movement*. Ann Arbor, Michigan: University of Michigan Research Press, 1986.

Creese, Walter L. *The Search for Environment—The Garden City Before and After*. New Haven and London: Yale University Press, 1966. Rev. ed., Baltimore: Johns Hopkins University Press, 1992.

Culbertson, Kurt. "George Edward Kessler: Landscape Architect of the American Renaissance." In *Midwestern Landscape Architecture*, ed. William H. Tishler. Urbana and Chicago: University of Illinois Press, 2000.

Cullingworth, Barry. *Planning in the USA: Policies, Issues, and Processes*. London and New York: Routledge, 1997.

Eichler, Ned. *The Merchant Builders*. Cambridge: MIT Press, 1982.

Fein, Albert. *Frederick Law Olmsted and the American Environmental Tradition*. New York: George Braziller, 1972.

Fishman, Robert. "Urbanity and Suburbanity: Rethinking the 'Burbs.'" *American Quarterly* 46, no. 1 (March 1994): 35-39.

_____. "The Postwar American Suburb: A New Form, A New City." In *Two Centuries of American Planning*, ed. Daniel Schaffer. Baltimore: Johns Hopkins University Press, 1988.

_____. *Urban Utopias in the Twentieth Century: Ebenezer Howard, Frank Lloyd Wright, and Le Corbusier*. New York: Basic Books, 1977.

Ford, Larry R. *Cities and Buildings: Skyscrapers, Skid Rows and Suburbs*. Baltimore: Johns Hopkins University Press, 1994.

Garner, John S. *The Model Company Town—Urban Design through Private Enterprise in Nineteenth-Century New England*. Amherst: University of Massachusetts Press, 1984.

Garvin, Alexander. *The American City: What Works, What Doesn't*. New York: McGraw-Hill, 1996.

Gillette, Howard, Jr. "The Evolution of Neighborhood Planning from the Progressive Era to the 1949 Housing Act." *Journal of Urban History* 9, no. 4 (August 1983): 421-44.

Girling, Cynthia, and Kenneth I. Helphand. *Yard—Street—Park: The Design of Suburban Open Space*. New York: John Wiley & Sons, 1994.

Goldfield, David R. and Blaine A. Brownell. *Urban America: A History*. 2d ed. Boston: Houghton Mifflin, 1990.

Harris, Richard, and Peter J. Larkham, eds. *Changing Suburbs: Foundation, Form and Function*. London: E & FN Spon, 1999.

Hayden, Dolores. "Model Houses for the Millions: The Making of the American Suburban Landscape, 1820-2000." Lincoln Institute of Land Policy Working Paper, WPOODH2, 2000 (available on Lincoln Institute website; book by the same title forthcoming).

Henderson, Susan. "Llewellyn Park, suburban idyll." *Journal of Garden History* 7, no. 3 (1987): 221-43.

Hise, Greg. "The Airplane and the Garden City: Regional Transformations during World War II." In *World War II and the American Dream: How Wartime Building Changed a Nation*, ed. Donald Albrecht. Cambridge: MIT Press and National Building Museum, 1995.

_____. *Magnetic Los Angeles: Planning the Twentieth Century Metropolis*. Baltimore: Johns Hopkins University Press, 1997.

Keating, Anne D. *Building Chicago: Suburban Developers and the Creation of a Divided Metropolis*. Columbus: Ohio State University Press, 1988.

Kelly, Barbara. *Expanding the American Dream: Building and Rebuilding Levittown*. Albany: State University of New York Press, 1993.

Klaus, Susan L. *A Modern Arcadia: Frederick Law Olmsted Jr. and the Plan for Forest Hills Gardens*. Amherst: University of Massachusetts Press with the Library of American Landscape History, 2001.

Kostof, Spiro. *City Shaped: Urban Patterns and Meanings Through History*. Boston: Little, Brown, 1991.

Krueckeberg, Donald, ed. *Introduction to Planning History in the United States*. Brunswick, N.J.: Rutgers University Center for Urban Policy Research, 1983.

Langdon, Philip. *A Better Place to Live: Reshaping the American Suburbs*. Amherst: University of Massachusetts Press, 1994.

Levee, Arleyn. "The Olmsted Brothers' Residential Communities: A Preview of a Career Legacy." In *The Landscape Universe: Historic Designed Landscapes in Context*, ed. Birnbaum, 29-48.

Loeb, Carolyn S. *Entrepreneurial Vernacular: Developers' Subdivisions in the 1920s*. Baltimore: Johns Hopkins University Press, 2001.

Lovelace, Eldridge. *Harland Bartholomew: His Contributions to American Urban Planning*. Urbana: University of Illinois, 1993.

McKenzie, Evan. *Privatopia: Homeowner Associations and the Rise of Residential Private Government*. New Haven: Yale University Press, 1996.

Mohl, Raymond A., ed. *Making of Urban America*, Wilmington, Del.: SR Books, 1988. 2d ed. 1997.

Newton, Norman, T. *Design on the Land: The Development of Landscape Architecture*. Cambridge: The Belknap Press of Harvard University Press, 1971.

Palen, J. John. *The Suburbs*. New York: McGraw-Hill, 1995.

Parsons, Kermit C. "Collaborative Genius: The Regional Planning Association of America," *Journal of the American Planning Association* 60, no. 4 (Autumn, 1994): 462-82.

Peterson, Jon A. "The City Beautiful Movement: Forgotten Origins and Lost Meanings," *Journal of Urban History* 2 (August 1976): 415-34.

_____. *City Planning in the United States, 1840-1917: Birth of a Comprehensive Vision*. Baltimore: Johns Hopkins University Press, forthcoming.

Rolph, Edward. *The Modern Urban Landscape*. Baltimore: Johns Hopkins University Press, 1987.

Reps, John. *Making of Urban America: A History of City Planning in the United States*. Princeton: Princeton University Press, 1965.

Rogers, Millard F. *John Nolen and Mariemont: Building a New Town in Ohio*. Baltimore: Johns Hopkins University Press, 2001.

Roper, Laura Wood. *F.L.O.: A Biography of Frederick Law Olmsted*. Baltimore: Johns Hopkins University Press, 1973.

Roth, Darlene. *Frederick Law Olmsted's First and Last Suburbs: Riverside and Druid Hills*. Bethesda, Maryland: National Association of Olmsted Parks, 1993.

Rowe, Peter G. *Making a Middle Landscape*. Cambridge: The MIT Press, 1991.

Schaffer, Daniel. *Garden Cities for America: The Radburn Experience*. Philadelphia: Temple University Press, 1982.

_____, ed. *Two Centuries of American Planning*. Baltimore: Johns Hopkins University Press, 1988.

Schuyler, David. *The New Urban Landscape: Redefinition of Urban Form in Nineteenth-Century America*. Baltimore: Johns Hopkins University Press, 1986.

Schuyler, David, and Kermit Carlyle Parsons, eds. *From Garden Cities to Green Cities: The Legacy of Ebenezer Howard*. Baltimore: Johns Hopkins University Press, in press.

Scott, Mel. *American City Planning Since 1890*. Berkeley: University of California Press, 1971.

Sies, Mary Corbin. "The City Transformed." *Journal of Urban History* 14, no. 1 (November 1987): 81-111.

_____. "Paradise Retained: An Analysis of Persistence in Planned, Exclusive Suburbs, 1880-1980." *Planning Perspectives* 12 (1997): 165-91.

Southworth, Michael, and Eran Ben-Joseph. *Streets and the Shaping of Towns and Cities*. New York: McGraw-Hill, 1997.

Spann, Edward K. *Designing Modern America: The Regional Planning Association of America and its Members*. Columbus: Ohio State University Press, 1996.

Stein, Clarence S. *Toward New Towns for America*. Cambridge: MIT Press, 1963.

Stern, Robert A. M., ed. *The Anglo-American Suburb*. New York: St. Martin's, 1981. Special issue, *Architectural Digest* 51 (Oct./Nov. 1981).

Sussman, Carl. *Planning the Fourth Migration: The Neglected Vision of the Regional Planning Association of America*. Cambridge: MIT Press, 1976.

Vance, James E. *Geography and the Urban Evolution in the San Francisco Bay*. Berkeley: Institute of Governmental Studies, University of California, 1964.

Warner, Sam Bass, Jr. *Streetcar Suburbs: The Process of Growth in Boston (1870-1900)*. 2d ed. Cambridge: Harvard University Press, 1962.

Weiss, Ellen. "Robert Morris Copeland's Plans for Oak Bluffs." *Journal of Society of Architectural Historians* 34, no. 1 (March 1975): 60-6.

Weiss, Marc A. *The Rise of the Community Builders: The American Real Estate Industry and Urban Land Planning*. New York: Columbia University Press, 1987.

Weitz, Karen J. "Utopian Place Making—The Built Environment in Arts and Crafts California." In *The Arts and Crafts Movement in California: Living the Good Life*, ed. Kenneth R. Trapp. Oakland, California: Oakland Museum, and New York: Abbeville Press, 1993, 89-108.

Worley, William S. J. C. *Nichols and the Shaping of Kansas City*. Columbia: University of Missouri Press, 1990.

Regional Histories and Case Studies

Alanen, Arnold R., and Joseph A. Eden. *Main Street Ready-Made: The New Deal Community of Greendale, Wisconsin*. Madison: State Historical Society of Wisconsin, 1987.

Arnold, Joseph L. *The New Deal in the Suburbs: A History of the Greenbelt Town Program, 1935-1954*. Columbus: Ohio State University Press, 1971.

Behar, Robert M., and Maurice G. Culot. *Coral Gables: An American Garden City*. Paris: Editions Norma, 1997.

Bishir, Catherine W. and Lawrence S. Earley, eds. *Early Twentieth-Century Suburbs in North Carolina*. Raleigh: North Carolina Department of Cultural Resources, 1985.

Buder, Stanley. *Pullman: An Experiment in Industrial Order and Community Planning, 1880-1930*. New York: Oxford University Press, 1967.

Candee, Richard. *Atlantic Heights: A World War I Shipbuilder's Community*. Portsmouth, New Hampshire: P.E. Randall, 1985.

Candee, Richard M., and Greer Hardwicke. "Early Twentieth-Century Reform Housing by Kilham and Hopkins, Architects of Boston." *Winterthur Portfolio* 22, no. 1 (Spring 1987): 47-80.

Chase, Susan Mulchahey, David L. Ames, and Rebecca Siders. *Suburbanization in the Vicinity of Wilmington, Delaware, 1880-1950 +/-: A Historic Context*. Newark, Delaware: Center for Historic Architecture and Engineering, University of Delaware, 1993.

Civic Association of Hollin Hills. *Hollin Hills: Community of Vision: A Semicentennial History, 1949-1999*. Alexandria, Virginia: author, 2000.

Contosta, David R. *Lancaster, Ohio, 1800-2000: Frontier Town to Edge City*. Columbus: Ohio State University Press, 1999.

_____. *Suburb in the City: Chestnut Hill, Philadelphia, 1850-1990*. Columbus: Ohio State University Press, 1992.

Davies, Jane B. "Llewellyn Park in West Orange, New Jersey." *Antiques* 107: 1 (Jan. 1975): 142-58.

Ebner, Michael H. *Creating Chicago's North Shore: A Suburban History*. Chicago: University of Chicago Press, 1988.

Edel, Matthew, and Elliot D. Sclar and Daniel Luria. *Shaky Palaces: Homeownership and Social Mobility in Boston's Suburbanization*. New York: Columbia University Press, 1984.

Folpe, Emily. *Short History of Washington Square*. Baltimore: Johns Hopkins University Press, forthcoming.

Hanchett, Thomas W. *Sorting Out the New South City: Race, Class, and Urban Development in Charlotte, 1875-1975*. Chapel Hill: University of North Carolina Press, 1998.

Hise, Greg. "Home-Building and Industrial Decentralization in Los Angeles: The Roots of the Postwar Urban Region." *Journal of Urban History* 19, no. 2 (February, 1993): 95-125.

Hoffman, Steven J. "A Plan of Quality: The Development of Mt. Lebanon, a 1920's Automobile Suburb." *Journal of Urban History* 18, no. 2 (1992): 141-81.

Hovinen, Gary R. "Suburbanization in Greater Philadelphia 1880-1941." *Journal of Historical Geography* 11, no. 2 (April 1985): 174-95.

Johnson, Marilyn S. *The Second Gold Rush: Oakland and the East Bay in World War II*. Berkeley: University of California Press, 1993.

Knepper, Cathy D. *Greenbelt, Maryland: A Living Legacy of the New Deal*. Baltimore: Johns Hopkins University Press, 2001.

Krim, Arthur. "Los Angeles and the Anti-Tradition of the Suburban City." *Journal of Historical Geography* 18, January 1992: 121-38.

Lamp, Elizabeth Jo, and Kimberly Othro Williams. *Chevy Chase: A Home Suburb for the Nation's Capital*. Annapolis: Maryland Historical Trust Press, 1998.

Lancaster, Clay. *Brooklyn Heights: New York's First Suburb*. New York: Dover Publications, 1980.

Little, M. Ruth. "The Other Side of the Tracks: The Middle-Class Neighborhoods That Jim Crow Built in Early Twentieth Century North Carolina." In *Perspectives VII: Exploring Everyday Landscapes*, ed. Adams and McMurry. Knoxville: University of Tennessee Press, 1997, 268-80.

MacColl, E. Kimbark. *The Shaping of a City: Business and Politics in Portland, Oregon 1885 to 1915*. Portland, Oregon: Georgian Press, 1976.

Marsh, Margaret Sammartino. "Suburbanization and the Search for Community: Residential Decentralization in Philadelphia, 1880-1900." *Pennsylvania History* 44 (April 1977): 99-116.

Martin, Judith, and David Lanegran. *The Residential Districts of Minneapolis and Saint Paul*. Minneapolis: University of Minnesota Press, 1983.

Mattingly, Paul H. *Suburban Landscapes: Culture and Politics in a New York Metropolitan Community*. Baltimore, Johns Hopkins University Press, 2001.

Miller, Roger, and Joseph Siry. "The Emerging Suburb: West Philadelphia, 1850-1880." *Pennsylvania History* 47, April 1980, 99-145.

Miller, Zane L. *Suburb, Neighborhood and Community in Park Forest, Ohio, 1935-1976*. Knoxville: University of Tennessee Press, 1981.

Prosser, Daniel. "Chicago and the Bungalow Boom of the late 1920s." *Chicago History* 10, Summer 1981, 86-95.

Randall, Gregory C. *America's Original GI Town: Park Forest, Illinois*. Baltimore: Johns Hopkins University Press, 2000

Schwartz, Joel and Prosser, Daniel, eds. *Cities in the Garden State: Essays in the Urban and Suburban History of New Jersey*. Dubuque, Iowa: Kendall Hunt Publishing Co., 1977.

Sehr, Timothy. "Three Gilded Age Suburbs of Indianapolis: Irvington, Brightwood, and Woodruff Place." *Indiana Magazine of History* 77, no. 4 (1981).

Simmons-Henry, Linda, and Linda Harris Edmisten. *Culture Town: Life in Raleigh's African American Communities*. Raleigh, North Carolina: Raleigh Historic Districts Commission, 1993.

Starr, S. Frederick. *Southern Comfort: The Garden District of New Orleans*. Rev. ed., Princeton: Princeton Architectural Press, 1999.

Warner, Sam Bass, Jr. *The Private City: Philadelphia in Three Periods of Its Growth*. Philadelphia: University of Pennsylvania Press, 1968.

White, Dana F., and Victor A. Kramer, eds. *Olmsted South: Old South Critic—New South Planner*. Westport, Conn.: Greenwood Press, 1979.

Wiese, Andrew. "Places of Our Own: Suburban Black Towns before 1960." *Journal of Urban History* 19, 3 (1992), 47-51.

Wilson, Richard Guy. "Idealism and the Origin of the First American Suburb: Llewellyn Park, New Jersey." *The American Art Journal*, 11:4 (Oct. 1979): 79-90.

Wilson, William H. *The City Beautiful Movement in Kansas City*. Columbia: University of Missouri Press, 1964.

—. *Hamilton Park—A Planned Black Community in Dallas*. Baltimore: Johns Hopkins University Press, 1998.

Wray, Diane. *Arapahoe Acres: An Architectural History, 1949-1957*. Englewood, Colorado: Wraycroft Press, 1997.

Zunz, Oliver. *The Changing Face of Inequality: Urbanization, Industrial Development, and Immigrants in Detroit, 1880-1920*. Chicago: University of Chicago Press, 1982.

Transportation, Utilities, and Public Parks

Bachrach, Julia Sniderman. *City in a Garden: A Photographic History of Chicago's Parks*. Harrisonburg, Virginia: Center for American Places, 2001.

Baldassare, Mark. *Trouble in Paradise: The Suburban Transformation in America*. New York: Columbia University Press, 1986.

Bottles, Scott L. *Los Angeles and the Automobile: The Making of the Modern City*. Berkeley: University of California, 1987.

Cigliano, Jan, and Sarah Bradford Landau, eds. *The Grand American Avenue, 1850-1920*. San Francisco: Pomegranate Artbooks, 1994.

Davis, Timothy. "Rock Creek and Potomac Parkway, Washington, D.C.: The Evolution of a Contested Urban Landscape." *Studies in the History of Gardens and Designed Landscapes: An International Quarterly* 19, no. 2 (April-June 1999).

Finch, Christopher. *Highways to Heaven: The Autobiography of America*. New York: Harper Collins, 1992.

Flink, James J. *America Adopts the Automobile, 1895-1910*. Cambridge: MIT Press, 1970.

—. *The Automobile Age*. Cambridge: MIT Press, 1988.

—. *The Car Culture*. Cambridge: MIT Press, 1975.

Foster, Mark S. *From Streetcar to Superhighway: American City Planners and Urban Transportation, 1900-1940*. Philadelphia: Temple University Press, 1981.

Hugill, Peter J. "Good Roads and the Automobile in the United States 1880-1929." *Geographical Review* 72, no. 3 (July 1982): 332-49.

Jakle, John A., and Keith A. Sculle. *The Gas Station in America*. Baltimore: Johns Hopkins University Press, 1994.

Kowsky, Francis R. "Municipal Parks and City Planning: Frederick Law Olmsted's Buffalo Park and Parkway System." *Journal of the Society of Architectural Historians* 46 (March 1987): 49-64.

Leach, Sara Amy. "Fifty Years of Parkway Construction In and Around the Nation's Capital." In *Roadside America: The Automobile in Design and Culture*, ed. Jan Jennings. Ames, Iowa: Iowa State University Press and the Society for Commercial Archeology, 1990.

Lewis, Tom. *Divided Highways: Building the Interstate Highways, Transforming American Life*. New York: Viking Penguin, 1997. Reprint, New York: Penguin Books, 1999.

Martin, Albro. *Railroads Triumphant: The Growth, Rejection and Rebirth of a Vital American Force*. New York: Oxford University Press, 1992.

McShane, Clay, and Joel A. Tarr. "The Centrality of the Horse in the Nineteenth Century City." In *The Making of Urban America*. 2d ed., ed. Mohl.

McShane, Clay. *Down the Asphalt Path: The Automobile and the American City*. New York: Columbia University Press, 1995.

McShane, Clay, and Stanley K. Schultz. "To Engineer the Metropolis: Sewers, Sanitation, and City Planning in Late 19th Century America." *Journal of American History* 65 (September 1978): 389-411. Also in *The Making of Urban America*, ed. Mohl.

Melosi, Martin V. *Garbage in the Cities: Refuse, Reform, and the Environment, 1880-1890*. Environmental Series, no. 4. College Station: Texas A&M Press, 1981.

—. *The Sanitary City: Urban Infrastructure in America from Colonial Times to the Present*. Baltimore: Johns Hopkins University Press, 2000.

Nye, David E. *Electrifying America: Social Meanings of a New Technology, 1880-1940*. Cambridge, Mass: MIT Press, 1990.

Ogle, Maureen. "Water Supply, Waste Disposal, and the Culture of Privatism in the Mid-Nineteenth Century." In *Technology and the City*, ed. Mark H. Rose and Joel A. Tarr. Special Issue. *Journal of Urban History* 25, no. 3 (March 1999).

Peterson, Jon A. "The Impact of Sanitary Reform upon American Urban Planning, 1840-1890." *Journal of Social History* 13 (September 1979): 83-103.

Radde, Bruce. *The Merritt Parkway*. New Haven: Yale University Press, 1993.

Rae, John B. *The Road and the Car in American Life*. Cambridge: MIT Press, 1971.

—. *The American Automobile: A Brief History*. Chicago: University of Chicago Press, 1965.

Rhoads, William. "Roadside Colonial: Early American Design for the Automobile Age, 1900-1940." *Winterthur Portfolio* 21 (Summer-Autumn 1986): 133-52.

Rose, Mark H. *Cities of Light and Heat: Domesticating Gas and Electricity in Urban America*. University Park: Pennsylvania State University Press, 1995.

—. *Interstate, Express Highway Politics, 1939-1989*. Rev. ed. Knoxville: University of Tennessee Press, 1990.

Rose, Mark H., and Joel A. Tarr, eds. *Technology and the City*. Special Issue. *Journal of Urban History* 25, no. 3 (March 1999).

Seely, Bruce E. *Building the American Highway System: Engineers as Policy Makers*. Philadelphia: Temple University Press, 1987.

Stilgoe, John R. *Metropolitan Corridor: Railroads and the American Scene*. New Haven: Yale University Press, 1983.

Tarr, Joel A. *The Search for the Ultimate Sink: Urban Pollution in Historical Perspective*. Akron, Ohio: University of Akron Press, 1996.

—. "From City to Suburb: The Moral Influence of Transportation Technology." In *American Urban History*, ed. Alexander B. Callow, Jr. New York: Oxford University Press, 1973, 202-12.

Tarr, Joel A., and Josef W. Konvitz. "Patterns in the Development of Urban Infrastructure." *American Urbanism: A Historiographical Review*, ed. Howard Gillette Jr. and Zane L. Miller. Westport, Conn.: Greenwood Press, 1987.

Tunnard, Christopher, and Boris Pushkarev. *Man-Made America: Chaos or Control: An Inquiry into Selected Problems of Design in the Urbanized Landscape*. New Haven and London: Yale University Press, 1966.

Wachs, Martin, and Margaret Crawford. *The Car and the City: The Automobile, the Built Environment, Daily Urban Life*. Ann Arbor: University of Michigan Press, 1996.

Wilson, William H. *The City Beautiful Movement*. Baltimore: Johns Hopkins University, 1994.

Zaitzevsky, Cynthia. *Frederick Law Olmsted and the Boston Park System*. Cambridge, Massachusetts: Harvard University Press, 1982.

Zapatka, Christian. "The American Parkways: Origins and Evolution of the Parkway." *Lotus International* 56: 97-128.

House Design and Production

Adamson, Paul, with Marty Arbutich and Ernie Braun. *Eichler: Modernism Rebuilds the American Dream*. Layton, Utah: Gibbs Smith, 2002.

Albrecht, Donald, ed. *World War II and the American Dream*, Washington D.C.: National Building Museum, and Cambridge, Mass.: MIT Press, 1995.

Alex, William, and George B. Tatum. *Calvert Vaux: Architect and Planner*. New York: Ink, Inc., 1994.

Bacon, Mardges. *Ernest Flagg: Beaux-Arts Architect and Urban Reformer*. New York: The Architectural History Foundation and Cambridge, Mass.: MIT Press, 1986.

Berke, Deborah, and Steven Harris, eds. *Architecture of the Everyday*. Princeton: Princeton Architectural Press, 1997.

Bricker, David. "Cliff May," in *Toward a Simpler Life*, ed. Robert Winter. Berkeley: University of California Press, 1997, 283-90.

—. "Ranch Houses Are Not All the Same." In *Preserving the Recent Past* 2, ed. Slaton and Foulks.

Brooks, H. Allen, Jr. *The Prairie School: Frank Lloyd Wright and His Midwest Contemporaries*. New York: W.W. Norton, 1972 and 1976 (paperback), reissued 1996.

—. "The Early Work of the Prairie Architects," *Journal of Society of Architectural Historians* 19, no. 1 (March 1960): 2-10.

Bruce, Alfred, and Harold Sandbank. *A History of Prefabrication*. 1943. Reprint, New York: Arno Press, 1972.

Buckner, Cory. *A Quincy Jones*. New York: Phaidon Press, 2002.

Burns, John A. "Technology, and Housing: Industrialization, Standardization, and Prefabrication, 1930-1950." In *Preserving the Recent Past*, ed. Slaton and Shiffer.

Cathers, David, and Alexander Vertikoff. *Stickley Style: Arts and Crafts Homes in the Craftsman Tradition*. New York: Simon and Schuster and Archetype Press, 1996.

Clark, Clifford Edward, Jr. *The American Family Home, 1800-1960*. Chapel Hill: The University of North Carolina Press, 1986.

—. "Domestic Architecture as an Index to Social History: The Romantic Revival and the Culture of Domesticity in America, 1840-1870." *Journal of Interdisciplinary History* 7 (1976): 33-56.

Coolidge, Harold N., Jr. *Samuel Sloan: Architect of Philadelphia, 1815-1884*. Philadelphia: University of Pennsylvania Press, 1986.

Cromley, Elizabeth Collins. *Alone Together: A History of New York's Early Apartments*. Ithaca and London: Cornell University Press, 1990.

Cromley, Elizabeth Collins, and Carter Hudgins, eds. *Perspectives in Vernacular Architecture V: Gender, Class, and Shelter*. Knoxville: University of Tennessee Press, 1995.

Davies, Jane B. "Davis and Downing: Collaborators in the Picturesque." In *Prophet with Honor*, ed. George B. Tatum and Elisabeth B. MacDougall. Washington, D.C.: Dumbarton Oaks, 1989.

Dietsch, Deborah K. *Classic Modern: Mid-Century Modern at Home*. New York: Simon and Schuster, 2000.

Ditto, Jerry, Marvin Wax, and Lanning Stern. *Design for Living: Eichler Homes*. San Francisco: Chronicle Books, 1995.

Doan, Mason C. *American Housing Production, 1880-2000*. Lanham, New Jersey: University Press of America, 1996.

Domer, Dennis. "Escaping the City: New Deal Housing and Gustave Ring's Garden Apartment Villages." In *Urban Forms, Suburban Dreams*, ed. Malcolm Quantrill and Bruce Webb. College Station: Texas A&M University Press, 1993, 65-90.

Duchscherer, Paul, and Douglas Keister. *The Bungalow: America's Arts and Crafts Home*. New York: Penguin Studio, 1995.

Duchscherer, Paul, and Douglas Keister. *Inside the Bungalow: America's Arts and Crafts Interior*. New York: Penguin Studio, 1997.

Fetters, Thomas T. *The Lustron House: The History of a Postwar Prefabricated Housing Experiment*. Jefferson, North Carolina: McFarland, 2002.

Foy, Jessica H., and Karal Ann Marling, eds. *The Arts and the American Home, 1890-1930*. Knoxville: University of Tennessee Press, 1994.

Foy, Jessica H., and Thomas J. Schlereth, eds. *American Home Life, 1880-1930: A Social History of Spaces and Services*. Knoxville: University of Tennessee Press, 1992.

Garvin, James L. "Mail Order Home Plans and American Victorian Architecture." *Winterthur Portfolio* 16, no. 4 (winter 1981): 309-34.

Gebhard, David. "The American Colonial Revival in the 1930s," *Winterthur Portfolio* 22, no. 2/3 (summer/autumn 1987): 109-48.

..... "Fifty Years of the American Home." *Landscape* 8 (autumn 1958): 5-9.

..... "Royal Barry Wills and the American Colonial Revival." *Winterthur Portfolio* 27, no. 1 (spring 1992): 45-74.

..... "The Spanish Colonial Revival in Southern California (1895-1930)." *Journal of the Society of Architectural Historians* 26, no. 2 (May 1967): 131-47.

..... "Tile, Stucco Walls and Arches: The Spanish Tradition in the Popular American House." In *Home Sweet Home*, ed. Moore, 104-11.

Goat, Leslie G. "Housing the Horseless Carriage: America's Early Private Garages." In *Perspectives in Vernacular Architecture III*, ed. Thomas Carter and Bernard L. Herman. Columbia: University of Missouri Press, 1989.

Goode, James M. *Best Addresses: A Century of Washington's Distinguished Apartment Houses*. Washington, D.C.: Smithsonian Institution Press, 1988.

Gowans, Alan. *The Comfortable House: North American Suburban Architecture, 1890-1930*. Cambridge: MIT Press, 1986.

Gregory, Daniel P. "Just Add Water: The Productive Partnership between Thomas Church and *Sunset Magazine*." In *Studies in the History of Gardens and the Designed Landscape* 20, no. 2 (April-June 2000): 120-9.

..... "William W. Wurster," in *Toward a Simpler Life*, ed. Winter, 245-54.

..... "Visions and Subdivisions: *Sunset Magazine* and the California Ranch House." *Architecture California* 13, no. 1 (February 1991): 32-35.

Gutman, Robert. "Architects in the Home Building Industry." In *Professionals and Urban Form*, ed. Judith R. Blau, Mark LaGory, and John S. Pipkin. Albany, New York: State University of New York Press, 1983, 208-23.

..... *The Design of American Housing: A Reappraisal of the Architect's Role*. New York: Publishing Center for Cultural Resources, 1985.

Handlin, David. *The American Home: Architecture and Society, 1815-1915*. Boston: Little, Brown, and Co., 1979.

Hardwick, M. Jeff. "Homesteads and Bungalows: African-American Architecture in Langston, Oklahoma." In *Perspectives in Vernacular Architecture VI: Shaping Communities*, ed. Hudgins and Collins, 21-32.

Harvey, Thomas. "Mail-Order Architecture in the Twenties." *Landscape* 25, no. 3 (1981): 1-9

Hawkins, William John, and William F. Willingham. *Classic Houses of Portland, Oregon: 1850-1950*. Portland, Oregon: Timber Press, 1999.

Hayden, Dolores. "Model Houses for the Millions: Architects' Dreams, Builders' Boasts, Residents' Dilemmas." In *Blueprints for Modern Living*, ed. Elizabeth A. T. Smith. Cambridge: MIT Press, 1989, 196-211.

Hayward, Mary Ellen, and Charles Belfoure. *The Baltimore Rowhouse*. Princeton: Princeton Architectural Press, 1999.

Hayward, Mary Ellen. "Urban Vernacular Architecture in Nineteenth-Century Baltimore." *Winterthur Portfolio* 16, no. 1 (spring 1981): 33-63.

Herbert, Gilbert. *The Dream of the Factory-Made House: Walter Gropius and Konrad Wachsmann*. Cambridge: MIT Press, 1984.

Hersey, George L. "Godey's Choice." *Journal of Society of Architectural Historians* 18, no. 3 (October 1959): 104-11.

Hess, Alan. *Rancho Deluxe: Rustic Dreams and Real Western Living*. San Francisco: Chronicle, 2000.

Hession, Jane King. "Ralph Rapson, Modernist." In *Preserving the Recent Past* 2, ed. Slaton and Foulks.

Hession, Jane King, Rip Rapson, and Bruce N. Wright. *Ralph Rapson: Sixty Years of Modern Design*. Afton, Minn.: Afton Historical Society Press, 1999.

Hille, R. Thomas, ed. *Inside the Large Small House: The Residential Design Legacy of William W. Wurster*. New York: Princeton Architectural Press, 1994.

Hine, Thomas. "The Search for the Postwar House." In *Blueprints for Modern Living*, ed. Smith, 166-81.

Hines, Thomas S. "Case Study Trouvé: Sources and Precedents, Southern California, 1920-1942." In *Blueprints for Modern Living*, ed. Smith, 83-106.

..... *Richard Neutra and the Search for Modern Architecture: A Biography and a History*. New York: Oxford University Press, 1982.

..... *Historic Homes of Phoenix: An Architectural and Preservation Guide*. Phoenix: City of Phoenix, 1992.

Hudson, Karen E. *Paul R. Williams, Architect: A Legacy of Style*. New York: Rizzoli, 2000.

Hunter, Christine. *Ranches, Rowhouses, and Railroad Flats-- American Homes: How They Shape Our Landscape and Neighborhoods*. New York: W.W.Norton, 1999.

Hutchison, Janet. "The Cure for Domestic Neglect: Better Homes in America, 1922-1935." In *Perspectives in Vernacular Architecture II*, ed. Camille Wells. Columbia, Missouri: University of Missouri Press, 1986, 168-78.

Ierley, Merritt. *The Comforts of Home: The American Home and the Evolution of Modern Convenience*. New York: Clarkson Potter, 1999.

Jackson, J. B. "The Domestication of the Garage." In *The Necessity for Ruins and Other Topics*. Amherst: University of Massachusetts Press, 1980. also published in *Landscape* 20, no. 2 (winter 1976): 10-17.

Jakle, John. "Twentieth-Century Revival Architecture and the Gentry." *Journal of Cultural Geography* 1 (1983): 28-45.

Jakle, John, Robert Bastian, and Douglas Meyer. *Common Houses in America's Small Towns*. Athens: University of Georgia Press, 1989.

Jandl, H. Ward, with John A. Burns and Michael J. Auer. *Yesterday's Houses of Tomorrow: Innovative American Homes, 1850 to 1950*. Washington, D.C.: Preservation Press, 1991.

Jeffers, Grace. "Ralph, Sr., and Sunny Wilson House History: Moments in Time." In *Preserving the Recent Past 2*, ed. Slaton and Foulks.

Jennings, Jan. "Cheap and Tasteful Dwellings in Popular Architecture." In *Perspectives in Vernacular Architecture V, Gender, Class and Shelter*, ed. Elizabeth Collins Cromley and Carter L. Hudgins. Knoxville: University of Tennessee Press, 1995.

_____. "Housing the Automobile" In *Roadside America: The Automobile in Design and Culture*, ed. Jan Jennings. Ames, Iowa: Iowa State University Press and the Society for Commercial Archeology, 1990, 95-106.

Jones, Amelia, and Elizabeth A. T. Smith. "The Thirty-Six Case Study Projects." In *Blueprints for Modern Living*, ed. Smith, 41-81.

Kamerling, Bruce. *Irving J. Gill, Architect*. San Diego: San Diego Historical Society, 1993.

Kaplan, Wendy, ed. *The Art That is Life: The Arts and Crafts Movement in America, 1875-1920*. Boston: Museum of Fine Arts, 1987.

Kelly, Burnham. *The Prefabrication of Houses*. Cambridge: MIT Press, 1961.

Kihlstedt, Folke T. "The Automobile and the Transformation of the American House, 1910-1935." *Michigan Quarterly Review* (fall 1980/winter 1981): 555-70.

King, Anthony. *The Bungalow—The Production of a Global Culture*. London: Routledge & Keegan Paul, 1984.

Kowsky, Francis R. *Country, Park, and City: The Architecture and Life of Calvert Vaux*. New York: Oxford University Press, 1998.

Lancaster, Clay. *The American Bungalow, 1880s-1920s*. New York: Abbeville Press, 1985.

Langdon, Philip. *American Houses*. New York: Stewart, Tabori & Chang, 1987.

Lewis, Pierce. "Common Houses, Cultural Spoor." *Landscape* 12 (1971): 1-22.

Lupton, Ellen, and J. Abbott Miller. *The Bathroom, the Kitchen, and the Aesthetics of Waste*. Princeton: Princeton Architectural Press, 1992.

Longstreth, Richard. *On the Edge of the World: Four Architects in San Francisco at the Turn of the Century*. Cambridge: MIT Press, 1983.

Makinson, Randall L. *Greene and Greene: Architecture as a Fine Art*. Salt Lake City: Peregrine Smith, 1977.

Mason, Joseph B. *History of Housing in the U.S., 1930-1980*. Houston, Texas: Gulf Publishing Company, 1982.

McCoy, Esther. "Arts & Architecture Case Study Houses." In *Blueprints for Modern Living*, ed. Smith, 15-39.

_____. *Case Study Houses, 1945-1962*. 1962. Reprint of *Modern California Houses*, with a new introduction, Santa Monica, Calif.: Hennessey & Ingalls, 1977.

McCoy, Esther and Evelyn Hitchcock. "The Ranch House." In *Home Sweet Home*, ed. Charles W. Moore et al. New York: Rizzoli, 1983, 84-89.

Mitchell, Robert A. "What Ever Happened to Lustron Homes?" *APT Bulletin* 23, no. 2 (1991): 6.

Moore, Charles, Gerald Allen and Donlyn Lyndon. *The Place of Houses*. New York: Holt, Rinehart, and Winston, 1974.

Moore, Charles W., Kathryn Smith, and Peter Becker, eds. *Home Sweet Home: American Domestic Vernacular Architecture*. New York: Rizzoli, 1983.

Ore, Janet. "Jud Yoho, 'the Bungalow Craftsman,' and the Development of Seattle Suburbs." In *Perspectives in Vernacular Architecture VI: Shaping Communities*, ed. Hudgins and Collins.

Peck, Amelia, ed. *Alexander Jackson Davis: American Architect, 1803-1892*. New York: Metropolitan Museum of Art and Rizzoli Books, 1992.

Peterson, Gary G. "Home Off the Range: The Origins and Evolution of Ranch Style Architecture in the United States." *Design Methods and Theories* 23, no. 3 (1989): 1040-59.

Plante, Ellen M. *The American Kitchen 1700 to the Present: From Hearth to Highrise*. New York: Facts on File, 1995.

Polyzoides, Stefanos, and others. *Courtyard Housing in Los Angeles*. Princeton: Princeton Architectural Press, 1992.

Pommer, Richard. "The Architecture of Urban Housing in the United States during the Early 1930s." *Journal of Society of Architectural Historians* 37 (December 1978): 235-64.

Robertson, Cheryl. "Male and Female Agendas for Domestic Reform: The Middle-Class Bungalow in Gendered Perspective." *Winterthur Portfolio* 26, no. 2/3 (summer/autumn 1991): 123-41.

_____. "House and Home in the Arts and Crafts Era: Reforms for Simpler Living." In *The Art That is Life*, ed. Kaplan, 330-57.

_____. "The Resort to the Rustic: Simple Living and the California Bungalow." In *The Arts and Crafts Movement in California*, ed. Trapp, 89-107.

Rosenbaum, Alvin. *Usonia: Frank Lloyd Wright's Design for America*. Washington, D.C.: Preservation Press, 1993.

Roth, Leland M. "Getting the Houses to the People—Edward Bok, the *Ladies' Home Journal*, and the Ideal House." *Perspectives in Vernacular Architecture IV*, ed. Bernard L. Herman and Thomas Carter. Columbia: University of Missouri Press, 1991, 187-96.

Roth, Leland M., and Bret Morgan. *Shingle Styles: Innovation and Tradition in American Architecture, 1874 to 1982*. New York: Harry N. Abrams, 1999.

Rowe, Peter G. *Modernity and Housing*. Cambridge, Massachusetts, and London: MIT Press, 1993.

Rowe, Peter G., and John Michael Desmond. *The Shape and Appearance of the Modern American Single-Family House*. Cambridge, Massachusetts: Joint Center for Housing Studies of MIT and Harvard University, 1986.

Rubano, Anthony. "The Grille Is Gone: The Rise and Fall of Screen Block." In *Preserving the Recent Past 2*, ed. Slaton and Foulks.

Scully, Vincent J., Jr. *The Shingle Style and the Stick Style: Architectural Theory and Design from Downing to the Origins of Wright*. New Haven: Yale University Press, 1955, reprinted 1977 and 1983.

Searing, Helen. "Case Study Houses: In the Grand Modern Tradition." In *Blueprints for Modern Living*, ed. Smith, 107-29.

Sergeant, John. *Frank Lloyd Wright's Usonian Houses: Designs for Moderate Cost One-Family Houses*. New York: Whitney Library of Design, 1984.

Sies, Mary Corbin. "'God's Very Kingdom on the Earth': The Design Program for the American Suburban Home, 1877-1917." In *Modern Architecture in America: Visions and Revisions*, ed. Richard Guy Wilson and Sidney K. Robinson. Ames: Iowa State University Press, 1991, 2-31.

Smeins, Linda E. *Building an American Identity: Pattern Book Homes and Communities, 1870-1900*. Walnut Creek, California: Alta Mira Press, 1999.

Smith, Elizabeth A.T. "Arts & Architecture and the Los Angeles Vanguard." In *Blueprints for Modern Living*, ed. Smith, 145-65.

_____. ed. *Blueprints for Modern Living: History and Legacy of the Case Study Houses*. Cambridge: MIT Press, 1989.

Sprague, Paul E. "The Origin of Balloon Framing." *Journal of Society of Architectural Historians* 40, no. 4 (December 1981): 311-19.

Starr, Kevin. "The Case Study House Program and the Impending Future: Some Regional Considerations." In *Blueprints for Modern Living*, ed. Smith, 131-43.

Stevens, John Calvin, II, and Earle G. Shettleworth, Jr. *John Calvin Stevens: Domestic Architecture, 1890-1930*. Scarborough, Maine: Harp Publications, 1990.

Stevenson, Katherine Cole, and H. Ward Jandl. *Houses by Mail: A Guide to Houses from Sears, Roebuck and Company*. New York: National Trust for Historic Preservation and John Wiley and Sons, 1986.

Sweeting, Adam W. *Reading Houses and Building Books: Andrew Jackson Downing and the Architecture of Popular Antebellum Literature, 1835-1855*. Hanover, New Hampshire: University Press of New England, 1996.

Schweitzer, Robert, and Michael W.R. Davis. *America's Favorite Homes: Mail-Order Catalogues as a Guide to Popular Early 20th-Century Houses*. Detroit: Wayne State University Press, 1990.

Storrer, William Allin. *The Architecture of Frank Lloyd Wright*. 12th printing. Cambridge: MIT Press, 1995.

Szylvian, Kristin M. "Industrial Housing Reform and the Emergency Fleet Corporation." *Journal of Urban History* 25, no. 5 (July 1999): 647-89.

Tomlan, Michael A. "The Palliser Brothers and Their Publications." In *The Palliser's Late Victorian*. Watkins Glen, N.Y.: American Life Foundation, 1978, i-iv.

Trapp, Kenneth R., ed. *The Arts and Crafts Movement in California: Living the Good Life*. Oakland, California: Oakland Museum, and New York: Abbeville Press, 1993.

Treib, Marc, ed. *Everyday Modernism: The Houses of William Wurster*. Berkeley: San Francisco Museum of Art and University of California Press, 1995.

Vlach, John Michael. "The Shotgun House: An African-American Legacy." *Pioneer America* 8 (1976): 47-70.

Webb, Michael. *Modernism Reborn: Mid-Century American Houses*. New York: Universe Publishing, 2001.

Weitz, Karen J. *California's Mission Revival*. Los Angeles: Hennessey & Ingalls, 1984.

West, Patricia. "The Rise and Fall of the American Porch." *Landscape* 20 (1976): 42-47.

Wilson, Richard Guy. "American Arts and Crafts Architecture: Radical though Dedicated to the Cause Conservative." In *The Art That is Life*, ed. Kaplan, 101-31.

_____. "'Divine Excellence': The Arts and Crafts Life in California." In *The Arts and Crafts Movement in California*, ed. Trapp, 13-34.

_____. "The Arts and Crafts after 1918: Ending and Legacy." In *The Arts and Crafts Movement in California*, ed. Trapp, 233-46.

Wilson, Richard Guy, and Sidney K. Robinson, eds. *Modern Architecture in America: Visions and Revisions*. Ames: Iowa State University Press, 1991.

Winter, Robert, and Alexander Vertikoff. *American Bungalow Style*. New York: Simon and Schuster, 1996.

Winter, Robert. *The California Bungalow*. Los Angeles: Hennessey & Ingalls, 1980.

_____, ed. *Toward a Simpler Life: Arts and Crafts Architects of California*. Berkeley: University of California Press, 1997.

Wolfe, Tom, and Leonard Garfield. "'A New Standard for Living': The Lustron House, 1946-1950." In *Perspectives in Vernacular Architecture III*, ed. Thomas Carter and Bernard L. Herman. Columbia: University of Missouri Press, 1989.

Wood, Charles B., III. "The New 'Pattern Books' and the Role of the Agricultural Press." In *Prophet with Honor: The Career of Andrew Jackson Downing, 1815-1852*, ed. Tatum and MacDougall.

Woods, Amy Lamb. "Keeping a Lid on It: Asbestos-Cement Building Materials." In *Preserving the Recent Past 2*, ed. Slaton and Foulks.

Other Suburban Property Types

Clausen, Meredith. "Northgate Regional Shopping Center in Suburb and City." *Journal of American Planning Association* 51 (autumn 1985): 449-60.

Cohen, Lizbeth. "From Town Center to Shopping Center: The Reconfiguration of Community Marketplaces in Postwar America." *American Historical Review*, 101 (October 1996): 1050-81.

Gillette, Howard, Jr. "The Evolution of the Planned Shopping Center in Suburb and City." *Journal of the American Planning Association* 51 (autumn 1985): 449-60.

Gruen, Victor, and Larry Smith. *Shopping Towns USA: The Planning of Shopping Centers*. New York: Reinhold, 1960.

Jennings, Jan, ed. *Roadside America: The Automobile in Design and Culture*. Ames, Iowa: Iowa State University Press and the Society for Commercial Archeology, 1990.

Langdon, Philip. *Orange Roofs, Golden Arches: The Architecture of American Chain Restaurants*. New York: Alfred A. Knopf, 1986.

Liebs, Chester H. *Main Street to Miracle Mile: American Roadside Architecture*. Boston: Little, Brown, 1985.

Longstreth, Richard W. *City Center to Regional Mall: The Architecture, the Automobile, and Retailing in Los Angeles, 1920 to 1950*. Cambridge: MIT Press, 1997.

_____. "Diffusion of the Community Shopping Center Concept During the Interwar Decades." *Journal of Society of Architectural Historians* 56 (September 1997): 268-93.

_____. *The Drive-In, the Supermarket, and the Transformation of Commercial Space in Los Angeles, 1914-1941*. Cambridge and London: MIT Press, 1999.

_____. "J.C. Nichols, the Country Club Plaza, and Notions of Modernity." *Harvard Architectural Review* 5:120-35.

_____. "The Neighborhood Shopping Center in Washington, D.C., 1930-1941." *Journal of the Society of Architectural Historians* 51 (March 1992): 5-34.

Muller, Peter O. *Suburbanization of Corporate Headquarters*. Englewood Cliffs, N.J.: Prentice-Hall, 1978.

Witzel, Michael Karl. *The American Drive-In: History and Folklore of the Drive In Restaurant in American Car Culture*. Osceola, Wisconsin: Motorbooks, 1994.

Yard Design and Gardening

Adams, William Howard. "Breaking New Ground: Twentieth-Century American Gardens". In *Keeping Eden*, ed. Walter T. PUNCH. Boston: Massachusetts Horticultural Society, Bulfinch Press, 1992, 63-79.

Chase, Laura. "Eden in the Orange Groves: Bungalows and Courtyard Houses of Los Angeles." *Landscape* 25 (3): 29-36.

Clayton, Virginia Tuttle. *The Once and Future Gardener: Garden Writing from the Golden Age of Magazines, 1900-1940*. Boston: David R. Godine Publishers, 2000.

Doell, M. Christine Klim. *Gardens of the Gilded Age: Nineteenth-Century Gardens and Homegrounds of New York State*. Syracuse: Syracuse University Press, 1986.

Donovan, Daniel. "The Hundred Gardens: The Social, Historical, and Design Contexts of Hollin Hills." In *Daniel Urban Kiley: The Early Gardens*, ed. William S. Saunders. New York, NY: Princeton Architectural Press, 1999, 37-46.

Duchscherer, Paul, and Douglas Keister. *Outside the Bungalow: America's Arts and Crafts Garden*. New York: Penguin Studio, 1999.

Grese, Robert E. "The Prairie Gardens of O.C. Simonds and Jens Jensen." In *Regional Garden Design in the United States*, ed. Therese O'Malley and Marc Treib. Washington: D.C.: Dumbarton Oaks, 1995, 39-64.

_____. *Jens Jensen: Maker of Parks and Gardens*. Baltimore: Johns Hopkins University Press, 1992.

Griswold, Mac, and Eleanor Weller. *The Golden Age of American Gardens*. New York: Harry N. Abrams, 1992.

Groth, Paul. "Lot, Yard, and Garden: American Gardens as Adorned Yards." *Landscape* 30, no. 3 (1988).

_____. "Lot, Yard, and Garden: American Distinctions." *Landscape* 32 (1990): 29-35.

Gebhard, David. "Fifty Years of the American Home." *Landscape* 8 (Autumn 1958): 5-9.

Gundaker, Grey, and Tynes Cowan, eds. *Keep Your Head to the Sky: Interpreting African American Home Ground*. Charlottesville: University of Virginia Press, 1998.

Gundaker, Grey. "African-American History, Cosmology, and the Moral Universe." *Journal of Garden History* 14: 179-205.

_____. "Tradition and Innovation in African-American Yards." *African Arts* 26: 58-71.

Harris, Dianne. "Making Your Private World: Modern Landscape Architecture and House Beautiful." In *The Architecture of Landscape, 1940-1960*, Marc Treib, ed. Philadelphia: University of Pennsylvania Press, forthcoming.

Hayward, D.G. "Home as an Environmental and Psychological Concept." *Landscape* 20 (1975): 2-9.

Helphand, Kenneth I. "McUrbia: The 1950s and the Birth of the Contemporary American Landscape." *Places* 5, no. 2 (1980): 40-49.

Hill, May Brawley. *Grandmother's Garden: The Old-Fashioned American Garden, 1865-1915*. New York: Harry N. Abrams, 1995.

Howett, Catherine M. "Frank Lloyd Wright and American Residential Landscaping." *Landscape* 26, no. 1 (1982): 33-40.

_____. "Graces and Modest Majesties: Landscape and Garden Traditions of the American South." In *Keeping Eden*, ed. PUNCH, 81-95.

Hunt, John Dixon, and Joachim Wolschke-Bulmahn, eds. *The Vernacular Garden*. Washington, D.C.: Dumbarton Oaks, 1993.

Imbert, Dorothee. "Of Gardens and Houses as Places to Live: Thomas Church and William Wurster." In *Everyday Modernism: The Houses of William Wurster*, ed. Treib.

Jackson, John Brinckerhoff. "The Craftsman Style and Technostyle." In *Discovering the Vernacular Landscape*. New Haven and London: Yale University Press, 1984. Originally published as "The Craftsman Style," *VIA*, Philadelphia: Graduate School of Fine Arts, University of Pennsylvania, 1975.

Jackson, J. B. "Several American Landscapes." In *Landscapes: Selected Writings of J.B. Jackson*, ed. Ervin H. Zube. Amherst: University of Massachusetts Press, 1970.

_____. "Nearer than Eden?" In *The Necessity for Ruins and Other Topics*. Amherst: University of Massachusetts Press, 1980. Also published in *Landscape* 20, no. 2 (Winter 1976): 19-36.

Jellicoe, Geoffrey, et al., eds. *The Oxford Companion to Gardens*. New York: Oxford University Press, 1986.

Jenkins, Virginia Scott. *The Lawn: A History of an American Obsession*. Washington, D.C.: Smithsonian Institution Press, 1994.

Karson, Robin. Fletcher Steele, *Landscape Architect: An Account of the Gardener's Life, 1885-1971*. New York: Sagapress/Abrams, 1989.

Klopper, Mark A. "Theme and Variation at Hollin Hills: A Typological Investigation." In *Daniel Urban Kiley: The Early Gardens*, ed. Saunders, 47-64.

Ladd, F. "Residential History: You Can Never Go Home Again." *Landscape* 21, no. 2 (1977): 15-20.

Laurie, Michael. "The Gift of Thomas Church: With a Visionary Understanding of California's Climate and Clients, This Landscape Architect Created a Lasting Vernacular for Western Garden Design." *Horticulture*, September 1985.

Lawliss, Lucy. *Residential Work of the Olmsted Firm in Georgia, 1893-1937*. Winston-Salem, N.C.: Southern Gardens History Society, 1993.

Leighton, Ann. *American Gardens of the Nineteenth Century: For Comfort and Affluence*. Amherst: University of Massachusetts Press, 1987.

Lewis, Pierce. "The Making of Vernacular Taste: The Case of *Sunset* and *Southern Living*." In *The Vernacular Garden*, ed. Hunt, 107-36.

Major, Judith K. *To Live in the New World: A.J. Downing and American Landscape Gardening*. Cambridge: MIT Press, 1997.

Marranca, Bonnie, ed. *American Garden Writing*. N.Y.: PAJ Publications, 1988.

O'Malley, Therese. "The Lawn in Early American Landscape and Garden Design." In *The American Lawn--Surface of Everyday Life*, ed. Georges Teysot. Princeton, N.J.: Princeton Architectural Press, with Canadian Centre for Architecture, 1999.

O'Malley, Therese, and Marc Treib, eds. *Regional Garden Design in the United States*. Washington: D.C.: Dumbarton Oaks, 1995.

Padilla, Victoria. *Southern California Gardens*. Berkeley: University of California Press, 1961.

Punch, Walter T., ed. *Keeping Eden: A History of Gardening in America*. Boston: Massachusetts Horticultural Society and Bulfinch Press, 1992.

Rogers, Elizabeth Barlow. *Landscape Design: A Cultural and Architectural History*. New York: Harry N. Abrams, 2001.

Saunders, William S., ed. *Daniel Urban Kiley: The Early Gardens*. New York: Princeton Architectural Press, 1999.

Schroeder, Fred E.H. *Front Yard America: The Evolution and Meanings of a Vernacular Domestic Landscape*. Bowling Green, Oh.: BGSU Popular Press, 1993.

Schuyler, David. *Apostle of Taste: Andrew Jackson Downing, 1815-1852*. Baltimore: Johns Hopkins University Press, 1996.

_____. Introduction to *Victorian Gardens: Art of Beautifying Suburban Home Grounds*, by Frank J. Scott. 1870. Reprint, Watkins Glen, New York: American Life Foundation, 1982.

Seaton, B. "Gardening Books for the Commuter's Wife, 1900-1937." *Landscape* 28 (1985): 41-47.

Simo, Melanie L. *Loudon and the Landscape: From Country Seat to Metropolis, 1783-1843*. New Haven: Yale University Press, 1988.

_____. "Regionalism and Modernism: Some Common Roots". In *Keeping Eden*, ed. Punch, 45-61.

Streatfield, David C. "The Arts and Crafts Garden in California." In *The Arts and Crafts Movement in California*, ed. Trapp, 35-54.

_____. *California Gardens: Creating a New Eden*. New York: Abbeville Press, 1994.

_____. "Westward Expansion." In *Keeping Eden*, ed. Punch, 97-117.

Tankard, Judith B. *The Gardens of Ellen Biddle Shipman*. New York: Sagapress and Harry Abrams, 1996.

Tatum, George B. and Elisabeth B. MacDougall, eds. *Prophet with Honor: The Career of Andrew Jackson Downing, 1815-1852*. Washington, D.C.: Dumbarton Oaks, 1989.

Tatum, George B. "Introduction to the Dover Edition;" *Treatise on the Theory and Practice of Landscape Gardening, Adapted to North America*. 7th ed. New York: Orange Judd, 1865. Reprinted as *Landscape Gardening and Rural Architecture*. A.J. Downing. New York: Dover Publications, 1991. v-xxii.

Teyssot, Georges, ed. *The American Lawn—Surface of Everyday Life*. Princeton, N.J.: Princeton Architectural Press, with Canadian Centre for Architecture, 1999.

Thornton, Sally Bullard. *Daring to Dream: The Life of Hazel Wood Waterman*. San Diego Historical Society, 1987.

Tishler, William H., ed. *Midwestern Landscape Architecture*. Urbana and Chicago: University of Illinois Press, 2000.

Tishler, William H. and Virginia Luckhardt. "H.W.S. Cleveland, Pioneer Landscape Architect to the Upper Midwest." *Minnesota History*, Fall 1985.

Treib, Marc. "Thomas Church, Garrett Eckbo, and the Postwar California Garden." In *Preserving the Recent Past* 2, ed. Slaton and Fouls.

_____, ed. *The Architecture of Landscape, 1940-1960*. Philadelphia: University of Pennsylvania Press, forthcoming.

Treib, Marc, and Dorothee Imbert. *Garrett Eckbo: Modern Landscapes for Living*. Berkeley: University of California Press, 1997.

_____, eds. *Thomas Church*. Special Issue. *Studies in the History of Gardens and the Designed Landscape*, 20, no. 2 (April-June 2000).

Volkman, Nancy J. "Landscape Architecture on the Prairie: The Work of H.W.S. Cleveland." *Kansas History*, summer 1987.

Weitz, Karen. "Utopian Place Making: The Built Environment in Arts and Crafts California." In *The Arts and Crafts Movement in California*, ed. Trapp, 89-108.

Westmacott, Richard. *African-American Gardens and Yards in the Rural South*. Knoxville: University of Tennessee Press, 1992.

_____. "Pattern and Practice in Traditional African-American Gardens in Rural Georgia." *Landscape Journal* 10, no. 2 (1991): 87-104.

Woodburn, Elisabeth. "American Horticultural Books." In *Keeping Eden*, ed. Punch, 241-59.

Wright, Gwendolyn. "Sweet and Clean: The Domestic Landscape in the Progressive Era." *Landscape* 20, no. 1 (October 1975): 38-43.

Yoch, James J. *Landscaping the American Dream: The Gardens and Film Sets of Florence Yoch, 1890-1972*. New York: Sagapress and Abrams, 1989.

Selected Pattern Books, Landscape Guides, and House Catalogs (Reprints and Recent Editions)

Aladdin Company. *Aladdin Homes "Built in a Day" Catalog No. 29*. 1917. Reprint, New York: Dover Publications, 1995.

Barber, George F., and Company. *The Cottage Souvenir No. 2*. 1892. Reprint, with an introduction by Michael A. Tomlan, Watkins Glen, New York: American Life Foundation, 1982.

Beecher, Catharine E., and Harriet Beecher Stowe. *The American Woman's Home*. 1869. Reprint, with an introduction by Joseph Van Why, Hartford: Stowe-Day Foundation, 1975.

Church, Thomas D. *Gardens Are for People: How to Plan for Outdoor Living*. 3rd ed. Revised by Grace Hall and Michael Laurie, Berkeley: University of California, 1995.

_____. *Your Private World*. San Francisco: Chronicle Publishing, 1962.

Cleveland, Henry W., William Backus, and Samuel D. Backus. *Village and Farm Cottages: A Victorian Style Book*. 1856. Reprint of *Village and Farm Cottages: The Requirements of American Village Homes*, with an introduction by David Schuyler, Watkins Glen, New York: American Life Foundation, 1982.

Cleveland, H.W.S. *Landscape Architecture as Applied to the Wants of the West*. 1873. Reprint, with an introduction by Daniel Nadenicek and Lance M. Neckar, Amherst: University of Massachusetts Press and Library of American Landscape History, 2001.

Comstock, William Phillips, and Clarence Eaton Schermerhorn. *Bungalows, Camps and Mountain Houses*. Rev. ed., 1915. Reprint, with an introduction by Tony P. Wrenn, Washington, D.C.: American Institute of Architects Press, 1990.

Copeland, Robert Morris. *Country Life: A Handbook of Agriculture and Book of Landscape Gardening*. 1866. Reprint, Amherst: University of Massachusetts Press and Library of American Landscape History, forthcoming.

Downing, Andrew Jackson. *Landscape Gardening and Rural Architecture*. 7th ed., 1865. Reprint of *Treatise on the Theory and Practice of Landscape Gardening*, with an introduction by George B. Tatum, New York: Dover Publications, 1991.

_____. *A Treatise on the Theory and Practice of Landscape Gardening*. 9th ed., 1875. Reprint, Little Compton, Rhode Island: Theophrastus Publishers, 1977.

_____. *Rural Essays*. 1894. Reprint, New York: DaCapo Press, 1974.

_____. *Victorian Cottage Residences*. 1873. Reprint of *Cottage Residences or, A Series of Designs for Rural Cottages and Cottage Villas and Their Gardens and Grounds*, with a preface by Adolf K. Placzek, New York: Dover Publications, 1981.

_____. *The Architecture of Country Houses, Including Designs for Cottages, and Farmhouses, and Villas*. 1850. Reprint, with an introduction by J. Stewart Johnson, New York: Dover Publications, 1969.

Eckbo, Garrett. *Landscape for Living*. 1950. Reprint, Amherst: University of Massachusetts Press and Library of American Landscape History, forthcoming.

Ely, Helena Rutherford. *A Woman's Hardy Garden*. (1903). Reprint, with a foreword by Ann Lovejoy, New York: Macmillan, 1990.

Ford, James, and Katherine Morrow Ford. *The Modern House in America*. 1940. Reprint of *Classic Modern Homes of the Thirties*. New York: Dover Publications, 1989.

Fowler, Orson S. *The Octagon House: A Home for All*. 1853. Reprint of *A Home for All, or the Gravel Wall and Octagon Mode of Building*, with an introduction by Madeleine B. Stern, New York: Dover Publications, 1973.

Gordon-Van Tine Company. *117 House Designs of the Twenties*. 1923. Reprint, New York: Dover Publications, 1992.

Hegemann, Werner, and Elbert Peets. *The American Vitruvius: An Architects' Handbook of Civic Art*. 1922. Reprint, with an introduction by Alan J. Plattus, preface by Leon Krier, and introductory essay by Christiane Crasemann Collins, New York: Princeton Architectural Press, 1988.

Holly, Henry Hudson. *Holly's Picturesque Country Seats*. 1863. Reprint of *Holly's Country Seats and Modern Dwellings*, with an introduction by George B. Tatum, New York: Dover Publications, 1993.

Howard, Ebenezer. *Garden Cities of Tomorrow*. 1898. Reprint. Cambridge, Mass.: MIT Press, 1965.

Hubbard, Theodora Kimball, and Henry Vincent Hubbard. *Our Cities Today and Tomorrow: A Survey of Planning and Zoning Progress in the United States*. 1929. Reprint, New York: Arno Press, 1974.

Hutcheson, Martha Brookes. *The Spirit of the Garden*. 1923. Reprint, with an introduction by Rebecca Warren Davidson, Amherst: University of Massachusetts Press and Library of Landscape History, 2000.

Jones, Robert T., ed. *Authentic Small Houses of the Twenties*. 1929. Reprint of *Small Homes of Architectural Distinction: A Book of Suggested Plans Designed by The Architects' Small House Service Bureau, Inc.*, New York: Dover Publications, 1987.

Keeler, Charles. *The Simple Home*. 1904. Reprint, Santa Barbara: Peregrine Smith, 1979.

Miller, Wilhelm. *Prairie Spirit of Landscape Gardening*. 1915. Reprint, with an introduction by Christopher Vernon, Amherst: University of Massachusetts Press and Library of American Landscape History, 2001.

Nolen, John. *New Towns for Old*. 1927. Reprint, Amherst: University of Massachusetts Press and Library of American Landscape History, forthcoming.

Palliser, Charles, and George Palliser. *The Palliser's Late Victorian*. Reprint, with an introduction by Michael A. Tomlan, Watkins Glen, New York: American Life Foundation, 1978.

_____. *Palliser's Model Homes*. 1878. Reprint, with a foreword by Kermit L. Darrow, Felton, Calif.: Glenwood Publishers, 1972.

Parsons, Samuel, Jr. *The Art of Landscape Architecture*. 1915. Reprint, Amherst: University of Massachusetts Press and Library of American Landscape History, forthcoming.

Radford Architectural Company. *Radford's Artistic Bungalows: The Complete 1908 Catalog*. 1908. Reprint, New York: Dover Publications, 1997.

Reed, Samuel Burrage. *Victorian Dwellings for Village and Country*. 1885. Reprint of *Dwellings for Village and Country*, New York: Dover Publications, 1999.

Roberts, Edith A., and Elsa Rehmman. *American Plants for American Gardens*. 1929. Reprint, with foreword by Darrel G. Morrison, Athens: University of Georgia Press, 1996.

Scott, Frank J. *Victorian Gardens: The Art of Beautifying Suburban Home Grounds*. 1870. Reprint of *Art of Beautifying Suburban Home Grounds*, with an introduction by David Schuyler, Watkins Glen, New York: American Life Foundation, 1982.

Sears, Roebuck and Company. *Sears, Roebuck Catalog of Houses, 1926: An Unabridged Reprint*. 1926. Reprint of 1926 *Catalog of Houses*, New York: Dover Publications, 1991.

Shoppell, R. W. et al. *Turn-of-the-Century Houses, Cottages, and Villas*. Reprint of selections from *Building Designs* (ca. 1890) and *Modern Houses* (1890 and 1900), with a publisher's note, New York: Dover Publications, 1983.

Simonds, Ossian Cole. *Landscape Gardening*. 1920. Reprint, with an introduction by Robert E. Grese, Amherst: University of Massachusetts Press and Library of American Landscape History, 2000.

Smith, Henry Atterbury, comp. *500 Small Houses of the Twenties*. 1923. Reprint of *The Books of A Thousand Homes: Volume One*, New York: Dover Publications, 1990.

Stickley, Gustav, ed. *Craftsman Bungalows: 59 Homes from "The Craftsman"*. Reprint of selections from *The Craftsman* published from 1901 to 1916, with an introduction by Alan Weissman, New York: Dover Publications, 1988.

_____. *Craftsman Homes: Architecture and Furnishings of the American Arts and Crafts Movement*. 2nd ed., 1909. Reprint, New York: Dover Publications, 1979.

_____. *More Craftsman Homes*. 1912. Reprint, New York: Dover Publications 1982.

Sunset Magazine, ed. *Sunset Western Ranch Houses*. 1946. Reprint, Santa Monica: Hennessey & Ingalls, 1999.

Sunset Magazine, ed. *Western Ranch Houses by Cliff May*. 1958. Reprint, Santa Monica: Hennessey & Ingalls, 1997.

Unwin, Raymond. *Town Planning in Practice: An Introduction to the Art of Designing Cities and Suburbs*. 6th impression. 1919. Reprint, with a new preface by Andres Duany and new introduction by Walter Creese, New York: Princeton Architectural Press, 1994.

Vaux, Calvert. *Villas and Cottages: The Great Architectural Style-Book of the Hudson River School*. 2nd ed., 1864. Reprint of *Villas and Cottages: A Series of Designs Prepared for Erection in the United States*, New York: Dover Publications, 1970.

von Holst, Hermann Valentin. *Country and Suburban Homes of the Prairie School Period*. 1913. Reprint of *Modern American Homes*, New York: Dover Publications, 1982.

Waugh, Frank. *Book of Landscape Gardening*. 1926. Reprint, Amherst, University of Massachusetts Press and Library of American Landscape History, forthcoming.

Weidenmann, Jacob. *Victorian Landscape Gardening: A Facsimile of Jacob Weidenmann's Beautifying Country Homes*. 1870. Reprint of *Beautifying Country Homes*, with an introduction by David Schuyler, Watkins Glen, New York: American Life Foundation, 1978.

Wheeler, Gervase. *Homes for the People in Suburb and Country*. 1855. Reprint, New York: Arno Press, 1972.

Royal Barry Wills Associates. *Houses for Good Living*. Revised and expanded edition, New York: Architectural Book Publishing Company, 1993.

Wilson, Henry L. *California Bungalows of the Twenties*. n.d. Reprint of *A Short Sketch of the Evolution of the Bungalow: From Its Primitive Crudeness to its Present State of Artistic Beauty and Cozy Convenience*, New York: Dover Publications, 1993.

Dissertations

Burns, Elizabeth Kates. "The Process of Suburban Residential Development: The San Francisco Peninsula, 1860-1970." Ph.D. dissertation, University of California, Berkeley, 1974.

Chase, Susan Mulchahey. "The Process of Suburbanization and the Use of Restrictive Deed Covenants as Private Zoning, Wilmington, Delaware, 1900-1941." Ph.D. dissertation, University of Delaware, 1995.

Checkoway, Barry N. "Suburbanization and Community: The Postwar Development and Planning of Lower Bucks County, Pennsylvania." Ph.D. dissertation, University of Pennsylvania, 1977.

Clark, James Everett. "The Impact of Transportation Technology on Suburbanization in the Chicago Region, 1830-1920." Ph.D. dissertation, Northwestern University, 1977.

Clouse, Richard Ross. "Where Art is Combined with Nature: Village Improvement in Nineteenth-Century New England," Vol. I-III. Ph.D. dissertation, Cornell University, 1987.

Clouser, Roger A. "The Ranch House in America," Ph.D. dissertation, University of Kansas, 1984.

Flint, Barbara J. "Zoning and Residential Segregation: A Social and Physical History, 1910-1940." Ph.D. dissertation, University of Chicago, 1977.

Hancock, John L. "John Nolen and the American City Planning Movement." Ph.D. dissertation, University of Pennsylvania, 1964.

Hawkins, Kenneth B. "The Therapeutic Landscape: Nature, Architecture, and Mind in Nineteenth-Century America." Ph.D. dissertation, University of Rochester, 1991.

Haynes, Bruce. "Constructing a Black Suburban Community: The Genesis and Development of Runyon Heights, Yonkers, New York, 1910-1990." Ph.D. dissertation, City University of New York, 1994.

Hutchison, Janet Anne. "American Housing, Gender, and the Better Homes Movement, 1922-1935." Ph.D. dissertation, University of Delaware, 1989.

Kehler, Joel R. "A House Divided: Domestic Architecture as American Romantic Subject and Symbol." Ph.D. dissertation, Lehigh University, 1975.

Lynch, Bruce E. "Shaker Heights: The Garden Suburb in America." Ph.D. dissertation, University of Illinois, 1978.

Martin, Christopher. "Tract House Modern: A Study of Housing Design and Consumption in the Washington Suburbs, 1946-1960." Ph.D. dissertation, George Washington University, 1999.

Merino, James Anthony. "A Great City and Its Suburbs: Attempts to Integrate Metropolitan Boston, 1865-1920." Ph.D. dissertation, University of Texas at Austin, 1968.

Michelson, Alan R. "Towards a Regional Synthesis: The Suburban and Country Residences of William Wilson Wurster, 1922-1964." Ph.D. dissertation, Stanford University, 1993.

Pardun, Carol Jean. "How the Architectural Style of the House Relates to Family Television Viewing." Ph.D. dissertation, University of Georgia, 1992.

Prendergast, Norma. "The Sense of Home: Nineteenth Century Domestic Architectural Reform." Ph.D. dissertation, Cornell University, 1981.

Rome, Adam Ward. "Prairie Creek Hills Estates: An Environmental History of American Homebuilding, 1945-70." Ph.D. dissertation, University of Kansas, 1996.

Sies, Mary Corbin. "American Country House Architecture in Context: The Suburban Ideal of Living in the East and Midwest, 1877-1917." Ph.D. dissertation, University of Michigan, 1987.

Taylor, Henry Louis. "The Building of a Black Industrial Suburb: The Lincoln Heights, Ohio, Story." Ph.D. dissertation, State University of New York at Buffalo, 1979.

Weise, Andrew. "Struggle for the Suburban Dream: African American Suburbanization Since 1916." Ph.D. dissertation, Columbia University, 1993.

Wheaton, William Linous Cody. "The Evolution of Federal Housing Programs." Ph.D. dissertation, University of Chicago, 1953.

Wilson, Leslie. "Dark Spaces: An Account of Afro-American Suburbanization." Ph.D. dissertation, City University of New York, 1991.

Selected Theses

Bobeczeko, Laura Lyn. "America Builds for Her Renter Millions: The Built Legacy of the Rental Housing Division of the Federal Housing Administration, 1935-1942." M.A. thesis, George Washington University, 2000.

Bricker, David. "Built For Sale: Cliff May and the Low Cost California Ranch House." M.A. thesis, University of California, Santa Barbara, 1983.

Christgau, Eugene. "Unincorporated Communities in Cook County." M.A. thesis, University of Chicago, 1942.

Hamley, Kara Cathleen. "Cleveland's Park Allotment: Euclid Heights, Cleveland Heights, Ohio, and Its Designer, Ernest W. Bowditch." M.A. thesis, Cornell University, 1996.

Korff, Mary Blaine. "Stephen Child: Visionary Landscape Architect." M.A. thesis, University of Arizona, Tucson, 1991.

Moudry, Roberta M. "Gardens, Houses, and People: The Planning of Roland Park, Baltimore." M.A. thesis, Cornell University, 1990.

Savage, Beth Lynn. "The Inception and Early Historical Development of the Planned Neighborhood Shopping Center in the Washington Area from 1930 to 1942." M.A. thesis, George Washington University, 1989.

Sechrist, Stephanie Ann. "Silver Spring, Maryland: Residential Development of a Washington Suburb, 1920 to 1935." M.A. thesis, George Washington University, 1993.

Struble, Kristie Dixon. "Hollin Hills: The Introduction of Nature into a Mid-Twentieth Century Suburb." M.A. thesis, University of Virginia, 1987.

Williams, Robert Luther. "Eighty Years of Subdivision Design: An Historical Evaluation of Land Planning Techniques in San Mateo County, California." M.C.P. thesis, University of California, Berkeley, 1952.

Zarakov, Barry. "California Planned Communities of the 1920s." M.A. thesis, University of California, Santa Barbara, 1977.

Selected Multiple Property Listings

Multiple Property Submission "covers" are available at <www.nr.nps.gov>.

Apartment Hotels in Birmingham, 1900-1930, TR, Alabama

Lustron Houses in Alabama MPS, Alabama

Spanish Revival Residences in Mobile MPS, Alabama

Historic Apartment Buildings MPS, Arkansas

Historically Black Properties in Little Rock's Dunbar School Neighborhood MPS, Arkansas

Little Rock Apartment Buildings MPS, Arkansas

Educational Buildings in Phoenix MPS, Arizona

Residential Subdivisions and Architecture in Phoenix MPS, Arizona

Roosevelt Neighborhood MRA, Arizona

Bungalow Courts of Pasadena TR, California

Lilian Rice-Designed Buildings at Rancho Santa Fe MPS, California

Los Angeles Branch Library System TR

Residential Architecture of Pasadena, California, 1895-1918: The Influence of the Arts and Crafts Movement MPS

Wartime Emergency Housing in Bridgeport, Connecticut, 1916-1920, MPS

Parkways of the National Capital Region MPS, District of Columbia, Maryland, and Virginia

Apartment Buildings in Washington, D.C., 1880-1945, MPS

Clubhouses of Florida's Woman's Clubs MPS

Winterhaven, Florida MPS

Lustron Houses in Georgia MPS

Shotgun Houses of Athens, Clark County, MPS, Georgia

Boise Public Schools TR, Idaho

Tourtellotte and Hummel Architecture TR, Idaho

American Woman's League Chapter Houses TR, Illinois

Chicago Park District MPS, Illinois

Highland Park MRA, Illinois

Historic Resources of Maywood, Illinois MPS

Hyde Park Apartment Hotels TR, Illinois

Illinois Carnegie Libraries MPS

Suburban Apartment Buildings in Evanston TR, Illinois

Apartments and Flats of Downtown Indianapolis TR, Indiana

The Bungalow and Square House: Des Moines Residential Growth and Development MPS, Iowa

Iowa Usonian Houses by Frank Lloyd Wright, 1945-1960, MPS

Prairie School Architecture in Mason City TR, Iowa

Small Homes of Howard F. Moffitt in Iowa City and Coralville, Iowa, MPS

Suburban Development in Des Moines Between the World Wars, 1918-1941, MPS, Iowa

Towards a Greater Des Moines: Development and Early Suburbanization, ca 1880-ca 1920, MPS, Iowa

Lustron Houses of Kansas, MPS

Louisville and Jefferson County MPS, Kentucky

Historic Residential Architecture of Bangor MPS, Maine

Brookline MRA, Massachusetts

Newton MRA, Massachusetts

Stoneham MRA, Massachusetts

Water Supply System of Metropolitan Boston MPS, Massachusetts

Worcester Three-Deckers TR, Massachusetts

Residential Structures in Kansas City, Missouri, by Mary Rockwell Hook TR

St. Joseph MPS, Missouri

Armour Boulevard MRA, Missouri

Suburban Schools in Butte MPS, Montana

Nineteenth Century Terrace Houses TR, Nebraska

Lustrons in New Jersey MPS

Operating Passenger Railroad Stations TR, New Jersey

Multi-Unit Dwellings in Albuquerque MPS, New Mexico

Albuquerque Downtown Neighborhoods MRA, New Mexico

Twentieth Century Suburban Growth of Albuquerque MPS, New Mexico

A.T. Stewart Resources, Garden City, New York, TR

Hudson Highlands MPS, New York

Masten Neighborhood Rows TR, New York

Olmsted Parks and Parkways TR, Buffalo, New York

African-American Neighborhoods in Northeastern Winston-Salem MPS, North Carolina

Early Twentieth Century Raleigh Neighborhoods TR, North Carolina

Eastlake Houses of Ashly TR, Ohio

Hobart Welded Steel Houses TR, Ohio

Architecture of Ellis F. Lawrence MPS, Oregon

Craftsman Bungalows in Descutes County MPS, Oregon

Middle-Class Apartments in East Portland MPS, Oregon

Philadelphia Public Schools TR, Pennsylvania

Pittsburgh Public Schools TR, Pennsylvania

Early Twentieth Century Schools in Puerto Rico TR

Single-Family Houses in Rhode Island MPS

Lustron Houses in South Dakota MPS

Cement Construction in Richard City MPS, Tennessee

Memphis Park and Parkway System MPS, Tennessee

Oak Ridge MPS, Tennessee

Public Schools of Memphis, 1902-1915, MPS, Tennessee

Residential Resources of Memphis MPS, Tennessee

Entrepreneurial Residences of Turn-of-the-Century Provo, Utah, TR

Perkins Addition Streetcar Suburb TR, Utah

Three-Story Apartment Buildings in Ogden, Utah, 1908-1928, MPS

Hilltop Neighborhood MPS, Washington

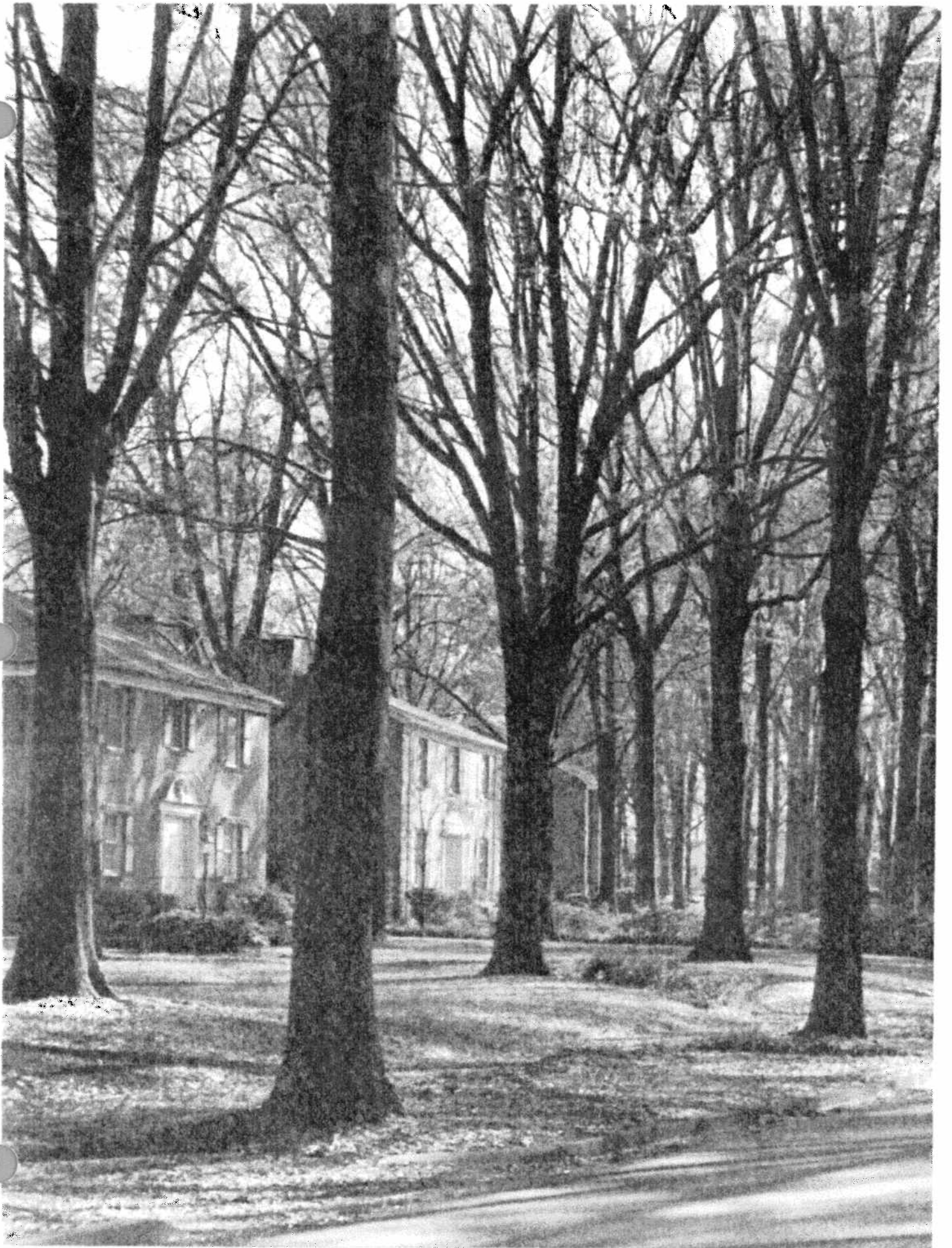
Olympia Residential Architecture MPS, Washington

Women's History in Olympia MPS, Washington

Ernest Flagg Stone Masonry Houses of Milwaukee County TR, Wisconsin

Public Library Facilities of Wisconsin MPS

Rows of willow oaks frame Georgian Revival residences along Queens Road West in Myers Park, Charlotte, North Carolina. Developed between 1911 and 1943 according to a succession of plans by John Nolen, Earle Sumner Draper, and Ezra Clarke Stiles, Myers Park received considerable recognition for its outstanding qualities of landscape design and became an important regional prototype for exclusive planned subdivisions in the Southeast. (Photo by Thomas W. Hanchett, courtesy North Carolina Department of Cultural Resources)



The ideal of suburban life in the parklike setting of a self-contained subdivision away from the noise, pollution, and dangers of city streets has fueled the aspirations of increasing numbers of American families since the mid-nineteenth century. Historic residential suburbs, such as the Guilford Historic District in Baltimore, Maryland, resulted from the collaboration of developers, planners, architects, and landscape architects. The contributions of these professional groups, individually and collectively, give American suburbs their characteristic identity as historic neighborhoods, collections of residential architecture, and designed landscapes. *(Photo by Greg Pease, courtesy Maryland Department of Housing and Economic Development)*

