



Falkland Apartments

Silver Spring, Maryland

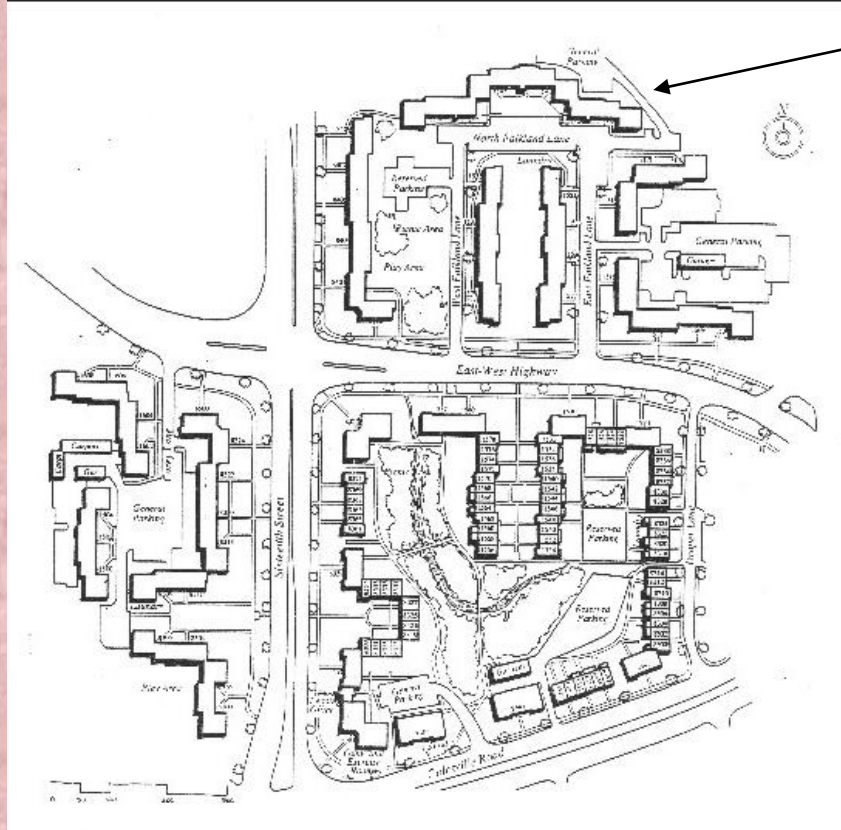
Montgomery County Planning Board

December 6, 2007

Falkland Today



North Parcel, 16th and East-West Highway



Metro tracks

From *Housing in and Around the Nation's Capital: 1935-1945*, by Ralph Bennett and Isabelle Gournay (College Park, MD: University of Maryland School of Architecture 1998. Used with permission.

Falkland Site Plan, 1998

Falkland: New Deal History



New Deal projects drove suburban development

Falkland a Prototype

Private Housing Projects in Capital Set Example for United States

By Franklyn Waltman.

The Washington Post (1877-1954); Nov 28, 1937; ProQuest Historical Newspapers The Washington Post pg. B2

Private Housing Projects in Capital Set Example for United States

U. S. to Be Backstop Under New Approach

Solution to Thorny Problem of Housing Building Believed Found in Feasible Operation of Enterprise Here.

By Franklyn Waltman.

Of all the projects which have attracted the New Deal, the task of solving housing construction has been the most baffling. Indeed, it has been so baffling that little success has marked the most distinguished efforts put forward by President Roosevelt and his cabinet before Congress. Even the House will admit that little success in the housing field has been the least promising of their accomplishments.

It is believed that the new approach to housing construction will be a model for the nation.

The new approach to housing construction is based on the principle of a housing enterprise which is a private enterprise in the sense that it is owned and operated by private individuals or corporations. The enterprise is a housing enterprise in the sense that it is a business which is engaged in the production and sale of housing units.

The new approach to housing construction is based on the principle of a housing enterprise which is a private enterprise in the sense that it is owned and operated by private individuals or corporations. The enterprise is a housing enterprise in the sense that it is a business which is engaged in the production and sale of housing units.



FALKLAND

Roosevelt to Outline Program to Congress

Four Large-Scale Developments in or Near Capital to Be Used to Demonstrate What Can Be Done By Private Capital.

The President will outline a program to Congress which will include four large-scale developments in or near the capital to be used to demonstrate what can be done by private capital.

The President will outline a program to Congress which will include four large-scale developments in or near the capital to be used to demonstrate what can be done by private capital.

A MODEL for the NATION!



BREEWOOD



BUCKINGHAM

The President will outline a program to Congress which will include four large-scale developments in or near the capital to be used to demonstrate what can be done by private capital.

The President will outline a program to Congress which will include four large-scale developments in or near the capital to be used to demonstrate what can be done by private capital.

The President will outline a program to Congress which will include four large-scale developments in or near the capital to be used to demonstrate what can be done by private capital.

Sunnyside Gardens, Queens, New York

1924-28



National Register

2003 photos

**Radburn, Fair Lawn
(Bergen County), New
Jersey**

1928-29



National Register

- from American Architectural Survey

Chatham Village, Pittsburgh

1930-35



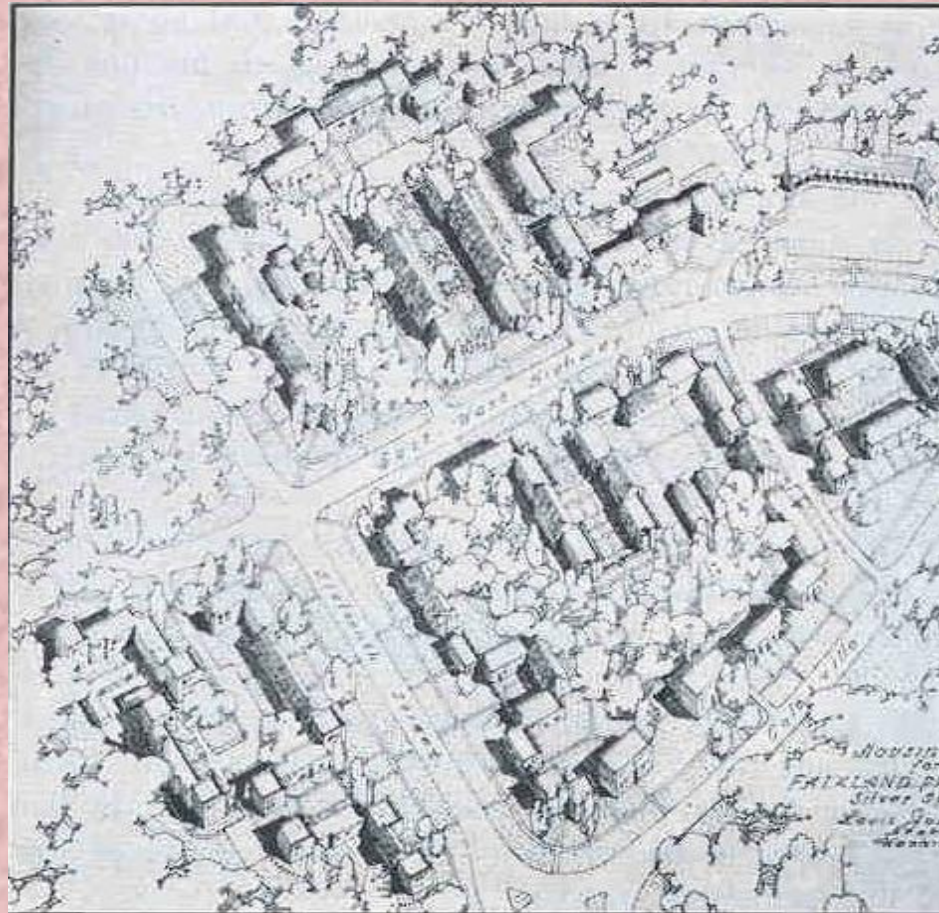
National Register

Colonial Village, Arlington, Virginia



1935-40

National Register



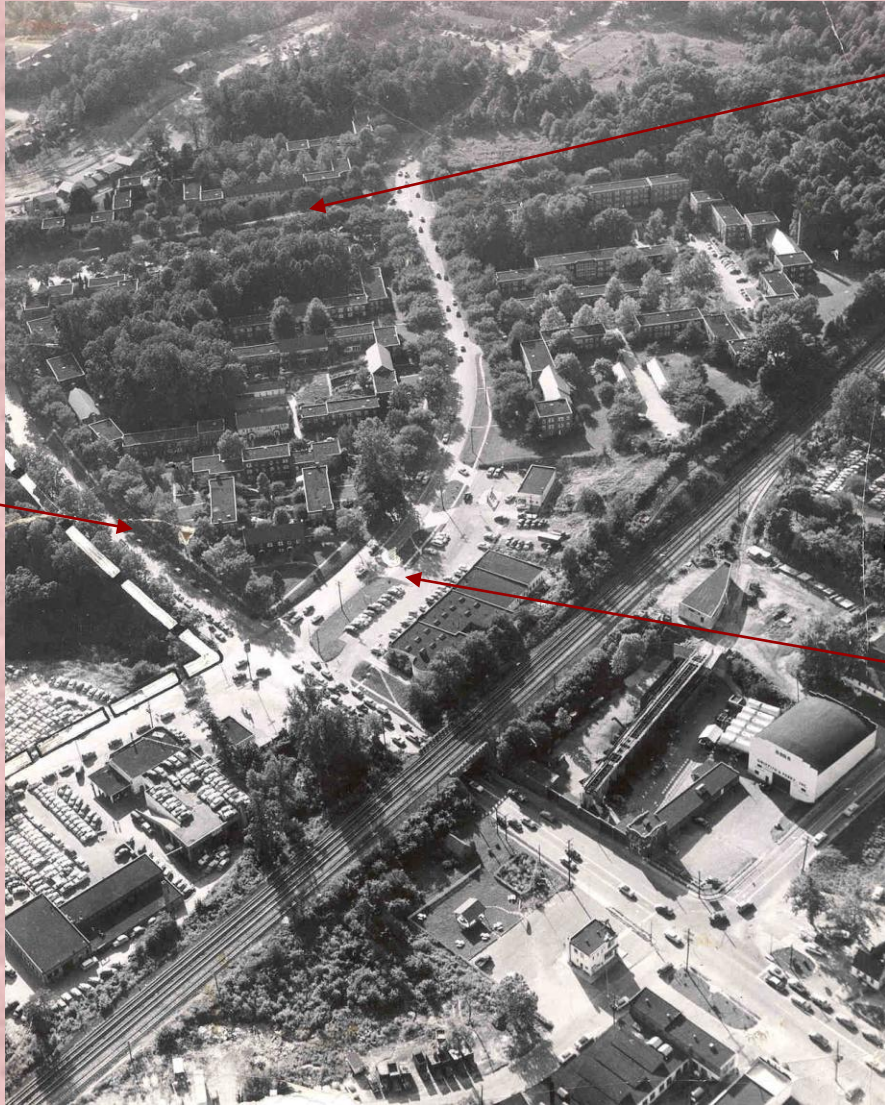
Falkland in 1941, from *Architectural Record*, March 1941 (89, 3): 93

Threats Over the Years



Tenants and civic activists protest pending demolition of Falkland Apartments to build huge housing/commercial complex.

Evening Star, 9/10/72



16th Street

Colesville Road

Falkland in 1955

East-West Hwy.

Falkland Today



Falkland Today



Falkland Today



Falkland Today



Supporters

- **Montgomery Preservation, Inc.**
- **Historic Takoma**
- **Montgomery County Civic Federation**
- **Woodside Park Civic Assoc.**
- **Seven Oaks-Evanswood Civic Assoc.**
- **Civic League of North Portal Estates (DC)**
- **Preservation Maryland**
- **National Trust for Historic Preservation**
- **Maryland Historical Trust**

Supporters

- **Maryland Native Plant Society**
- **Montgomery County Sierra Club**
- **Audubon Naturalist Society**
- **DC Preservation League**
- **Latrobe Chapter, Society of Architectural Historians**
- **Art Deco Society of Washington**

Supporters

- **Richard Longstreth**
 - Past President, Society of Architectural Historians
 - Director, Graduate Program in Historic Preservation, George Washington University
- **Ralph Bennett**
 - Professor of Architecture & Architectural History, University of Maryland; past Chairman, HOC
- **Isabelle Gournay**
 - Professor of Architecture & Architectural History, University of Maryland
- **James M. Goode**
 - Author, *Best Addresses* and *Capital Losses*

Supporters

- **Dorn McGrath**

- Professor Emeritus, Urban and Regional Planning & Geography, George Washington University

- **John Fondersmith**

- Retired urban city planner, DC Office of Planning
- Worked on first Comprehensive Plan for DC and every Plan until 2005

Multifamily Housing in Downtown Silver Spring

**Recently approved, under construction, or
recently completed (since 2002):**

3,582 units

Proposed (*excluding* Falkland):

1,473 units

Total: 5,055 units

Some Designs by Falkland's Architect



2120 Kalorama, 1925

Harvard Hall, 1928



**Fort Dupont Dwellings,
pre-1946**

Other Justement Designs



**E. Barrett Prettyman
Federal Courthouse, 1952**

National Register Eligible

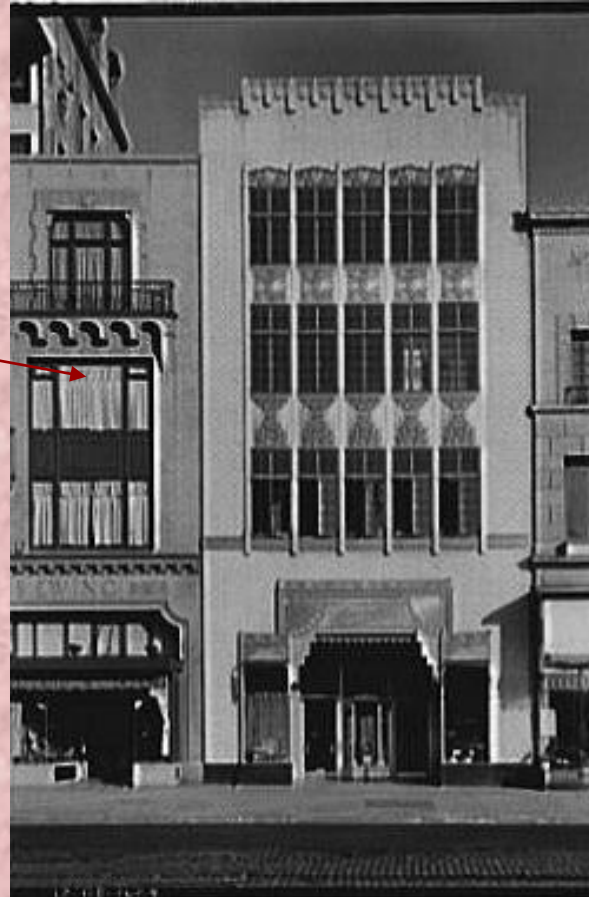


**Longworth House
Office Building, 1933**

Other Justement Designs

**Harris & Ewing
Photographic
Studio (on left)**

1300 block F St., NW



National Register

Falkland Today



North Parcel, 16th and East-West Highway



Falkland Apartments

Silver Spring, Maryland

Montgomery County Planning Board

December 6, 2007