



MONTGOMERY COUNTY DEPARTMENT OF PARKS
THE MARYLAND-NATIONAL CAPITAL PARK AND PLANNING COMMISSION

MCPB
Item# 11
10/22/09

October 12, 2009

TO: Montgomery County Planning Board

VIA: Mary Bradford, Montgomery County Director of Parks
Mike Riley, Deputy Director, Administration
John E. Hench, Chief, Park Planning and Stewardship Division

FROM: Doug Redmond, Principal Natural Resources Specialist
Park Planning and Stewardship Division

SUBJECT: 1. Forest Conservation Plan: MR2007902, Tilden Woods Bioretention Facility
2. Mandatory Referral: MR2007902, Tilden Woods Bioretention Facility

RECOMMENDED ACTION:

1. **Forest Conservation Plan: MR2007902, Tilden Woods Bioretention Facility:** Environmental Planning staff recommends approval of the preliminary forest conservation plan (FCP); Environmental Planning staff will present this item.
2. **Mandatory Referral: MR2007902, Tilden Woods Bioretention Facility:** Approve construction of the project on parkland in Tilden Woods Local Park.

BACKGROUND: The Montgomery County Department of Transportation (DOT) is proposing construction of a bioretention facility to provide water quality treatment for runoff from the paved parking lot in Tilden Woods Local Park (vicinity map attached) to partially mitigate the impacts to 7,520 square feet of forested wetlands and 1,165 square feet of emergent wetlands which occurred during the construction of the Montrose Parkway. This project will satisfy permit requirements specified by the Maryland Department of the Environment and the U.S. Army Corps of Engineers.

BIORETENTION FACILITY DESIGN: The facility, consisting of an excavated area containing planting media, filter media, and an underdrain, will be located in an area bordered by an existing tennis court, playground, and parking lot, and the Old Farm tributary to Cabin John Creek. The facility will drain to the adjacent stream. When construction is complete, the area will be planted with appropriate native plants.

NATURAL RESOURCES INVENTORY AND FOREST STAND DELINEATION: The NRI/FSD was approved by Environmental Planning in March 2009.

MONTGOMERY COUNTY NOISE ORDINANCE: DOT will perform all construction activities in accordance with Section 31(b) of the County Code.

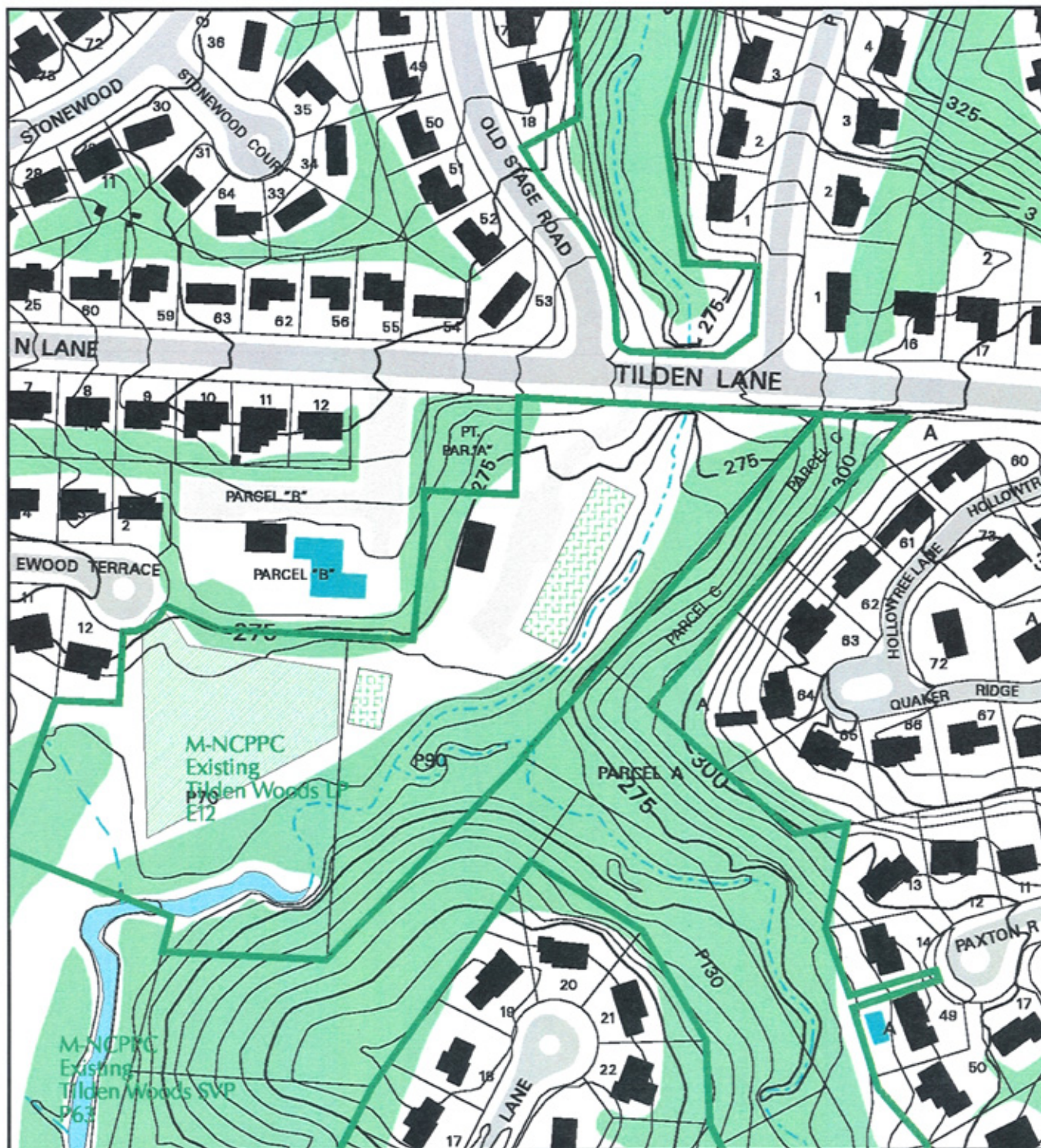
PUBLIC MEETINGS: A public meeting was held at Tildenwoods Local Park on July 9, 2009. Nine area residents attended. DOT's consultant presented a summary of the project and a tour of the proposed site. Those in attendance were generally supportive of the project.

IMPLEMENTATION: If the project is approved, construction is expected to take place during the spring 2010.

MAINTENANCE: Structural maintenance will be performed by MC DEP.

Pc: Brian Woodward
Jeff Devlin
John Penn
Mitra Pedoeem
John Hench

TILDEN WOODS LOCAL PARK



Map compiled on October 12, 2009 at 8:55 AM | Site located on base sheet no - 215NW07

NOTICE

The planimetric, property, and topographic information shown on this map is based on copyrighted Map Products from the Montgomery County Department of Park and Planning of the Maryland-National Capital Park and Planning Commission, and may not be copied or reproduced without written permission from M-NCPPC.

Property lines are compiled by adjusting the property lines to topography created from aerial photography and should not be interpreted as actual field surveys. Planimetric features were compiled from 1:14400 scale aerial photography using stereo photogrammetric methods.

This map is created from a variety of data sources, and may not reflect the most current conditions in any one location and may not be completely accurate or up to date. All map features are approximately within five feet of their true location. This map may not be the same as a map of the same area plotted at an earlier time as the data is continuously updated. Use of this map, other than for general planning purposes, is not recommended. - Copyright 1998

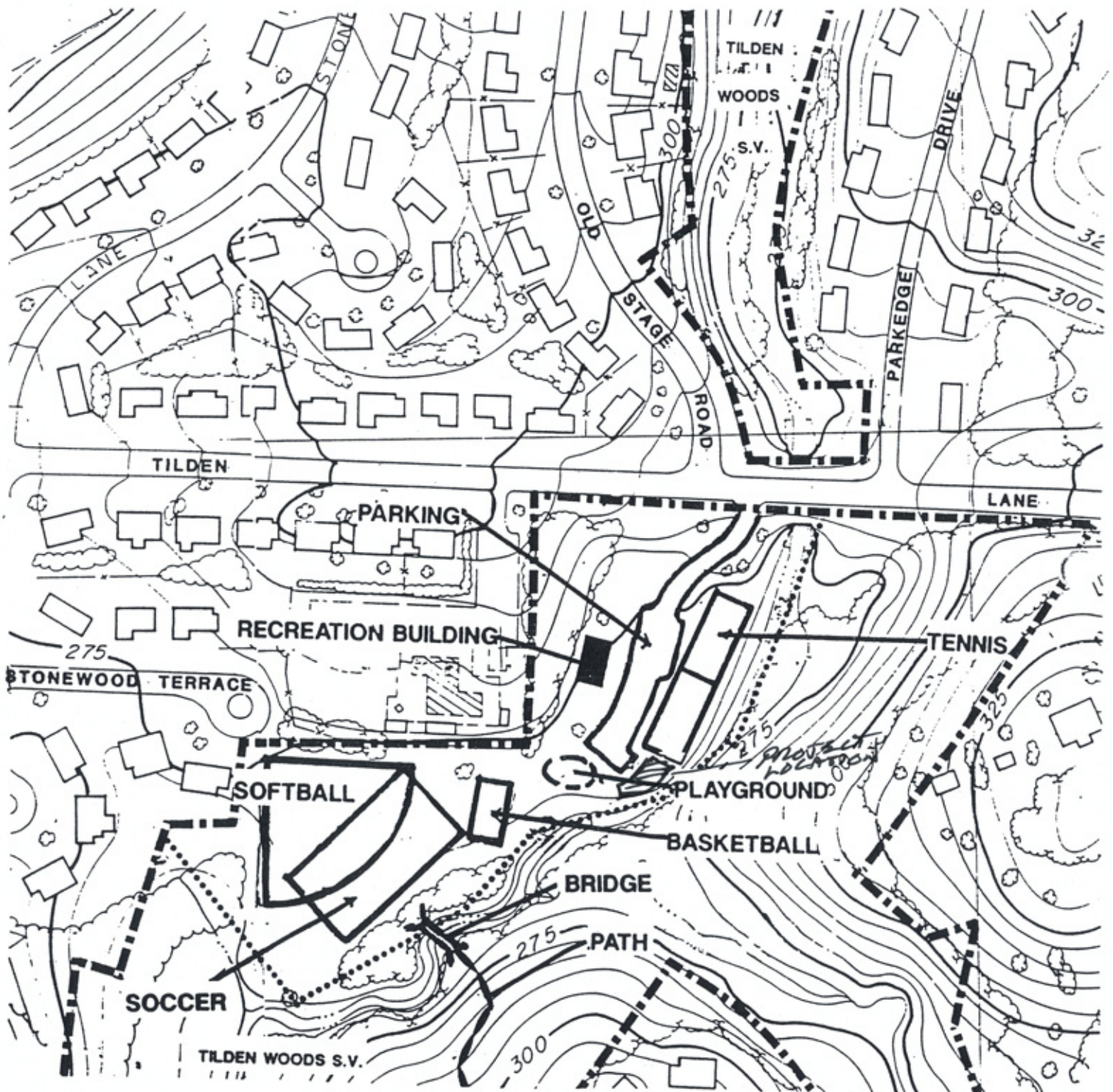
MONTGOMERY COUNTY DEPARTMENT OF PARK AND PLANNING
THE MARYLAND-NATIONAL CAPITAL PARK AND PLANNING COMMISSION
3787 Georgia Avenue - Silver Spring, Maryland 20910-3700

Key Map



TILDEN WOODS L.P.

6800 TILDEN LANE, POTOMAC



MNCPPC STAFF GUIDE 32-1D

SCALE 1" = 200'

	ACREAGE	7.0	REGION II, AREA D
	FACILITY CODE	E12	