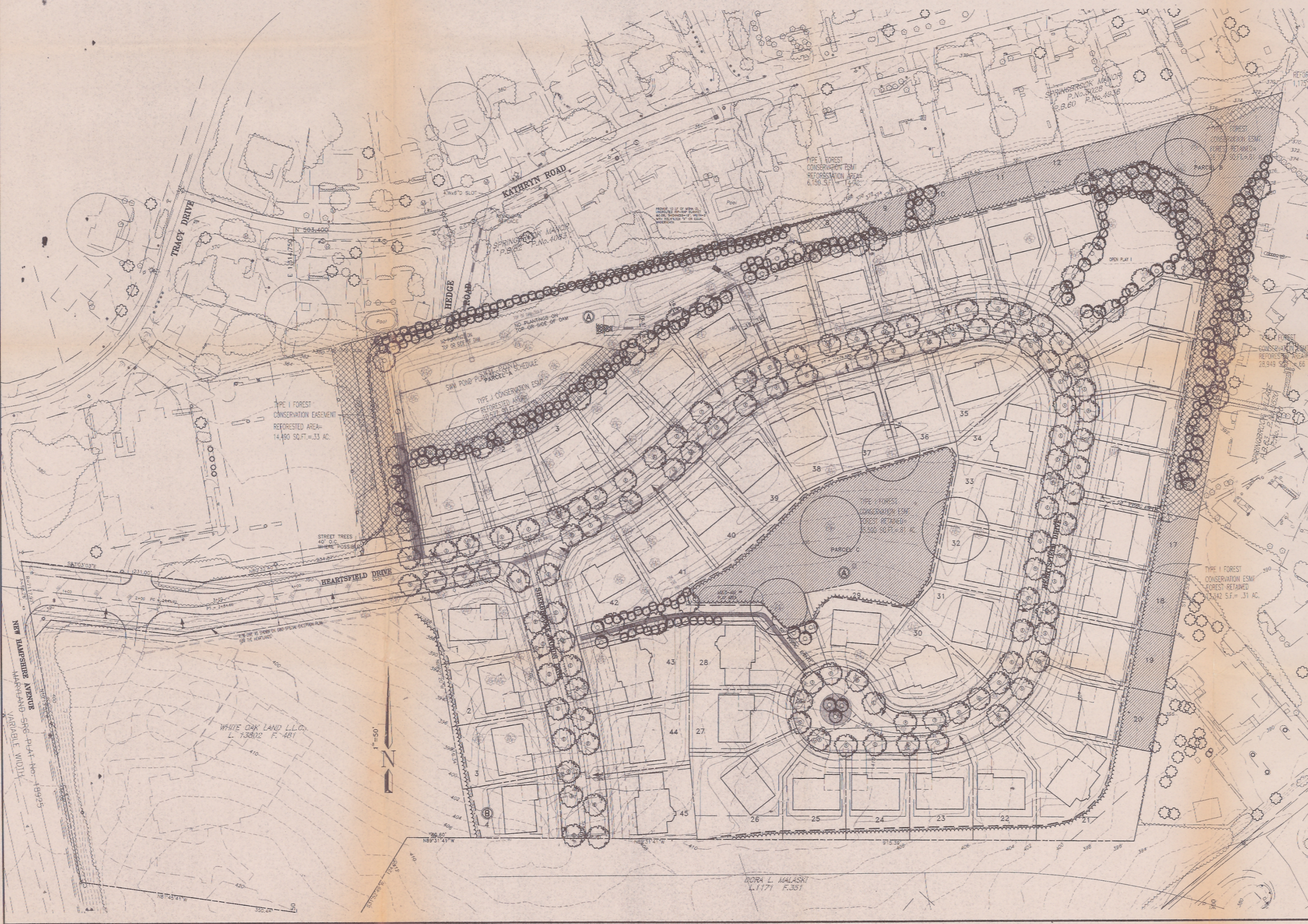
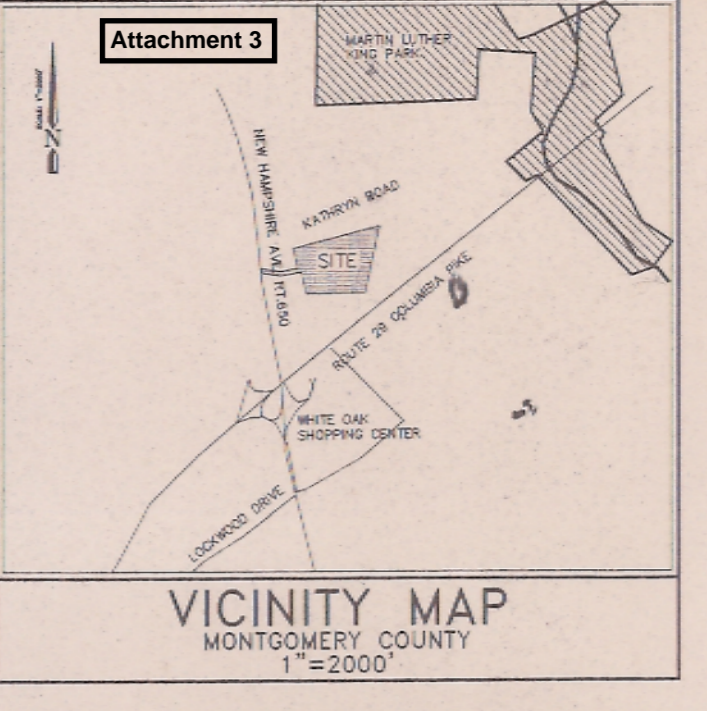
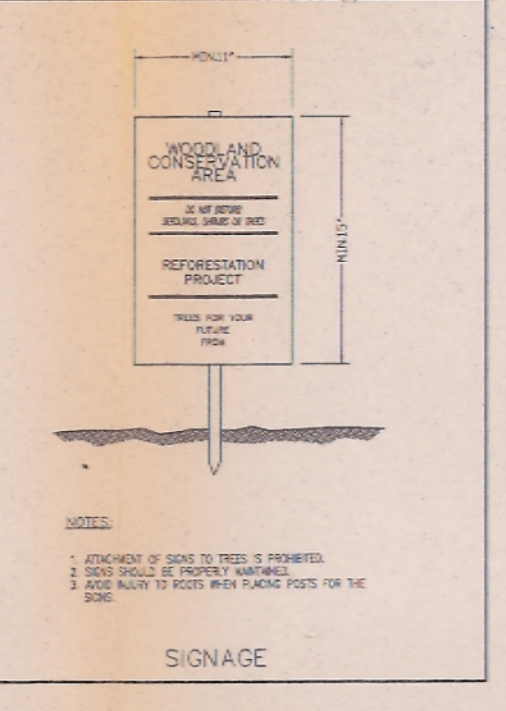
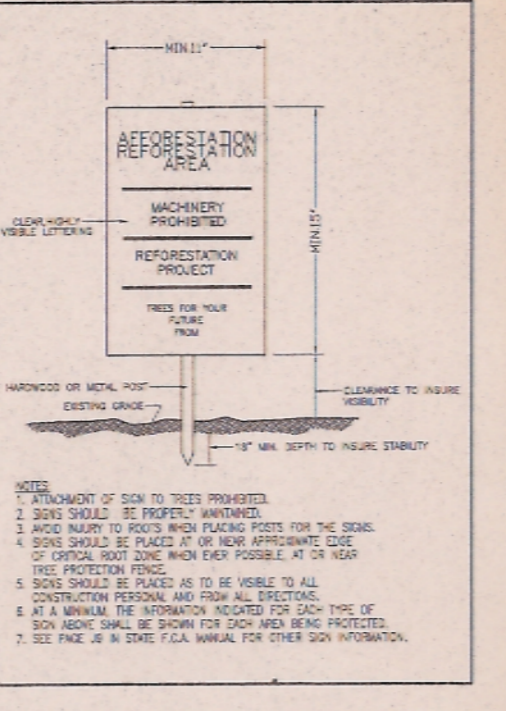
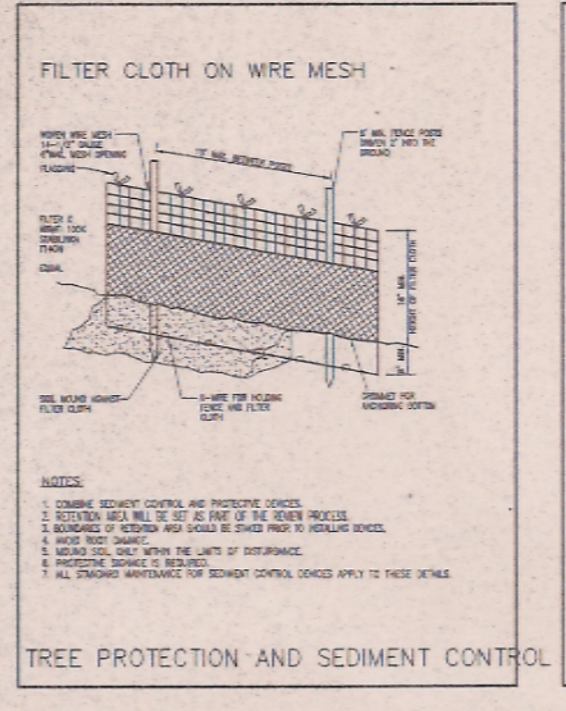
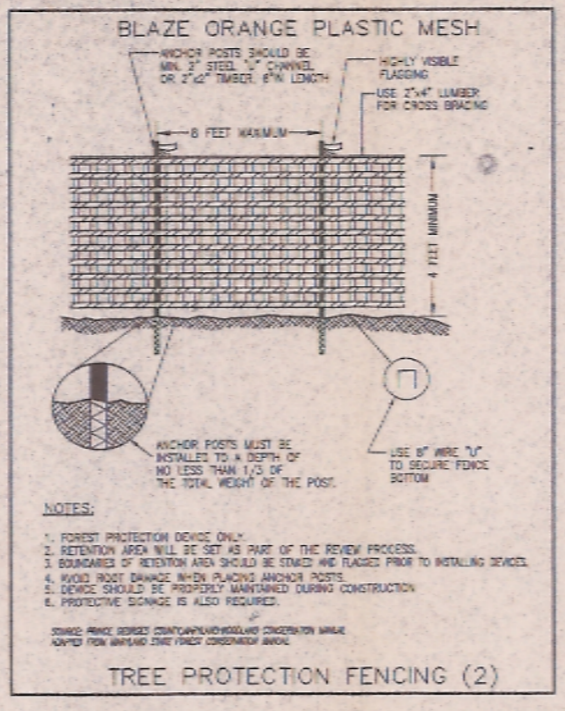
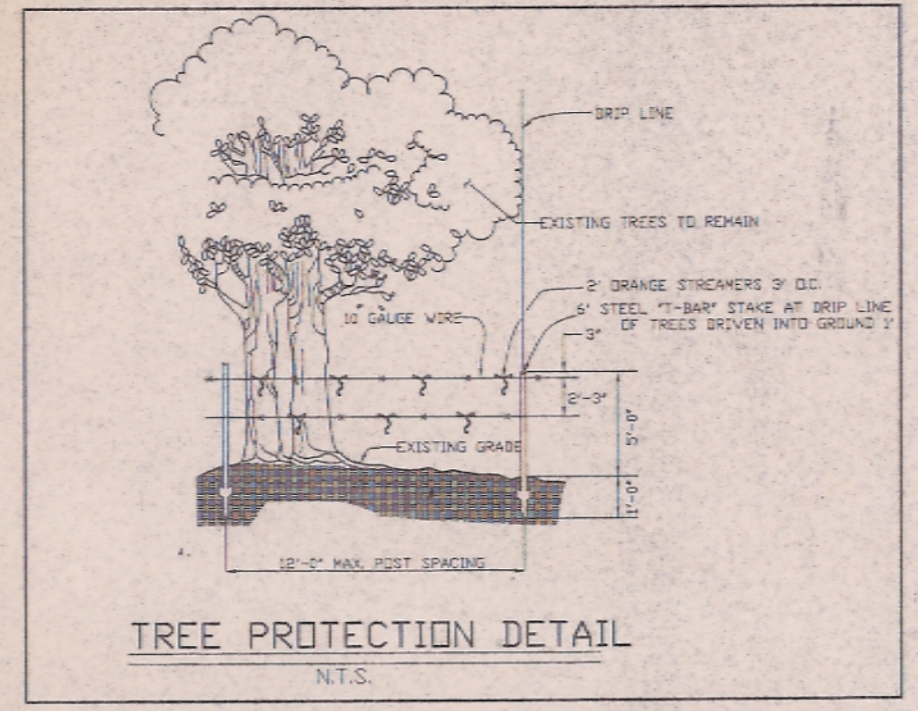


STORM WATER MANAGEMENT POND PLANTINGS

REFORESTATION (PARCEL A) - 69 acres @ 200 plants / acre = 138 trees plus 46 shrubs

QTY	SCIENTIFIC NAME	COMMON NAME	SIZE
42	Acer rubrum	Red maple	1" cal. 5 gal. cont.
14	Aronia arbutifolia	Red chokeberry	5 gal. cont. 2'-3" high
16	Cornus amomum	Silky dogwood	5 gal. cont. 2'-3" high
30	Fraxinus pennsylvanica	Green Ash	1" cal. 5 gal. cont.
40	Liquidambar styraciflua	Tulip poplar	1" cal. 5 gal. cont.
14	Liquidambar styraciflua	Sweet gum	1" cal. 5 gal. cont.
14	Nyssa sylvatica	Black gum	1" cal. 5 gal. cont.
16	Viburnum dentatum	Southern arrowwood	5 gal. cont. 2'-3" high

- TREE PROTECTION OR REFORESTATION SIGN
- REFORESTATION AREAS 1" STOCK (NATIVE SPECIES ONLY)
- FOREST TO BE RETAINED
- LANDSCAPE STOCK 2 1/2" CAL. SEE LANDSCAPE PLAN FOR SPECS.
- TREE PROTECTION FENCE & SEDIMENT CONTROL
- CRITICAL ROOT ZONES OF TREES 24" OR GREATER



- Quercus rubra - Red oak
25' 100' canopy coverage
30' diameter (70' S.F.)
91 Trees along Heartfield Drive (Total area = 87,542 S.F. or 2.01 ac.)
- Acer saccharum 'Bottle' - Sugar Maple
25' 100' canopy coverage
30' diameter (70' S.F.)
19 Trees along Sherbrooke Woods Lane (Total area = 13,433 S.F. or .31 ac.)

BOTH SPECIES APPROVED BY MDCPT AS BEING USED AS MAJOR STREET TREES.
SPECIES DESIGNATED ARE FAIRLY TOLERANT TO SOILING SALTS AND POLLUTANTS.

Handwritten note: No final FIP for MDCPT staff review + add road, proposed language

NOTE: APPLICANT WILL PROVIDE DISBURSE TO PARK AND PLANNING (DISCLOSURE ON LOT CONSERVATION EASEMENT AND POTENTIAL PROXIMITY OF HOUSES TO THE CONSERVATION EASEMENT ON LOTS 13,14,15,20)

ITEM	DESCRIPTION	AMOUNT
A.	TOTAL AREA OF TRACT	18.0 Acres
B.	AREA WITHIN 100-YEAR FLOODPLAIN	0.0 Acres
C.	AREA OF LAND TO BE USED FOR AGRICULTURE	0.0 Acres
D.	AREA WITHIN ROW/EASEMENT FOR WHICH WSSC OR MDCPT HAS JURISDICTION	1.0 Acres
E.	NET TRACT AREA (A-B-C-D)	17.0 Acres
F.	LAND USE CATEGORY (FROM TABLE 2)	18.0 Acres
G.	AFFORESTATION THRESHOLD (L) FROM TABLE 3 + (E) =	2.0 Acres
H.	FOREST COVER TO BE RETAINED (L) FROM TABLE 3 + (E) =	1.0 Acres
I.	DISTRICT FOREST COVER =	1.0 Acres
J.	FOREST COVER ABOVE AFFORESTATION THRESHOLD (I)-(G) =	1.0 Acres
K.	FOREST COVER ABOVE CONSERVATION THRESHOLD (I)-(H) =	1.0 Acres
CALCULATION OF BREAK-EVEN POINT		
L.	IF (K < 0) AND (J > 0), BREAK-EVEN POINT EQUALS 1	0.0 Acres
M.	IF (K < 0) AND (J > 0) AND AFFORESTATION PLANTING IS REQUIRED, REFER TO 'N', BELOW	0.0 Acres
N.	IF (K > 0), BREAK-EVEN POINT EQUALS (K x 20%) ÷ (H) =	0.7 Acres
O.	TOTAL AREA OF FOREST TO BE CLEARED	16.3 Acres
CALCULATION OF REFORESTATION REQUIREMENT		
P.	AREA OF FOREST ABOVE CONSERVATION THRESHOLD TO BE CLEARED (O - K) =	15.3 Acres
Q.	AREA OF FOREST BELOW CONSERVATION THRESHOLD TO BE CLEARED (N - C) =	2.0 Acres
R.	FORESTED AREA ABOVE CONSERVATION THRESHOLD TO BE SAVED (W - P) =	0.0 Acres
T.	PLANTING REQUIRED FOR CLEARING ABOVE THRESHOLD (O ÷ 1.14) =	14.3 Acres
U.	PLANTING REQUIRED FOR CLEARING BELOW THRESHOLD (R ÷ 3) =	0.0 Acres
V.	CREDIT FOR FOREST SAVED ABOVE CONSERVATION THRESHOLD (P ÷ 3) =	5.1 Acres
W.	TOTAL REFORESTATION REQUIREMENT (T + U - V) =	19.2 Acres
TOTAL PLANTING REQUIREMENT		
X.	REFORESTATION = W	19.2 Acres
Y.	CREDIT FOR TREES AND LANDSCAPING ² = 20% x W	3.8 Acres
Z.	TOTAL FOREST PLANTING REQUIREMENT (X - Y) =	15.4 Acres
ON SITE REFORESTATION		
AA.	ON SITE REFORESTATION	1.4 Acres
BB.	OFF SITE REFORESTATION	4.4 Acres
CC.	AREA OF MULTI-USE PLAY NOT INCLUDED IN FOREST RETAINED	4.7 Acres

Handwritten calculations:

Retention: 0.61, 0.81, 0.31, 1.73 = 1.7

Planting: 0.16, 0.14, 0.24, 0.33, 1.37 = 1.4

THE MARYLAND NATIONAL CAPITAL PARK AND PLANNING COMMISSION
PRELIMINARY FOREST CONSERVATION PLAN
CONDITIONAL APPROVAL
Plan No. 98096
Candy Conway 6/22/99
(Includes above changes to work sheet)

CPJ Associates
Charles P. Johnson & Associates, Inc.
PLANNERS - ENGINEERS - LANDSCAPE ARCHITECTS - SURVEYORS
175 LITTON ROAD, SUITE 200, SILVER SPRING, MARYLAND 20908
Phone: 301-584-7000 Fax: 301-584-7000 E-mail: cpj@cpj.com

PRELIMINARY FOREST CONSERVATION PLAN
PARCEL 626
KAUFMAN PROPERTY
COLESVILLE (5th) ELECTION DISTRICT
MONTGOMERY COUNTY, MARYLAND

DESIGN	DATE	SCALE
CONCEPT	MAY 98	1"=50'
PRELIMINARY	MAY 98	1"=50'
FINAL	MAY 98	1"=50'

CLIENT: ELM STREET DEVELOPMENT
6825 TIM STREET, SUITE 201
MELDEN, VA 22101

DESIGN: LWP
DRAWN: DCL
APPROVED: [Signature]

DATE: MAY 98
SCALE: 1"=50'

SHEET 1 OF 1

FILE NO.: 28-055-28 D

Acad Dwg: 28-00/11-02/44-099/46-099/53-00/PDS