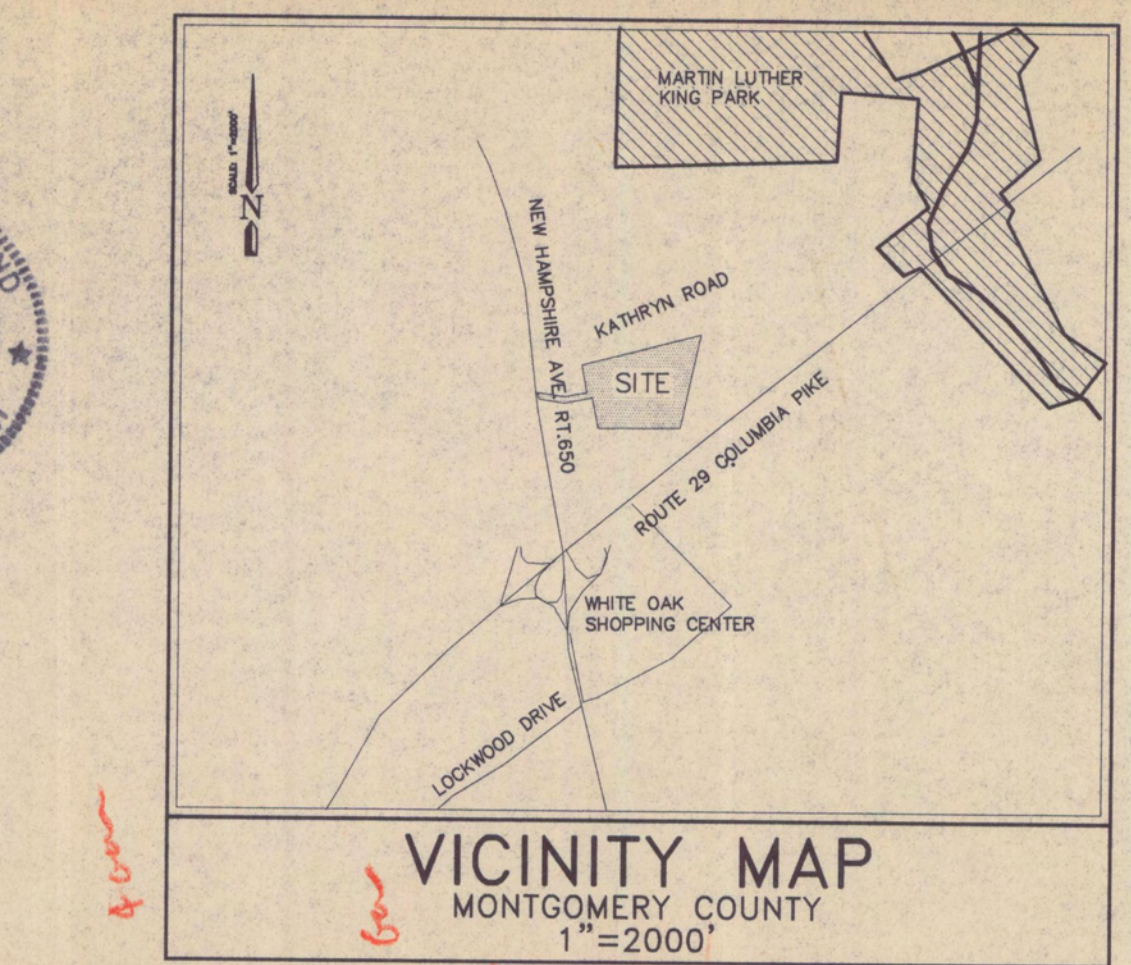
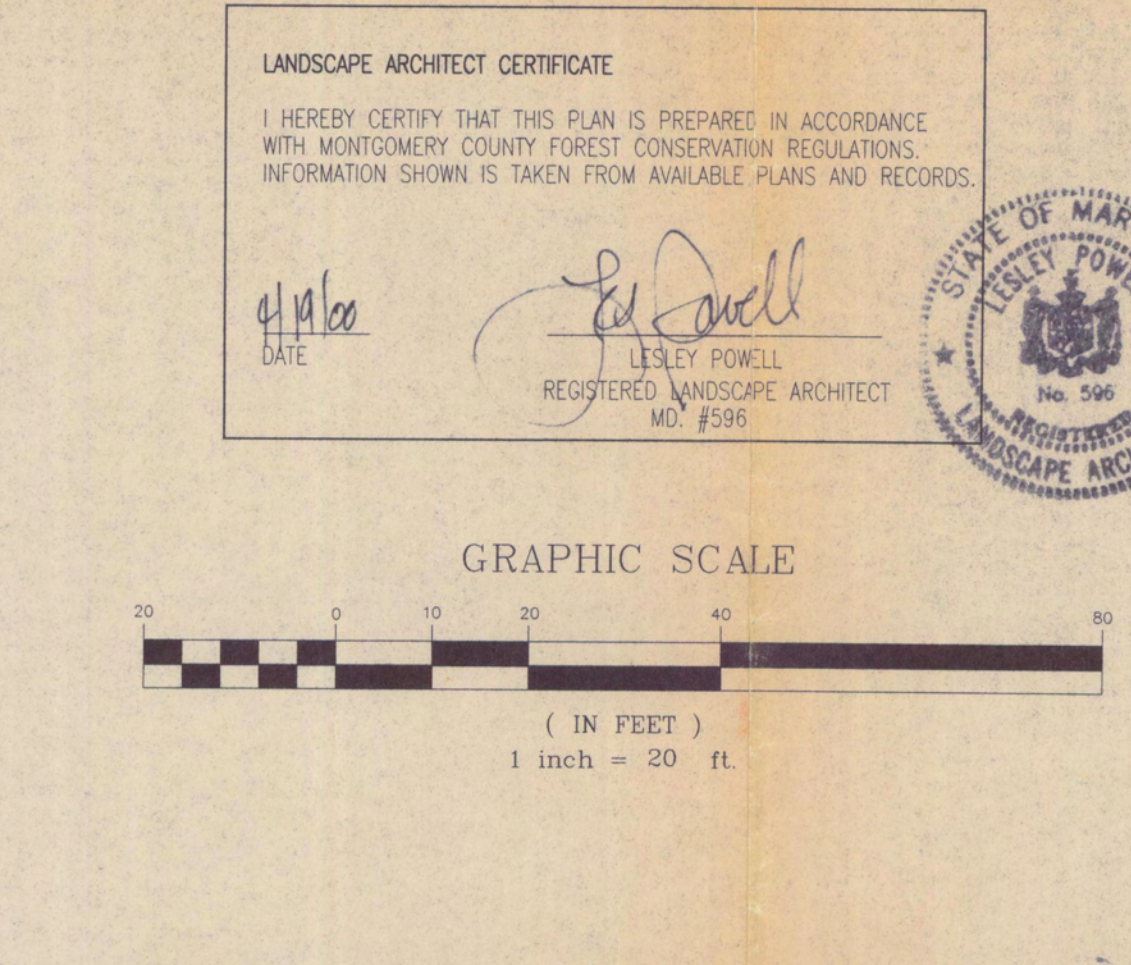
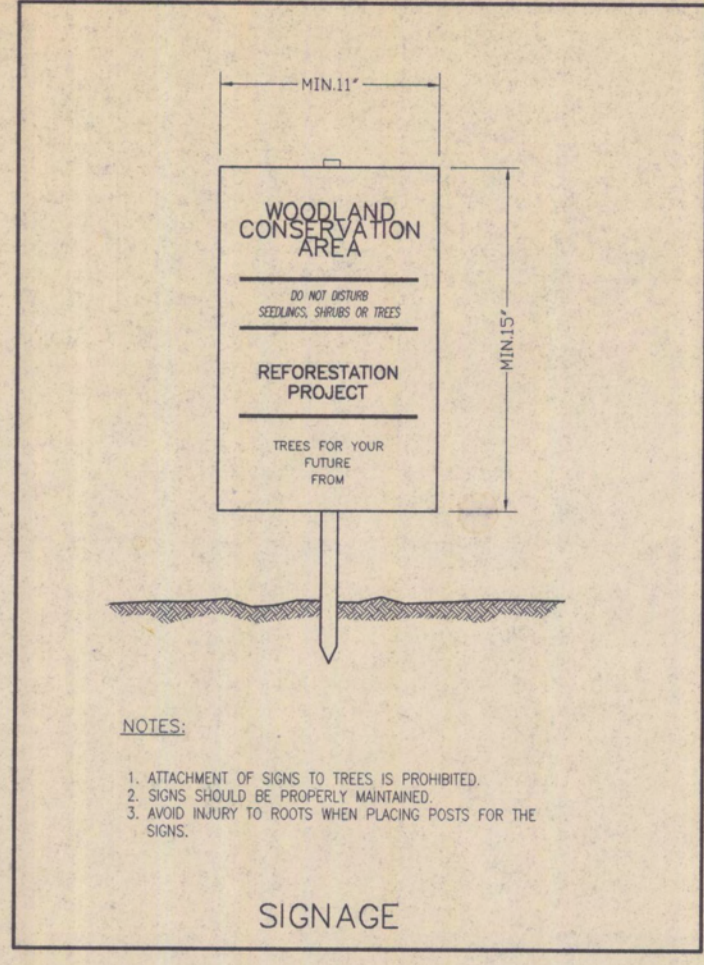
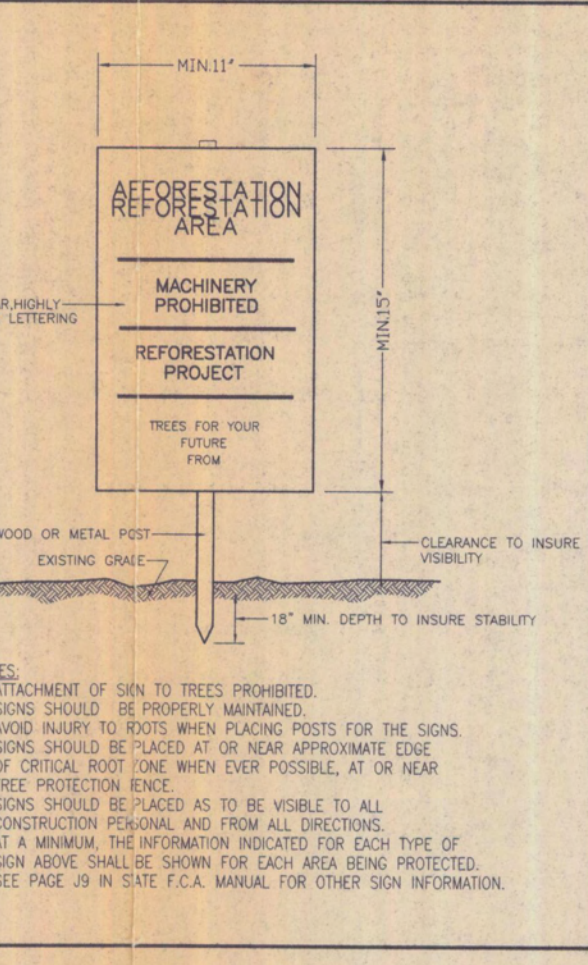
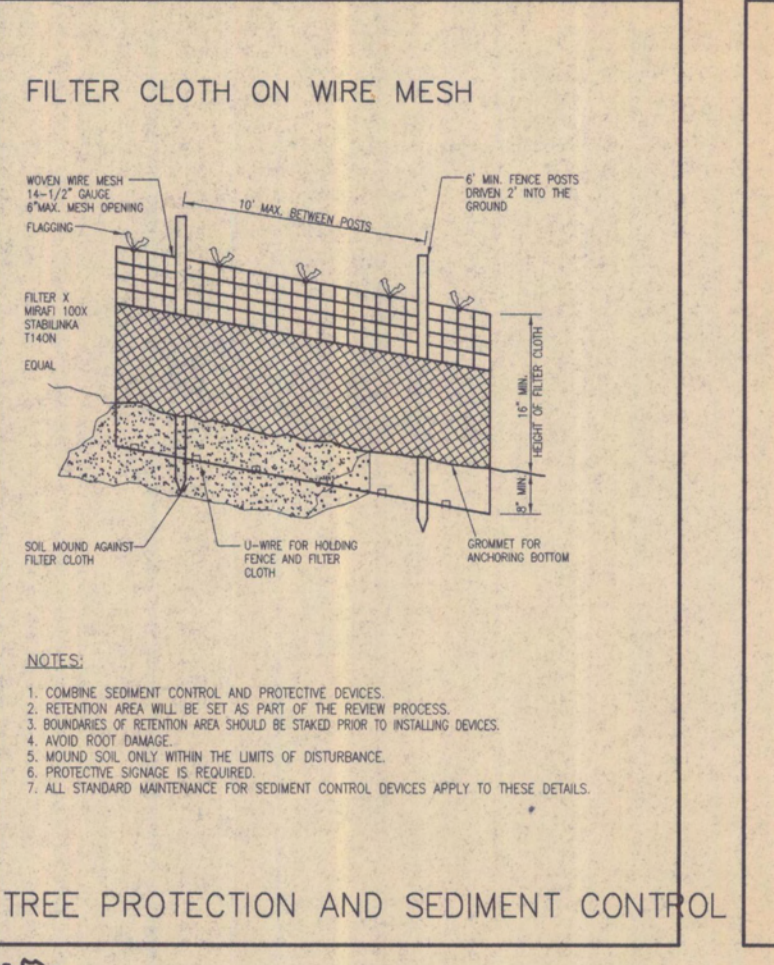
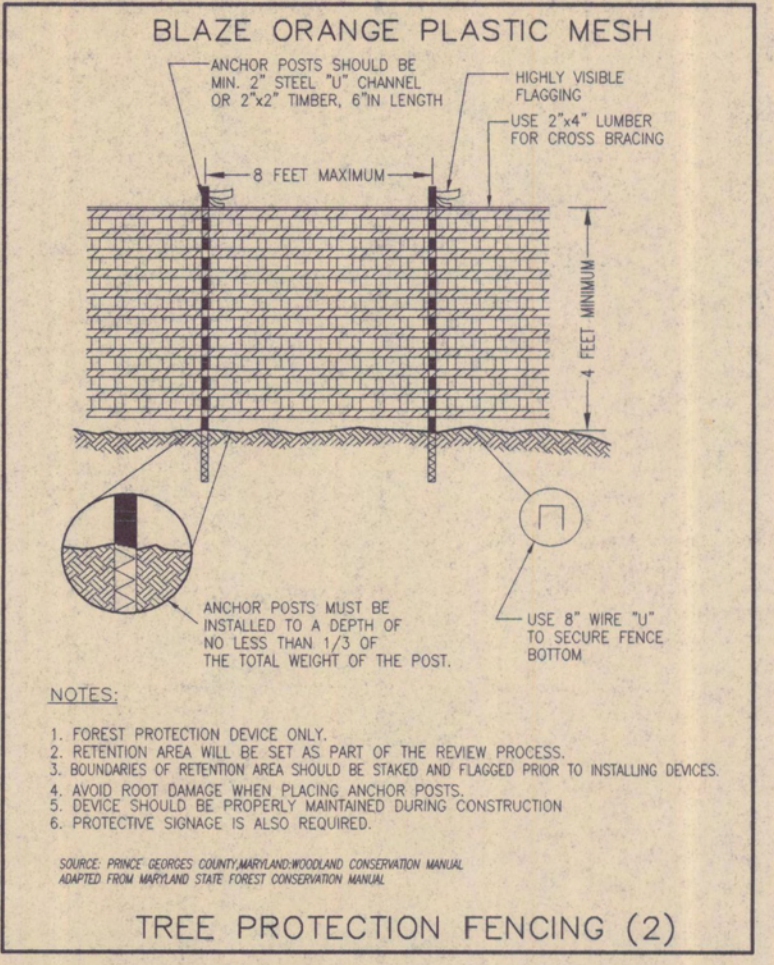
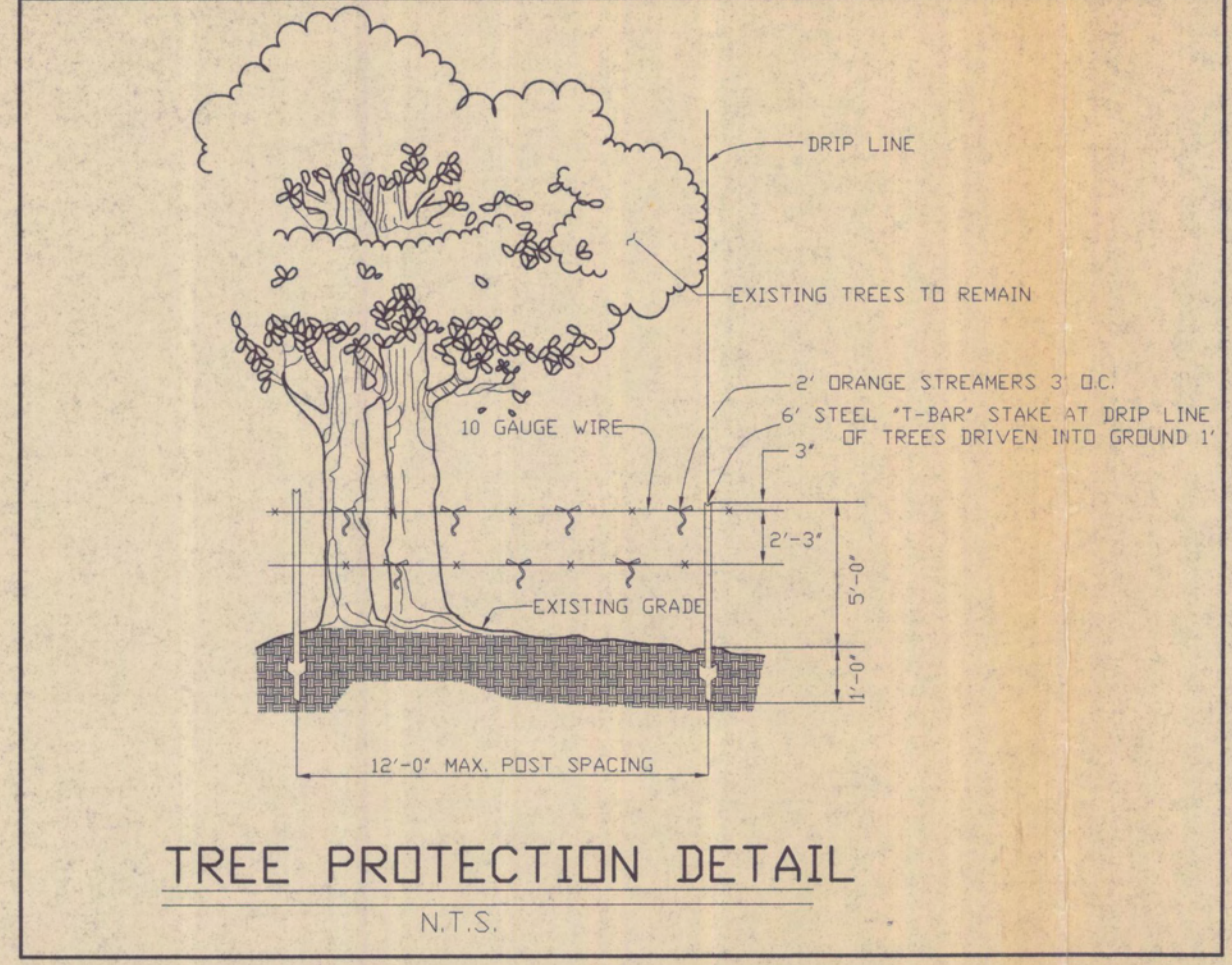


- TREE PROTECTION OR REFORESTATION SIGN
- REFORESTATION AREAS 1" STOCK (NATIVE SPECIES ONLY)
- FOREST TO BE RETAINED
- SUPPLEMENTAL PLANTING LANDSCAPE STOCK
- TREE PROTECTION FENCE & SEDIMENT CONTROL
- CRITICAL ROOT ZONES OF TREES 24" OR GREATER



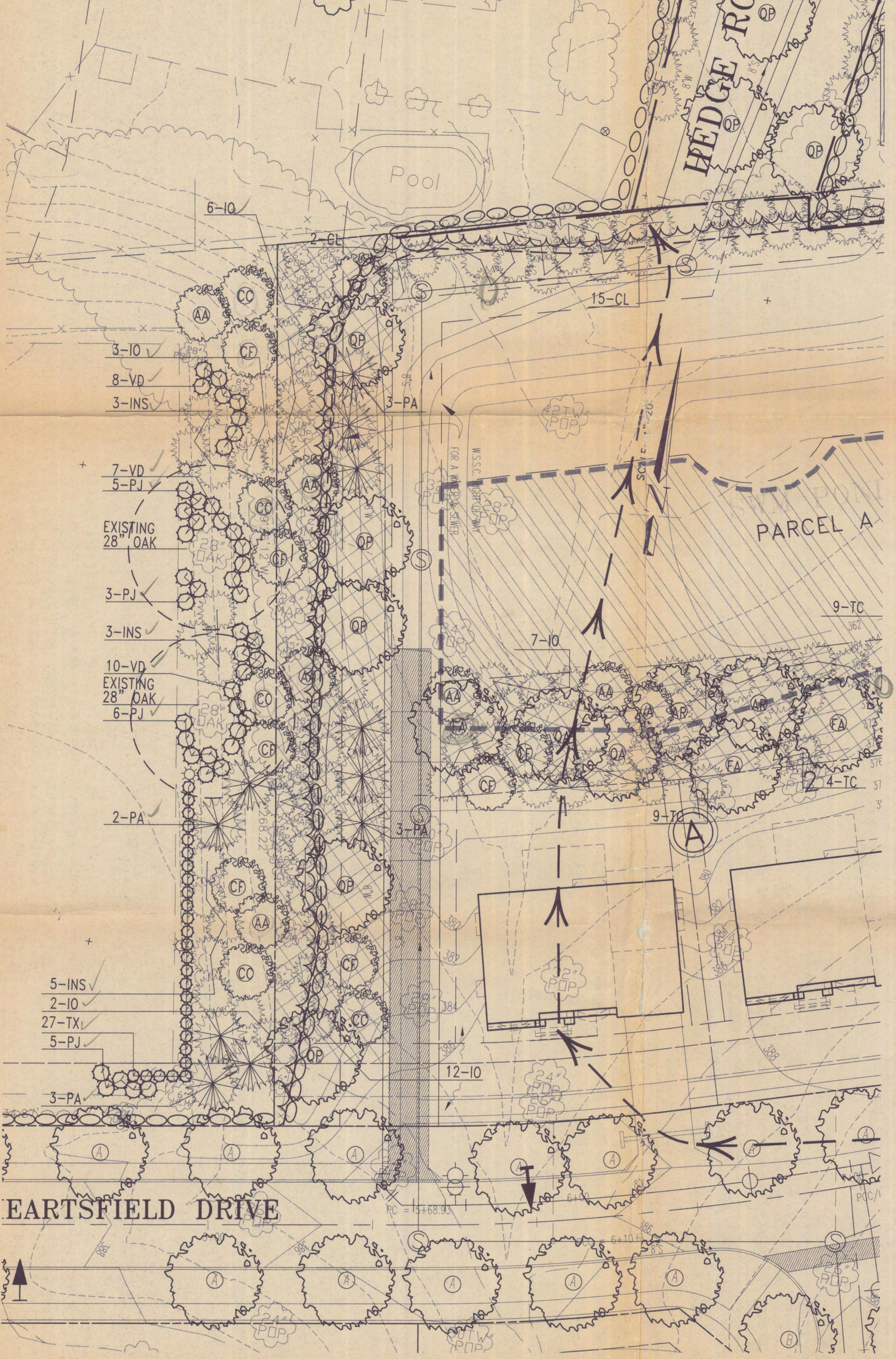
STORM WATER MANAGEMENT POND PLANTINGS

QTY.	SCIENTIFIC NAME	COMMON NAME	SIZE/SPACING	ROOT COND.
10	Quercus phellos	Willow Oak	1" caliper	5 gal. cont.
9	Amelanchier arborea	Common Shadbush	1" caliper	5 gal. cont.
4	Ilex glabra	Inkberry Holly	30"-36" high	3 gal. cont.
5	Capitatum occidentale	Buffalobush	30"-36" high	3 gal. cont.
9	Cornus amomum	Silky Dogwood	30"-36" high	3 gal. cont.
9	Ilex verticillata	Winterberry	42"-48" high	B&B
10	Liquidambar styraciflua	Sweet gum	1" caliper	B&B
10	Nyssa sylvatica	Black gum	1" caliper	B&B
10	Fraxinus pennsylvanica	Green Ash	1" caliper	B&B
9	Viburnum dentatum	Southern Arrowwood	30"-36" high	3 gal. cont.
9	Magnolia virginiana	Sweetbay Magnolia	1" cal.	5 gal. cont.

LANDSCAPE PLANTING SCHEDULE - ADJACENT TO LIBRARY

SYM.	QTY.	SCIENTIFIC NAME	COMMON NAME	SIZE	CREDIT TOWARDS LANDSCAPING
CF	3	Cornus florida	Flowering Dogwood	6"-8" high, B&B	Not applicable - spd. 12" o.c.
IO	5	Ilex opaca	American Holly	6"-8" high, B&B	Not applicable - spd. 12" o.c.
INS	11	Ilex x meserveae 'Nellie Stevens'	Nellie Stevens' Holly	6"-8" high, B&B	Not applicable - spd. 12" o.c.
TX	27	Taxus x media 'Densiformis'	Dense Yew	5 gal. cont. 36" hgt.	Not applicable - spd. 4" o.c.
PA	8	Picea abies 'Concolor'	Blue Norway Spruce	6"-8" high, B&B	Not applicable - spd. 20" o.c.
AA	2	Amelanchier arborea	Serviceberry	6"-8" high, B&B	Not applicable - spd. 10" o.c.
CC	4	Cercis canadensis	Eastern Redbud	6"-8" high, B&B	Not applicable - spd. 10" o.c.
VD	25	Viburnum dentatum	Arrowwood	5 gal. cont. 36" hgt.	Not applicable - spd. 8" o.c.
PA	19	Picea jeffersonii 'Mountain Fire'	Landscape Pine	5 gal. cont. 36" hgt.	Not applicable - spd. 8" o.c.

Quantities not reflected in the onsite planting schedule. Planting only on library property.



REFORESTATION "A" - 29 acres @ 200 plants / acre = 58 trees plus 36 shrubs

SYM.	QTY.	SCIENTIFIC NAME	COMMON NAME	SIZE	CREDIT TOWARDS LANDSCAPING
CF	3	Cornus florida	Flowering Dogwood	6"-8" high, B&B	Not applicable - spd. 12" o.c.
IO	5	Ilex opaca	American Holly	6"-8" high, B&B	Not applicable - spd. 12" o.c.
INS	11	Ilex x meserveae 'Nellie Stevens'	Nellie Stevens' Holly	6"-8" high, B&B	Not applicable - spd. 12" o.c.
TX	27	Taxus x media 'Densiformis'	Dense Yew	5 gal. cont. 36" hgt.	Not applicable - spd. 4" o.c.
PA	8	Picea abies 'Concolor'	Blue Norway Spruce	6"-8" high, B&B	Not applicable - spd. 20" o.c.
AA	2	Amelanchier arborea	Serviceberry	6"-8" high, B&B	Not applicable - spd. 10" o.c.
CC	4	Cercis canadensis	Eastern Redbud	6"-8" high, B&B	Not applicable - spd. 10" o.c.
VD	25	Viburnum dentatum	Arrowwood	5 gal. cont. 36" hgt.	Not applicable - spd. 8" o.c.
PA	19	Picea jeffersonii 'Mountain Fire'	Landscape Pine	5 gal. cont. 36" hgt.	Not applicable - spd. 8" o.c.

REFORESTATION "B" - 24 acres (Landscape stock - behind lots 1-5 blk. A)

SYM.	QTY.	SCIENTIFIC NAME	COMMON NAME	SIZE	CREDIT TOWARDS LANDSCAPING
CF	8	Cornus florida	Flowering Dogwood	1 1/2" cal. B&B	56 - 2800 - 14000
IO	18	Ilex opaca	American Holly	6"-8" high, B&B	72 - 360 - 18000
AA	8	Amelanchier arborea	Common Shadbush	1 1/2" cal. B&B	32 - 160 - 8000
IO	12	Ilex opaca	American Holly	6"-8" high, B&B	48 - 240 - 12000
TC	35	Tsuga canadensis	Eastern Hemlock	6"-8" high, B&B	140 - 700 - 35000
QA	3	Quercus alba	White Oak	2 1/2" cal. B&B	12 - 60 - 3000
FA	5	Fraxinus americana	White Ash	2 1/2" cal. B&B	20 - 100 - 5000
OP	4	Quercus palustris	Pin Oak	2 1/2" cal. B&B	16 - 80 - 4000
CL	107	Cupressocyparis leylandii	Leland Cypress	6"-8" high, B&B	428 - 2140 - 107000

REFORESTATION "C" - 18 acres (Landscape stock - behind lots 8-10 & blk. A)

SYM.	QTY.	SCIENTIFIC NAME	COMMON NAME	SIZE	CREDIT TOWARDS LANDSCAPING
CF	6	Cornus florida	Flowering Dogwood	1 1/2" cal. B&B	n/a
CL	15	Cupressocyparis leylandii	Leland Cypress	6"-8" high, B&B	n/a
AA	3	Amelanchier arborea	Common Shadbush	1 1/2" cal. B&B	n/a
IO	9	Ilex opaca	American Holly	6"-8" high, B&B	n/a
TC	15	Tsuga canadensis	Eastern Hemlock	6"-8" high, B&B	n/a
OP	1	Quercus palustris	Pin Oak	2 1/2" cal. B&B	n/a
FA	3	Fraxinus americana	White Ash	2 1/2" cal. B&B	n/a
OP	2	Quercus rubra	Red Oak	2 1/2" cal. B&B	n/a
FG	3	Fagus americana	American Beech	2 1/2" cal. B&B	n/a
CC	2	Cercis canadensis	Eastern Redbud	1 1/2" cal. B&B	n/a

REFORESTATION "D" - 68 acres (Landscape stock - Parcel B & lots 13-16 blk. A)

SYM.	QTY.	SCIENTIFIC NAME	COMMON NAME	SIZE	CREDIT TOWARDS LANDSCAPING
CF	10	Cornus florida	Flowering Dogwood	1 1/2" cal. B&B	n/a
QA	2	Quercus alba	White Oak	2 1/2" cal. B&B	n/a
AA	11	Amelanchier arborea	Common Shadbush	6"-8" high, B&B	n/a
IO	63	Ilex opaca	American Holly	6"-8" high, B&B	n/a
FG	9	Fagus grandifolia	American Beech	2 1/2" cal. B&B	n/a
VD	36	Viburnum dentatum	Southern Arrowwood	5 gal. cont. 3" high	n/a
KL	15	Kalmia latifolia	Mountain Laurel	5 gal. cont. 3" high	n/a
RM	3	Rhododendron maximum	Rhododendron	5 gal. cont. 42" high	n/a
FA	5	Fraxinus americana	White Ash	2 1/2" cal. B&B	n/a
OP	4	Quercus rubra	Red Oak	2 1/2" cal. B&B	n/a
AR	4	Acer rubrum	Red Maple	2 1/2" cal. B&B	n/a
CS	25	Cornus stolonifera	Red twig dogwood	5 gal. cont. 3" high	n/a
IV	5	Ilex verticillata	Winterberry	5 gal. cont. 3" high	n/a
CC	8	Cercis canadensis	Eastern Redbud	1 1/2" cal. B&B	n/a
AS	2	Acer saccharum	Sugar Maple	2 1/2" cal. B&B	n/a
TC	2	Tsuga canadensis	Eastern Hemlock	6"-8" high, B&B	n/a

SUPPLEMENTAL PLANTING SCHEDULE* - 31 acres

SYM.	QTY.	SCIENTIFIC NAME	COMMON NAME	SIZE	CREDIT TOWARDS LANDSCAPING
CF	14	Cornus florida	Flowering Dogwood	6"-8" high, B&B	50 s.f. each = 700 s.f. total
AR	2	Acer rubrum	Red Maple	2 1/2" cal. B&B	240 s.f. each = 480 s.f. total
AA	7	Amelanchier arborea	Common Shadbush	6"-8" high (multi-stem)	78 s.f. each = 546 s.f. total
IO	38	Ilex opaca	American Holly	6"-8" high, B&B	28 s.f. each = 1064 s.f. total
IO	8	Ilex opaca	American Holly	8"-10" high, B&B	28 s.f. each = 224 s.f. total
TC	25	Tsuga canadensis	Eastern Hemlock	6"-8" high, B&B	176 s.f. each = 4400 s.f. total
QA	5	Quercus alba	White Oak	2 1/2" cal. B&B	152 s.f. each = 760 s.f. total
FA	11	Fraxinus americana	White Ash	2 1/2" cal. B&B	104 s.f. each = 1144 s.f. total
OP	5	Quercus rubra	Red Oak	2 1/2" cal. B&B	240 s.f. each = 1,200 s.f. total
PA	9	Picea abies 'Concolor'	Blue Norway Spruce	6"-8" high, B&B	Not applicable
CC	3	Cercis canadensis	Eastern Redbud	1 1/2" cal. B&B	78 s.f. each = 234 s.f. total
OP	8	Quercus palustris	Pin Oak	2 1/2" cal. B&B	240 s.f. each = 1,920 s.f. total
FG	3	Fagus grandifolia	American Beech	2 1/2" cal. B&B	240 s.f. each = 720 s.f. total

REFORESTATION "E" - 21 acres (Landscape stock - see detail)

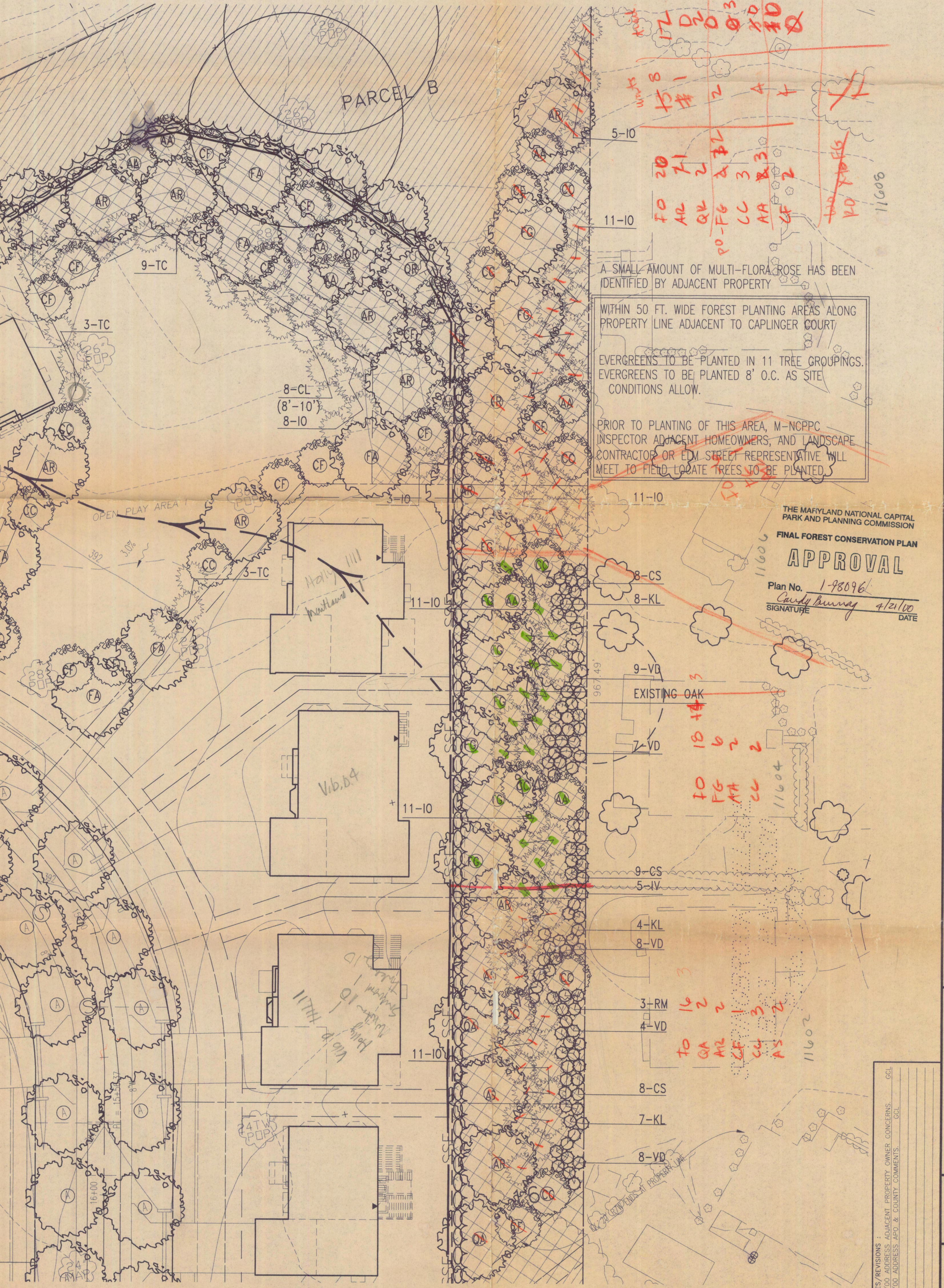
SYM.	QTY.	SCIENTIFIC NAME	COMMON NAME	SIZE	CREDIT TOWARDS LANDSCAPING
OP	5	Quercus palustris	Pin Oak	2 1/2" cal. B&B	n/a
IO	18	Ilex opaca	American Holly	6"-8" high, B&B	n/a
CF	3	Cornus florida	Flowering Dogwood	1 1/2" cal. B&B	n/a
CC	1	Cercis canadensis	Eastern Redbud	1 1/2" cal. B&B	n/a
AA	4	Amelanchier arborea	Common Shadbush	1 1/2" cal. B&B	n/a
PA	6	Picea abies 'Concolor'	Blue Norway Spruce	6"-8" high, B&B	n/a

REFORESTATION "F" - 24 acres (Landscape stock - behind lots 1-5 blk. A)

SYM.	QTY.	SCIENTIFIC NAME	COMMON NAME	SIZE	CREDIT TOWARDS LANDSCAPING
CF	8	Cornus florida	Flowering Dogwood	1 1/2" cal. B&B	56 - 2800 - 14000
IO	18	Ilex opaca	American Holly	6"-8" high, B&B	72 - 360 - 18000
AA	8	Amelanchier arborea	Common Shadbush	1 1/2" cal. B&B	32 - 160 - 8000
IO	12	Ilex opaca	American Holly	6"-8" high, B&B	48 - 240 - 12000
TC	35	Tsuga canadensis	Eastern Hemlock	6"-8" high, B&B	140 - 700 - 35000
QA	3	Quercus alba	White Oak	2 1/2" cal. B&B	12 - 60 - 3000
FA	5	Fraxinus americana	White Ash	2 1/2" cal. B&B	20 - 100 - 5000
OP	4	Quercus palustris	Pin Oak	2 1/2" cal. B&B	16 - 80 - 4000
CL	107	Cupressocyparis leylandii	Leland Cypress	6"-8" high, B&B	428 - 2140 - 107000

REFORESTATION "G" - 18 acres (Landscape stock - behind lots 8-10 & blk. A)

SYM.	QTY.	SCIENTIFIC NAME	COMMON NAME	SIZE	CREDIT TOWARDS LANDSCAPING
CF	6	Cornus florida	Flowering Dogwood	1 1/2" cal. B&B	n/a
CL	15	Cupressocyparis leylandii	Leland Cypress	6"-8" high, B&B	n/a
AA	3	Amelanchier arborea	Common Shadbush	1 1/2" cal. B&B	n/a
IO	9	Ilex opaca	American Holly	6"-8" high, B&B	n/a
TC	15	Tsuga canadensis	Eastern Hemlock	6"-8" high, B&B	n/a
OP	1	Quercus palustris	Pin Oak	2 1/2" cal. B&B	n/a
FA	3	Fraxinus americana	White Ash	2 1/2" cal. B&B	n/a
OP	2	Quercus rubra	Red Oak	2 1/2" cal. B&B	n/a
FG	3	Fagus americana	American Beech	2 1/2" cal. B&B	n/a
CC	2	Cercis canadensis	Eastern Redbud	1 1/2" cal. B&B	n/a



Charles P. Johnson & Associates, Inc.
 PLANNERS - ENGINEERS - LANDSCAPE ARCHITECTS - SURVEYORS
 175 ELLIOTT ROAD, SUITE 200, SUITE SPRING, MARYLAND 20854
 PHONE: 301-278-7000 FAX: 301-278-7001
 E: cpjohnson@aol.com P: 301-278-7001

CPJ Associates

FINAL FOREST CONSERVATION DETAIL SHEET
 PARCEL 626
KAUFMAN PROPERTY
 COLESVILLE (5th) ELECTION DISTRICT
 MONTGOMERY COUNTY, MARYLAND

FSD #4-98251
PP #1-98096

APPROVAL
 THE MARYLAND NATIONAL CAPITAL PARK AND PLANNING COMMISSION
 Plan No. 1-98096
 Signature: [Signature] DATE: 4/21/00

RECOMMENDED PLANTINGS BEHIND LOTS 13-15 BLK. A

