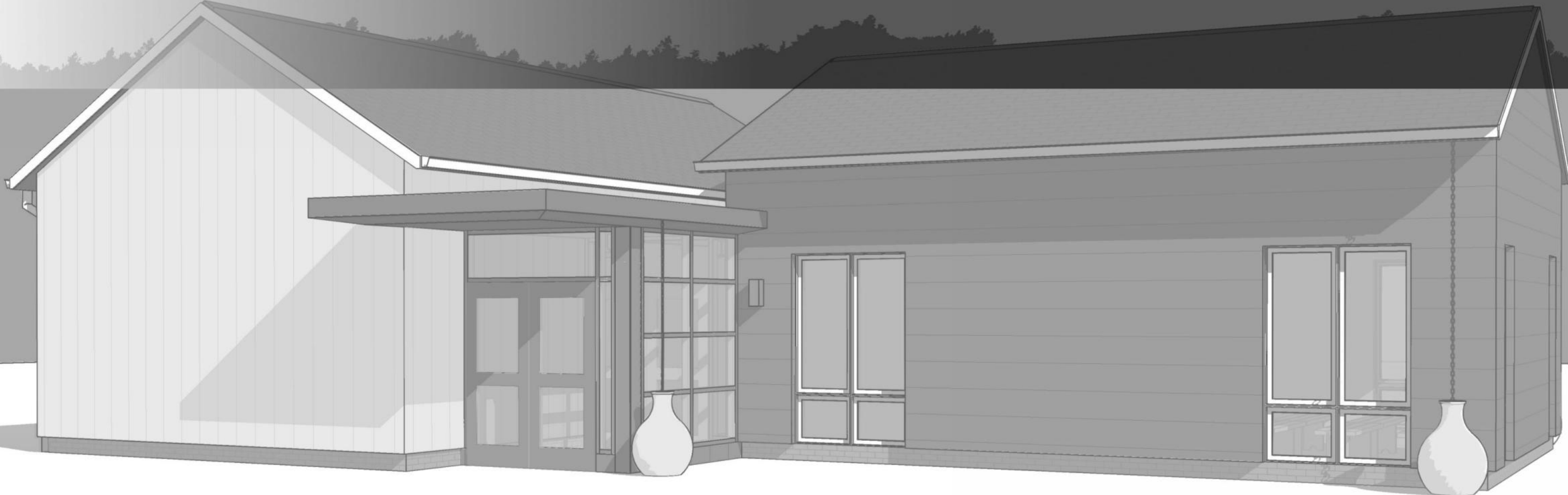
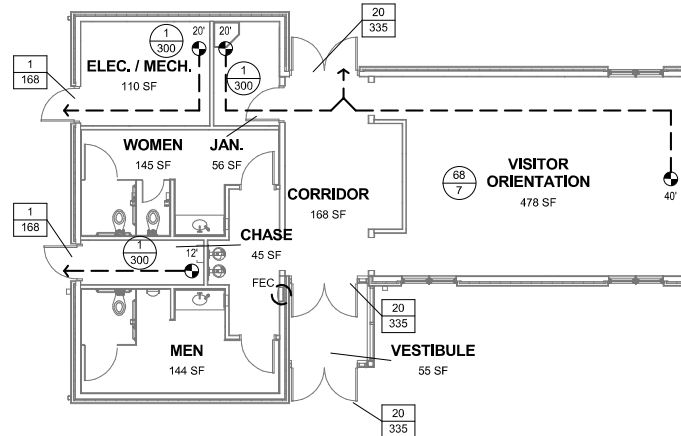


VISITOR ORIENTATION BUILDING





2 002 FIRST FLOOR PLAN - VISITOR CENTER  
SCALE: 1/8" = 1'-0"

**CODE SHEET LEGEND**

	USE GROUP/ CONSTRUCTION TYPE
	NUMBER OF OCCUPANTS TABLE 1004.1.1 CRITERIA
	CAPACITY REQUIRED
	CAPACITY PROVIDED
	TRAVEL DISTANCE TO EXIT
	CHOICE EXERCISED IN TRAVEL DISTANCE
	FIRE EXTINGUISHER
	FIRE EXTINGUISHER CABINET
	SMOKE BARRIER
	ONE HOUR PARTITION/ WALL
	TWO HOUR PARTITION/ WALL
	THREE HOUR PARTITION/ WALL
	1 HOUR RATED FLOOR/ CEILING
	2 HOUR RATED FLOOR/ CEILING
1018.1	SPECIFIC CODE CITATION

	OCCUPANTS		WC / U		LAVATORIES		REMARKS
	M	F	M	F	M	F	
FIRST FLOOR	35	35	2	2	1	1	

2012 IBC TYPE II-B CONSTRUCTION (SPRINKLERED)					
ITEM OF CONSTRUCTION	RATING	CONSTRUCTION	DOOR	CITATION	REMARKS
PRIMARY STRUCTURAL FRAME	0	HORIZONTAL ASSEMBLY	N/A	T601	
FLOOR CONSTRUCTION	0	HORIZONTAL ASSEMBLY	N/A	T601	
ROOF CONSTRUCTION	0	HORIZONTAL ASSEMBLY	N/A	T601	
EXTERIOR BEARING WALLS	0	EXTERIOR WALL	0	T601	
INTERIOR BEARING PARTITIONS	0		0	T601	
FIRE WALLS		FIRE WALL		T706.4	
NON-BEARING EXTERIOR WALLS				T602	
NON-BEARING INTERIOR PARTITIONS	0		0	T601	
CORRIDOR PARTITIONS	0	FIRE PARTITION	0	T1018.1	
OPEN STAIRS	0		0	1021	
STAIR TOWERS	1	FIRE BARRIER	60	1022.2	2 HOURS; 4 STORIES OR MORE
ELEVATOR SHAFTS	1	FIRE BARRIER	60	713.4	2 HOURS; 4 STORIES OR MORE
SHAFT ENCLOSURES	1	FIRE BARRIER	60	713.4	2 HOURS; 4 STORIES OR MORE
OCCUPANCY SEPARATIONS		FIRE BARRIER		T508.4	
FIRE AREA SEPARATIONS		FIRE BARRIER		T707.3.10	
INCIDENTAL SEPARATIONS					
MECHANICAL ROOM	0		0	T509	
LAUNDRY ROOM	0		0	T509	
ELECTRICAL ROOM	0		0	T509	
WASTE / LINEN ROOM	0		0	T509	
FIRE PUMP ROOM	1	FIRE BARRIER	45	T509	
ELEVATOR EQUIPMENT	1	FIRE BARRIER	60	3006.4	

NOT FOR CONSTRUCTION

**lscdesign**  
architects engineers

1110 East Princess St  
York, Pennsylvania 17403  
t: 717.845.8383  
f: 717.852.0916

DESIGN		
Landscape Architect	Date	Checked By:
Architect	Date	Checked By:
Engineer	Date	Checked By:
Drawn by	Date	Checked By:

Professional Certification . I hereby certify that these documents were prepared or approved by me, and that I am a duly licensed professional engineer under the laws of the State of Maryland.

License No. \_\_\_\_\_  
Expiration Date \_\_\_\_\_



The Maryland-National Capital  
Park and Planning Commission  
Montgomery County Department of Parks  
9500 Brunett Avenue  
Silver Spring, Maryland 20901  
(301) 495-2535

REVIEW AND APPROVAL		
Project Manager	Date	
Construction Manager	Date	
Park Manager	Date	

ISSUED FOR PROCUREMENT ON _____		
REVISIONS		
Rev. No.	Date	Description

Josiah Henson Park - Facility Plan  
11420 Old Georgetown Road, Rockville, MD 20852

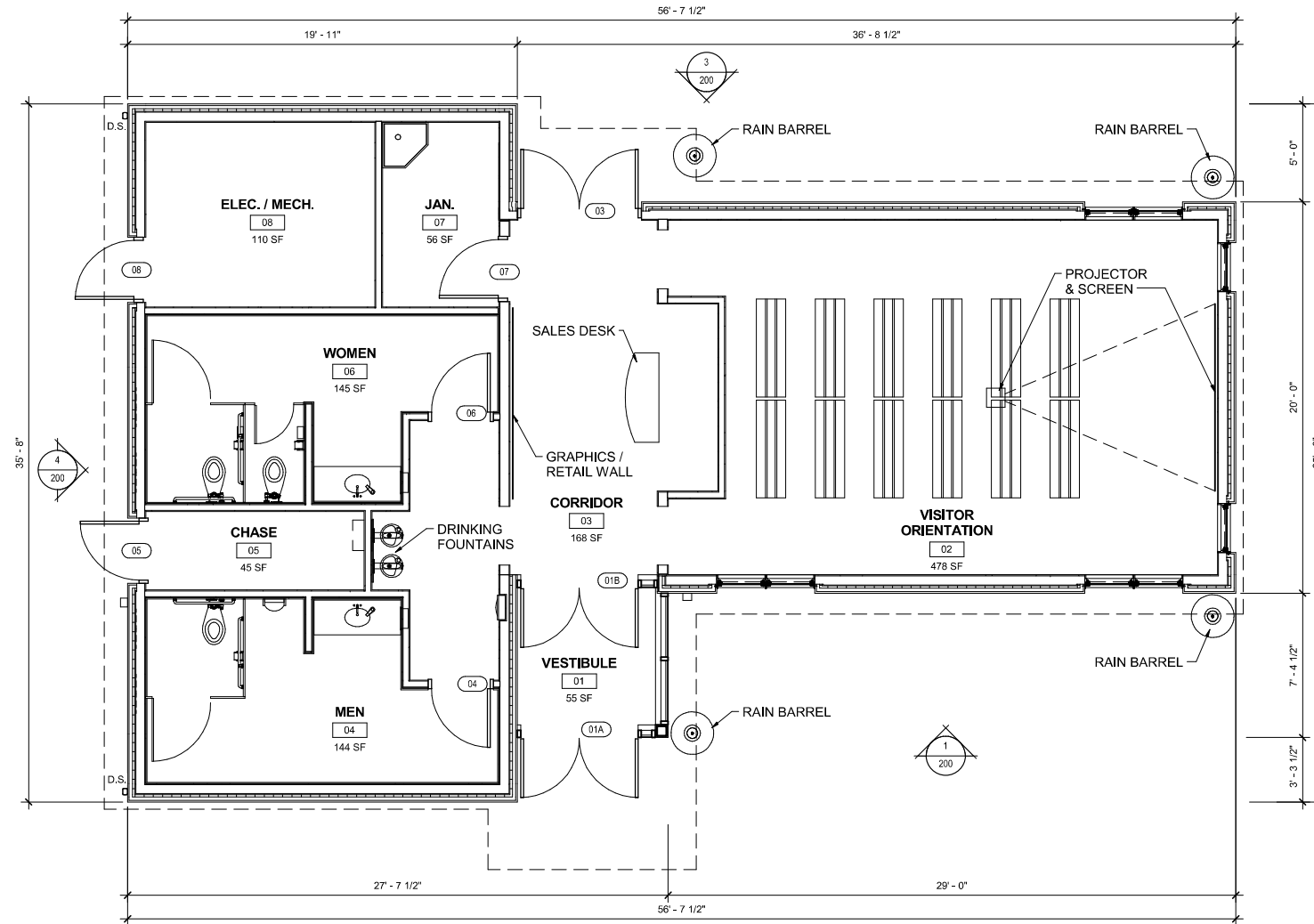
RFP #: P30-149 30% DESIGN DEVELOPMENT SCALE: AS SHOWN

CODE CRITERIA - VISITOR  
ORIENTATION

A-VOB

SHT. # 48 of 52  
MAY 28, 2013

ROOM FINISH SCHEDULE					
NUMBER	ROOM NAME	FLOOR	BASE	CEILING	REMARKS
		FINISH MATERIAL	FINISH MATERIAL	FINISH MATERIAL	
FIRST FLOOR					
01	VESTIBULE	CPT-1	VCB	WOOD PLANK	
02	VISITOR ORIENTATION	CPT-2	VCB	ACT	
03	CORRIDOR	CPT	VCB	WOOD PLANK	
04	MEN	PAINT	TILE	ACT	CODE MINIMUM TILE
05	CHASE	SEALED CONC.	--	EXPOSED	
06	WOMEN	PAINT	TILE	ACT	CODE MINIMUM TILE
07	JAN.	SEALED CONC.	VCB	EXPOSED	
08	ELEC. / MECH.	SEALED CONC.	--	EXPOSED	



1 111 FIRST FLOOR PLAN  
SCALE: 1/4" = 1'-0"

NOT FOR CONSTRUCTION

**lscdesign**  
architects engineers

1110 East Princess St  
York, Pennsylvania 17403  
t: 717.845.8383  
f: 717.852.0916

DESIGN		
Landscape Architect	Date	Checked By:
Architect	Date	Checked By:
Engineer	Date	Checked By:
Drawn by	Date	Checked By:

Professional Certification . I hereby certify that these documents were prepared or approved by me, and that I am a duly licensed professional engineer under the laws of the State of Maryland.

License No. \_\_\_\_\_

Expiration Date \_\_\_\_\_



**The Maryland-National Capital Park and Planning Commission**

Montgomery County Department of Parks  
9500 Brunnet Avenue  
Silver Spring, Maryland 20901  
(301) 495-2535

REVIEW AND APPROVAL	
Project Manager	Date
Construction Manager	Date
Park Manager	Date

ISSUED FOR PROCUREMENT ON _____		
REVISIONS		
Rev. No.	Date	Description

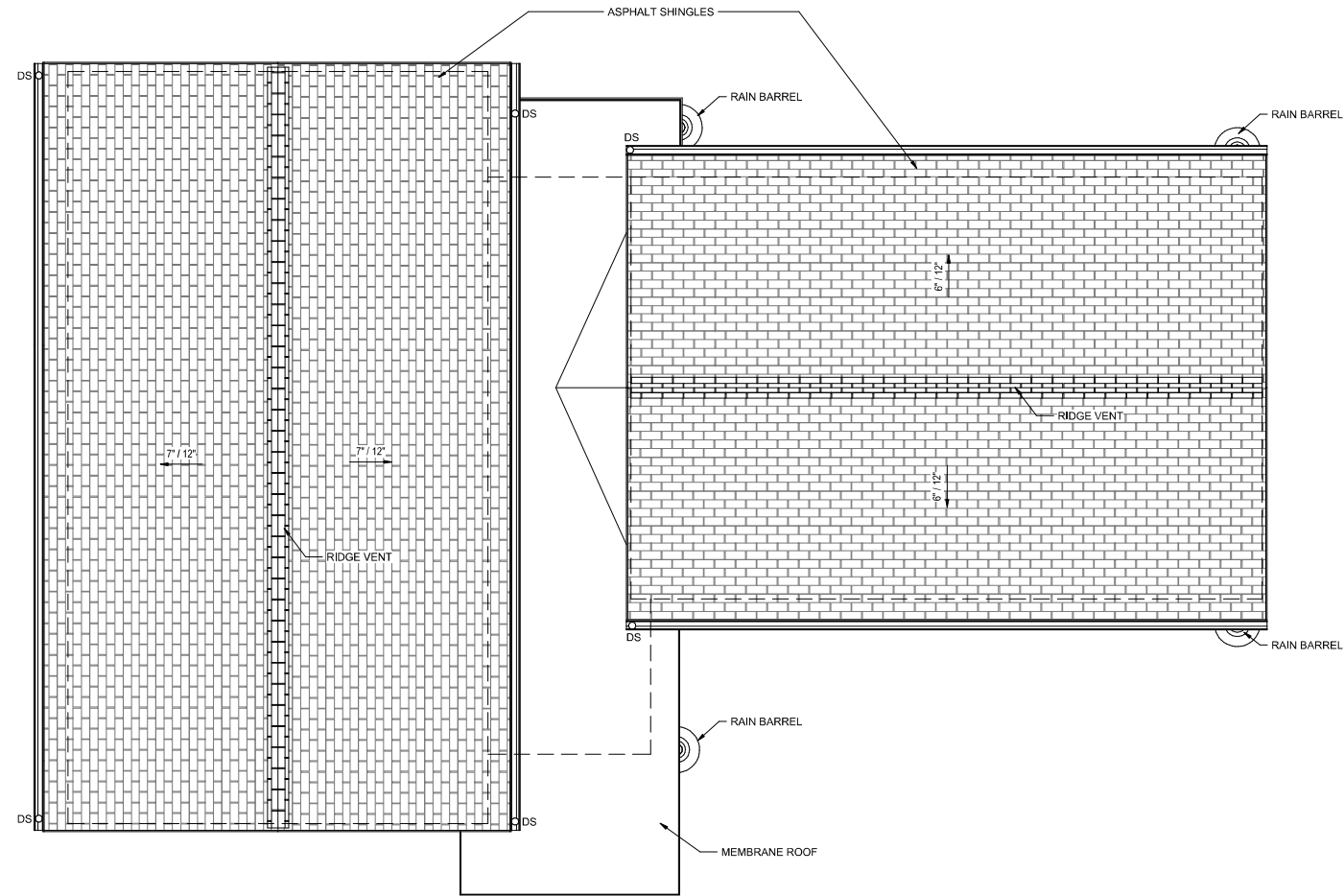
**Josiah Henson Park - Facility Plan**  
11420 Old Georgetown Road, Rockville, MD 20852

RFP #: P30-149 30% DESIGN DEVELOPMENT SCALE: AS SHOWN

**FIRST FLOOR PLAN**

**A-VOB**

SHT. # 49 of 52  
MAY 28, 2013



1  
112 ROOF PLAN  
SCALE: 1/4" = 1'-0"

NOT FOR CONSTRUCTION

**lscdesign**  
architects engineers

1110 East Princess St  
York, Pennsylvania 17403  
t: 717.845.8383  
f: 717.852.0916

DESIGN		
Landscape Architect	Date	Checked By:
Architect	Date	Checked By:
Engineer	Date	Checked By:
Drawn by	Date	Checked By:

Professional Certification . I hereby certify that these documents were prepared or approved by me, and that I am a duly licensed professional engineer under the laws of the State of Maryland.

License No. \_\_\_\_\_

Expiration Date \_\_\_\_\_



The Maryland-National Capital  
Park and Planning Commission

Montgomery County Department of Parks  
9500 Brunett Avenue  
Silver Spring, Maryland 20901  
(301) 495-2535

REVIEW AND APPROVAL	
Project Manager	Date
Construction Manager	Date
Park Manager	Date

ISSUED FOR PROCUREMENT ON _____		
REVISIONS		
Rev. No.	Date	Description

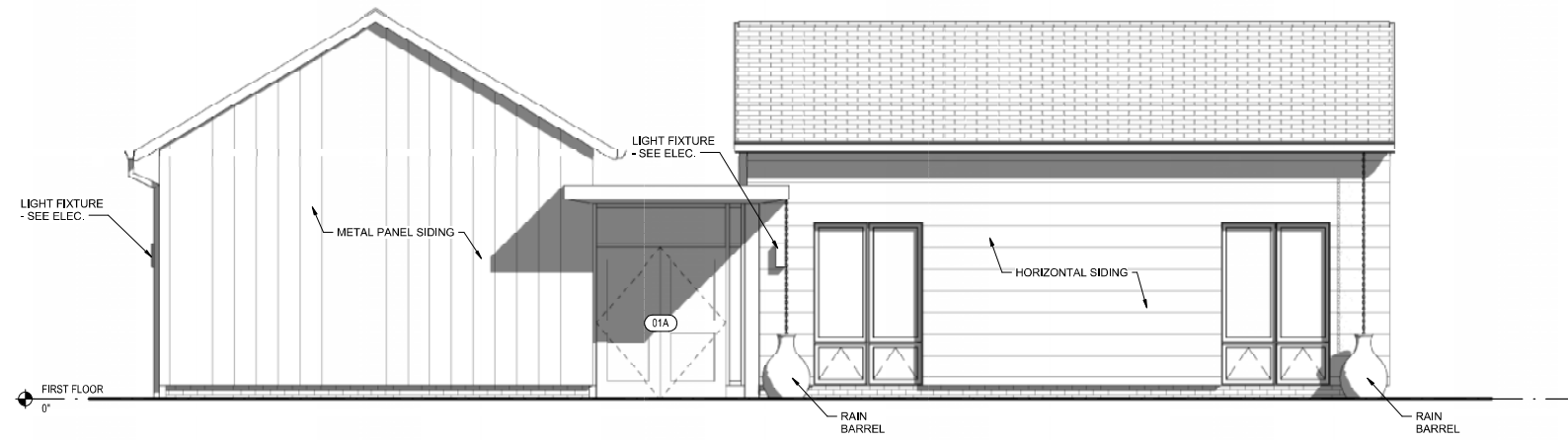
**Josiah Henson Park - Facility Plan**  
11420 Old Georgetown Road, Rockville, MD 20852

RFP #: P30-149 30% DESIGN DEVELOPMENT SCALE: AS SHOWN

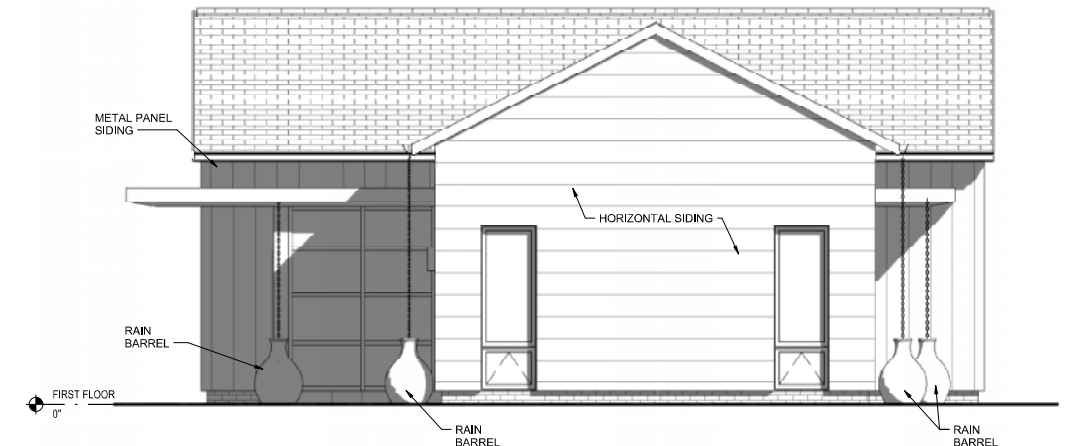
**ROOF PLAN**

**A-VOB**

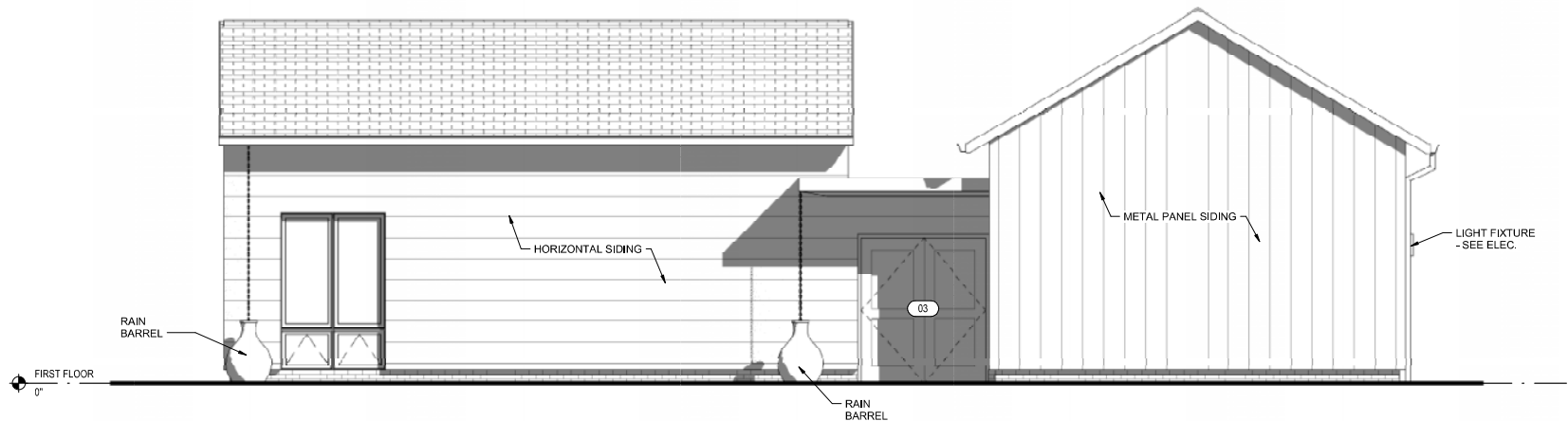
SHT. # 50 of 52  
MAY 28, 2013



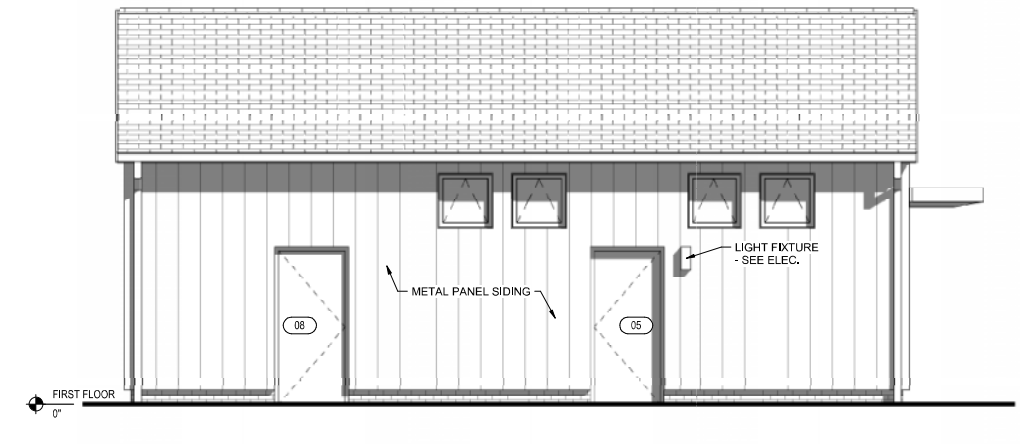
1  
200 EXTERIOR ELEVATION - EAST  
SCALE: 1/4" = 1'-0"



2  
200 EXTERIOR ELEVATION - NORTH  
SCALE: 1/4" = 1'-0"



3  
200 EXTERIOR ELEVATION - WEST  
SCALE: 1/4" = 1'-0"



4  
200 EXTERIOR ELEVATION - SOUTH  
SCALE: 1/4" = 1'-0"

NOT FOR CONSTRUCTION

**lscdesign**  
architects engineers

1110 East Princess St  
York, Pennsylvania 17403  
t: 717.845.8383  
f: 717.852.0916

DESIGN		
Landscape Architect	Date	Checked By:
Architect	Date	Checked By:
Engineer	Date	Checked By:
Drawn by	Date	Checked By:

Professional Certification. I hereby certify that these documents were prepared or approved by me, and that I am a duly licensed professional engineer under the laws of the State of Maryland.

License No. \_\_\_\_\_  
Expiration Date \_\_\_\_\_



**The Maryland-National Capital  
Park and Planning Commission**

Montgomery County Department of Parks  
9500 Brunett Avenue  
Silver Spring, Maryland 20901  
(301) 495-2535

REVIEW AND APPROVAL	
Project Manager	Date
Construction Manager	Date
Park Manager	Date

ISSUED FOR PROCUREMENT ON _____		
REVISIONS		
Rev. No.	Date	Description

**Josiah Henson Park - Facility Plan**  
11420 Old Georgetown Road, Rockville, MD 20852

RFP #: P30-149 30% DESIGN DEVELOPMENT SCALE: AS SHOWN

**EXTERIOR ELEVATIONS**

A-VOB

SHT. # 51 of 52  
MAY 28, 2013

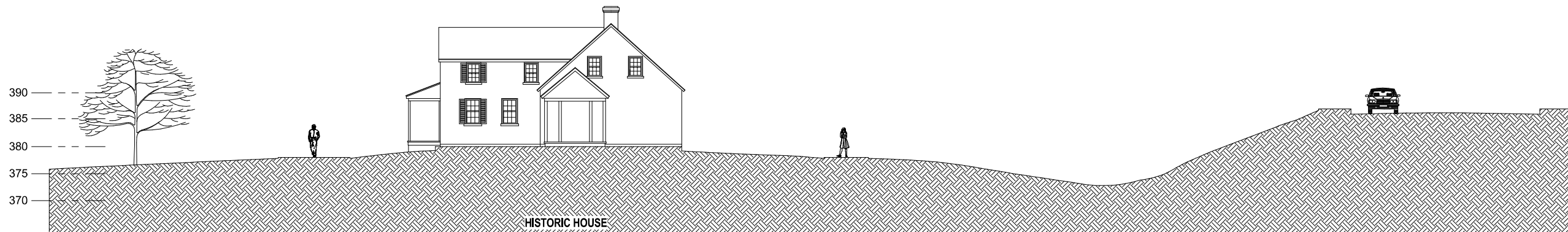
FINAL - SCANNED

PLAN - SCANNED

PARK CODE: C-0

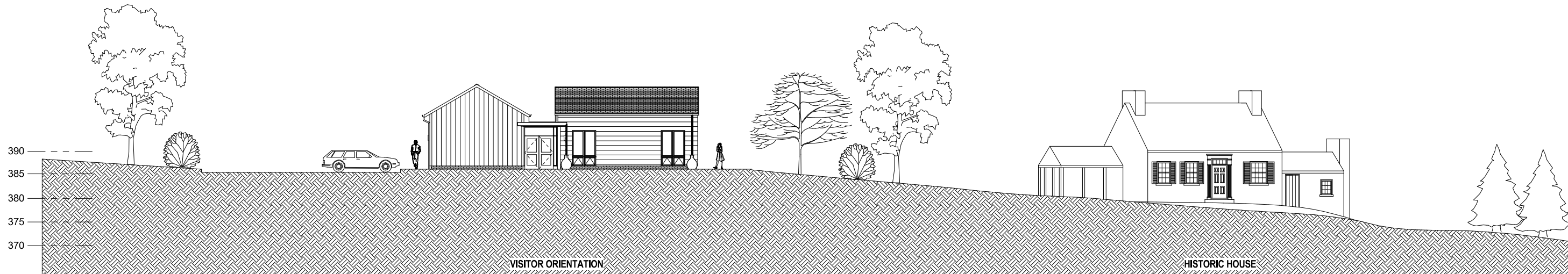
PROJECT: 11420 Old Georgetown Rd, Rockville, MD

DATE: 01/09/2013 10:44:33 AM



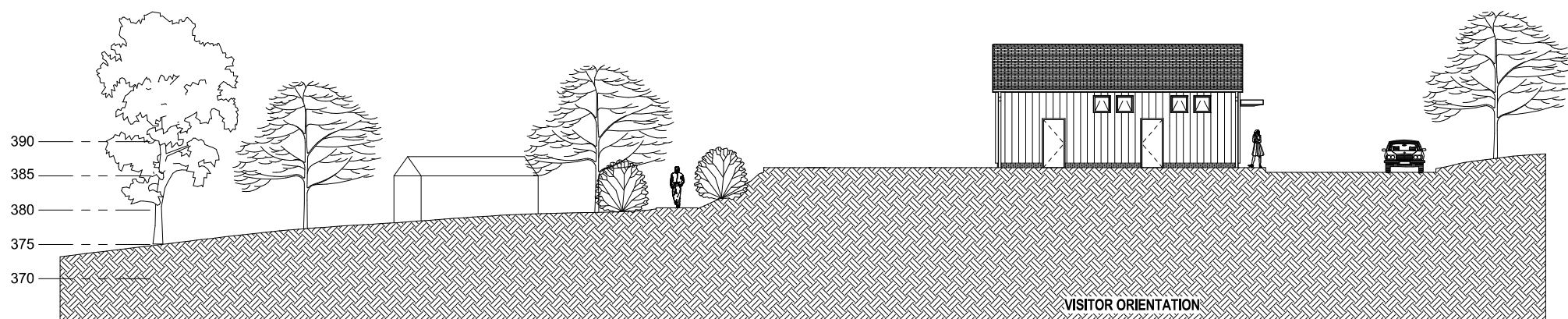
**SITE SECTION - HISTORIC HOUSE & OLD GEORGETOWN ROAD**

SCALE: 1" = 10'-0"



**SITE SECTION - NORTH / SOUTH**

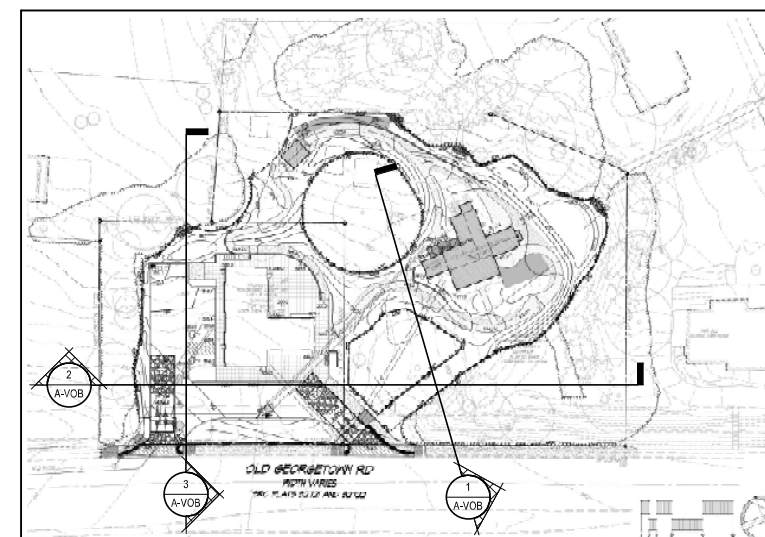
SCALE: 1" = 10'-0"



**SITE SECTION - OLD GEORGETOWN ROAD**

SCALE: 1" = 10'-0"

**KEY PLAN**



NOT FOR CONSTRUCTION

**lscdesign**  
architects engineers

1110 East Princess St  
York, Pennsylvania 17403  
t: 717.845.8383  
f: 717.852.0916

DESIGN		
Landscape Architect	Date	Checked By:
Architect	Date	Checked By:
Engineer	Date	Checked By:
Drawn by	Date	Checked By:

Professional Certification . I hereby certify that these documents were prepared or approved by me, and that I am a duly licensed professional engineer under the laws of the State of Maryland.

License No. \_\_\_\_\_  
Expiration Date \_\_\_\_\_



**The Maryland-National Capital Park and Planning Commission**  
Montgomery County Department of Parks  
9500 Brunett Avenue  
Silver Spring, Maryland 20901  
(301) 495-2535

**REVIEW AND APPROVAL**

Project Manager	Date
Construction Manager	Date
Park Manager	Date

ISSUED FOR PROCUREMENT ON _____		
REVISIONS		
Rev. No.	Date	Description

**Josiah Henson Park - Facility Plan**  
11420 Old Georgetown Road, Rockville, MD 20852

RFP #: P30-149 30% DESIGN DEVELOPMENT SCALE: AS SHOWN

**SITE SECTIONS**

**A-VOB**

SHT. # 52 of 52  
MAY 28, 2013