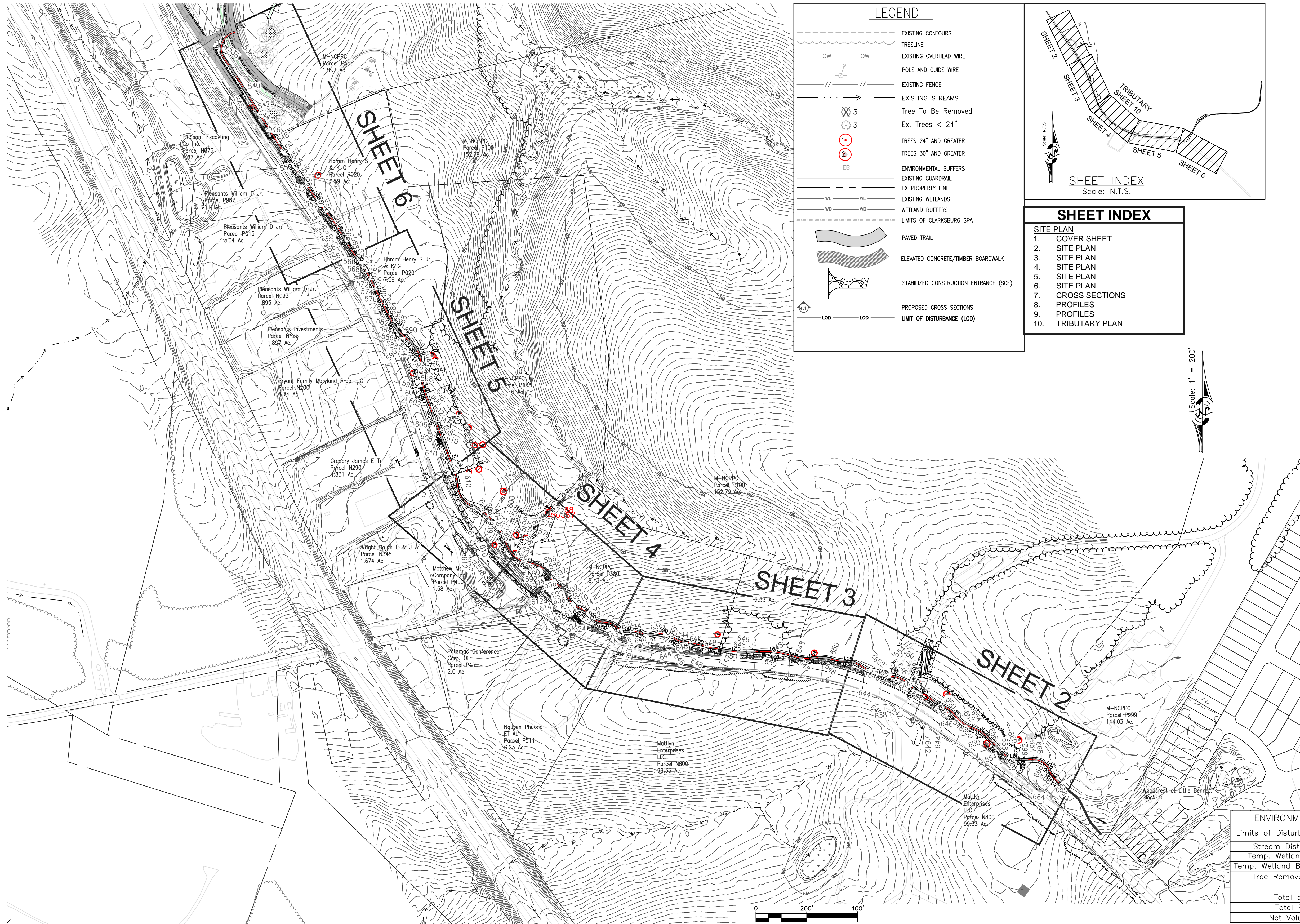
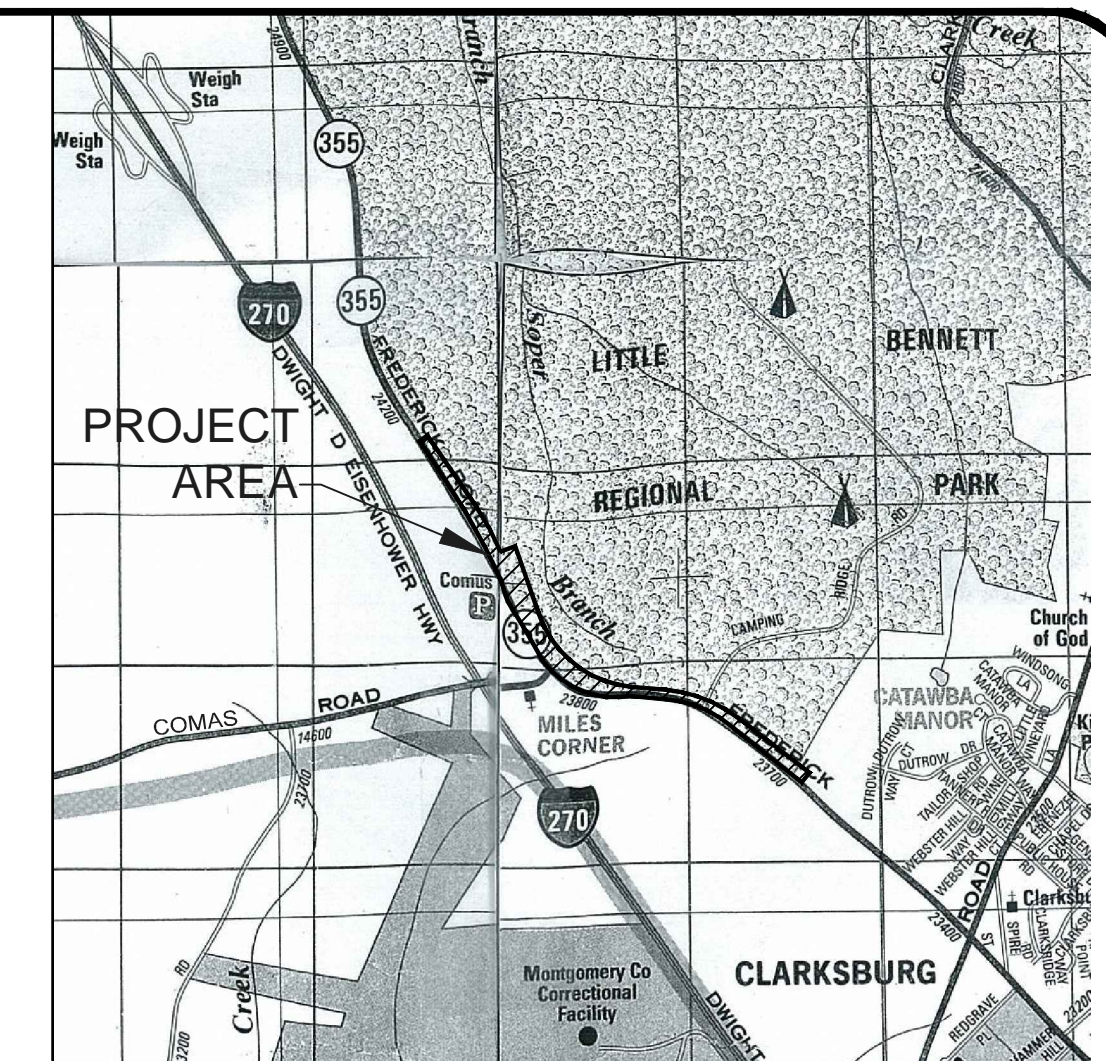
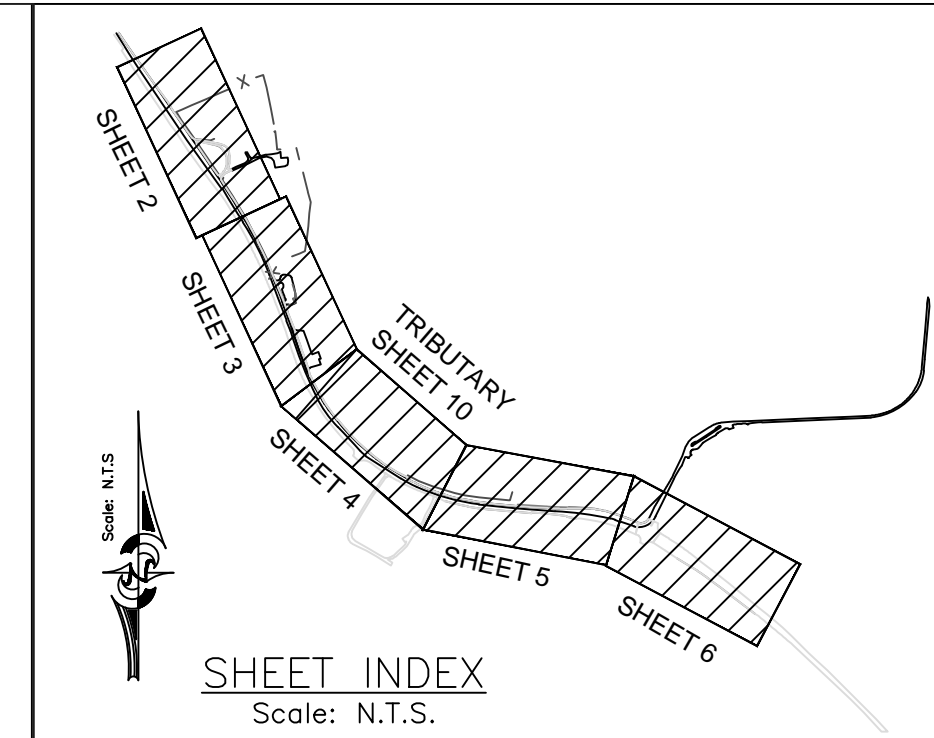


The Maryland National Capital Park and Planning Commission
LITTLE BENNETT TRAIL CONNECTOR
30% FACILITY PLANS
 MONTGOMERY COUNTY, MARYLAND



LEGEND

- EXISTING CONTOURS
- TREELINE
- OW --- EXISTING OVERHEAD WIRE
- POLE AND GUIDE WIRE
- EXISTING FENCE
- EXISTING STREAMS
- ⊗ 3 Tree To Be Removed
- ⊙ 3 Ex. Trees < 24"
- ⊙ 1 TRESSES 24" AND GREATER
- ⊙ 2 TRESSES 30" AND GREATER
- EB --- ENVIRONMENTAL BUFFERS
- EX --- EXISTING GUARDRAIL
- EX --- EXISTING PROPERTY LINE
- WL --- EXISTING WETLANDS
- WB --- WETLAND BUFFERS
- LIMITS OF CLARKSBURG SPA
- PAVED TRAIL
- ELEVATED CONCRETE/TIMBER BOARDWALK
- STABILIZED CONSTRUCTION ENTRANCE (SCE)
- PROPOSED CROSS SECTIONS
- LOD --- LIMIT OF DISTURBANCE (LOD)



SHEET INDEX

SITE PLAN

1. COVER SHEET
2. SITE PLAN
3. SITE PLAN
4. SITE PLAN
5. SITE PLAN
6. CROSS SECTIONS
7. PROFILES
8. PROFILES
9. TRIBUTARY PLAN

- GENERAL NOTES**
1. Topography shown is per GIS data received from the Montgomery County Department of Parks and per field survey performed by CPJ between January 21 - March 1, 2013.
 2. Existing utilities are based on field survey performed by CPJ between January 21 - March 1, 2013.
 3. Planimetric data shown outside the project study area is per GIS data received from the Montgomery County Department of Parks.
 4. There are no 100-year floodplain mapped within the study area per FEMA # 24031C0160D and 24031C0045D.
 5. Non-tidal wetlands within the study area were field delineated by Hoang Ta and Gabrielle Myers of Charles P. Johnson & Associates, Inc. on January 21, 2013. Non-tidal wetland boundaries delineated within the project study area were field surveyed between January 21 - March 1, 2013.
 6. Horizontal and Vertical Datum using MD State Grid NAD 83 and NAVD 88.
 7. Soils shown are per the USDA-NRCS Soil Survey of Montgomery County, MD. Map version 3, 2005 and Survey area data version 7 February, 2007.
 8. The surrounding land uses around the site are medium density residential areas and Montgomery County protected recreation areas (Little Bennett Regional Park).
 9. Waters of the US limits are from top of bank to top of bank.
 10. The limit of study is located within the Little Bennett Watershed. Streams present are designated as Use III-P, Natural Trout Waters. In-stream work may not be conducted during the period October 1 - April 30, inclusive, during any year.
 11. The contractor shall notify "Miss Utility" at 1-800-257-7777 at least 48 hours prior to any excavation work.
 12. All quantities hereon are estimates only, the contractor is responsible for verifying quantities through a field visit and his own quantity takeoffs.
 13. These plans were prepared with the field information at the time of project survey. It is possible that field conditions as of the date of construction vary from these plans and it is the contractor's responsibility to verify field conditions such as elevations, depths, etc. prior to proceeding with work. It is the contractor's responsibility to verify with the supplier/manufacture of any proprietary product that their product will function per the design for the field conditions at time of construction. The County Project Manager and Designer should be notified immediately if any deviations from the design plan are found.
 14. All specified and/or proprietary products shown hereon may be subject to substitution with other products recommended by the contractor, subject to written review and approval of the County Project Manager.
 15. All disturbed areas must be topsoiled per the Montgomery County "Standards and Specification for Topsoil". See topsoil specifications in specification manual.

ENVIRONMENTAL IMPACTS SUMMARY

Limits of Disturbance (LOD)	3.78 Ac.
Stream Disturbance	95 L.F.
Temp. Wetland Impact	6,761 Sq. Ft.
Temp. Wetland Buffer Impact	5,319 Sq. Ft.
Tree Removal (6"+)	48 Ea.
Earth Work	
Total cut	1,189 C.Y.
Total Fill	365 C.Y.
Net Volume	824 C.Y.

MISS UTILITY

Call "Miss Utility" at 1-800-257-7777 48 hours prior to the start of work. The excavator must notify all public utility companies with underground facilities in the area of proposed excavation and have those facilities located by the utility companies prior to commencing excavation. The excavator is responsible for compliance with requirements of Chapter 36A of the Montgomery County Code.

STANDARD STABILIZATION NOTE

Following initial soil disturbance or redistribution, permanent or temporary stabilization shall be completed within seven (7) calendar days as to the surface of all perimeter controls, dikes, swales, ditches, perimeter slopes, and all slopes greater than 3 horizontal to 1 vertical (3:1); and fourteen (14) days as to all other disturbed or graded areas on the project site.

F:\Little Bennett Trail Connector\42520_CAD\Design_30_Site_plan_REV1.dwg Sheet 1 Title Plotted By: Hoang Ta, 9/9/2015 11:57 AM

CPJ Associates
 Charles P. Johnson & Associates, Inc.
 Environmental Service Division
 910 Clopper Road, Suite 215N, Gaithersburg, MD 20878
 P. 301-208-9573 F. 301-926-4551 www.cpj.com

DESIGN

JF	JF
Landscape Architect	date Checked by
NA	Architect
date	Checked by
Engineer	date Checked by
HT/GSM	JF
Drawn by	date Checked by

REVIEW AND APPROVAL

park development division	date
central maintenance	date
region	date
natural resources	date

REVIEW AND APPROVAL

superintendent of parks	date
park police	date
	date
	date

The Maryland-National Capital Park and Planning Commission
 Montgomery County Department of Parks
 9500 Brunnet Avenue
 Silver Spring, Maryland 20901
 (301) 495-2535

ISSUED FOR PROCUREMENT ON

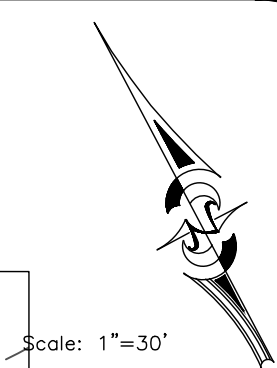
Rev. No.	Date	Description

Little Bennett Regional Park Trail Connector
30% Facility Plans
Title Sheet

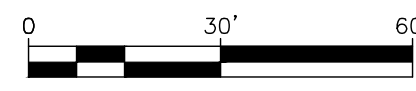
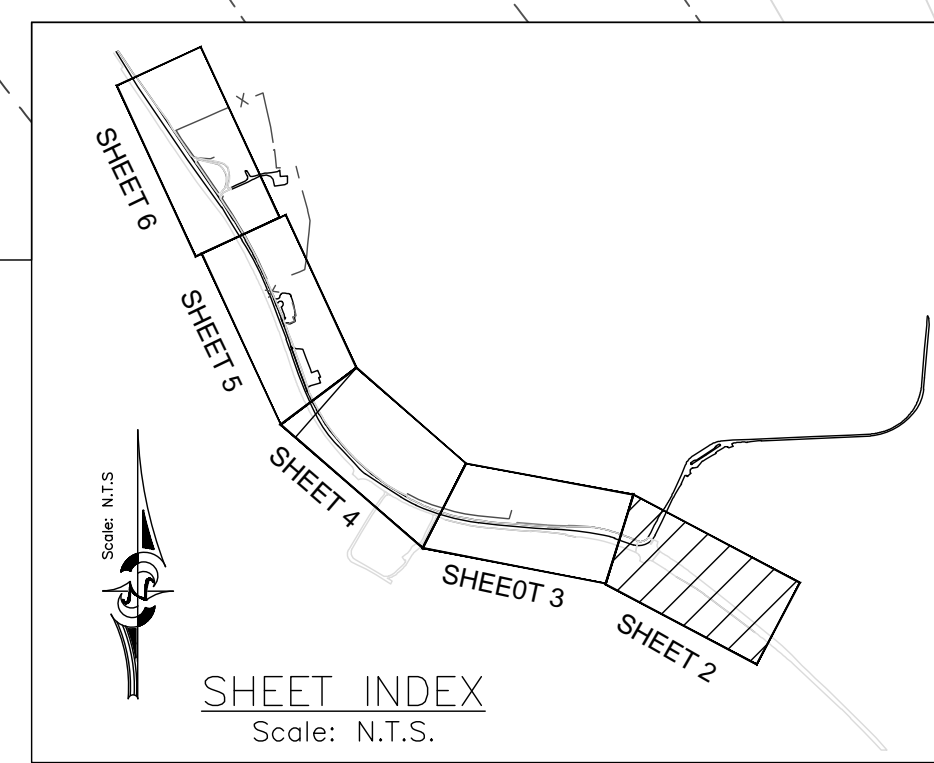
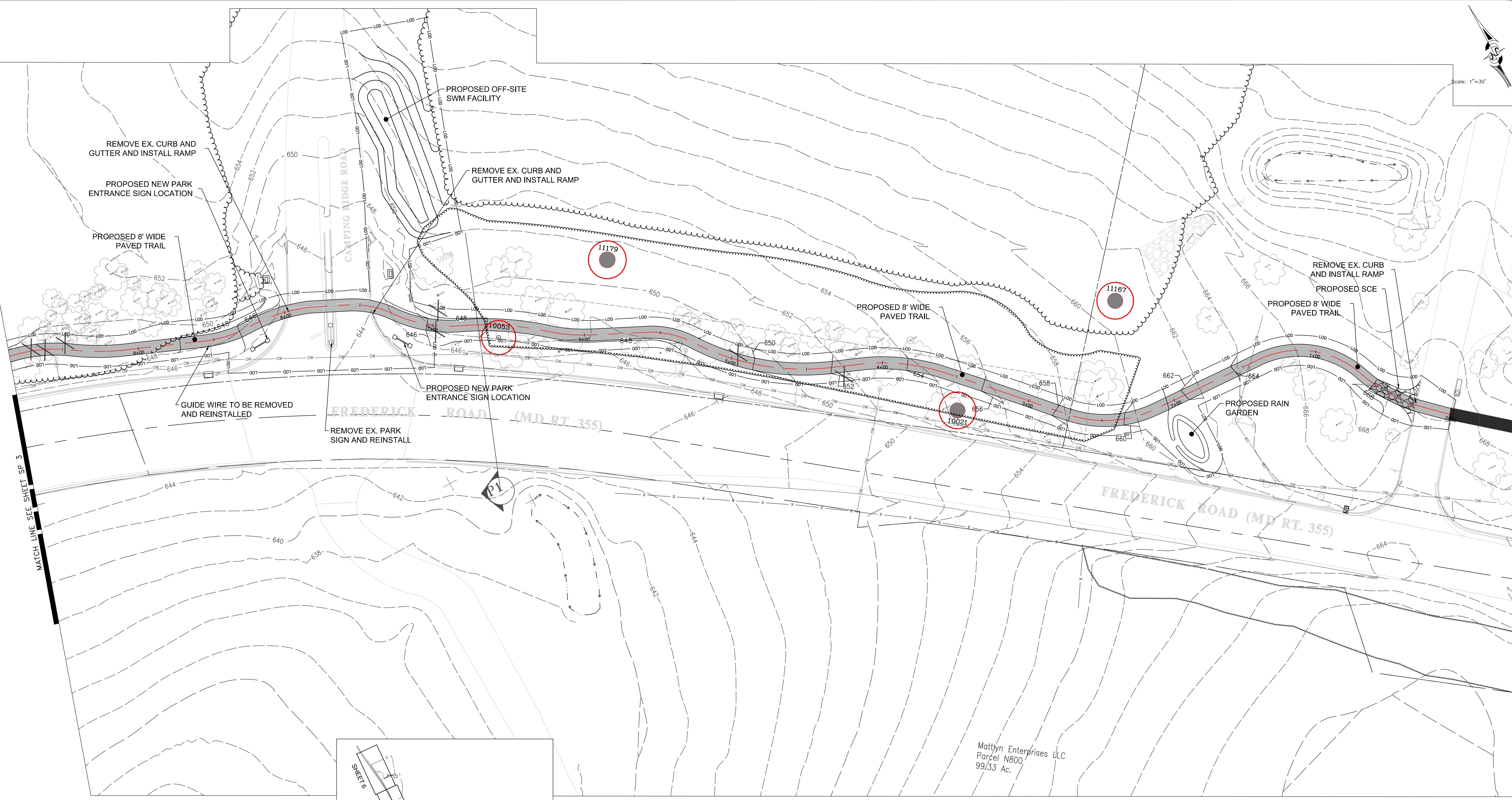
Scale: As Shown
 Date: 12/30/2013

Parcel: P999 P100 P426 Tax Map: ew22
 P380 P133 P195 P141 ew23
 P020 P555

SP
 SHT. # 1 of 10
 DWG. # ___ of ___



Scale: 1"=30'



Mattlyn Enterprises LLC
Parcel N800
99/33 Ac.

F:\Little Bennett Trail Connector\42520_CAD\Design_30_Site plan REV1.dwg Sheet 2 30 scale Plotted By: Hoang To, 9/9/2015 11:58 AM



Charles P. Johnson & Associates, Inc.
Environmental Service Division
910 Clopper Road, Suite 215N, Gaithersburg, MD 20878
P. 301-208-9873 F. 301-926-4551 www.cpj.com

DESIGN			
JF		JF	
Landscape Architect	date	Checked by	
NA		Architect	
	date	Checked by	
Engineer	date	Checked by	
HT/GSM		JF	
Drawn by	date	Checked by	

REVIEW AND APPROVAL			
park development division	date		
central maintenance	date		
region	date		
natural resources	date		

REVIEW AND APPROVAL			
superintendent of parks	date		
park police	date		
	date		
	date		



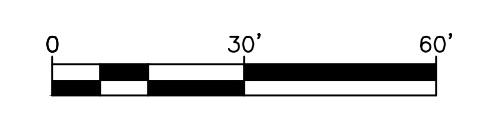
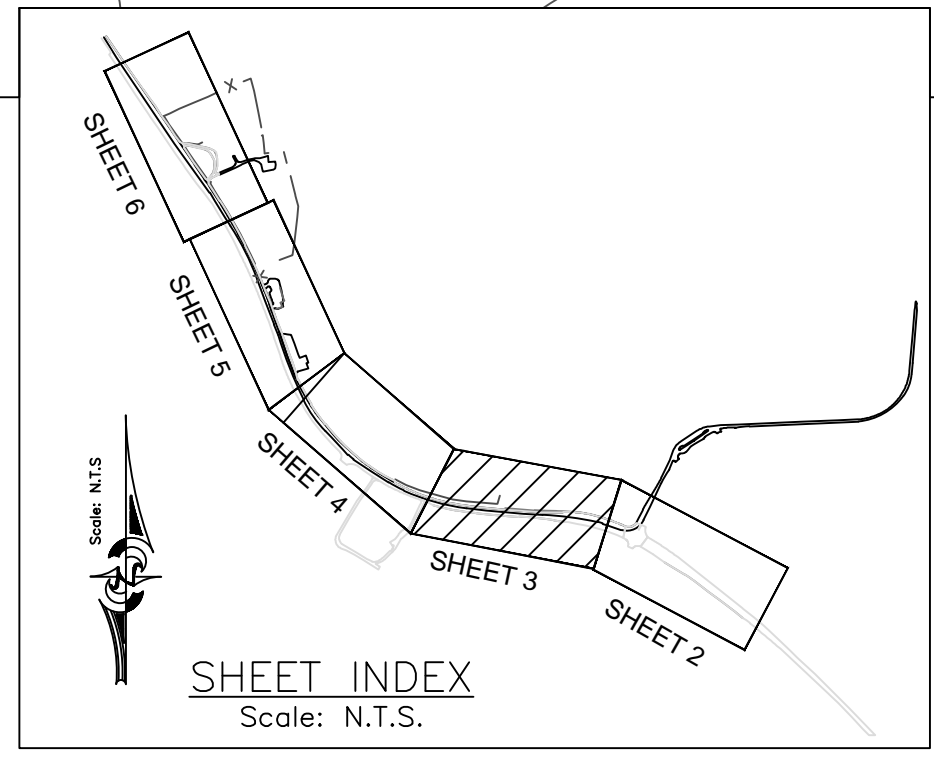
The Maryland-National Capital
Park and Planning Commission
Montgomery County Department of Parks
9500 Brunett Avenue
Silver Spring, Maryland 20901
(301) 495-2535

ISSUED FOR PROCUREMENT ON		
REVISIONS		
Rev. No.	Date	Description

Little Bennett Regional Park Trail Connector
30% Facility Plans
Site Plan
Scale: As Shown
Date: 4/20/15
Parcel: P999 P100 P426 P195 P141
P380 P133 P195 P141
P020 P555
Tax Map: ew22 ew23

SP
SHT. # 2 of 10
SP 2
DWG. # of

Scale: 1"=30'



F:\Little Bennett Trail Connector\42520_CAD\Design_30_Site plan REV1.dwg Sheet 3 30 scale Plotted By: Hoang To, 9/9/2015 11:58 AM

CPJ
Associates

Charles P. Johnson & Associates, Inc.
Environmental Service Division
910 Clopper Road, Suite 215N, Gaithersburg, MD 20878
P. 301-208-9873 F. 301-926-4551 www.cpjia.com

DESIGN			
JF		JF	
Landscape Architect	date	Checked by	
NA		Architect	
	date	Checked by	
Engineer	date	Checked by	
HT/GSM		JF	
Drawn by	date	Checked by	

REVIEW AND APPROVAL			
park development division	date		
central maintenance	date		
region	date		
natural resources	date		

REVIEW AND APPROVAL			
superintendent of parks	date		
park police	date		
	date		
	date		

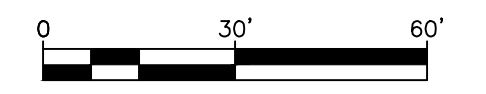
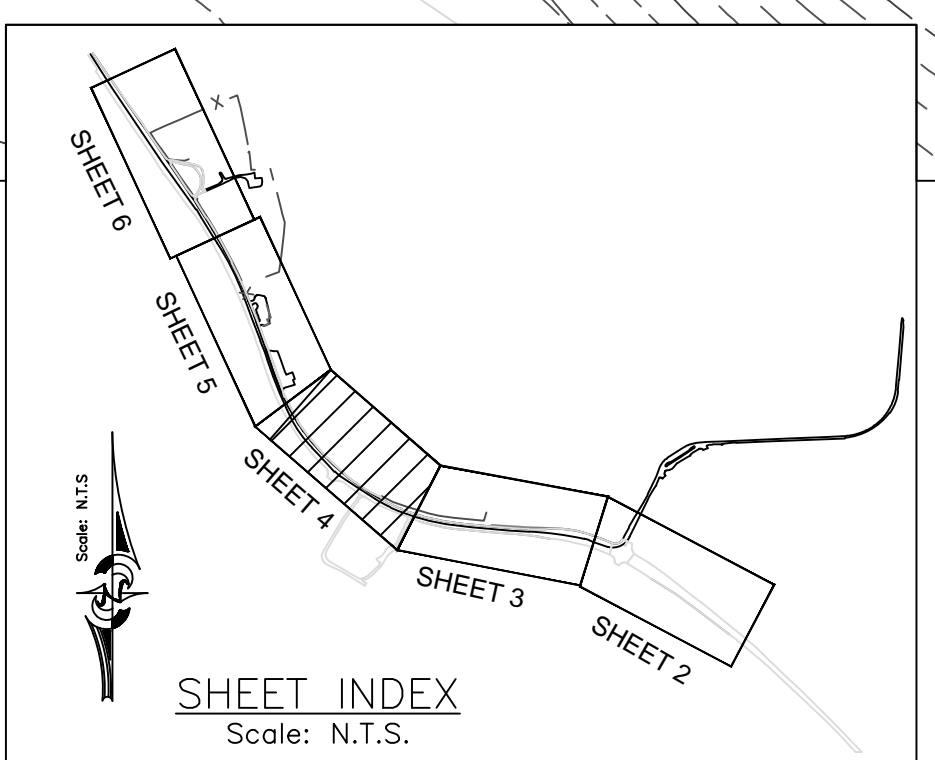
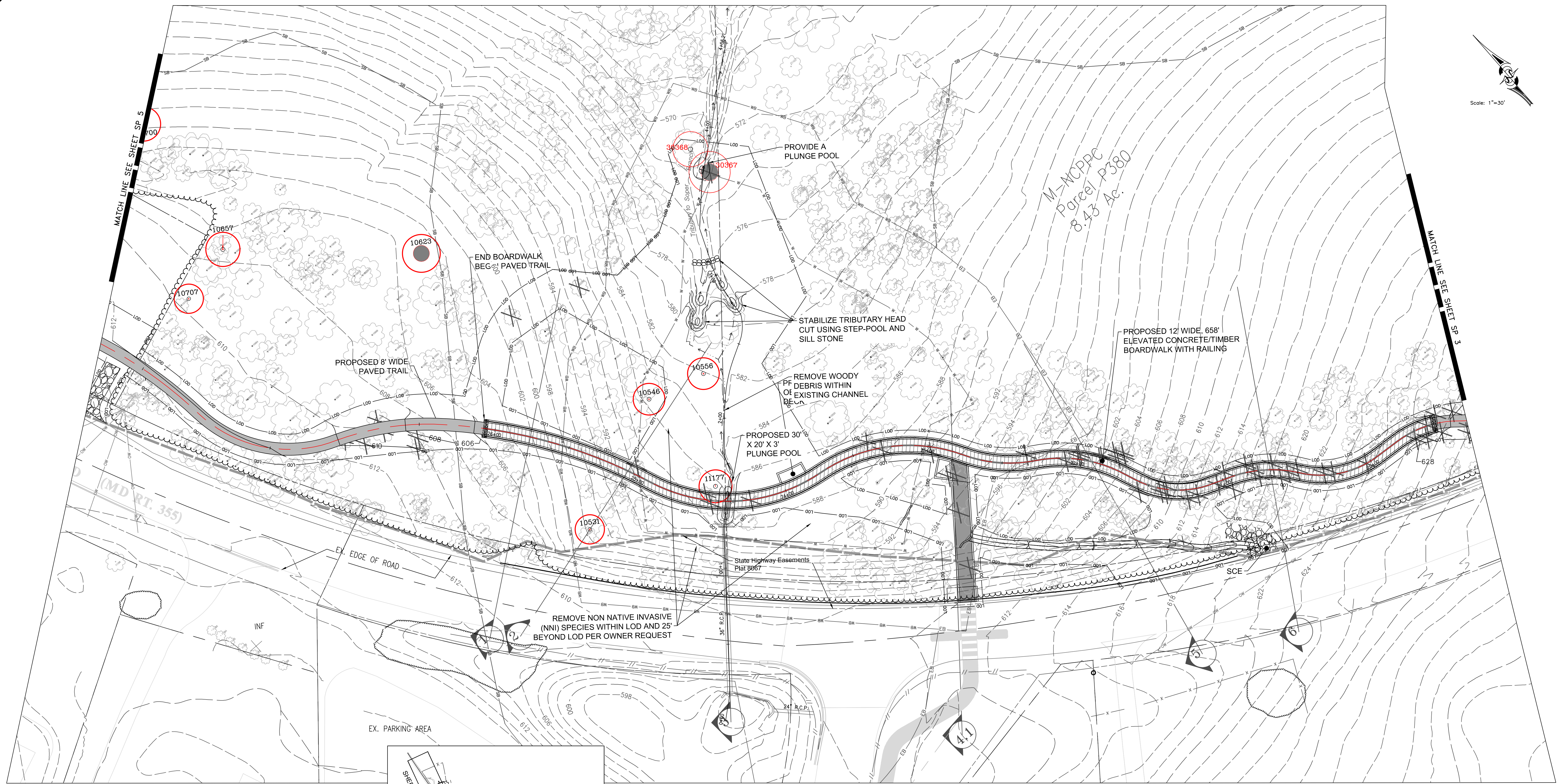
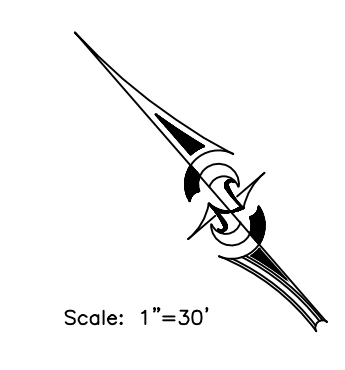


The Maryland-National Capital
Park and Planning Commission
Montgomery County Department of Parks
9500 Brunett Avenue
Silver Spring, Maryland 20901
(301) 495-2535

ISSUED FOR PROCUREMENT ON		
REVISIONS		
Rev. No.	Date	Description

Little Bennett Regional Park Trail Connector
30% Facility Plans
Site Plan
Scale: As Shown
Date: 4/20/15
Parcel: P999 P100 P426 Tax Map: ew22
P380 P133 P195 P141 ew23
P020 P555

SP
SHT. # 3 of 10
SP 3
DWG. # of



F:\Little Bennett Trail Connector\42520_CAD\Design_30_Site plan REV1.dwg Sheet 4 30 scale Plotted By: Hoang To, 9/9/2015 11:58 AM

CPJ Associates

Charles P. Johnson & Associates, Inc.
Environmental Service Division
910 Clopper Road, Suite 215N, Gaithersburg, MD 20878
P: 301-208-9873 F: 301-926-4551 www.cpj.com

DESIGN			
JF		JF	
Landscape Architect	date	Checked by	
NA		Architect	
Engineer	date	Checked by	
HT/GSM		JF	
Drawn by	date	Checked by	

REVIEW AND APPROVAL			
park development division	date		
central maintenance	date		
region	date		
natural resources	date		

REVIEW AND APPROVAL			
superintendent of parks	date		
park police	date		
	date		
	date		



The Maryland-National Capital
Park and Planning Commission
Montgomery County Department of Parks
9500 Brunett Avenue
Silver Spring, Maryland 20901
(301) 495-2535

ISSUED FOR PROCUREMENT ON		
REVISIONS		
Rev. No.	Date	Description

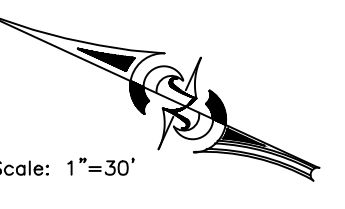
Little Bennett Regional Park Trail Connector
30% Facility Plans
Site Plan

Scale: As Shown
Date: 4/20/15

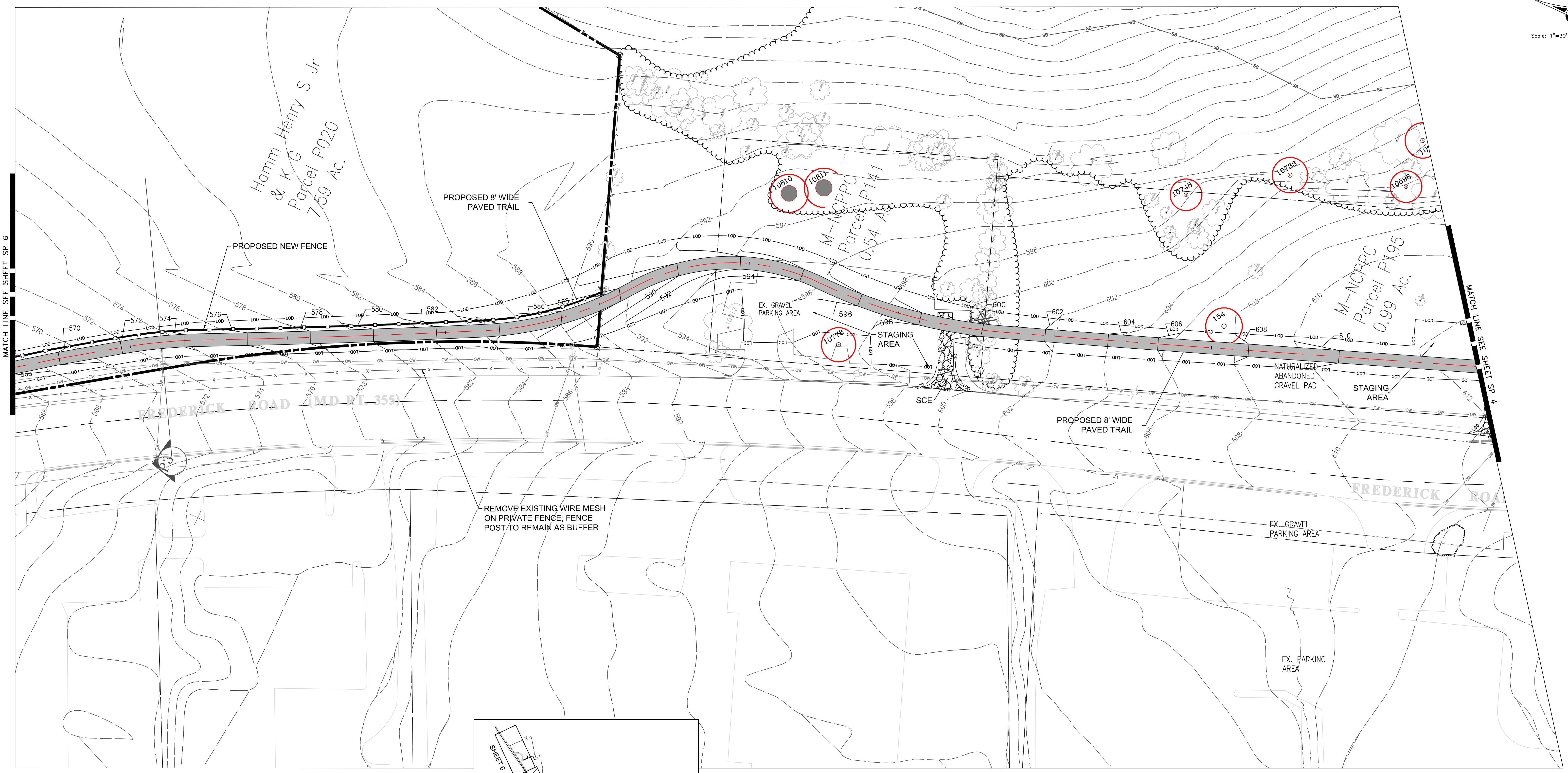
Parcel: P999 P100 P426 Tax Map: ew22
P380 P133 P195 P141 ew23
P020 P555

SHT. # 4 of 10

DWG. # of

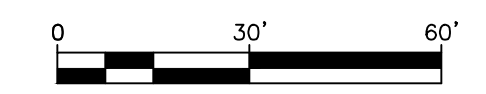
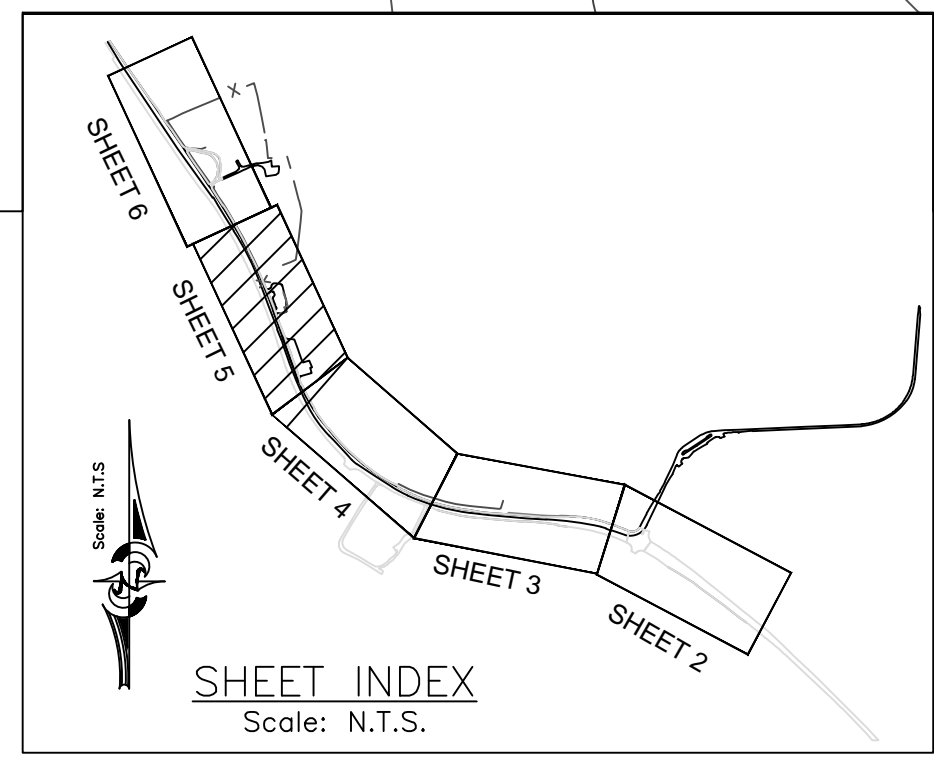


Scale: 1"=30'



MATCH LINE SEE SHEET SP 6

MATCH LINE SEE SHEET SP 4



F:\Little Bennett Trail Connector\42520_CAD\Design_30_Site plan REV1.dwg Sheet 5 30 scale Plotted By: Hoang To, 9/9/2015 11:58 AM



Charles P. Johnson & Associates, Inc.
Environmental Service Division
910 Clopper Road, Suite 215N, Gaithersburg, MD 20878
P: 301-208-9573 F: 301-926-4551 www.cpj.com

DESIGN			
JF		JF	
Landscape Architect	date	Checked by	
NA		Architect	
	date	Checked by	
Engineer	date	Checked by	
HT/GSM		JF	
Drawn by	date	Checked by	

REVIEW AND APPROVAL			
park development division	date		
central maintenance	date		
region	date		
natural resources	date		

REVIEW AND APPROVAL			
superintendent of parks	date		
park police	date		
	date		
	date		



The Maryland-National Capital
Park and Planning Commission
Montgomery County Department of Parks
9500 Brunett Avenue
Silver Spring, Maryland 20901
(301) 495-2535

ISSUED FOR PROCUREMENT ON		
REVISIONS		
Rev. No.	Date	Description

Little Bennett Regional Park Trail Connector
30% Facility Plans

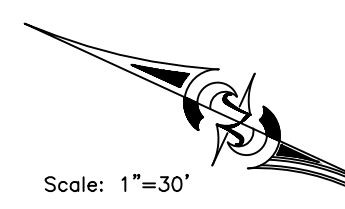
Site Plan

Scale: As Shown
Date: 4/20/15

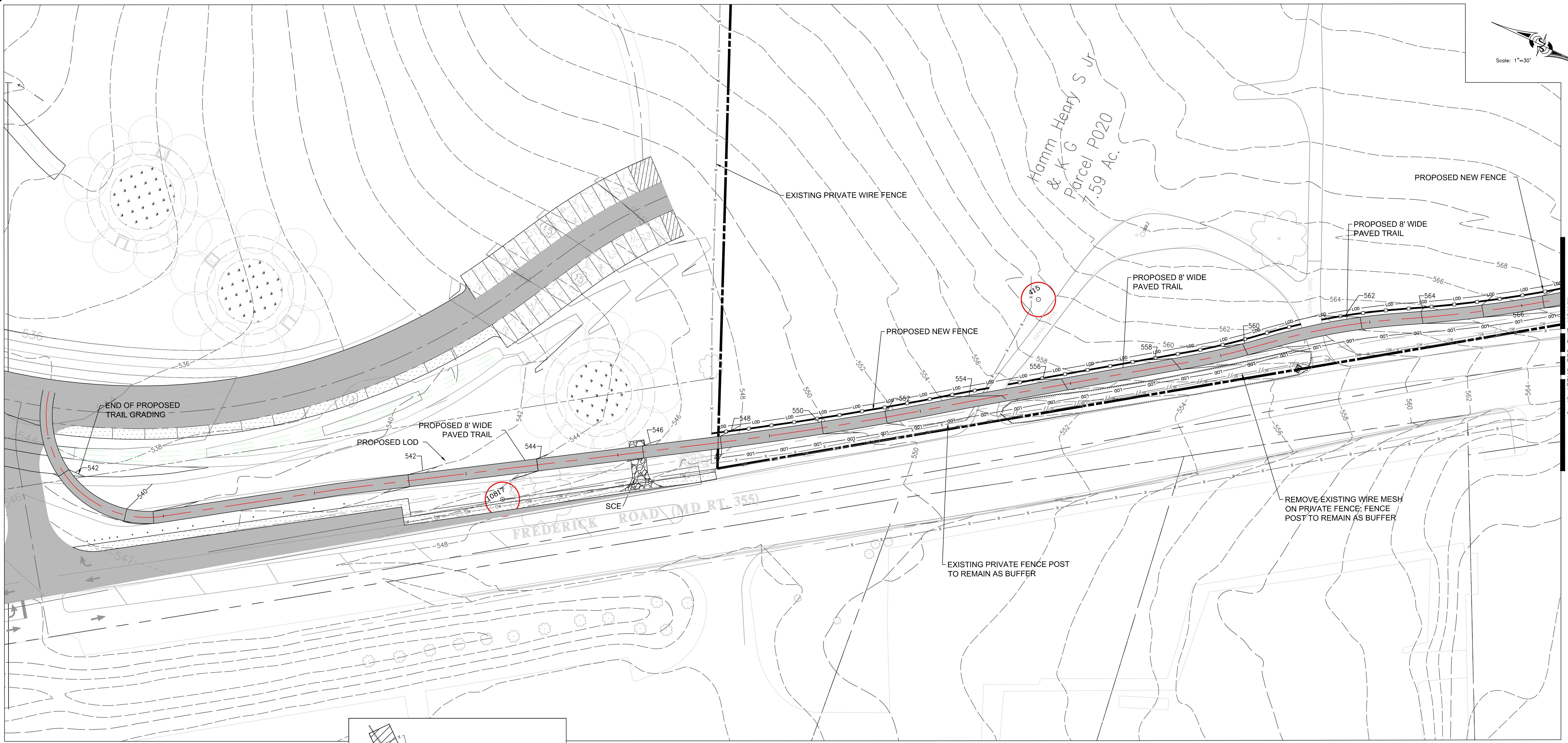
Parcel: P999 P100 P426 Tax Map: ew22
P380 P133 P195 P141 ew23
P020 P555

SP
SHT. # 5 of 10

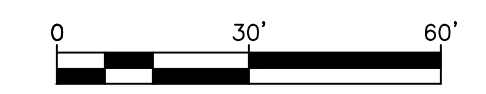
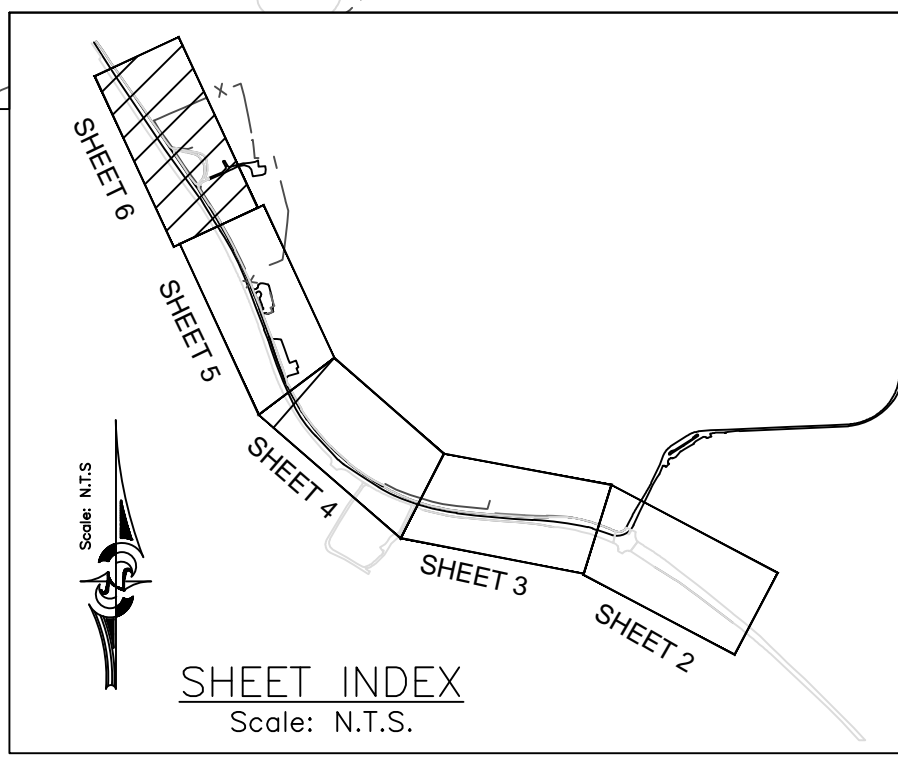
DWG. # ___ of ___



Scale: 1"=30'



MATCH LINE SEE SHEET SP 3



F:\Little Bennett Trail Connector\42520_CAD\Design_30_Site plan REV1.dwg Sheet 6 30 scale Plotted By: Hoang To, 9/9/2015 11:57 AM



Charles P. Johnson & Associates, Inc.
Environmental Service Division
910 Clopper Road, Suite 215N, Gaithersburg, MD 20878
P. 301-208-9873 F. 301-926-4551 www.cpjia.com

DESIGN			
JF	date	JF	Checked by
Landscape Architect		NA	Checked by
Architect	date	HT/GSM	Checked by
Engineer	date	JF	Checked by
Drawn by	date		Checked by

REVIEW AND APPROVAL			
park development division	date		
central maintenance	date		
region	date		
natural resources	date		

REVIEW AND APPROVAL			
superintendent of parks	date		
park police	date		
	date		
	date		

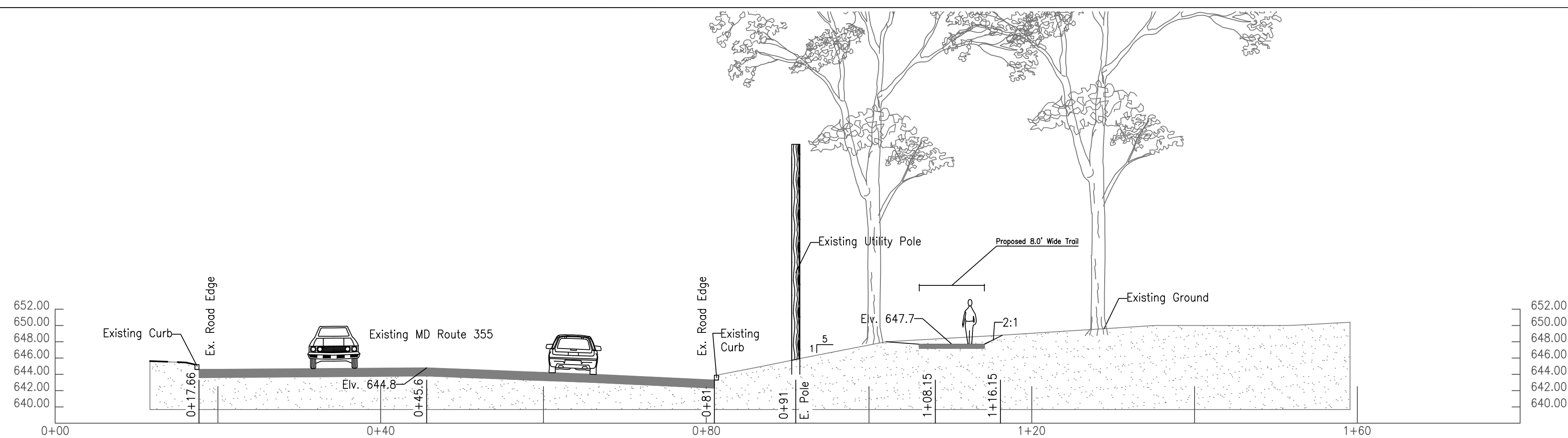


The Maryland-National Capital
Park and Planning Commission
Montgomery County Department of Parks
9500 Brunett Avenue
Silver Spring, Maryland 20901
(301) 495-2535

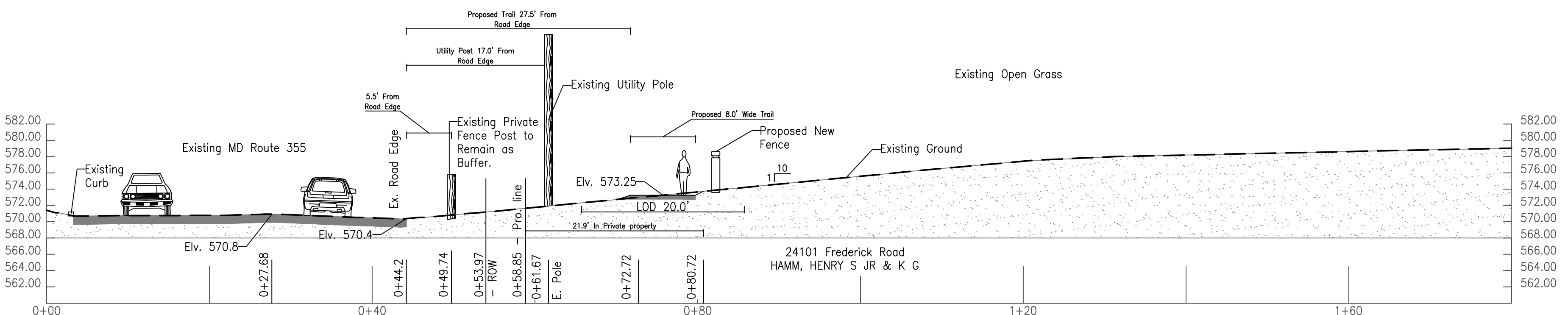
ISSUED FOR PROCUREMENT ON		
REVISIONS		
Rev. No.	Date	Description

Little Bennett Regional Park Connector
30% Facility Plans
Site Plan
Scale: As Shown
Date: 12/30/13
Parcel: P999 P100 P426 Tax Map: ew22
P380 P133 P195 P141 ew23
P020 P555

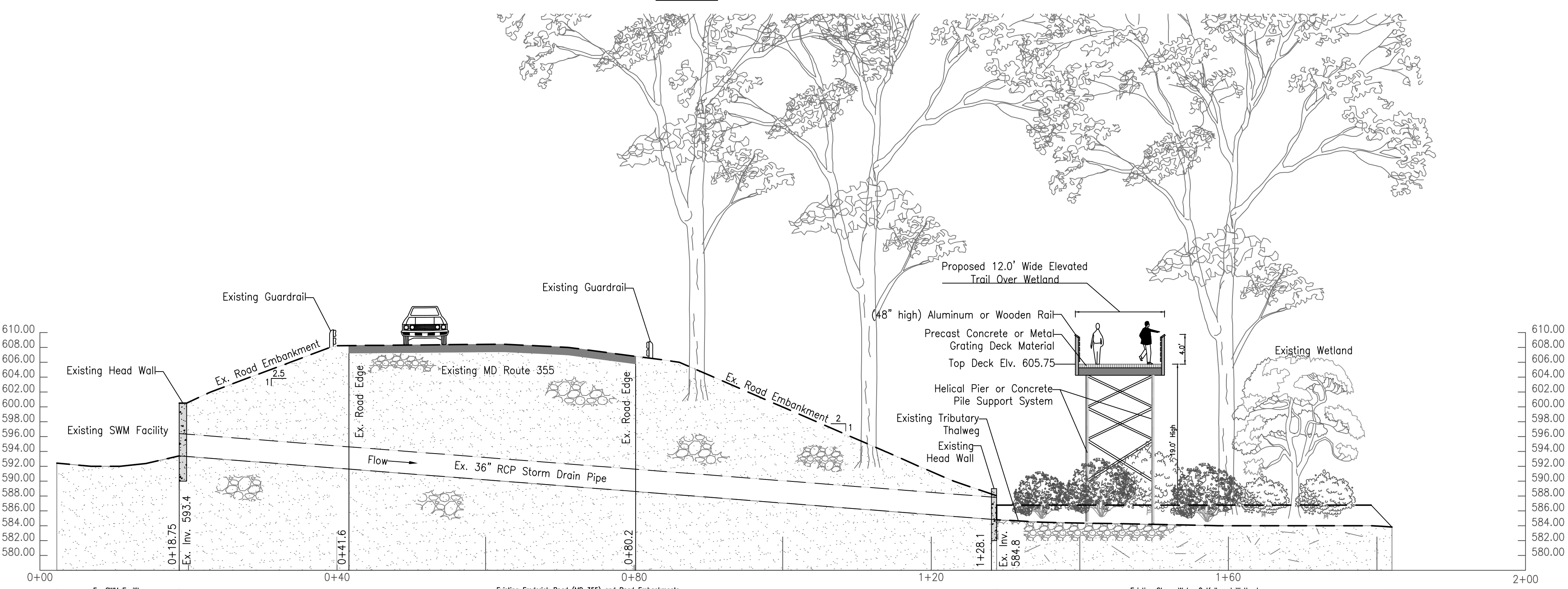
SP
SHT. # 6 of 10
DWG. # ____ of ____



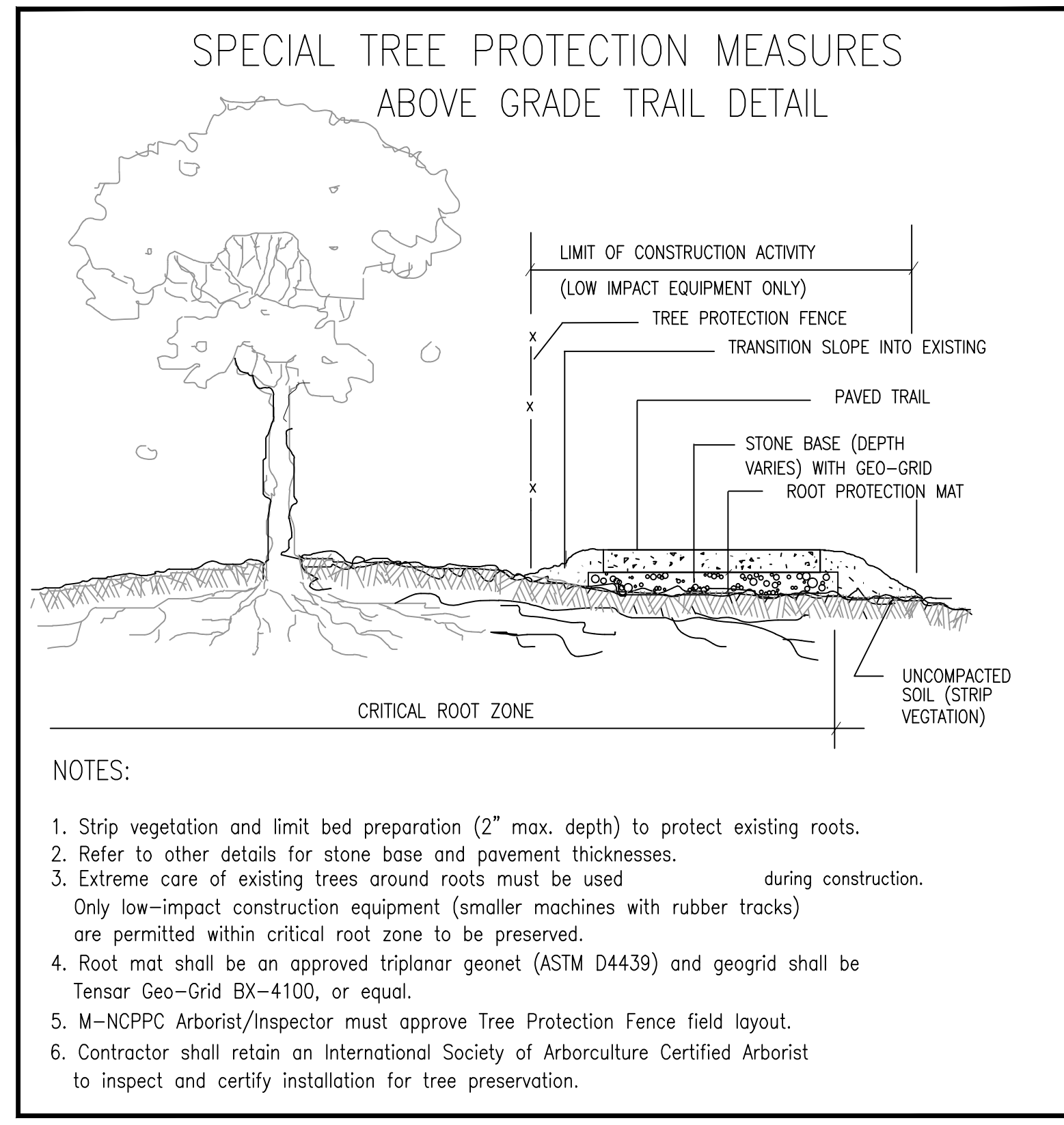
Proposed Cross Section P1
Scale: 1"=10'



Proposed Cross Section P3
Scale: 1"=10'

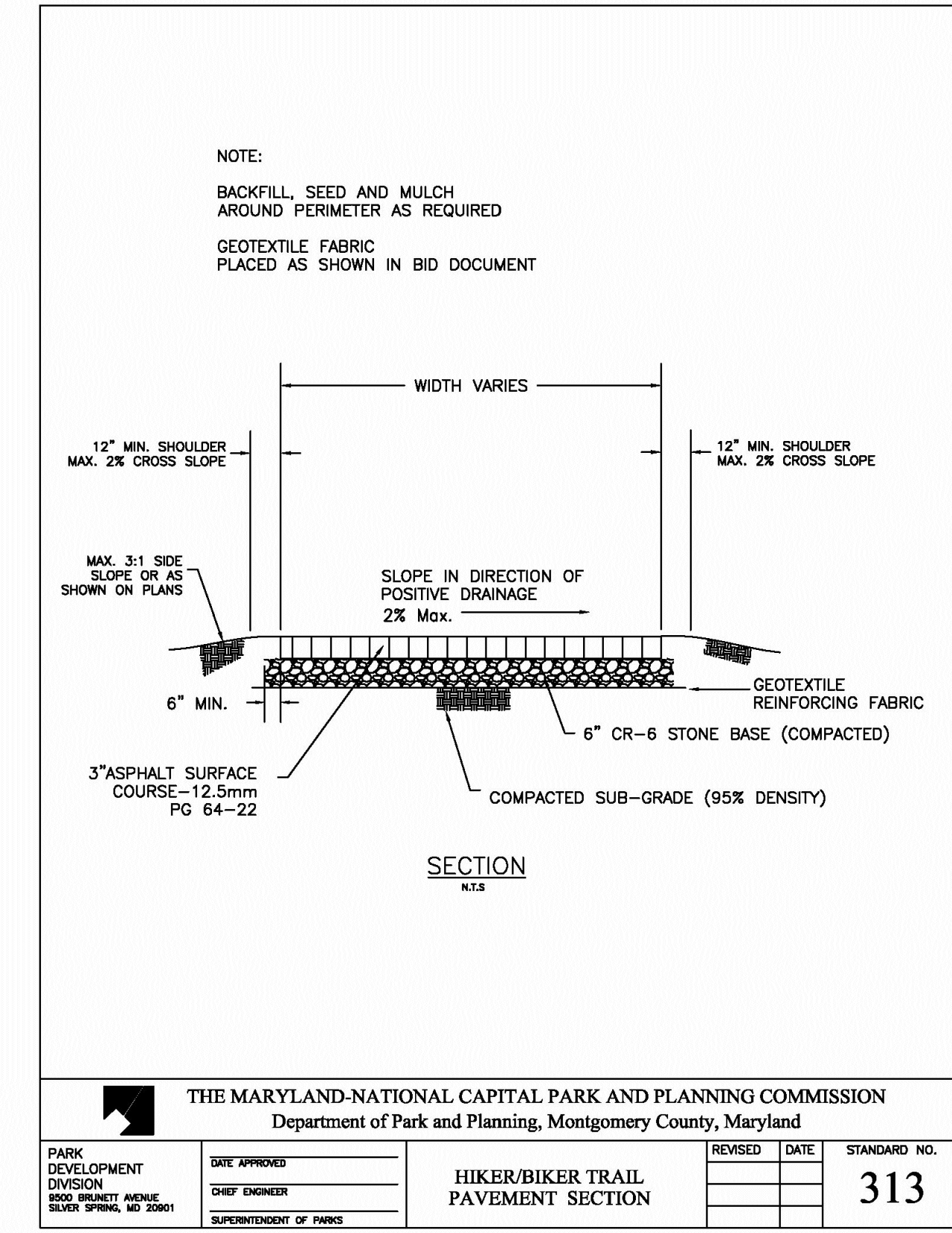


Proposed Cross Section #3
Scale: 1"=10'



- NOTES:
- Strip vegetation and limit bed preparation (2" max. depth) to protect existing roots.
 - Refer to other details for stone base and pavement thicknesses.
 - Extreme care of existing trees around roots must be used during construction. Only low-impact construction equipment (smaller machines with rubber tracks) are permitted within critical root zone to be preserved.
 - Root mat shall be an approved triplanar geonet (ASTM D4439) and geogrid shall be Tensor Geo-Grid BX-4100, or equal.
 - M-NCPPC Arborist/Inspector must approve Tree Protection Fence field layout.
 - Contractor shall retain an International Society of Arboriculture Certified Arborist to inspect and certify installation for tree preservation.

Above Grade Trail Detail - n.t.s



THE MARYLAND-NATIONAL CAPITAL PARK AND PLANNING COMMISSION
Department of Park and Planning, Montgomery County, Maryland

PARK DEVELOPMENT DIVISION CHIEF ENGINEER SILVER SPRING, MD 20901	DATE APPROVED CHIEF ENGINEER	REVISED DATE	STANDARD NO. 313
--	---------------------------------	-----------------	----------------------------

HIKER/BIKER TRAIL PAVEMENT SECTION

F:\Little Bennett Trail Connector\42820_CAD\Design 30 Sections and Profiles REVISED SHEET 7 SEC. Plotted By: Hoang To, 9/9/2015 12:13 PM, n.t.s.

CPJ Associates
Charles P. Johnson & Associates, Inc.
Environmental Service Division
910 Clepper Road, Suite 215N, Gaithersburg, MD 20878
P. 301-208-9873 F. 301-926-4551 www.cpjia.com

DESIGN			
JF		JF	
Landscape Architect	date	Checked by	
NA		Checked by	
Architect	date	Checked by	
Engineer	date	Checked by	
HT/GSM		Checked by	
Drawn by	date	Checked by	

REVIEW AND APPROVAL			
	date		
park development division	date		
central maintenance	date		
region	date		
natural resources	date		

REVIEW AND APPROVAL SHEET INDEX			
	date		
superintendent of parks	date		
park police	date		
	date		
	date		

The Maryland-National Capital Park and Planning Commission
Montgomery County Department of Parks
9500 Brunett Avenue
Silver Spring, Maryland 20901
(301) 495-2535

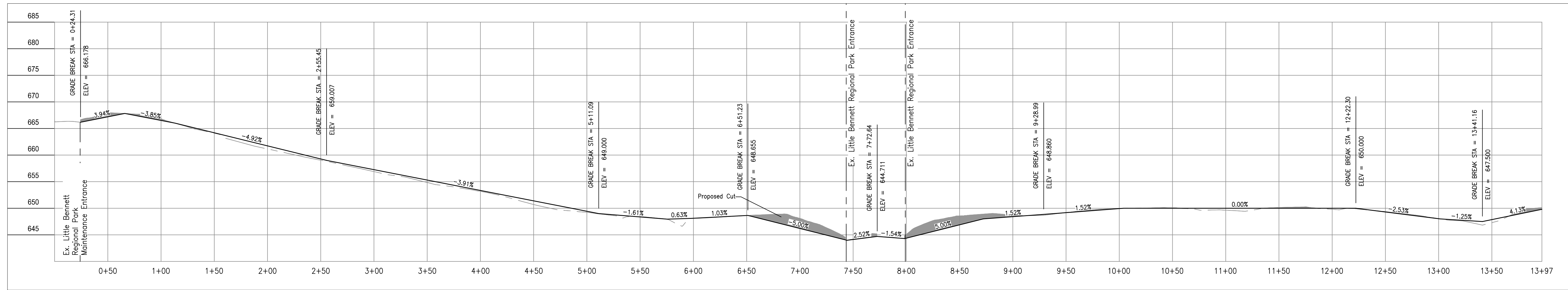
ISSUED FOR PROCUREMENT ON		
REVISIONS		
Rev. No.	Date	Description

Little Bennett Regional Park Trail Connector
30% Facility Plans

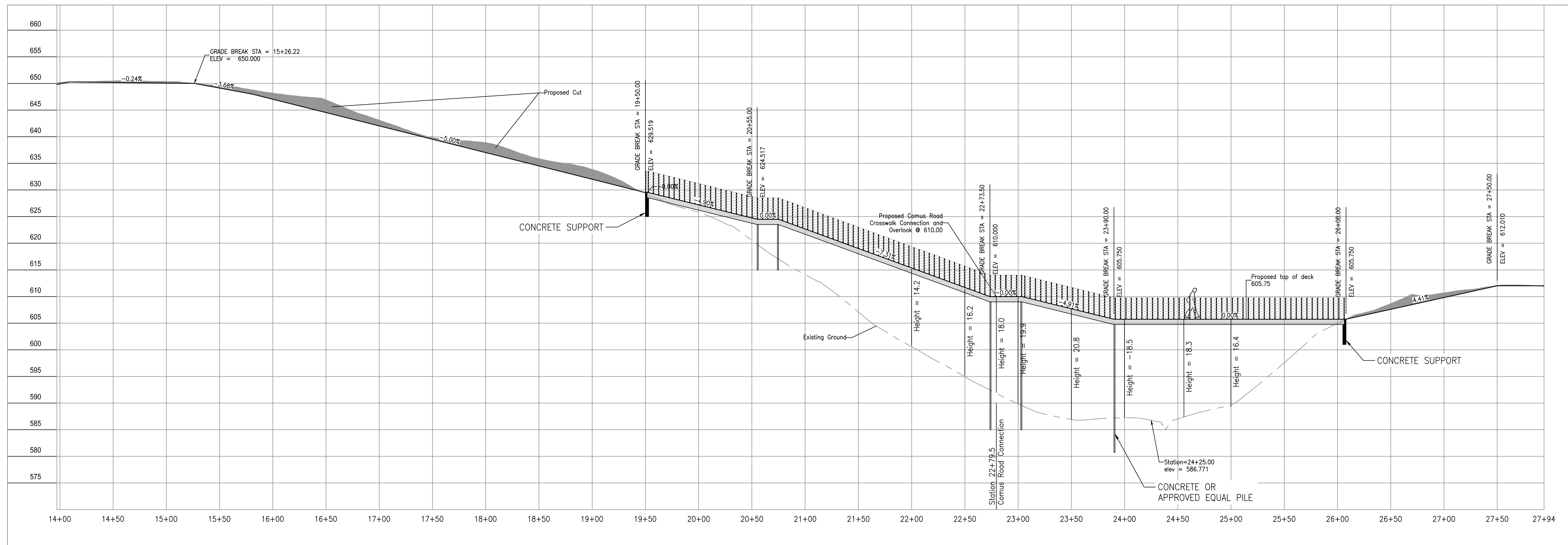
Scale: As Shown
Date: 4/20/2015

Parcel: P999 P100 P426 P380 P133 P195 P141 P020 P555
Tax Map: ew22 ew23

SHT. # 7 of 10
DWG. # of



Profile View 1



Profile View 2

All Profile View Scale: 0 50' 100'
 V - 1" = 10'
 H - 1" = 50'

F:\Little Bennett Trail Connector\42820_CAD\Design_3D_Sections and Profiles REV.dwg SHEET 8 PRO Plotted By: Hoang To, 9/9/2015 12:13 PM, ---



Charles P. Johnson & Associates, Inc.
 Environmental Service Division
 910 Clepper Road, Suite 215N, Gaithersburg, MD 20878
 P. 301-208-9873 F. 301-926-4551 www.cpj.com

DESIGN

JF		JF
Landscape Architect	date	Checked by
NA		Architect
	date	Checked by
Engineer	date	Checked by
HT/GSM		JF
Drawn by	date	Checked by

REVIEW AND APPROVAL

park development division	date
central maintenance	date
region	date
natural resources	date

REVIEW AND APPROVAL

superintendent of parks	date
park police	date
	date
	date



The Maryland-National Capital
 Park and Planning Commission
 Montgomery County Department of Parks
 9500 Brunett Avenue
 Silver Spring, Maryland 20901
 (301) 495-2535

ISSUED FOR PROCUREMENT ON

REVISIONS		
Rev. No.	Date	Description

**Little Bennett Regional Park Trail Connector
 30% Facility Plans**

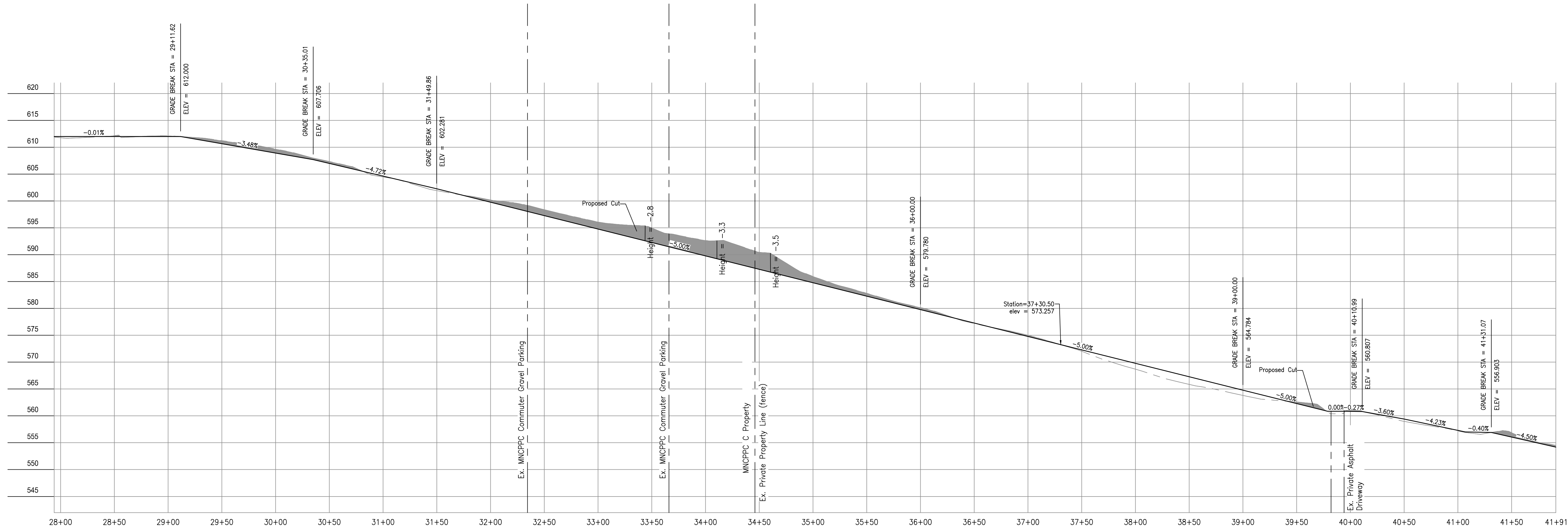
Scale: As Shown
 Date: 4/20/2015

Parcel: P999 P100 P426
 P380 P133 P195 P141
 P020 P555
 Tax Map: ew22
 ew23

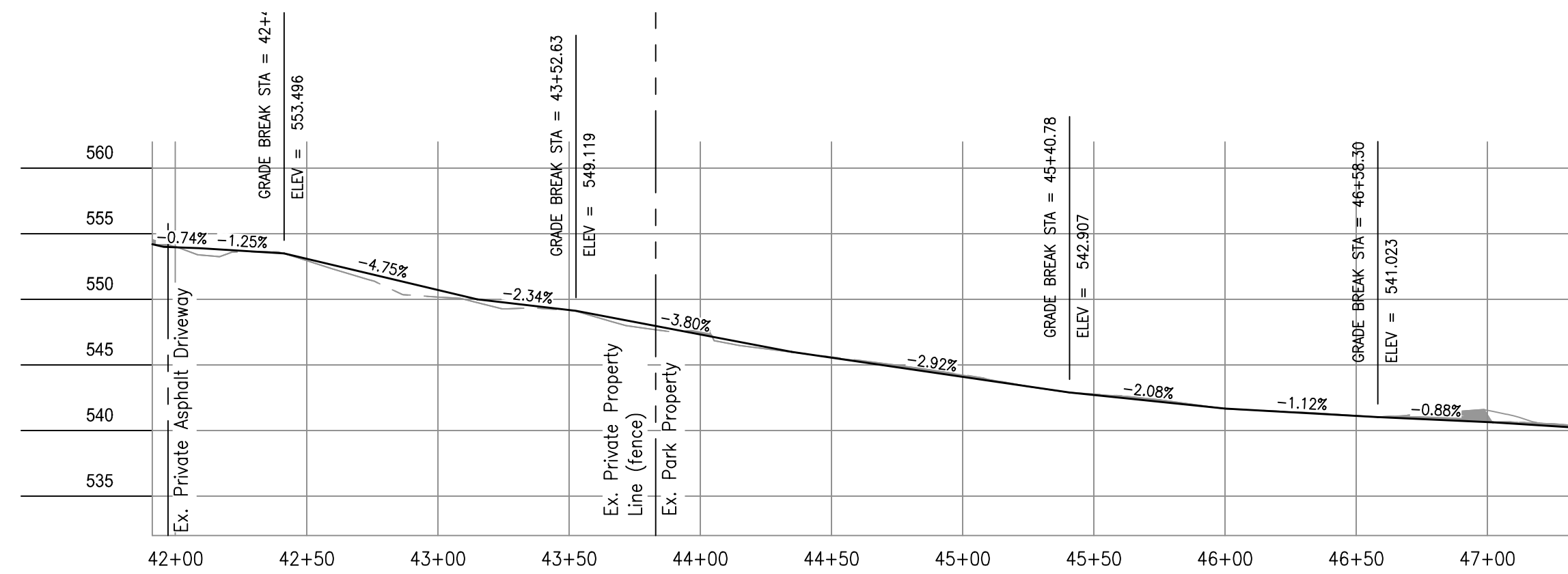
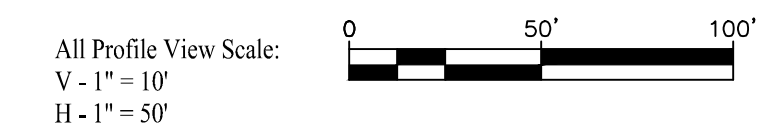
SHT. # 8 of 10

SWM 5

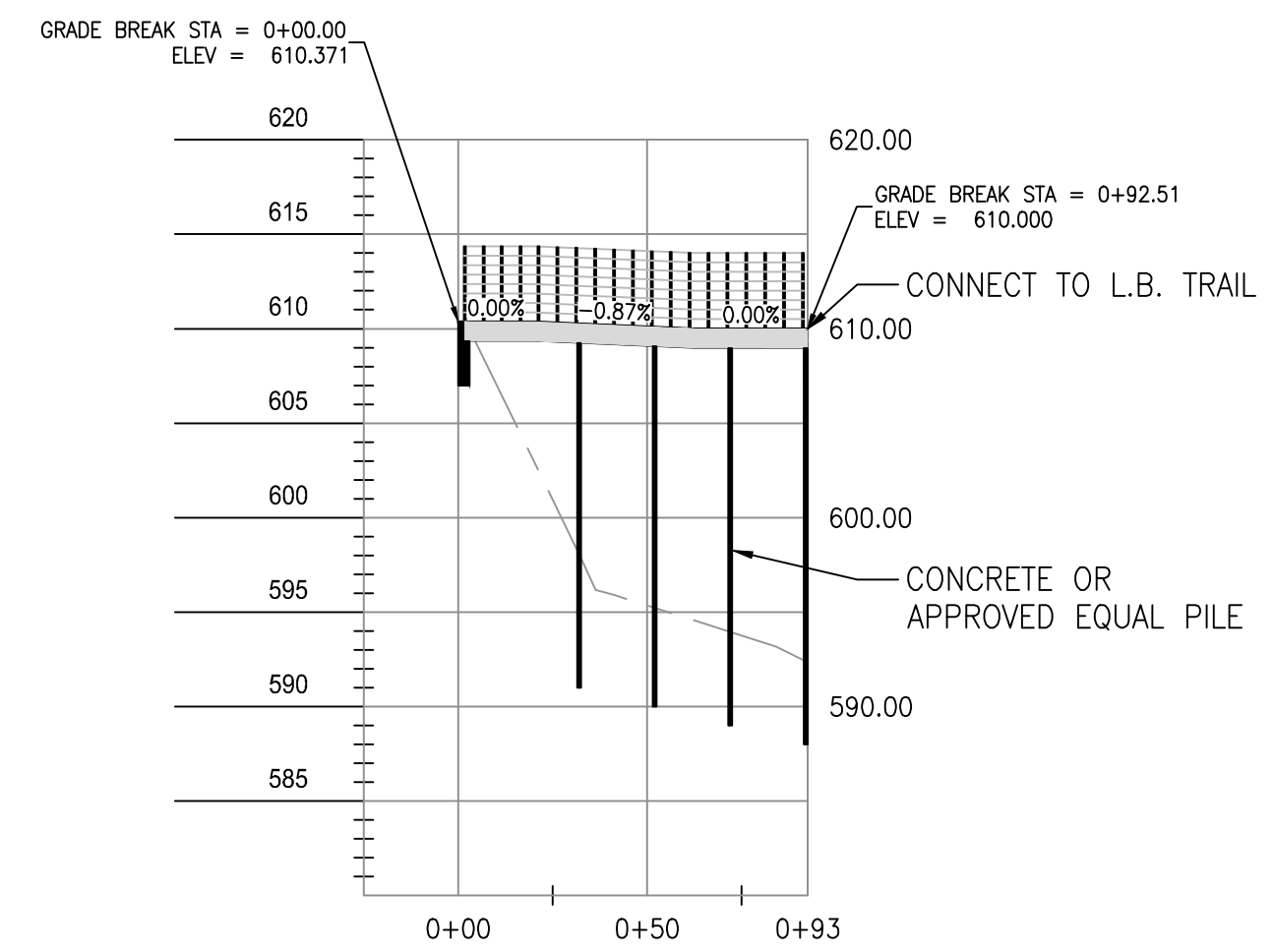
DWG. # of



Profile View 3



Profile View 4



Comus Rd. Connection Profile View

F:\Little Bennett Trail Connector\42520_CAD\Design_30_Sections and Profiles REV.dwg, SHEET 9 PRO, Plotted By: Hong To, 9/9/2015 12:13 PM, ---



Charles P. Johnson & Associates, Inc.
Environmental Service Division
910 Clopper Road, Suite 215N, Gaithersburg, MD 20878
P. 301-208-9873 F. 301-926-4551 www.cpj.com

DESIGN			
JF		JF	
Landscape Architect	date	Checked by	
NA		Checked by	
Architect	date	Checked by	
Engineer	date	Checked by	
HT/GSM		Checked by	
Drawn by	date	Checked by	

REVIEW AND APPROVAL			
park development division	date		
central maintenance	date		
region	date		
natural resources	date		

REVIEW AND APPROVAL			
superintendent of parks	date		
park police	date		
	date		
	date		



The Maryland-National Capital
Park and Planning Commission
Montgomery County Department of Parks
9500 Brunett Avenue
Silver Spring, Maryland 20901
(301) 495-2535

ISSUED FOR PROCUREMENT ON		
REVISIONS		
Rev. No.	Date	Description

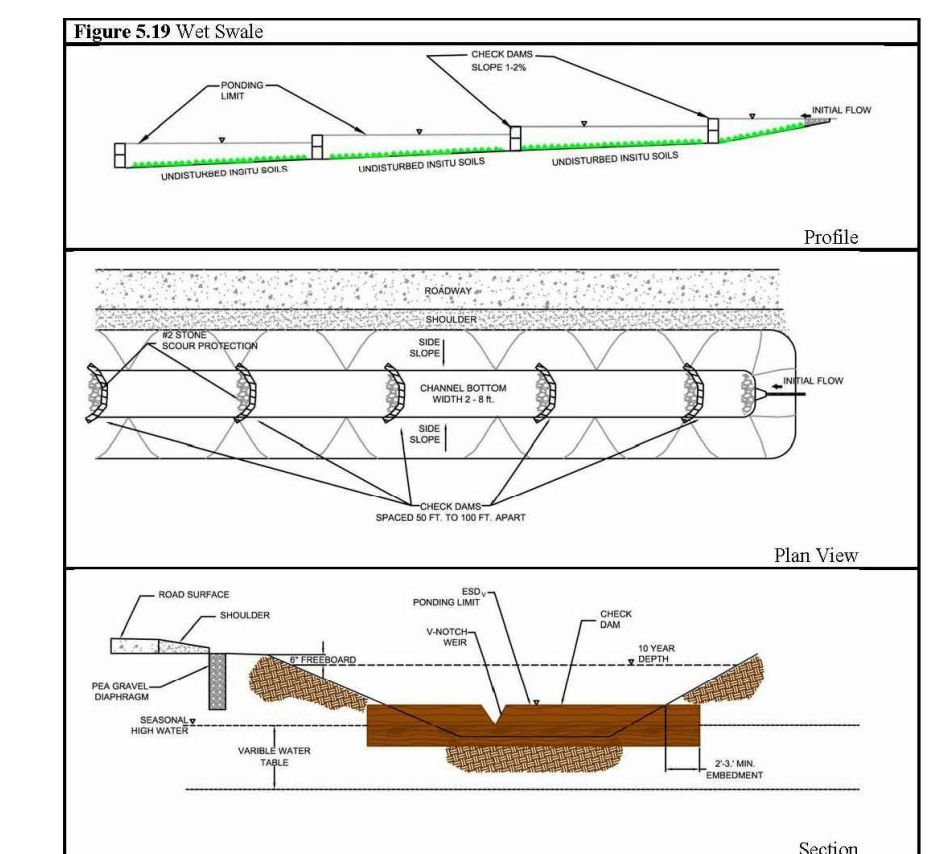
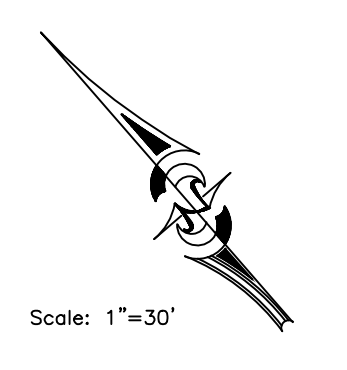
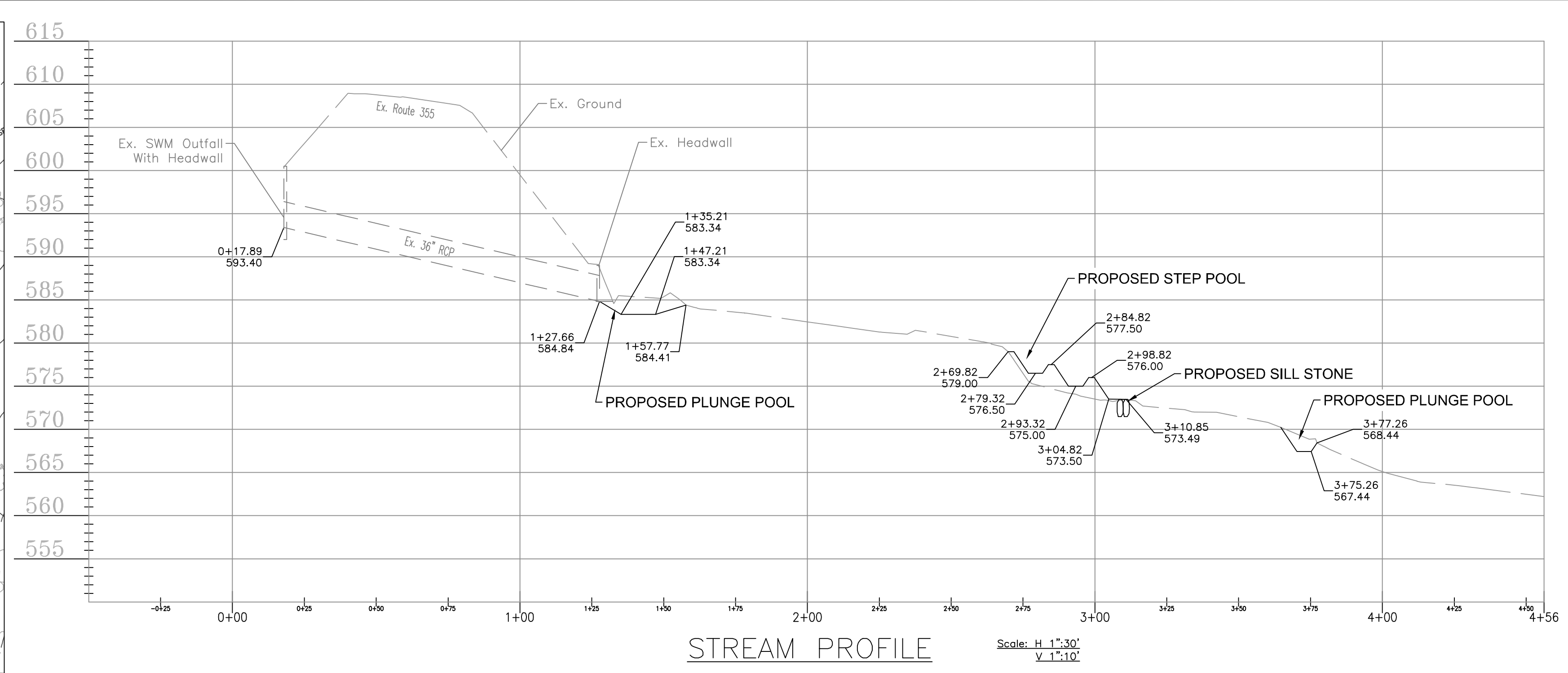
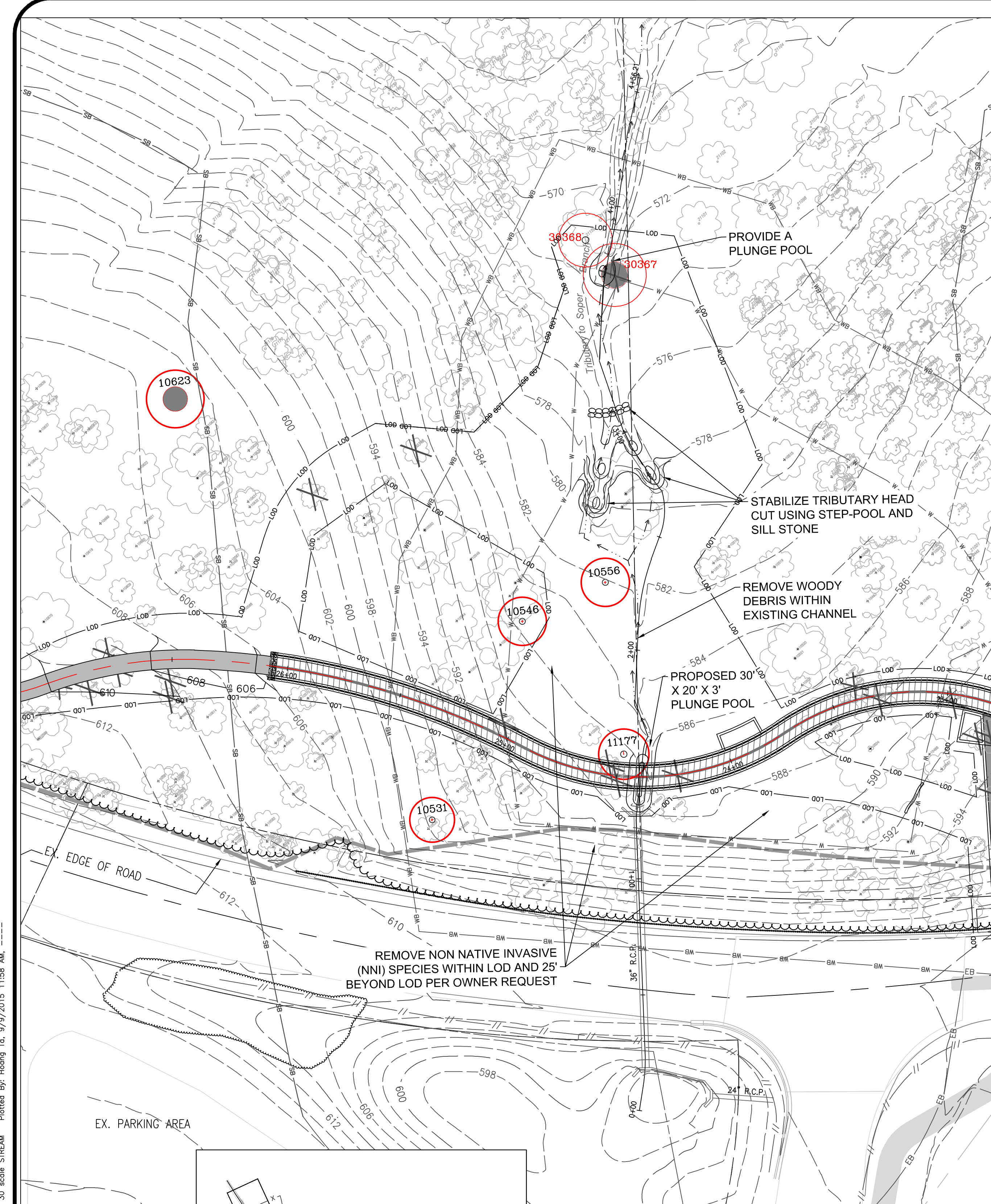
Little Bennett Regional Park Trail Connector
30% Facility Plans

Scale: As Shown
Date: 4/20/2015

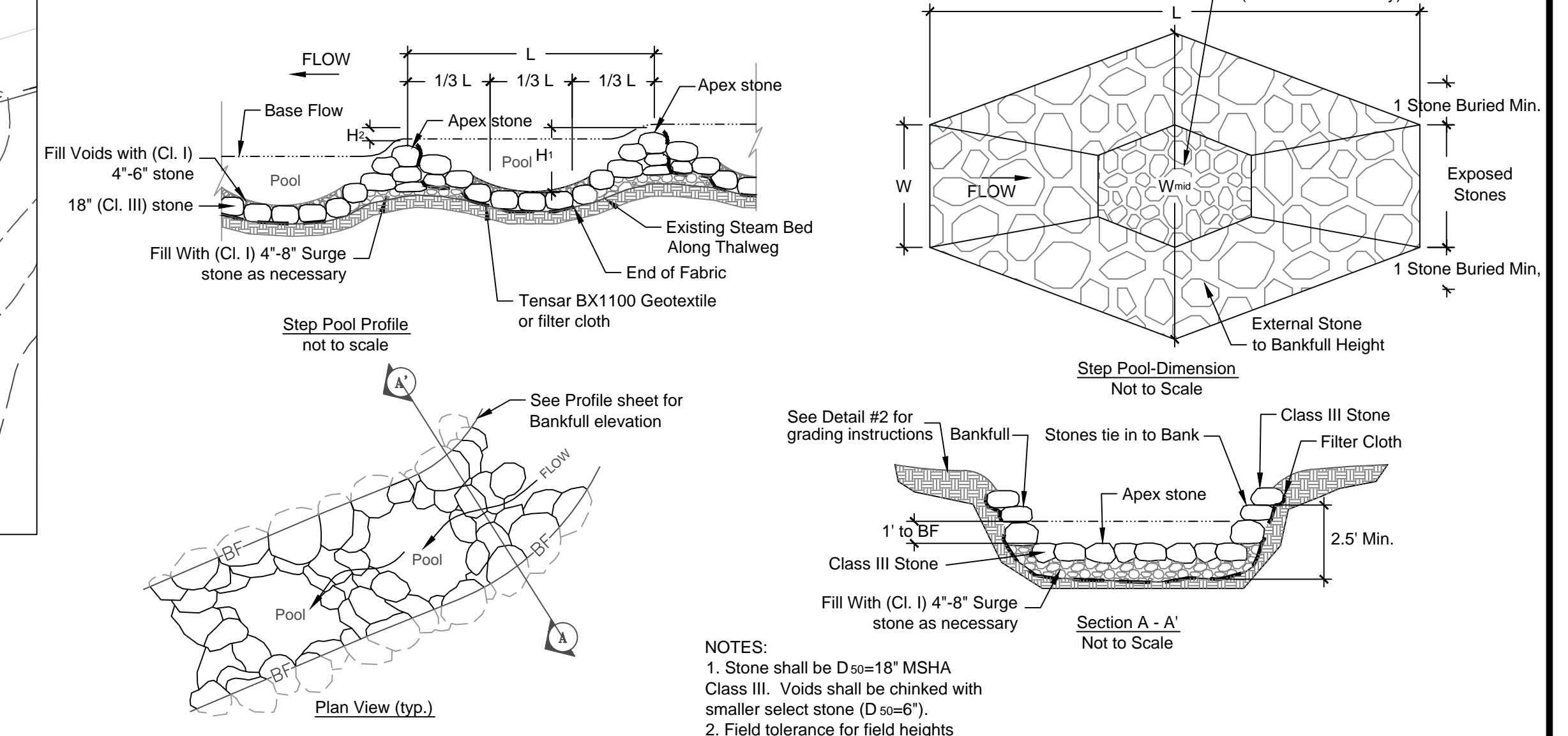
Parcel: P999 P100 P426 P195 P141
P380 P133 P195 P141
P020 P555

Tax Map: ew22 ew23

SHT. # 9 of 10
SWM 6
DWG. # of



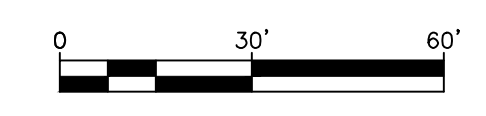
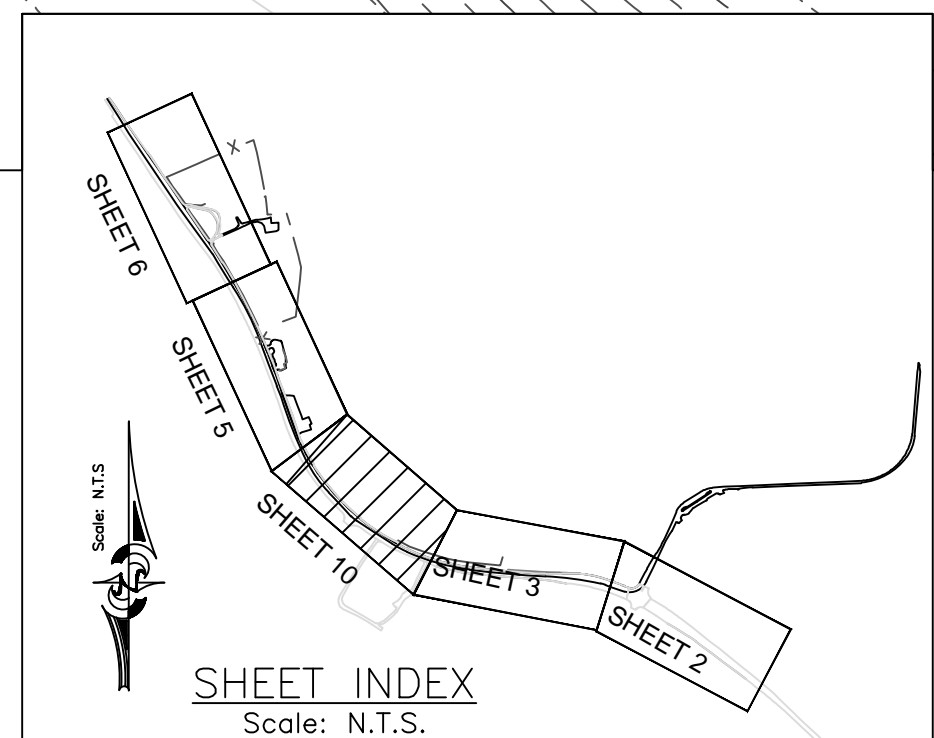
WET SWALE DETAIL



NOTES:
 1. Stone shall be D₅₀=18" MSHA Class III. Voids shall be chinked with smaller select stone (D₅₀=6").
 2. Field tolerance for field heights (H₁, H₂) to be 3'+/-.

STEP POOL DETAILS
 Scale: N.T.S.

F:\Little Bennett Trail Connector\42520_CAD\Design_30_Site plan REV1.dwg, Sheet 10, 30 scale STREAM, Plotted By: Hoang Ta, 9/9/2015, 11:55 AM



CPJ
 Associates

DESIGN

JF	date	JF	date
Landscape Architect	Checked by	NA	Checked by
Architect	date	Engineer	date
HT/GSM	Checked by	JF	Checked by
Drawn by	date		

REVIEW AND APPROVAL

park development division	date	superintendent of parks	date
central maintenance	date	park police	date
region	date		date
natural resources	date		date

REVIEW AND APPROVAL

	date		date
	date		date
	date		date



The Maryland-National Capital
 Park and Planning Commission
 Montgomery County Department of Parks
 9500 Brunett Avenue
 Silver Spring, Maryland 20901
 (301) 495-2535

ISSUED FOR PROCUREMENT ON

REVISIONS	Rev. No.	Date	Description

**Little Bennett Regional Park Trail Connector
 30% Facility Plans
 Stream/Outfall Stabilization Concept Plan**

Scale: As Shown
 Date: 4/20/15

Parcel: P999 P100 P426
 P380 P133 P195 P141
 P020 P555

Tax Map: ew22
 ew23

SP
 SHT. # 10 of 10
 DWG. # of