



# **OVID HAZEN WELLS RECREATIONAL PARK CONCEPT DESIGN**

## **ROUND HOUSE, PAVILION, AND MAINTENANCE**



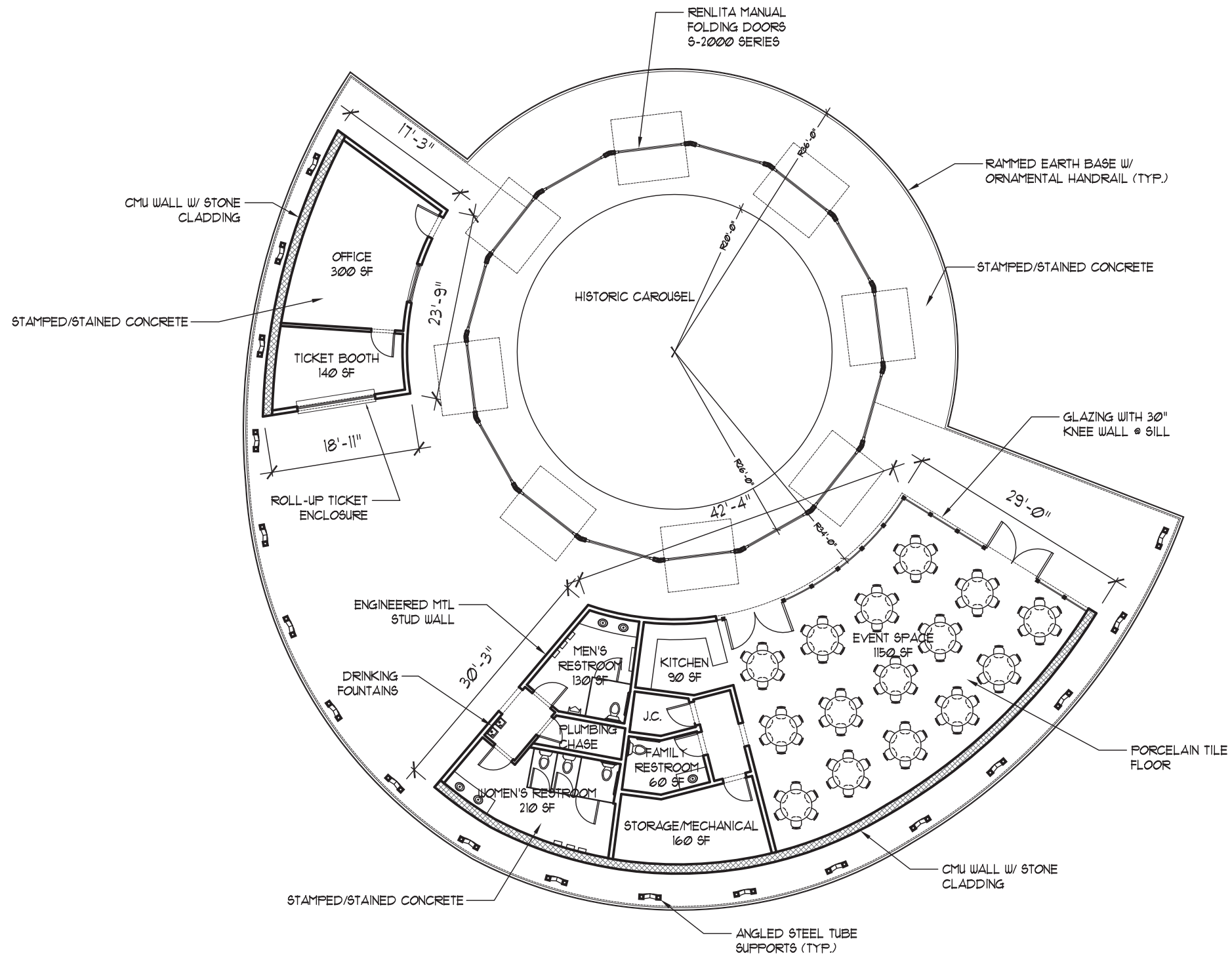
The Maryland - National Capital  
Park and Planning Commission



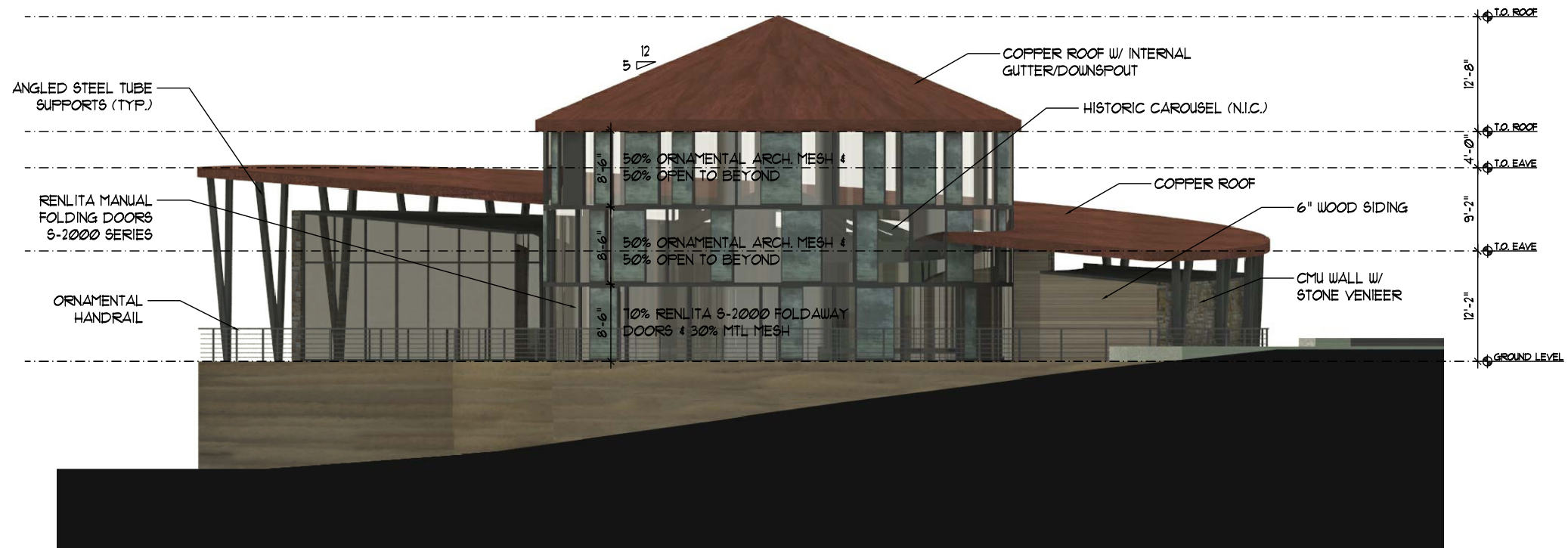




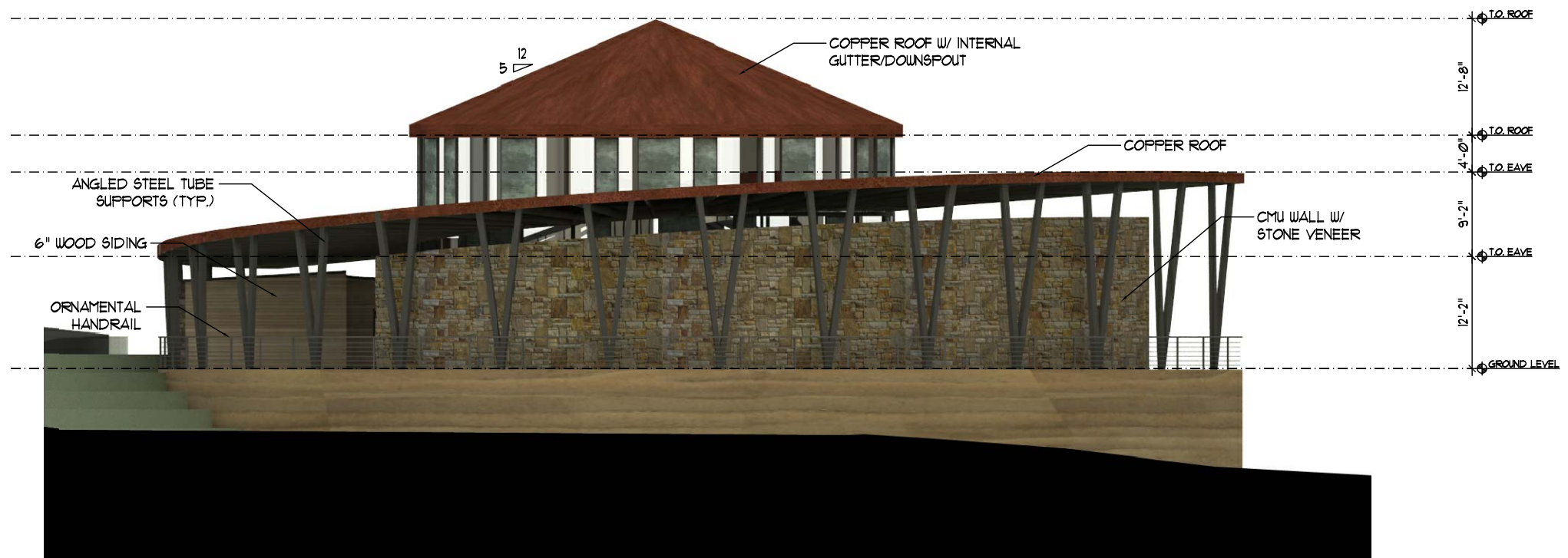




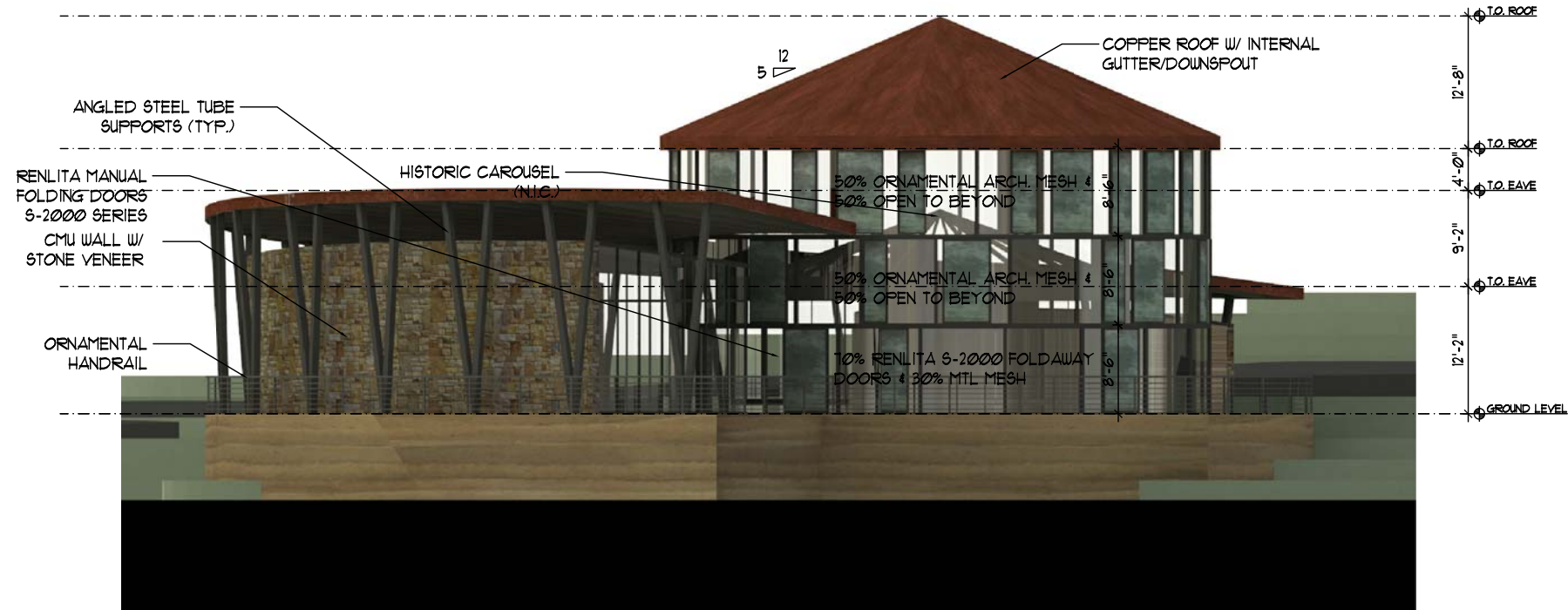




**NORTH ELEVATION**



**SOUTH ELEVATION**

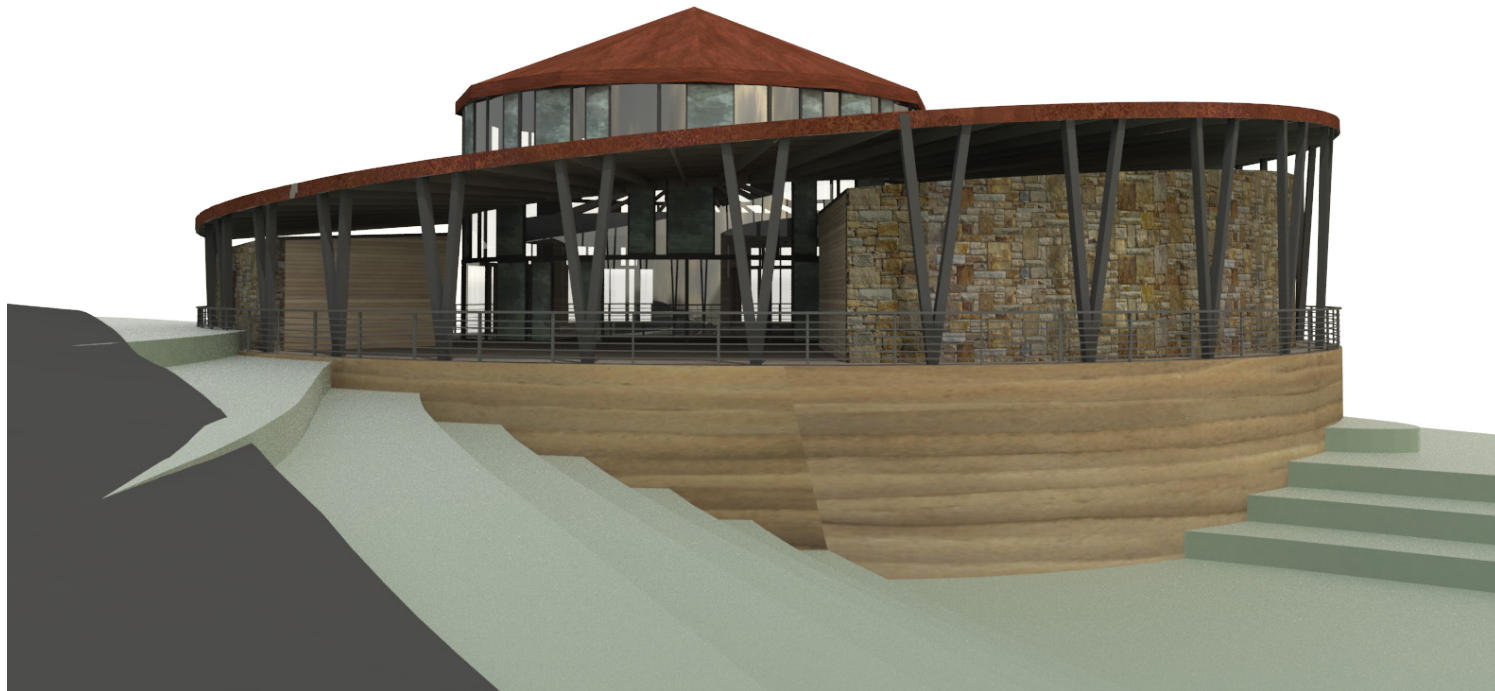


**EAST ELEVATION**

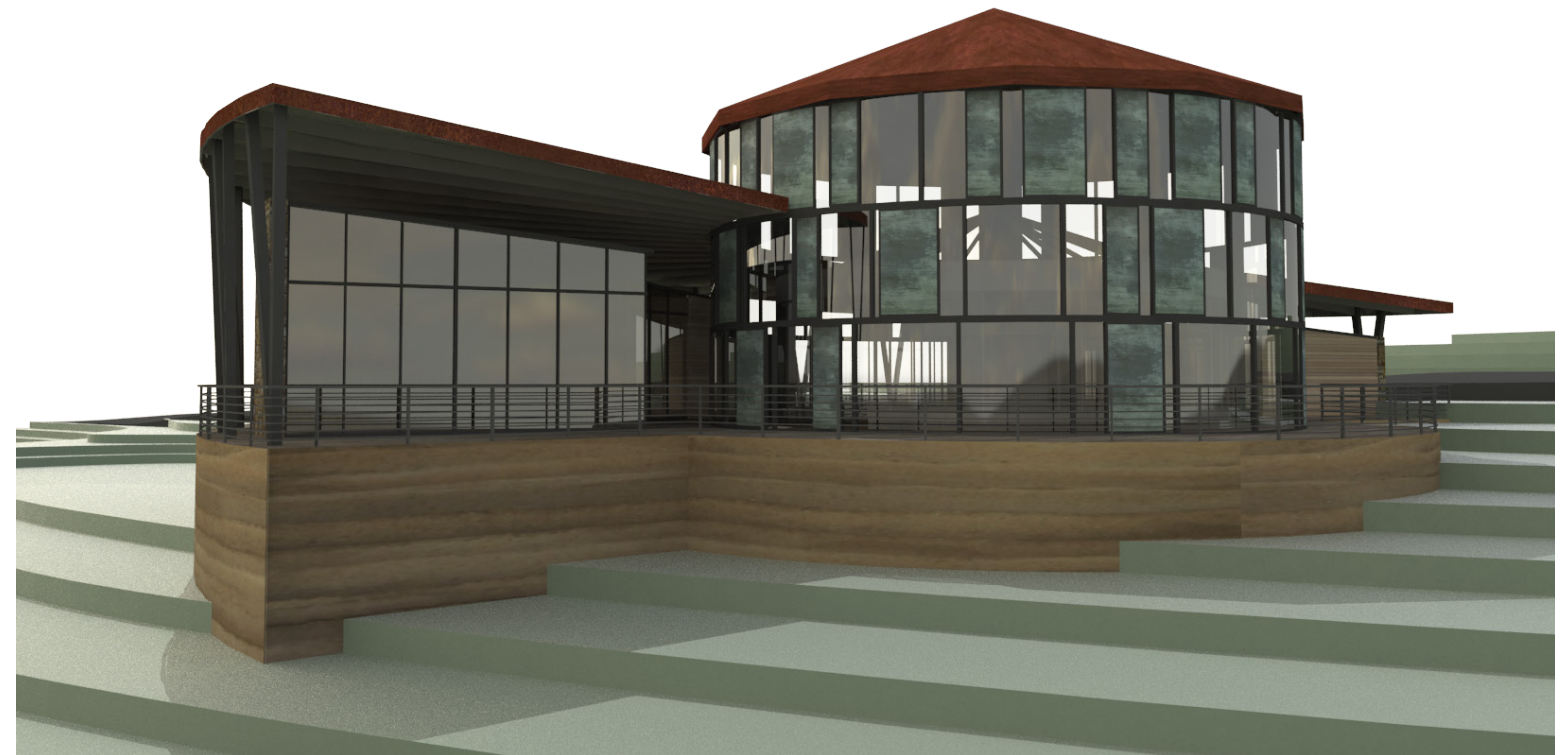


**WEST ELEVATION**

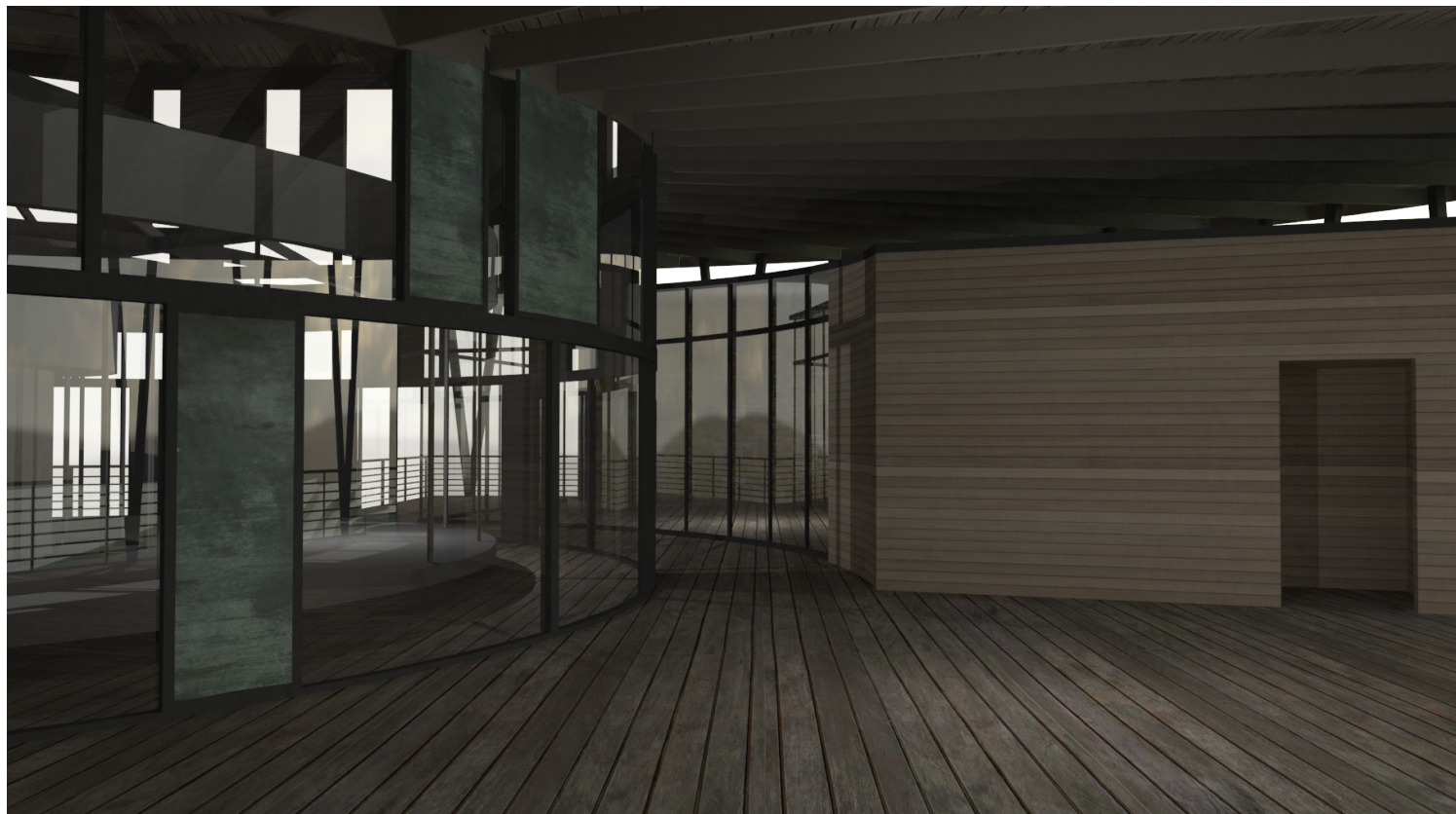




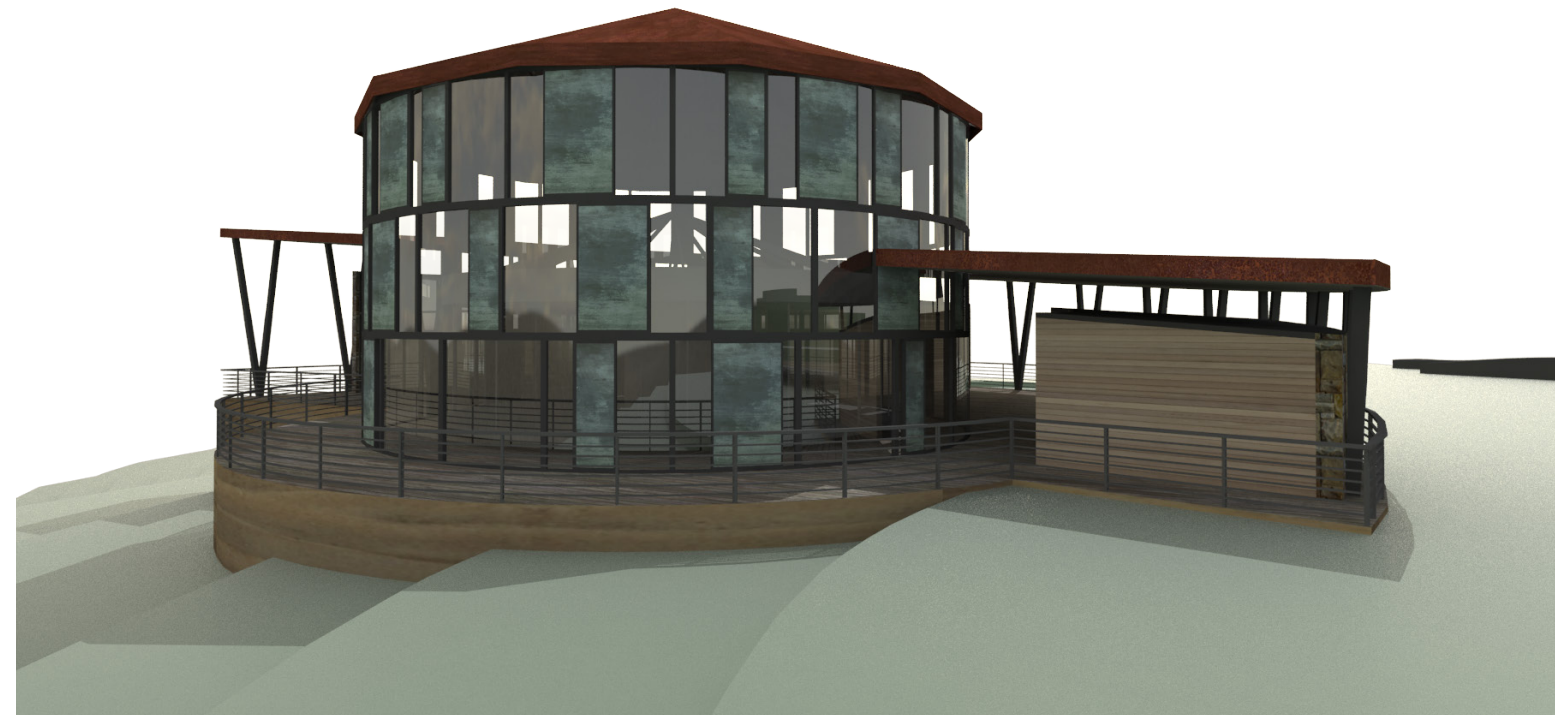
**VIEW FROM PARKING**



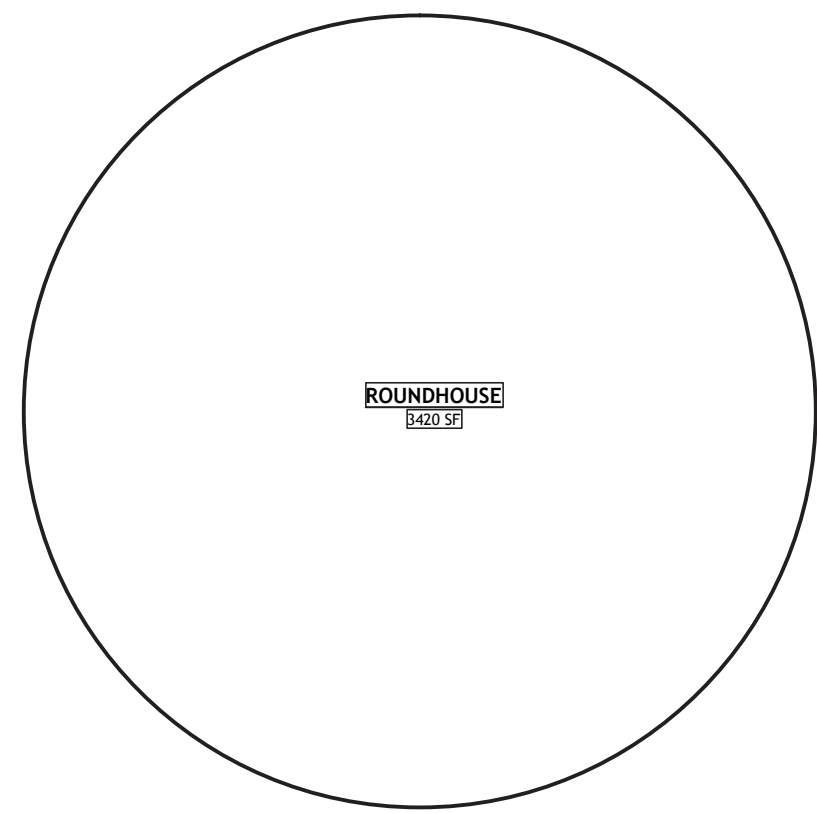
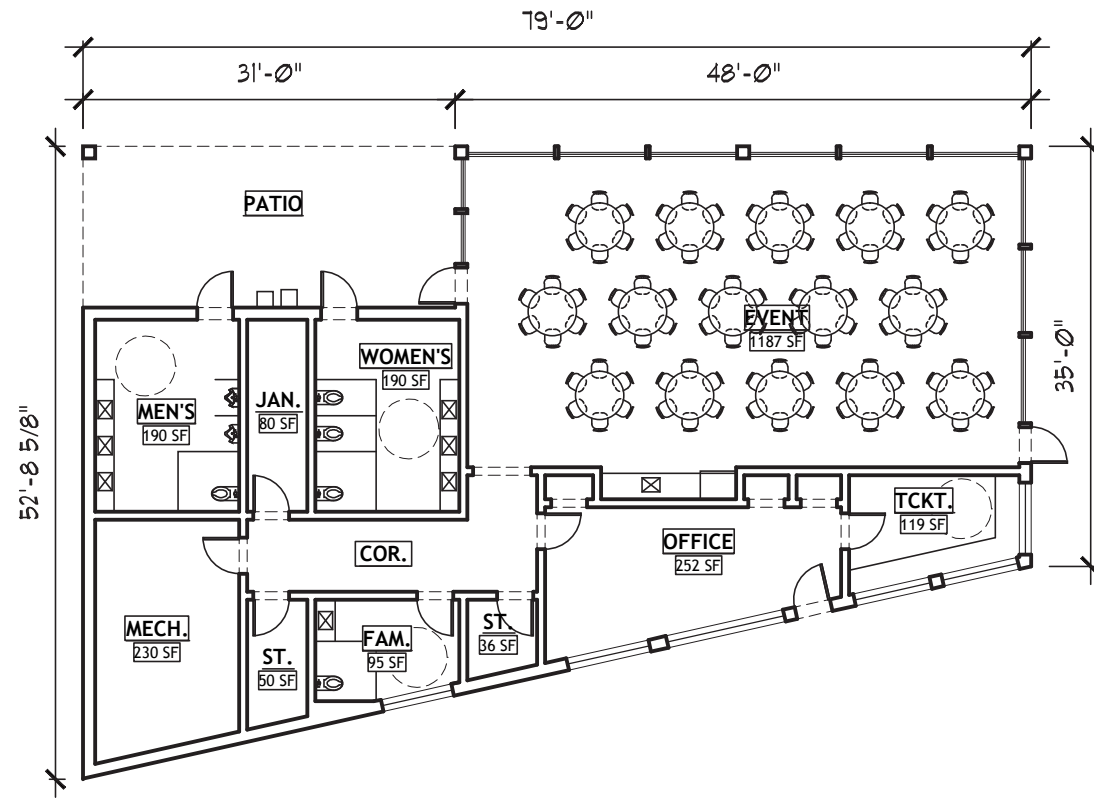
**VIEW FROM VALLEY**



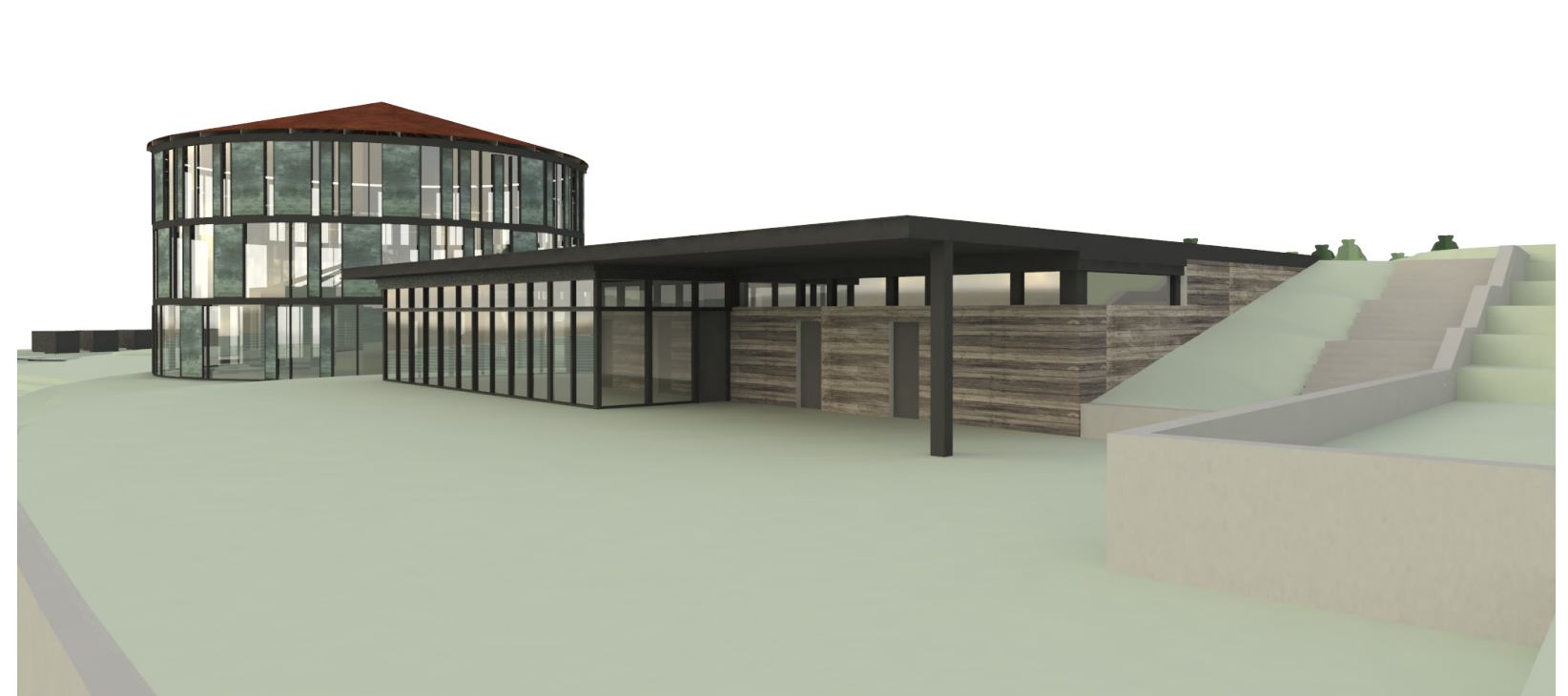
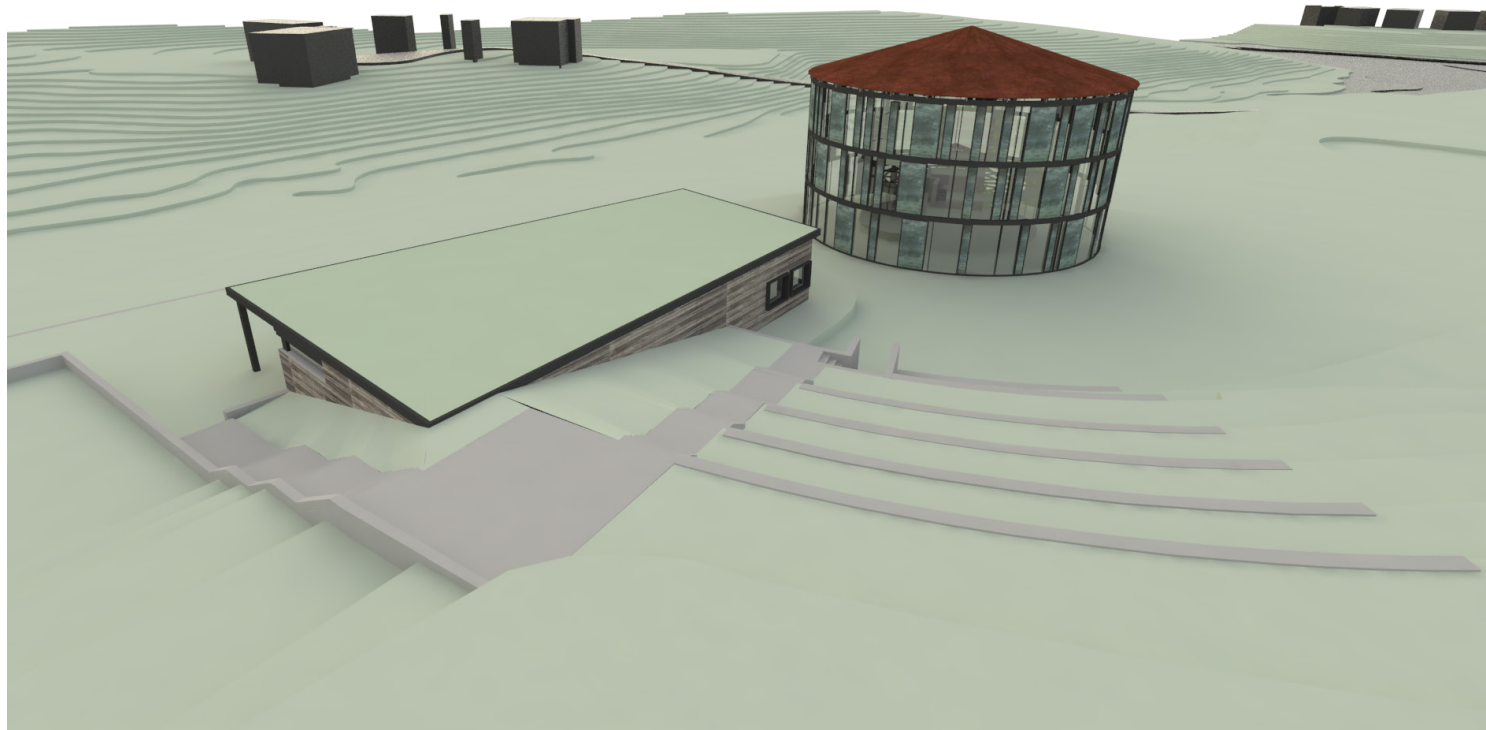
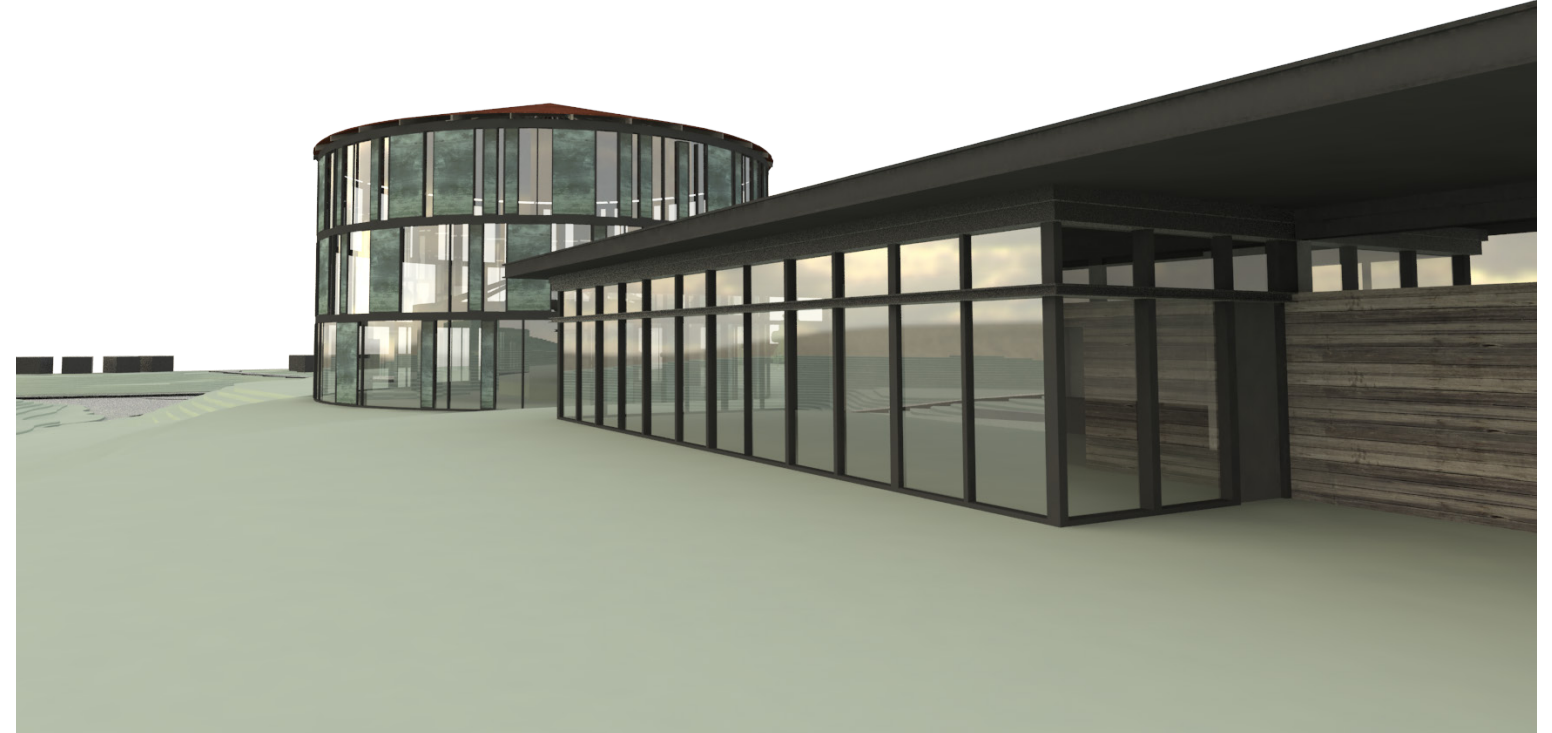
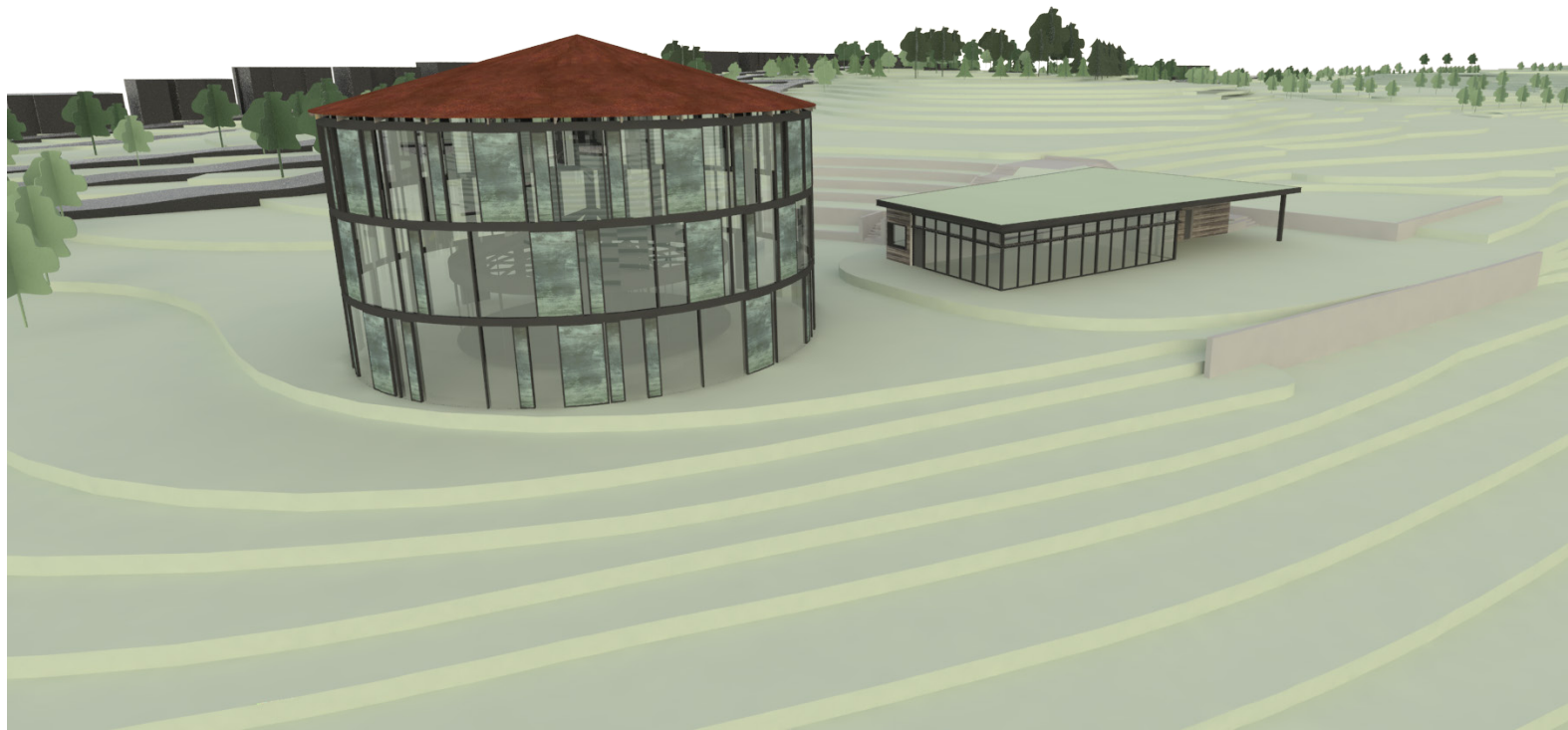
**VIEW TO EVENT SPACE AND HISTORIC CAROUSEL**



**VIEW FROM EXISTING SIDEWALK**



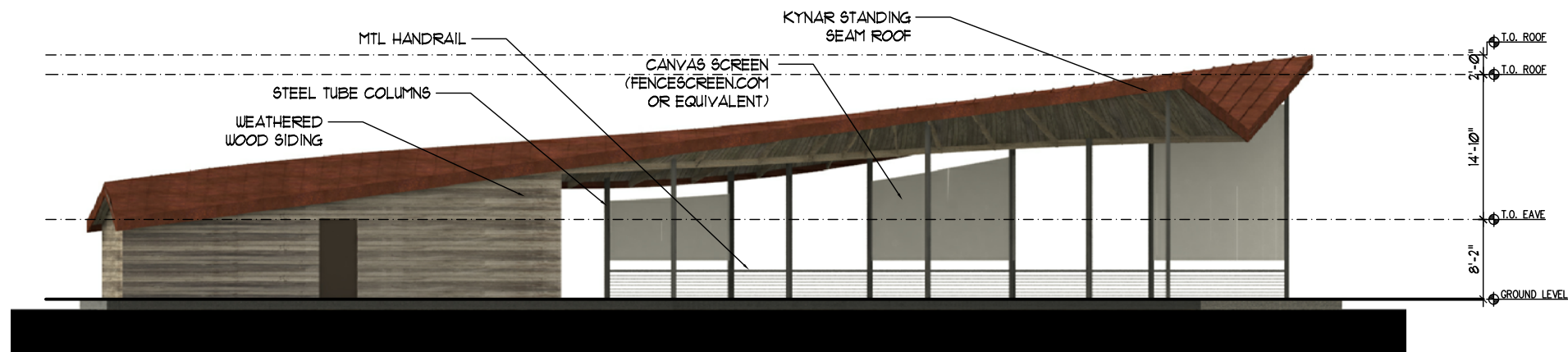




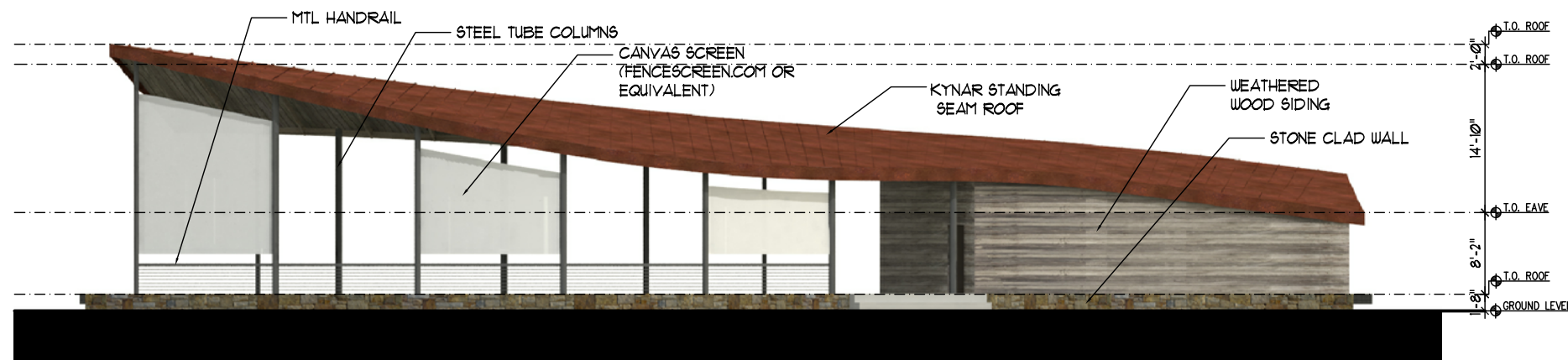






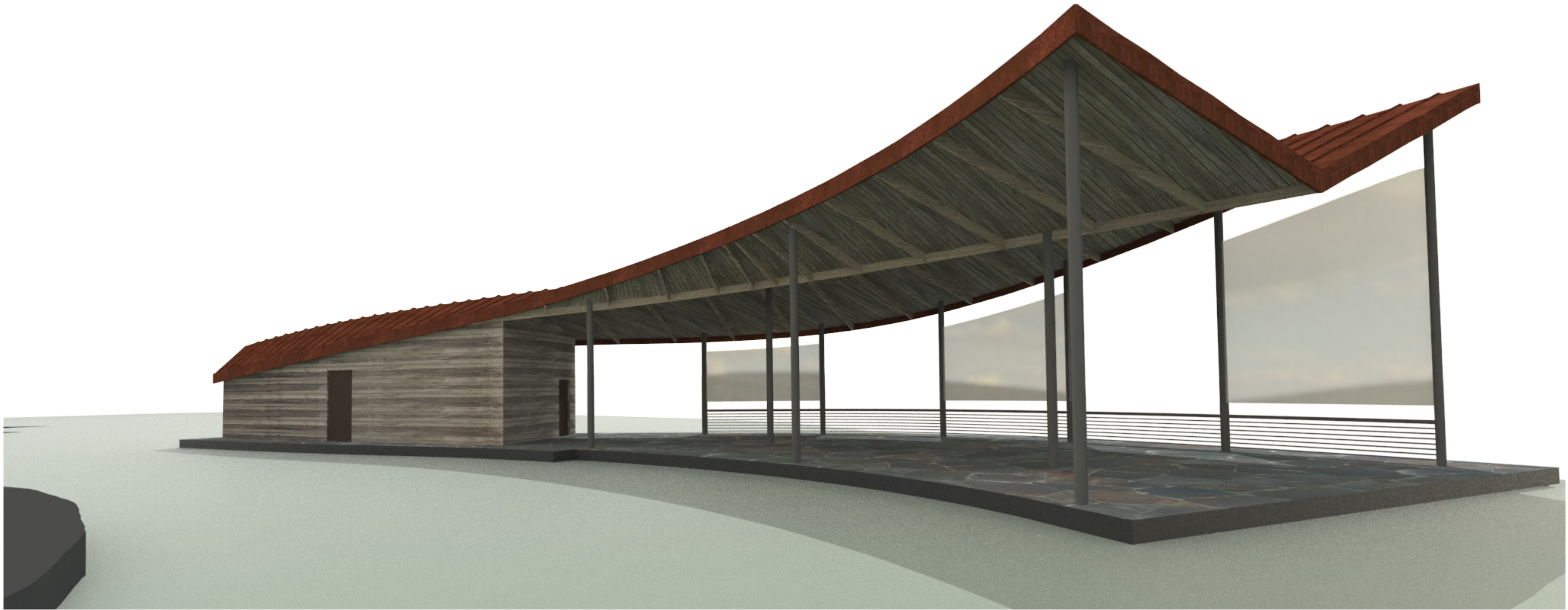


**SOUTH ELEVATION**



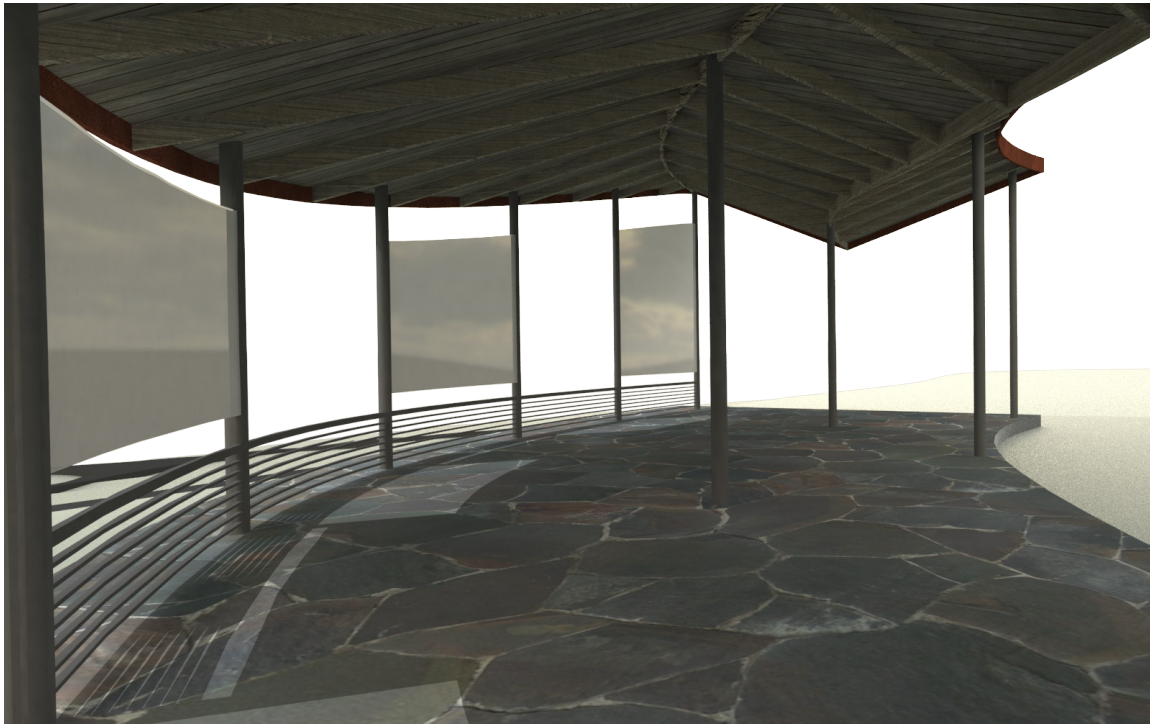
**NORTH ELEVATION**



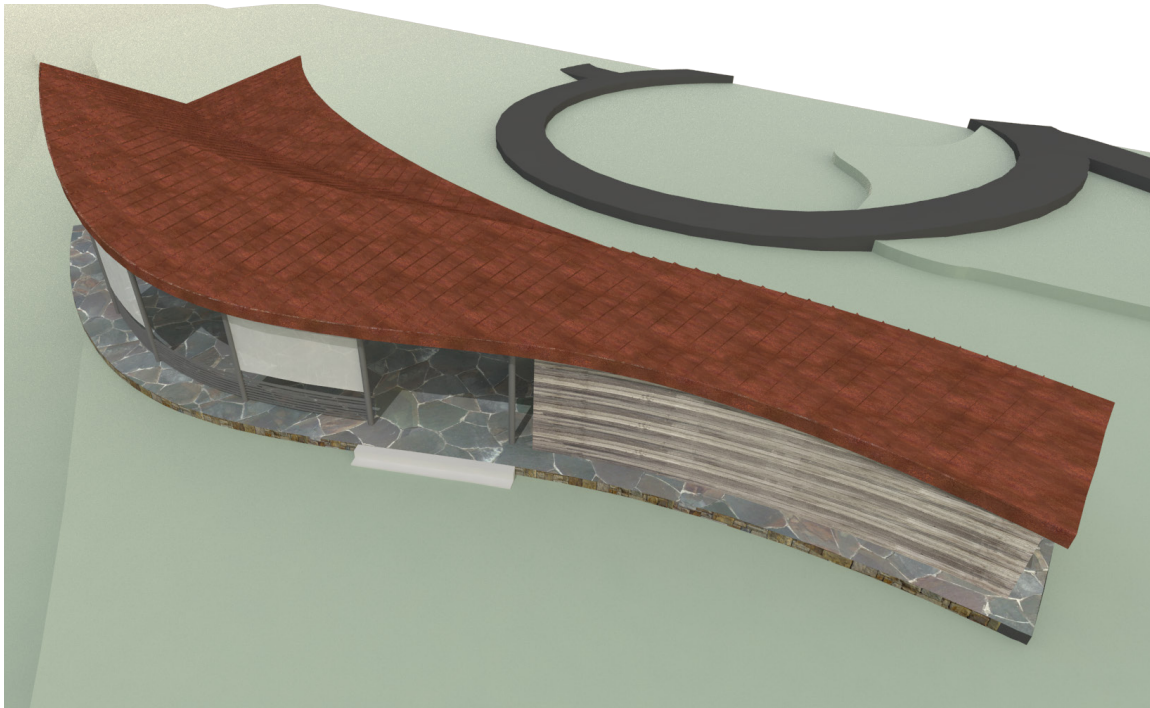


**VIEW FROM MAIN GREEN**

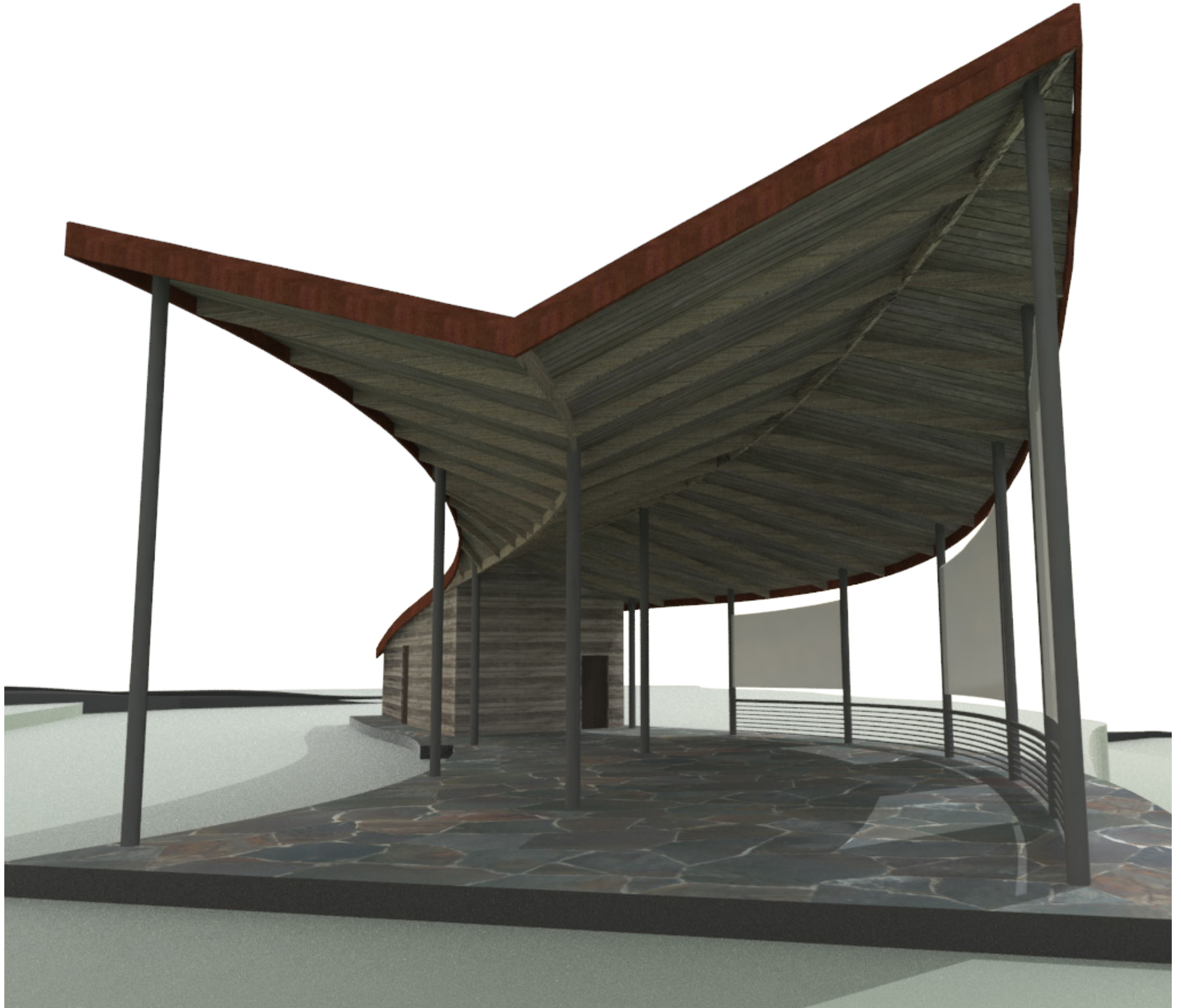




**INSIDE PAVILION**

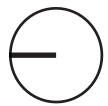
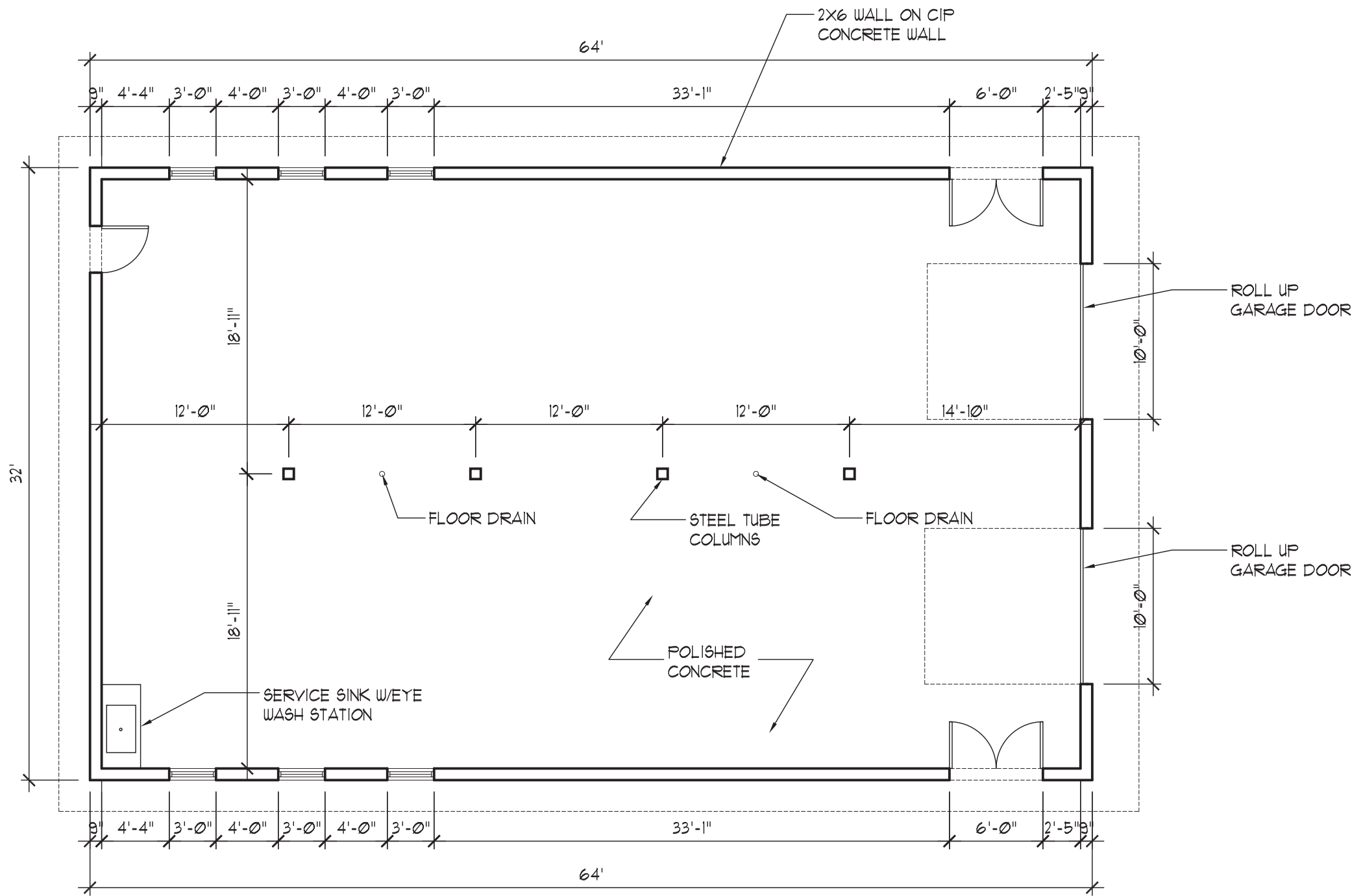


**VIEW OF ROOF FORM**

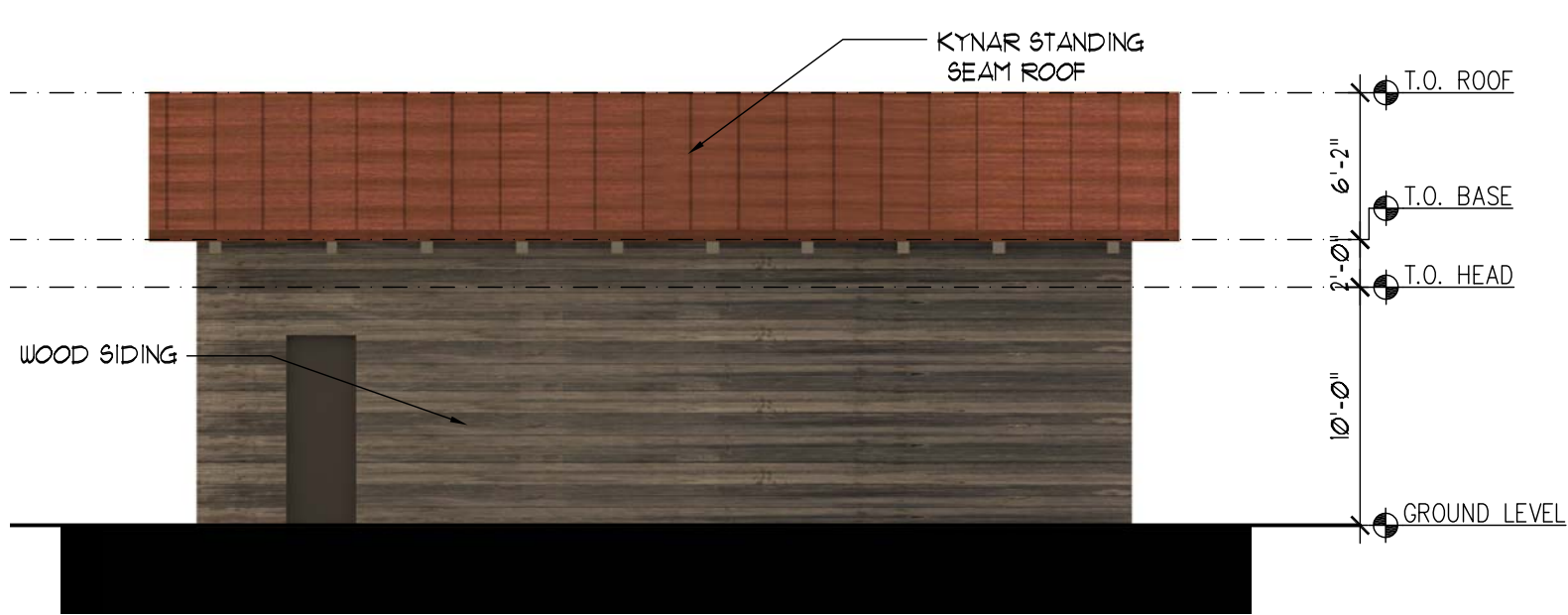


**VIEW OF STRUCTURAL SPINE**

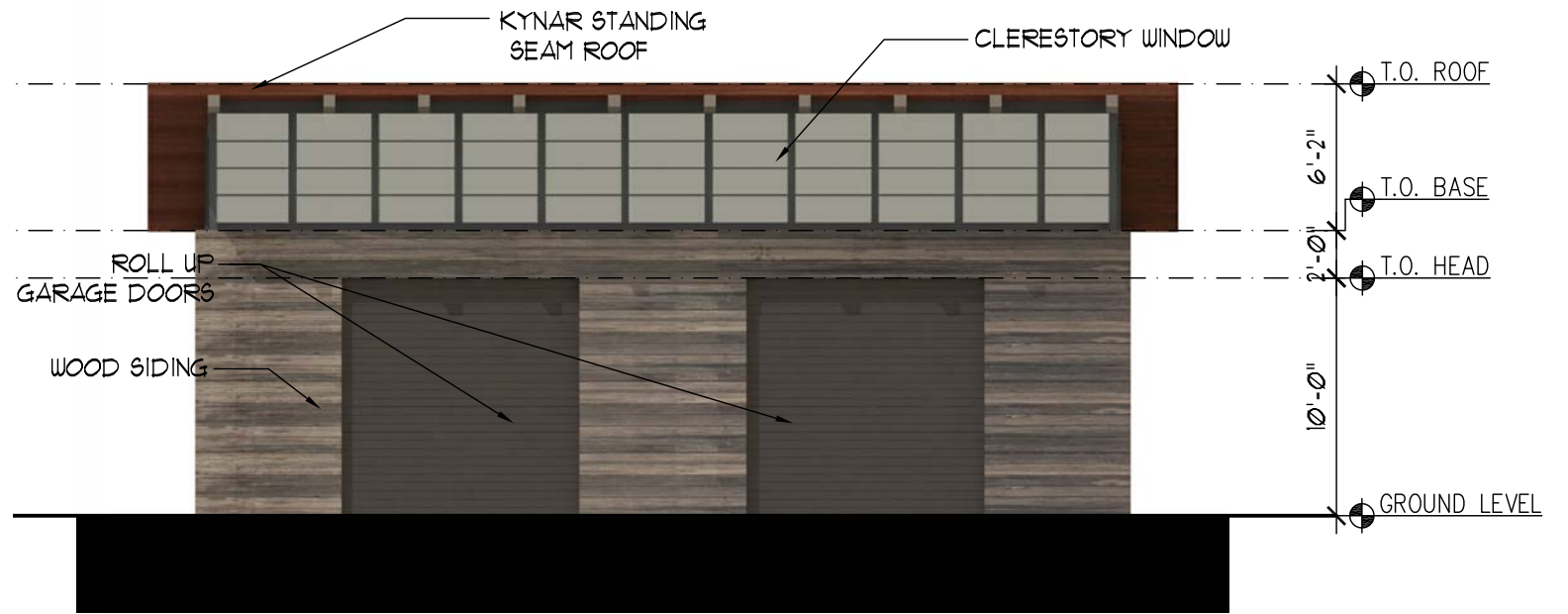




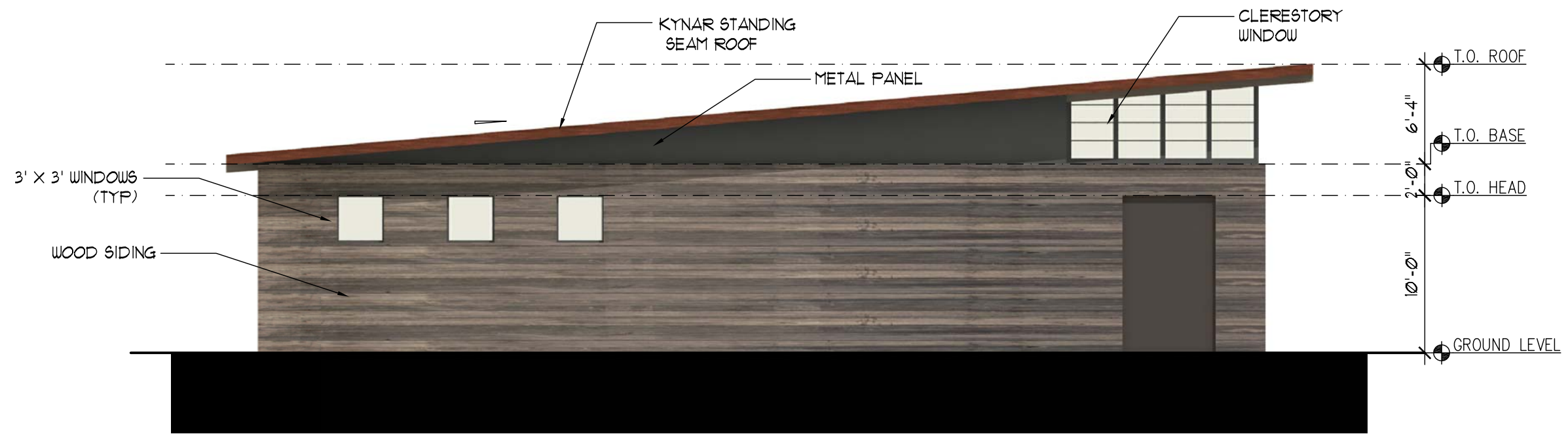




**NORTH ELEVATION**



**SOUTH ELEVATION**



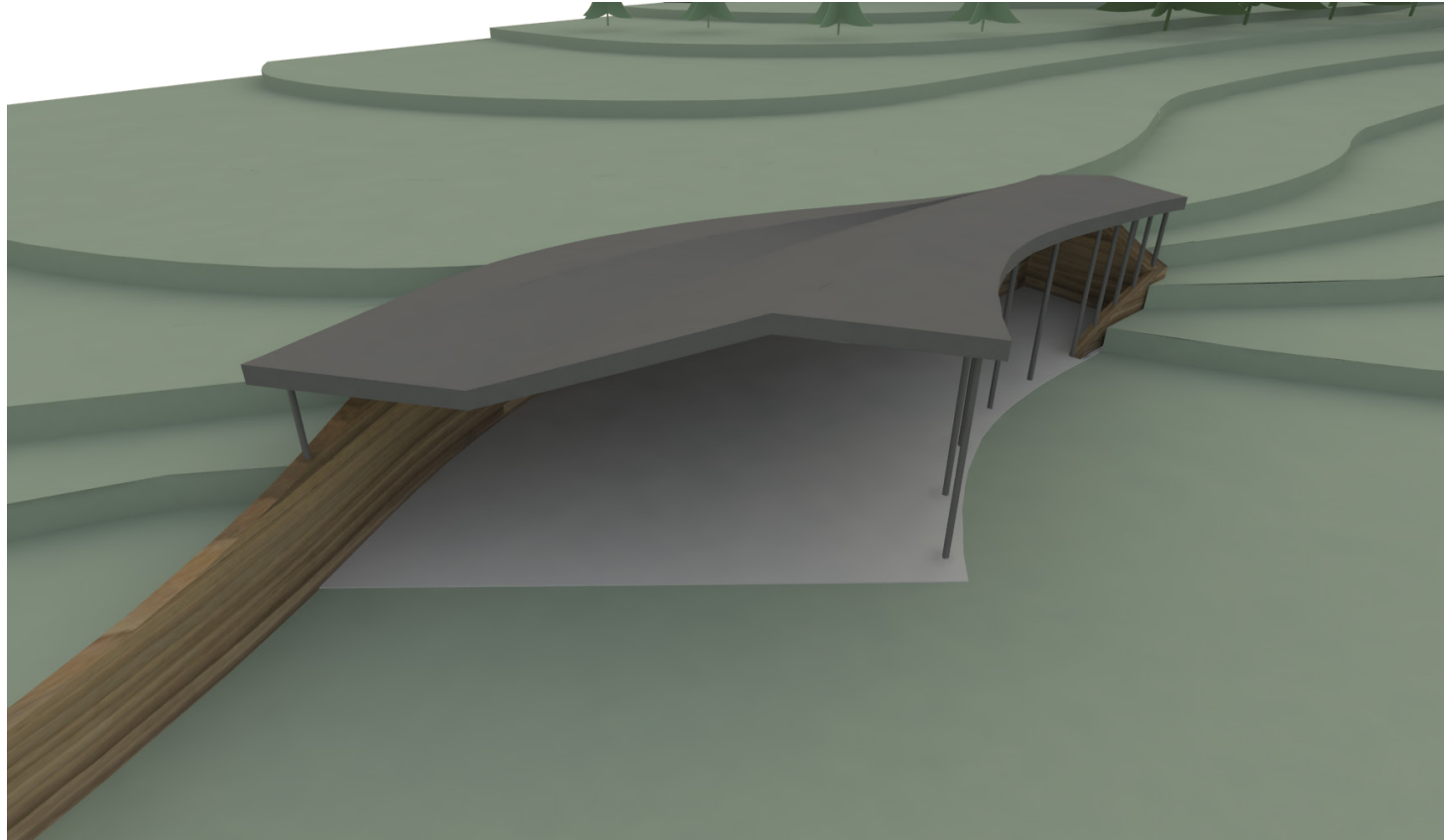
**WEST ELEVATION**



**VIEW FROM PARKING LOT**



**SUBMERGED PAVILION:  
1,300 SF**



**SMALL PAVILION:  
1,000 SF**

