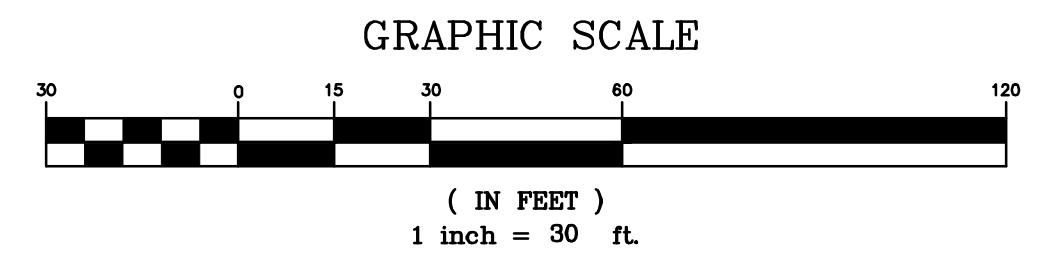


**LEGEND:**

● TREES TO BE SAVED

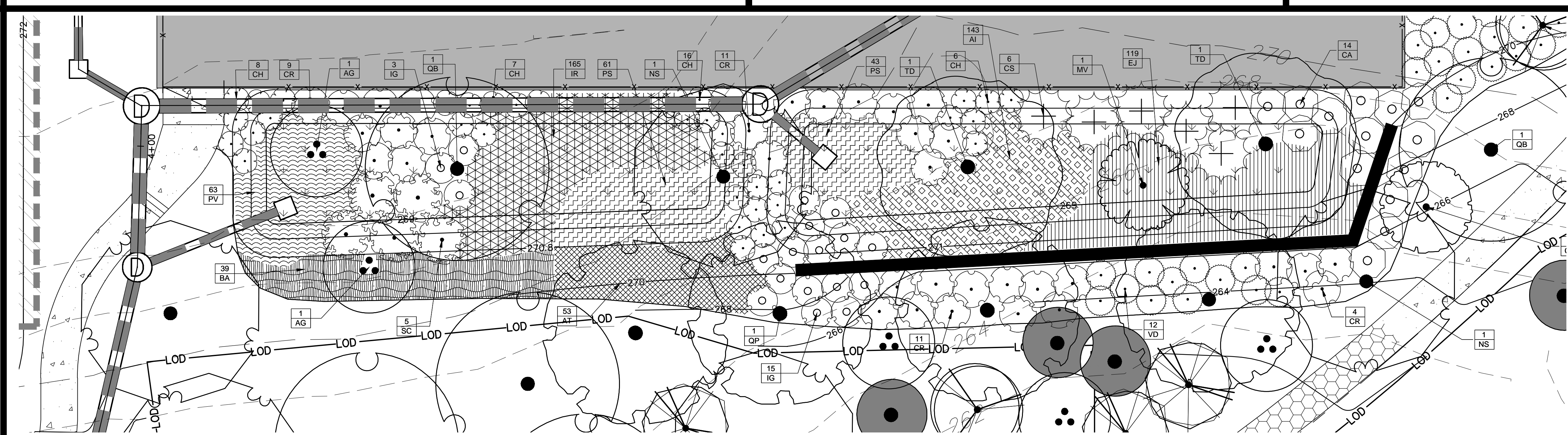
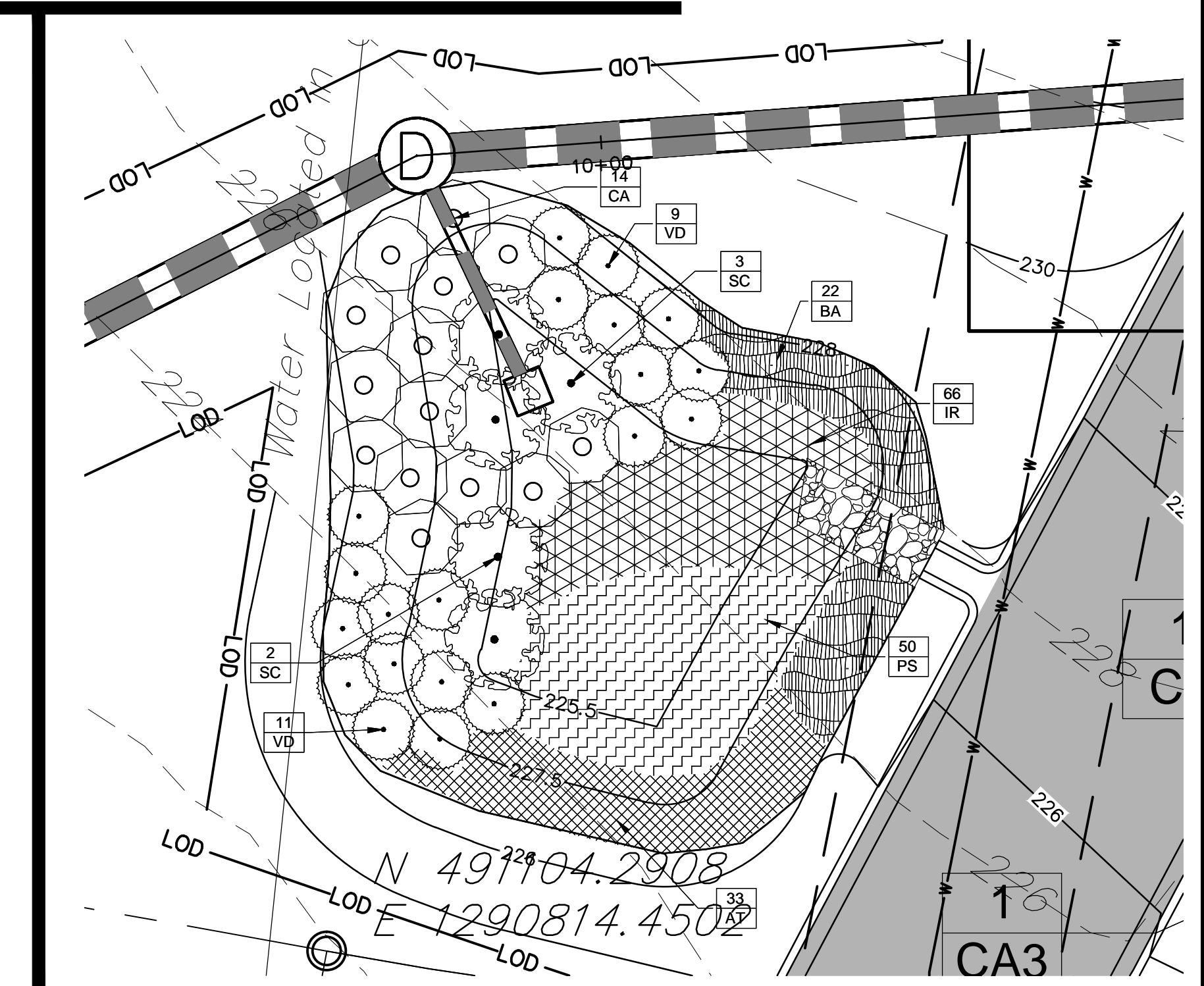
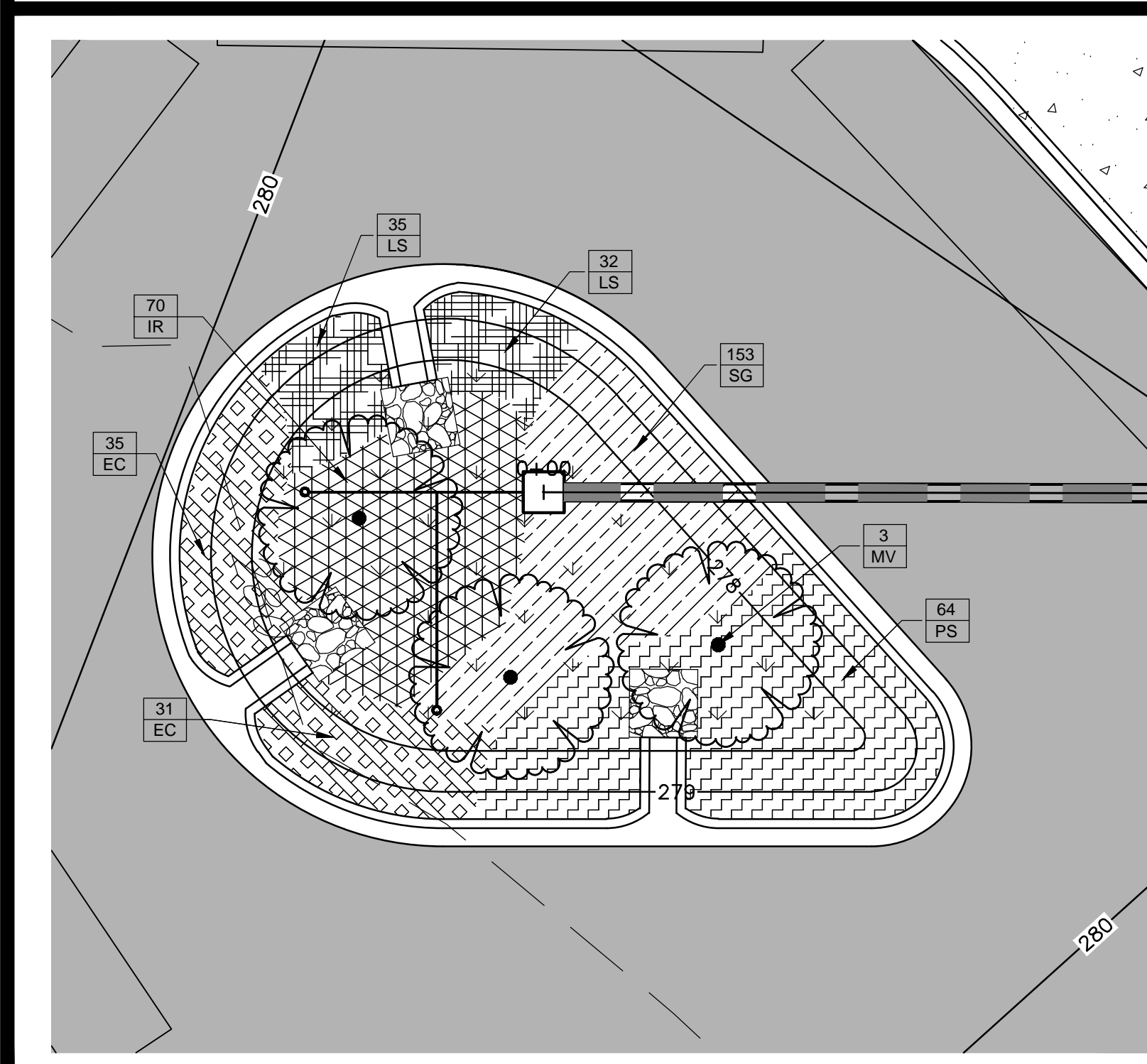
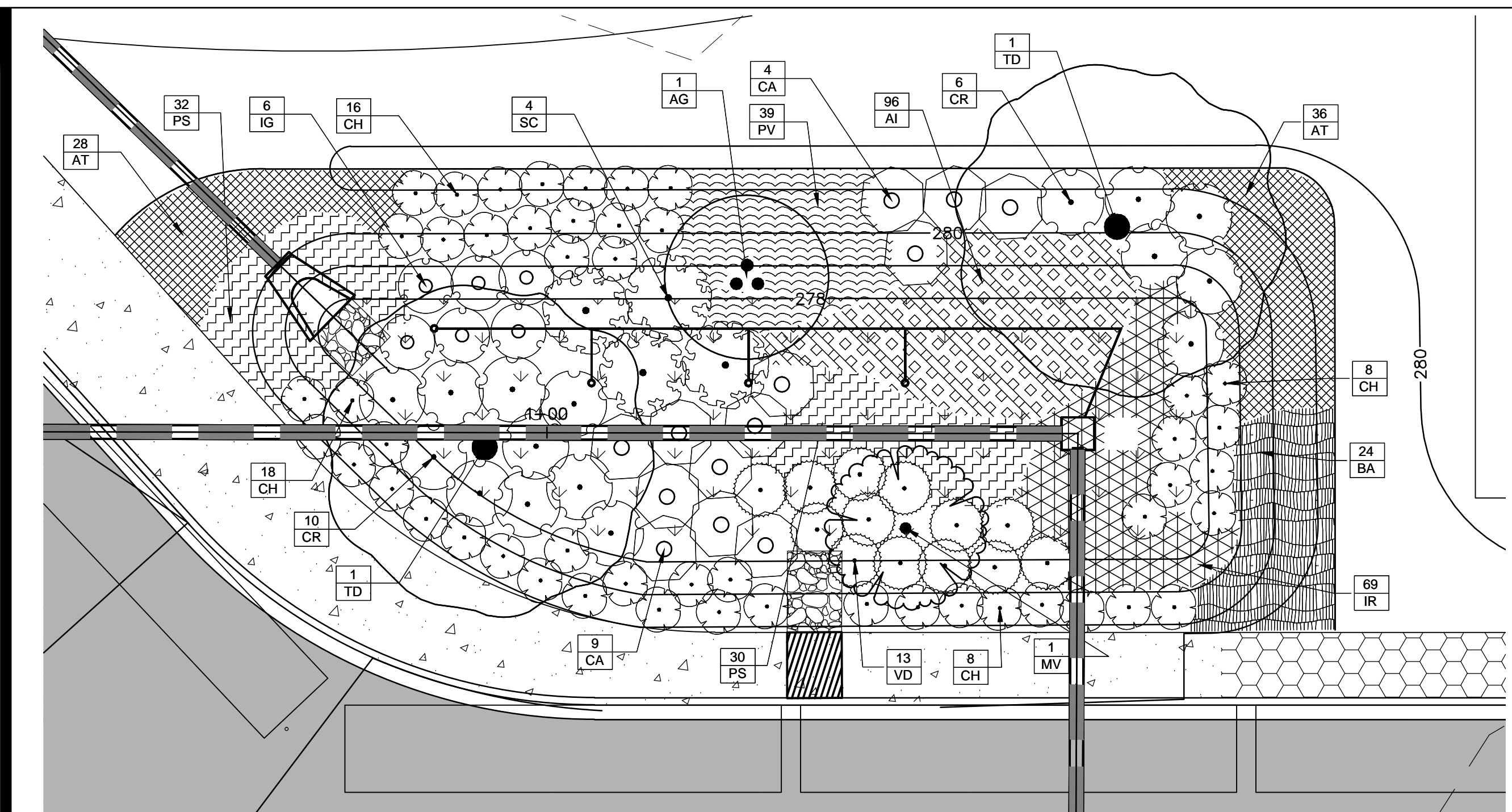
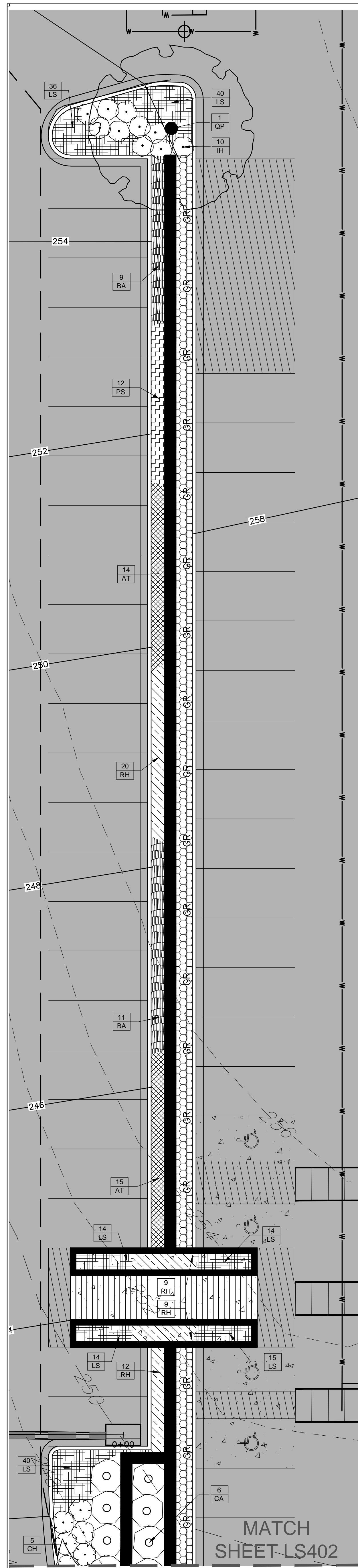


**PLANT SCHEDULE**

NO.	SYMBOL	PLANT NAME / COMMENTS	QTY	SIZE
01	(Symbol)	1' 0" REDWOOD / 1" DBH	1	1" DBH
02	(Symbol)	1' 0" REDWOOD / 1" DBH	1	1" DBH
03	(Symbol)	1' 0" REDWOOD / 1" DBH	1	1" DBH
04	(Symbol)	1' 0" REDWOOD / 1" DBH	1	1" DBH
05	(Symbol)	1' 0" REDWOOD / 1" DBH	1	1" DBH
06	(Symbol)	1' 0" REDWOOD / 1" DBH	1	1" DBH
07	(Symbol)	1' 0" REDWOOD / 1" DBH	1	1" DBH
08	(Symbol)	1' 0" REDWOOD / 1" DBH	1	1" DBH
09	(Symbol)	1' 0" REDWOOD / 1" DBH	1	1" DBH
10	(Symbol)	1' 0" REDWOOD / 1" DBH	1	1" DBH
11	(Symbol)	1' 0" REDWOOD / 1" DBH	1	1" DBH
12	(Symbol)	1' 0" REDWOOD / 1" DBH	1	1" DBH
13	(Symbol)	1' 0" REDWOOD / 1" DBH	1	1" DBH
14	(Symbol)	1' 0" REDWOOD / 1" DBH	1	1" DBH
15	(Symbol)	1' 0" REDWOOD / 1" DBH	1	1" DBH
16	(Symbol)	1' 0" REDWOOD / 1" DBH	1	1" DBH
17	(Symbol)	1' 0" REDWOOD / 1" DBH	1	1" DBH
18	(Symbol)	1' 0" REDWOOD / 1" DBH	1	1" DBH
19	(Symbol)	1' 0" REDWOOD / 1" DBH	1	1" DBH
20	(Symbol)	1' 0" REDWOOD / 1" DBH	1	1" DBH
21	(Symbol)	1' 0" REDWOOD / 1" DBH	1	1" DBH
22	(Symbol)	1' 0" REDWOOD / 1" DBH	1	1" DBH
23	(Symbol)	1' 0" REDWOOD / 1" DBH	1	1" DBH
24	(Symbol)	1' 0" REDWOOD / 1" DBH	1	1" DBH
25	(Symbol)	1' 0" REDWOOD / 1" DBH	1	1" DBH
26	(Symbol)	1' 0" REDWOOD / 1" DBH	1	1" DBH
27	(Symbol)	1' 0" REDWOOD / 1" DBH	1	1" DBH
28	(Symbol)	1' 0" REDWOOD / 1" DBH	1	1" DBH
29	(Symbol)	1' 0" REDWOOD / 1" DBH	1	1" DBH
30	(Symbol)	1' 0" REDWOOD / 1" DBH	1	1" DBH
31	(Symbol)	1' 0" REDWOOD / 1" DBH	1	1" DBH
32	(Symbol)	1' 0" REDWOOD / 1" DBH	1	1" DBH
33	(Symbol)	1' 0" REDWOOD / 1" DBH	1	1" DBH
34	(Symbol)	1' 0" REDWOOD / 1" DBH	1	1" DBH
35	(Symbol)	1' 0" REDWOOD / 1" DBH	1	1" DBH
36	(Symbol)	1' 0" REDWOOD / 1" DBH	1	1" DBH
37	(Symbol)	1' 0" REDWOOD / 1" DBH	1	1" DBH
38	(Symbol)	1' 0" REDWOOD / 1" DBH	1	1" DBH
39	(Symbol)	1' 0" REDWOOD / 1" DBH	1	1" DBH
40	(Symbol)	1' 0" REDWOOD / 1" DBH	1	1" DBH
41	(Symbol)	1' 0" REDWOOD / 1" DBH	1	1" DBH
42	(Symbol)	1' 0" REDWOOD / 1" DBH	1	1" DBH
43	(Symbol)	1' 0" REDWOOD / 1" DBH	1	1" DBH
44	(Symbol)	1' 0" REDWOOD / 1" DBH	1	1" DBH
45	(Symbol)	1' 0" REDWOOD / 1" DBH	1	1" DBH
46	(Symbol)	1' 0" REDWOOD / 1" DBH	1	1" DBH
47	(Symbol)	1' 0" REDWOOD / 1" DBH	1	1" DBH
48	(Symbol)	1' 0" REDWOOD / 1" DBH	1	1" DBH
49	(Symbol)	1' 0" REDWOOD / 1" DBH	1	1" DBH
50	(Symbol)	1' 0" REDWOOD / 1" DBH	1	1" DBH
51	(Symbol)	1' 0" REDWOOD / 1" DBH	1	1" DBH
52	(Symbol)	1' 0" REDWOOD / 1" DBH	1	1" DBH
53	(Symbol)	1' 0" REDWOOD / 1" DBH	1	1" DBH
54	(Symbol)	1' 0" REDWOOD / 1" DBH	1	1" DBH
55	(Symbol)	1' 0" REDWOOD / 1" DBH	1	1" DBH
56	(Symbol)	1' 0" REDWOOD / 1" DBH	1	1" DBH
57	(Symbol)	1' 0" REDWOOD / 1" DBH	1	1" DBH
58	(Symbol)	1' 0" REDWOOD / 1" DBH	1	1" DBH
59	(Symbol)	1' 0" REDWOOD / 1" DBH	1	1" DBH
60	(Symbol)	1' 0" REDWOOD / 1" DBH	1	1" DBH
61	(Symbol)	1' 0" REDWOOD / 1" DBH	1	1" DBH
62	(Symbol)	1' 0" REDWOOD / 1" DBH	1	1" DBH
63	(Symbol)	1' 0" REDWOOD / 1" DBH	1	1" DBH
64	(Symbol)	1' 0" REDWOOD / 1" DBH	1	1" DBH
65	(Symbol)	1' 0" REDWOOD / 1" DBH	1	1" DBH
66	(Symbol)	1' 0" REDWOOD / 1" DBH	1	1" DBH
67	(Symbol)	1' 0" REDWOOD / 1" DBH	1	1" DBH
68	(Symbol)	1' 0" REDWOOD / 1" DBH	1	1" DBH
69	(Symbol)	1' 0" REDWOOD / 1" DBH	1	1" DBH
70	(Symbol)	1' 0" REDWOOD / 1" DBH	1	1" DBH
71	(Symbol)	1' 0" REDWOOD / 1" DBH	1	1" DBH
72	(Symbol)	1' 0" REDWOOD / 1" DBH	1	1" DBH
73	(Symbol)	1' 0" REDWOOD / 1" DBH	1	1" DBH
74	(Symbol)	1' 0" REDWOOD / 1" DBH	1	1" DBH
75	(Symbol)	1' 0" REDWOOD / 1" DBH	1	1" DBH
76	(Symbol)	1' 0" REDWOOD / 1" DBH	1	1" DBH
77	(Symbol)	1' 0" REDWOOD / 1" DBH	1	1" DBH
78	(Symbol)	1' 0" REDWOOD / 1" DBH	1	1" DBH
79	(Symbol)	1' 0" REDWOOD / 1" DBH	1	1" DBH
80	(Symbol)	1' 0" REDWOOD / 1" DBH	1	1" DBH
81	(Symbol)	1' 0" REDWOOD / 1" DBH	1	1" DBH
82	(Symbol)	1' 0" REDWOOD / 1" DBH	1	1" DBH
83	(Symbol)	1' 0" REDWOOD / 1" DBH	1	1" DBH
84	(Symbol)	1' 0" REDWOOD / 1" DBH	1	1" DBH
85	(Symbol)	1' 0" REDWOOD / 1" DBH	1	1" DBH
86	(Symbol)	1' 0" REDWOOD / 1" DBH	1	1" DBH
87	(Symbol)	1' 0" REDWOOD / 1" DBH	1	1" DBH
88	(Symbol)	1' 0" REDWOOD / 1" DBH	1	1" DBH
89	(Symbol)	1' 0" REDWOOD / 1" DBH	1	1" DBH
90	(Symbol)	1' 0" REDWOOD / 1" DBH	1	1" DBH
91	(Symbol)	1' 0" REDWOOD / 1" DBH	1	1" DBH
92	(Symbol)	1' 0" REDWOOD / 1" DBH	1	1" DBH
93	(Symbol)	1' 0" REDWOOD / 1" DBH	1	1" DBH
94	(Symbol)	1' 0" REDWOOD / 1" DBH	1	1" DBH
95	(Symbol)	1' 0" REDWOOD / 1" DBH	1	1" DBH
96	(Symbol)	1' 0" REDWOOD / 1" DBH	1	1" DBH
97	(Symbol)	1' 0" REDWOOD / 1" DBH	1	1" DBH
98	(Symbol)	1' 0" REDWOOD / 1" DBH	1	1" DBH
99	(Symbol)	1' 0" REDWOOD / 1" DBH	1	1" DBH
100	(Symbol)	1' 0" REDWOOD / 1" DBH	1	1" DBH

**BETHESDA-CHEVY CHASE MIDDLE SCHOOL #2**

**CONSTRUCTION DOCUMENTS 95% SUBMISSION**



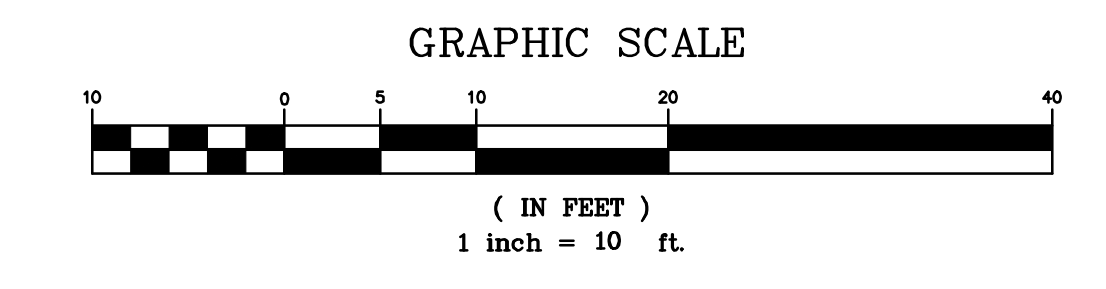
**GENERAL PLANTING NOTES:**

1. THIS PLAN IS FOR PLANTING PURPOSES ONLY, AND ANY OTHER INFORMATION SHOWN IS FOR REFERENCE ONLY. SEE SITE PLAN FOR INFORMATION ABOUT ALL LAYOUT, GRADING AND OTHER SITE IMPROVEMENTS.
2. CALL MISS UTILITY AT 811 OR 1-800-257-7777 TO MARK UTILITIES AT LEAST 48 HOURS BEFORE DIGGING.
3. All materials and planting procedures except as otherwise noted shall conform to the latest edition of "LANDSCAPE SPECIFICATION GUIDELINES" by the Landscape Contractors Association MD-DC-VA.
4. Plants shall conform to the current edition of the American Standard for Nursery Stock, (ANSI z60.1)
5. Plant names shall be those given in the latest edition of Standard Plant Names, American Committee on Horticultural Nomenclature.
6. Topsoil shall meet specifications as per the 2011 MD Standards and Specifications for Soil Erosion and Sediment Control.
7. The Contractor shall submit representative soil samples from both in-situ soils and soils brought in from off-site to a state licensed testing laboratory. The Contractor shall incorporate or apply soil amendments and fertilization based upon results of the soil tests and recommendations by the test lab.
8. The Contractor shall apply grass according to the 2011 MD Standard

and Specifications for Soil Erosion and Sediment Control. Do not use Kentucky 31 tall fescue.

9. The Contractor shall stake out all planting beds and tree locations for approval by the Landscape Architect or Owner and representative before digging. It is the Contractor's responsibility to locate and coordinate plantings with all existing utilities. If discrepancies occur because of utility locations or other existing conditions the Contractor shall notify the Landscape Architect and Owner's representative immediately to coordinate any necessary adjustments.
10. All plant material shall be labeled by the nursery and delivered with labels in place for inspection. Substitutions in plant species or size will not be permitted except with the approval of the Landscape Architect and Owner. Do not prune until plant material has been planted but as soon thereafter as is advisable under standard horticultural practices. For tree pruning and care methods please refer to ANSI A-300, latest edition.
11. It is of utmost importance that all plant material be set slightly higher in relation to grade than it was grown in the nursery and with good earth to root contact. Any materials or work may be rejected by the Landscape Architect if it does not meet this or any other requirement of the specifications. Rejected materials shall be removed

- from the site by the Contractor at Contractor's expense.
12. The Contractor shall mulch and water all plants well on the day they are planted. Individual planting shall be mulched. Acceptable mulch shall be hardwood only. Mulch must be well aged, uniform in color, and free of foreign material including plant material. Well aged mulch is defined as mulch that has been stockpiled or stored for at least twelve (12) months. The Contractor shall apply the mulch uniformly to a 2 to 3 inch depth. Bark shall be kept 3 to 4 inches away from all trunks and woody stems.
13. In case of discrepancies between quantities on the plant list and the plan, the plan shall govern.
14. Sod bare areas as directed by Owner for all disturbed areas to be stabilized that are not landscaped or covered.



Sheet Title:

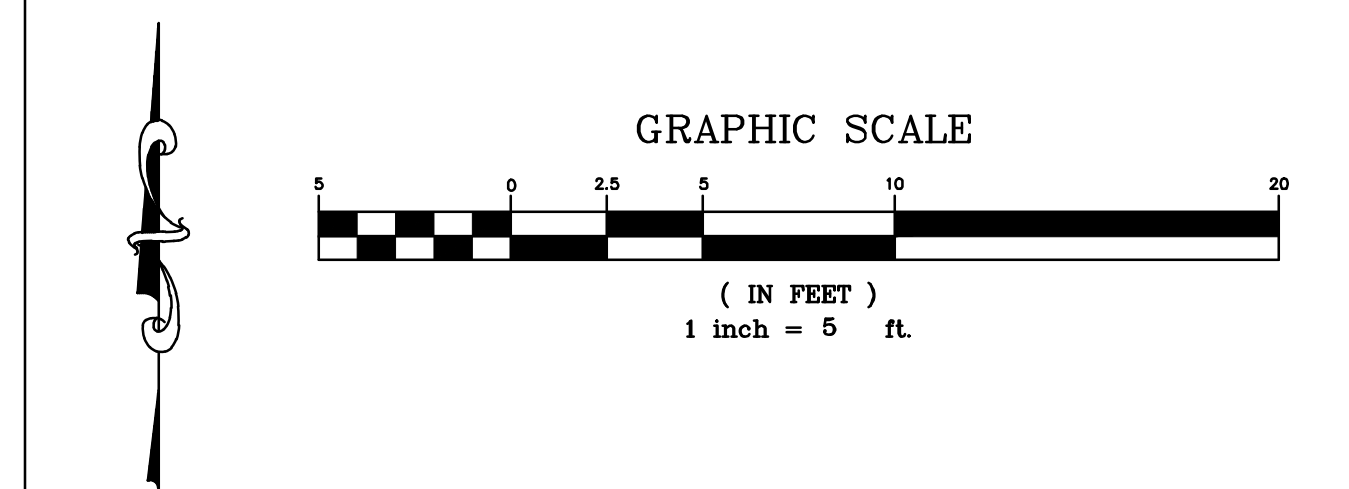
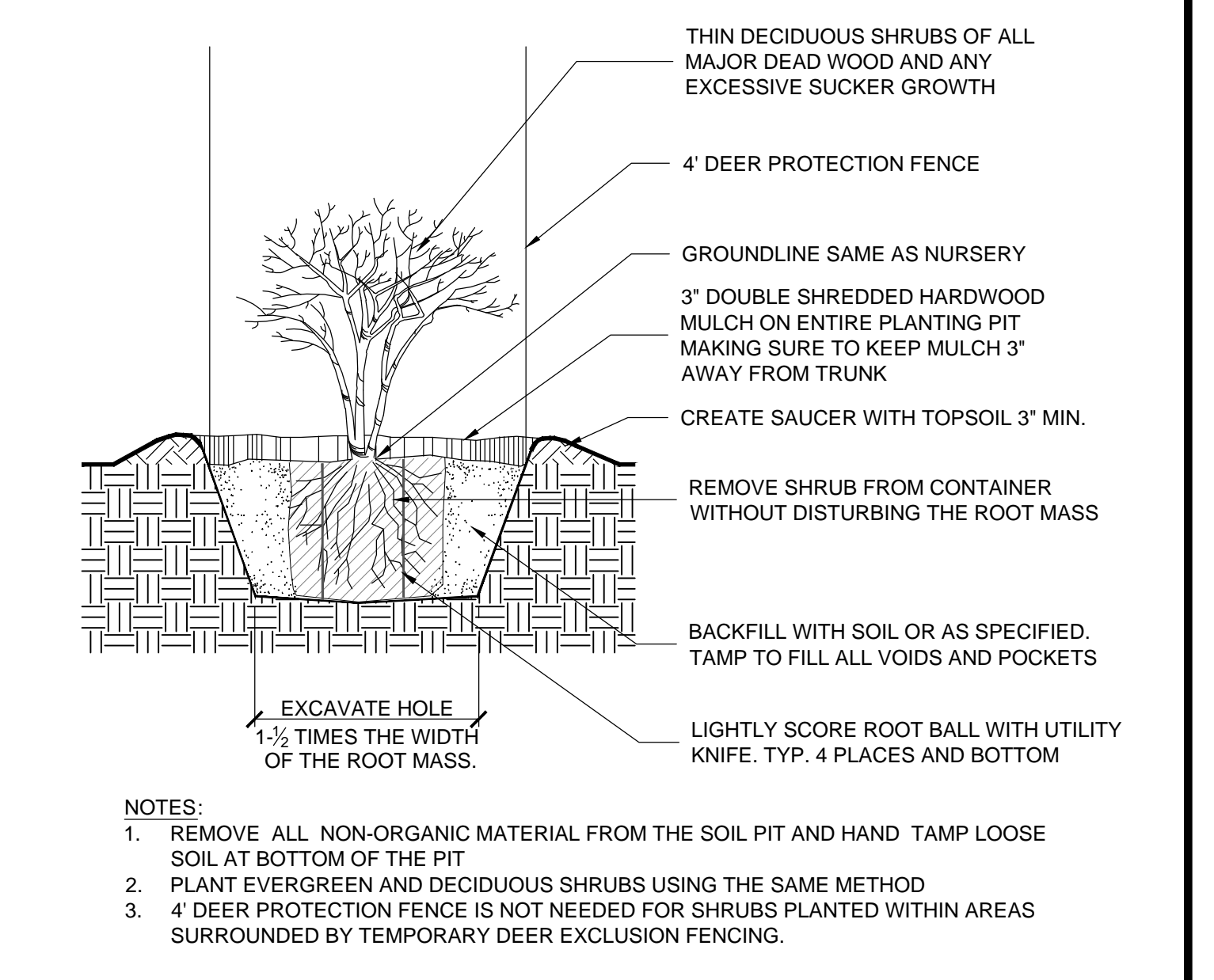
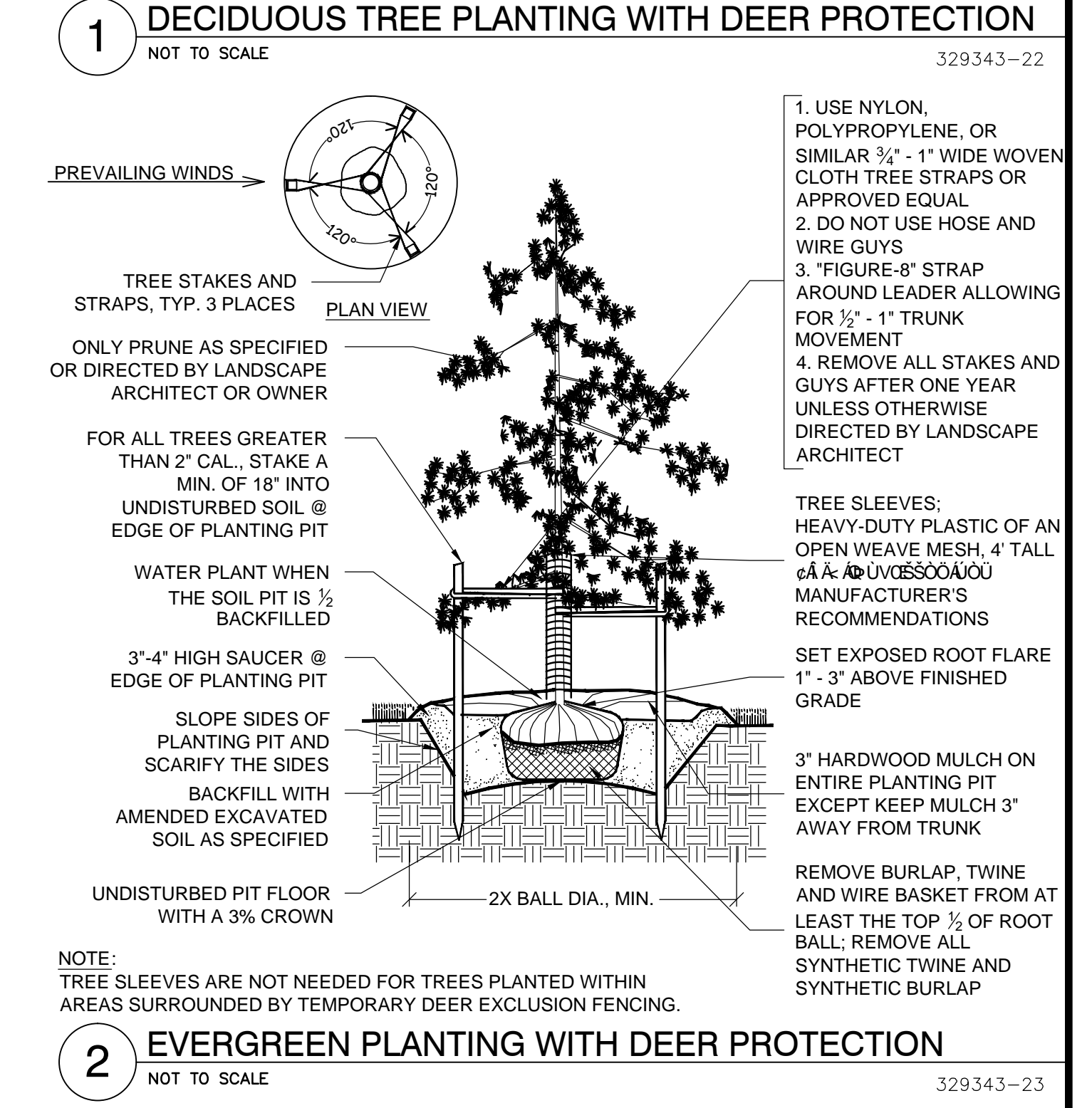
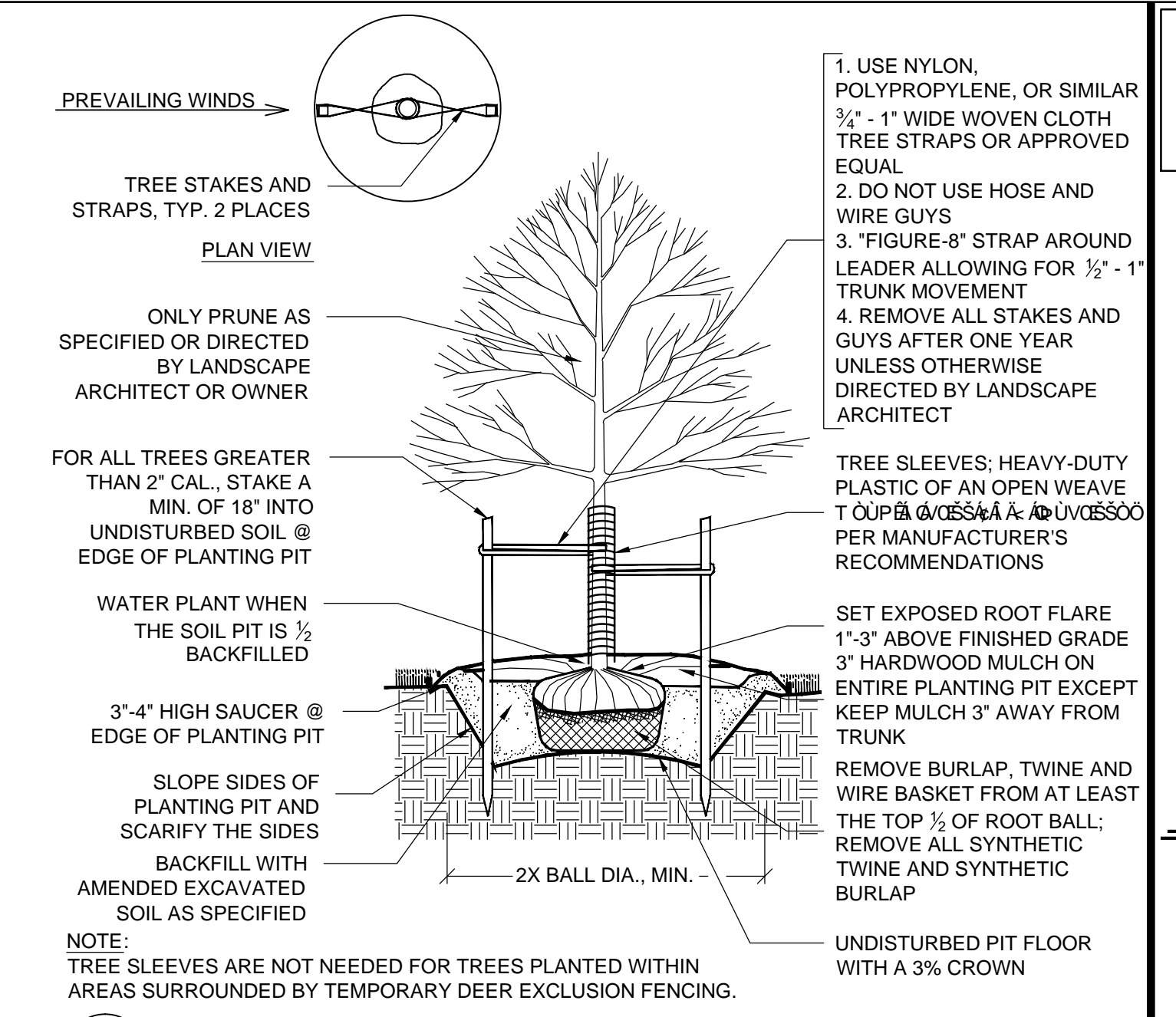
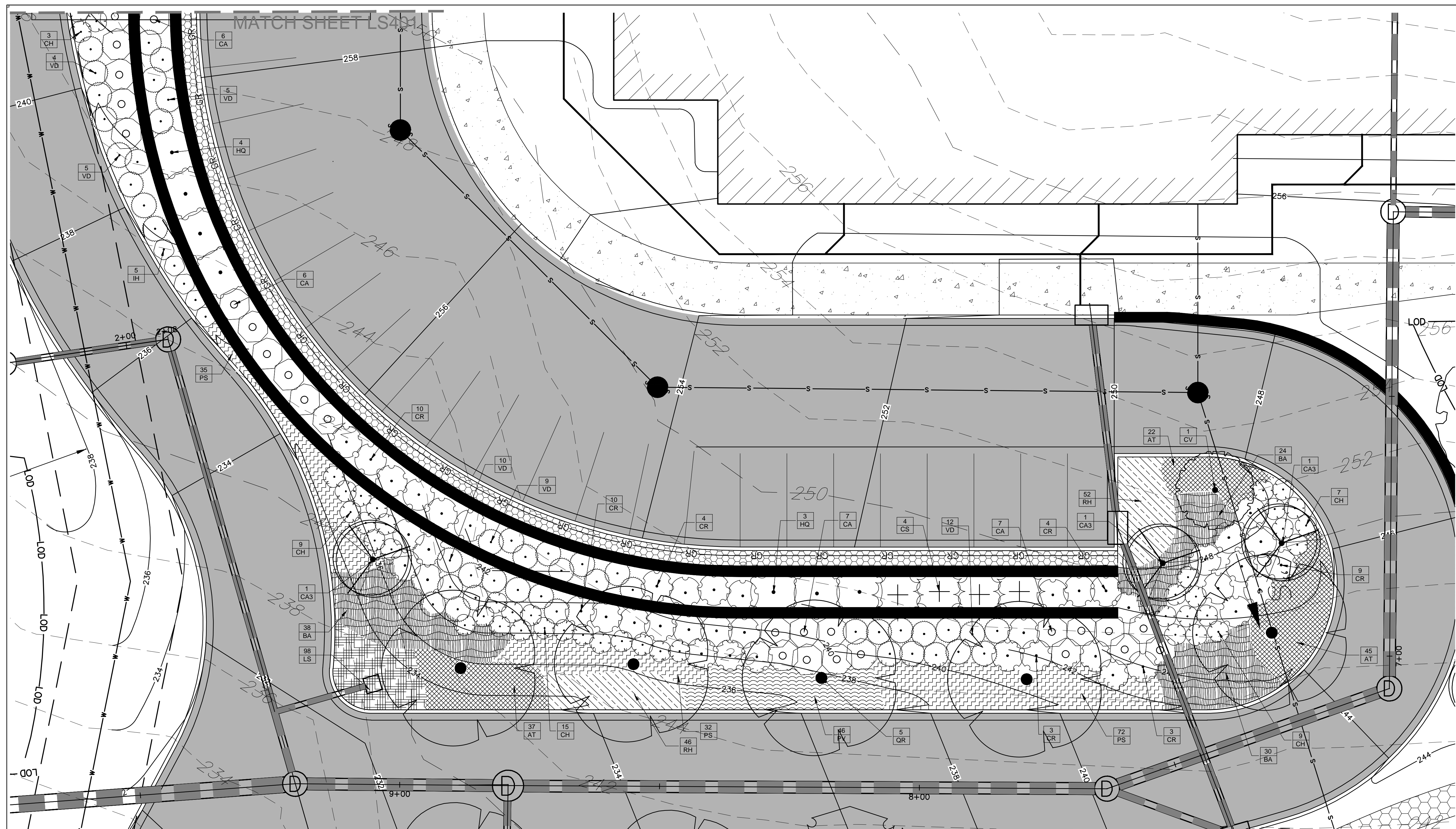
Landscape Plan

Issue Date: 1/26/2015

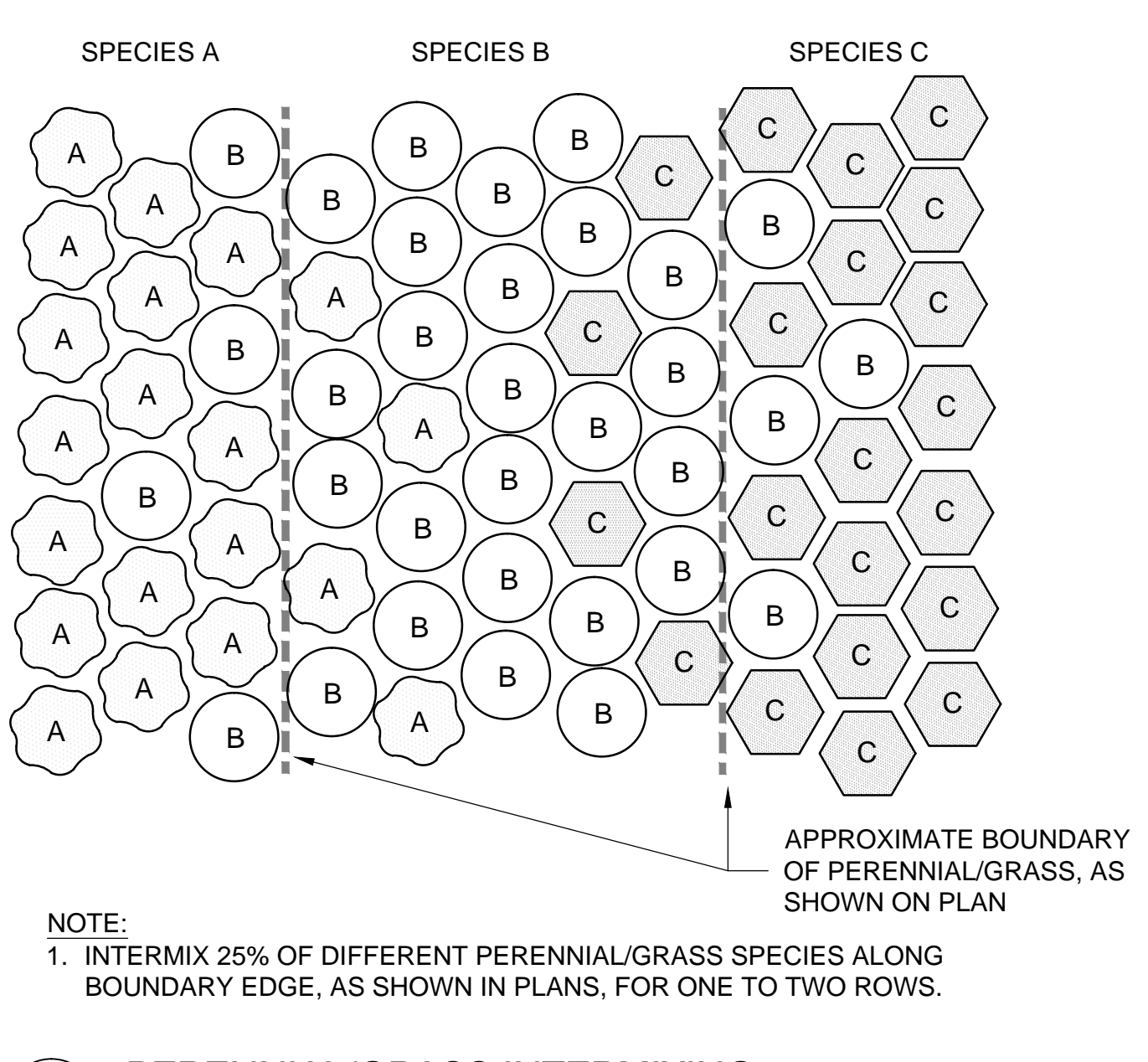
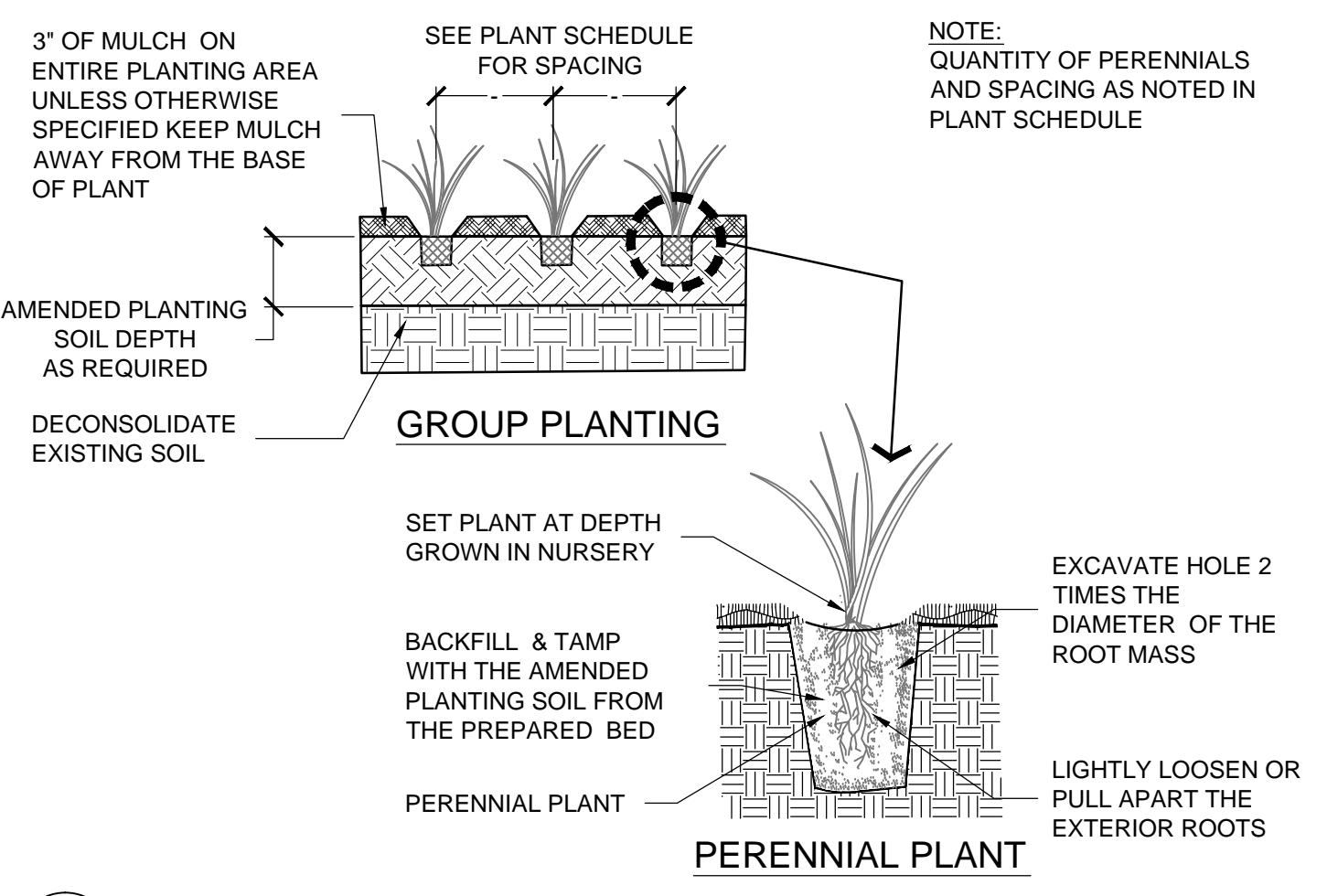
Sheet Number:

**LS401**

Project Number: 113-455-001  
 Drawn By: JAC  
 Checked By: WJP



PLANT CENTER	SPACING 'D'	ROW 'A'	PLANTS PER 10 SQ. FT.
TRIANGULAR	8" O.C.	6.93"	26
PLANT SPACING	12" O.C.	10.4"	11.5
ALL EQUAL OR AS SHOWN ON PLANTING PLAN	18" O.C.	15.6"	5.12
	20" O.C.	17.3"	2.42
	24" O.C.	20.8"	2.9
	36" O.C.	30.0"	1.28



4 HERBACEOUS & GRASS PLANTING DETAIL NOT TO SCALE 329301-05

5 PERENNIAL/GRASS INTERMIXING 1" = 1'-0" 329495-12