

ATTACHMENT 5

BETHESDA-CHEVY CHASE MIDDLE SCHOOL #2

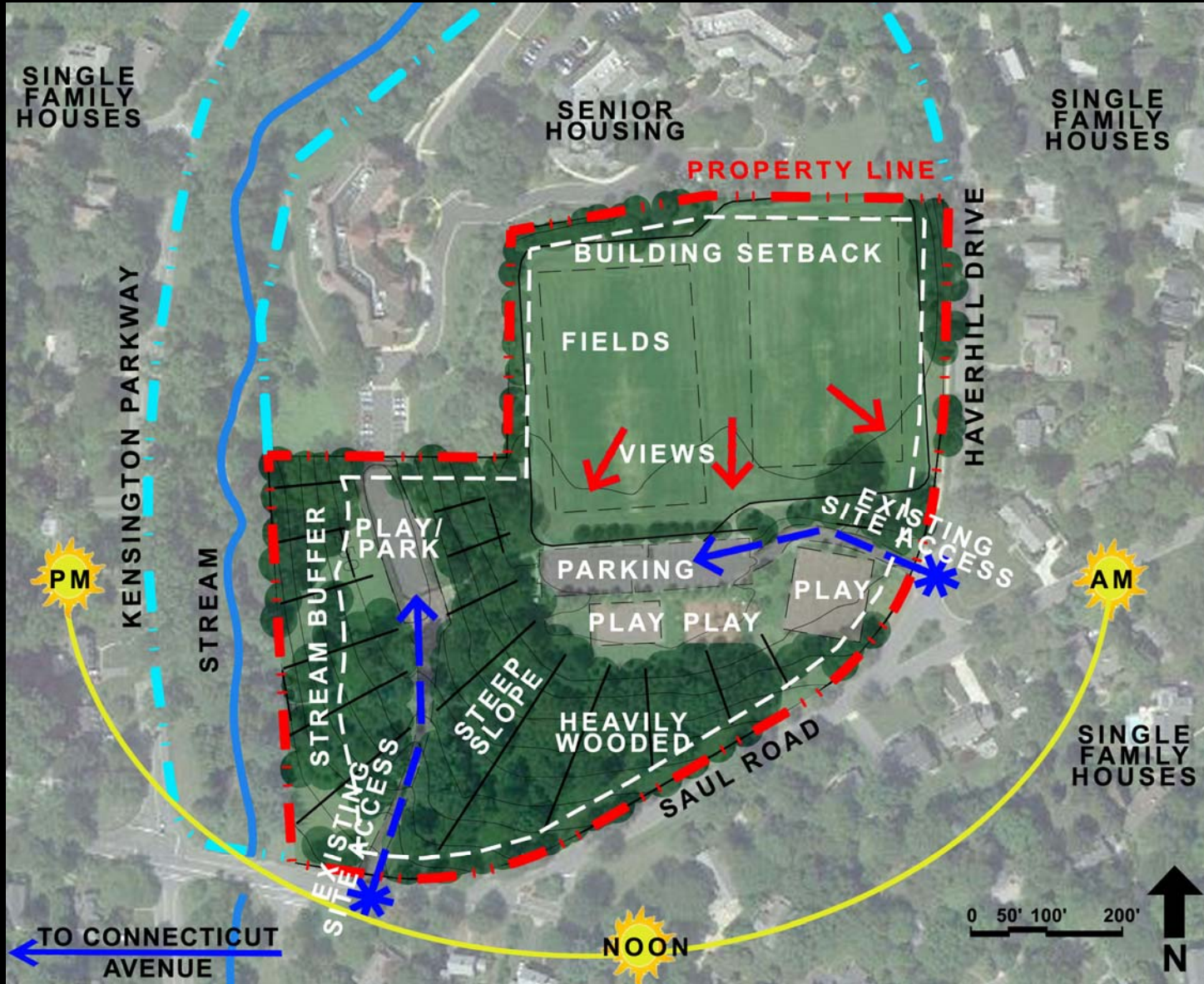
SCHEMATIC DESIGN
COMMUNITY PRESENTATION

NOVEMBER 12, 2013

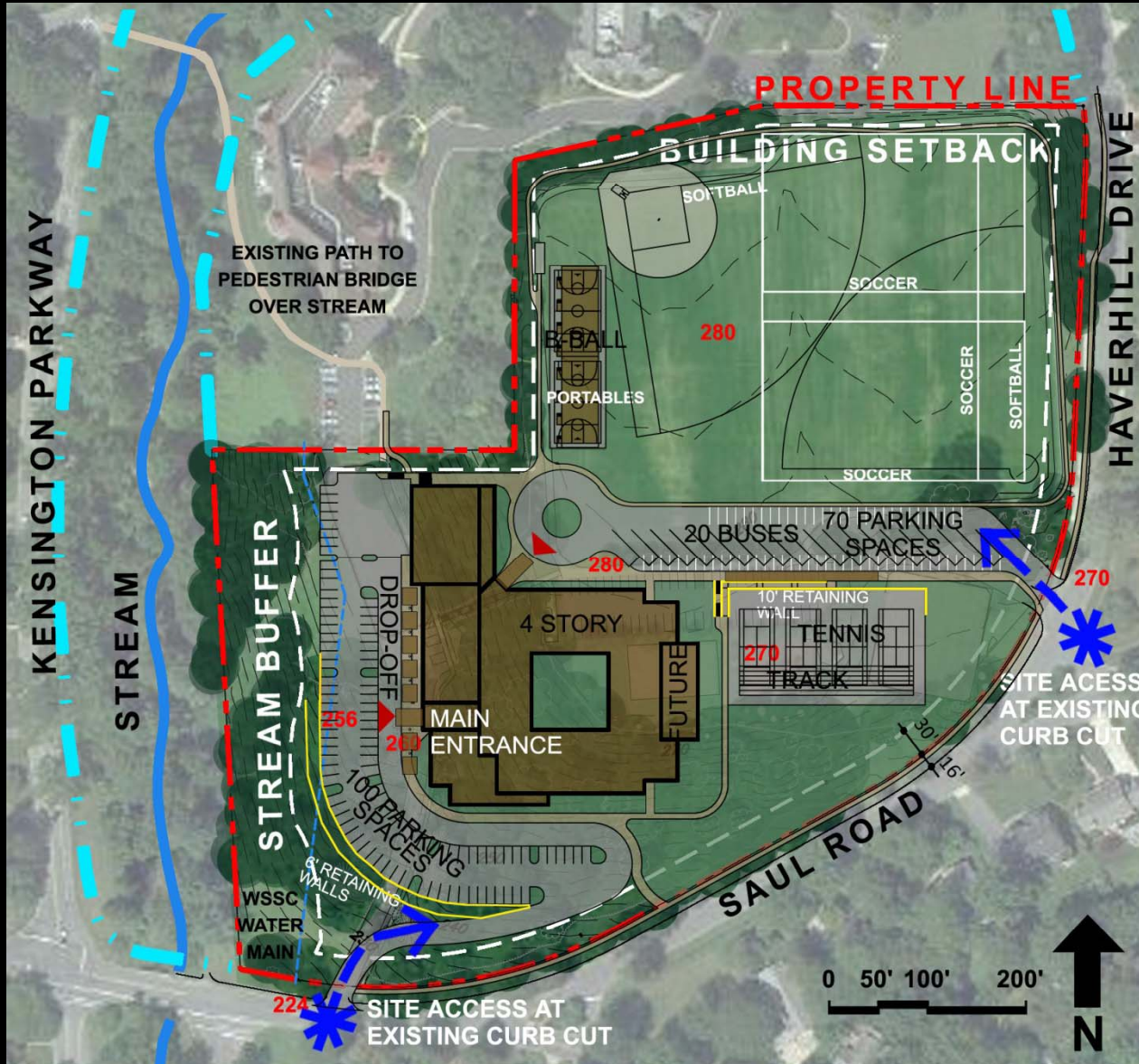
7:00 PM

NORTH CHEVY CHASE
ELEMENTARY SCHOOL

SITE ANALYSIS



SITE PLAN 2E



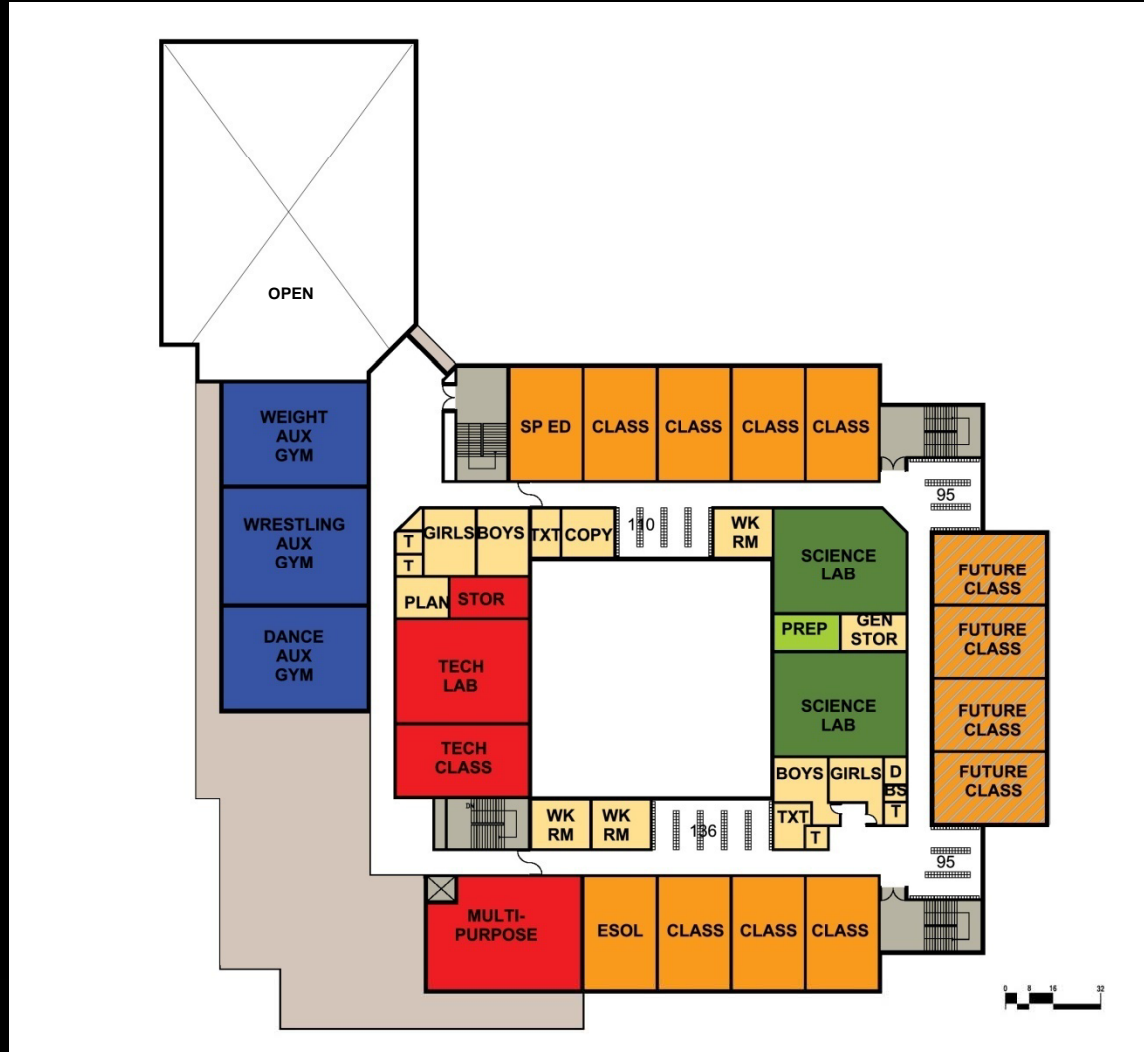
OPTION 2E – FIRST FLOOR



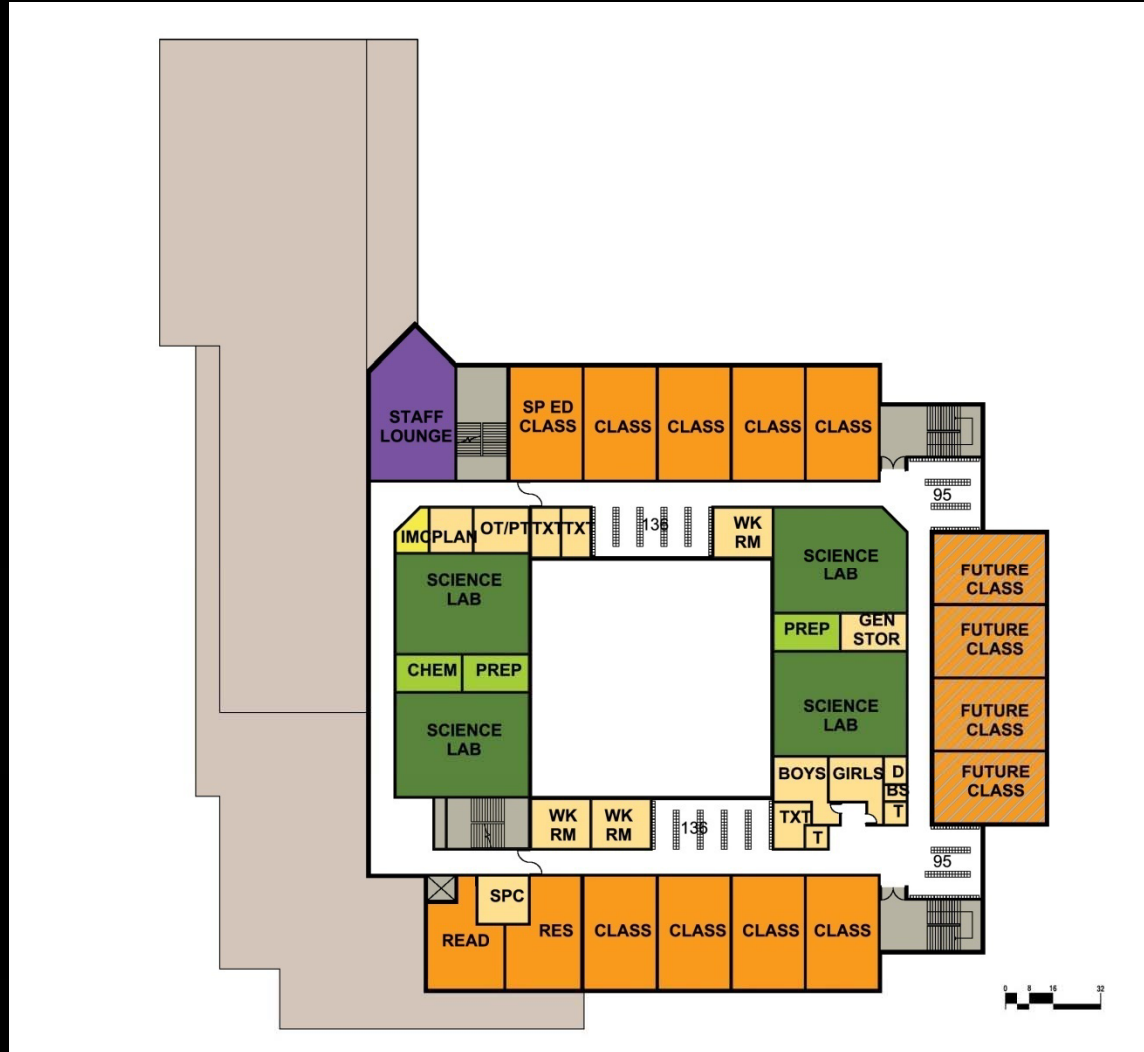
OPTION 2E – SECOND FLOOR



OPTION 2E – THIRD FLOOR



OPTION 2E – FOURTH FLOOR



OPTION 2E

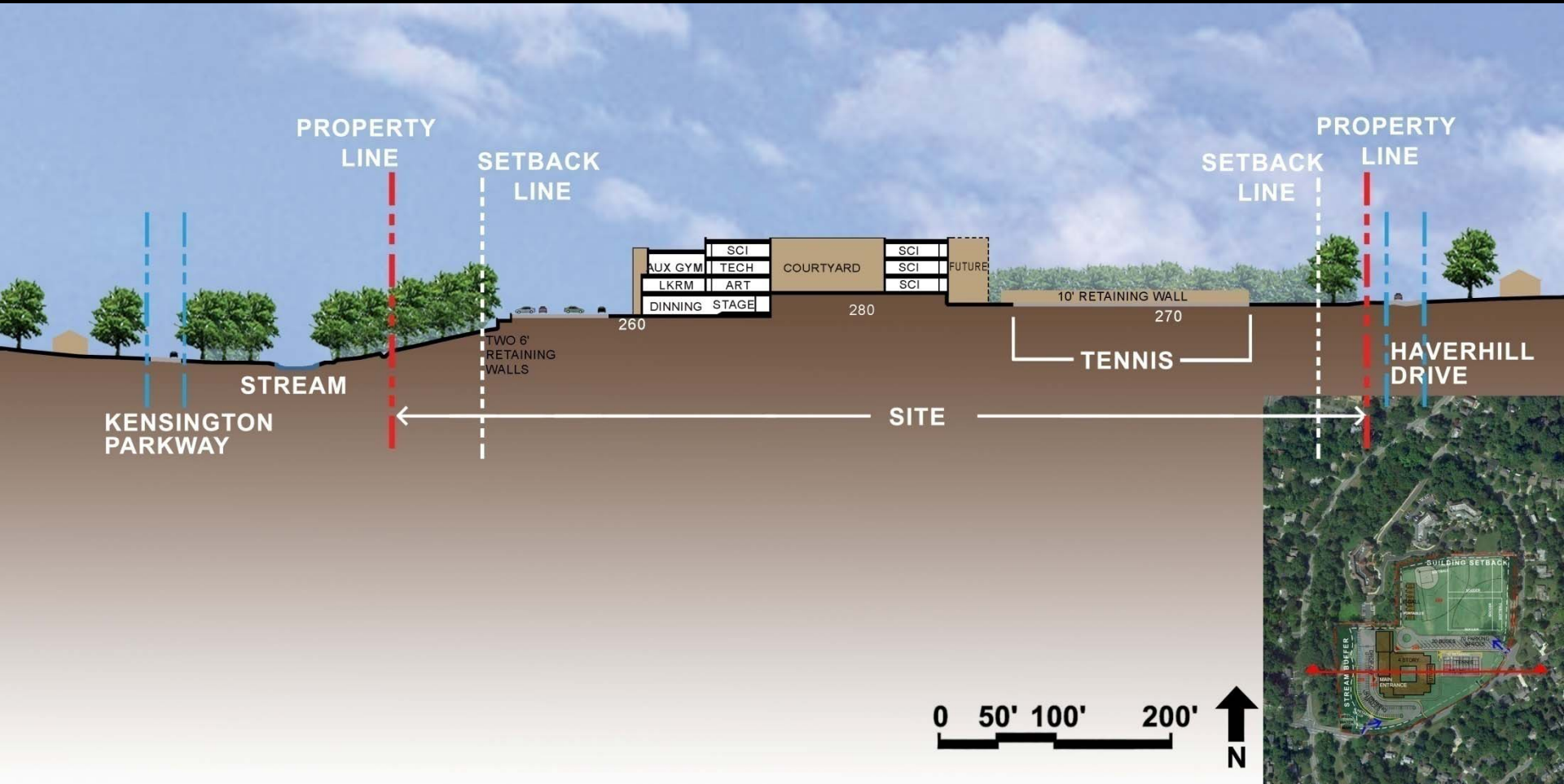
ADVANTAGES:

- + Grade levels are organized by floor, one grade per floor (Grade 6, Grade 7 and Grade 8).
- + Activity spaces are separated from academic spaces.
- + Parent cars are separated from buses on the school site.
- + The car and bus site access both utilize the existing curb cuts off Saul Road.
- + Four-story building preserves more green space.
- + Courtyard enhances circulation within school building.
- + Courtyard provides natural light to all spaces including core spaces.
- + Monumental stair at the main entrance.
- + Open corner entrance on the second level brings students into the central node of the school between the academic and activity spaces.
- + Gym at the north of the school moves it further away from the classroom spaces, and allows for better location of auxiliary gyms on third floor.
- + Health suite is on the same level as guidance and administration.
- + Restrooms grouped together in the academic area allows for better supervision.
- + Locker pod locations allow natural light into the corridors and act as a way finding device for students.

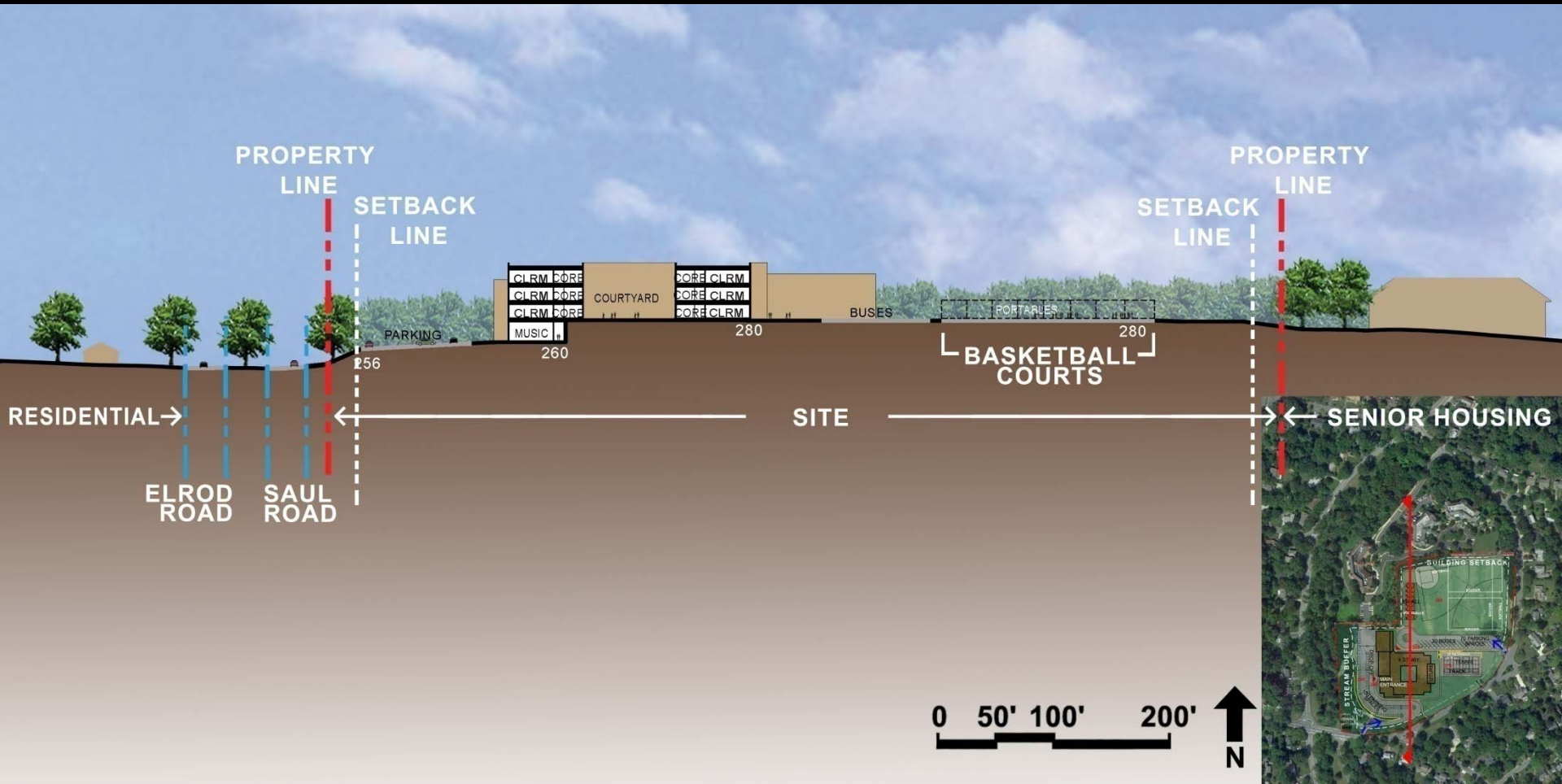
DISADVANTAGES:

- Staff/visitors parking less than maximum requirement (-25 spaces)
- Administration suite is on the lowest level, not as centralized as desired.
- Building parking lot on top of existing WSSC water main.
- Retaining walls at the staff parking lot face the street.
- Music suite below classrooms requires extra sound isolation.
- Fourth story requires more expensive construction – protected structure.

SITE SECTION



SITE SECTION



3D VIEW



3D VIEW



3D VIEW



QUESTIONS?

Schematic Design Work Session Schedule

Work Session #1 Wednesday, September 11 3:00 pm – 4:30pm
-at Westland Middle School

Work Session #2 Wednesday, September 25 7:00 pm – 8:30pm

Work Session #3 Wednesday, October 16 3:45 pm – 5:15pm

Work Session #4 Wednesday, October 30 7:00 pm – 8:30pm

-at North Chevy Chase Elementary School

Community Presentation Tuesday, November 12 7:00 pm – 8:30pm

-at North Chevy Chase Elementary School