

Plat Name: Villa Verde
Plat #: 220151090

Location: Located in the northeast quadrant of Georgia Avenue (Rt 97) and
Blueridge Avenue

Master Plan: Wheaton Sector Plan

Plat Details: CR zone; 1 Parcel

Applicants: Georgia Avenue Inc.

The subdivision plat has been reviewed by M-NCPPC staff and determined that the plat complies with Preliminary Plan No. 120140250 (MCPB Resolution No. 14-113) and with Site Plan No. 820140190 (Certified Site Plan dated March 11, 2015) as approved by the Board, and that any minor modifications reflected on the plat do not alter the intent of the Board's previous approval of the aforesaid plans.



AVA
 ARCHITECTURAL
 COMMUNITIES, INC.
 671 NORTH GALE ROAD
 ARLINGTON, VA 22202
 (703) 541-9000
 FAX: (703) 541-9002

DESIGN CONSULTANTS
 ARCHITECT
 FORD, COPLAN, MACHT
 ARCHITECTS
 1117 S. HUNTERS LANE, SUITE 200
 ARLINGTON, VA 22204
 (703) 541-2323
 FAX: (703) 541-2327

LANDSCAPE ARCHITECT
 STUDIO 39
 1815 W. COMMONS DRIVE, SUITE 200
 ARLINGTON, VA 22201
 (703) 261-7000
 FAX: (703) 261-7000

ENGINEERS
 BRUCE ELLIOTT & BREWER, CDT.
 1100 COMMONS DRIVE, SUITE 100
 ARLINGTON, VA 22201
 (703) 261-7000
 FAX: (703) 261-7000

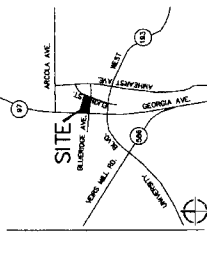
TRUCK ENGINEERS
 TRUCK ENGINEERS, INC.
 7235 COMMONS WAY, SUITE 8
 ARLINGTON, VA 22201
 (703) 261-7000
 FAX: (703) 261-7000

CONSULTANTS
 VIA HARTLAND, LLC
 3000 COMMONS DRIVE, SUITE 300
 ARLINGTON, VA 22201
 (703) 261-7000
 FAX: (703) 261-7000

PERMITS
 DATE
 CHECKED BY
 DATE

AVA
 WHEATON
 LOTS 3, 6 & 7
 PARCEL C VILLA VERDE
 15TH ELECTION DISTRICT
 MONTGOMERY COUNTY, MARYLAND
 3702 WINTERBROOK DRIVE, WOODS
 29150 WILSON ROAD, WOODS
 TOWN MAP, PLOT 2 & 3
 MNCPPC
 # 820140190
 CERTIFIED
 SITE PLAN

DRAWN BY
 DATE
 DATE SUBMITTED
 SHEET



DEVELOPMENT DATA TABLE

| ITEM | REVISION/DESCRIPTION | DATE |
|---------------|----------------------|----------|
| 1. SITE PLAN | ISSUE FOR PERMIT | 08/14/15 |
| 2. SITE PLAN | REVISION | 08/14/15 |
| 3. SITE PLAN | REVISION | 08/14/15 |
| 4. SITE PLAN | REVISION | 08/14/15 |
| 5. SITE PLAN | REVISION | 08/14/15 |
| 6. SITE PLAN | REVISION | 08/14/15 |
| 7. SITE PLAN | REVISION | 08/14/15 |
| 8. SITE PLAN | REVISION | 08/14/15 |
| 9. SITE PLAN | REVISION | 08/14/15 |
| 10. SITE PLAN | REVISION | 08/14/15 |

PROPOSED AND EXISTING UTILITIES

| ITEM | REVISION/DESCRIPTION | DATE |
|---------------|----------------------|----------|
| 1. UTILITIES | ISSUE FOR PERMIT | 08/14/15 |
| 2. UTILITIES | REVISION | 08/14/15 |
| 3. UTILITIES | REVISION | 08/14/15 |
| 4. UTILITIES | REVISION | 08/14/15 |
| 5. UTILITIES | REVISION | 08/14/15 |
| 6. UTILITIES | REVISION | 08/14/15 |
| 7. UTILITIES | REVISION | 08/14/15 |
| 8. UTILITIES | REVISION | 08/14/15 |
| 9. UTILITIES | REVISION | 08/14/15 |
| 10. UTILITIES | REVISION | 08/14/15 |

PROPOSED AND EXISTING UTILITIES

| ITEM | REVISION/DESCRIPTION | DATE |
|---------------|----------------------|----------|
| 1. UTILITIES | ISSUE FOR PERMIT | 08/14/15 |
| 2. UTILITIES | REVISION | 08/14/15 |
| 3. UTILITIES | REVISION | 08/14/15 |
| 4. UTILITIES | REVISION | 08/14/15 |
| 5. UTILITIES | REVISION | 08/14/15 |
| 6. UTILITIES | REVISION | 08/14/15 |
| 7. UTILITIES | REVISION | 08/14/15 |
| 8. UTILITIES | REVISION | 08/14/15 |
| 9. UTILITIES | REVISION | 08/14/15 |
| 10. UTILITIES | REVISION | 08/14/15 |

NOTE: 1. REFER TO LANDSCAPE ARCHITECTURE PLANS AND PLANS BY STUDIO 39 FOR SITE DRAINAGE AND LANDSCAPE DETAILS.
 2. ALL UTILITIES SHOULD BE LOCATED IN ACCORDANCE WITH THE MARYLAND PUBLIC UTILITIES CODE.
 3. ALL UTILITIES SHOULD BE LOCATED IN ACCORDANCE WITH THE MARYLAND PUBLIC UTILITIES CODE.
 4. ALL UTILITIES SHOULD BE LOCATED IN ACCORDANCE WITH THE MARYLAND PUBLIC UTILITIES CODE.
 5. ALL UTILITIES SHOULD BE LOCATED IN ACCORDANCE WITH THE MARYLAND PUBLIC UTILITIES CODE.

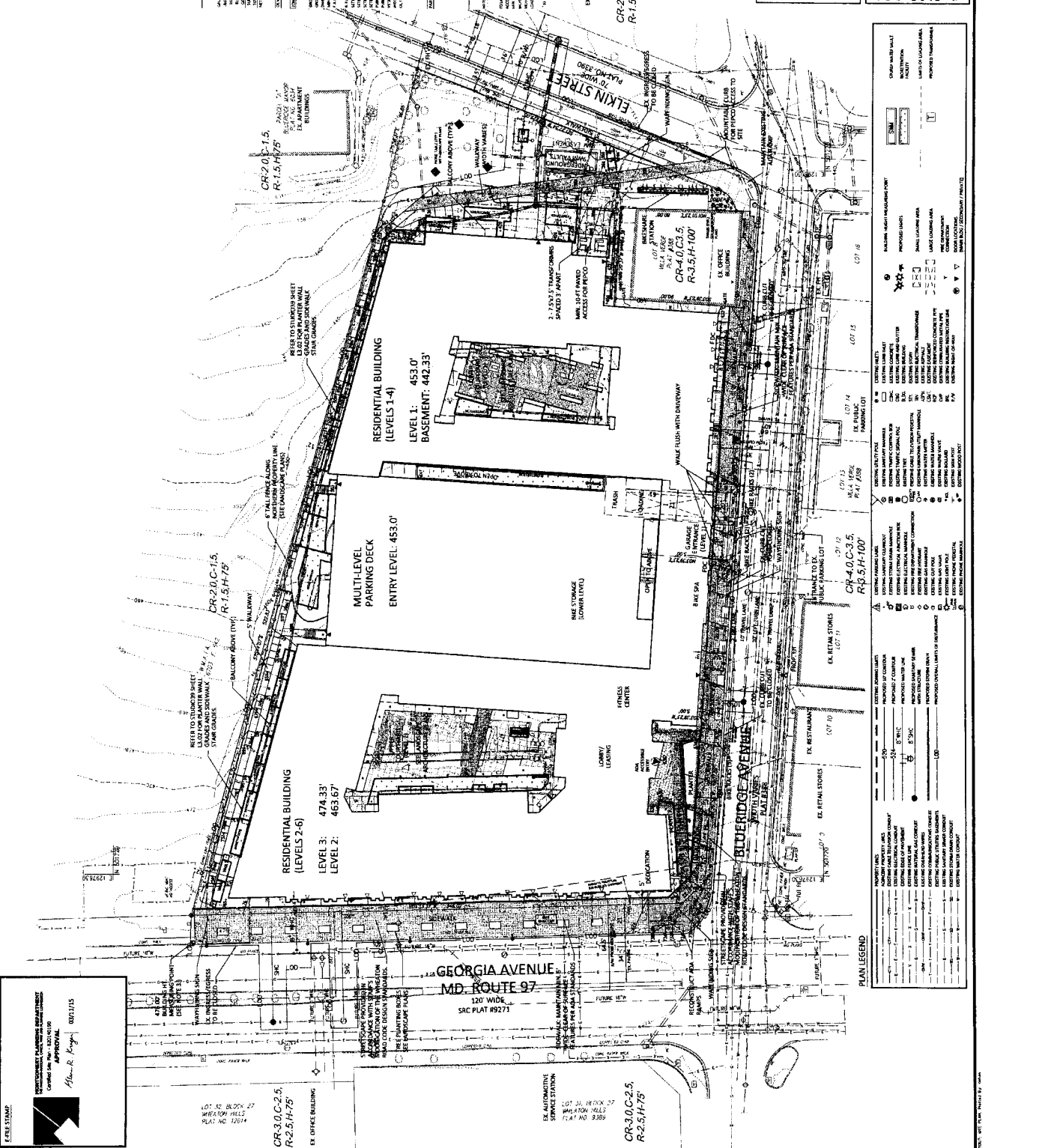


PROFESSIONAL CERTIFICATION

I hereby certify that these documents were prepared or approved by me, and that I am a duly licensed Professional Engineer in the State of Maryland.
 08/14/15
 08/14/15
 08/14/15
 08/14/15

DEVELOPER'S CERTIFICATE

The undersigned hereby certifies that the above documents were prepared or approved by me, and that I am a duly licensed Professional Engineer in the State of Maryland.
 08/14/15
 08/14/15
 08/14/15
 08/14/15



PLAN LEGEND

| | |
|--|-------------------|
| | EXISTING UTILITY |
| | PROPOSED UTILITY |
| | EXISTING EASEMENT |
| | PROPOSED EASEMENT |
| | EXISTING SETBACK |
| | PROPOSED SETBACK |
| | EXISTING WALL |
| | PROPOSED WALL |
| | EXISTING WINDOW |
| | PROPOSED WINDOW |
| | EXISTING DOOR |
| | PROPOSED DOOR |
| | EXISTING STAIR |
| | PROPOSED STAIR |
| | EXISTING CEILING |
| | PROPOSED CEILING |
| | EXISTING FLOOR |
| | PROPOSED FLOOR |
| | EXISTING ROOF |
| | PROPOSED ROOF |

DEVELOPMENT PLANNING DEPARTMENT
 CITY OF ARLINGTON
 APPROVAL
 08/14/15
 [Signature]