

Plat Name: West Side at Shady Grove Metro
Plat #: 220151030

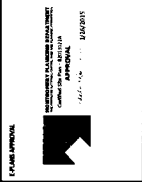
Location: Located on the west side of Crabbs Branch Way, 1500 feet north of the intersection with Redland Road.

Master Plan: Shady Grove Sector Plan

Plat Details: TOMX-2.0/TDR zone; 1 lot

Applicants: EYA/CSP Associates, LLC

The subdivision plat has been reviewed by M-NCPPC staff and determined that the plat complies with Preliminary Plan No. 12012008B (MCPB Resolution No. 14-96) and with Site Plan No. 82013022A (Certified Site Plan dated January 26, 2015) as approved by the Board, and that any minor modifications reflected on the plat do not alter the intent of the Board's previous approval of the aforesaid plans.



GENERAL NOTES

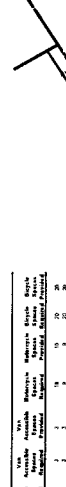
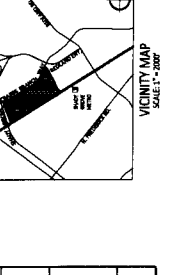
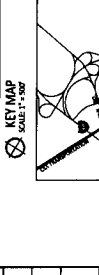
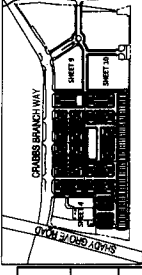
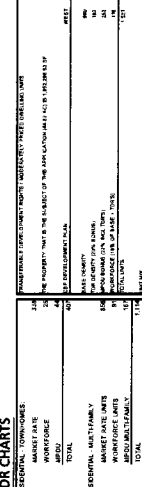
- List of 20 general notes providing project details, site boundaries, and regulatory requirements.

DATA TABLE: A summary table with 4 columns: Category, Description, Value, and Unit.

PARKING TABULATIONS: A detailed breakdown of parking spaces, including off-street and on-street parking, categorized by use.

TDR CHARTS: A grid showing zoning designations, density, and other zoning parameters across different lots.

DEVELOPMENT PROGRAM: A table detailing the proposed development, including building types, floor plate areas, and unit counts.

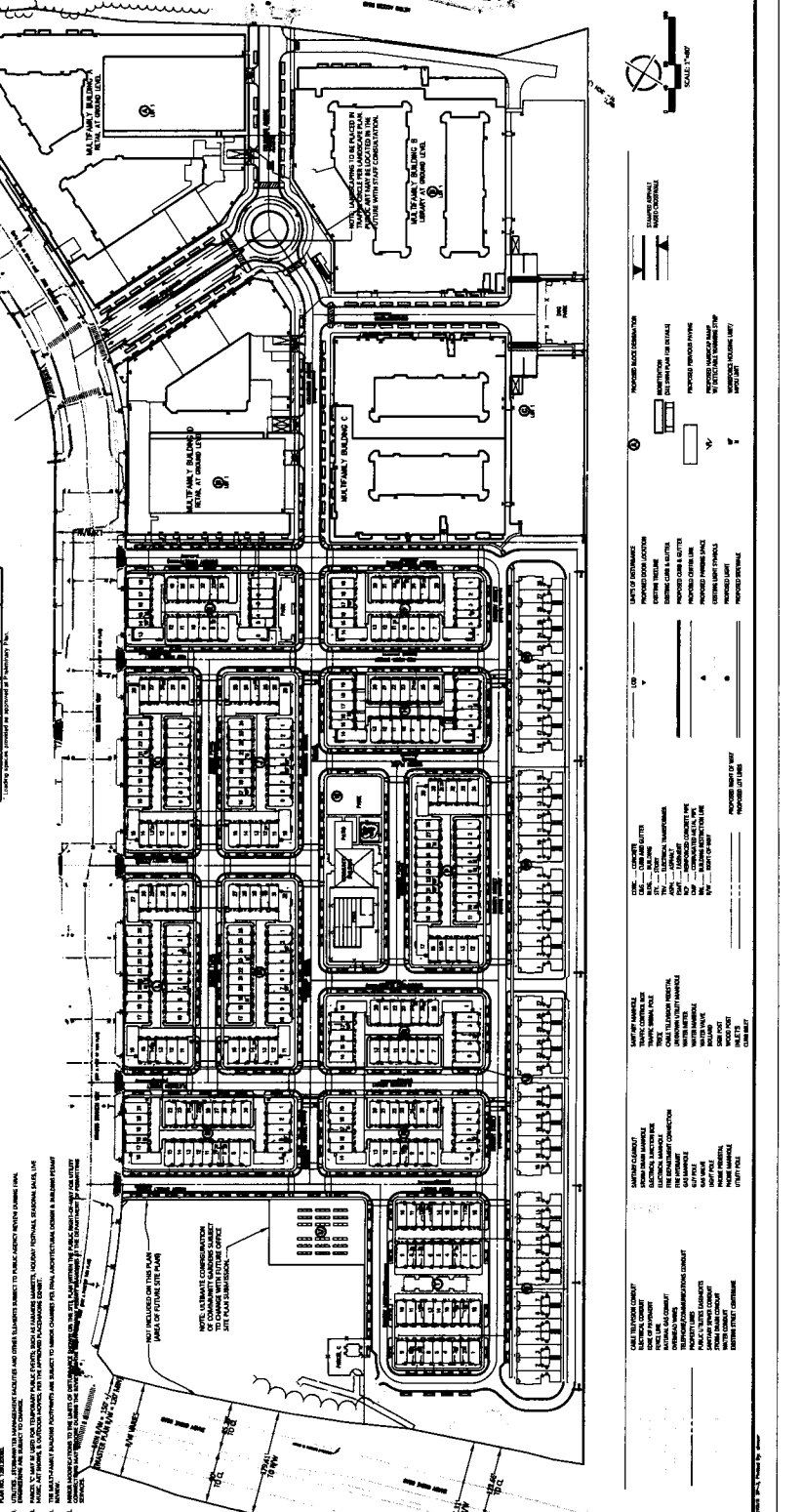


Development Phases: A table detailing the phasing of construction, including start and completion dates for various building sections.

Development Phases (continued): Further details on the construction phasing and program.

Development Phases (continued): Further details on the construction phasing and program.

Development Phases (continued): Further details on the construction phasing and program.



REVISIONS: A table listing any changes or corrections made to the plan during the review process.

STATION WEST SIDE: Information regarding the project's location and stationing.

CERTIFIED SITE PLAN #82013022A: Certification information for the submitted site plan.

STATION WEST SIDE: Additional location and stationing information.

CONTRACTOR: Information about the construction contractor for the project.

DATE: The date of the site plan certification.

PROJECT: Information about the specific project and its location.

PROJECT: Additional project details and contact information.