

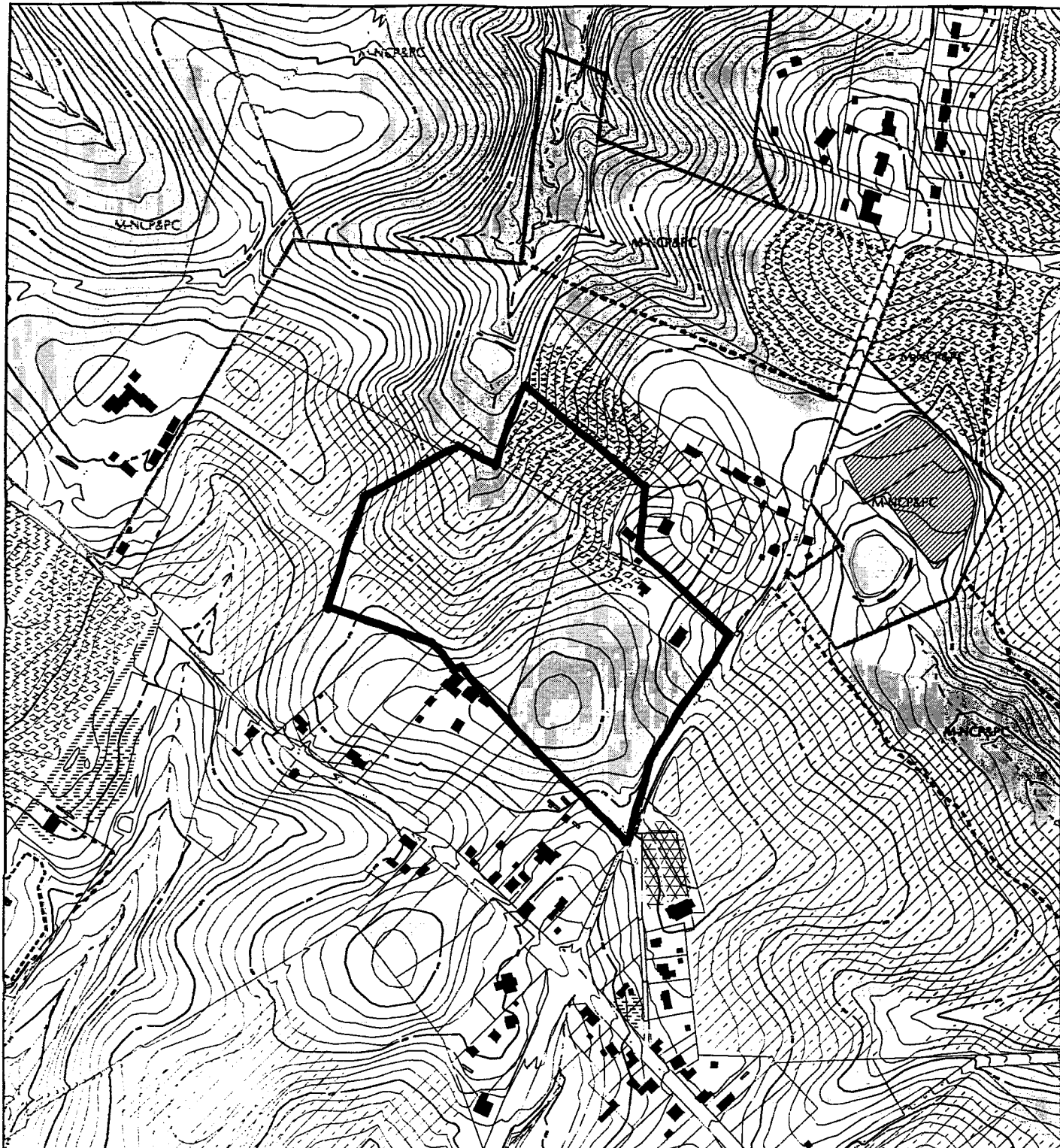
M E M O R A N D U M

DATE: September 7, 2001
TO: Montgomery County Planning Board
FROM: A. Malcolm Shaneman
Planning Department
(301)495-4587
SUBJECT: Informational Maps for Subdivision Items on the
Planning Board's Agenda for September 13, 2001.

Attached are copies of plan drawings for Items #10, #16, #17 and #19. These subdivision items are scheduled for Planning Board consideration on September 13, 2001. The items are further identified as follows:

- Agenda Item #10 - Preliminary Plan 1-01063
Estates At Woodcliffe Park
- ✓ Agenda Item #16 - Preliminary Plan 1-01078
Clarksburg Ridge
- Agenda Item #17 - Preliminary Plan 1-01047
Public Storage
- Agenda Item #18 - Preliminary Plan 1-00100
Richards Addition
- Agenda Item #19 - Preliminary Plan 1-01072
ezStorage Rockville

VICINITY MAP FOR CLARKSBURG RIDGE (9-01005) (1-01078)



Map compiled on July 06, 2001 at 2:51 PM | Site located on base sheet no - 233NW13

NOTICE

The planimetric, property, and topographic information shown on this map is based on copyrighted Map Products from the Montgomery County Department of Park and Planning of the Maryland-National Capital Park and Planning Commission, and may not be copied or reproduced without written permission from M-NCPPC.

Property lines are compiled by adjusting the property lines to topography created from aerial photography and should not be interpreted as actual field surveys. Planimetric features were compiled from 1:14400 scale aerial photography using stereo photogrammetric methods.

This map is created from a variety of data sources, and may not reflect the most current conditions in any one location and may not be completely accurate or up to date. All map features are approximately within five feet of their true location. This map may not be the same as a map of the same area plotted at an earlier time as the data is continuously updated. Use of this map, other than for general planning purposes is not recommended. - Copyright 1998

Key Map



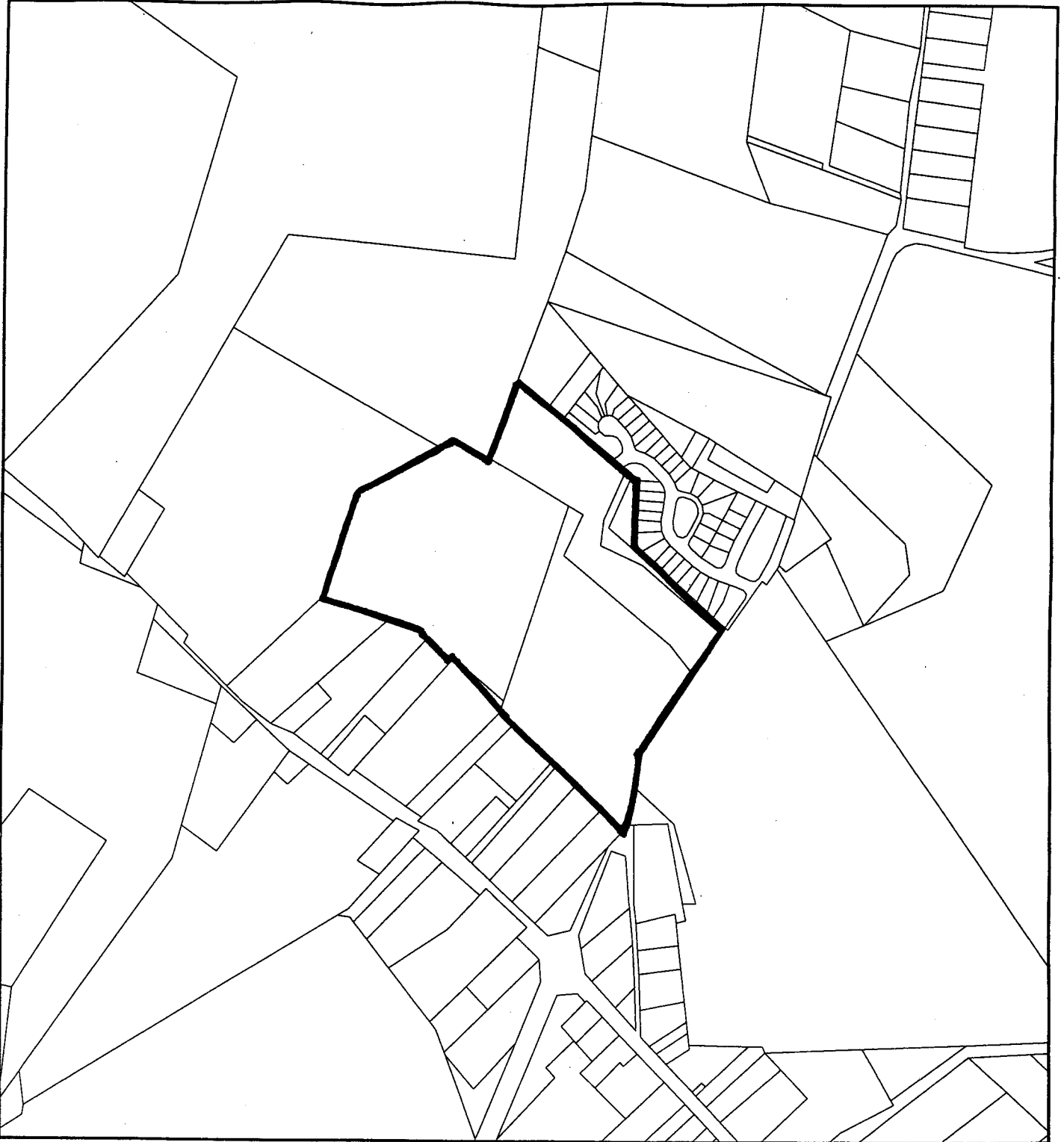
N



1 : 7200

VICINITY MAP FOR

CLARKSBURG RIDGE (9-01005) (1-01078)



Map compiled on July 09, 2001 at 10:19 AM | Site located on base sheet no - 233NW13

NOTICE

The planimetric, property, and topographic information shown on this map is based on copyrighted Map Products from the Montgomery County Department of Park and Planning of the Maryland-National Capital Park and Planning Commission, and may not be copied or reproduced without written permission from M-NCPPC.

Property lines are compiled by adjusting the property lines to topography created from aerial photography and should not be interpreted as actual field surveys. Planimetric features were compiled from 1:14400 scale aerial photography using stereo photogrammetric methods.

This map is created from a variety of data sources, and may not reflect the most current conditions in any one location and may not be completely accurate or up to date. All map features are approximately within five feet of their true location. This map may not be the same as a map of the same area plotted at an earlier time as the data is continuously updated. Use of this map, other than for general planning purposes is not recommended. - Copyright 1998



