

Item # 8

M-NCPPC



MONTGOMERY COUNTY DEPARTMENT OF PARK AND PLANNING

THE MARYLAND-NATIONAL CAPITAL
PARK AND PLANNING COMMISSION

8787 Georgia Avenue
Silver Spring, Maryland 20910-3760

M E M O R A N D U M

DATE: September 27, 2001

TO: Montgomery County Planning Board

FROM: A. Malcolm Shaneman
Planning Department
(301) 495-4587

SUBJECT: Informational Maps for Subdivision Items on the
Planning Board's Agenda for October 01, 2001.

Attached are copies of plan drawings for Items #05, #06, 07, 08, 09. These subdivision items are scheduled for Planning Board consideration on October 01, 2001. The items are further identified as follows:

Agenda Item #05 - Preliminary Plan 1-99100E
Cloverly Commercial

Agenda Item #06 - Preliminary Plan 1-01073
Meadow Ridge Seniors' Villas

Agenda Item #07 - Preliminary Plan 1-97023A
Manor Care-Norbeck

Agenda Item #08 - Preliminary Plan 1-01025
Faith Presbyterian Church

Agenda Item #09 - Preliminary Plan 1-01086
Mandell Property

Attachment

VICINITY MAP FOR

FAITH PRESBYTERIAN CHURCH (1-01025)



Map compiled on November 28, 2000 at 3:31 PM | Site located on base sheet no - 223NW03

NOTICE

The planimetric, property, and topographic information shown on this map is based on copyrighted Map Products from the Montgomery County Department of Park and Planning of the Maryland -National Capital Park and Planning Commission, and may not be copied or reproduced without written permission from M-NCPPC.

Property lines are compiled by adjusting the property lines to topography created from aerial photography and should not be interpreted as actual field surveys. Planimetric features were compiled from 1:14400 scale aerial photography using stereo photogrammetric methods.

This map is created from a variety of data sources, and may not reflect the most current conditions in any one location and may not be completely accurate or up to date. All map features are approximately within five feet of their true location. This map may not be the same as a map of the same area plotted at an earlier time as the data is continuously updated. Use of this map, other than for general planning purposes is not recommended. - Copyright 1998

Key Map



N



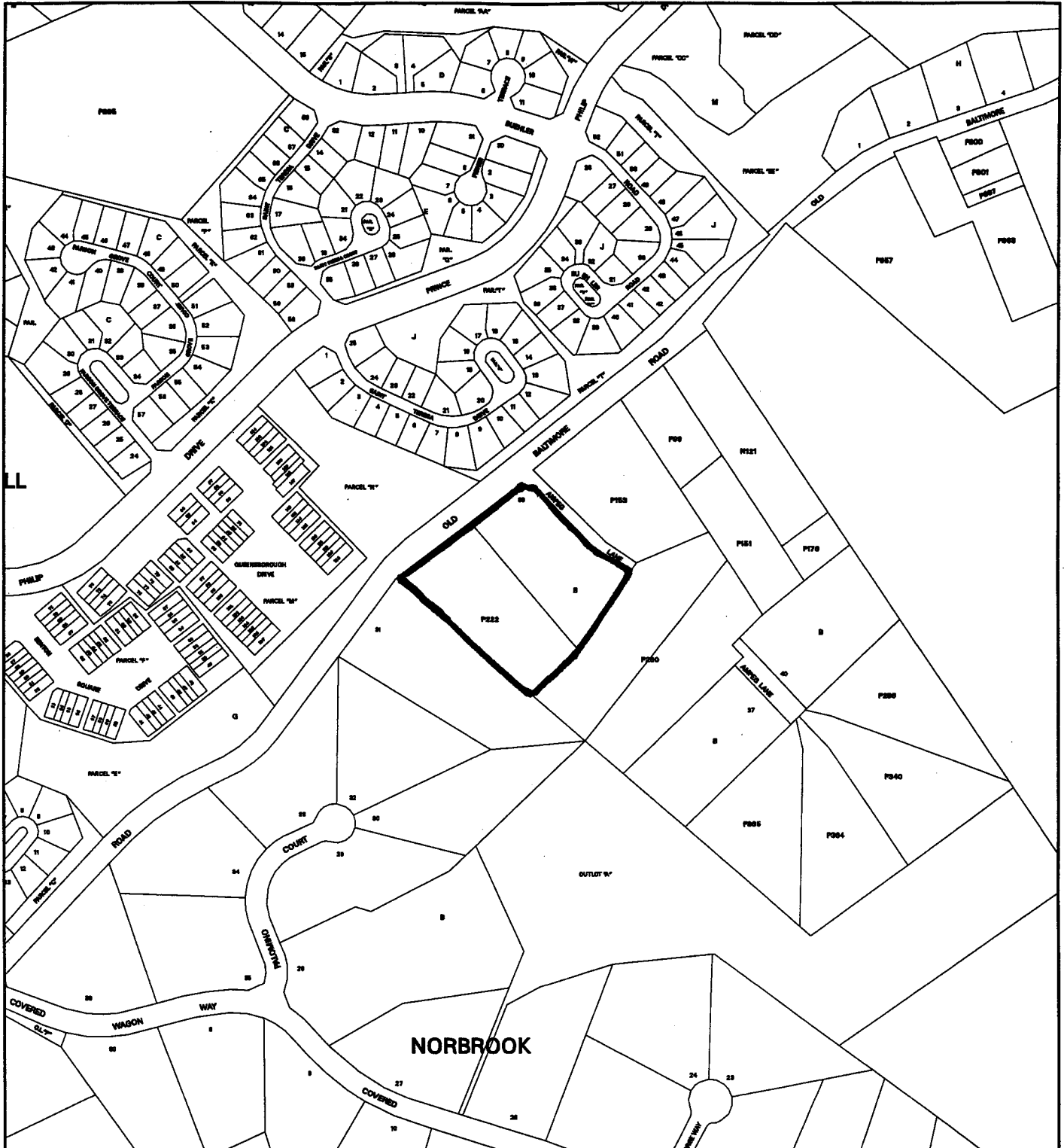
Research & Technology Center



1 : 4800

VICINITY MAP FOR

FAITH PRESBYTERIAN CHURCH (1-01025)



Map compiled on November 28, 2000 at 3:37 PM | Site located on base sheet no - 223NW03

NOTICE

The planimetric, property, and topographic information shown on this map is based on copyrighted Map Products from the Montgomery County Department of Park and Planning of the Maryland-National Capital Park and Planning Commission, and may not be copied or reproduced without written permission from M-NCPPC.

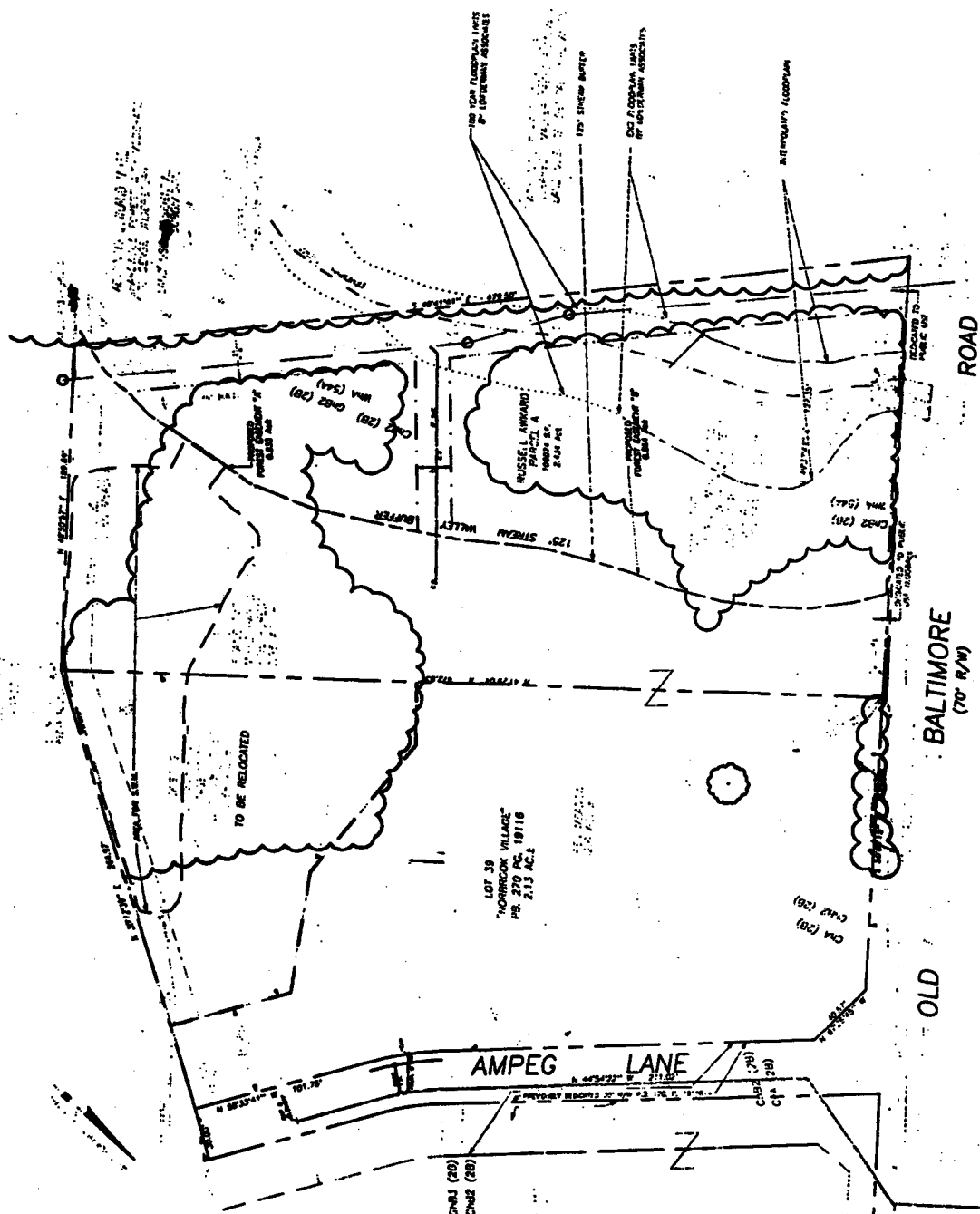
Property lines are compiled by adjusting the property lines to topography created from aerial photography and should not be interpreted as actual field surveys. Planimetric features were compiled from 1:14400 scale aerial photography using stereo photogrammetric methods.

This map is created from a variety of data sources, and may not reflect the most current conditions in any one location and may not be completely accurate or up to date. All map features are approximately within five feet of their true location. This map may not be the same as a map of the same area plotted at an earlier time as the data is continuously updated. Use of this map, other than for general planning purposes is not recommended. - Copyright 1998

Key Map



1:4800



FD-302a (Rev. 11-29-60)

[illegible]