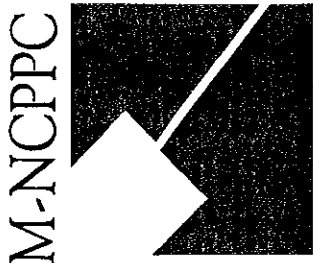


Item #15



MONTGOMERY COUNTY DEPARTMENT OF PARK & PLANNING

THE MARYLAND-NATIONAL CAPITAL
PARK AND PLANNING COMMISSION

8787 Georgia Avenue
Silver Spring, Maryland 20910-3760

M E M O R A N D U M

DATE: December 14, 2001
TO: Montgomery County Planning Board
FROM: A. Malcolm Shaneman
Development Review Division
(301) 495-4587
SUBJECT: Informational Maps for Subdivision Items on the
Planning Board's Agenda for December 20, 2001.

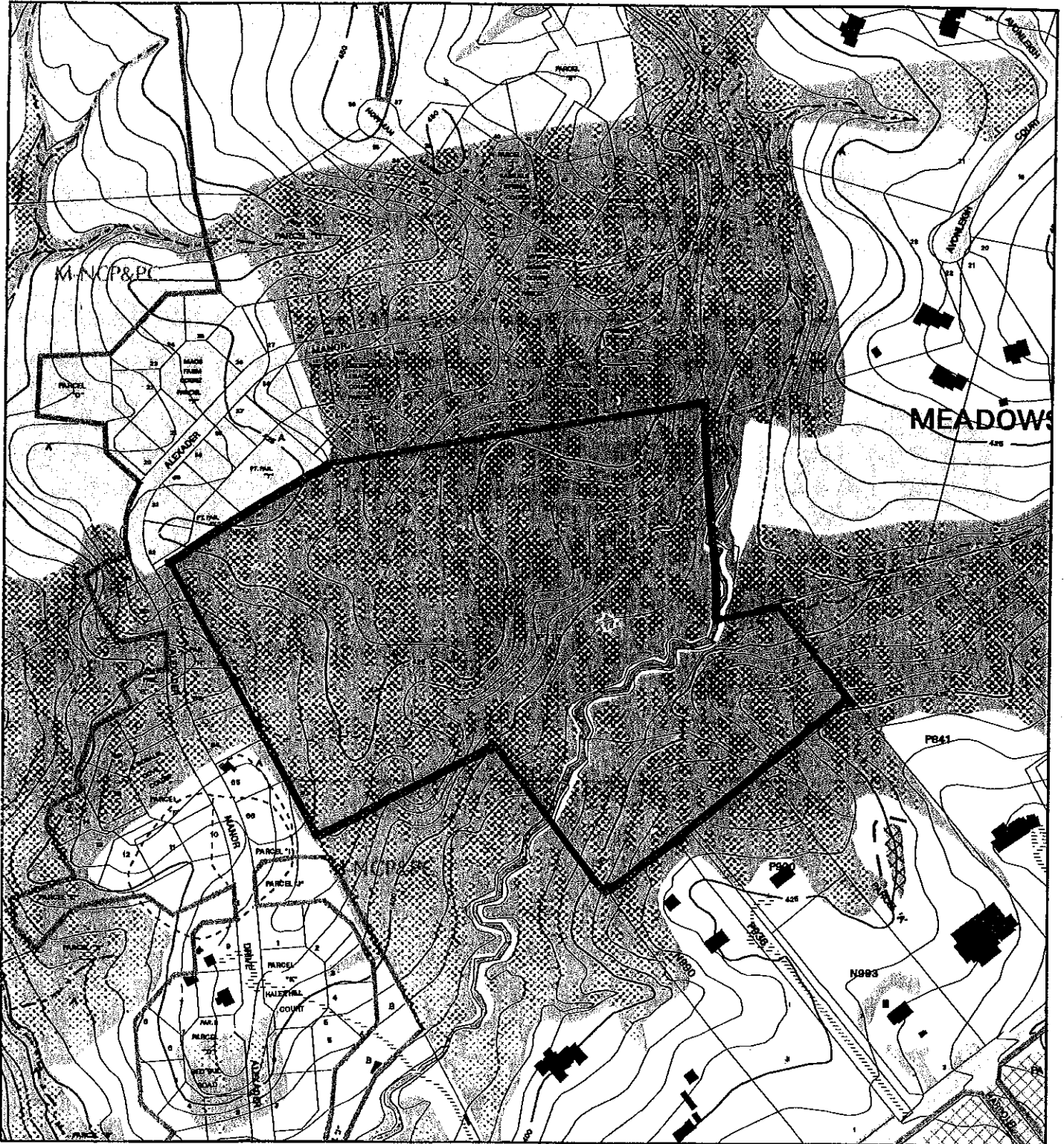
Attached are copies of plan drawings for Items #04, #07, #08, #09, #13, #15. These subdivision items are scheduled for Planning Board consideration on December 20, 2001. The items are further identified as follows:

- Agenda Item #04 - Preliminary Plan 1-01012A
Bethesda Triangle
- Agenda Item #07 - Pre-Preliminary Plan 7-01053
Nicholson Property
- Agenda Item #08 - Preliminary Plan 1-02034
Vitullo Property
- Agenda Item #09 - Subdivision Regulation Waver SRW-02002
Kum Tarry
- Agenda Item #13 - Preliminary Plan 1-02009
Anscroft Preserve
- Agenda Item #15 - Preliminary Plan 1-02024
The Reserve at Ashton

Attachment

VICINITY MAP FOR

THE RESERVE @ ASHTON (1-02024)



Map compiled on October 11, 2001 at 11:37 AM | Site located on base sheet no - 223NW01

NOTICE

The planimetric, property, and topographic information shown on this map is based on copyrighted Map Products from the Montgomery County Department of Park and Planning of the Maryland-National Capital Park and Planning Commission, and may not be copied or reproduced without written permission from M-NCPPC.

Property lines are compiled by adjusting the property lines to topography created from aerial photography and should not be interpreted as actual field surveys. Planimetric features were compiled from 1:14400 scale aerial photography using stereo photogrammetric methods.

This map is created from a variety of data sources, and may not reflect the most current conditions in any one location and may not be completely accurate or up to date. All map features are approximately within five feet of their true location. This map may not be the same as a map of the same area plotted at an earlier time as the data is continuously updated. Use of this map, other than for general planning purposes is not recommended. - Copyright 1998

Key Map



N



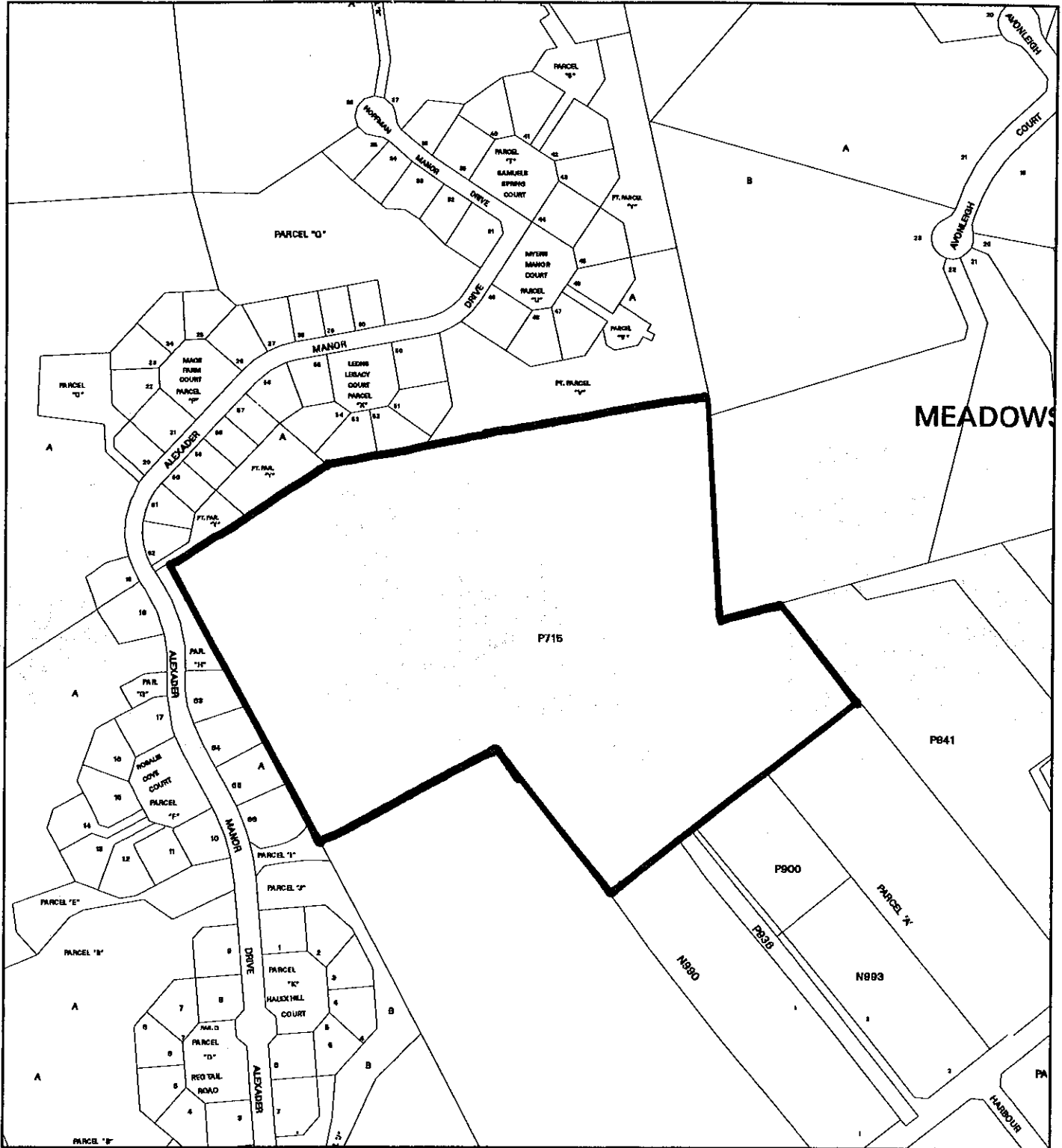
Research & Technology Center



1 : 4800

MONTGOMERY COUNTY DEPARTMENT OF PARK AND PLANNING
THE MARYLAND-NATIONAL CAPITAL PARK AND PLANNING COMMISSION
8787 Georgia Avenue - Silver Spring, Maryland 20910-3760

VICINITY MAP FOR
THE RESERVE @ ASHTON (8-02005)



Map compiled on October 11, 2001 at 11:16 AM | Site located on base sheet no - 223NV01

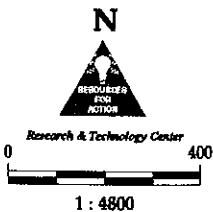
NOTICE

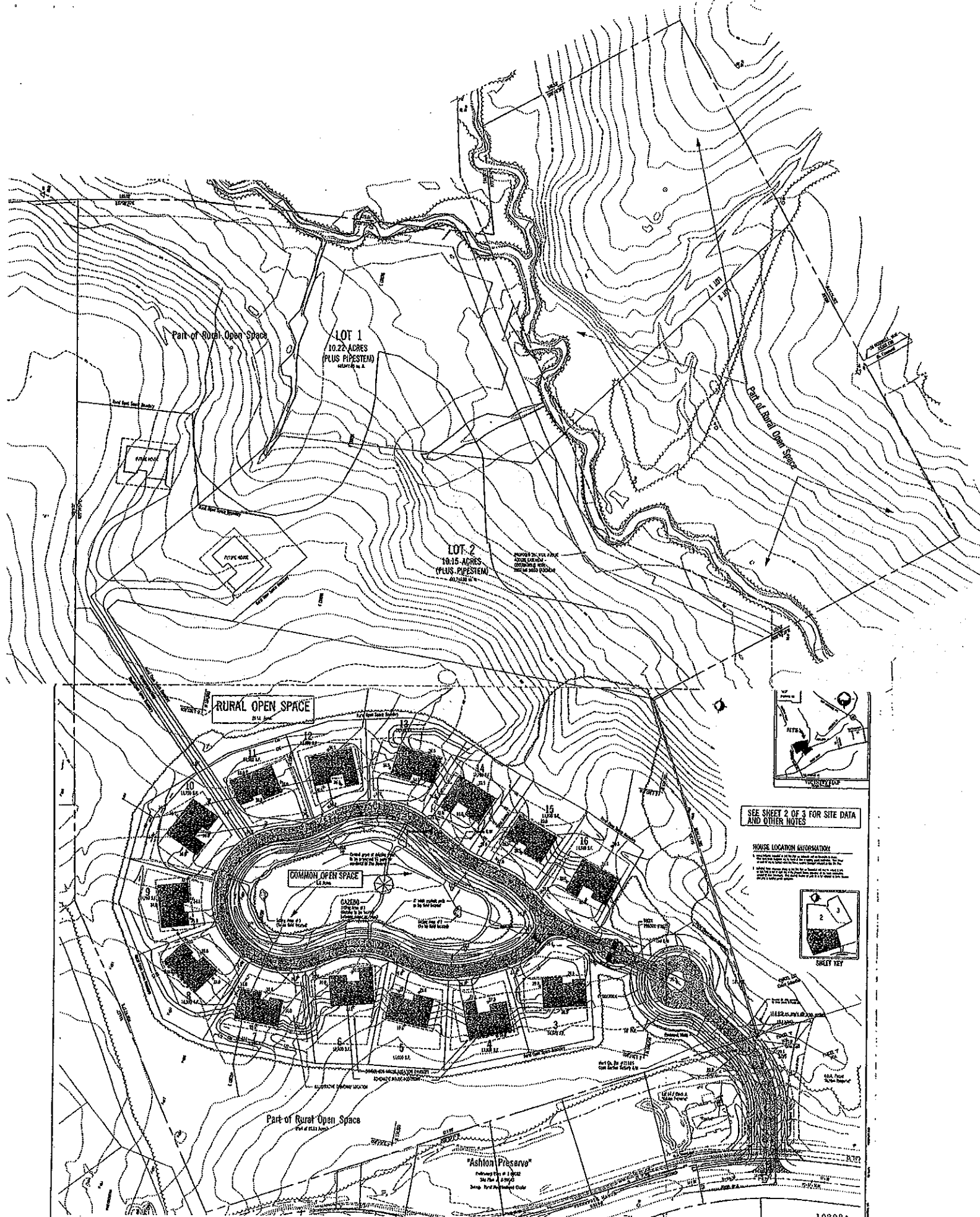
The planimetric, property, and topographic information shown on this map is based on copyrighted Map Products from the Montgomery County Department of Park and Planning of the Maryland-National Capital Park and Planning Commission, and may not be copied or reproduced without written permission from M-NCPPC.

Property lines are compiled by adjusting the property lines to topography created from aerial photography and should not be interpreted as actual field surveys. Planimetric features were compiled from 1:14400 scale aerial photography using stereo photogrammetric methods.

This map is created from a variety of data sources, and may not reflect the most current conditions in any one location and may not be completely accurate or up to date. All map features are approximately within five feet of their true location. This map may not be the same as a map of the same area plotted at an earlier time as the data is continuously updated. Use of this map, other than for general planning purposes is not recommended. - Copyright 1998

Key Map





SEE SHEET 2 OF 3 FOR SITE DATA
AND OTHER NOTES

HOUSE LOCATION INFORMATION

1. HOUSES ARE TO BE PLACED ON THE LOTS AS SHOWN ON THIS PLAN. THE HOUSES ARE TO BE PLACED ON THE LOTS AS SHOWN ON THIS PLAN. THE HOUSES ARE TO BE PLACED ON THE LOTS AS SHOWN ON THIS PLAN.

