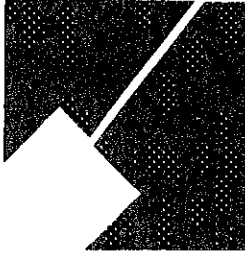


Item #7

M-NCPPC



MONTGOMERY COUNTY DEPARTMENT OF PARK & PLANNING

THE MARYLAND-NATIONAL CAPITAL  
PARK AND PLANNING COMMISSION

8787 Georgia Avenue  
Silver Spring, Maryland 20910-3760

M E M O R A N D U M

**DATE:** December 14, 2001  
**TO:** Montgomery County Planning Board  
**FROM:** A. Malcolm Shaneman  
Development Review Division  
(301) 495-4587  
**SUBJECT:** Informational Maps for Subdivision Items on the  
Planning Board's Agenda for December 20, 2001.

---

Attached are copies of plan drawings for Items #04, #07, #08, #09, #13, #15. These subdivision items are scheduled for Planning Board consideration on December 20, 2001. The items are further identified as follows:

Agenda Item #04 - Preliminary Plan 1-01012A  
Bethesda Triangle

Agenda Item #07 - Pre-Preliminary Plan 7-01053  
Nicholson Property

Agenda Item #08 - Preliminary Plan 1-02034  
Vitullo Property

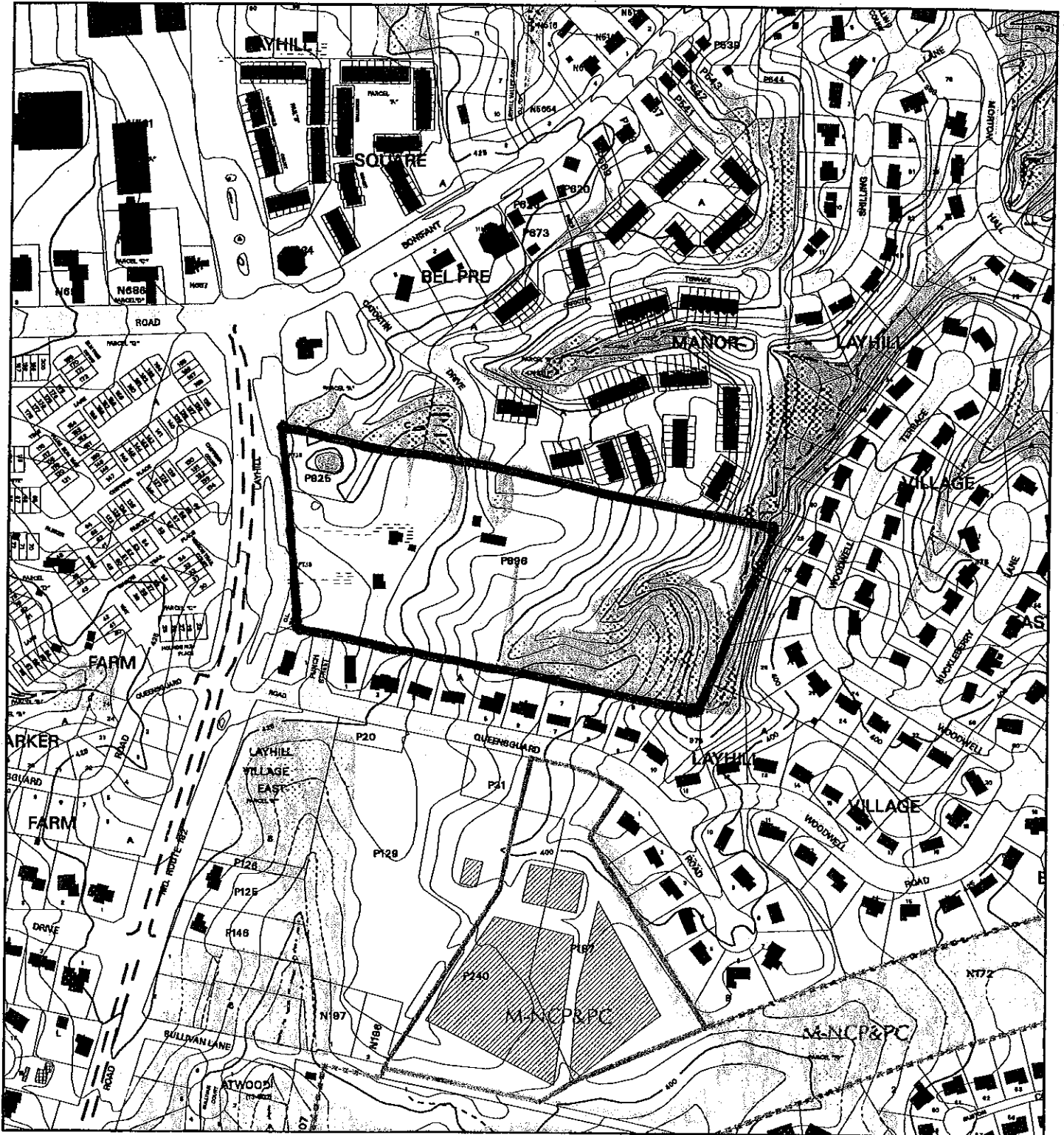
Agenda Item #09 - Subdivision Regulation Waver SRW-02002  
Kum Tarry

Agenda Item #13 - Preliminary Plan 1-02009  
Anscroft Preserve

Agenda Item #15 - Preliminary Plan 1-02024  
The Reserve at Ashton

Attachment

VICINITY MAP FOR  
**NICHOLSON PROPERTY (7-01053)**



Map compiled on July 18, 2001 at 10:12 AM | Site located on base sheet no - 219NW02

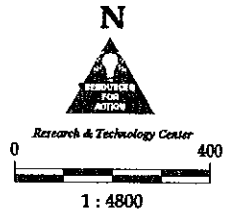
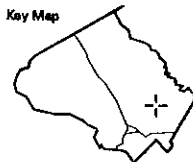
**NOTICE**

The planimetric, property, and topographic information shown on this map is based on copyrighted Map Products from the Montgomery County Department of Park and Planning of the Maryland-National Capital Park and Planning Commission, and may not be copied or reproduced without written permission from M-NCPPC.

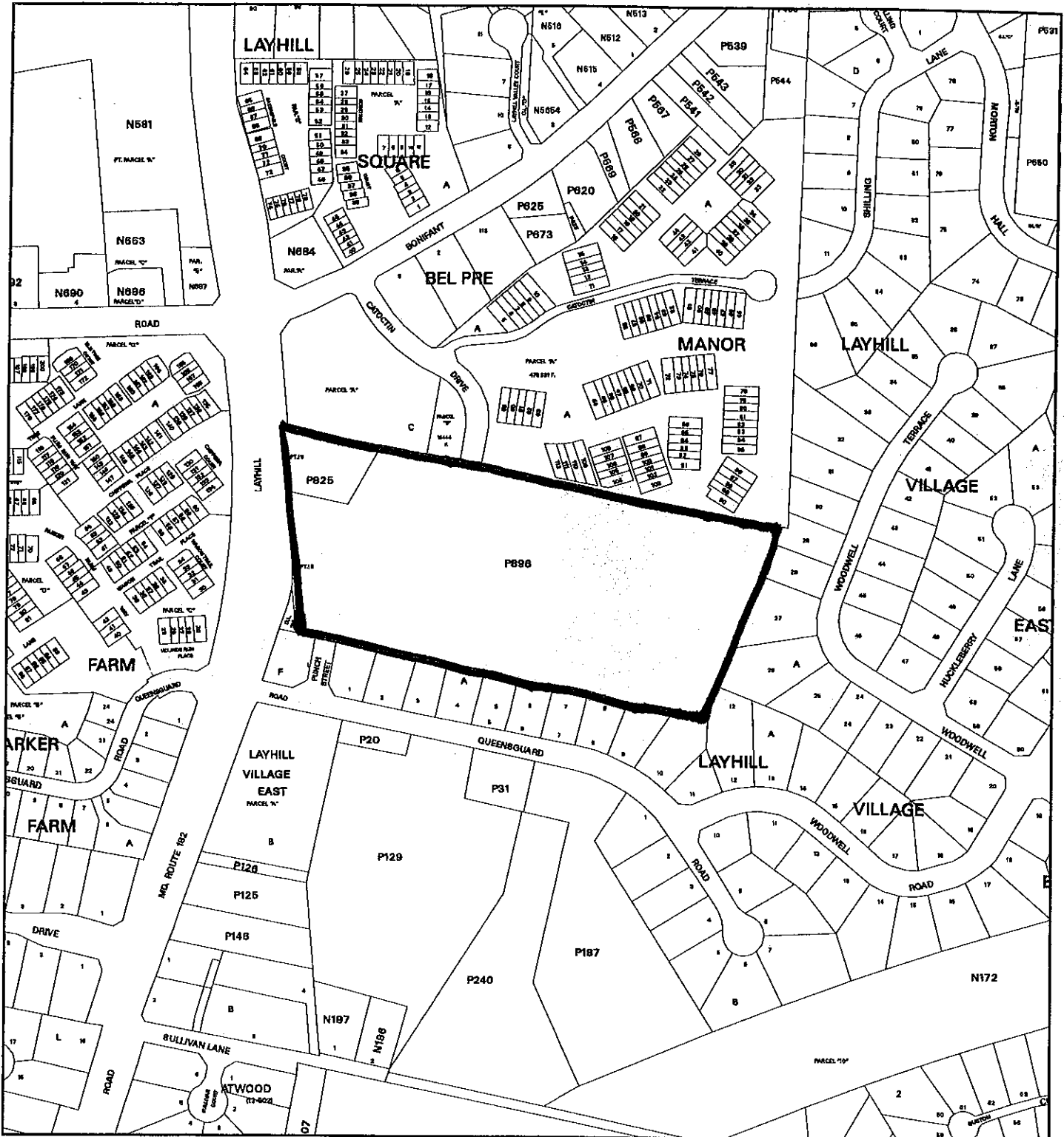
Property lines are compiled by adjusting the property lines to topography created from aerial photography and should not be interpreted as actual field surveys. Planimetric features were compiled from 1:14400 scale aerial photography using stereo photogrammetric methods.

This map is created from a variety of data sources, and may not reflect the most current conditions in any one location and may not be completely accurate or up to date. All map features are approximately within five feet of their true location. This map may not be the same as a map of the same area plotted at an earlier time as the data is continuously updated. Use of this map, other than for general planning purposes is not recommended. - Copyright 1998

Key Map



VICINITY MAP FOR  
**NICHOLSON PROPERTY (7-01053)**



Map compiled on July 18, 2001 at 10:52 AM | Site located on base sheet no - 219NW02

**NOTICE**

The planimetric, property, and topographic information shown on this map is based on copyrighted Map Products from the Montgomery County Department of Park and Planning of the Maryland-National Capital Park and Planning Commission, and may not be copied or reproduced without written permission from M-NCPPC.

Property lines are compiled by adjusting the property lines to topography created from aerial photography and should not be interpreted as actual field surveys. Planimetric features were compiled from 1:14400 scale aerial photography using stereo photogrammetric methods.

This map is created from a variety of data sources, and may not reflect the most current conditions in any one location and may not be completely accurate or up to date. All map features are approximately within five feet of their true location. This map may not be the same as a map of the same area plotted at an earlier time as the data is continuously updated. Use of this map, other than for general planning purposes is not recommended. - Copyright 1998

