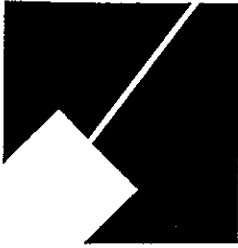


M-NCPPC



MONTGOMERY COUNTY DEPARTMENT OF PARK AND PLANNING

THE MARYLAND-NATIONAL CAPITAL
PARK AND PLANNING COMMISSION

8787 Georgia Avenue
Silver Spring, Maryland 20910-3760

MCPB
Consent Item # 2
1-3-02

December 28, 2001

MEMORANDUM

TO: Montgomery County Planning Board

FROM: Don Ostrander for the Park and Planning Department, 301-495-4525

SUBJECT: Highway Reservations, 2002

RCA for
DO

CONTINUATION OF RESERVATION

Listed below and included with the staff recommendation is one reservation which is due to expire on December 31, 2002.

Sue Layman, Owner – 5.2827 acres
Midcounty Highway (M-83)

STAFF RECOMMENDATION

Approval of Resolution for Item 1 to continue in reservation for six months from January 1, 2002 to June 30, 2002.

DO:kcw
Attachments

Reservation File No. 141

SURVEYOR'S CERTIFICATION

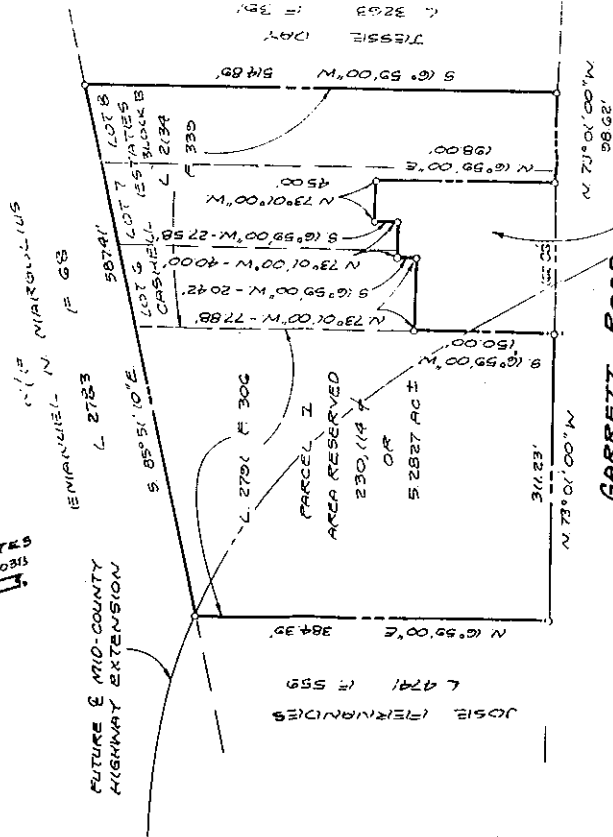
I HEREBY CERTIFY THAT THE PLAN SHOWN HEREON IS CORRECT, THAT IT IS PART OF THE LAND CONVERTED BY CHARLES F. ATKWOOD AND GLENNOR B. ATKWOOD, HIS WIFE, TO HUBERT A. LAYMAN, JR. AND SUE W. LAYMAN, HIS WIFE, BY DEED DATED OCTOBER 31, 1955 AND RECORDED NOVEMBER 7, 1955 IN LIBER 2134 AT FOLIO 335 AMONG THE LAND RECORDS OF MONTGOMERY COUNTY, MARYLAND, AND ALL OF THE LAND CONVERTED BY CLARENCE M. BEATTY AND HAZEL M. BEATTY, HIS WIFE, TO HUBERT LAYMAN, JR. AND SUE W. LAYMAN, HIS WIFE, BY DEED DATED OCTOBER 21, 1960 AND RECORDED OCTOBER 25, 1960 IN LIBER 2134 AT FOLIO 306 AMONG THE AFORESAID RECORDS.

DATE 4/15/93 SURVEYOR Sourabh Munshi PROF. L.S. NO. 10,170
 SOURABH S. MUNSHI

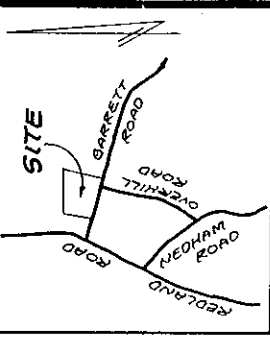
CASHILL ESTATES
 FB 32 PG 20313

EMMANUEL N. NIKAROLLIUS
 F 68
 L 2783
 S 85°51'10"E

FUTURE & MID-COUNTY
 HIGHWAY EXTENSION



AREA NOT INCLUDED
 IN RESERVATION
 27,400 ± OR
 0.6292 AC ±



VICINITY MAP
 SCALE: 1" = 1,200'

CERTIFICATION

I HEREBY CERTIFY THAT PURSUANT TO THE PROVISIONS OF ARTICLE 28 OF THE ANNOTATED CODE OF MARYLAND AND THE REGULATIONS FOR THE SUBDIVISION OF LAND FOR THE MARYLAND-WASHINGTON REGIONAL DISTRICT IN MONTGOMERY COUNTY, ADOPTED BY THE COUNTY COUNCIL FOR MONTGOMERY COUNTY, MARYLAND, OCTOBER 17, 1981, AND BY VIRTUE OF ITS AUTHORITY TO ADMINISTER SAID REGULATIONS, THE MONTGOMERY COUNTY PLANNING BOARD BY RESOLUTION ADOPTED JUNE 24, 1993 HAS DECLARED THE 5.2827 ACRES OF LAND SHOWN HEREON AS PARCEL I TO BE A RESERVATION OF LAND FOR PUBLIC USE AS DEEMED NECESSARY FOR HIGHWAY PURPOSES FOR THE PROPOSED MID-COUNTY HIGHWAY EXTENSION. SAID RESERVATION TO CONTINUE IN FULL FORCE AND EFFECT FOR 5 YEARS.

DATE JUNE 28 1993 EXECUTIVE DIRECTOR
 M. N. C. P.

PARCEL I
 ROCKVILLE (FB) ELECTION DISTRICT
 RESERVATION PLAT
 OF
 LAND FOR PUBLIC USE
**MID - COUNTY
 HIGHWAY EXTENSION**
 MONTGOMERY COUNTY, MARYLAND

SCALE: 1" = 100' APRIL, 1993

RECORDED: 7/29/93
 PLAT BOOK: 170
 PLAT NO.: 19107

203/28/93
 MARYLAND NATIONAL CAPITAL PARK AND PLANNING COMMISSION
 MONTGOMERY COUNTY PLANNING BOARD

APPROVED: JUNE 24 1993
 CHAIRMAN Anthony C. Stojan
 ASST. SECRETARY - TREASURER
 M. N. C. P. AND P. C. FILE NO. 590-49



VANMAR ASSOCIATES INC.
 Engineers, Surveyors-Planners
 2000 North Rock Road
 (301) 831-5015 FAX (301) 831-5003