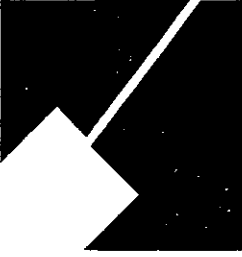


M-NCPPC



MONTGOMERY COUNTY DEPARTMENT OF PARK & PLANNING

THE MARYLAND-NATIONAL CAPITAL  
PARK AND PLANNING COMMISSION

8787 Georgia Avenue  
Silver Spring, Maryland 20910-3760

M E M O R A N D U M

**DATE:** December 28, 2001  
**TO:** Montgomery County Planning Board  
**FROM:** A. Malcolm Shaneman  
Development Review Division  
(301) 495-4587  
**SUBJECT:** Informational Maps for Subdivision Items on the  
Planning Board's Agenda for January 03, 2002.

---

Attached are copies of plan drawings for Items #04, #05, #06, #07, #08. These subdivision items are scheduled for Planning Board consideration on January 03, 2002. The items are further identified as follows:

Agenda Item #04 - Preliminary Plan 1-02051  
Kimbrook Farm

Agenda Item #05 - Preliminary Plan 1-02054  
Brighton Konlls

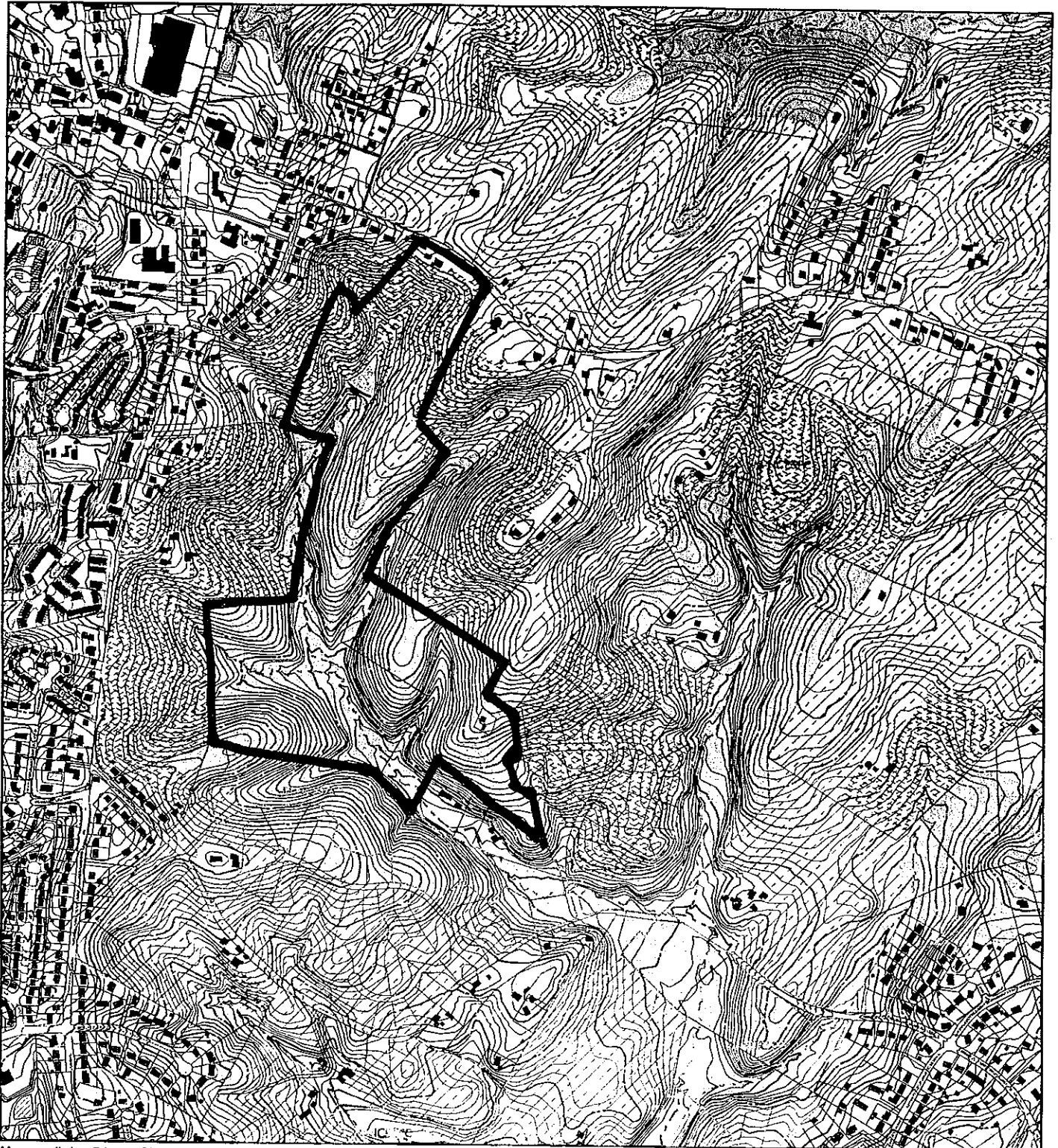
Agenda Item #06 - Preliminary Plan 1-01041  
Seneca Springs

Agenda Item #07 - Preliminary Plan 1-98086  
Solomon Simpson

Agenda Item #08 - Subdivision Regulation Waiver SRW-02003  
Gittings Ha Ha

Attachment

VICINITY MAP FOR  
**SENECA SPRINGS (1-01041)**



Map compiled on February 01, 2001 at 0:21 AM | Site located on base sheet no - 238NW08

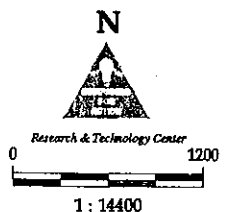
**NOTICE**

The planimetric, property, and topographic information shown on this map is based on copyrighted Map Products from the Montgomery County Department of Park and Planning of the Maryland-National Capital Park and Planning Commission, and may not be copied or reproduced without written permission from M-NCPPC.

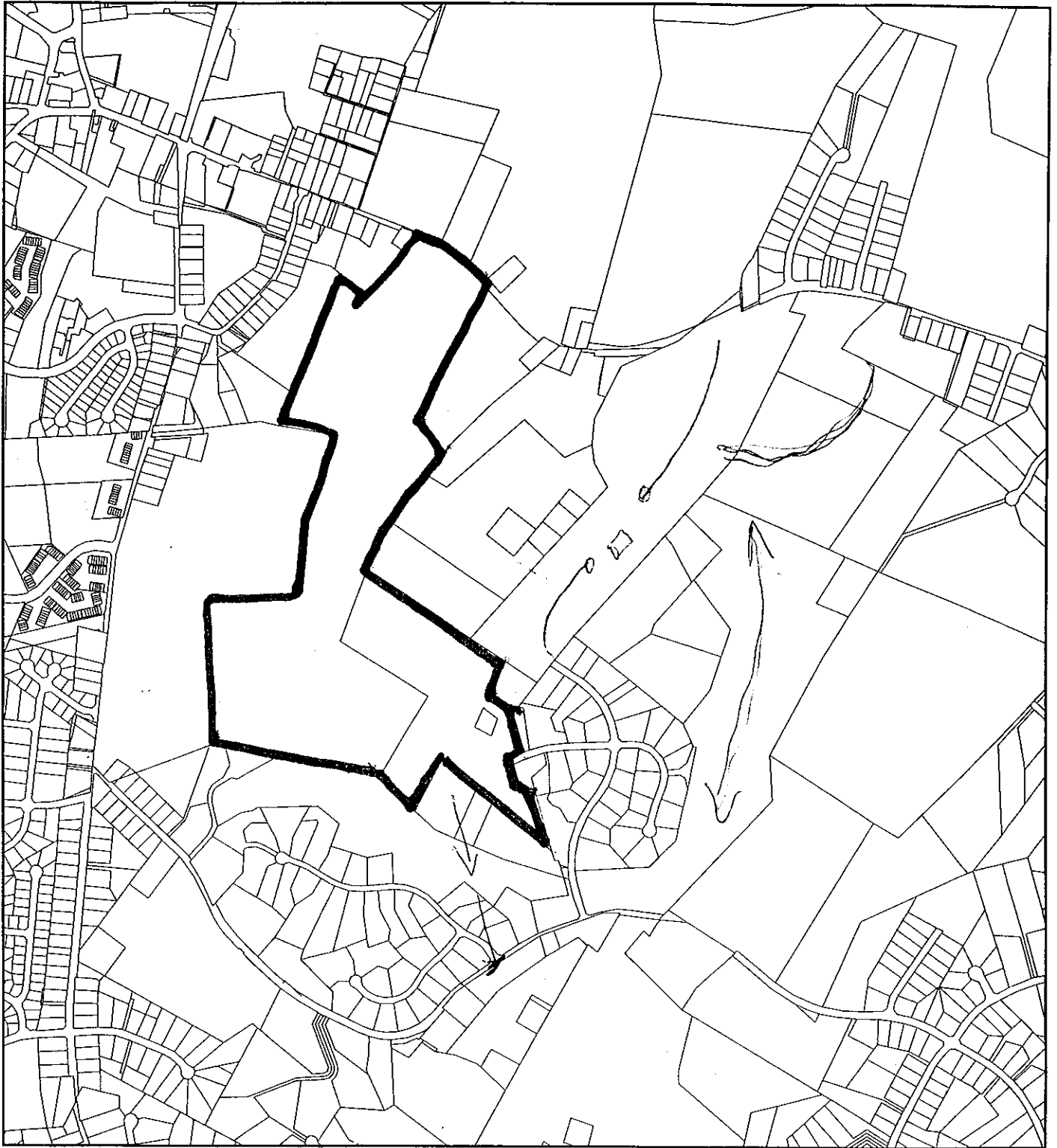
Property lines are compiled by adjusting the property lines to topography created from aerial photography and should not be interpreted as actual field surveys. Planimetric features were compiled from 1:14400 scale aerial photography using stereo photogrammetric methods.

This map is created from a variety of data sources, and may not reflect the most current conditions in any one location and may not be completely accurate or up to date. All map features are approximately within five feet of their true location. This map may not be the same as a map of the same area plotted at an earlier time as the data is continuously updated. Use of this map, other than for general planning purposes is not recommended. - Copyright 1998

**MONTGOMERY COUNTY DEPARTMENT OF PARK AND PLANNING**  
THE MARYLAND-NATIONAL CAPITAL PARK AND PLANNING COMMISSION  
8787 Georgia Avenue - Silver Spring, Maryland 20910-3760



VICINITY MAP FOR  
**SENECA SPRINGS (1-01041)**



Map compiled on February 01, 2001 at 0:16 AM | Site located on base sheet no - 236NW09

**NOTICE**

The planimetric, property, and topographic information shown on this map is based on copyrighted Map Products from the Montgomery County Department of Park and Planning of the Maryland-National Capital Park and Planning Commission, and may not be copied or reproduced without written permission from M-NCPPC.

Property lines are compiled by adjusting the property lines to topography created from aerial photography and should not be interpreted as actual field surveys. Planimetric features were compiled from 1:14400 scale aerial photography using stereo photogrammetric methods.

This map is created from a variety of data sources, and may not reflect the most current conditions in any one location and may not be completely accurate or up to date. All map features are approximately within five feet of their true location. This map may not be the same as a map of the same area plotted at an earlier time as the data is continuously updated. Use of this map, other than for general planning purposes is not recommended. - Copyright 1998

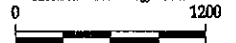
Key Map



N



Research & Technology Center



1 : 14400

**MONTGOMERY COUNTY DEPARTMENT OF PARK AND PLANNING**  
THE MARYLAND-NATIONAL CAPITAL PARK AND PLANNING COMMISSION

2022 8787 Georgia Avenue - Silver Spring, Maryland 20910-3760

