

Item #13



THE MARYLAND-NATIONAL CAPITAL PARK AND PLANNING COMMISSION

MEMORANDUM

DATE: June 21, 2002
TO: Montgomery County Planning Board
FROM: A. Malcolm Shaneman
Development Review Division
(301) 495-4587
SUBJECT: Informational Maps for Subdivision Items on the
Planning Board's Agenda for June 27, 2002.

Attached are copies of plan drawings for Items #11, #12, #13, #14. These subdivision items are scheduled for Planning Board consideration on June 27, 2002. The items are further identified as follows:

Agenda Item #11 - Preliminary Plan 1-02105
Donald B. Griggs Property

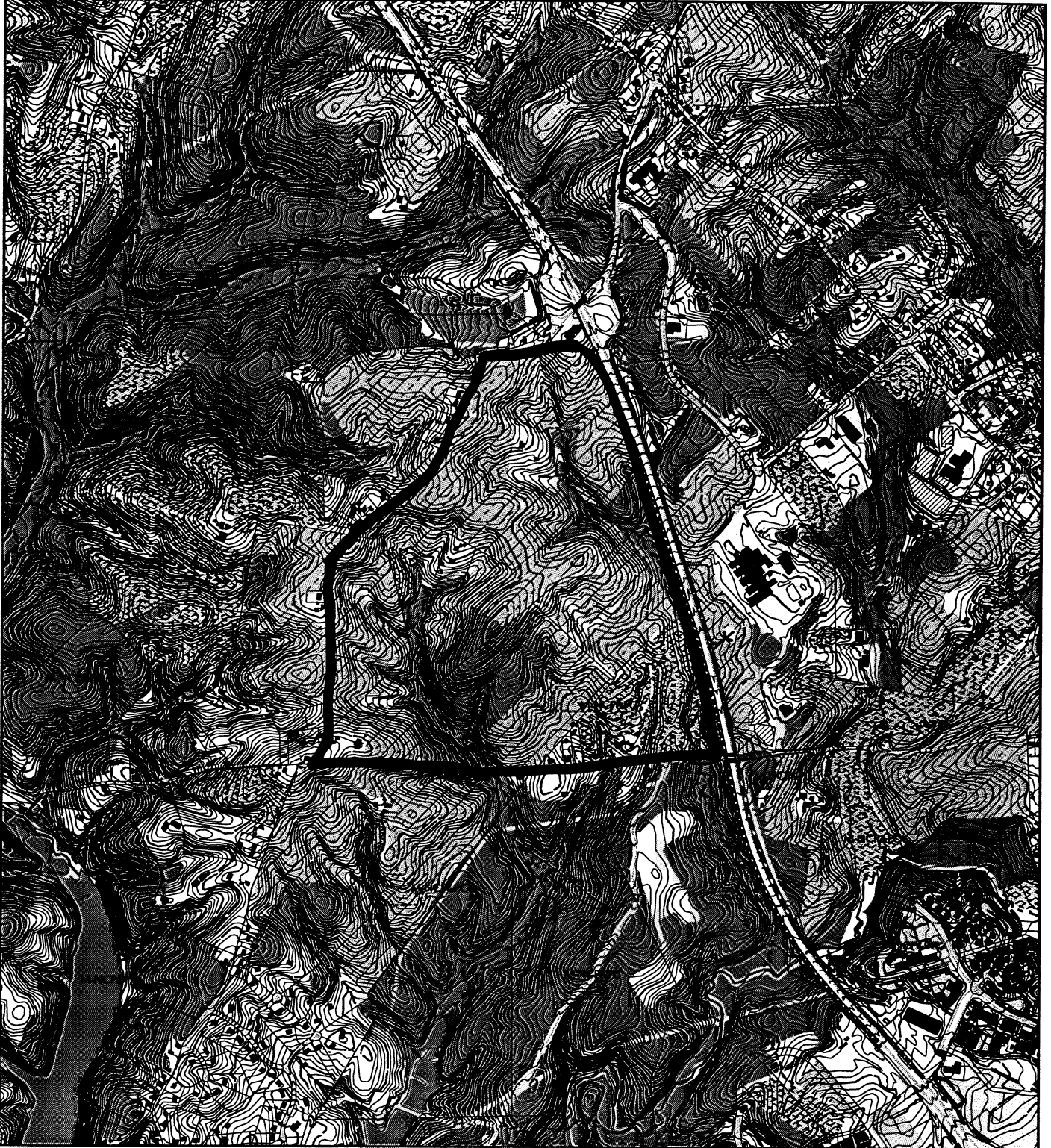
Agenda Item #12 - Subdivision Regulation Waiver SRW-02010
Seneca Highlands

Agenda Item #13 - Pre-Preliminary Plan 7-02042
Cabin Branch

Agenda Item #14 - Preliminary Plan 1-97098
Thompson Farm

Attachment

VICINITY MAP FOR
CABIN BRANCH (7-02042)



Map compiled on June 20, 2002 at 6:03 PM | Site located on base sheet no - 231NW14

NOTICE

The planimetric, property, and topographic information shown on this map is based on copyrighted Map Products from the Montgomery County Department of Park and Planning of the Maryland-National Capital Park and Planning Commission, and may not be copied or reproduced without written permission from M-NCPPC.

Property lines are compiled by adjusting the property lines to topography created from aerial photography and should not be interpreted as actual field surveys. Planimetric features were compiled from 1:14400 scale aerial photography using stereo photogrammetric methods.

This map is created from a variety of data sources, and may not reflect the most current conditions in any one location and may not be completely accurate or up to date. All map features are approximately within five feet of their true location. This map may not be the same as a map of the same area plotted at an earlier time as the data is continuously updated. Use of this map, other than for general planning purposes is not recommended. - Copyright 1998

Key Map



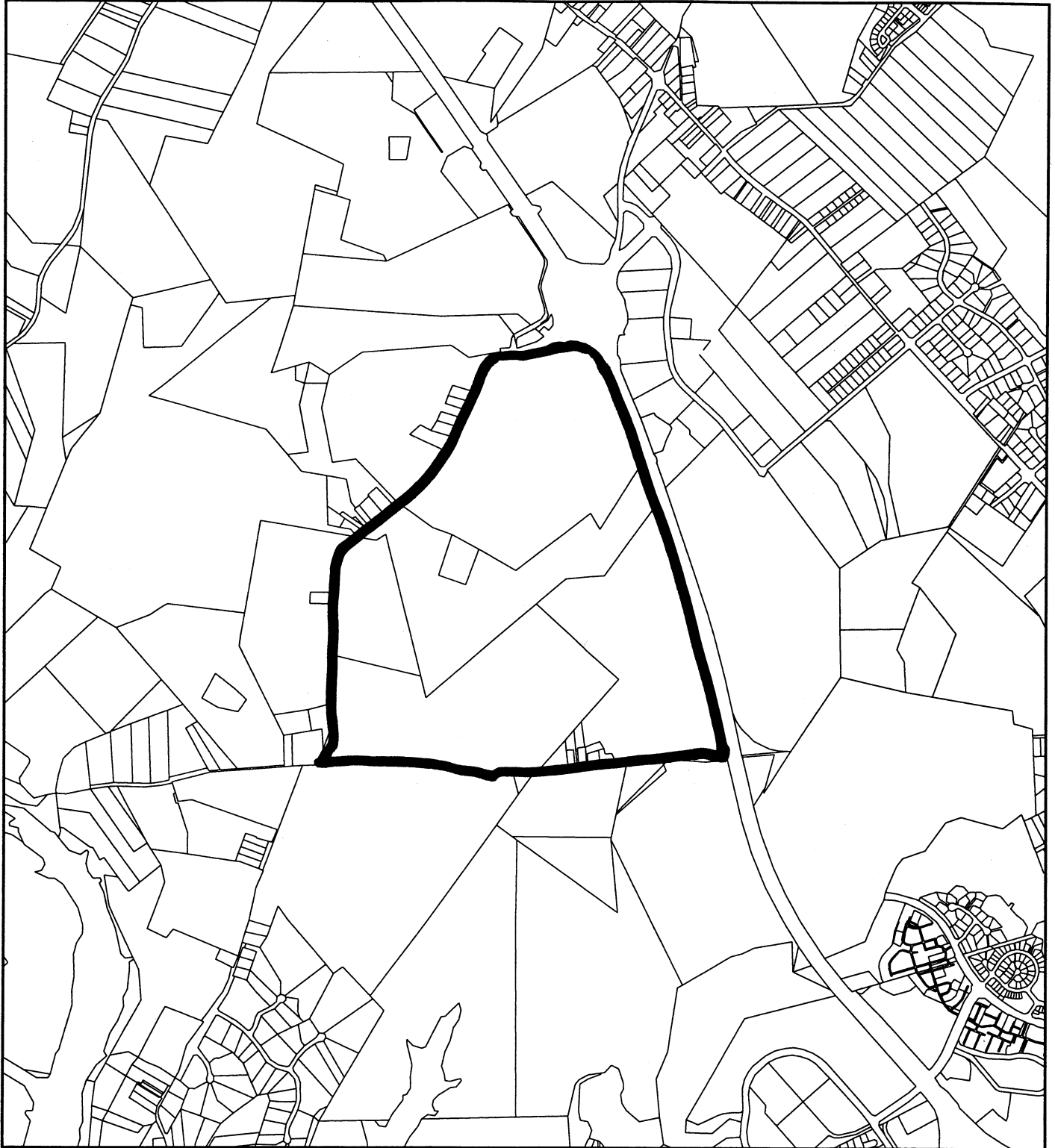
Research & Technology Center



1 : 24000

VICINITY MAP FOR

CABIN BRANCH (7-02042)



Map compiled on June 20, 2002 at 6:30 PM | Site located on base sheet no - 231NW14

NOTICE

The planimetric, property, and topographic information shown on this map is based on copyrighted Map Products from the Montgomery County Department of Park and Planning of the Maryland-National Capital Park and Planning Commission, and may not be copied or reproduced without written permission from M-NCPPC.

Property lines are compiled by adjusting the property lines to topography created from aerial photography and should not be interpreted as actual field surveys. Planimetric features were compiled from 1:14400 scale aerial photography using stereo photogrammetric methods.

This map is created from a variety of data sources, and may not reflect the most current conditions in any one location and may not be completely accurate or up to date. All map features are approximately within five feet of their true location. This map may not be the same as a map of the same area plotted at an earlier time as the data is continuously updated. Use of this map, other than for general planning purposes is not recommended. - Copyright 1998

Key Map



N



Research & Technology Center



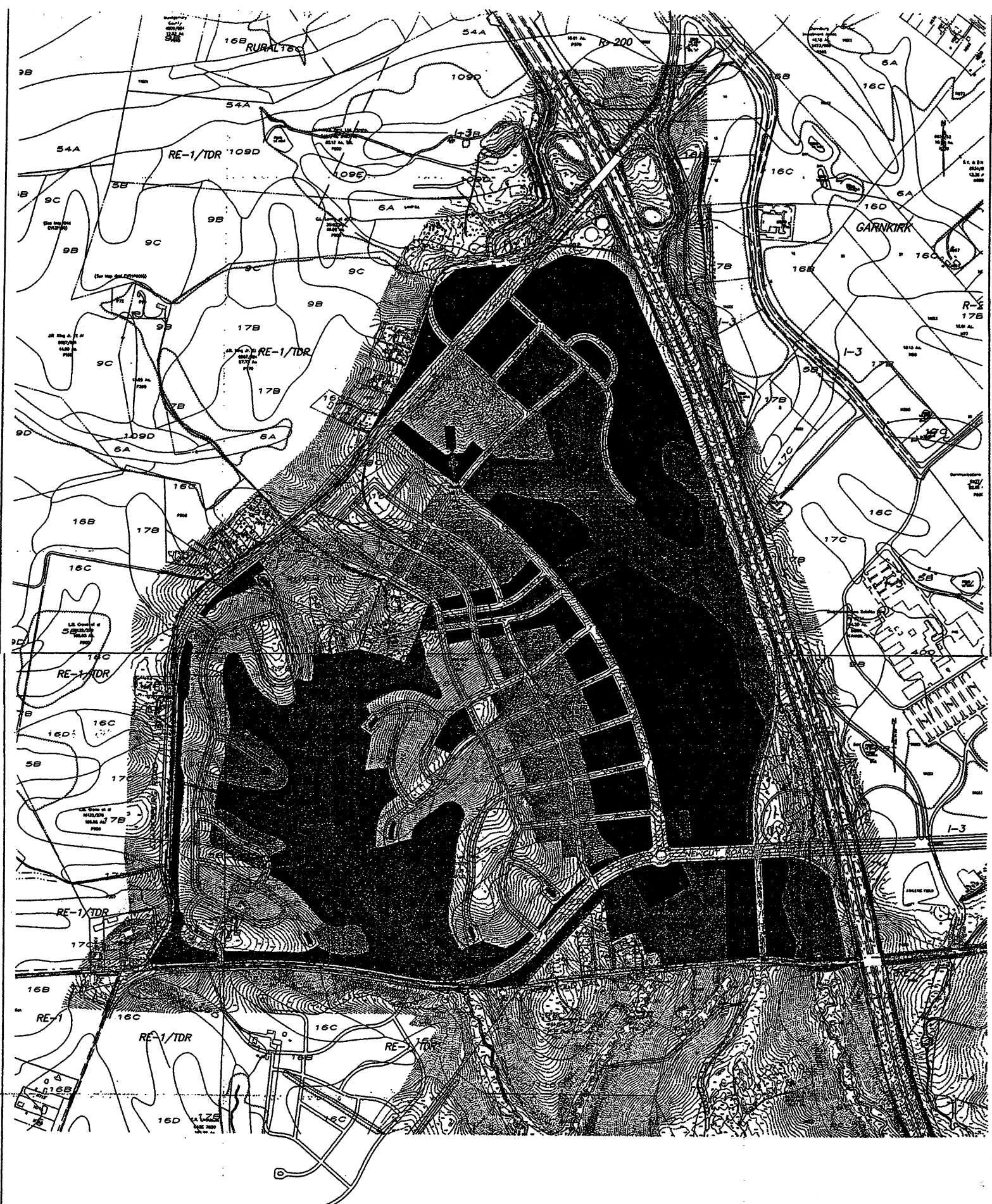
1 : 24000

MONTGOMERY COUNTY DEPARTMENT OF PARK AND PLANNING
THE MARYLAND-NATIONAL CAPITAL PARK AND PLANNING COMMISSION

M-NCPPC

6787 Georgia Avenue - Silver Spring, Maryland 20910-3760

PRELIMINARY NOT FOR CONSTRUCTION



NO.	DATE	BY	REVISION

PRE-APPLICATION
CONCEPT PLAN

Home, Public, Overall & Grade Program
CABIN BRANCH
Curtisbay, Maryland
Division District No. 2
Montgomery County, Maryland

NO.	DATE	BY	REVISION

RODGERS CONSULTING
2580 Gather Road
Columbia, MD 21047
301.548.4700
301.548.4256 (fax)
www.rodgers.com
Enhancing the value of land assets.

DATE: 05/13/10
DRAWN BY: JLD
CHECKED BY: JLD
SCALE: AS SHOWN
PROJECT NO: 1000000000