

Item #13



THE MARYLAND-NATIONAL CAPITAL PARK AND PLANNING COMMISSION

M E M O R A N D U M

DATE: July 26, 2002
TO: Montgomery County Planning Board
FROM: A. Malcolm Shaneman
Development Review Division
(301) 495-4587
SUBJECT: Informational Maps for Subdivision Items on the
Planning Board's Agenda for August 1, 2002.

Attached are copies of plan drawings for Items #09, #11, #13, #14, #15, #16. These subdivision items are scheduled for Planning Board consideration on August 1, 2002. The items are further identified as follows:

Agenda Item #09 - Preliminary Plan 1-02086
Layhill Village

Agenda Item #11 - Preliminary Plan 1-02109
Plyers Mill Estates

Agenda Item #13 - Preliminary Plan 1-02106
Chestnut Hills-Johnson's Addition

Agenda Item #14 - Preliminary Plan 1-02032
Jones Property

Agenda Item #15 - Preliminary Plan 1-02110
Selborne House at Saint Mark's

Agenda Item #16 - Preliminary Plan 1-02075
Inverness Forest

Attachment

VICINITY MAP FOR

CHESTNUT HILLS-JOHNSON'S ADDITION (1-02106)



Map compiled on July 26, 2002 at 4:22 PM | Site located on base sheet no - 214NW02

NOTICE

The planimetric, property, and topographic information shown on this map is based on copyrighted Map Products from the Montgomery County Department of Park and Planning of the Maryland-National Capital Park and Planning Commission, and may not be copied or reproduced without written permission from M-NCPPC.

Property lines are compiled by adjusting the property-lines to topography created from aerial photography and should not be interpreted as actual field surveys. Planimetric features were compiled from 1:14400 scale aerial photography using stereo photogrammetric methods.

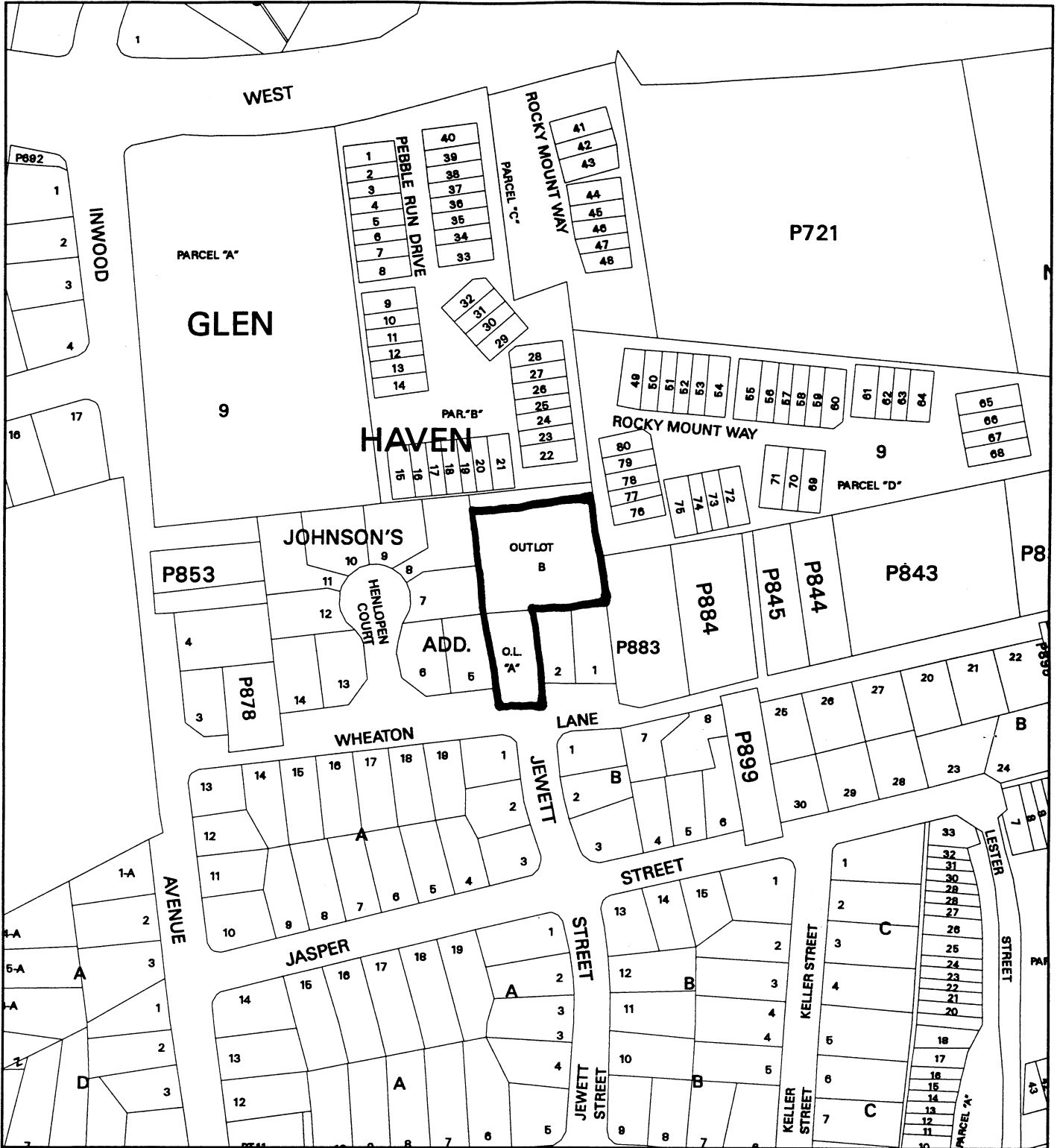
This map is created from a variety of data sources, and may not reflect the most current conditions in any one location and may not be completely accurate or up to date. All map features are approximately within five feet of their true location. This map may not be the same as a map of the same area plotted at an earlier time as the data is continuously updated. Use of this map, other than for general planning purposes is not recommended. - Copyright 1998

Key Map



VICINITY MAP FOR

CHESTNUT HILLS-JOHNSON'S ADDITION (1-02106)



Map compiled on July 24, 2002 at 1:47 AM | Site located on base sheet no - 214NW02

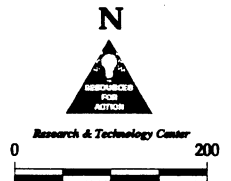
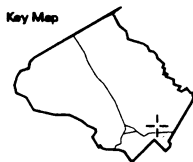
NOTICE

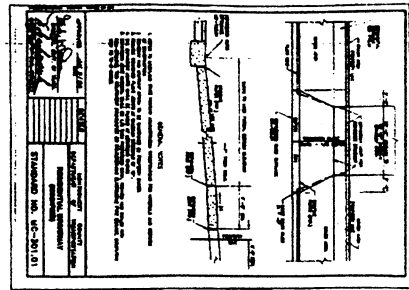
The planimetric, property, and topographic information shown on this map is based on copyrighted Map Products from the Montgomery County Department of Park and Planning of the Maryland-National Capital Park and Planning Commission, and may not be copied or reproduced without written permission from M-NCPPC.

Property lines are compiled by adjusting the property lines to topography created from aerial photography and should not be interpreted as actual field surveys. Planimetric features were compiled from 1:14400 scale aerial photography using stereo photogrammetric methods.

This map is created from a variety of data sources, and may not reflect the most current conditions in any one location and may not be completely accurate or up to date. All map features are approximately within five feet of their true location. This map may not be the same as a map of the same area plotted at an earlier time as the data is continuously updated. Use of this map, other than for general planning purposes is not recommended. - Copyright 1998

Key Map



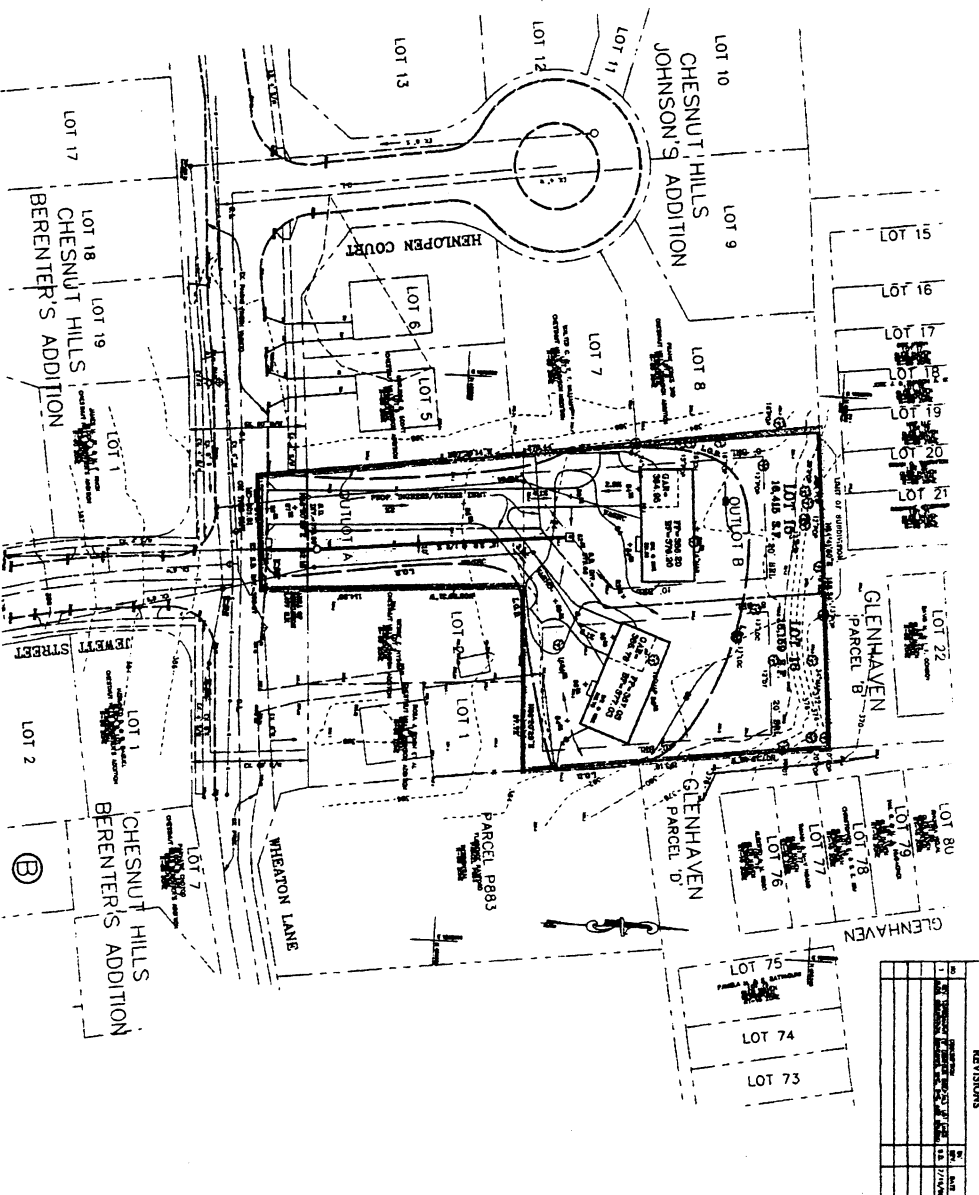


REVISIONS

No.	Date	Description
1	07/15/02	Initial Issue
2	07/15/02	Revised to show final survey data
3	07/15/02	Revised to show final survey data
4	07/15/02	Revised to show final survey data
5	07/15/02	Revised to show final survey data
6	07/15/02	Revised to show final survey data
7	07/15/02	Revised to show final survey data
8	07/15/02	Revised to show final survey data
9	07/15/02	Revised to show final survey data
10	07/15/02	Revised to show final survey data
11	07/15/02	Revised to show final survey data
12	07/15/02	Revised to show final survey data
13	07/15/02	Revised to show final survey data
14	07/15/02	Revised to show final survey data
15	07/15/02	Revised to show final survey data
16	07/15/02	Revised to show final survey data
17	07/15/02	Revised to show final survey data
18	07/15/02	Revised to show final survey data
19	07/15/02	Revised to show final survey data
20	07/15/02	Revised to show final survey data
21	07/15/02	Revised to show final survey data
22	07/15/02	Revised to show final survey data
23	07/15/02	Revised to show final survey data
24	07/15/02	Revised to show final survey data
25	07/15/02	Revised to show final survey data
26	07/15/02	Revised to show final survey data
27	07/15/02	Revised to show final survey data
28	07/15/02	Revised to show final survey data
29	07/15/02	Revised to show final survey data
30	07/15/02	Revised to show final survey data

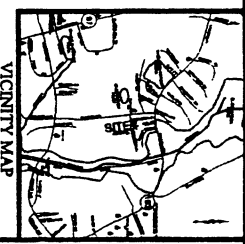
PROPERTY DATA

Lot No.	Area (Ac.)	Area (Sq. Ft.)	Area (Sq. Yds.)
LOT 1	0.10	6,918	1,000
LOT 2	0.10	6,918	1,000
LOT 3	0.10	6,918	1,000
LOT 4	0.10	6,918	1,000
LOT 5	0.10	6,918	1,000
LOT 6	0.10	6,918	1,000
LOT 7	0.10	6,918	1,000
LOT 8	0.10	6,918	1,000
LOT 9	0.10	6,918	1,000
LOT 10	0.10	6,918	1,000
LOT 11	0.10	6,918	1,000
LOT 12	0.10	6,918	1,000
LOT 13	0.10	6,918	1,000
LOT 14	0.10	6,918	1,000
LOT 15	0.10	6,918	1,000
LOT 16	0.10	6,918	1,000
LOT 17	0.10	6,918	1,000
LOT 18	0.10	6,918	1,000
LOT 19	0.10	6,918	1,000
LOT 20	0.10	6,918	1,000
LOT 21	0.10	6,918	1,000
LOT 22	0.10	6,918	1,000
LOT 23	0.10	6,918	1,000
LOT 24	0.10	6,918	1,000
LOT 25	0.10	6,918	1,000
LOT 26	0.10	6,918	1,000
LOT 27	0.10	6,918	1,000
LOT 28	0.10	6,918	1,000
LOT 29	0.10	6,918	1,000
LOT 30	0.10	6,918	1,000



REVISIONS

No.	Date	Description
1	07/15/02	Initial Issue
2	07/15/02	Revised to show final survey data
3	07/15/02	Revised to show final survey data
4	07/15/02	Revised to show final survey data
5	07/15/02	Revised to show final survey data
6	07/15/02	Revised to show final survey data
7	07/15/02	Revised to show final survey data
8	07/15/02	Revised to show final survey data
9	07/15/02	Revised to show final survey data
10	07/15/02	Revised to show final survey data
11	07/15/02	Revised to show final survey data
12	07/15/02	Revised to show final survey data
13	07/15/02	Revised to show final survey data
14	07/15/02	Revised to show final survey data
15	07/15/02	Revised to show final survey data
16	07/15/02	Revised to show final survey data
17	07/15/02	Revised to show final survey data
18	07/15/02	Revised to show final survey data
19	07/15/02	Revised to show final survey data
20	07/15/02	Revised to show final survey data
21	07/15/02	Revised to show final survey data
22	07/15/02	Revised to show final survey data
23	07/15/02	Revised to show final survey data
24	07/15/02	Revised to show final survey data
25	07/15/02	Revised to show final survey data
26	07/15/02	Revised to show final survey data
27	07/15/02	Revised to show final survey data
28	07/15/02	Revised to show final survey data
29	07/15/02	Revised to show final survey data
30	07/15/02	Revised to show final survey data



CERTIFICATE OF REGISTERED SURVEYOR:
 I HEREBY CERTIFY THAT THE BOUNDARY LINE DATA DRAWN HEREON WAS TAKEN FROM A PRELIMINARY 2ND SURVEY BY DEWBERRY & DAVIS LLC, AND THAT THE DATA DRAWN HEREON IS THE RESULT OF A FINAL SURVEY AND IS ACCURATE AND CORRECT TO THE BEST OF MY KNOWLEDGE AND BELIEF. I HAVE NOT BEEN ADVISED OF ANY CHANGES TO THE BOUNDARY LINE DATA SINCE THE DATE OF THE SURVEY. I HAVE REVIEWED THE DATA AND FOUND IT TO BE ACCURATE AND CORRECT TO THE BEST OF MY KNOWLEDGE AND BELIEF. I HAVE THEREFORE DRAWN THE DATA AND ACCURATELY REPRESENTED THE SAME ON THIS PLAN.

REGISTERED PROFESSIONAL LAND SURVEYOR
 DEWBERRY & DAVIS LLC
 804 WEST DUNWOOD AVENUE, SUITE 200
 CHATTAHOOCHEE, MD 20778-1414
 (301) 943-8300 FAX: (301) 258-7607

DATE
 JULY 2002

PRELIMINARY SUBDIVISION PLAN
CHESTNUT HILLS - JOHNSON'S ADDITION
LOTS 15 & 16

13TH ELECTION DISTRICT 1-02106 MONTGOMERY COUNTY, MARYLAND

CONTRACT PURCHASER:
 K&N CONSTRUCTION COMPANY
 12211 COUNSEL AVENUE
 ROCKVILLE MD 20850
 PHONE: (301) 881-1518
 FAX: (301) 881-1517

Dewberry & Davis LLC
 A Dewberry Company
 804 West Dunwood Avenue, Suite 200
 Chhattahoochee, MD 20778-1414
 (301) 943-8300 Fax: (301) 258-7607

Engineers
Planners
Surveyors
Landscapers
Architects

DATE
 JULY 2002

R-200