



THE MARYLAND-NATIONAL CAPITAL PARK AND PLANNING COMMISSION

**M E M O R A N D U M**

**DATE:** September 06, 2002  
**TO:** Montgomery County Planning Board  
**FROM:** A. Malcolm Shaneman  
Development Review Division  
(301) 495-4587  
**SUBJECT:** Informational Maps for Subdivision Items on the  
Planning Board's Agenda for September 12, 2002.

---

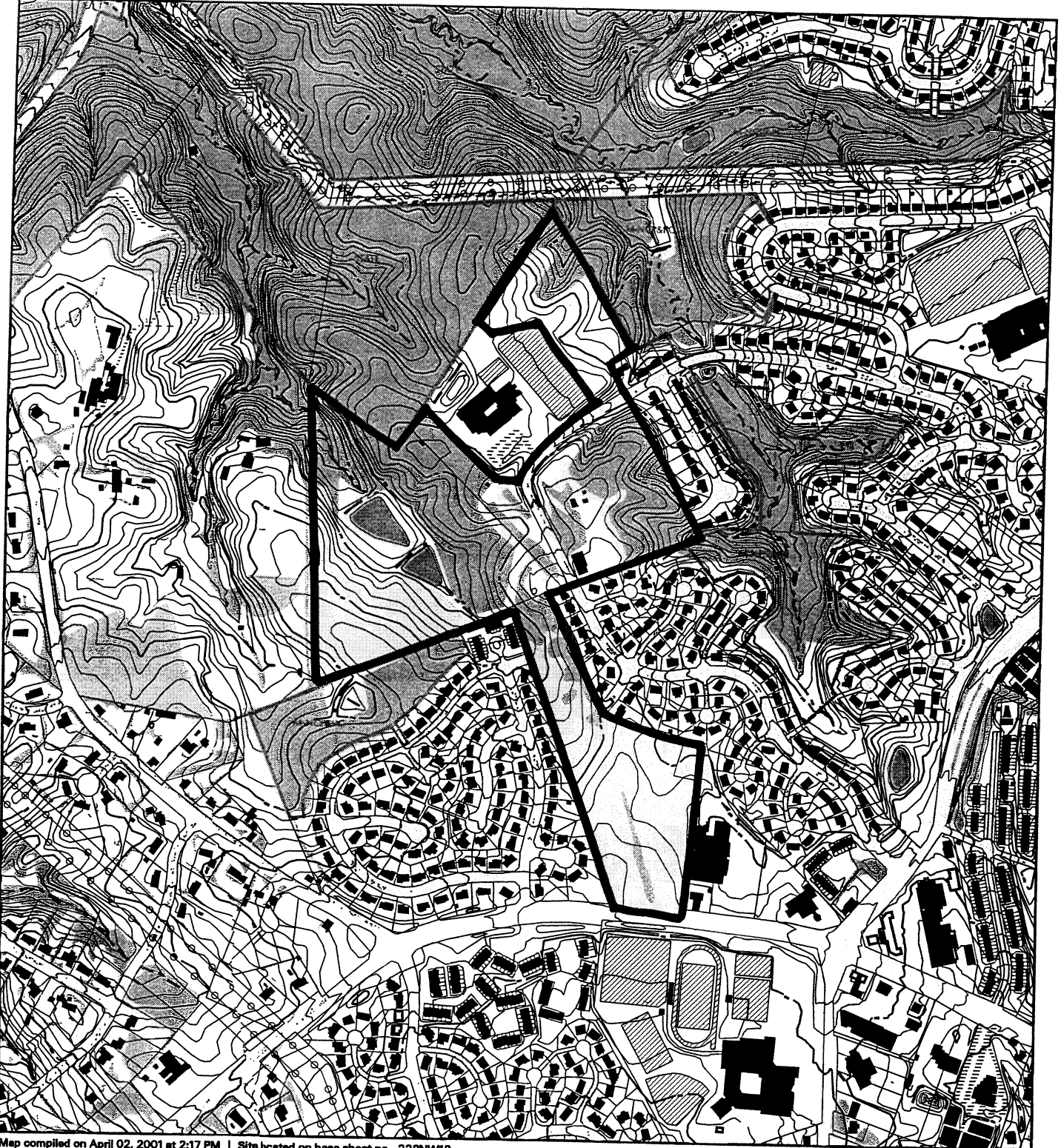
Attached are copies of plan drawings for Items #12, #14, #15, #16, #17. These subdivision items are scheduled for Planning Board consideration on September 12, 2002. The items are further identified as follows:

- Agenda Item #12 - Preliminary Plan 1-02086  
Layhill Village
- Agenda Item #14 - Preliminary Plan 1-01078/SRW-02012  
Clarksburg Ridge
- Agenda Item #15 - Preliminary Plan 1-98082  
Fertile Meadows
- Agenda Item #16 - Preliminary Plan 1-02017  
Henderson Corner, Parcel E
- Agenda Item #17 - Preliminary Plan 1-01058  
Johnson Property

Attachment

VICINITY MAP FOR

# JOHNSON PROPERTY (1-01058)



Map compiled on April 02, 2001 at 2:17 PM | Site located on base sheet no - 222NW12

## NOTICE

The planimetric, property, and topographic information shown on this map is based on copyrighted Map Products from the Montgomery County Department of Park and Planning of the Maryland-National Capital Park and Planning Commission, and may not be copied or reproduced without written permission from M-NCPPC.

Property lines are compiled by adjusting the property lines to topography created from aerial photography using stereo photogrammetric methods. Planimetric features were compiled from 1:14,400 scale aerial photography and should not be interpreted as actual field surveys.

This map is created from a variety of data sources, and may not reflect the most current conditions in any one location and may not be completely accurate or up to date. All map features are approximately within five feet of their true location. This map may not be the same as a map of the same area plotted at an earlier time as the data is continuously updated. Use of this map, other than for general planning purposes is not recommended. - Copyright 1998

Key Map



1 : 9600

VICINITY MAP FOR

# JOHNSON PROPERTY (1-01058)



Map compiled on April 02, 2001 at 3:22 PM | Site located on base sheet no - 222NW12

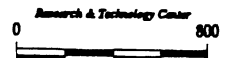
## NOTICE

The planimetric, property, and topographic information shown on this map is based on copyrighted Map Products from the Montgomery County Department of Park and Planning of the Maryland-National Capital Park and Planning Commission, and may not be copied or reproduced without written permission from M-NCPPC.

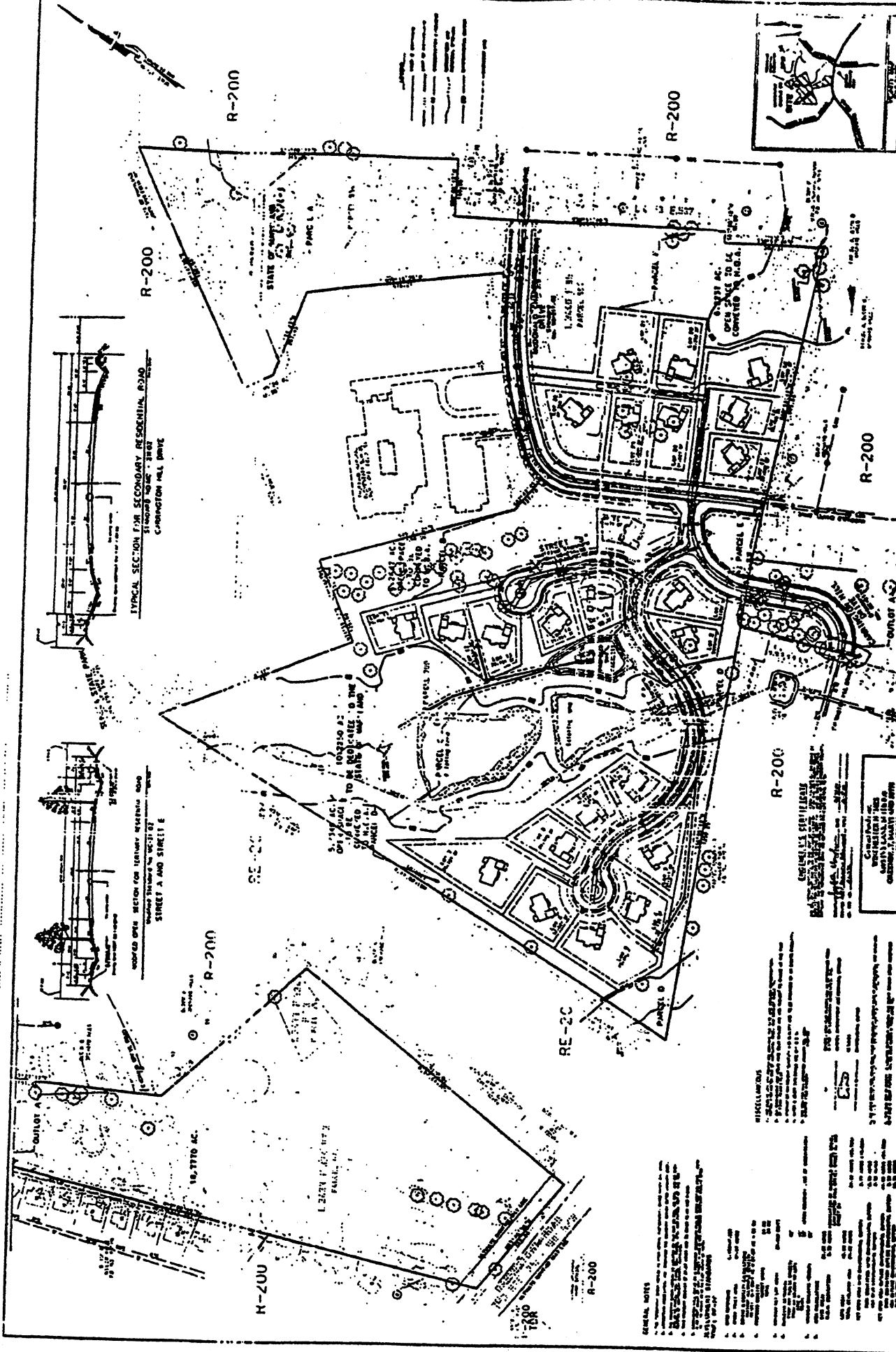
Property lines are compiled by adjusting the property lines to topography created from aerial photography and should not be interpreted as actual field surveys. Planimetric features were compiled from 1:14400 scale aerial photography using stereo photogrammetric methods.

This map is created from a variety of data sources, and may not reflect the most current conditions in any one location and may not be completely accurate or up to date. All map features are approximately within five feet of their true location. This map may not be the same as a map of the same area plotted at an earlier time as the data is continuously updated. Use of this map, other than for general planning purposes is not recommended. - Copyright 1988

Key Map



1 : 9600

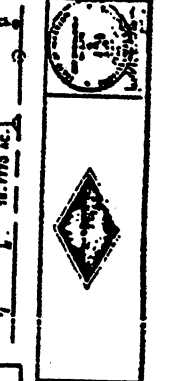


**PRELIMINARY PLAN 101CS**

**JOHNSON PROPERTY**  
 Parcels 70, 700, 954 & 554  
 66 (Overlaid) ELECTION DISTRICT  
 MONTGOMERY COUNTY, MARYLAND

**GENERAL NOTES**

1. ALL UTILITIES TO BE LOCATED AS SHOWN ON THIS PLAN.
2. ALL UTILITIES TO BE DEEPENED TO A MINIMUM OF 48" BELOW FINISHED GRADE.
3. ALL UTILITIES TO BE LOCATED AS SHOWN ON THIS PLAN.
4. ALL UTILITIES TO BE DEEPENED TO A MINIMUM OF 48" BELOW FINISHED GRADE.
5. ALL UTILITIES TO BE LOCATED AS SHOWN ON THIS PLAN.
6. ALL UTILITIES TO BE DEEPENED TO A MINIMUM OF 48" BELOW FINISHED GRADE.



NO.	DATE	DESCRIPTION
1	10/1/77	PRELIMINARY PLAN
2	10/1/77	REVISIONS
3	10/1/77	REVISIONS
4	10/1/77	REVISIONS
5	10/1/77	REVISIONS
6	10/1/77	REVISIONS
7	10/1/77	REVISIONS
8	10/1/77	REVISIONS
9	10/1/77	REVISIONS
10	10/1/77	REVISIONS

**LOIEDERMAN ASSOCIATES, INC.**  
 Consulting Land Planning and Surveying Engineers

10100 Rockville Pike, Suite 200, Rockville, MD 20850  
 Phone: (301) 762-1000

**GENERAL NOTES**

1. ALL UTILITIES TO BE LOCATED AS SHOWN ON THIS PLAN.
2. ALL UTILITIES TO BE DEEPENED TO A MINIMUM OF 48" BELOW FINISHED GRADE.
3. ALL UTILITIES TO BE LOCATED AS SHOWN ON THIS PLAN.
4. ALL UTILITIES TO BE DEEPENED TO A MINIMUM OF 48" BELOW FINISHED GRADE.
5. ALL UTILITIES TO BE LOCATED AS SHOWN ON THIS PLAN.
6. ALL UTILITIES TO BE DEEPENED TO A MINIMUM OF 48" BELOW FINISHED GRADE.

**REVISIONS**

DATE: 10/1/77

BY: [Signature]

FOR: [Signature]

