

Item # 4



THE MARYLAND-NATIONAL CAPITAL PARK AND PLANNING COMMISSION

M E M O R A N D U M

DATE: November 08, 2002
TO: Montgomery County Planning Board
FROM: A. Malcolm Shaneman
Development Review Division
(301) 495-4587
SUBJECT: Informational Maps for Subdivision Items on the
Planning Board's Agenda for November 14, 2002.

Attached are copies of plan drawings for Items #04, #05, #06. These subdivision items are scheduled for Planning Board consideration on November 14, 2002. The items are further identified as follows:

Agenda Item #04 - Pre-Preliminary Plan 7-03005
Potomac Country Corner

Agenda Item #05 - Preliminary Plan 1-03011
Pleasant Hills

Agenda Item #06 - Preliminary Plan 1-03000
Kensington Heights

Attachment

VICINITY MAP FOR

POTOMAC COUNTRY CORNER (7-03005)



Map compiled on October 09, 2002 at 1:50 PM | Site located on base sheet no - 220NW10

NOTICE

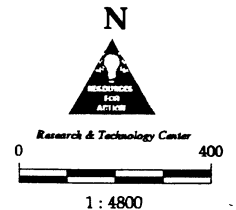
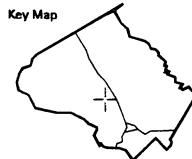
The planimetric, property, and topographic information shown on this map is based on copyrighted Map Products from the Montgomery County Department of Park and Planning of the Maryland-National Capital Park and Planning Commission, and may not be copied or reproduced without written permission from M-NCPPC.

Property lines are compiled by adjusting the property lines to topography created from aerial photography and should not be interpreted as actual field surveys. Planimetric features were compiled from 1:14400 scale aerial photography using stereo photogrammetric methods.

This map is created from a variety of data sources, and may not reflect the most current conditions in any one location and may not be completely accurate or up to date. All map features are approximately within five feet of their true location. This map may not be the same as a map of the same area plotted at an earlier time as the data is continuously updated. Use of this map, other than for general planning purposes is not recommended. - Copyright 1998

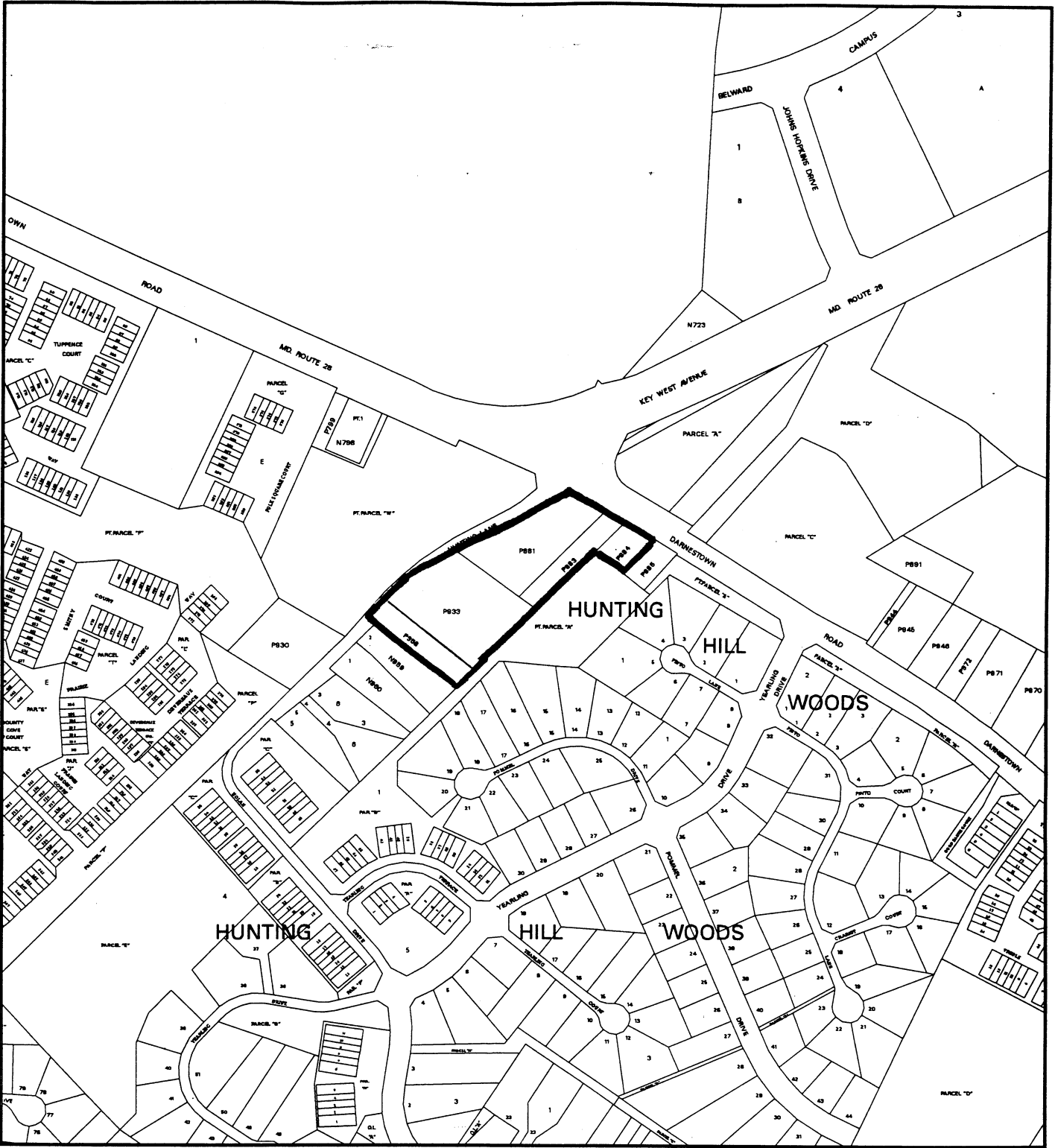
MONTGOMERY COUNTY DEPARTMENT OF PARK AND PLANNING
THE MARYLAND-NATIONAL CAPITAL PARK AND PLANNING COMMISSION
8787 Georgia Avenue - Silver Spring, Maryland 20910-3760

Key Map



VICINITY MAP FOR

POTOMAC COUNTRY CORNER (7-03005)



Map compiled on October 09, 2002 at 12:44 PM | Site located on base sheet no - 220NW10

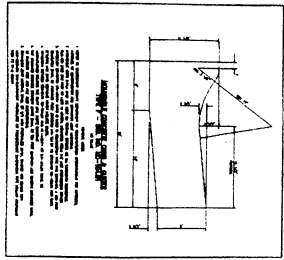
NOTICE

The planimetric, property, and topographic information shown on this map is based on copyrighted Map Products from the Montgomery County Department of Park and Planning of the Maryland-National Capital Park and Planning Commission, and may not be copied or reproduced without written permission from M-NCPPC.

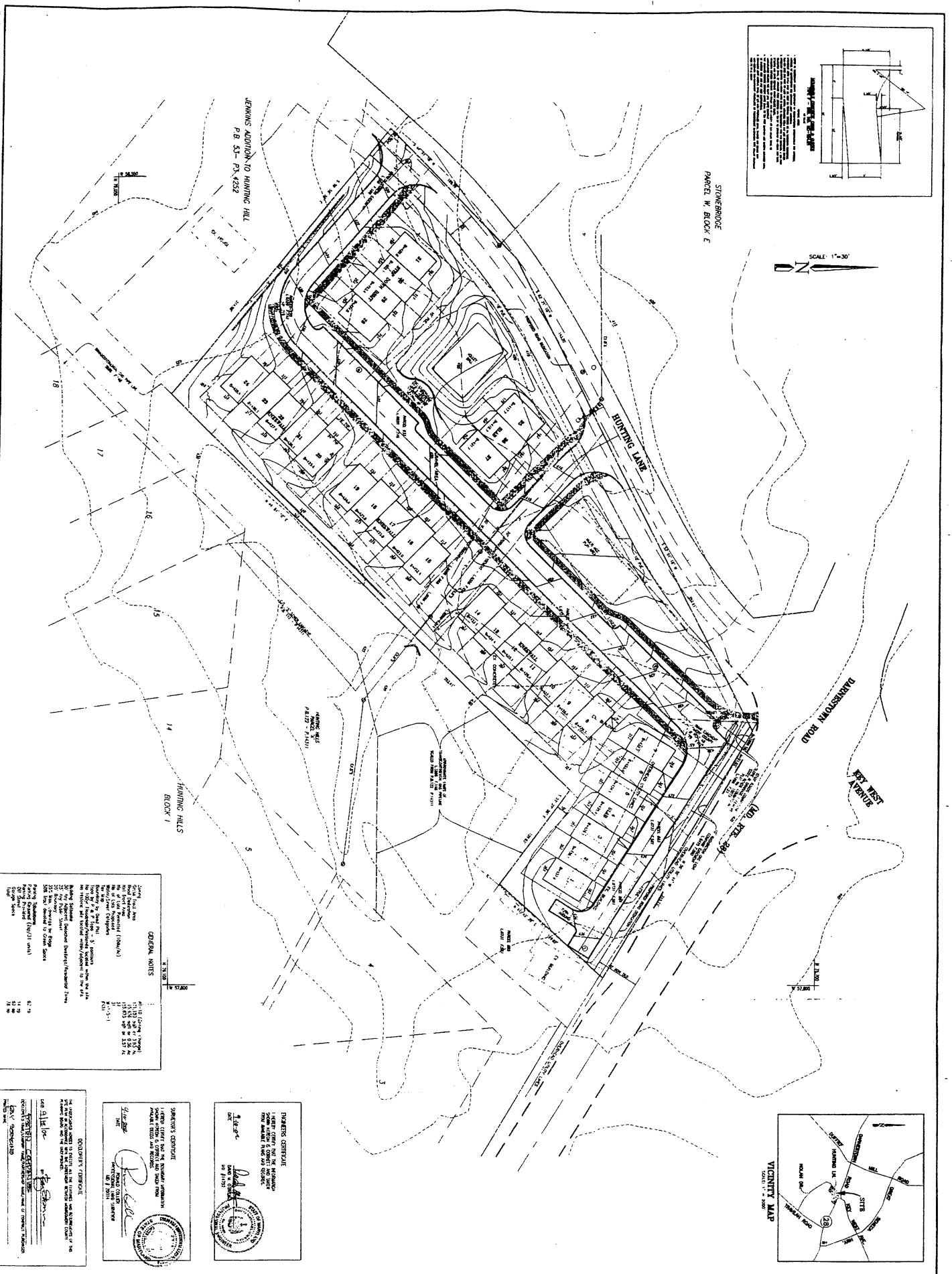
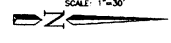
Property lines are compiled by adjusting the property lines to topography created from aerial photography and should not be interpreted as actual field surveys. Planimetric features were compiled from 1:14400 scale aerial photography using stereo photogrammetric methods.

This map is created from a variety of data sources, and may not reflect the most current conditions in any one location and may not be completely accurate or up to date. All map features are approximately within five feet of their true location. This map may not be the same as a map of the same area plotted at an earlier time as the data is continuously updated. Use of this map, other than for general planning purposes is not recommended. - Copyright 1998





STONEBRIDGE
PARCEL W, BLOCK E



GENERAL NOTES

1. All dimensions are in feet and inches.
2. All bearings are in degrees, minutes and seconds.
3. All curves are in feet.
4. All areas are in square feet.
5. All volumes are in cubic feet.
6. All elevations are in feet above mean sea level.
7. All bearings and distances are as shown on the plan.
8. All bearings and distances are as shown on the plan.
9. All bearings and distances are as shown on the plan.
10. All bearings and distances are as shown on the plan.

DESIGNER'S CERTIFICATE
I, the undersigned, being duly licensed and qualified as a Professional Engineer in the State of Maryland, do hereby certify that the above is a true and correct copy of the original plan as shown to me by the client, and that I am not aware of any fraud or error in the same.

[Signature]
Professional Engineer
No. 12345
State of Maryland

PLANNING COMMISSION
I, the undersigned, being duly licensed and qualified as a Professional Planner in the State of Maryland, do hereby certify that the above is a true and correct copy of the original plan as shown to me by the client, and that I am not aware of any fraud or error in the same.

[Signature]
Professional Planner
No. 67890
State of Maryland

PRE-PRELIMINARY PLAN
POTOMAC COUNTRY CORNER
DARNESTOWN (6th) ELECTION DISTRICT
MONTGOMERY COUNTY, MARYLAND

CPI Charles F. Johnson & Associates, Inc.
PLANNERS, ENGINEERS, LANDSCAPE ARCHITECTS, SURVEYORS
OR EIGHT ROAD, SUITE 200, SILVER SPRING, MARYLAND 20910
Telephone: 301-584-1111 Fax: 301-584-1112
FREDERICK, MD. FARMERSVILLE, MD.

| | | |
|-----|--------|------------------|
| NO. | DATE | DESCRIPTION |
| 1 | 1/1/00 | PRELIMINARY PLAN |
| 2 | 1/1/00 | PRELIMINARY PLAN |
| 3 | 1/1/00 | PRELIMINARY PLAN |
| 4 | 1/1/00 | PRELIMINARY PLAN |
| 5 | 1/1/00 | PRELIMINARY PLAN |
| 6 | 1/1/00 | PRELIMINARY PLAN |
| 7 | 1/1/00 | PRELIMINARY PLAN |
| 8 | 1/1/00 | PRELIMINARY PLAN |
| 9 | 1/1/00 | PRELIMINARY PLAN |
| 10 | 1/1/00 | PRELIMINARY PLAN |