

Item # 5



THE MARYLAND-NATIONAL CAPITAL PARK AND PLANNING COMMISSION

MEMORANDUM

DATE: November 08, 2002
TO: Montgomery County Planning Board
FROM: A. Malcolm Shaneman
Development Review Division
(301) 495-4587
SUBJECT: Informational Maps for Subdivision Items on the
Planning Board's Agenda for November 14, 2002.

Attached are copies of plan drawings for Items #04, #05, #06. These subdivision items are scheduled for Planning Board consideration on November 14, 2002. The items are further identified as follows:

Agenda Item #04 - Pre-Preliminary Plan 7-03005
Potomac Country Corner

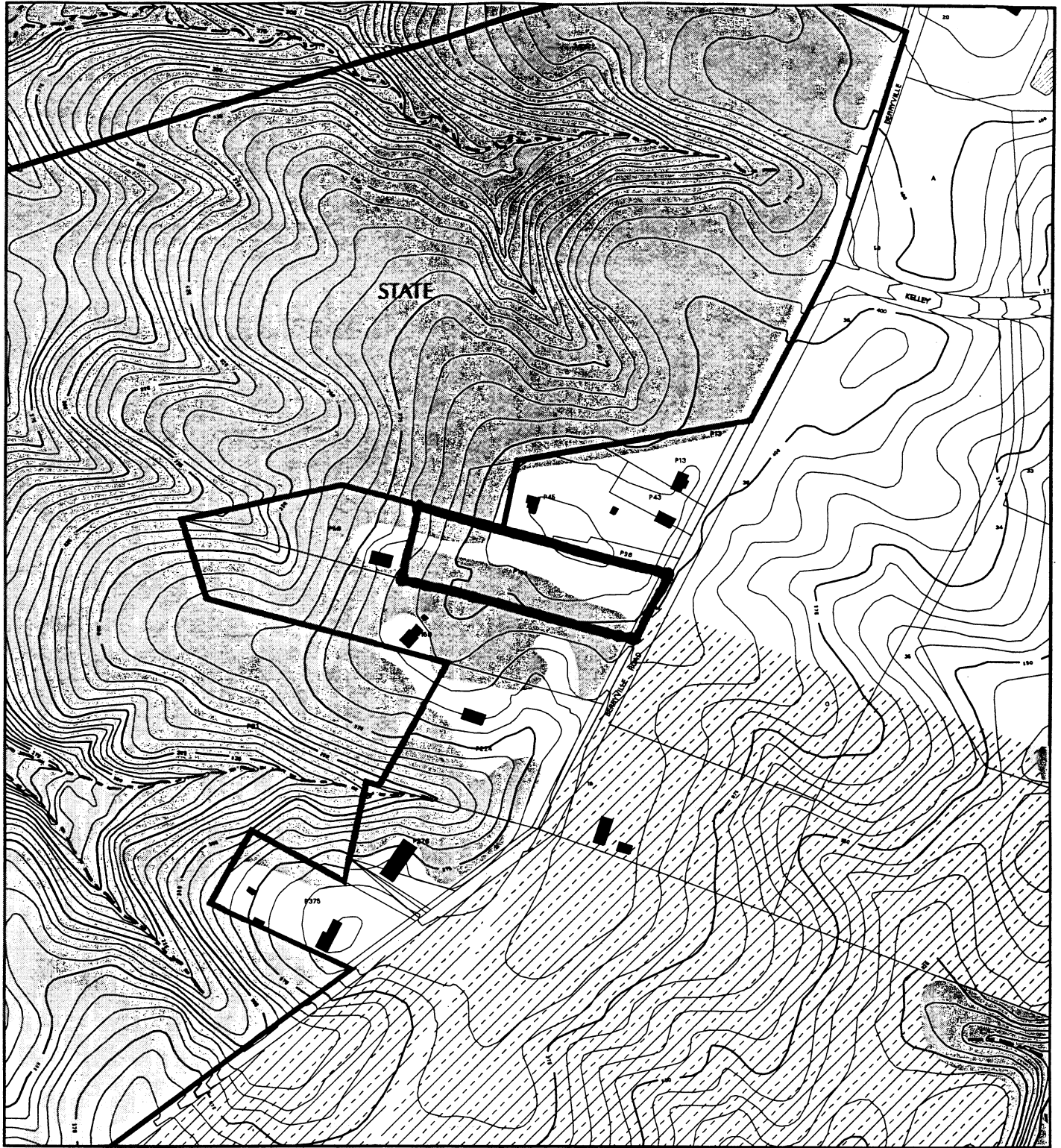
Agenda Item #05 - Preliminary Plan 1-03011
Pleasant Hills

Agenda Item #06 - Preliminary Plan 1-03000
Kensington Heights

Attachment

VICINITY MAP FOR

PLEASANT HILLS (1-03011)



Map compiled on September 24, 2002 at 10:50 AM | Site located on base sheet no - 220NW15

NOTICE

The planimetric, property, and topographic information shown on this map is based on copyrighted Map Products from the Montgomery County Department of Park and Planning of the Maryland-National Capital Park and Planning Commission, and may not be copied or reproduced without written permission from M-NCPPC.

Property lines are compiled by adjusting the property lines to topography created from aerial photography and should not be interpreted as actual field surveys. Planimetric features were compiled from 1:14400 scale aerial photography using stereo photogrammetric methods.

This map is created from a variety of data sources, and may not reflect the most current conditions in any one location and may not be completely accurate or up to date. All map features are approximately within five feet of their true location. This map may not be the same as a map of the same area plotted at an earlier time as the data is continuously updated. Use of this map, other than for general planning purposes is not recommended. - Copyright 1998

Key Map



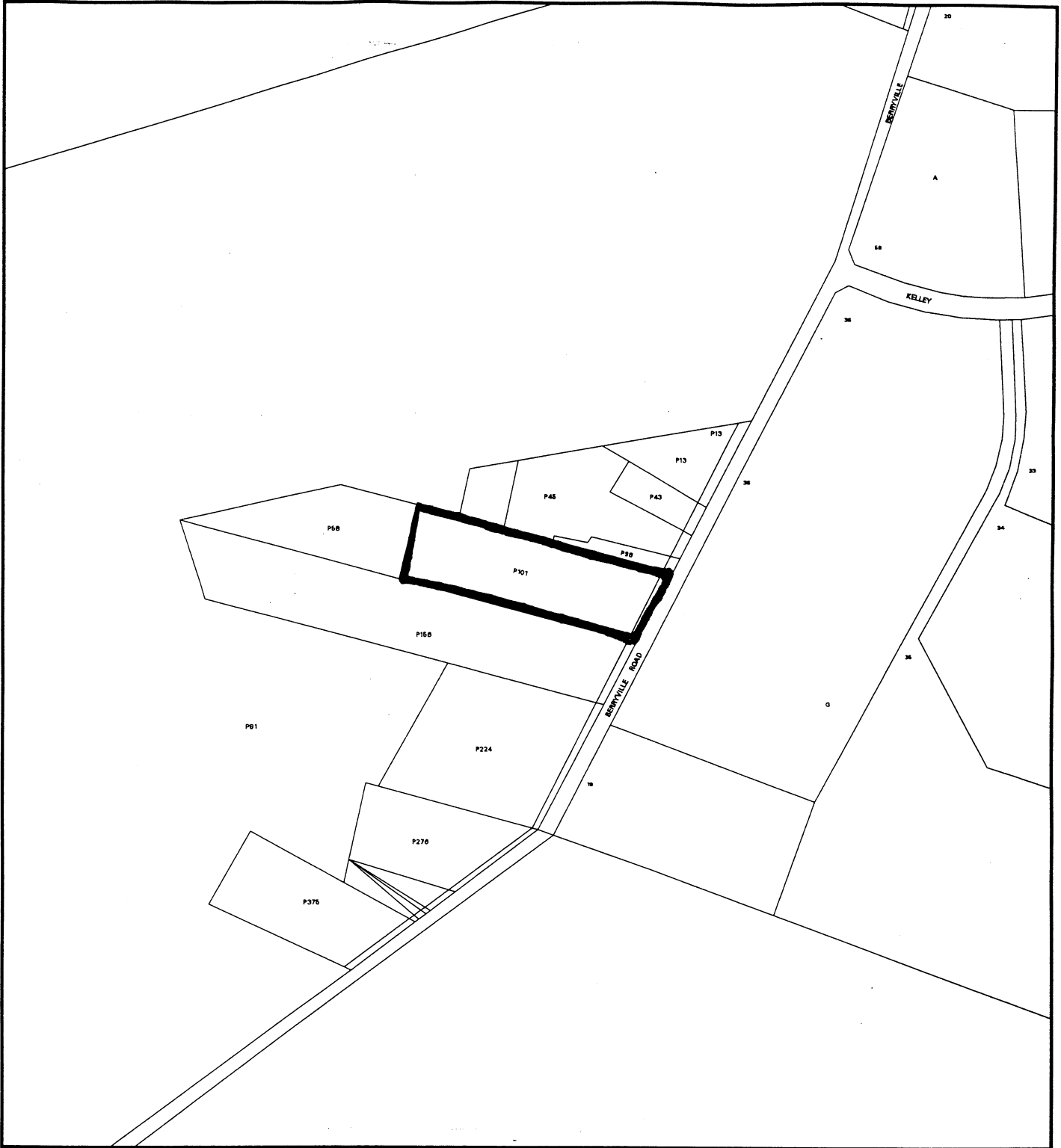
Research & Technology Center



1 : 4800

VICINITY MAP FOR

PLEASANT HILLS (1-03011)



Map compiled on September 24, 2002 at 9:48 AM | Site located on base sheet no - 220NW15

NOTICE

The planimetric, property, and topographic information shown on this map is based on copyrighted Map Products from the Montgomery County Department of Park and Planning of the Maryland-National Capital Park and Planning Commission, and may not be copied or reproduced without written permission from M-NCPPC.

Property lines are compiled by adjusting the property lines to topography created from aerial photography and should not be interpreted as actual field surveys. Planimetric features were compiled from 1:14400 scale aerial photography using stereo photogrammetric methods.

This map is created from a variety of data sources, and may not reflect the most current conditions in any one location and may not be completely accurate or up to date. All map features are approximately within five feet of their true location. This map may not be the same as a map of the same area plotted at an earlier time as the data is continuously updated. Use of this map, other than for general planning purposes is not recommended. - Copyright 1998

Key Map



Research & Technology Center



1 : 4800

