

Item # 9



THE MARYLAND-NATIONAL CAPITAL PARK AND PLANNING COMMISSION

**M E M O R A N D U M**

**DATE:** January 03, 2003  
**TO:** Montgomery County Planning Board  
**FROM:** A. Malcolm Shaneman  
Development Review Division  
(301) 495-4587  
**SUBJECT:** Informational Maps for Subdivision Items on the  
Planning Board's Agenda for January 09, 2003.

---

Attached are copies of plan drawings for Items #07, #08, #09, #10. These subdivision items are scheduled for Planning Board consideration on January 09, 2003. The items are further identified as follows:

Agenda Item #07 - Preliminary Plan 1-01030, Clarksburg  
Village & 1-93007, Nanna Property

Agenda Item #08 - Preliminary Plan 1-02119  
Potomac Crest

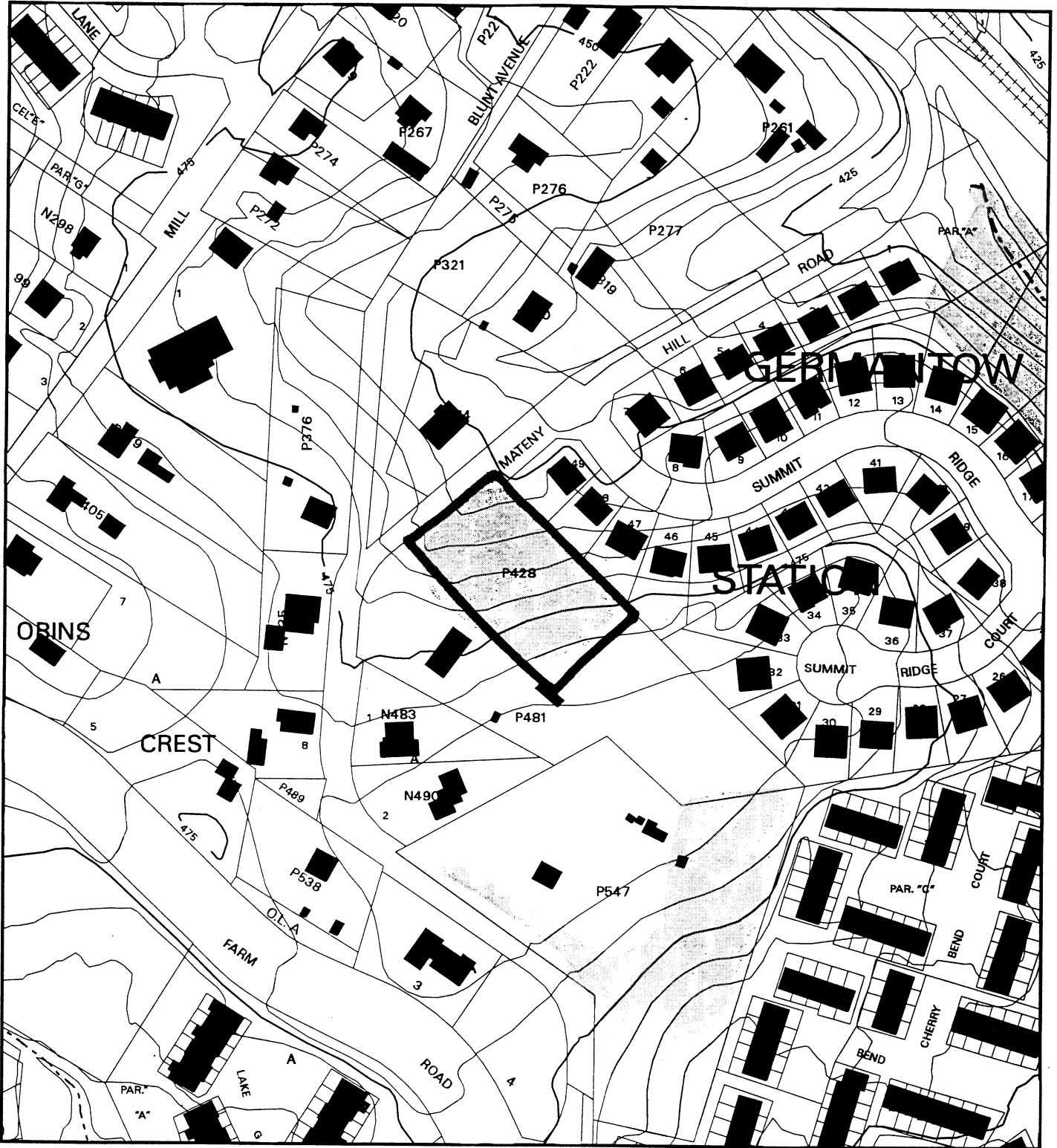
Agenda Item #09 - Preliminary Plan 1-03023  
Germantown Station

Agenda Item #10 - Preliminary Plan 1-02081  
Brooks Property

Attachment

VICINITY MAP FOR

# GERMANTOWN STATION (1-03023)



Map compiled on October 23, 2002 at 12:02 PM | Site located on base sheet no - 226NW13

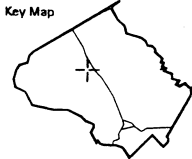
### NOTICE

The planimetric, property, and topographic information shown on this map is based on copyrighted Map Products from the Montgomery County Department of Park and Planning of the Maryland-National Capital Park and Planning Commission, and may not be copied or reproduced without written permission from M-NCPPC.

Property lines are compiled by adjusting the property lines to topography created from aerial photography and should not be interpreted as actual field surveys. Planimetric features were compiled from 1:14400 scale aerial photography using stereo photogrammetric methods.

This map is created from a variety of data sources, and may not reflect the most current conditions in any one location and may not be completely accurate or up to date. All map features are approximately within five feet of their true location. This map may not be the same as a map of the same area plotted at an earlier time as the data is continuously updated. Use of this map, other than for general planning purposes is not recommended. Copyright 1998

Key Map



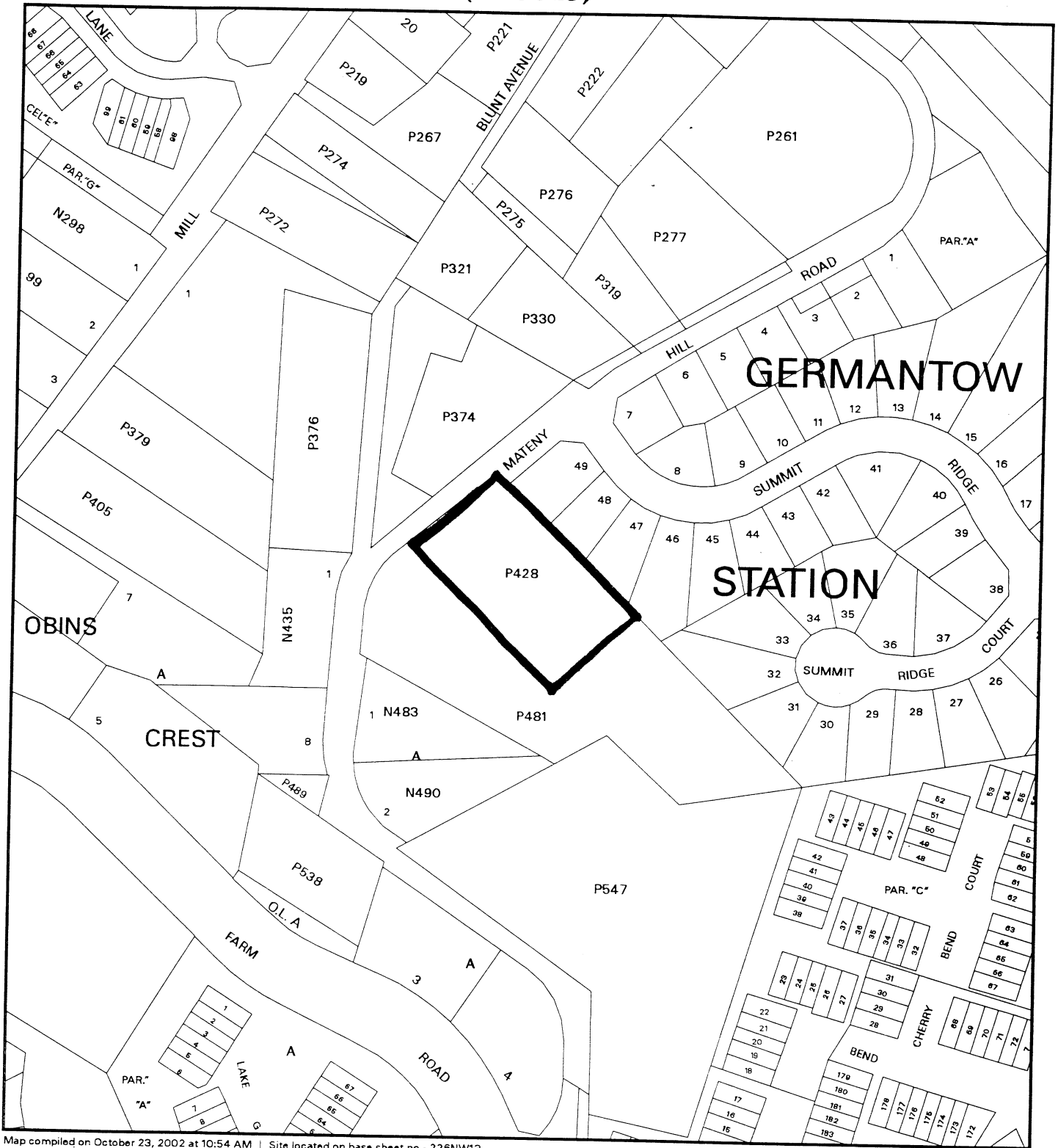
Research & Technology Center



1 : 2400

VICINITY MAP FOR

# GERMANTOWN STATION (1-03023)



Map compiled on October 23, 2002 at 10:54 AM | Site located on base sheet no - 226NW13

### NOTICE

The planimetric, property, and topographic information shown on this map is based on copyrighted Map Products from the Montgomery County Department of Park and Planning of the Maryland -National Capital Park and Planning Commission, and may not be copied or reproduced without written permission from M-NCPPC.

Property lines are compiled by adjusting the property lines to topography created from aerial photography and should not be interpreted as actual field surveys. Planimetric features were compiled from 1:14400 scale aerial photography using stereo photogrammetric methods.

This map is created from a variety of data sources, and may not reflect the most current conditions in any one location and may not be completely accurate or up to date. All map features are approximately within five feet of their true location. This map may not be the same as a map of the same area plotted at an earlier time as the data is continuously updated. Use of this map, other than for general planning purposes is not recommended. - Copyright 1998



