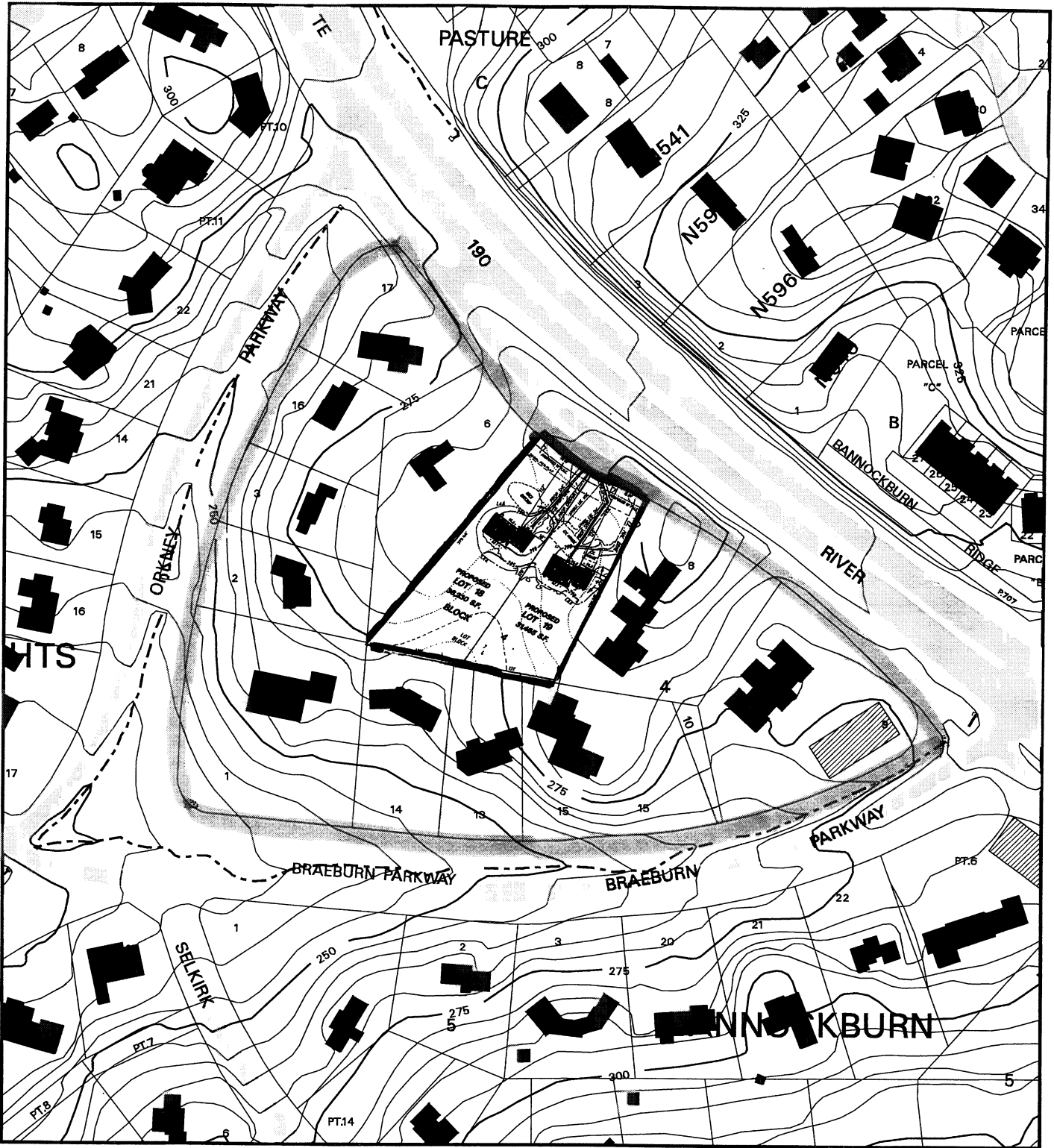


VICINITY MAP FOR

BANNOCKBURN HEIGHTS (1-03051)



Map compiled on January 28, 2003 at 2:30 PM | Site located on base sheet no - 209NW06

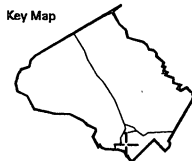
NOTICE

The planimetric, property, and topographic information shown on this map is based on copyrighted Map Products from the Montgomery County Department of Park and Planning of the Maryland-National Capital Park and Planning Commission, and may not be copied or reproduced without written permission from M-NCPPC.

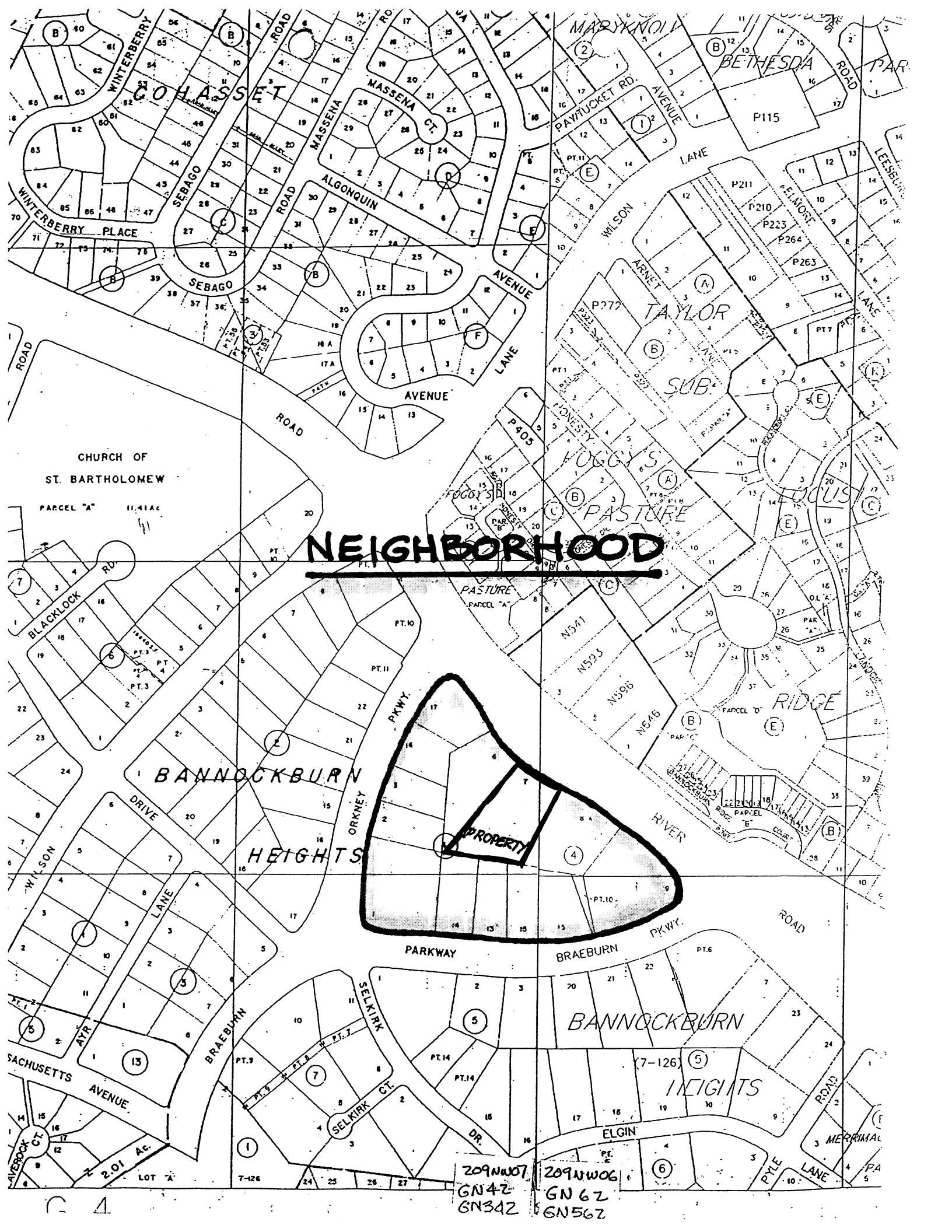
Property lines are compiled by adjusting the property lines to topography created from aerial photography and should not be interpreted as actual field surveys. Planimetric features were compiled from 1:14400 scale aerial photography using stereo photogrammetric methods.

This map is created from a variety of data sources, and may not reflect the most current conditions in any one location and may not be completely accurate or up to date. All map features are approximately within five feet of their true location. This map may not be the same as a map of the same area plotted at an earlier time as the data is continuously updated. Use of this map, other than for general planning purposes is not recommended. - Copyright 1998

Key Map



1 : 2400



NEIGHBORHOOD

209NW07 GN42 GN342
209NW06 GN62 GN562

G 4

**RESUBDIVISION LOT DATA COMPARISON TABLE
BANNOCKBURN HEIGHTS SUBDIVISION**

Lots Ranked by Size						
Lot & Blk	Frontage	Alignment		Shape	Width	
1, 4	225 275	perpendicular	39375	corner rectangular	220 270	69208
9, 4	243 270	perpendicular	35000	corner rectangular	235 260	63980
15, 4	275	perpendicular	33600	rectangular	260	53040
8, 4	224	perpendicular	28900	rectangular	210	49110
18, 4	91	perpendicular	21200	rectangular	105	36230
14, 4	125	perpendicular	20000	rectangular	120	31767
19, 4	86	perpendicular	19550	rectangular	110	31465
6, 4	135	perpendicular	18750	trapezoid	150	45044
13, 4	116	perpendicular	17100	rectangular	110	25658
2, 4	120	perpendicular	13500	rectangular	115	25589
17, 4	133 212	perpendicular	13000	corner rectangular	130 205	33871
16, 4	155	perpendicular	12000	trapezoid	150	25599
3, 4	120	perpendicular	11700	rectangular	115	23727

**Proposed
Lots**