

#3



THE MARYLAND-NATIONAL CAPITAL PARK AND PLANNING COMMISSION

M E M O R A N D U M

DATE: May 16, 2003
TO: Montgomery County Planning Board
FROM: A. Malcolm Shaneman
Development Review Division
(301) 495-4587
SUBJECT: Informational Maps for Subdivision Items on the
Planning Board's Agenda for May 22, 2003.

-

Attached are copies of plan drawings for Item #1, #03, #04, and #05. This subdivision item is scheduled for Planning Board consideration on May 22, 2003. The items are further identified as follows:

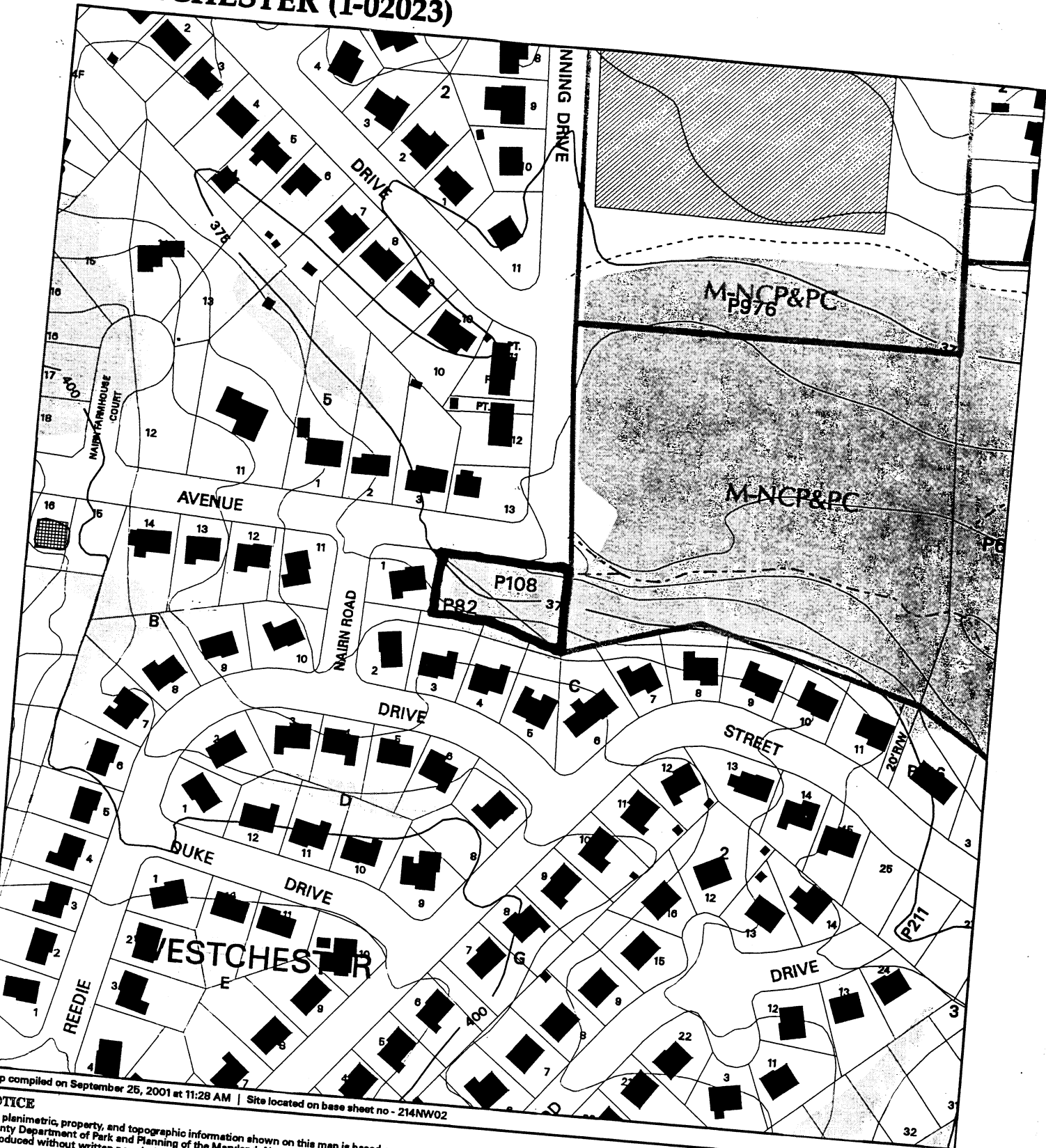
Agenda Item #01 - Preliminary Plan 1-03056
Wheaton Place

Agenda Item #03 - Preliminary Plan 1-02023
Westchester

Agenda Item #04 - Preliminary Plan 1-03068
Mountain View Estates

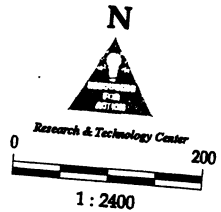
Agenda Item #05 - Preliminary Plan 1-03060
Silver Spring Park

VICINITY MAP FOR
WESTCHESTER (1-02023)



Map compiled on September 25, 2001 at 11:28 AM | Site located on base sheet no - 214NW02

NOTICE
 Planimetric, property, and topographic information shown on this map is based on copyrighted Map Products from the Montgomery County Department of Park and Planning of the Maryland-National Capital Park and Planning Commission, and may not be copied or reproduced without written permission from M-NCPPC.
 Property lines are compiled by adjusting the property lines to topography created from aerial photography and should not be interpreted as field surveys. Planimetric features were compiled from 1:144,000 scale aerial photography using stereo photogrammetric methods. This map is created from a variety of data sources, and may not reflect the most current conditions in any one location and may not be completely accurate or up to date. All map features are approximately within five feet of their true location. This map may not be used as a map of the same area plotted at an earlier time as the data is continuously updated. Use of this map, other than for general planning purposes is not recommended. - Copyright 1998



MONTGOMERY COUNTY DEPARTMENT OF PARK AND PLANNING
 THE MARYLAND-NATIONAL CAPITAL PARK AND PLANNING COMMISSION
 8787 Georgia Avenue - Silver Spring, Maryland 20910-3760

VICINITY MAP FOR
WESTCHESTER (1-02023)

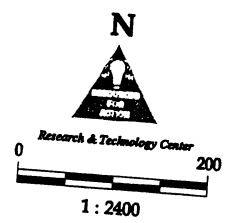


Map compiled on September 25, 2001 at 12:23 PM | Site located on base sheet no - 214NW02

NOTICE

This planimetric, property, and topographic information shown on this map is based on copyrighted Map Products from the Montgomery County Department of Park and Planning of the Maryland-National Capital Park and Planning Commission, and may not be copied or reproduced without written permission from M-NCPPC.

Property lines are compiled by adjusting the property lines to topography created from aerial photography and should not be interpreted as actual field surveys. Planimetric features were compiled from 1:14,400 scale aerial photography using stereo photogrammetric methods. This map is created from a variety of data sources, and may not reflect the most current conditions in any one location and may not be completely accurate or up to date. All map features are approximately within five feet of their true location. This map may not be the most current map of the same area plotted at an earlier time as the data is continuously updated. Use of this map, other than for general planning purposes is not recommended. - Copyright 1998



MONTGOMERY COUNTY DEPARTMENT OF PARK AND PLANNING
 THE MARYLAND-NATIONAL CAPITAL PARK AND PLANNING COMMISSION
 8787 Georgia Avenue - Silver Spring, Maryland 20910-3760

