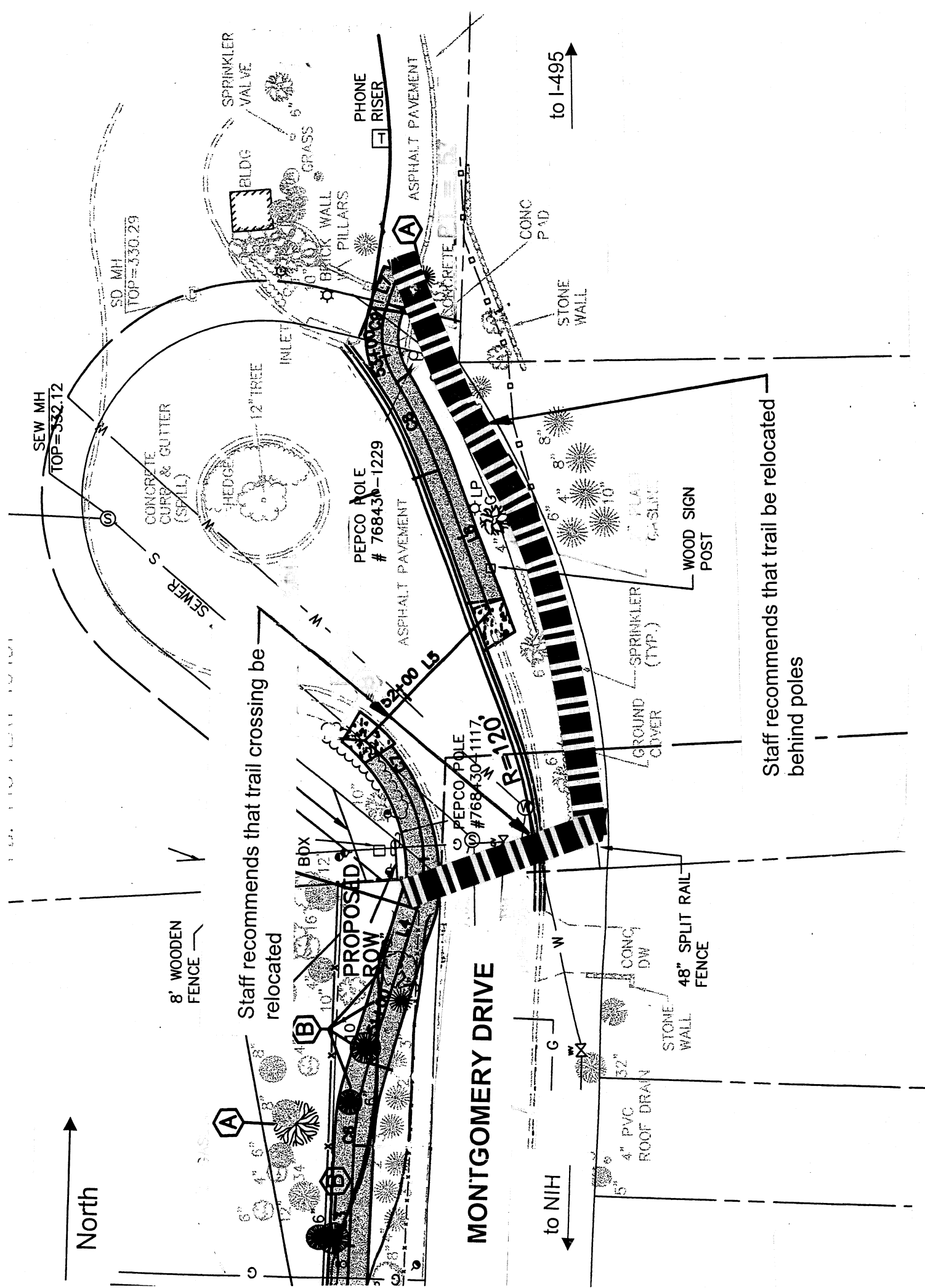
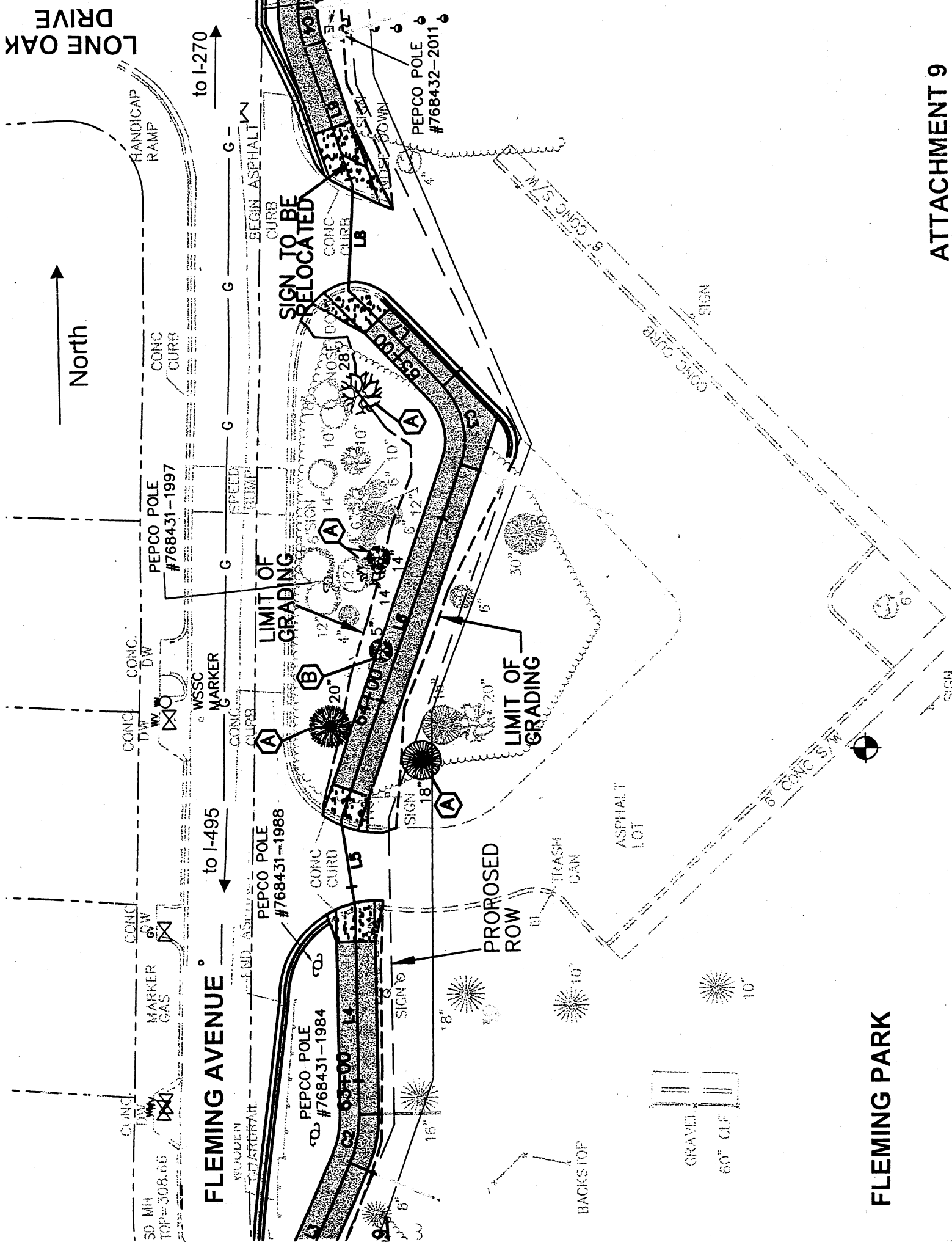


**Proposed Typical Section
at the French Int'l School**



FLEMING AVENUE

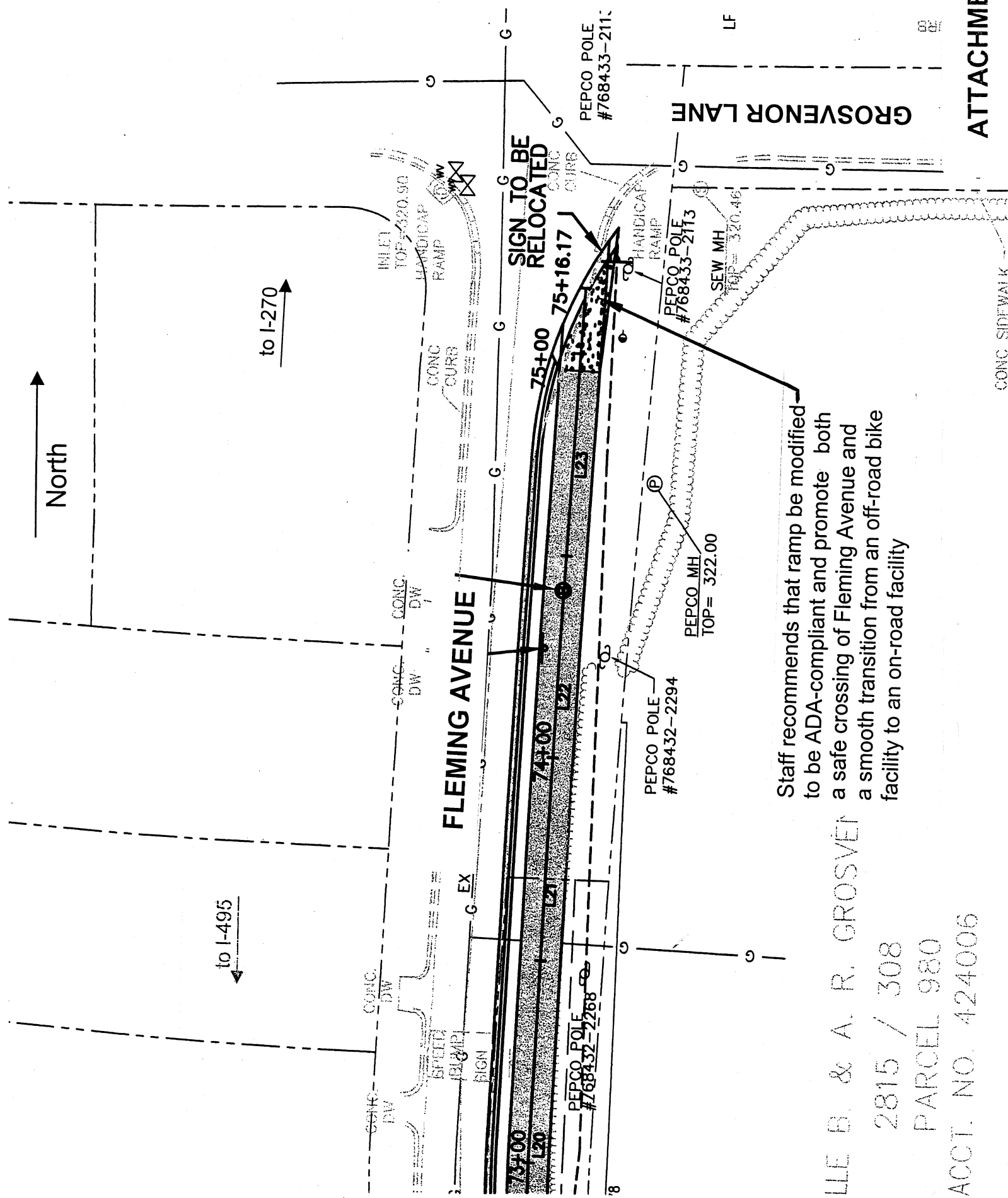


LONE OAK DRIVE

North

to I-270

to I-495



Staff recommends that ramp be modified to be ADA-compliant and promote both a safe crossing of Fleming Avenue and a smooth transition from an off-road bike facility to an on-road facility

LLE B. & A. R. GROSVEN
 2815 / 308
 PARCEL 980
 ACCT. NO. 424006

To Montrose and Randolph Roads

To Marinelli Road

North

ROCKVILLE PIKE (MD 355)

