



THE MARYLAND-NATIONAL CAPITAL PARK AND PLANNING COMMISSION

Item #12

M E M O R A N D U M

DATE: September 22, 2003
TO: Montgomery County Planning Board
FROM: A. Malcolm Shaneman
Development Review Division
(301) 495-4587
SUBJECT: Informational Maps for Subdivision Items on the
Planning Board's Agenda for September 26, 2003.

-

Attached are copies of plan drawings for Item #12, #13, #14, #15, #16 and #18. These subdivision items are scheduled for Planning Board consideration on September 26, 2003. The items are further identified as follows:

Agenda Item #12 - Preliminary Plan 1-03088
Verizon Clarksburg Comm. Center

Agenda Item #13 - Preliminary Plan 1-03094
Glen Echo Heights

Agenda Item #14 - Preliminary Plan 1-03083
Barnsley's Addition to Olney

Agenda Item #15 - Preliminary Plan 1-03077
Snowden's Mill

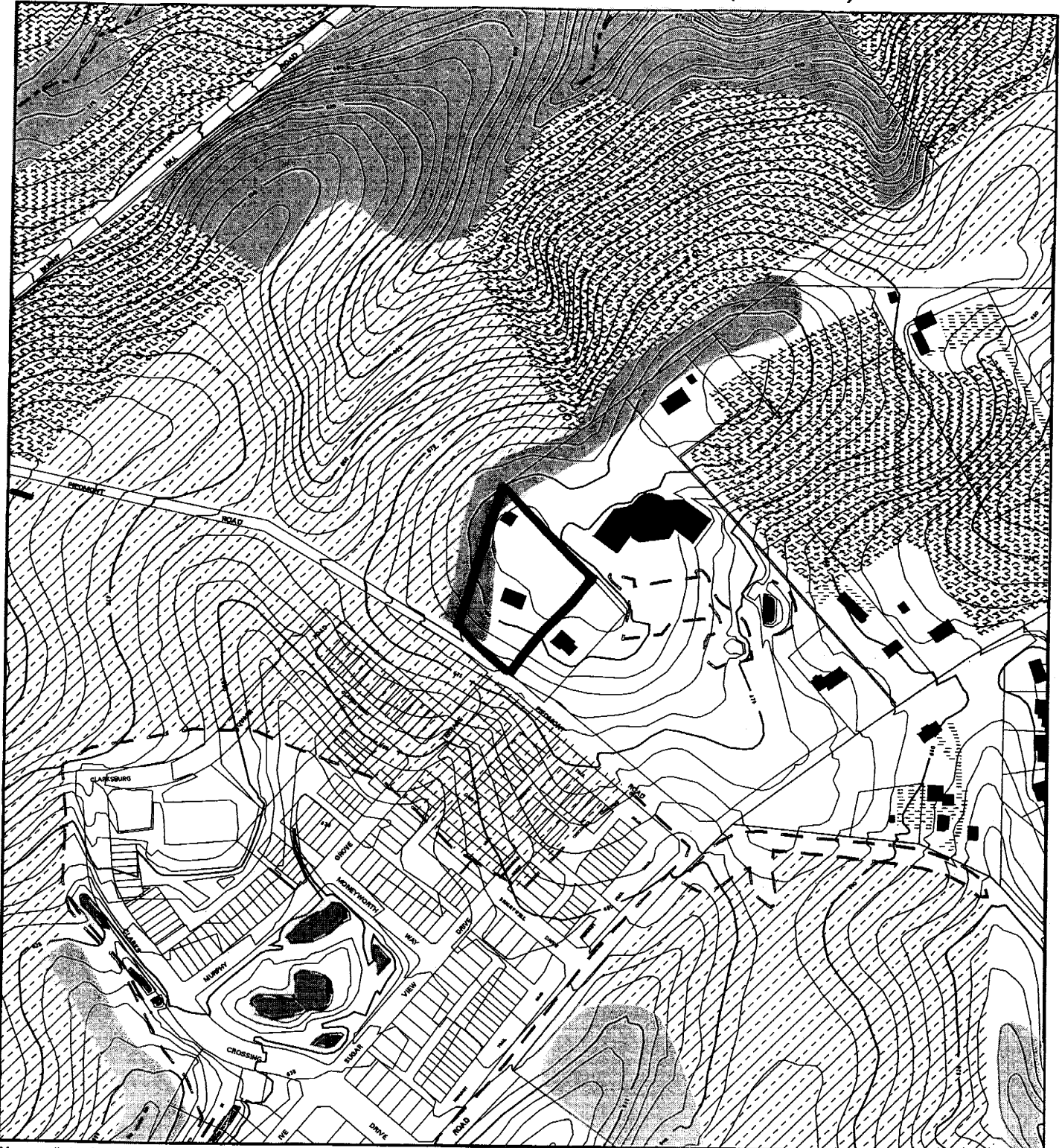
Agenda Item #16 - Preliminary Plan 1-00040
Resurrection Baptist Church

Agenda Item #18 - Subdivision Regulation Waiver SRW-04002
United Therapeutics

Attachment

VICINITY MAP FOR

VERIZON CLARKSBURG COMM. CENTER (1-03088)



Map compiled on May 22, 2003 at 1:16 PM | Site located on base sheet no - 233NW13

NOTICE

The planimetric, property, and topographic information shown on this map is based on copyrighted Map Products from the Montgomery County Department of Park and Planning of the Maryland-National Capital Park and Planning Commission, and may not be copied or reproduced without written permission from M-NCPPC.

Property lines are compiled by adjusting the property lines to topography created from aerial photography and should not be interpreted as actual field surveys. Planimetric features were compiled from 1:14400 scale aerial photography using stereo photogrammetric methods.

This map is created from a variety of data sources, and may not reflect the most current conditions in any one location and may not be completely accurate or up to date. All map features are approximately within five feet of their true location. This map may not be the same as a map of the same area plotted at an earlier time as the data is continuously updated. Use of this map, other than for general planning purposes is not recommended. - Copyright 1998

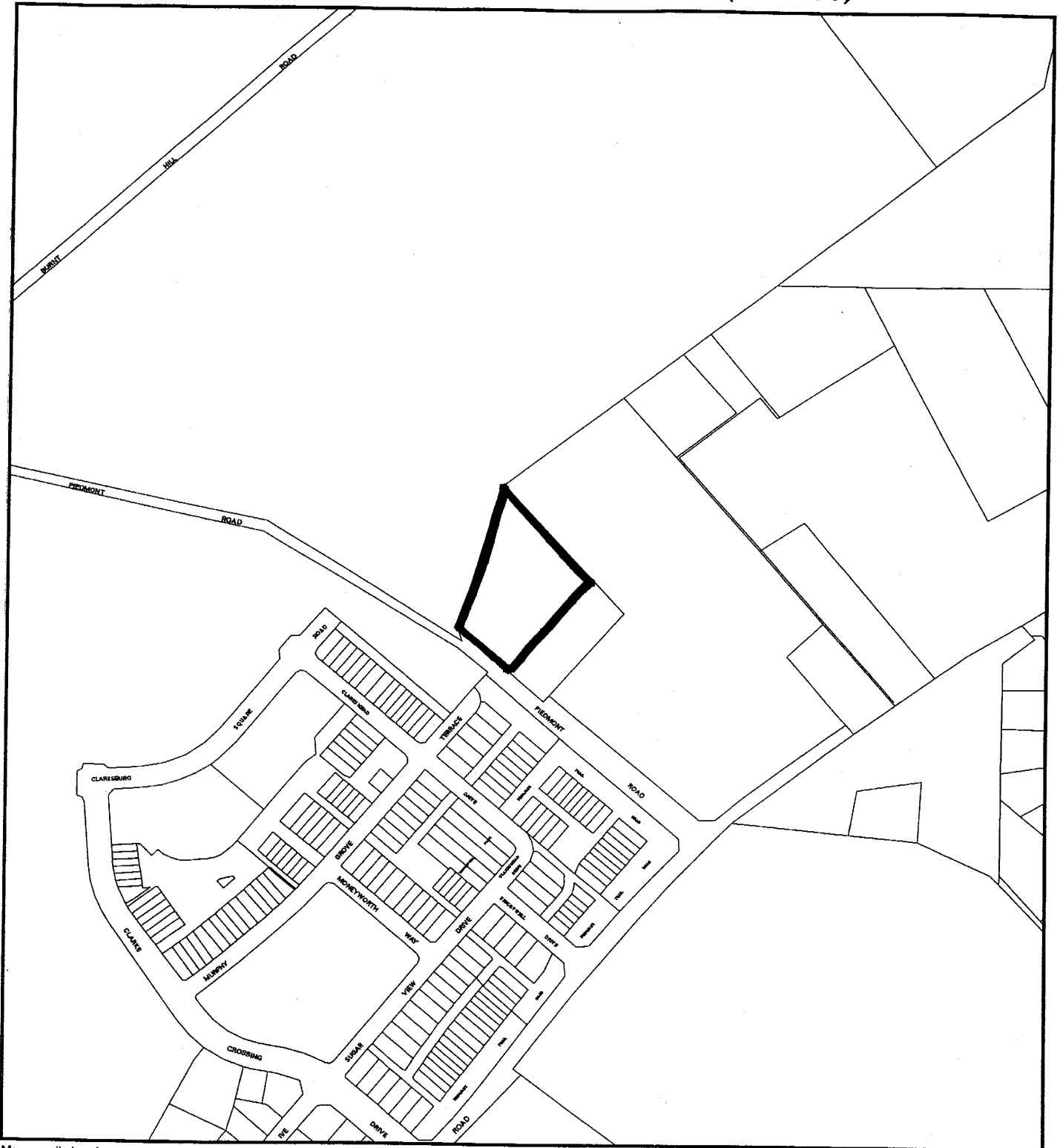
Key Map



1 : 4800

VICINITY MAP FOR

VERIZON CLARKSBURG COMM. CENTER (1-03088)



Map compiled on January 22, 2000 at 9:24 AM | Site located on base sheet no - 233NW13

NOTICE

The planimetric, property, and topographic information shown on this map is based on copyrighted Map Products from the Montgomery County Department of Park and Planning of the Maryland -National Capital Park and Planning Commission, and may not be copied or reproduced without written permission from M-NCPPC.

Property lines are compiled by adjusting the property lines to topography created from aerial photography and should not be interpreted as actual field surveys. Planimetric features were compiled from 1:14400 scale aerial photography using stereo photogrammetric methods.

This map is created from a variety of data sources, and may not reflect the most current conditions in any one location and may not be completely accurate or up to date. All map features are approximately within five feet of their true location. This map may not be the same as a map of the same area plotted at an earlier time as the data is continuously updated. Use of this map, other than for general planning purposes is not recommended. - Copyright 1998

