

RE-2

R-200

RE-2

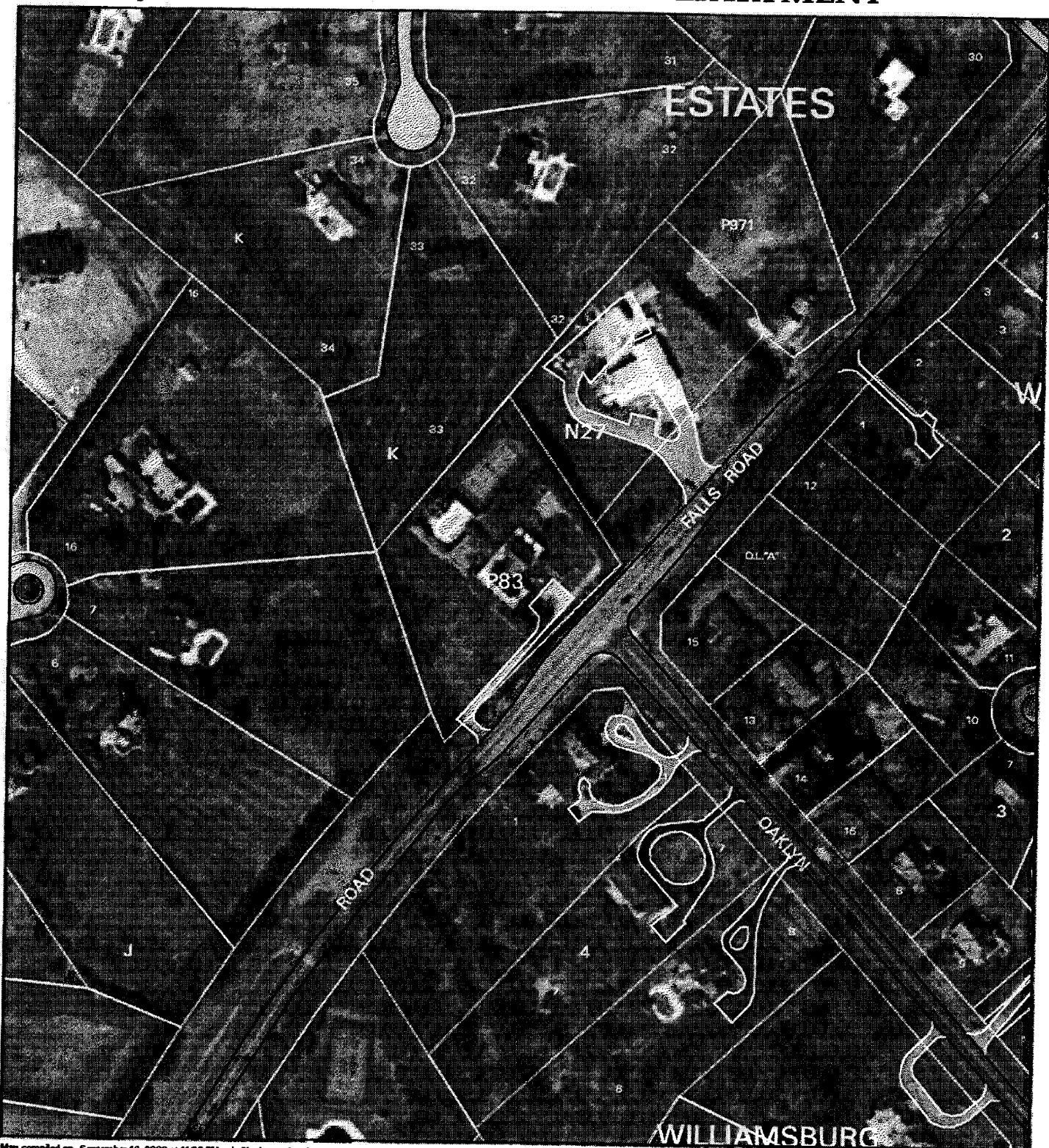
R-200

CABIN JOHN PARK
V.F.D.

ATTACHMENT 2

VICINITY MAP FOR

CABIN JOHN PARK VOLUNTEER FIRE DEPARTMENT



Map compiled on September 16, 2000 at 11:38 PM | Site located on base sheet no- 211NW11 | Date of Orthophotos - March 1998 | Orthophoto Images Licensed from WARGIS LLC.

NOTICE

The planimetric, property, and topographic information shown on this map is based on copyrighted Map Products from the Montgomery County Department of Park and Planning of the Maryland-National Capital Park and Planning Commission, and may not be copied or reproduced without written permission from M-NCPPC.

Property lines are compiled by adjusting the property lines to topography created from aerial photography and should not be interpreted as actual field surveys. Planimetric features were compiled from 1:14400 scale aerial photography using stereo photogrammetric methods.

This map is created from a variety of data sources, and may not reflect the most current conditions in any one location and may not be completely accurate or up to date. All map features are approximately within five feet of their true location. This map may not be the same as a map of the same area plotted at an earlier time as the data is continuously updated. Use of this map, other than for general planning purposes is not recommended. - Copyright 1998



1 : 2400



REVISIONS: 11/11 MONTEREY PALMS PLANT
 SHEET 11A
 10/11/11
 10/11/11
 10/11/11
 10/11/11

CIVIL/STRUCTURAL
 ENGINEER
 BURRESS & WITTE
 170 ROLLINS AVE
 ROCKVILLE, MD 20852
 301-946-8800

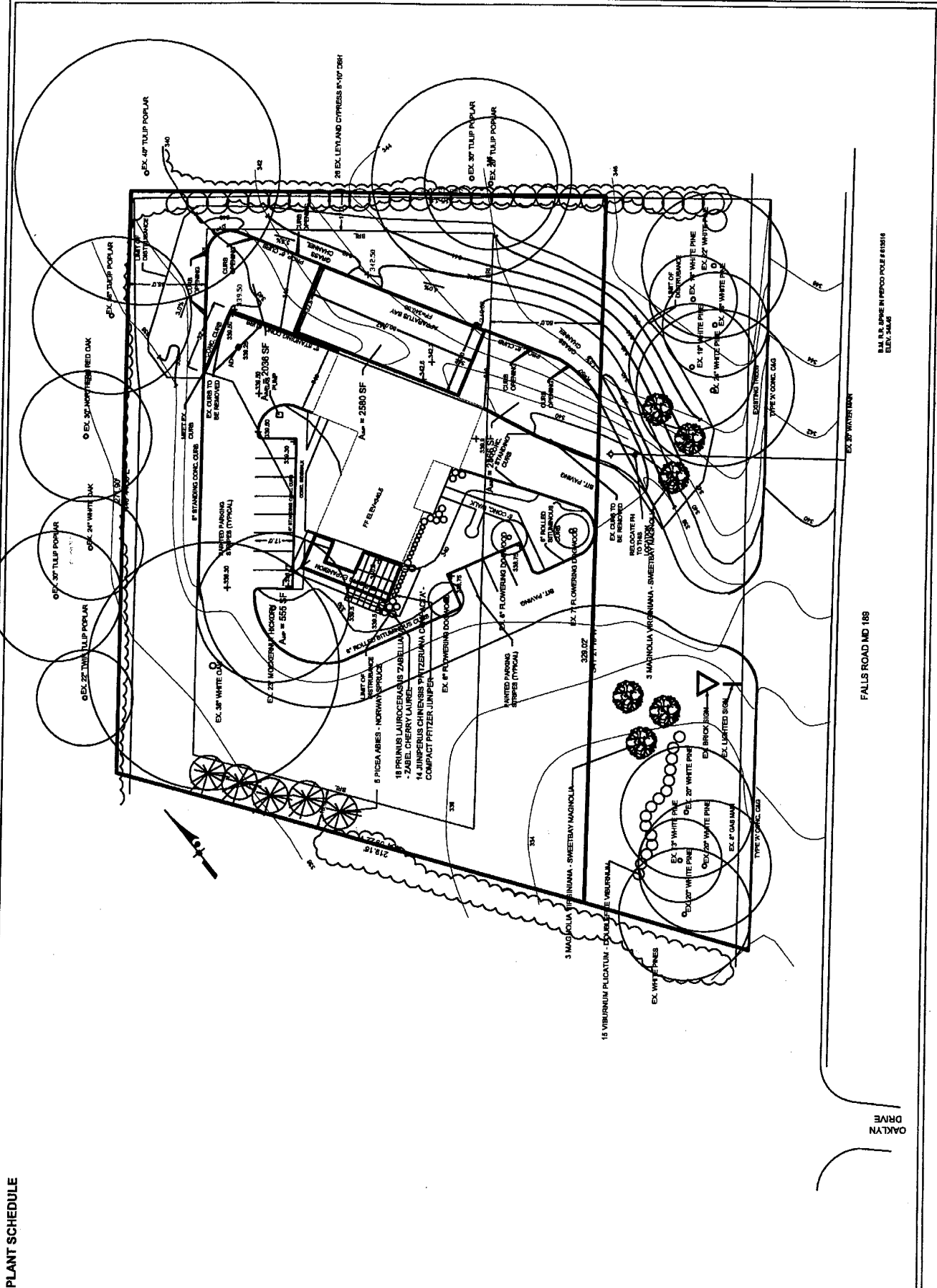
CABIN JOHN
 VOLUNTEER
 FIRE
 STATION #30

MONTGOMERY COUNTY,
 MARYLAND

CABIN JOHN FIRE
 VOLUNTEER
 DEPARTMENT
 9404 FALLS ROAD
 BETHESDA, MARYLAND
**LANDSCAPE,
 LIGHTING &
 TREE
 PROTECTION PLAN**

DATE: SEPTEMBER 2003 BY: DR
 SCALE: 1" = 20'

SHEET: 1 OF 3



PLANT SCHEDULE

FALLS ROAD MD 189

EXIST. 18" WHITE PINE IN REPOD POLE #15118
 EX. 18" W.P.

OAKLYN DRIVE

