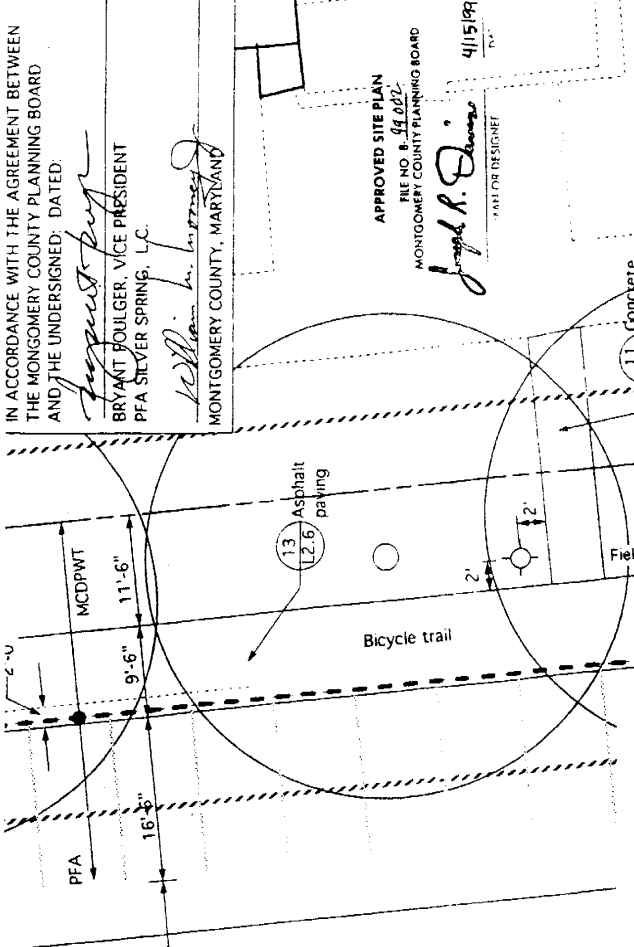
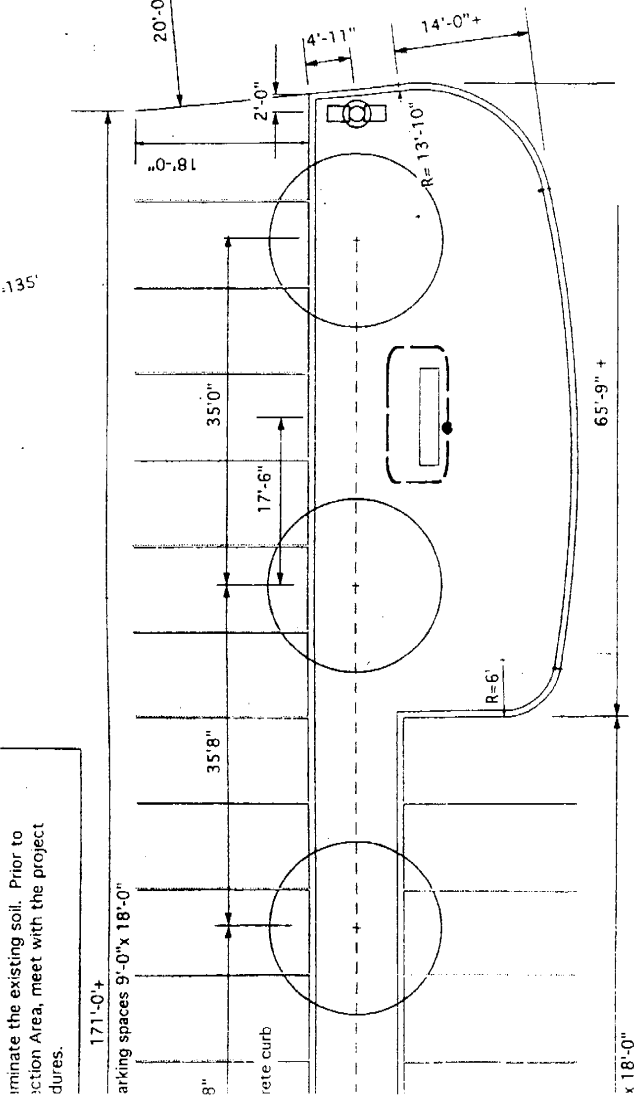


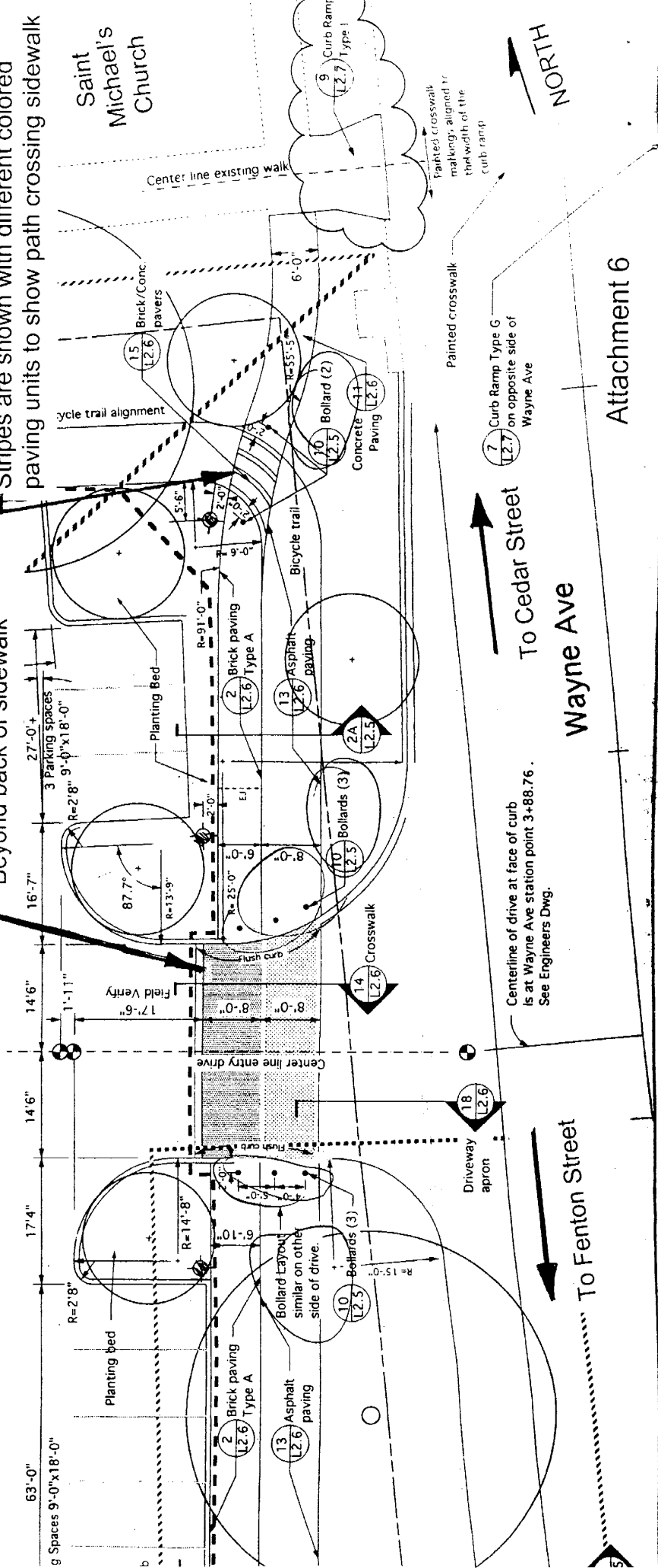
Imitate the existing soil. Prior to construction Area, meet with the project defines.



Whole Foods Parking Lot

Brick paving extends three feet Beyond back of sidewalk

Stripes are shown with different colored paving units to show path crossing sidewalk

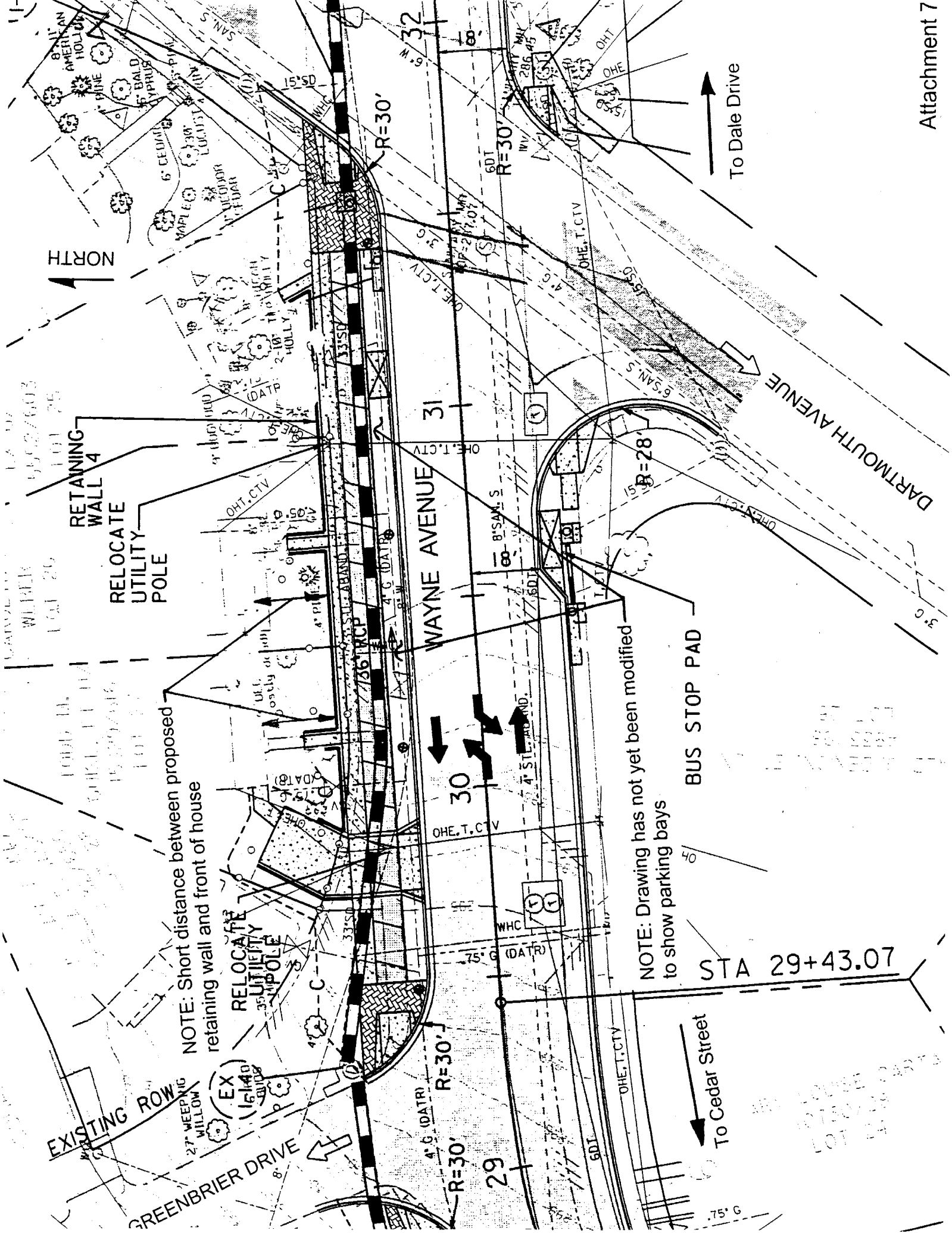


IN ACCORDANCE WITH THE AGREEMENT BETWEEN THE MONTGOMERY COUNTY PLANNING BOARD AND THE UNDERSIGNED, DATED:

Joseph R. Deane
 BRYANT BOULGER, VICE PRESIDENT
 PFA SILVER SPRING, LLC.
William L. ...
 MONTGOMERY COUNTY, MARYLAND

APPROVED SITE PLAN
 FILE NO. B-14-022
 MONTGOMERY COUNTY PLANNING BOARD
Joseph R. Deane
 PLANNING DESIGNER
 4/15/99

Attachment 6

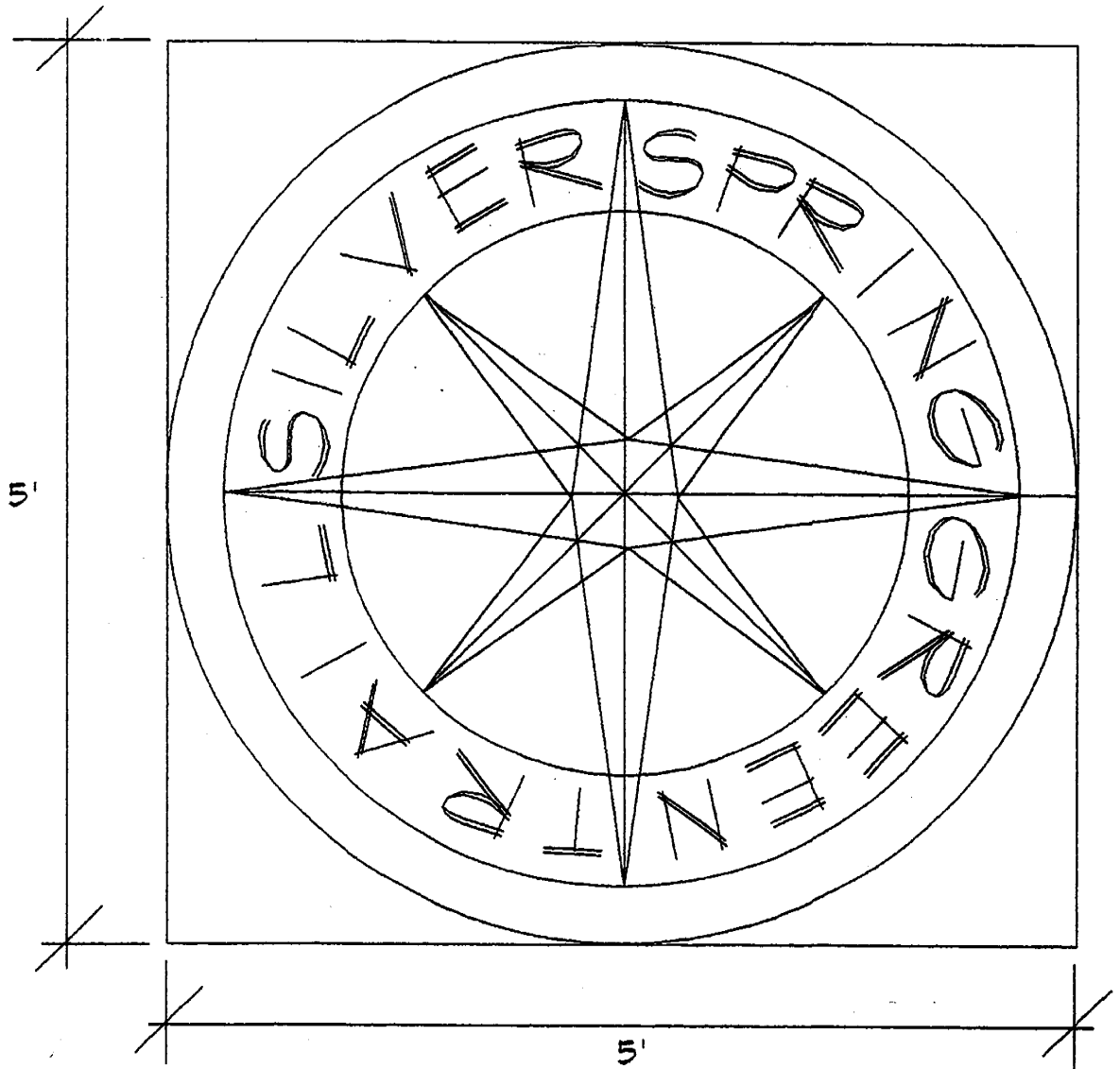


WILBER
 101 29
 101 25
 101 27
 101 28
 101 26
 101 24
 101 23
 101 22
 101 21
 101 20
 101 19
 101 18
 101 17
 101 16
 101 15
 101 14
 101 13
 101 12
 101 11
 101 10
 101 9
 101 8
 101 7
 101 6
 101 5
 101 4
 101 3
 101 2
 101 1

NOTE: Short distance between proposed retaining wall and front of house

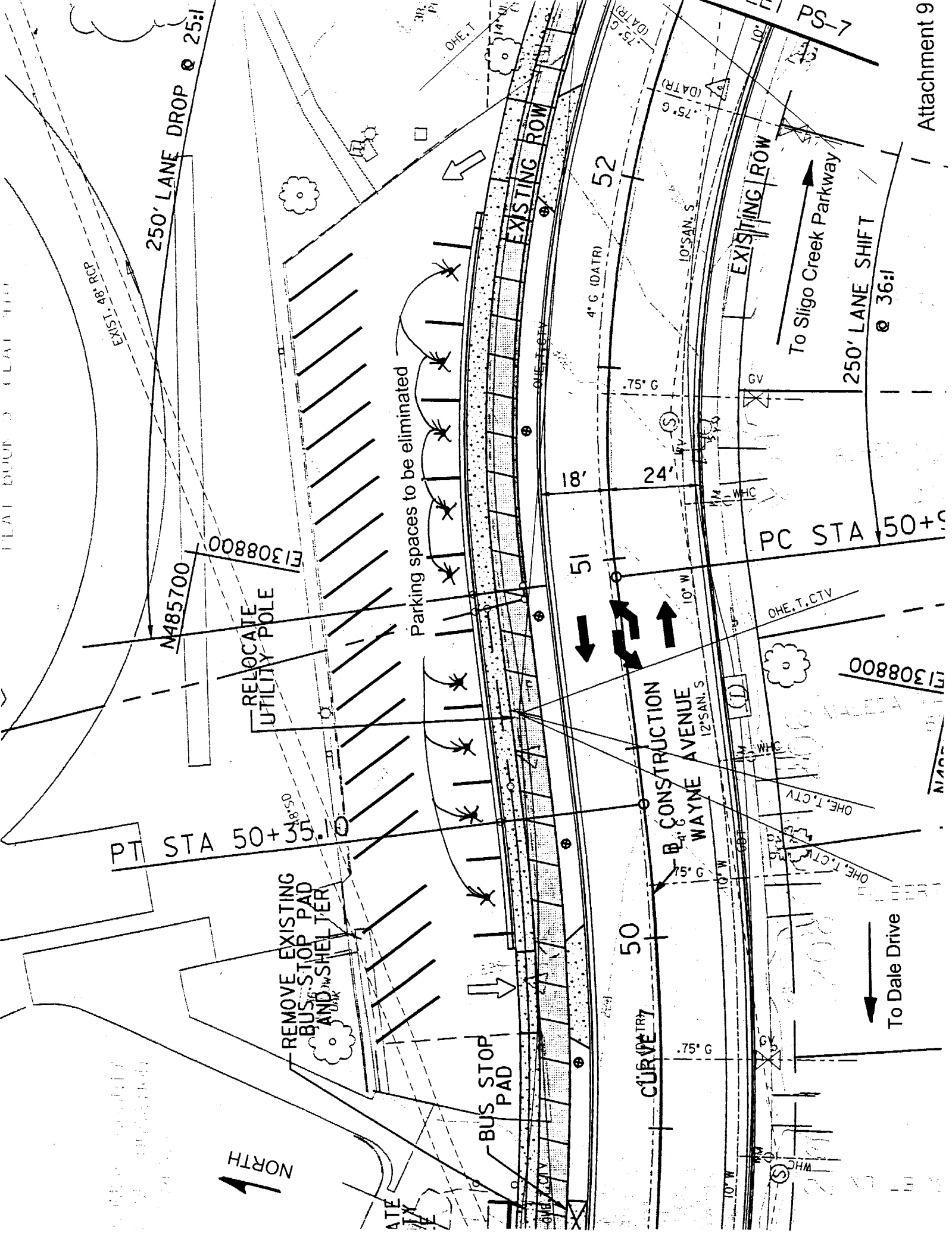
NOTE: Drawing has not yet been modified to show parking bays

STA 29+43.07



4

SILVER SPRING GREEN TRAIL MEDALLION
N.T.S.





SLIGO CREEK PARK

PC STA 55+37.29

SEE NOTE 1

R=30'

Attachment 10

Retaining wall required to eliminate fill in flood plain

SLIGO CREEK

BRIDGE REHAB/WIDENING BY OTHERS

BRIDGE NO. 162 WAYNE AVENUE

To Sligo Creek Parkway

36" POPLAR

4" DECIDUOUS

4" DECIDUOUS

4" DECIDUOUS

4" DECIDUOUS

4" DECIDUOUS

4" DECIDUOUS

55'

10'

10'

60T

EX (ES-2)

RELOCATE UTILITY POLE

RELOCATE UTILITY POLE



EX (I-32)

36'SAN

25', 29" TULIP POPLAR

16" POPLAR

16" POPLAR

24" TULIP POPLAR

21.5" TULIP POPLAR

21.5" TULIP POPLAR

21.5" TULIP POPLAR

21.5" TULIP POPLAR

21.5" TULIP POPLAR

21.5" TULIP POPLAR

21.5" TULIP POPLAR

21.5" TULIP POPLAR

21.5" TULIP POPLAR

21.5" TULIP POPLAR

21.5" TULIP POPLAR

21.5" TULIP POPLAR

21.5" TULIP POPLAR

21.5" TULIP POPLAR

21.5" TULIP POPLAR

21.5" TULIP POPLAR

21.5" TULIP POPLAR

21.5" TULIP POPLAR

21.5" TULIP POPLAR

21.5" TULIP POPLAR

21.5" TULIP POPLAR

21.5" TULIP POPLAR

21.5" TULIP POPLAR

21.5" TULIP POPLAR

21.5" TULIP POPLAR

21.5" TULIP POPLAR

21.5" TULIP POPLAR

21.5" TULIP POPLAR

21.5" TULIP POPLAR

21.5" TULIP POPLAR

WAB5700

001602

250' LANE DROP @ 25:1

17.5' P

4" DOGWOOD

8" DOGWOOD

33.5" TULIP POPLAR

2-15' PINE

2-15' PINE

2-15' PINE

2-15' PINE

2-15' PINE

2-15' PINE

2-15' PINE

2-15' PINE

2-15' PINE

2-15' PINE

2-15' PINE

2-15' PINE

2-15' PINE

RELOCATE UTILITY POLE

RELOCATE UTILITY POLE

EXISTING ROW

250' LANE SHIFT @ 36:1

250' LANE SHIFT @ 36:1

Handwritten notes and stamps

PT STA 53+

To Dale Drive

B. CONSTRUCTION WAYNE AVENUE

I-15

Asphalt trail to be increased to ten feet wide

Sidewalk to be eliminated

Landscape panel to be reduced to save 33.5-inch tulip poplar