

Item # 5



THE MARYLAND-NATIONAL CAPITAL PARK AND PLANNING COMMISSION
Office of the Chairman, Montgomery County Planning Board

M E M O R A N D U M

DATE: October 24, 2003
TO: Montgomery County Planning Board
FROM: A. Malcolm Shaneman
Development Review Division
(301) 495-4587
SUBJECT: Informational Maps for Subdivision Items on the
Planning Board's Agenda for October 30, 2003.

Attached are copies of plan drawings for Item #05, #06, and #07. These subdivision items are scheduled for Planning Board consideration on October 30, 2003. The items are further identified as follows:

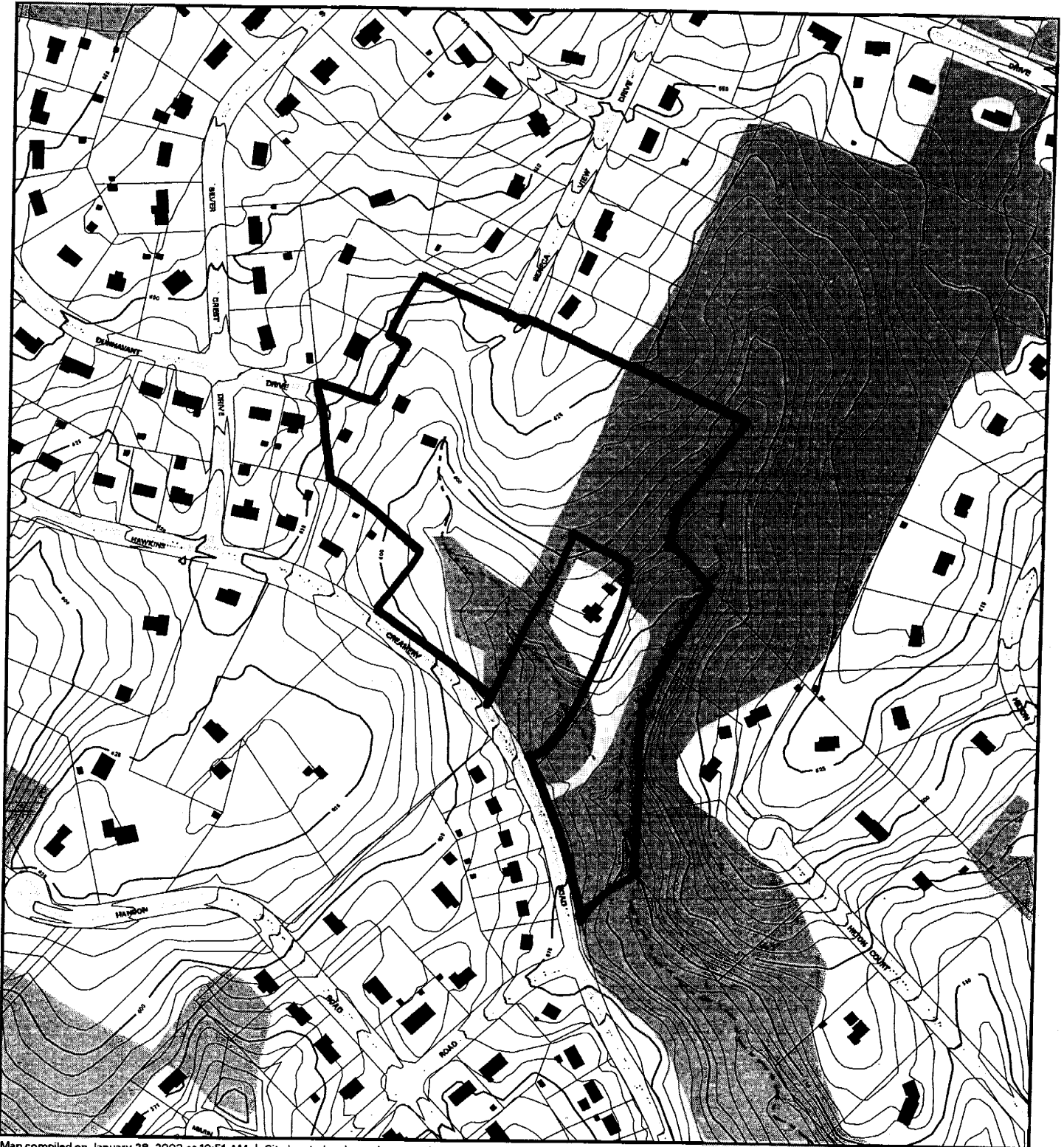
Agenda Item #05 -Preliminary Plan 1-03053
Silver Crest

Agenda Item #06 -Pre-Preliminary Plan 7-04008
Chevy Chase, Section 5C

Agenda Item #07 -Pre-Preliminary Plan 7-04007
Riding Stable Estate

Attachment

VICINITY MAP FOR
SILVER CREST (1-03053)



Map compiled on January 28, 2003 at 10:51 AM | Site located on base sheet no - 234NW08

NOTICE

The planimetric, property, and topographic information shown on this map is based on copyrighted Map Products from the Montgomery County Department of Park and Planning of the Maryland -National Capital Park and Planning Commission, and may not be copied or reproduced without written permission from M-NCPPC.

Property lines are compiled by adjusting the property lines to topography created from aerial photography using stereo photogrammetric methods. Planimetric features were compiled from 1:14400 scale aerial photography and should not be interpreted as actual field surveys.

This map is created from a variety of data sources, and may not reflect the most current conditions in any one location and may not be completely accurate or up to date. All map features are approximately within five feet of their true location. This map may not be the same as a map of the same area plotted at an earlier time as the data is continuously updated. Use of this map, other than for general planning purposes is not recommended. - Copyright 1998

Key Map

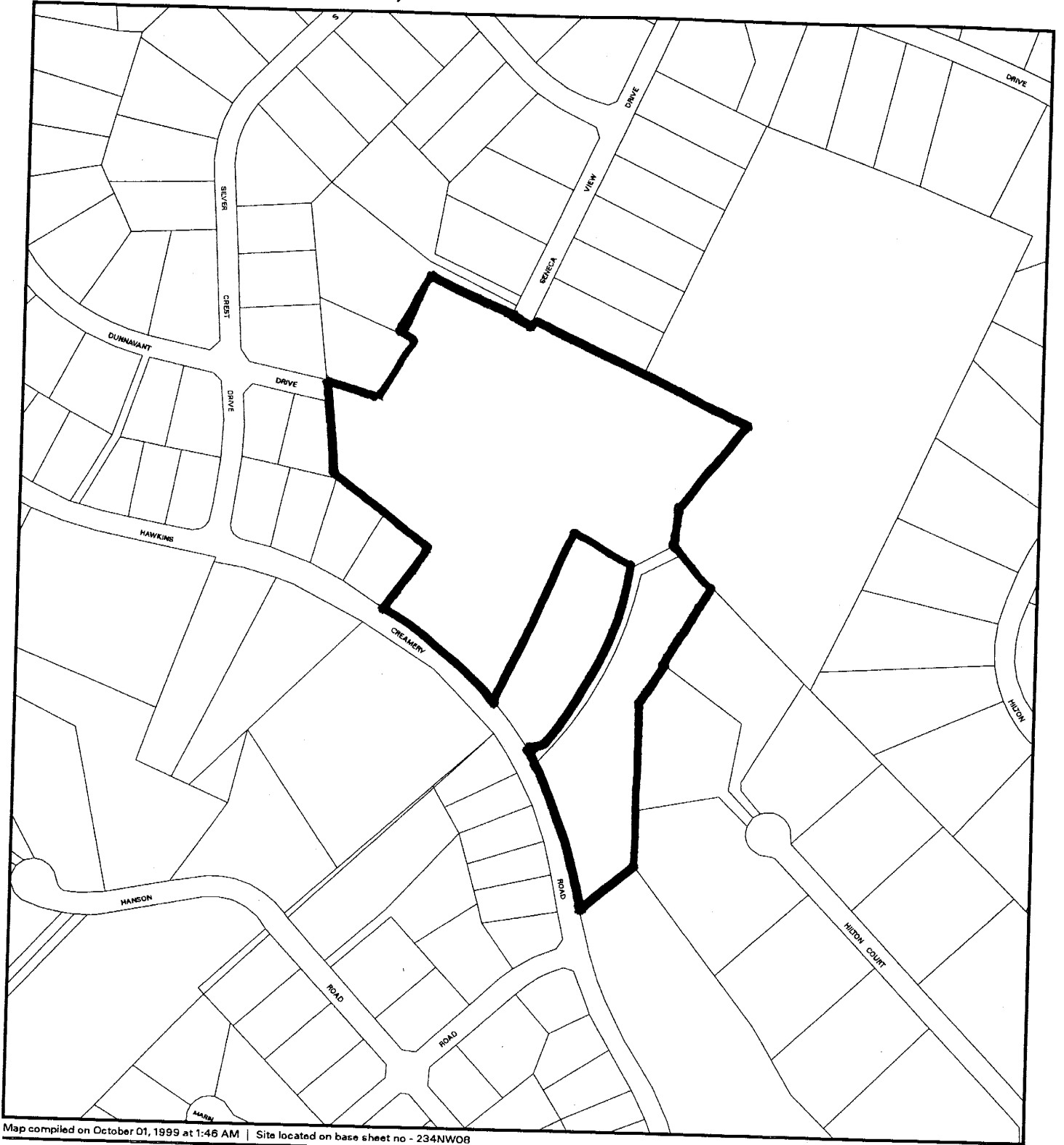


Research & Technology Center



1 : 4800

VICINITY MAP FOR
SILVER CREST (1-03053)



Map compiled on October 01, 1999 at 1:46 AM | Site located on base sheet no - 234NW08

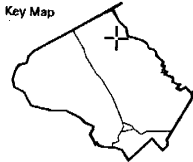
NOTICE

The planimetric, property, and topographic information shown on this map is based on copyrighted Map Products from the Montgomery County Department of Park and Planning of the Maryland -National Capital Park and Planning Commission, and may not be copied or reproduced without written permission from M-NCPPC.

Property lines are compiled by adjusting the property lines to topography created from aerial photography and should not be interpreted as actual field surveys. Planimetric features were compiled from 1:14400 scale aerial photography using stereo photogrammetric methods.

This map is created from a variety of data sources, and may not reflect the most current conditions in any one location and may not be completely accurate or up to date. All map features are approximately within five feet of their true location. This map may not be the same as a map of the same area plotted at an earlier time as the data is continuously updated. Use of this map, other than for general planning purposes is not recommended. - Copyright 1998

Key Map



1 : 4800

