

Item #6



THE MARYLAND-NATIONAL CAPITAL PARK AND PLANNING COMMISSION
Office of the Chairman, Montgomery County Planning Board

M E M O R A N D U M

DATE: October 24, 2003
TO: Montgomery County Planning Board
FROM: A. Malcolm Shaneman
Development Review Division
(301) 495-4587
SUBJECT: Informational Maps for Subdivision Items on the
Planning Board's Agenda for October 30, 2003.

Attached are copies of plan drawings for Item #05, #06, and #07. These subdivision items are scheduled for Planning Board consideration on October 30, 2003. The items are further identified as follows:

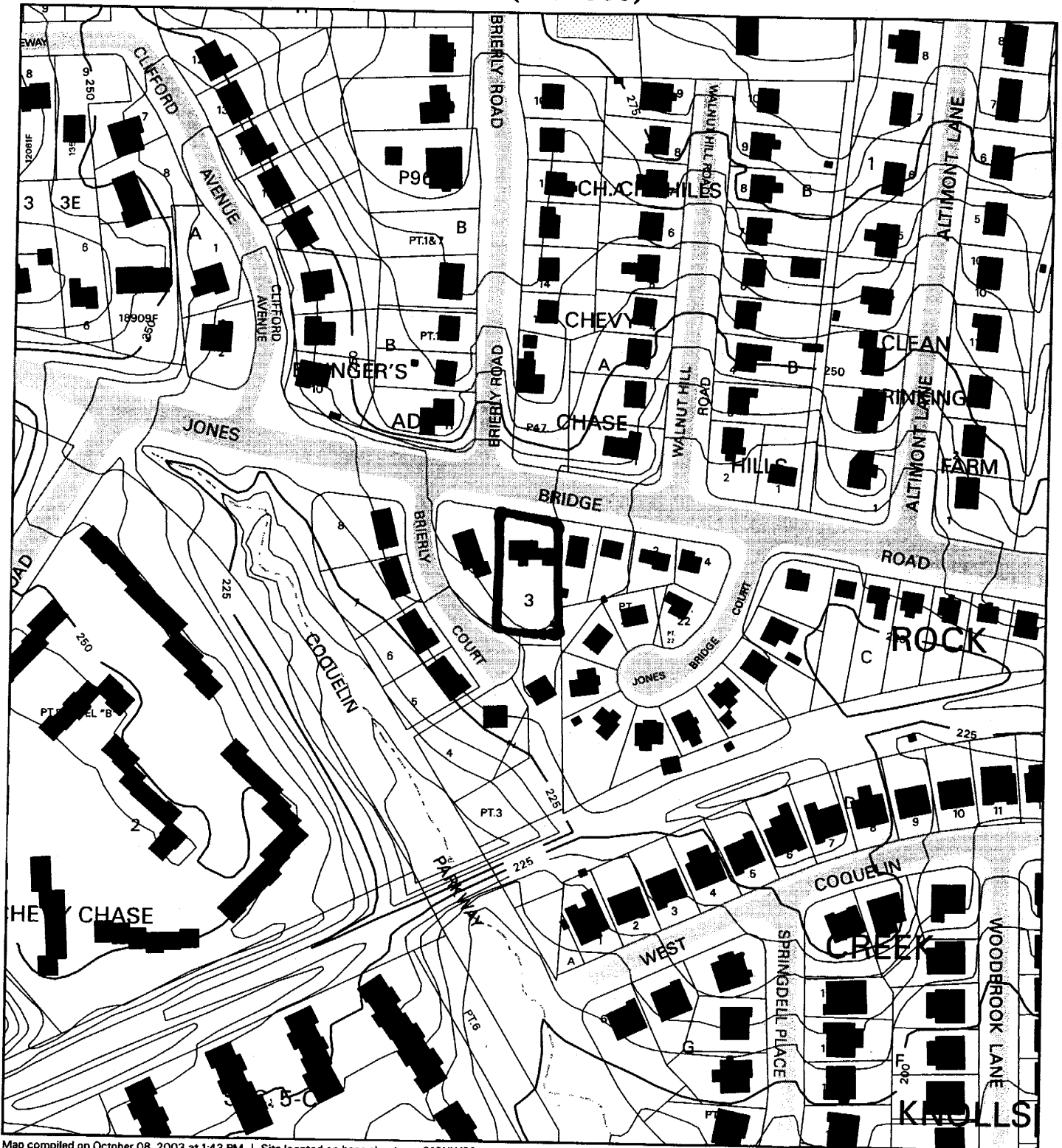
Agenda Item #05 -Preliminary Plan 1-03053
Silver Crest

Agenda Item #06 -Pre-Preliminary Plan 7-04008
Chevy Chase, Section 5C

Agenda Item #07 -Pre-Preliminary Plan 7-04007
Riding Stable Estate

Attachment

CHEVY CHASE, SECTION 5C (7-04008)



Map compiled on October 08, 2003 at 1:43 PM | Site located on base sheet no - 210NW03

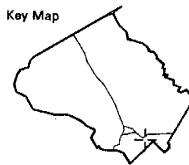
NOTICE

The planimetric, property, and topographic information shown on this map is based on copyrighted Map Products from the Montgomery County Department of Park and Planning of the Maryland -National Capital Park and Planning Commission, and may not be copied or reproduced without written permission from M-NCPPC.

Property lines are compiled by adjusting the property lines to topography created from aerial photography and should not be interpreted as actual field surveys. Planimetric features were compiled from 1:14400 scale aerial photography using stereo photogrammetric methods.

This map is created from a variety of data sources, and may not reflect the most current conditions in any one location and may not be completely accurate or up to date. All map features are approximately within five feet of their true location. This map may not be the same as a map of the same area plotted at an earlier time as the data is continuously updated. Use of this map, other than for general planning purposes is not recommended. - Copyright 1998

Key Map

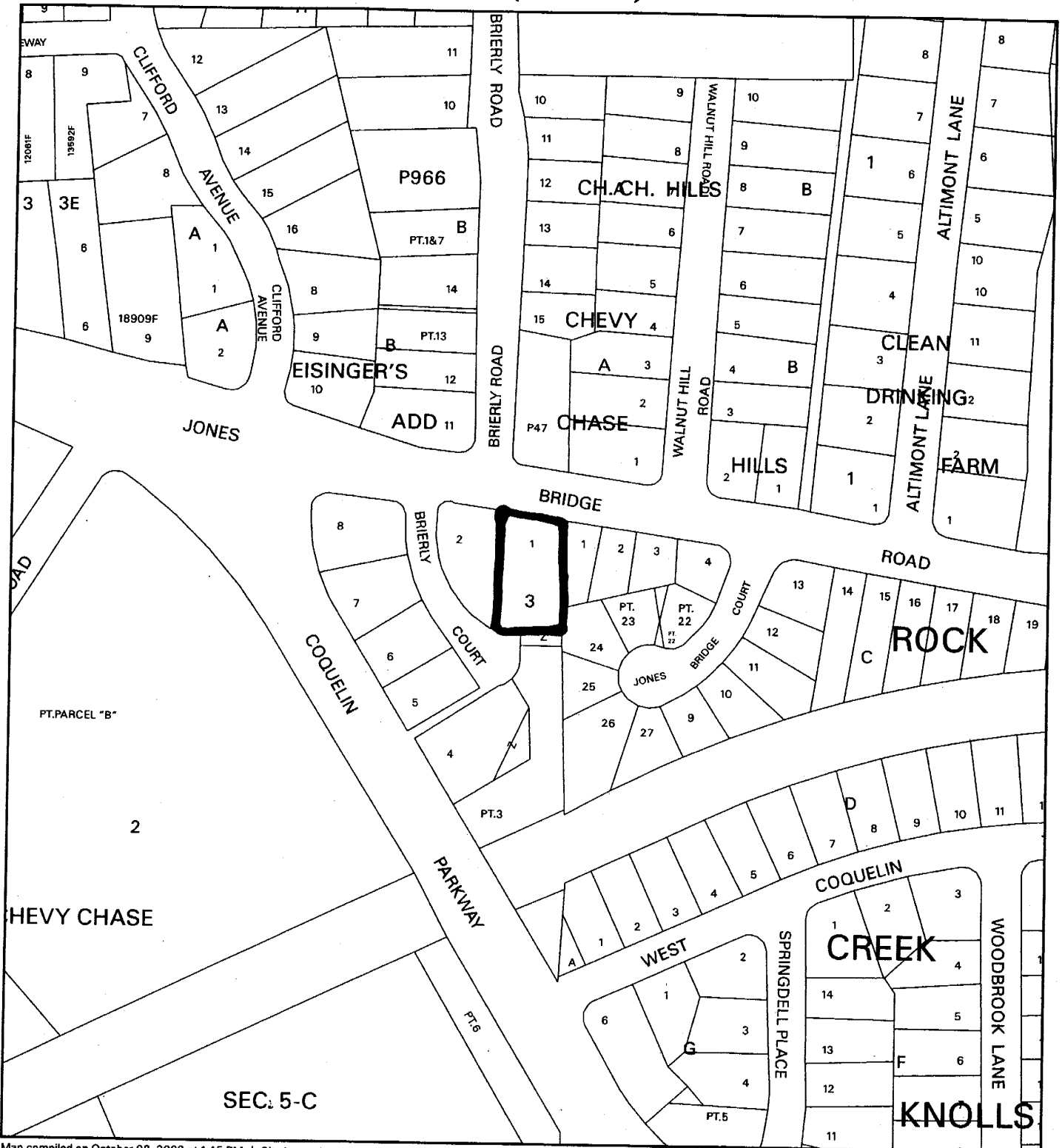


Research & Technology Center



1 : 2400

CHEVY CHASE, SECTION 5C (7-04008)



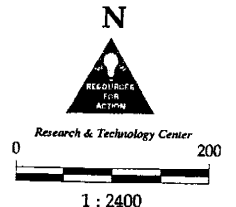
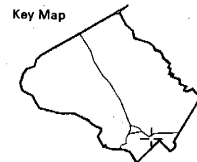
Map compiled on October 08, 2003 at 1:45 PM | Site located on base sheet no - 210NW03

NOTICE

The planimetric, property, and topographic information shown on this map is based on copyrighted Map Products from the Montgomery County Department of Park and Planning of the Maryland - National Capital Park and Planning Commission, and may not be copied or reproduced without written permission from M-NCPPC.

Property lines are compiled by adjusting the property lines to topography created from aerial photography and should not be interpreted as actual field surveys. Planimetric features were compiled from 1:14400 scale aerial photography using stereo photogrammetric methods.

This map is created from a variety of data sources, and may not reflect the most current conditions in any one location and may not be completely accurate or up to date. All map features are approximately within five feet of their true location. This map may not be the same as a map of the same area plotted at an earlier time as the data is continuously updated. Use of this map, other than for general planning purposes is not recommended. - Copyright 1998



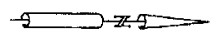
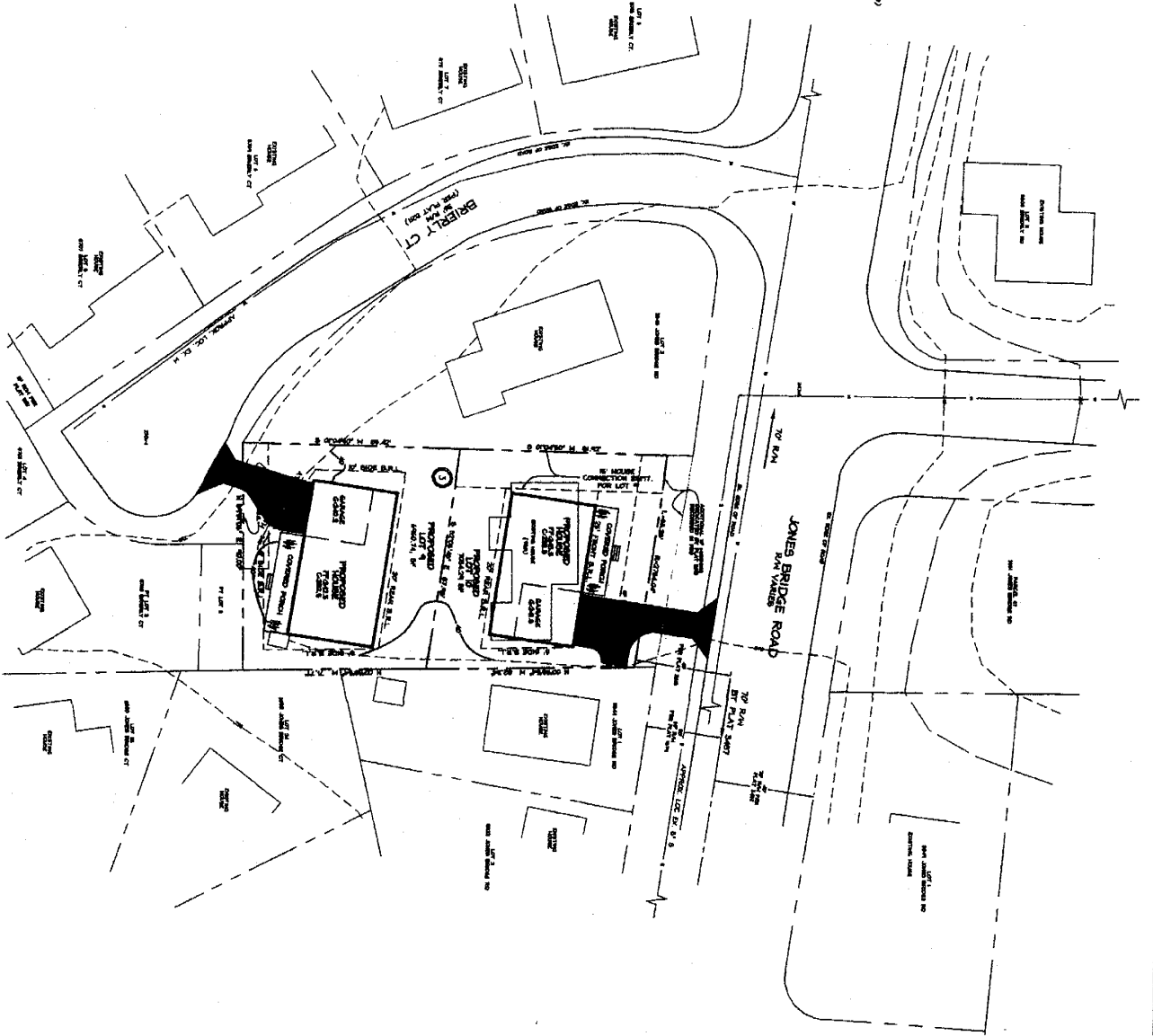
GENERAL NOTES

- 1) WORK CATEGORY - 1 - SURVEY CATEGORY - 1
- 2) PROPERTY OF "MONTGOMERY COUNTY"
- 3) PROPERTY MAPS OF THE HIGH LEVEL, BLOCK 3, CHEVY CHASE SECTION 5C, MONTGOMERY COUNTY, MARYLAND.
- 4) PROPERTY MAPS OF MONTGOMERY COUNTY SHOWING LOT 9, 10, 11, 12, 13, 14, 15, 16, 17, 18, 19, 20, 21, 22, 23, 24, 25, 26, 27, 28, 29, 30, 31, 32, 33, 34, 35, 36, 37, 38, 39, 40, 41, 42, 43, 44, 45, 46, 47, 48, 49, 50, 51, 52, 53, 54, 55, 56, 57, 58, 59, 60, 61, 62, 63, 64, 65, 66, 67, 68, 69, 70, 71, 72, 73, 74, 75, 76, 77, 78, 79, 80, 81, 82, 83, 84, 85, 86, 87, 88, 89, 90, 91, 92, 93, 94, 95, 96, 97, 98, 99, 100.
- 5) SITE IS LOCATED IN THE UPPER MIDDLE CHEVY CHASE SECTION.
- 6) LOCAL UTILITIES SHOWN: WATER, SEWER, GAS, TELEPHONE, CABLE TELEVISION.
- 7) LOCAL UTILITIES SHOWN: WATER, SEWER, GAS, TELEPHONE, CABLE TELEVISION.

ZONING DATA

- 1) ZONING - R-40
- 2) LOT AREA - 4,000 SF
- 3) FRONT SETBACK - 30 FT (OR ESTABLISHED)
- 4) SIDE SETBACK - 10 FT (OR ESTABLISHED)
- 5) REAR SETBACK - 10 FT (OR ESTABLISHED)

MISS UTILITY
 MISS UTILITY AT 1-800-281-7777. MISS UTILITY TO BE LOCATED IN THE UPPER MIDDLE CHEVY CHASE SECTION. MISS UTILITY TO BE LOCATED IN THE UPPER MIDDLE CHEVY CHASE SECTION. MISS UTILITY TO BE LOCATED IN THE UPPER MIDDLE CHEVY CHASE SECTION.



PRINTED BY
 CAS ENGINEERING
 Lot 22 201

OWNER/APPLICANT
 MONTGOMERY COUNTY
 ATTENTION: CIVIL ENGINEERING
 3000 CHEVY CHASE ROAD, SUITE 100
 CHEVY CHASE, MARYLAND 20815
 (301) 987-7000
 (301) 987-7001
 (301) 987-7002

PROPOSED
 LOTS 9 & 10, BLOCK 3
 CHEVY CHASE, SECTION 5C
 PRE-APPLICATION PLAN

3346 JONES BRIDGE ROAD

PROPOSED LOTS 9 & 10, BLOCK 3
CHEVY CHASE, SECTION 5C
 BETHESDA (7TH) ELECTION DISTRICT
 MONTGOMERY COUNTY, MARYLAND

PRE-APPLICATION PLAN

CAS ENGINEERING
 CIVIL • SURVEYING • LAND PLANNING
 A DIVISION OF CAS ENTERPRISES, INC.
 108 West Ridgeville Boulevard, Suite 101, Mount Airy, Maryland 21771
 DC Metro (301) 907-8033 FAX (301) 907-8045

DATE	BY	REVISION	PROJECT	DATE
03-22-03	JAR	REVISIONS PER D.R.C. COMMENTS	03.124	09/2003
			JAR	JAR
			CAS	CAS