

Item #15



THE MARYLAND-NATIONAL CAPITAL PARK AND PLANNING COMMISSION

M E M O R A N D U M

**DATE:** November 14, 2003  
**TO:** Montgomery County Planning Board  
**FROM:** A. Malcolm Shaneman  
Development Review Division  
(301) 495-4587  
**SUBJECT:** Informational Maps for Subdivision Items on the  
Planning Board's Agenda for November 20, 2003.

-----

Attached are copies of plan drawings for Item #06, #07, #09, #11 and #15. These subdivision items are scheduled for Planning Board consideration on November 20, 2003. The items are further identified as follows:

Agenda Item #06 -Preliminary Plan 1-97033A  
Hardings Subdivision

Agenda Item #07 -Preliminary Plan 1-03057A  
Cider Barrel Property

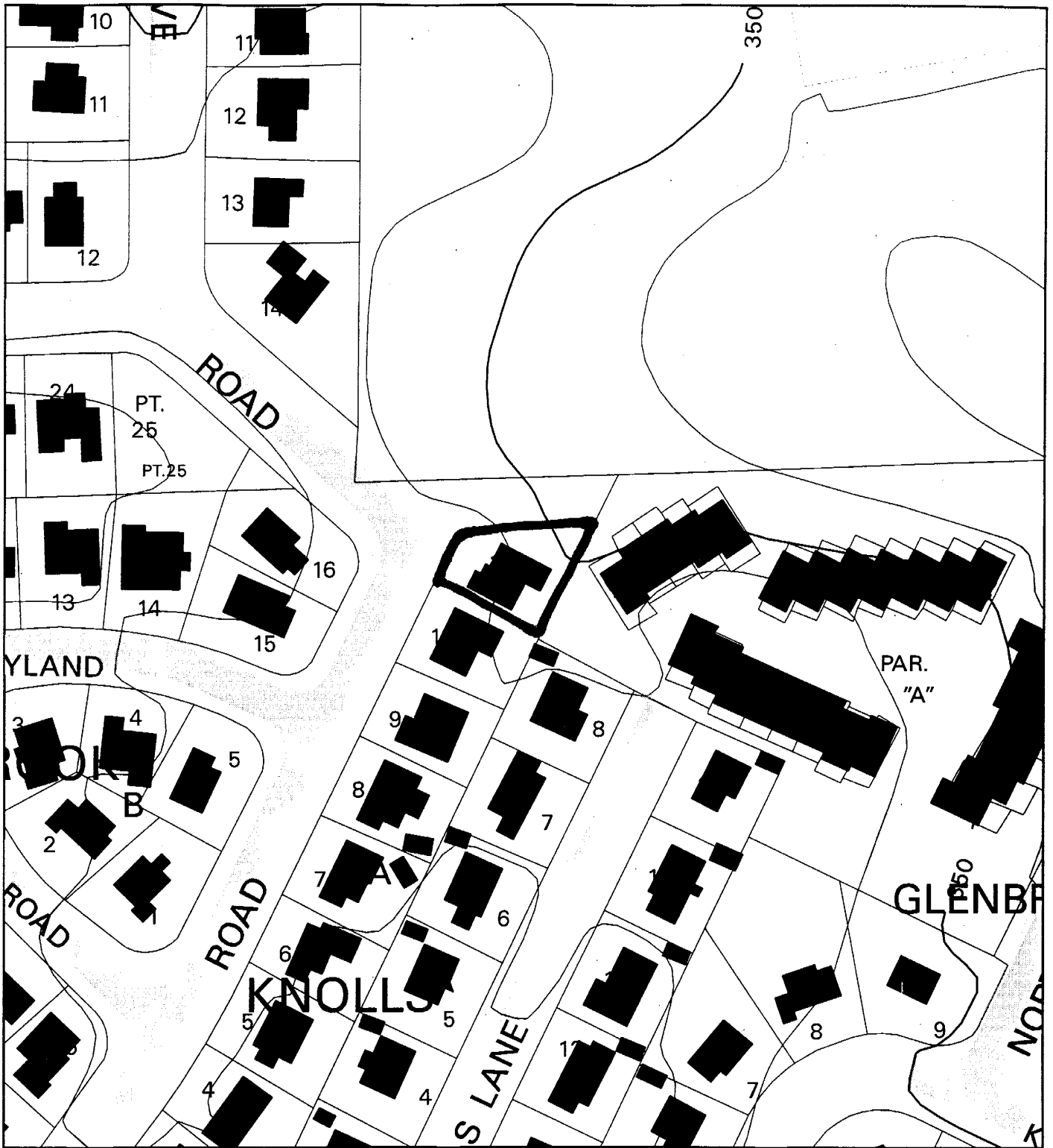
Agenda Item #09 -Preliminary Plan 1-03086  
Potomac Country Corner

Agenda Item #11 -Preliminary Plan 1-04016  
Gables Rothbury Square

Agenda Item #15 -Preliminary Plan 1-04024  
Glenbrook Knoll

Attachment

# GLENBROOK KNOLL (1-04024)



Map compiled on November 14, 2003 at 10:59 AM | Site located on base sheet no. 210NW05

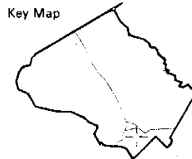
## NOTICE

The planimetric, property, and topographic information shown on this map is based on copyrighted Map Products from the Montgomery County Department of Park and Planning of the Maryland-National Capital Park and Planning Commission, and may not be copied or reproduced without written permission from M-NCPPC.

Property lines are compiled by adjusting the property lines to topography created from aerial photography and should not be interpreted as actual field surveys. Planimetric features were compiled from 1:14400 scale aerial photography using stereo photogrammetric methods.

This map is created from a variety of data sources, and may not reflect the most current conditions in any one location and may not be completely accurate or up to date. All map features are approximately within five feet of their true location. This map may not be the same as a map of the same area plotted at an earlier time as the data is continuously updated. Use of this map, other than for general planning purposes is not recommended. - Copyright 1998

Key Map



N

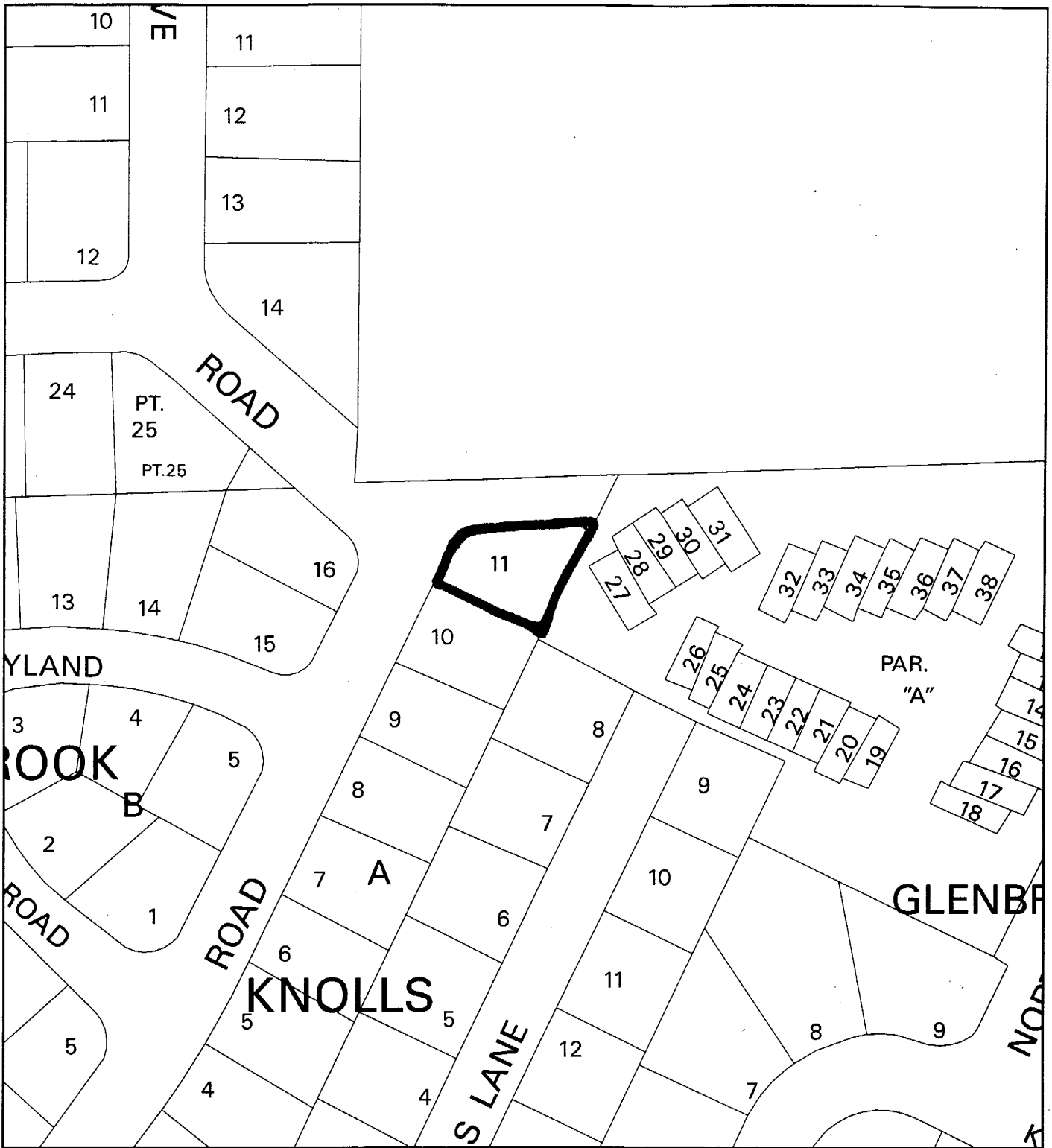


Research & Technology Center



1:1200

# GLENBROOK KNOLL (1-04024)



Map compiled on November 14, 2003 at 10:47 AM | Site located on base sheet no - 210NW05

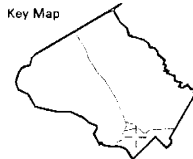
## NOTICE

The planimetric, property, and topographic information shown on this map is based on copyrighted Map Products from the Montgomery County Department of Park and Planning of the Maryland-National Capital Park and Planning Commission, and may not be copied or reproduced without written permission from M-NCPPC.

Property lines are compiled by adjusting the property lines to topography created from aerial photography and should not be interpreted as actual field surveys. Planimetric features were compiled from 1:14400 scale aerial photography using stereo photogrammetric methods.

This map is created from a variety of data sources, and may not reflect the most current conditions in any one location and may not be completely accurate or up to date. All map features are approximately within five feet of their true location. This map may not be the same as a map of the same area plotted at an earlier time as the data is continuously updated. Use of this map, other than for general planning purposes is not recommended. - Copyright 1998

Key Map



N



Research & Technology Center



1 : 1200

