

Item #6



THE MARYLAND-NATIONAL CAPITAL PARK AND PLANNING COMMISSION

M E M O R A N D U M

DATE: November 14, 2003
TO: Montgomery County Planning Board
FROM: A. Malcolm Shaneman
Development Review Division
(301) 495-4587
SUBJECT: Informational Maps for Subdivision Items on the
Planning Board's Agenda for November 20, 2003.

Attached are copies of plan drawings for Item #06, #07, #09, #11 and #15. These subdivision items are scheduled for Planning Board consideration on November 20, 2003. The items are further identified as follows:

Agenda Item #06 -Preliminary Plan 1-97033A
Hardings Subdivision

Agenda Item #07 -Preliminary Plan 1-03057A
Cider Barrel Property

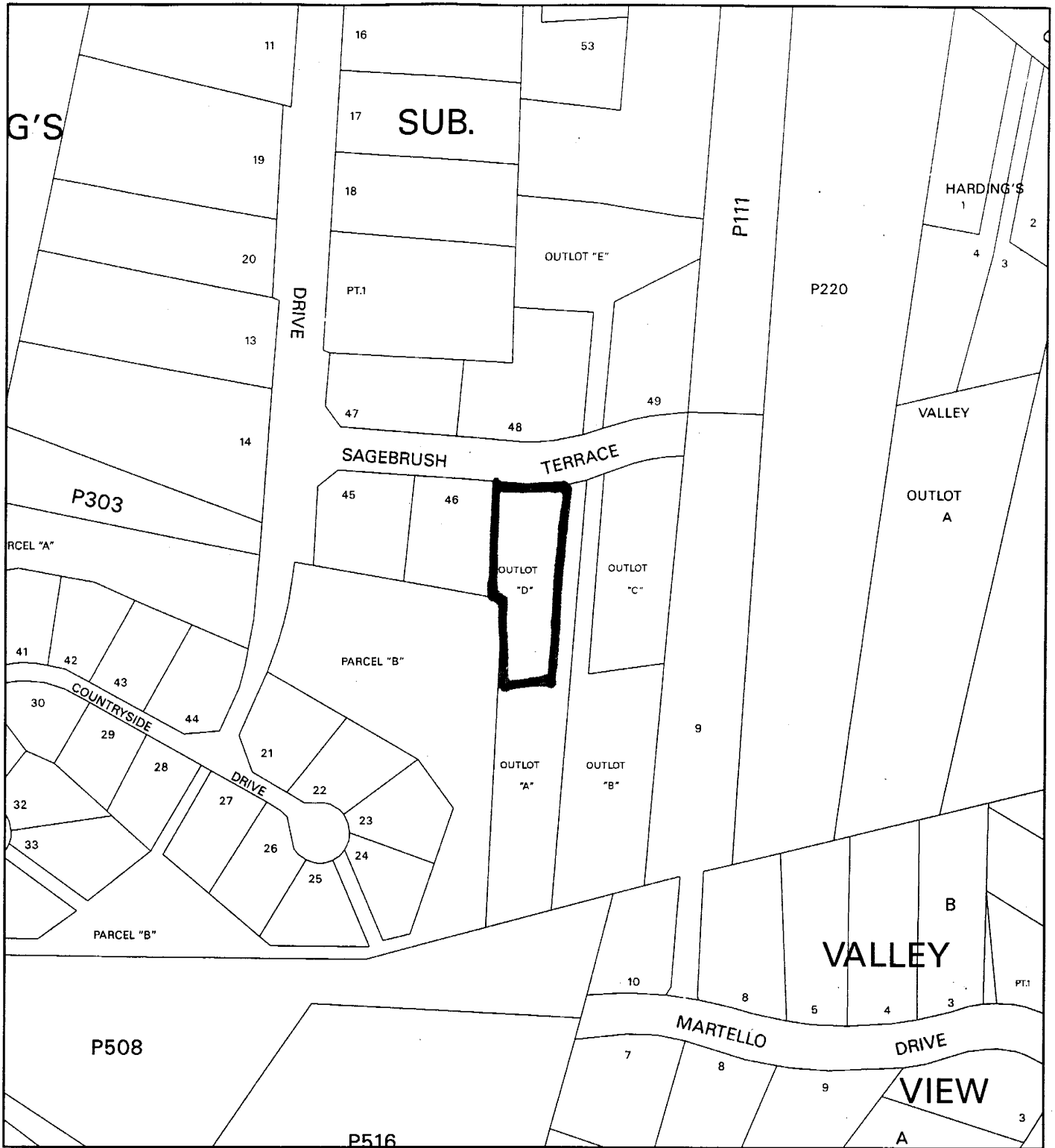
Agenda Item #09 -Preliminary Plan 1-03086
Potomac Country Corner

Agenda Item #11 -Preliminary Plan 1-04016
Gables Rothbury Square

Agenda Item #15 -Preliminary Plan 1-04024
Glenbrook Knoll

Attachment

HARDINGS SUBDIVISION (1-97033A)



Map compiled on November 14, 2003 at 10:26 AM | Site located on base sheet no - 218NE03

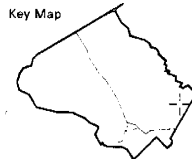
NOTICE

The planimetric, property, and topographic information shown on this map is based on copyrighted Map Products from the Montgomery County Department of Park and Planning of the Maryland -National Capital Park and Planning Commission, and may not be copied or reproduced without written permission from M-NCPPC.

Property lines are compiled by adjusting the property lines to topography created from aerial photography and should not be interpreted as actual field surveys. Planimetric features were compiled from 1:14400 scale aerial photography using stereo photogrammetric methods.

This map is created from a variety of data sources, and may not reflect the most current conditions in any one location and may not be completely accurate or up to date. All map features are approximately within five feet of their true location. This map may not be the same as a map of the same area plotted at an earlier time as the data is continuously updated. Use of this map, other than for general planning purposes is not recommended. - Copyright 1998

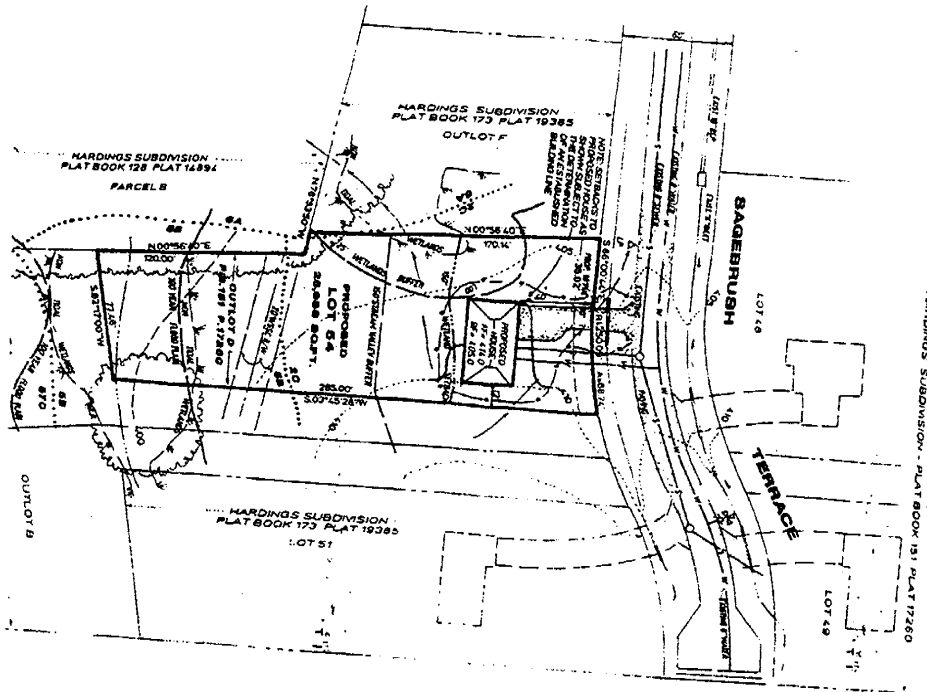
Key Map



Research & Technology Center



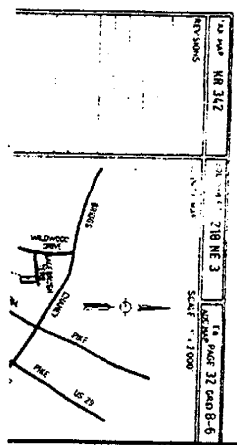
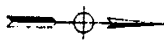
1 : 2400



HARDINGS SUBDIVISION - PLAT BOOK 173 PLAT 19265

NOTES

1. Area included in plan = 25,998 s.f. or 0.59 acres.
2. Existing zoning is R-200 (Standard development).
3. No restriction is public use proposed.
4. Number of lots proposed = 1
5. Boundary, as shown from plat Book 151 Plat 17260
6. Topography, as shown, from M-402, R2 aerial photography.
7. Utilities, as shown, from available plans.
8. Soils, from Sheet 21 of the Soils Maps of Montgomery County are R, S8 and G4, as shown hereon.
9. 100 Year floodplain, as shown, from a floodplain study by this office.
10. Planning Area = Fairland (PA 34).
11. Storm Category-5-6 Water Category W-1.
12. Drainage Basin- Paul Branch- Tributary No. 5 Existing "Countrywide" Facility (Use III).
13. On-site stormwater management quantity control water granted July 18, 1998.
14. There are no historic or cultural resources on site.
15. Plan is subject to the Forest Conservation Law of 1991 M.U./S.D. No. 4-9702 (approved 9-4-98).
16. This plan is a resubmission of Outlot B, as recorded in Plat Book 151 as Plat 17260 on 2-16-89. Property recorded by deed in Liber 11047 folio 112.
18. Plan is scaled and location of certain elements and dimensions are subject to adjustment at time of record plat.
19. Property is included in previously approved Preliminary Plan 1-80028.



Plan No. 18 342
 Date: 7/18/93
 Scale: 1" = 100'
 Page 32 of 36