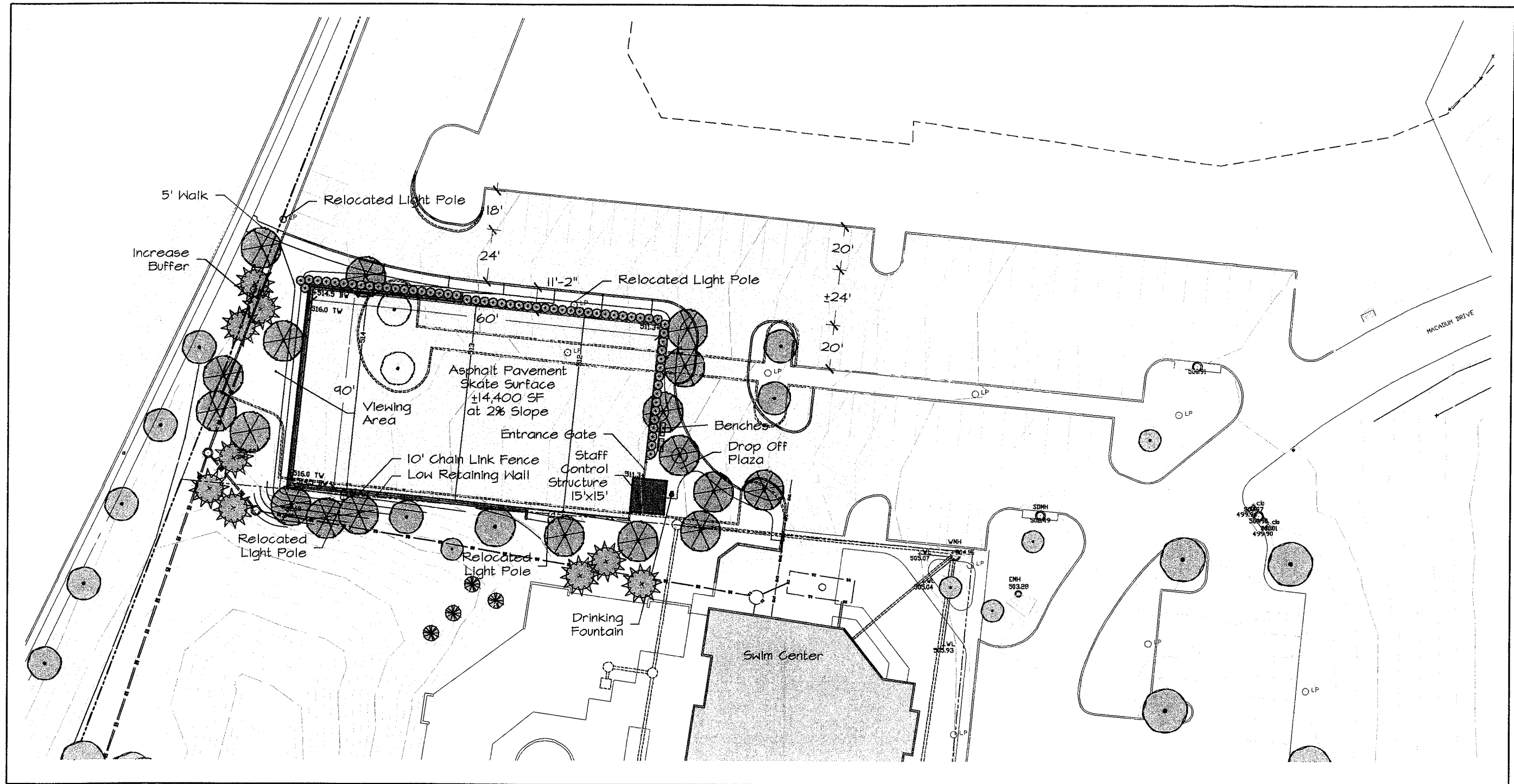


Facility Plan

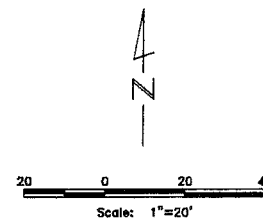
FACILITY PLAN FOR OLNEY MANOR SKATEBOARD PARK



Final Facility Plan completed on December 4, 2003

Legend

- | | | | |
|--|-------------------------|--|------------------------|
| | Proposed Shade Tree | | 1' Contour |
| | Proposed Evergreen Tree | | 5' Contour |
| | Proposed Shrub | | Property Line |
| | Existing Tree | | Adjacent property line |
| | | | Storm drain |
| | | | Sanitary sewer |

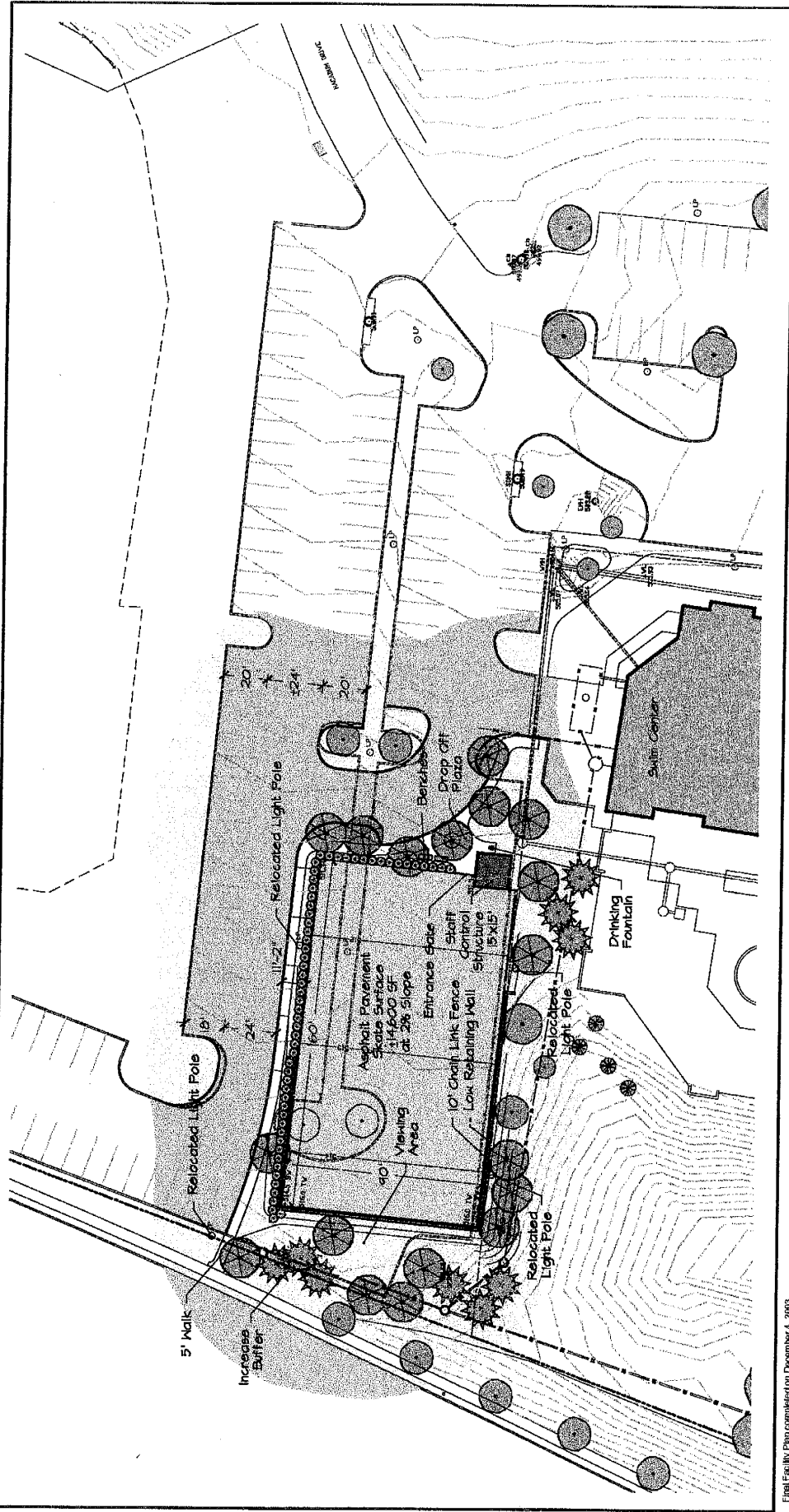


MONTGOMERY COUNTY DEPARTMENT OF PARK AND PLANNING
THE MARYLAND-NATIONAL CAPITAL PARK AND PLANNING COMMISSION
 8787 Georgia Avenue - Silver Spring, Maryland 20910-3760

PREPARED BY:

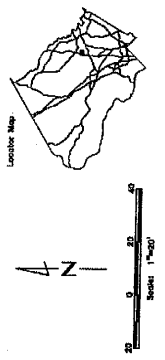
PHOENIX ENGINEERING, INC.
 CONSULTING ENGINEERS
 1420-A JOH AVENUE
 BALTIMORE, MARYLAND 21227
 (410) 247-8633 FAX 247-9397

FACILITY PLAN FOR OLNEY MANOR SKATEBOARD PARK



Final Facility Plan completed on December 4, 2003

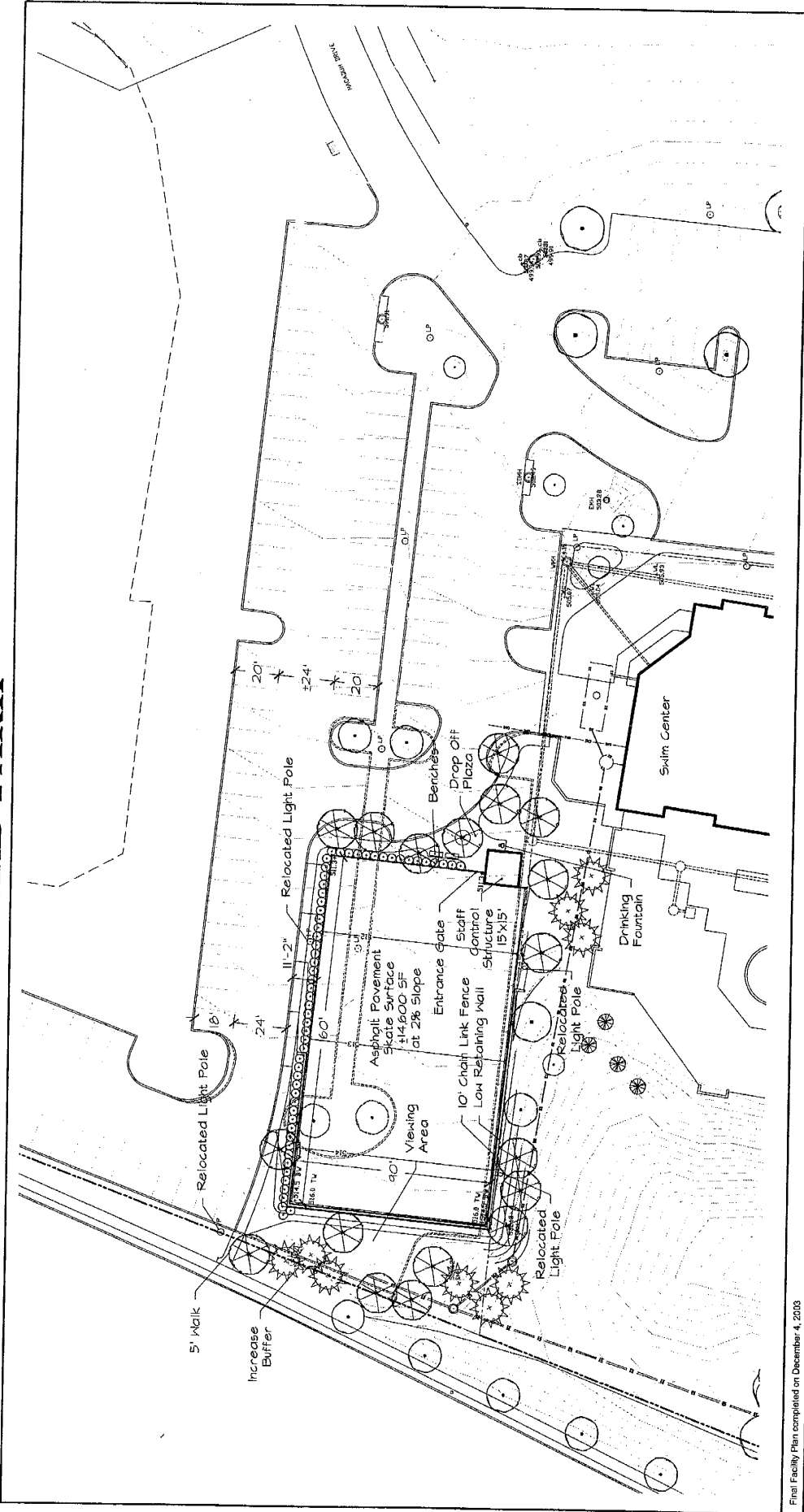
- Legend**
- Proposed Tree
 - Existing Tree
 - 3' Center
 - 1' Center
 - Property Line
 - Adjacent Property Line
 - Storm drain
 - Sanitary sewer



MONTGOMERY COUNTY DEPARTMENT OF PARK AND PLANNING
 THE MARYLAND-NATIONAL CAPITAL PARK AND PLANNING COMMISSION
 8787 Georgia Avenue - Silver Spring, Maryland 20910-3760

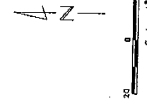
PHOENIX ENGINEERING, INC.
 CONSULTING ENGINEERS
 10000 W. WILSON AVENUE
 SUITE 200, WASHINGTON, MARYLAND 20727
 (301) 414-8833 FAX (301) 414-1417

FACILITY PLAN FOR OLNEY MANOR SKATEBOARD PARK



Final Facility Plan completed on December 4, 2003

- Legend**
- Proposed Trees
 - Existing Trees
 - 5' Center
 - 1' Contour
 - Property Line
 - Adjacent Property Line
 - Storm Drain
 - Sewer

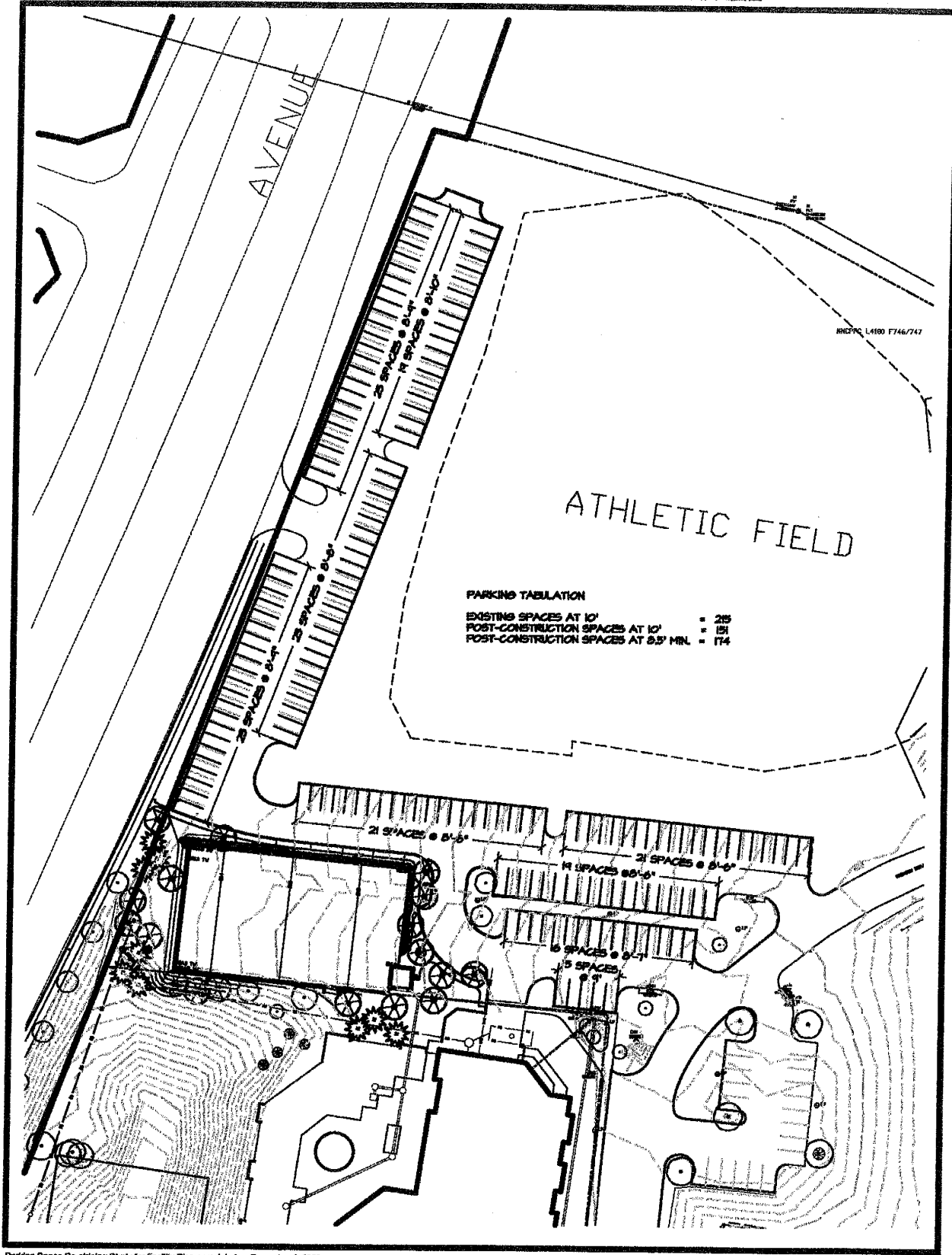


MONTGOMERY COUNTY DEPARTMENT OF PARK AND PLANNING
 THE MARYLAND-NATIONAL CAPITAL PARK AND PLANNING COMMISSION
 8787 Georgia Avenue - Silver Spring, Maryland 20910-3760

PHOENIX ENGINEERING, INC.
 CONSULTING ENGINEERS
 8000 W. CENTRAL EXPRESSWAY, SUITE 200
 GAITHERSBURG, MARYLAND 20878
 (410) 241-3333 FAX (410) 241-3377

**Parking Improvements
Plan**

PARKING IMPROVEMENTS PLAN FOR
OLNEY MANOR SKATEBOARD PARK



Parking Space Re-striping Study for Facility Plan completed on December 4, 2003

