

Item # 2



THE MARYLAND-NATIONAL CAPITAL PARK AND PLANNING COMMISSION

M E M O R A N D U M

DATE: November 26, 2003
TO: Montgomery County Planning Board
FROM: A. Malcolm Shaneman
Development Review Division
(301) 495-4587
SUBJECT: Informational Maps for Subdivision Items on the
Planning Board's Agenda for December 04, 2003.

-

Attached are copies of plan drawings for Item #02, #04, #06, and #09. These subdivision items are scheduled for Planning Board consideration on December 04, 2003. The items are further identified as follows:

Agenda Item #02 -Preliminary Plan 1-03100
Townes at Rosedale Park

Agenda Item #04 -Preliminary Plan 1-98076
Scandinavian Import Servicecenter

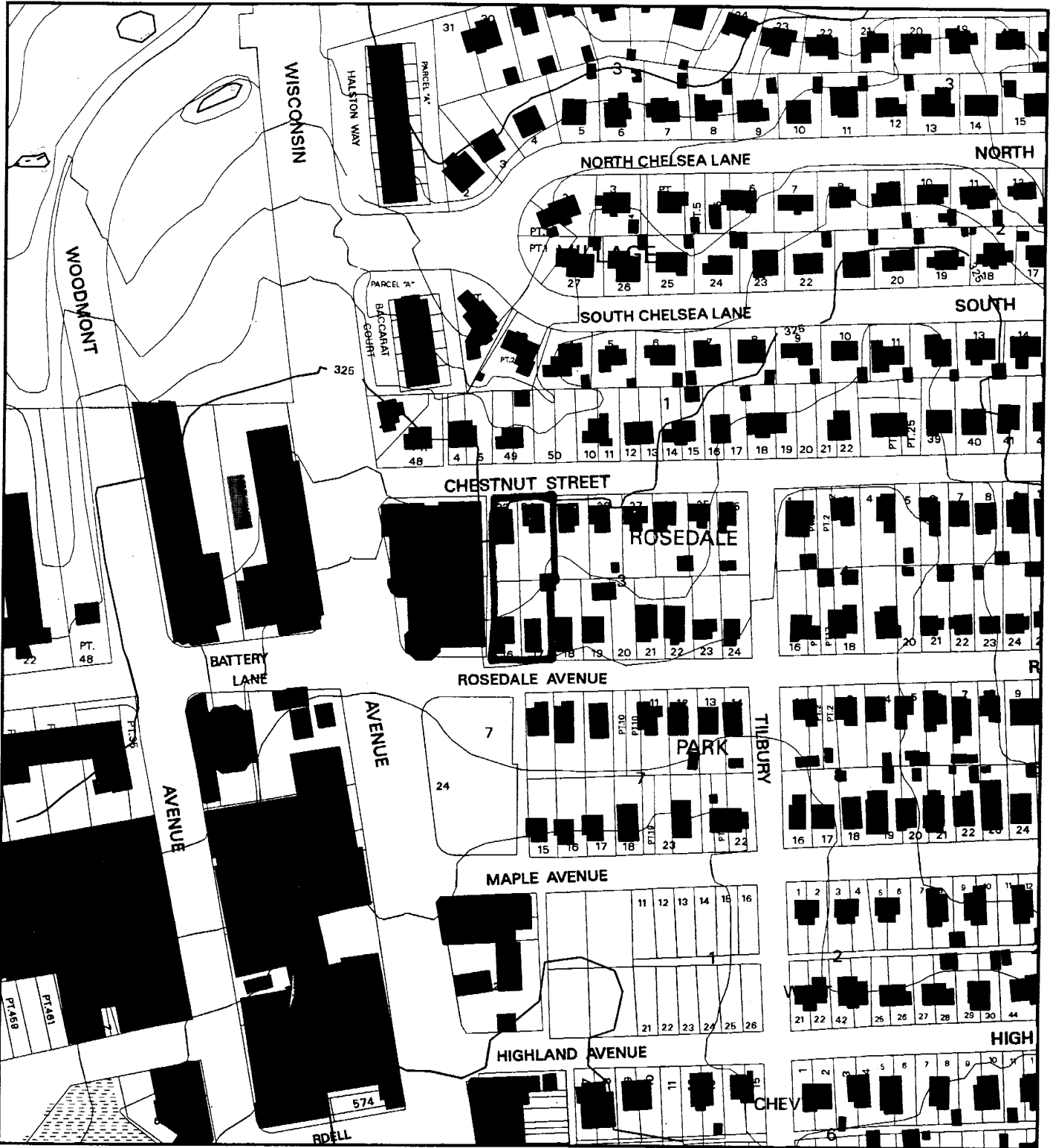
Agenda Item #06 -Preliminary Plan 1-88216R
Hoyles Mill Village

Agenda Item #09 -Preliminary Plan 1-02023
Westchester

Attachment

VICINITY MAP FOR

TOWNES AT ROSEDALE PARK (1-03100)



Map compiled on June 05, 2003 at 11:19 AM | Site located on base sheet no - 210NW05

NOTICE

The planimetric, property, and topographic information shown on this map is based on copyrighted Map Products from the Montgomery County Department of Park and Planning of the Maryland - National Capital Park and Planning Commission, and may not be copied or reproduced without written permission from M-NCPPC.

Property lines are compiled by adjusting the property lines to topography created from aerial photography and should not be interpreted as actual field surveys. Planimetric features were compiled from 1:14400 scale aerial photography using stereo photogrammetric methods.

This map is created from a variety of data sources, and may not reflect the most current conditions in any one location and may not be completely accurate or up to date. All map features are approximately within five feet of their true location. This map may not be the same as a map of the same area plotted at an earlier time as the data is continuously updated. Use of this map, other than for general planning purposes is not recommended. - Copyright 1998

Key Map



N



Research & Technology Center



1 : 2400

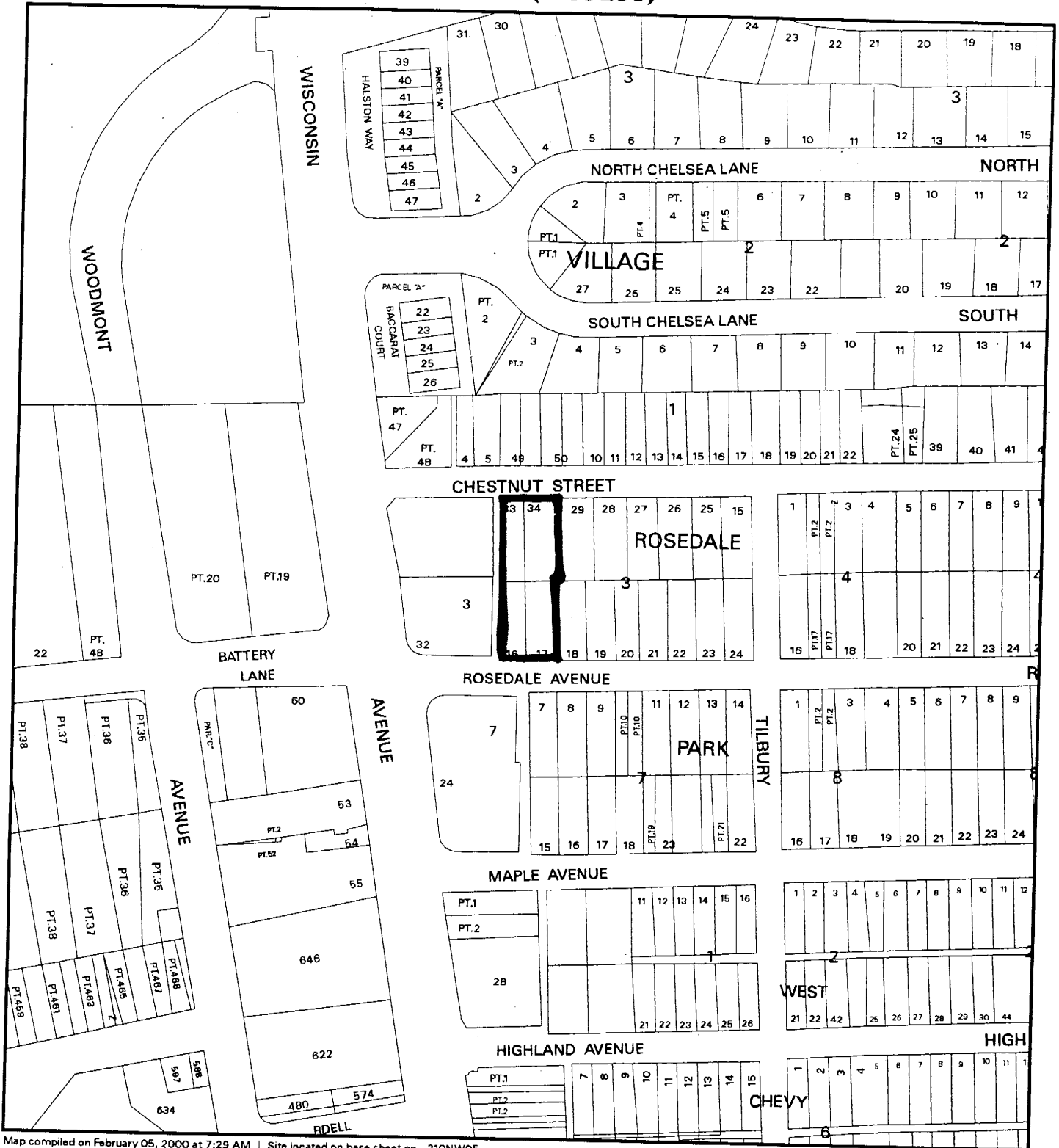
M-NCPPC

MONTGOMERY COUNTY DEPARTMENT OF PARK AND PLANNING
THE MARYLAND-NATIONAL CAPITAL PARK AND PLANNING COMMISSION

8787 Georgia Avenue - Silver Spring, Maryland 20910-3760

VICINITY MAP FOR

TOWNES AT ROSEDALE PARK (1-03100)



Map compiled on February 05, 2000 at 7:29 AM | Site located on base sheet no - 210NW05

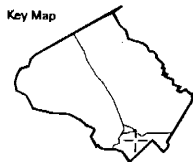
NOTICE

The planimetric, property, and topographic information shown on this map is based on copyrighted Map Products from the Montgomery County Department of Park and Planning of the Maryland-National Capital Park and Planning Commission, and may not be copied or reproduced without written permission from M-NCPPC.

Property lines are compiled by adjusting the property lines to topography created from aerial photography and should not be interpreted as actual field surveys. Planimetric features were compiled from 1:14400 scale aerial photography using stereo photogrammetric methods.

This map is created from a variety of data sources, and may not reflect the most current conditions in any one location and may not be completely accurate or up to date. All map features are approximately within five feet of their true location. This map may not be the same as a map of the same area plotted at an earlier time as the data is continuously updated. Use of this map, other than for general planning purposes is not recommended. - Copyright 1998

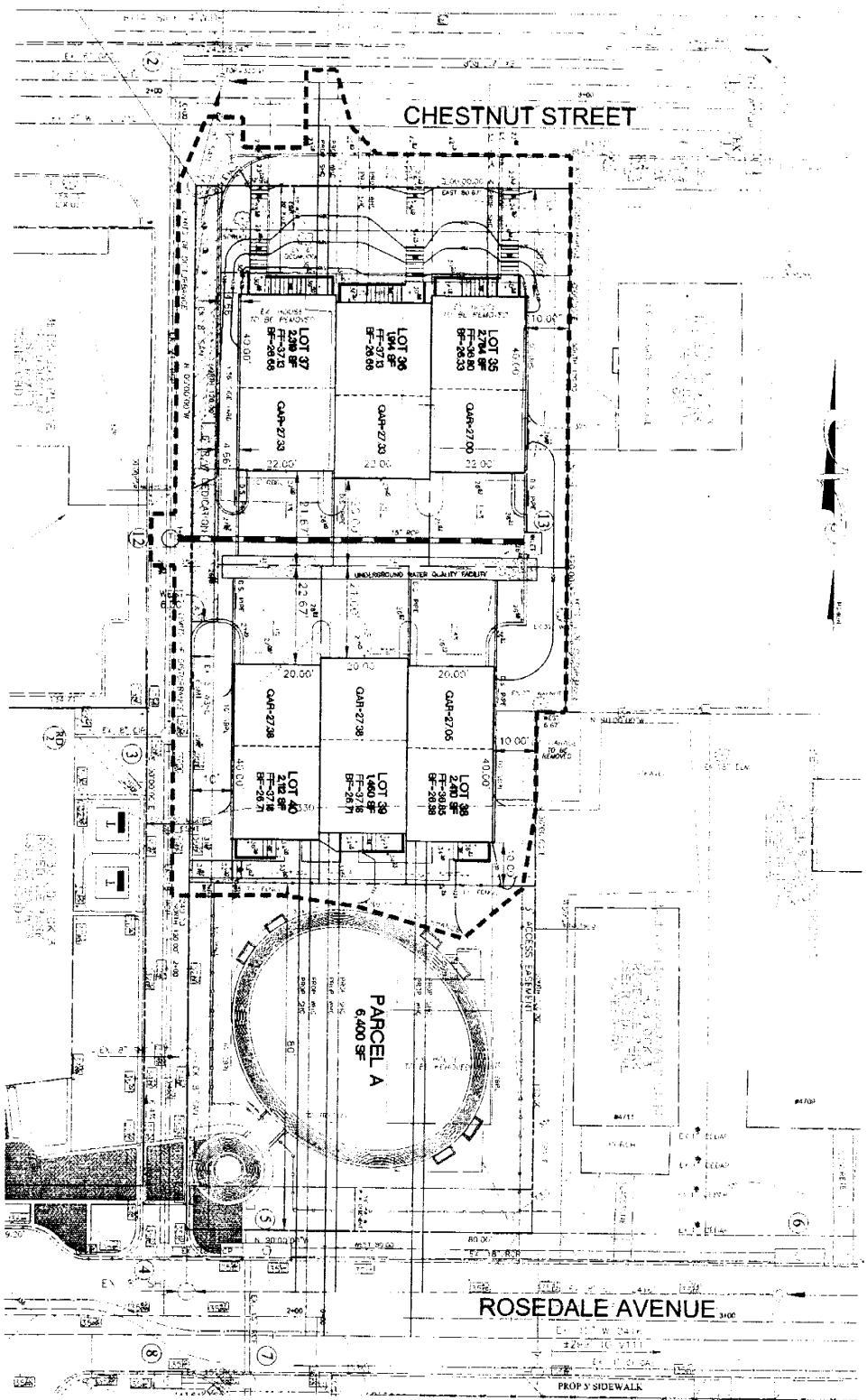
Key Map



N



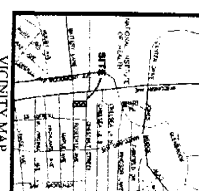
1 : 2400



- GENERAL NOTES:**
1. ALL DIMENSIONS ARE IN FEET AND INCHES.
 2. ALL DIMENSIONS ARE TO FACE UNLESS OTHERWISE NOTED.
 3. ALL DIMENSIONS ARE TO FACE UNLESS OTHERWISE NOTED.
 4. ALL DIMENSIONS ARE TO FACE UNLESS OTHERWISE NOTED.
 5. ALL DIMENSIONS ARE TO FACE UNLESS OTHERWISE NOTED.
 6. ALL DIMENSIONS ARE TO FACE UNLESS OTHERWISE NOTED.
 7. ALL DIMENSIONS ARE TO FACE UNLESS OTHERWISE NOTED.
 8. ALL DIMENSIONS ARE TO FACE UNLESS OTHERWISE NOTED.
 9. ALL DIMENSIONS ARE TO FACE UNLESS OTHERWISE NOTED.
 10. ALL DIMENSIONS ARE TO FACE UNLESS OTHERWISE NOTED.
- LEGEND:**
- 1. LOT 37
 - 2. LOT 38
 - 3. LOT 39
 - 4. LOT 40
 - 5. LOT 41
 - 6. LOT 42
 - 7. PARCEL A
 - 8. QAR-27-23
 - 9. QAR-27-26
 - 10. QAR-27-28
 - 11. QAR-27-29
 - 12. QAR-27-30

VICINITY MAP

SCALE: 1" = 100'



PRELIMINARY PLAN (ENLARGEMENT)

TOWNES AT ROSEDALE PARK

7TH ELECTION DISTRICT MONTGOMERY COUNTY, MARYLAND

OWNER: DEVA HOLDINGS, LLC
MANAGER/DESIGN CONSULTANT: DEVA HOLDINGS, LLC
DESIGNER: DEVA HOLDINGS, LLC
DATE: 10/11/11

DRAWING DESCRIPTION:
 PRELIMINARY PLAN (ENLARGEMENT)
 SHEET 1 OF 1 (TOTAL SHEETS)

DATE: 10/11/11

SCALE: AS SHOWN

PROJECT NO.: 11-0000000000

Dewberry
 4th West District Avenue, Suite 200
 Gaithersburg, MD 20878-1114
 (301) 948-8300 Fax: (301) 274-7007

Equipment Provided & Supplied by: Landscape Architects