

Item #7



THE MARYLAND-NATIONAL CAPITAL PARK AND PLANNING COMMISSION

MEMORANDUM

**DATE:** January 2, 2004  
**TO:** Montgomery County Planning Board  
**FROM:** A. Malcolm Shaneman  
Development Review Division  
(301) 495-4587  
**SUBJECT:** Informational Maps for Subdivision Items on the  
Planning Board's Agenda for January 08, 2004.

---

Attached are copies of plan drawings for Item #06, #07, #08, and #10. These subdivision items are scheduled for Planning Board consideration on January 08, 2004. The items are further identified as follows:

Agenda Item #06 -Preliminary Plan 1-84246A  
Proposed World Headquarters for  
Seventh-Day Adventists Church

Agenda Item #07 -Preliminary Plan 1-04014  
American University Park

Agenda Item #08 -Preliminary Plan 1-04011  
Meadowsweet

Agenda Item #10 -Preliminary Plan 1-04001  
Edwards Property

Attachment

# AMERICAN UNIVERSITY PARK (1-04014)



Map compiled on September 08, 2003 at 3:55 PM | Site located on base sheet no - 206NW04

## NOTICE

The planimetric, property, and topographic information shown on this map is based on copyrighted Map Products from the Montgomery County Department of Park and Planning of the Maryland-National Capital Park and Planning Commission, and may not be copied or reproduced without written permission from M-NCPPC.

Property lines are compiled by adjusting the property lines to topography created from aerial photography and should not be interpreted as actual field surveys. Planimetric features were compiled from 1:14400 scale aerial photography using stereo photogrammetric methods.

This map is created from a variety of data sources, and may not reflect the most current conditions in any one location and may not be completely accurate or up to date. All map features are approximately within five feet of their true location. This map may not be the same as a map of the same area plotted at an earlier time as the data is continuously updated. Use of this map, other than for general planning purposes is not recommended. - Copyright 1998

Key Map



N



Research & Technology Center



1 : 2400

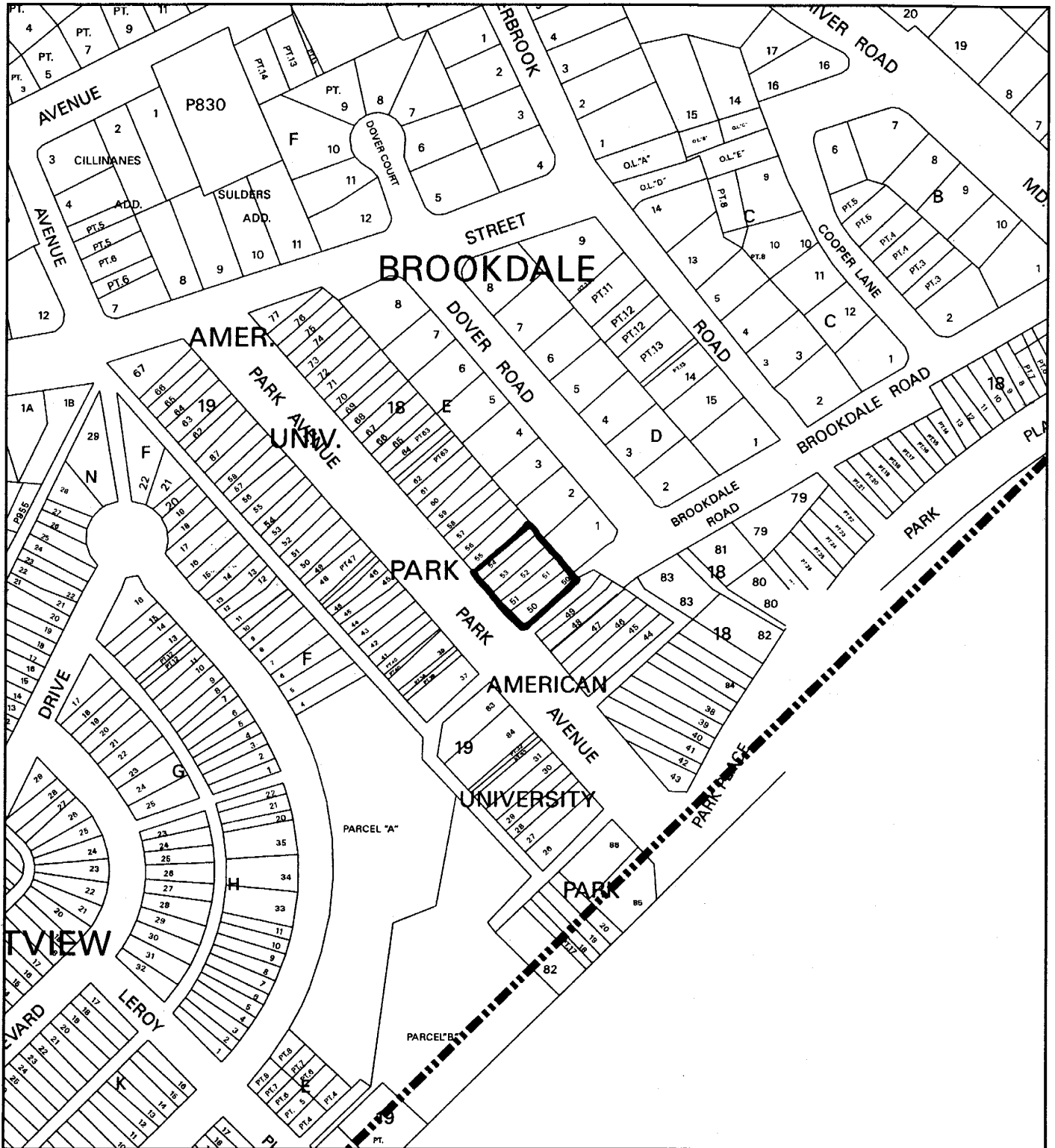
M-NCPPC

**MONTGOMERY COUNTY DEPARTMENT OF PARK AND PLANNING**

THE MARYLAND-NATIONAL CAPITAL PARK AND PLANNING COMMISSION

8787 Georgia Avenue - Silver Spring, Maryland 20910-3760

# AMERICAN UNIVERSITY PARK (1-04014)



Map compiled on September 08, 2003 at 4:03 PM | Site located on base sheet no - 206NW04

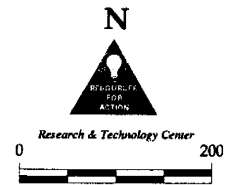
## NOTICE

The planimetric, property, and topographic information shown on this map is based on copyrighted Map Products from the Montgomery County Department of Park and Planning of the Maryland - National Capital Park and Planning Commission, and may not be copied or reproduced without written permission from M-NCPPC.

Property lines are compiled by adjusting the property lines to topography created from aerial photography and should not be interpreted as actual field surveys. Planimetric features were compiled from 1:14400 scale aerial photography using stereo photogrammetric methods.

This map is created from a variety of data sources, and may not reflect the most current conditions in any one location and may not be completely accurate or up to date. All map features are approximately within five feet of their true location. This map may not be the same as a map of the same area plotted at an earlier time as the data is continuously updated. Use of this map, other than for general planning purposes is not recommended. - Copyright 1998

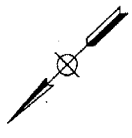
Key Map



1 : 2400

**NOTES**

1. This subdivision is a subdivision of a subdivision and is not a subdivision of a tract of land.
2. The subdivision is shown on the Land Records of Montgomery County, Maryland, as shown on the map of the subdivision.
3. The subdivision is shown on the map of the subdivision.
4. The subdivision is shown on the map of the subdivision.
5. The subdivision is shown on the map of the subdivision.
6. The subdivision is shown on the map of the subdivision.
7. The subdivision is shown on the map of the subdivision.
8. The subdivision is shown on the map of the subdivision.
9. The subdivision is shown on the map of the subdivision.
10. The subdivision is shown on the map of the subdivision.
11. The subdivision is shown on the map of the subdivision.
12. The subdivision is shown on the map of the subdivision.
13. The subdivision is shown on the map of the subdivision.
14. The subdivision is shown on the map of the subdivision.
15. The subdivision is shown on the map of the subdivision.



THIS PLAN SHALL BE FILED WITH THE LAND RECORDS OF MONTGOMERY COUNTY, MARYLAND, ON MAY 2, 2003.

WITNER ASSOCIATES

PREPARED FOR:  
 DOUGLAS  
 CONSTRUCTION GROUP LLC  
 1000 WOODBURN AVENUE  
 POTOMAC, MD 20854  
 TEL: 301-983-8602  
 FAX: 301-983-5354

SCALE: 1" = 200'

NO. SHEET: 206.02D/NW.4  
 SHEETS: PAGE 41 OF 41  
 COUNTY MAP

**PRELIMINARY SUBDIVISION PLAN**

**LOTS 85 & 86 - BLOCK 18**

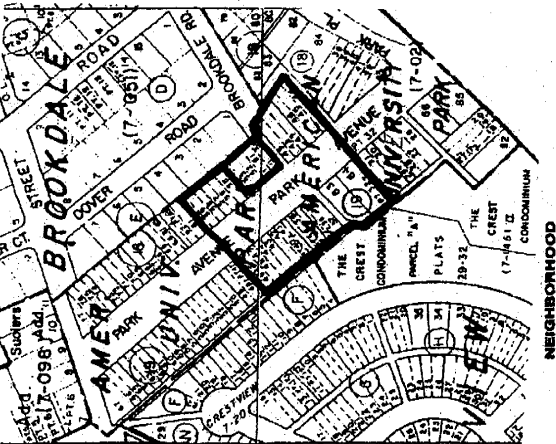
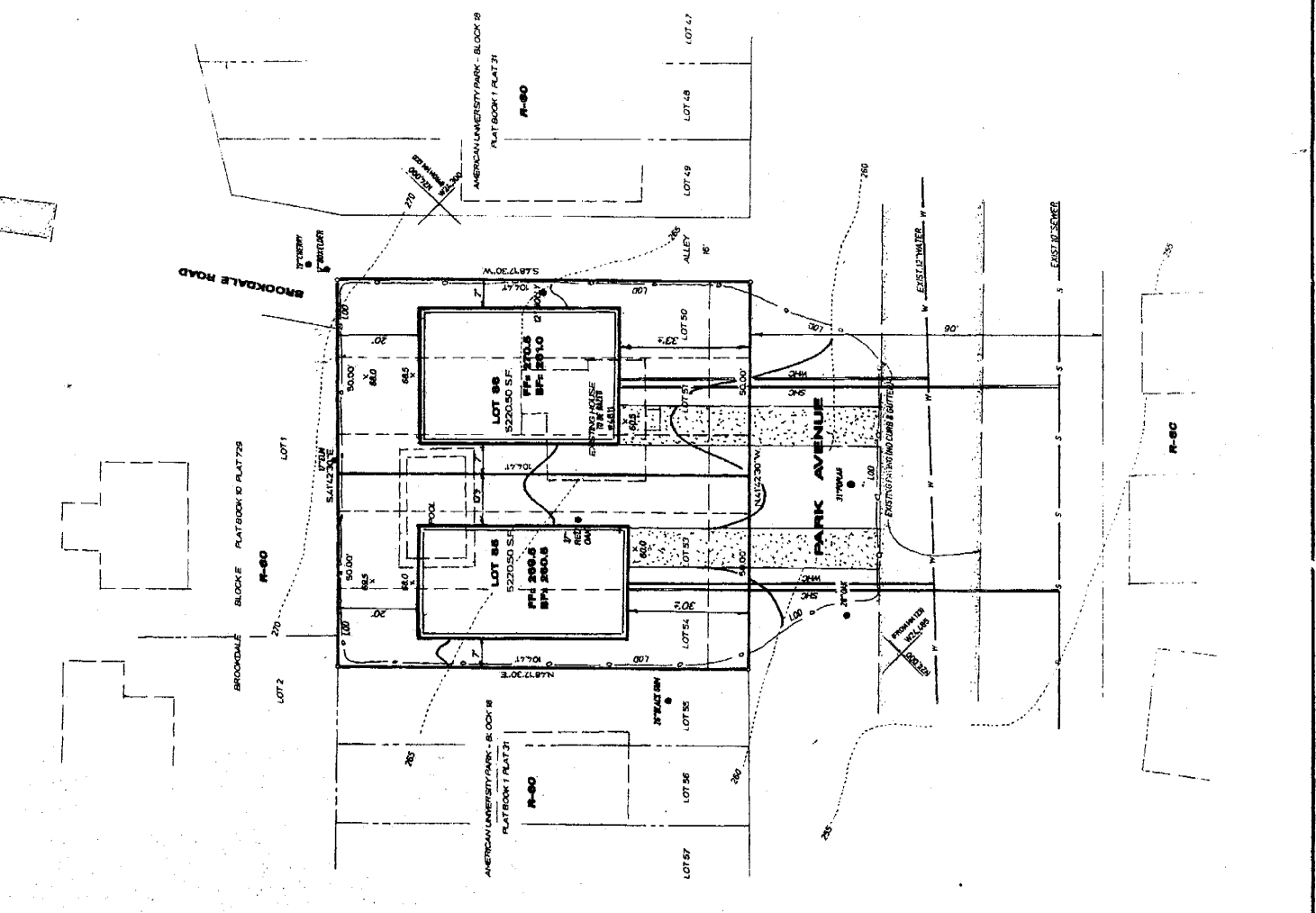
A REVISION OF LOTS 80 THROUGH 84 - BLOCK 18

**AMERICAN UNIVERSITY PARK**

BETHESDA (7th) ELECTION DISTRICT  
 MONTGOMERY COUNTY, MARYLAND

**WITNER ASSOCIATES, LLC**  
 Land Surveying, Land Planning & Design  
 334-A Hagerstown Drive, Rockville, MD 20850  
 TEL: (301) 991-8888 Fax: (301) 991-8860

DATE: MAY 2003  
 SHEET NO: 0218 A  
 SHEET NO: 1 of 1



**SURVEYOR'S CERTIFICATE**

I HEREBY CERTIFY THAT THE INFORMATION AS NOTED HEREON IS CORRECT.

DATE: 5/1/2003  
 [Signature]  
 PROFESSIONAL LAND SURVEYOR  
 MARYLAND REGISTRATION NO. 20868