

Item #8



THE MARYLAND-NATIONAL CAPITAL PARK AND PLANNING COMMISSION

MEMORANDUM

DATE: January 2, 2004
TO: Montgomery County Planning Board
FROM: A. Malcolm Shaneman
Development Review Division
(301) 495-4587
SUBJECT: Informational Maps for Subdivision Items on the
Planning Board's Agenda for January 08, 2004.

Attached are copies of plan drawings for Item #06, #07, #08, and #10. These subdivision items are scheduled for Planning Board consideration on January 08, 2004. The items are further identified as follows:

Agenda Item #06 -Preliminary Plan 1-84246A
Proposed World Headquarters for
Seventh-Day Adventists Church

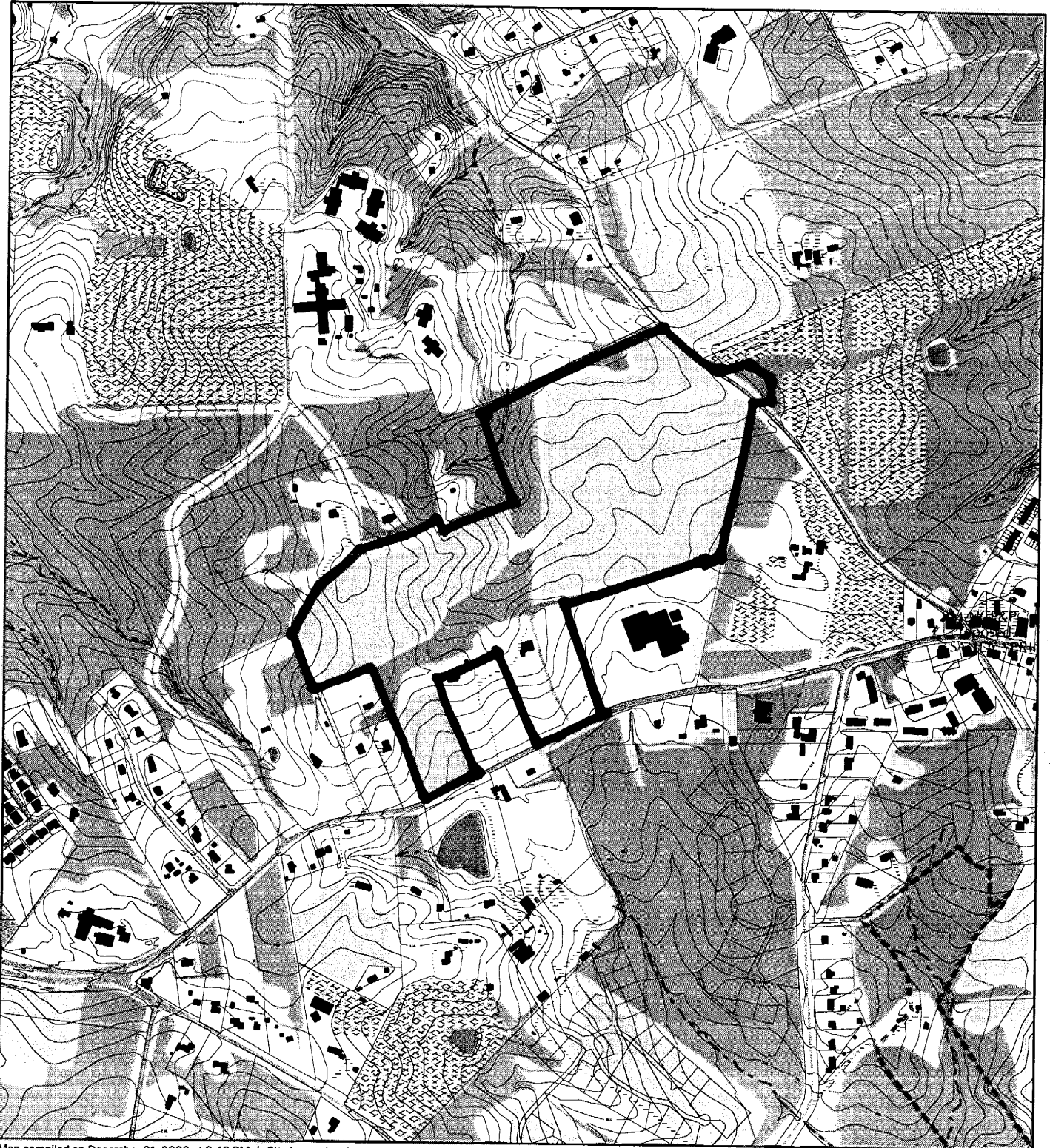
Agenda Item #07 -Preliminary Plan 1-04014
American University Park

Agenda Item #08 -Preliminary Plan 1-04011
Meadowsweet

Agenda Item #10 -Preliminary Plan 1-04001
Edwards Property

Attachment

MEADOWSWEET (1-04011)



Map compiled on December 31, 2003 at 3:48 PM | Site located on base sheet no - 224NW02

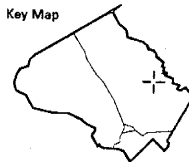
NOTICE

The planimetric, property, and topographic information shown on this map is based on copyrighted Map Products from the Montgomery County Department of Park and Planning of the Maryland-National Capital Park and Planning Commission, and may not be copied or reproduced without written permission from M-NCPPC.

Property lines are compiled by adjusting the property lines to topography created from aerial photography and should not be interpreted as actual field surveys. Planimetric features were compiled from 1:14400 scale aerial photography using stereo photogrammetric methods.

This map is created from a variety of data sources, and may not reflect the most current conditions in any one location and may not be completely accurate or up to date. All map features are approximately within five feet of their true location. This map may not be the same as a map of the same area plotted at an earlier time as the data is continuously updated. Use of this map, other than for general planning purposes is not recommended. - Copyright 1998

Key Map



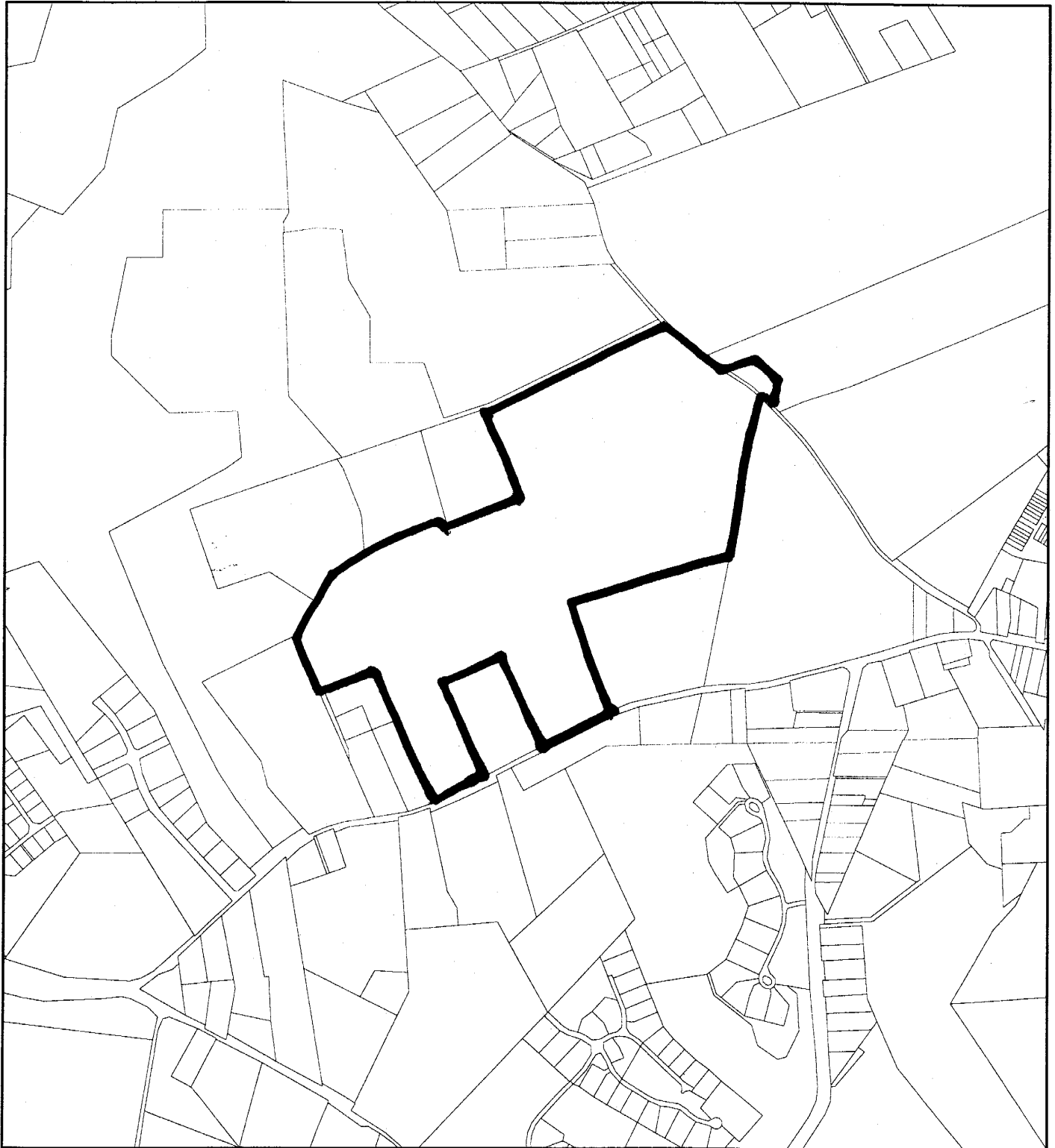
N



Research & Technology Center
0 800

1 : 9600

MEADOWSWEET (1-04011)



Map compiled on December 31, 2003 at 3:42 PM | Site located on base sheet no - 224NW02

NOTICE

The planimetric, property, and topographic information shown on this map is based on copyrighted Map Products from the Montgomery County Department of Park and Planning of the Maryland -National Capital Park and Planning Commission, and may not be copied or reproduced without written permission from M-NCPPC.

Property lines are compiled by adjusting the property lines to topography created from aerial photography and should not be interpreted as actual field surveys. Planimetric features were compiled from 1:14400 scale aerial photography using stereo photogrammetric methods.

This map is created from a variety of data sources, and may not reflect the most current conditions in any one location and may not be completely accurate or up to date. All map features are approximately within five feet of their true location. This map may not be the same as a map of the same area plotted at an earlier time as the data is continuously updated. Use of this map, other than for general planning purposes is not recommended. - Copyright 1998

Key Map

