

Item #7

M-NCPPC



MONTGOMERY COUNTY DEPARTMENT OF PARK AND PLANNING

THE MARYLAND-NATIONAL CAPITAL
PARK AND PLANNING COMMISSION

8787 Georgia Avenue
Silver Spring, Maryland 20910-3760
301-495-4500, www.mncppc.org

M E M O R A N D U M

DATE: January 23, 2004
TO: Montgomery County Planning Board
FROM: A. Malcolm Shaneman
Development Review Division
(301) 495-4587
SUBJECT: Informational Maps for Subdivision Items on the
Planning Board's Agenda for January 29, 2004.

Attached are copies of plan drawings for Item #05, #07, #08, #09 and #10. These subdivision items are scheduled for Planning Board consideration on January 29, 2004. The items are further identified as follows:

Agenda Item #05 -Preliminary Plan 1-60232A
Montrose Crossing

Agenda Item #07 -Preliminary Plan 1-03080
Ancient Oak West

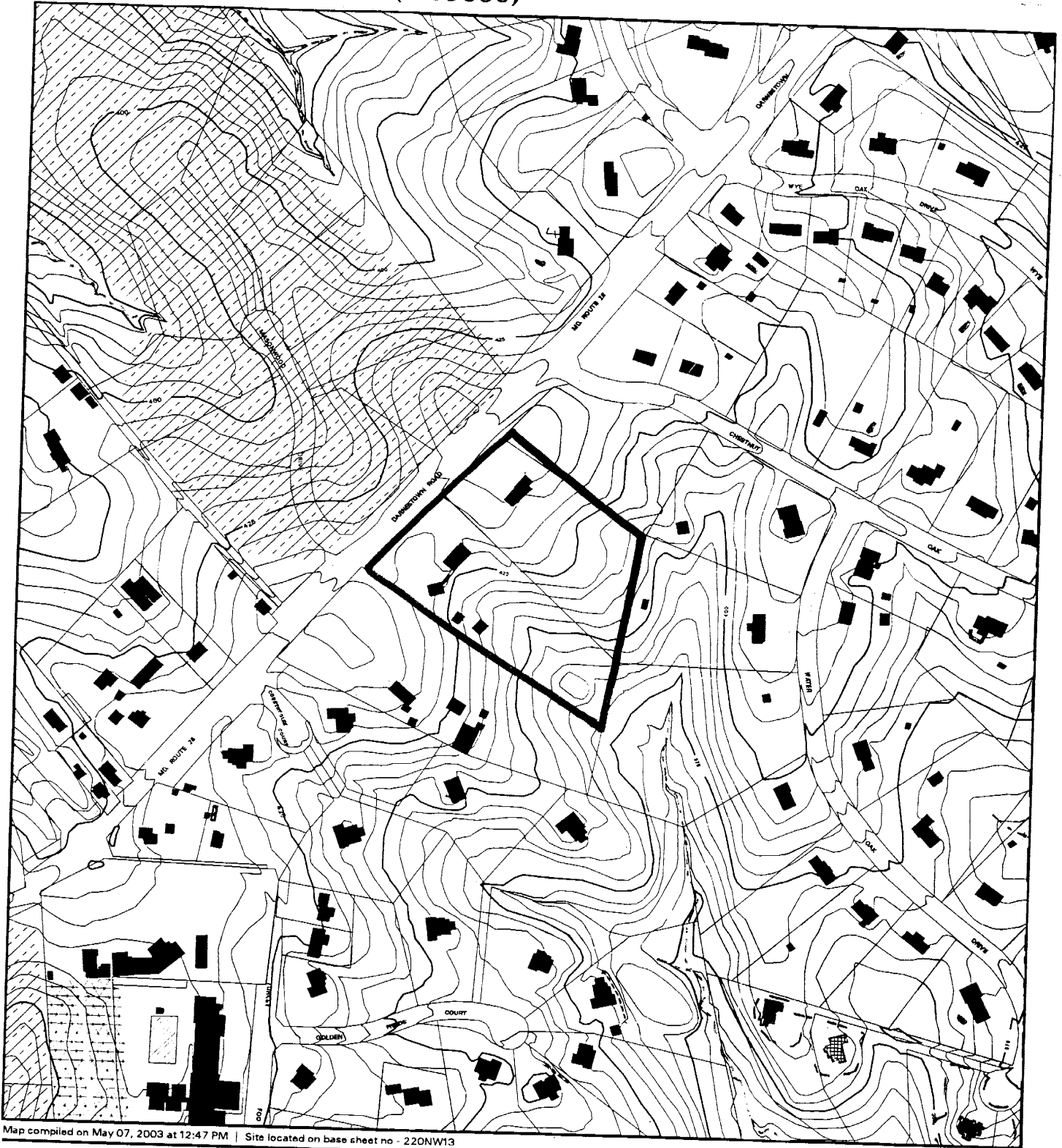
Agenda Item #08 -Preliminary Plan 1-02111
Four Chimney Estates

Agenda Item #09 -Preliminary Plan 1-04038
Liberty Grove

Agenda Item #10 -Pre-Preliminary Plan 7-04013
Chevy Chase Section 1A

Attachment

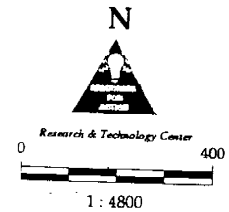
VICINITY MAP FOR
ANCIENT OAK WEST (1-03080)



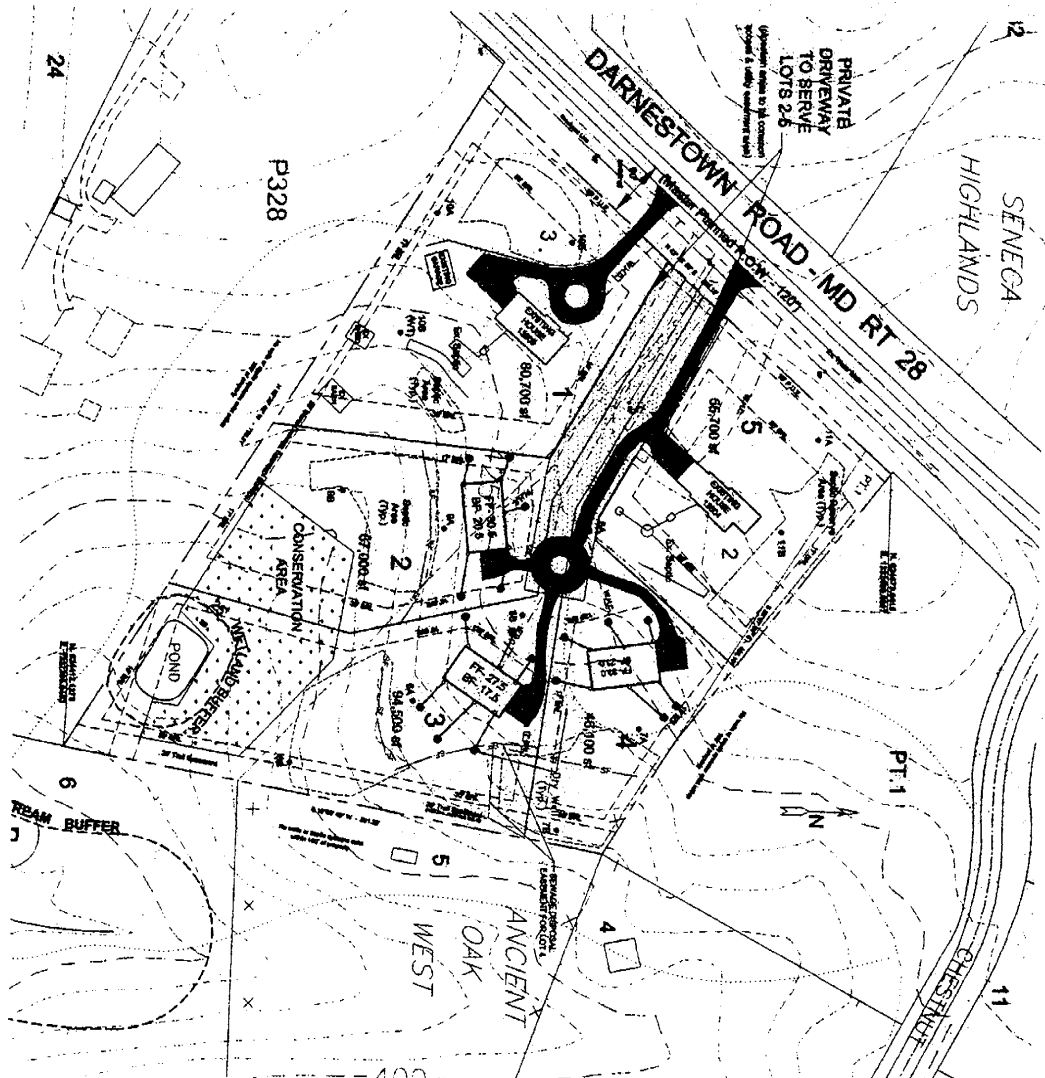
Map compiled on May 07, 2003 at 12:47 PM | Site located on base sheet no - 220NW13

NOTICE

The planimetric, property, and topographic information shown on this map is based on copyrighted Map Products from the Montgomery County Department of Park and Planning of the Maryland -National Capital Park and Planning Commission, and may not be copied or reproduced without written permission from M-NCPPC.
Property lines are compiled by adjusting the property lines to topography created from aerial photography and should not be interpreted as actual field surveys. Planimetric features were compiled from 1:14400 scale aerial photography using stereo photogrammetric methods.
This map is created from a variety of data sources, and may not reflect the most current conditions in any one location and may not be completely accurate or up to date. All map features are approximately within five feet of their true location. This map may not be the same as a map of the same area plotted at an earlier time as the data is continuously updated. Use of this map, other than for general planning purposes is not recommended. - Copyright 1998



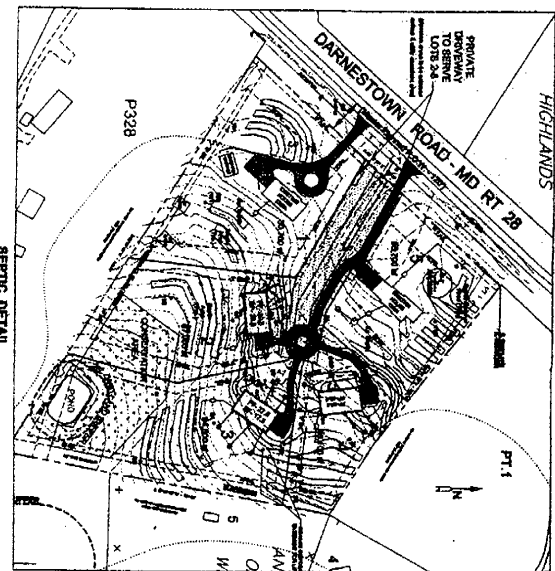
M-NCPPC



SEWAGE DISPOSAL SYSTEM - DESIGN DATA:

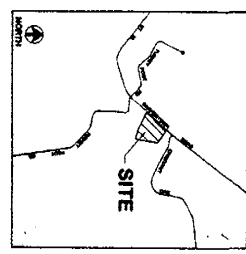
LOT #	Area (sq. ft.)	Depth of Sewer (ft.)	Flow (gpd)	Flow (mgd)	Flow (cfs)	Flow (gpm)	Flow (in. dia.)	Flow (ft. dia.)	Flow (in. dia.)	Flow (ft. dia.)	Flow (in. dia.)	Flow (ft. dia.)
1	100	3.5	117	0.001	0.000	0.000	1.5	1.5	1.5	1.5	1.5	1.5
2	100	3.5	117	0.001	0.000	0.000	1.5	1.5	1.5	1.5	1.5	1.5
3	100	3.5	117	0.001	0.000	0.000	1.5	1.5	1.5	1.5	1.5	1.5
4	100	3.5	117	0.001	0.000	0.000	1.5	1.5	1.5	1.5	1.5	1.5
5	100	3.5	117	0.001	0.000	0.000	1.5	1.5	1.5	1.5	1.5	1.5
6	100	3.5	117	0.001	0.000	0.000	1.5	1.5	1.5	1.5	1.5	1.5

NOTE:
 1. FUTURE SEPTIC BER. ASSESSMENTS FOR LOTS ONE AND FIVE REQUIRE AN EFFLUENT PUMP.
 2. EXISTING WELL ON LOT FIVE MUST BE ABANDONED PRIOR TO RECORD PLAT APPROVAL.



- NOTES:**
- AREA OF PROPERTY - 7.26 ac
 - EXISTING ZONING - R-200
 - ESTIMATED LOT SIZE - 10,000 SQ FT
 - ESTIMATED LOT DENSITY - 0.10 (1.06 A/C)
 - NUMBER OF LOTS SHOWN ON PLAN - 6
 - SITE TO BE SERVED BY PUBLIC WATER & ON-SITE SEPTIC SYSTEMS
 - EXISTING WATER AND SEWER SERVICE CATEGORIES - W-1, S-4
 - DEVELOPMENT STANDARDS:

CONTRACTOR:
 NICHOLAS D. & V.A. PETRUCCI
 13808 DARNESTOWN ROAD
 GAITHERSBURG, MD 20878
 (301) 946-2170



**PRELIMINARY PLAN
 ANCIENT OAK WEST
 Montgomery County, Maryland**

B&A Seanning & Associates, Inc.
 Land Planning Consultants
 10000 Old Columbia Road
 Columbia, MD 21046
 (301) 946-0200

date: February 2003
scale: 1" = 60'



DATE	DESCRIPTION

NOTICE:
 1. Existing water and sewer lines are shown for information only. The location of these lines is not guaranteed.
 2. Existing water and sewer lines are shown for information only. The location of these lines is not guaranteed.
 3. Existing water and sewer lines are shown for information only. The location of these lines is not guaranteed.
 4. Existing water and sewer lines are shown for information only. The location of these lines is not guaranteed.
 5. Existing water and sewer lines are shown for information only. The location of these lines is not guaranteed.
 6. Existing water and sewer lines are shown for information only. The location of these lines is not guaranteed.
 7. Existing water and sewer lines are shown for information only. The location of these lines is not guaranteed.
 8. Existing water and sewer lines are shown for information only. The location of these lines is not guaranteed.
 9. Existing water and sewer lines are shown for information only. The location of these lines is not guaranteed.
 10. Existing water and sewer lines are shown for information only. The location of these lines is not guaranteed.