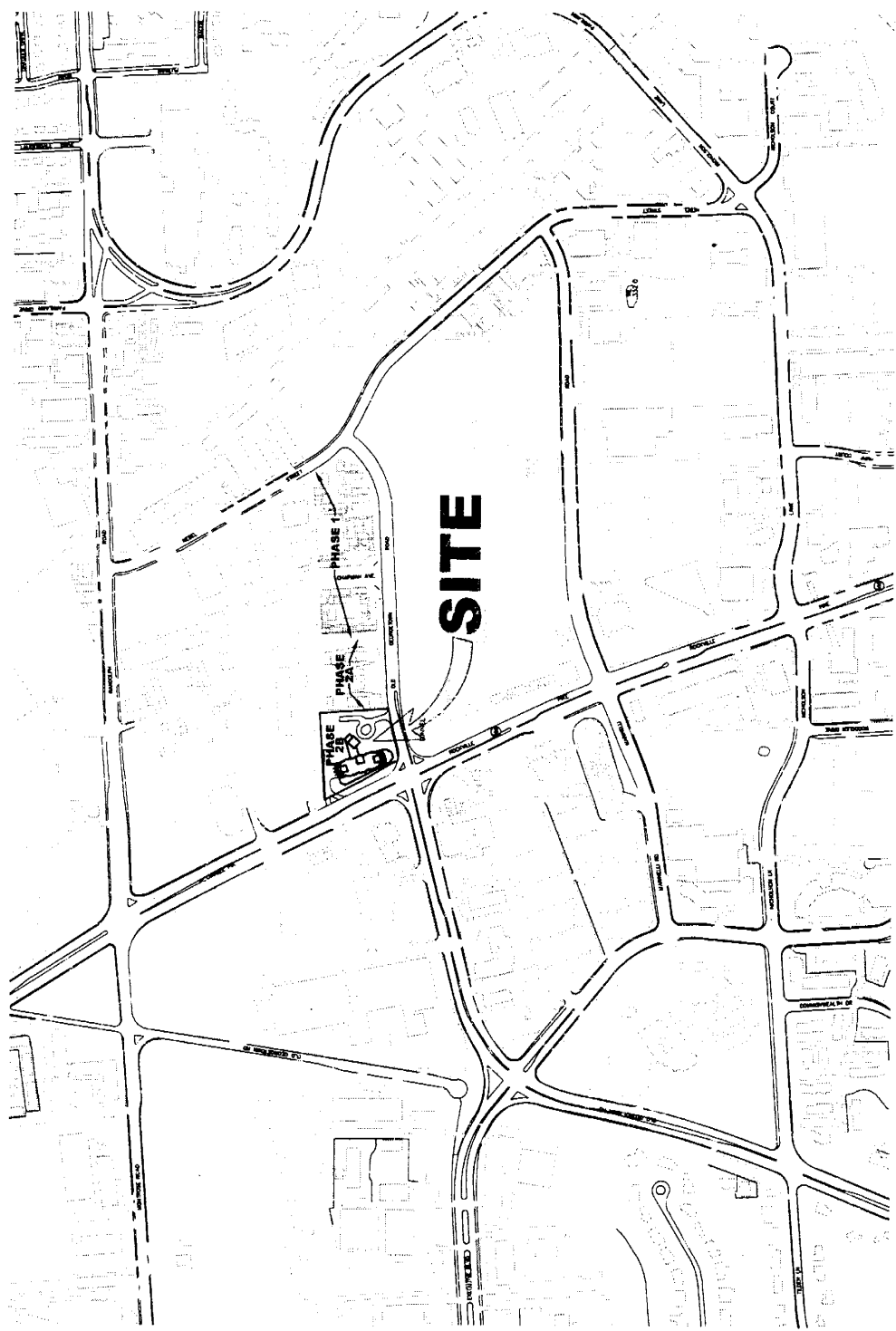


**SURROUNDING
AREA MAP**

SA-1

WHITE FLINT PLACE
North Bethesda, Maryland

DATE	
BY	
CHECKED BY	
SCALE	
PROJECT NO.	
DATE PLOTTED	



© 2000 White Flint Place, Inc. 1/10/2000 10:43:31 AM ET

LEONARD DONOHUE
ARCHITECTS
1770 Wisconsin Avenue, N.W.
Washington, D.C. 20007
Tel: (202) 331-1100
Fax: (202) 331-1101

White Flint Place
1770 Wisconsin Avenue, N.W.
Washington, D.C. 20007
Tel: (202) 331-1100
Fax: (202) 331-1101

White Flint Place
1770 Wisconsin Avenue, N.W.
Washington, D.C. 20007
Tel: (202) 331-1100
Fax: (202) 331-1101

WHITE BLUNT PLACE
North Bethesda, Maryland



Donohoe & Associates, Inc.
10110 Woodmont Road, Suite 100
North Bethesda, MD 20854
Phone: 301.714.1000
Fax: 301.714.1001
www.donohoe.com

Phase 1
(Subject to DP D-726)

Phase 2A
(Subject to DP D-726)

Phase 2B
(Subject to DP D-726)

16-18 STORY RESIDENTIAL W/GROUND FLOOR RETAIL

ROCKVILLE PIKE

OLD GEORGETOWN ROAD

10' BUFFER ZONE ROAD & ADJACENT LOT BY 10 FEET

DEVELOPMENT PLAN AMENDMENT SUMMARY

PHASE	APPROXIMATE GROUND COVERED	APPROXIMATE CONCRETE	APPROXIMATE TOTAL FLOOR AREA	APPROXIMATE TOTAL VOLUME	APPROXIMATE TOTAL VOLUME	APPROXIMATE TOTAL VOLUME	APPROXIMATE TOTAL VOLUME	APPROXIMATE TOTAL VOLUME	APPROXIMATE TOTAL VOLUME	APPROXIMATE TOTAL VOLUME	APPROXIMATE TOTAL VOLUME	APPROXIMATE TOTAL VOLUME
PHASE 1	1,000 SF	1,000 SF	100,000 SF	1,000,000 CU FT	1,000,000 CU FT	1,000,000 CU FT	1,000,000 CU FT	1,000,000 CU FT	1,000,000 CU FT	1,000,000 CU FT	1,000,000 CU FT	1,000,000 CU FT
PHASE 2A	2,000 SF	2,000 SF	200,000 SF	2,000,000 CU FT	2,000,000 CU FT	2,000,000 CU FT	2,000,000 CU FT	2,000,000 CU FT	2,000,000 CU FT	2,000,000 CU FT	2,000,000 CU FT	2,000,000 CU FT
PHASE 2B	3,000 SF	3,000 SF	300,000 SF	3,000,000 CU FT	3,000,000 CU FT	3,000,000 CU FT	3,000,000 CU FT	3,000,000 CU FT	3,000,000 CU FT	3,000,000 CU FT	3,000,000 CU FT	3,000,000 CU FT
TOTAL	6,000 SF	6,000 SF	600,000 SF	6,000,000 CU FT	6,000,000 CU FT	6,000,000 CU FT	6,000,000 CU FT	6,000,000 CU FT	6,000,000 CU FT	6,000,000 CU FT	6,000,000 CU FT	6,000,000 CU FT

DEVELOPMENT PLAN AMENDMENT SUMMARY

PHASE	APPROXIMATE GROUND COVERED	APPROXIMATE CONCRETE	APPROXIMATE TOTAL FLOOR AREA	APPROXIMATE TOTAL VOLUME	APPROXIMATE TOTAL VOLUME	APPROXIMATE TOTAL VOLUME	APPROXIMATE TOTAL VOLUME	APPROXIMATE TOTAL VOLUME	APPROXIMATE TOTAL VOLUME	APPROXIMATE TOTAL VOLUME	APPROXIMATE TOTAL VOLUME
PHASE 1	1,000 SF	1,000 SF	100,000 SF	1,000,000 CU FT	1,000,000 CU FT	1,000,000 CU FT	1,000,000 CU FT	1,000,000 CU FT	1,000,000 CU FT	1,000,000 CU FT	1,000,000 CU FT
PHASE 2A	2,000 SF	2,000 SF	200,000 SF	2,000,000 CU FT	2,000,000 CU FT	2,000,000 CU FT	2,000,000 CU FT	2,000,000 CU FT	2,000,000 CU FT	2,000,000 CU FT	2,000,000 CU FT
PHASE 2B	3,000 SF	3,000 SF	300,000 SF	3,000,000 CU FT	3,000,000 CU FT	3,000,000 CU FT	3,000,000 CU FT	3,000,000 CU FT	3,000,000 CU FT	3,000,000 CU FT	3,000,000 CU FT
TOTAL	6,000 SF	6,000 SF	600,000 SF	6,000,000 CU FT	6,000,000 CU FT	6,000,000 CU FT	6,000,000 CU FT	6,000,000 CU FT	6,000,000 CU FT	6,000,000 CU FT	6,000,000 CU FT

DEVELOPMENT PLAN AMENDMENT SUMMARY

PHASE	APPROXIMATE GROUND COVERED	APPROXIMATE CONCRETE	APPROXIMATE TOTAL FLOOR AREA	APPROXIMATE TOTAL VOLUME	APPROXIMATE TOTAL VOLUME	APPROXIMATE TOTAL VOLUME	APPROXIMATE TOTAL VOLUME	APPROXIMATE TOTAL VOLUME	APPROXIMATE TOTAL VOLUME	APPROXIMATE TOTAL VOLUME	APPROXIMATE TOTAL VOLUME
PHASE 1	1,000 SF	1,000 SF	100,000 SF	1,000,000 CU FT	1,000,000 CU FT	1,000,000 CU FT	1,000,000 CU FT	1,000,000 CU FT	1,000,000 CU FT	1,000,000 CU FT	1,000,000 CU FT
PHASE 2A	2,000 SF	2,000 SF	200,000 SF	2,000,000 CU FT	2,000,000 CU FT	2,000,000 CU FT	2,000,000 CU FT	2,000,000 CU FT	2,000,000 CU FT	2,000,000 CU FT	2,000,000 CU FT
PHASE 2B	3,000 SF	3,000 SF	300,000 SF	3,000,000 CU FT	3,000,000 CU FT	3,000,000 CU FT	3,000,000 CU FT	3,000,000 CU FT	3,000,000 CU FT	3,000,000 CU FT	3,000,000 CU FT
TOTAL	6,000 SF	6,000 SF	600,000 SF	6,000,000 CU FT	6,000,000 CU FT	6,000,000 CU FT	6,000,000 CU FT	6,000,000 CU FT	6,000,000 CU FT	6,000,000 CU FT	6,000,000 CU FT

DEVELOPMENT PLAN AMENDMENT SUMMARY

PHASE	APPROXIMATE GROUND COVERED	APPROXIMATE CONCRETE	APPROXIMATE TOTAL FLOOR AREA	APPROXIMATE TOTAL VOLUME	APPROXIMATE TOTAL VOLUME	APPROXIMATE TOTAL VOLUME	APPROXIMATE TOTAL VOLUME	APPROXIMATE TOTAL VOLUME	APPROXIMATE TOTAL VOLUME	APPROXIMATE TOTAL VOLUME	APPROXIMATE TOTAL VOLUME
PHASE 1	1,000 SF	1,000 SF	100,000 SF	1,000,000 CU FT	1,000,000 CU FT	1,000,000 CU FT	1,000,000 CU FT	1,000,000 CU FT	1,000,000 CU FT	1,000,000 CU FT	1,000,000 CU FT
PHASE 2A	2,000 SF	2,000 SF	200,000 SF	2,000,000 CU FT	2,000,000 CU FT	2,000,000 CU FT	2,000,000 CU FT	2,000,000 CU FT	2,000,000 CU FT	2,000,000 CU FT	2,000,000 CU FT
PHASE 2B	3,000 SF	3,000 SF	300,000 SF	3,000,000 CU FT	3,000,000 CU FT	3,000,000 CU FT	3,000,000 CU FT	3,000,000 CU FT	3,000,000 CU FT	3,000,000 CU FT	3,000,000 CU FT
TOTAL	6,000 SF	6,000 SF	600,000 SF	6,000,000 CU FT	6,000,000 CU FT	6,000,000 CU FT	6,000,000 CU FT	6,000,000 CU FT	6,000,000 CU FT	6,000,000 CU FT	6,000,000 CU FT

DEVELOPMENT PLAN AMENDMENT SUMMARY

PHASE	APPROXIMATE GROUND COVERED	APPROXIMATE CONCRETE	APPROXIMATE TOTAL FLOOR AREA	APPROXIMATE TOTAL VOLUME	APPROXIMATE TOTAL VOLUME	APPROXIMATE TOTAL VOLUME	APPROXIMATE TOTAL VOLUME	APPROXIMATE TOTAL VOLUME	APPROXIMATE TOTAL VOLUME	APPROXIMATE TOTAL VOLUME	APPROXIMATE TOTAL VOLUME
PHASE 1	1,000 SF	1,000 SF	100,000 SF	1,000,000 CU FT	1,000,000 CU FT	1,000,000 CU FT	1,000,000 CU FT	1,000,000 CU FT	1,000,000 CU FT	1,000,000 CU FT	1,000,000 CU FT
PHASE 2A	2,000 SF	2,000 SF	200,000 SF	2,000,000 CU FT	2,000,000 CU FT	2,000,000 CU FT	2,000,000 CU FT	2,000,000 CU FT	2,000,000 CU FT	2,000,000 CU FT	2,000,000 CU FT
PHASE 2B	3,000 SF	3,000 SF	300,000 SF	3,000,000 CU FT	3,000,000 CU FT	3,000,000 CU FT	3,000,000 CU FT	3,000,000 CU FT	3,000,000 CU FT	3,000,000 CU FT	3,000,000 CU FT
TOTAL	6,000 SF	6,000 SF	600,000 SF	6,000,000 CU FT	6,000,000 CU FT	6,000,000 CU FT	6,000,000 CU FT	6,000,000 CU FT	6,000,000 CU FT	6,000,000 CU FT	6,000,000 CU FT

DEVELOPMENT PLAN AMENDMENT SUMMARY

PHASE	APPROXIMATE GROUND COVERED	APPROXIMATE CONCRETE	APPROXIMATE TOTAL FLOOR AREA	APPROXIMATE TOTAL VOLUME	APPROXIMATE TOTAL VOLUME	APPROXIMATE TOTAL VOLUME	APPROXIMATE TOTAL VOLUME	APPROXIMATE TOTAL VOLUME	APPROXIMATE TOTAL VOLUME	APPROXIMATE TOTAL VOLUME	APPROXIMATE TOTAL VOLUME
PHASE 1	1,000 SF	1,000 SF	100,000 SF	1,000,000 CU FT	1,000,000 CU FT	1,000,000 CU FT	1,000,000 CU FT	1,000,000 CU FT	1,000,000 CU FT	1,000,000 CU FT	1,000,000 CU FT
PHASE 2A	2,000 SF	2,000 SF	200,000 SF	2,000,000 CU FT	2,000,000 CU FT	2,000,000 CU FT	2,000,000 CU FT	2,000,000 CU FT	2,000,000 CU FT	2,000,000 CU FT	2,000,000 CU FT
PHASE 2B	3,000 SF	3,000 SF	300,000 SF	3,000,000 CU FT	3,000,000 CU FT	3,000,000 CU FT	3,000,000 CU FT	3,000,000 CU FT	3,000,000 CU FT	3,000,000 CU FT	3,000,000 CU FT
TOTAL	6,000 SF	6,000 SF	600,000 SF	6,000,000 CU FT	6,000,000 CU FT	6,000,000 CU FT	6,000,000 CU FT	6,000,000 CU FT	6,000,000 CU FT	6,000,000 CU FT	6,000,000 CU FT

OFFICE OF ZONING & ADMINISTRATIVE HEARINGS CERTIFICATION

This is a true and correct copy of the original plan as shown to the undersigned on the date indicated below.

DATE: 10/15/2010

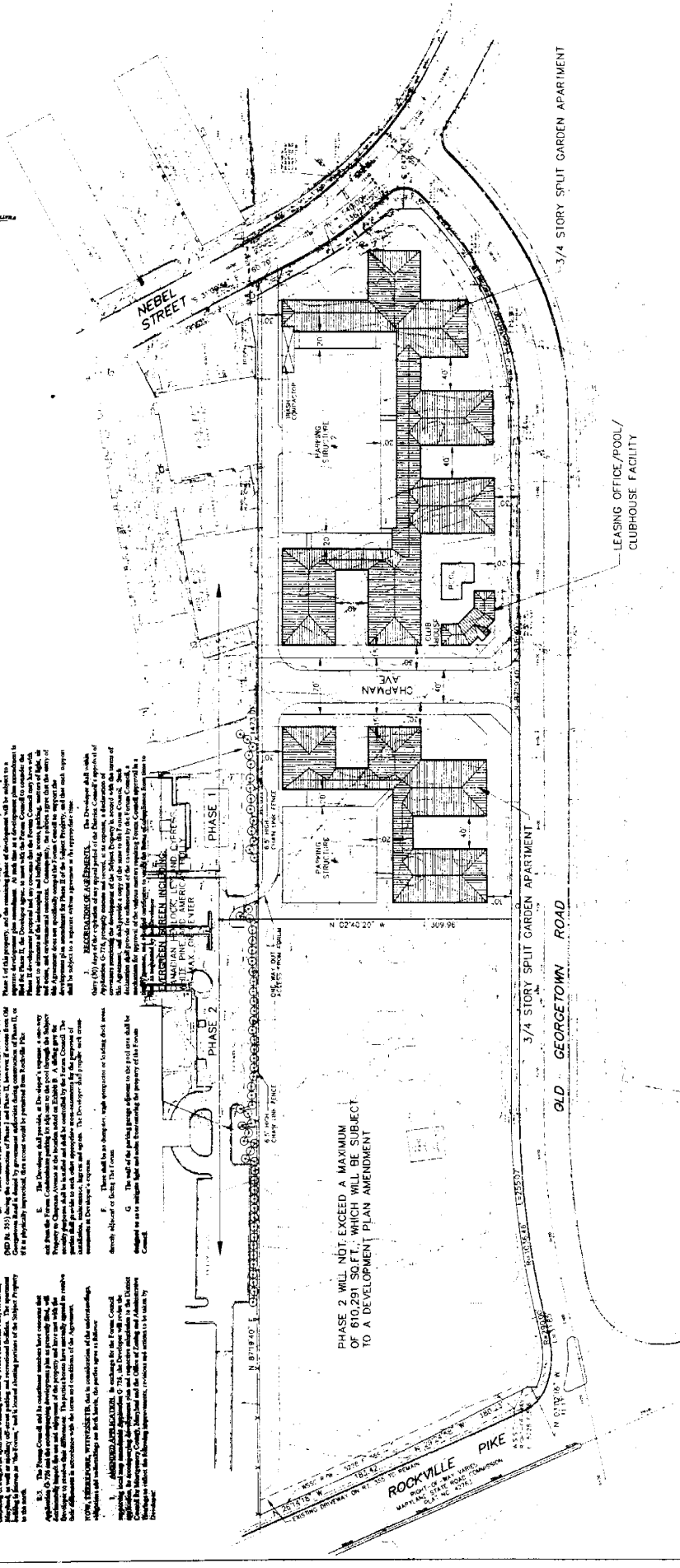
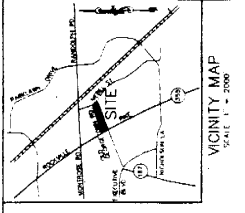
BY: [Signature]

TITLE: [Title]

MIXED USE DEVELOPMENT ELECTION DISTRICT NO. 4 MONTGOMERY COUNTY, MARYLAND MONTGOMERY COUNTY DEPARTMENT OF PUBLIC WORKS 1100 CHICAGO DRIVE, SUITE 300 ROCKVILLE, MARYLAND 20850

DEVELOPMENT PLAN

MIXED USE DEVELOPMENT ELECTION DISTRICT NO. 4 MONTGOMERY COUNTY, MARYLAND MONTGOMERY COUNTY DEPARTMENT OF PUBLIC WORKS 1100 CHICAGO DRIVE, SUITE 300 ROCKVILLE, MARYLAND 20850



GENERAL NOTES
1. ALL AREAS NOT SHOWN SHALL BE CONSIDERED TO BE UNDEVELOPED.
2. PLANNING SHALL BE PROVIDED IN ACCORDANCE WITH THE REQUIREMENTS OF THE MONTGOMERY COUNTY ZONING REGULATIONS.
3. THIS DEVELOPMENT IS SUBJECT TO AN AGREEMENT BETWEEN THE APPLICANT AND THE PLANNING COMMISSION.

Table with 3 columns: PHASE, LOT, CHAMPAIN AVE. Rows include PHASE 1, PHASE 2, and TOTAL. Values include 76,172 SF, 149,473 SF, 22,357 SF, 20,274 SF, and 487,441 SF.

MISCELLANEOUS
1. The developer shall be responsible for all expenses related to the development of this site...
2. The developer shall be responsible for all expenses related to the development of this site...

AGREEMENT
1. The developer shall be responsible for all expenses related to the development of this site...
2. The developer shall be responsible for all expenses related to the development of this site...

RECREATIONAL SPACE
REQUIRED: PHASE 1 66,402 SF, PHASE 2 0 SF, TOTAL 66,402 SF.
PROVIDED: PHASE 1 66,402 SF, PHASE 2 0 SF, TOTAL 66,402 SF.

RECREATIONAL SPACE
REQUIRED: PHASE 1 66,402 SF, PHASE 2 0 SF, TOTAL 66,402 SF.
PROVIDED: PHASE 1 66,402 SF, PHASE 2 0 SF, TOTAL 66,402 SF.

Table with 2 main columns: PUBLIC USE SPACE and ACTIVE/PASSIVE RECREATIONAL SPACE. It details required vs. provided area for various phases and total site requirements.

DEVELOPMENT SUMMARY table with columns: DEVELOPMENT TYPE, PHASE 1 RANGE, PHASE 2 RANGE, TOTAL. Rows include Residential Units, Office Space, and Total Area.

NOTE: THE AREA CALCULATIONS ARE BASED ON THE LSP SURVEY BY THE TOTAL SITE AREA OF 465,441 SF.