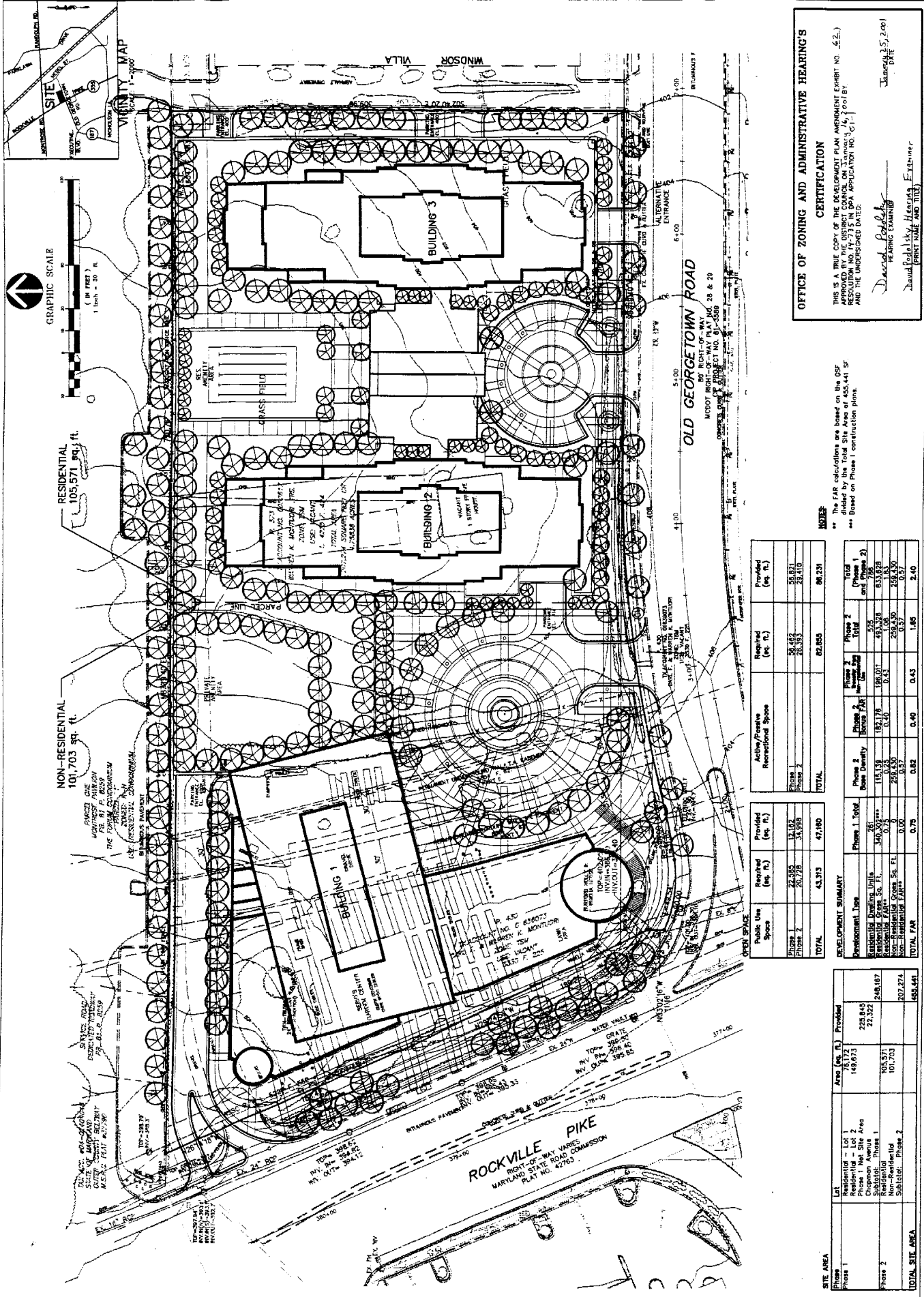


DEVELOPMENT PLAN
AMENDMENT
(REFLECTING BY PLAN G-726)

WHITE FLINT PLACE
PROPERTY OF
WARREN K. MONTGOMERY, TRUSTEE
CARL F. AND WARREN F. MONTGOMERY
LIBERTY 3300 FLOOR 225
MONTGOMERY DISTRICT NO. 4
MONTGOMERY COUNTY, MARYLAND

CHANGES MADE BY SURVEYOR, ARCHITECTS & ENGINEERS BY SURVEYOR
DATE: 07/20/2006
PROJECT: 14-7735 IN SPA APPLICATION NO. G-726
DATE: 07/20/2006
DRAWN BY: J. H. HARRIS, JR.
CHECKED BY: J. H. HARRIS, JR.
DATE: 07/20/2006
PROJECT: 14-7735 IN SPA APPLICATION NO. G-726
DATE: 07/20/2006

VIRIA REVISI
1. 07/20/2006
2. 07/20/2006
3. 07/20/2006
4. 07/20/2006
5. 07/20/2006
6. 07/20/2006
7. 07/20/2006
8. 07/20/2006
9. 07/20/2006
10. 07/20/2006
11. 07/20/2006
12. 07/20/2006
13. 07/20/2006
14. 07/20/2006
15. 07/20/2006
16. 07/20/2006
17. 07/20/2006
18. 07/20/2006
19. 07/20/2006
20. 07/20/2006
21. 07/20/2006
22. 07/20/2006
23. 07/20/2006
24. 07/20/2006
25. 07/20/2006
26. 07/20/2006
27. 07/20/2006
28. 07/20/2006
29. 07/20/2006
30. 07/20/2006
31. 07/20/2006
32. 07/20/2006
33. 07/20/2006
34. 07/20/2006
35. 07/20/2006
36. 07/20/2006
37. 07/20/2006
38. 07/20/2006
39. 07/20/2006
40. 07/20/2006
41. 07/20/2006
42. 07/20/2006
43. 07/20/2006
44. 07/20/2006
45. 07/20/2006
46. 07/20/2006
47. 07/20/2006
48. 07/20/2006
49. 07/20/2006
50. 07/20/2006
51. 07/20/2006
52. 07/20/2006
53. 07/20/2006
54. 07/20/2006
55. 07/20/2006
56. 07/20/2006
57. 07/20/2006
58. 07/20/2006
59. 07/20/2006
60. 07/20/2006
61. 07/20/2006
62. 07/20/2006
63. 07/20/2006
64. 07/20/2006
65. 07/20/2006
66. 07/20/2006
67. 07/20/2006
68. 07/20/2006
69. 07/20/2006
70. 07/20/2006
71. 07/20/2006
72. 07/20/2006
73. 07/20/2006
74. 07/20/2006
75. 07/20/2006
76. 07/20/2006
77. 07/20/2006
78. 07/20/2006
79. 07/20/2006
80. 07/20/2006
81. 07/20/2006
82. 07/20/2006
83. 07/20/2006
84. 07/20/2006
85. 07/20/2006
86. 07/20/2006
87. 07/20/2006
88. 07/20/2006
89. 07/20/2006
90. 07/20/2006
91. 07/20/2006
92. 07/20/2006
93. 07/20/2006
94. 07/20/2006
95. 07/20/2006
96. 07/20/2006
97. 07/20/2006
98. 07/20/2006
99. 07/20/2006
100. 07/20/2006



OFFICE OF ZONING AND ADMINISTRATIVE HEARINGS
CERTIFICATION

THIS IS A TRUE COPY OF THE DEVELOPMENT PLAN AMENDMENT EXHIBIT NO. G-726, RESOLUTION NO. 14-7735 IN SPA APPLICATION NO. G-726, AND THE UNDERGROUND DATE: 07/20/2006.

David P. Pappalardo
HEARING EXAMINER
David Pappalardo
DATE: 07/20/2006

NOTES:
* The FAR calculations are based on the OSF
** Based on Phase I construction plans.

Public Use	Phase 1		Phase 2		Phase 3		TOTAL
	Required (sq. ft.)	Provided (sq. ft.)	Required (sq. ft.)	Provided (sq. ft.)	Required (sq. ft.)	Provided (sq. ft.)	
Walking/Recreational Space	26,385	15,176	58,453	58,453	187,176	187,176	272,014
TOTAL	43,313	47,180	62,855	62,855	86,231	86,231	192,279

SITE AREA	Phase 1		Phase 2		TOTAL SITE AREA
	Area (sq. ft.)	Provided	Area (sq. ft.)	Provided	
Phase 1	149,071	223,845	105,571	207,274	465,441
Phase 2	207,274	207,274	101,703	101,703	409,977
TOTAL	356,345	431,119	207,274	308,977	872,601



0 30 60



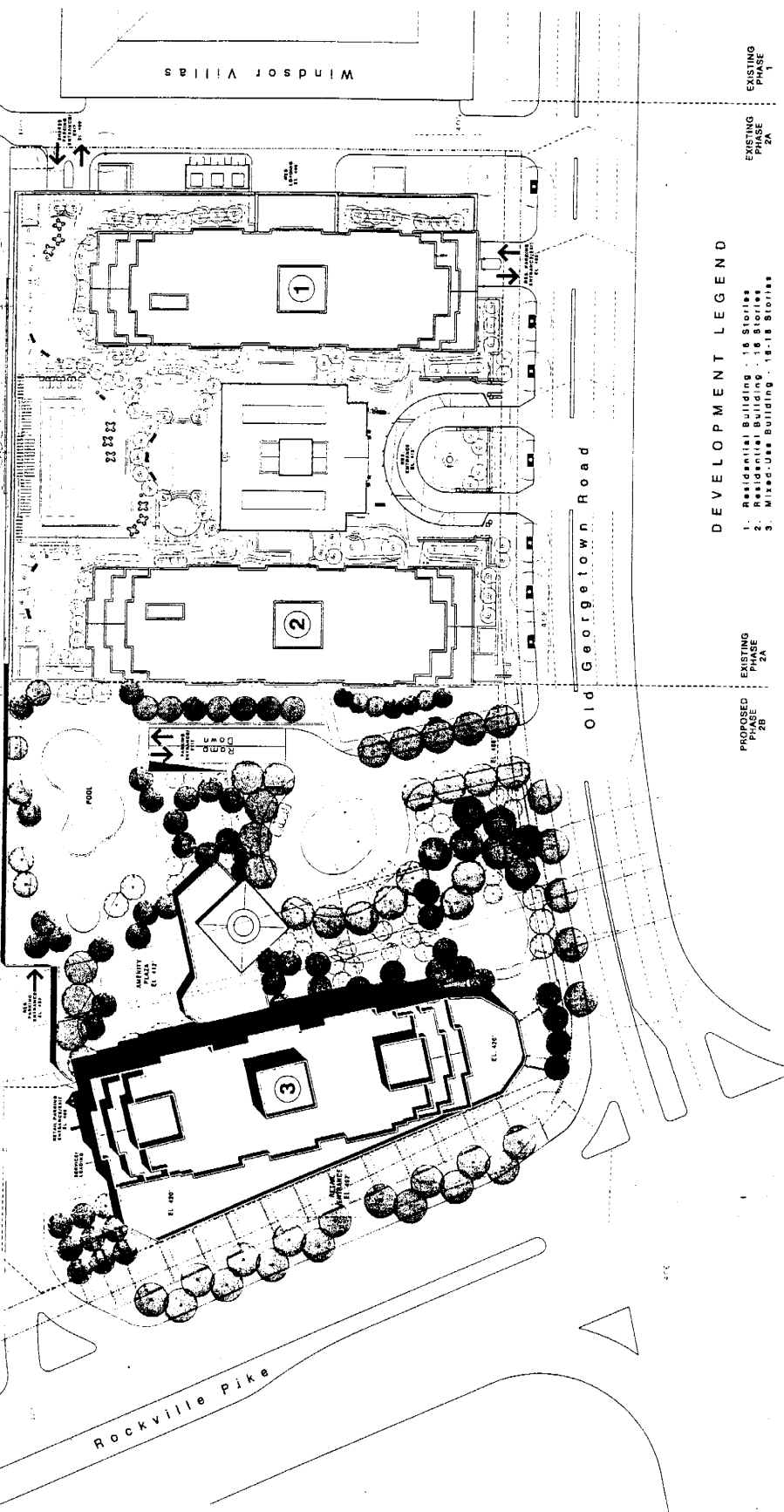
WHITE 2 INT PLAC

PHASE TWO SITE PLAN

Landscape Plan

The Forum Condominium

UNDERGROUND
EASEMENT



DEVELOPMENT LEGEND

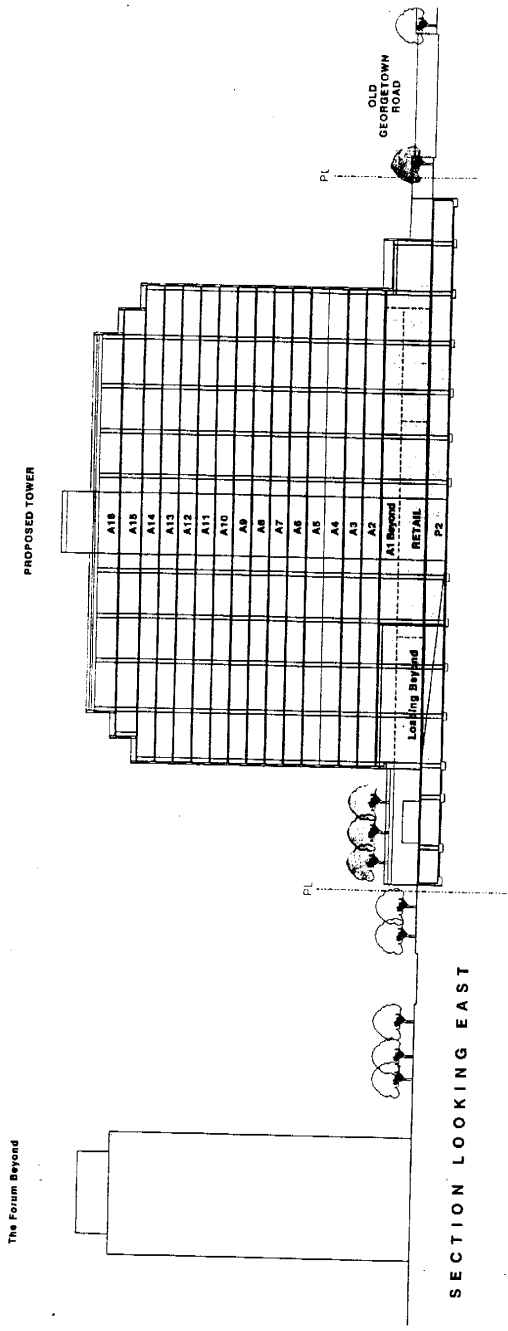
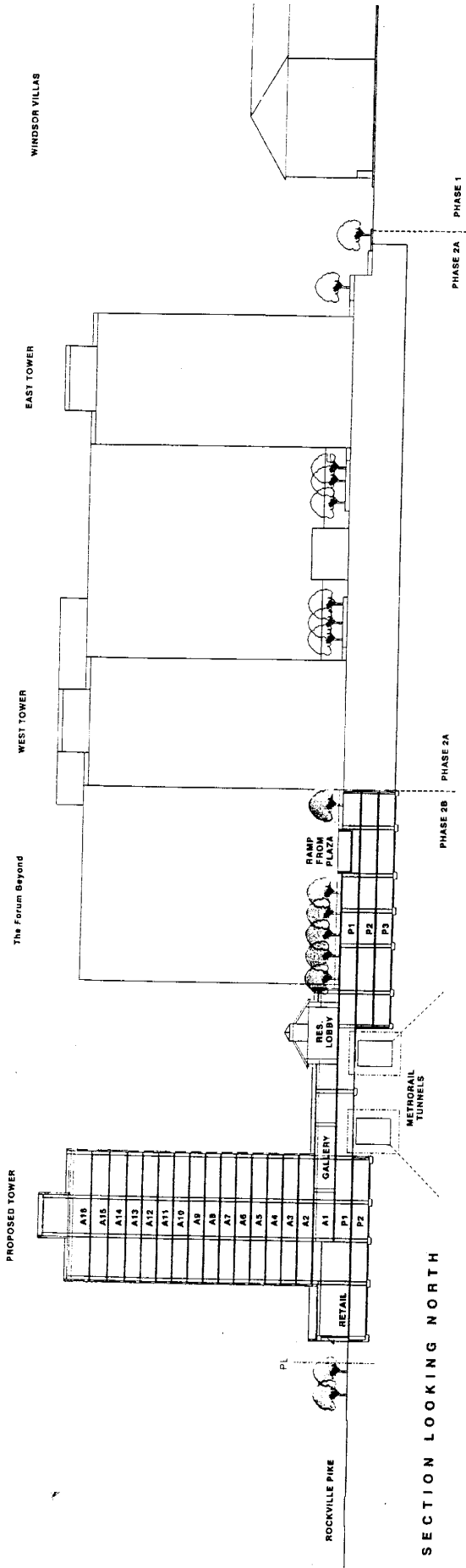
- 1. Residential Building - 16 Stories
- 2. Residential Building - 16 Stories
- 3. Mixed-Use Building - 18-19 Stories

EXISTING
PHASE
1

EXISTING
PHASE
2A

EXISTING
PHASE
2A

PROPOSED
PHASE
2B



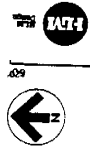
PHASE 2B - BUILDING SECTIONS

Shadow Studies

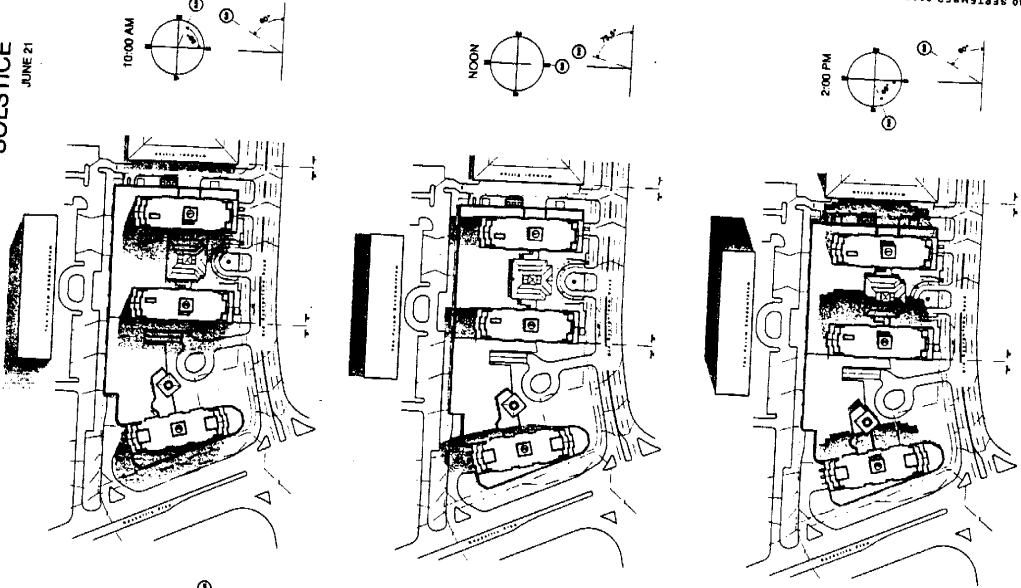
WHITE BLIND PLACE

SHADOW STUDIES

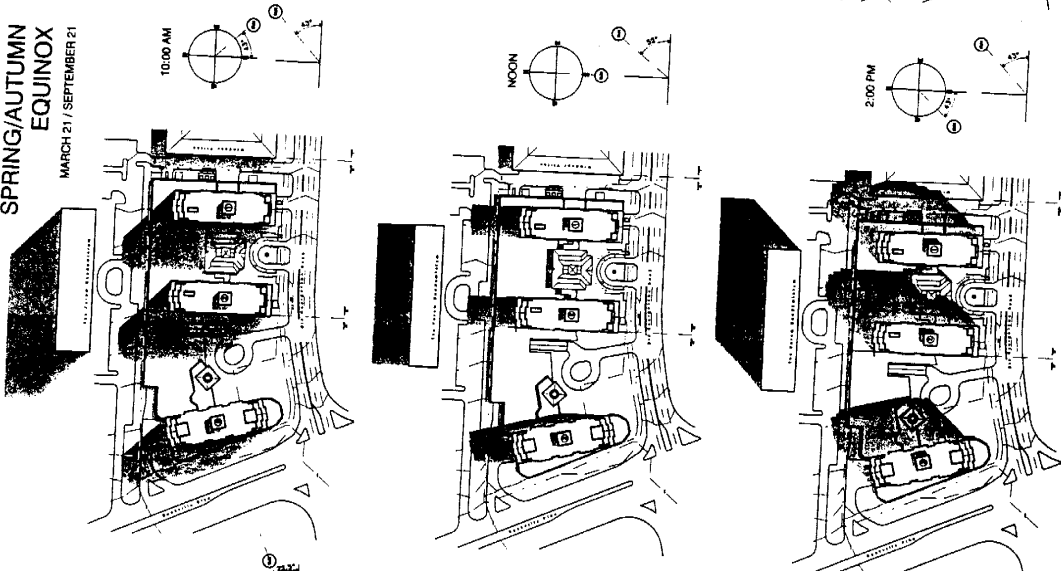
30 SEPTEMBER 2003



SUMMER SOLSTICE
JUNE 21



SPRING/AUTUMN EQUINOX
MARCH 21 / SEPTEMBER 21



WINTER SOLSTICE
DECEMBER 21

