

MATCHLINE SEE SHEET 1

CONTRACT PURCHASER / DEVELOPER
 AMERICAN GRANITE
 2000 ESHBROOK AVENUE SUITE 300
 ALEXANDRIA, VA 22314
 ATTN: BESSY MORGENTHAU
 (703) 717-4001



SPECIAL EXCEPTION SITE PLAN

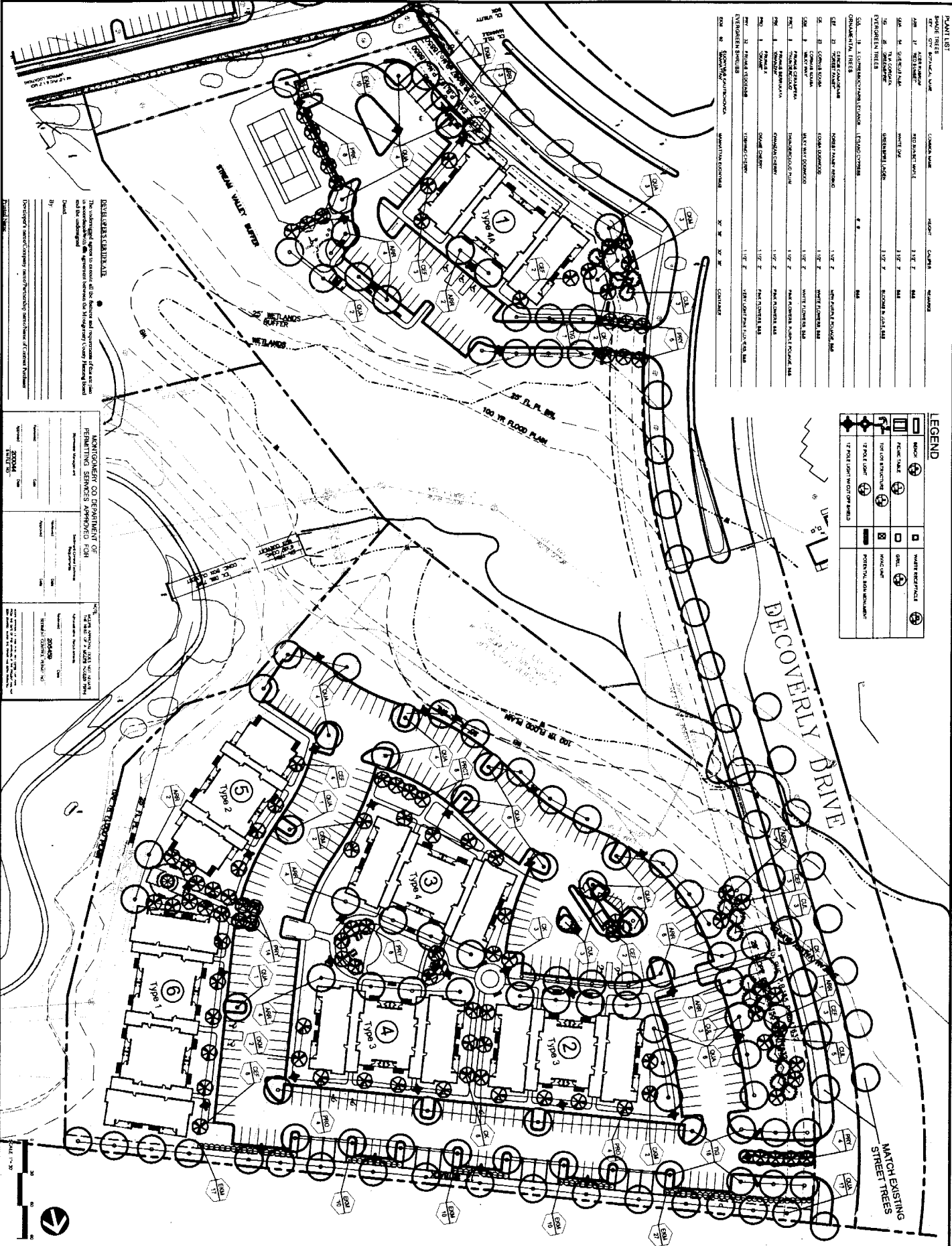
NO.	DATE	DESCRIPTION	BY	CHKD.
1	03/04/2004	ISSUED FOR PERMITTING		
2				
3				
4				
5				
6				
7				
8				
9				
10				
11				
12				
13				
14				
15				
16				
17				
18				
19				
20				
21				
22				
23				
24				
25				
26				
27				
28				
29				
30				
31				
32				
33				
34				
35				
36				
37				
38				
39				
40				
41				
42				
43				
44				
45				
46				
47				
48				
49				
50				

LANDSCAPE DESIGN BY
LandDesign
 1300 PINEAPPLE DRIVE, SUITE 100
 ROCKVILLE, VA 22060
 TEL: 703.441.7700 FAX: 703.441.9997
 WWW.LANDDESIGN.COM

SPECIAL EXCEPTION SITE PLAN
 PARCELS "AM" AND "NN" - DECOVERLY HALL
AVOLON AT DECOVERLY
PHASE 2
 GAITHERSBURG (966) ELECTION DISTRICT
 MONTGOMERY COUNTY, MARYLAND

PLANT LIST	PLANT NAME	COMMON NAME	HEIGHT	CULTURE	REMARKS
1	SPRING BURNING	SPRING BURNING	1.5' F.	MA	
2	SPRING BURNING	SPRING BURNING	1.5' F.	MA	
3	SPRING BURNING	SPRING BURNING	1.5' F.	MA	
4	SPRING BURNING	SPRING BURNING	1.5' F.	MA	
5	SPRING BURNING	SPRING BURNING	1.5' F.	MA	
6	SPRING BURNING	SPRING BURNING	1.5' F.	MA	
7	SPRING BURNING	SPRING BURNING	1.5' F.	MA	
8	SPRING BURNING	SPRING BURNING	1.5' F.	MA	
9	SPRING BURNING	SPRING BURNING	1.5' F.	MA	
10	SPRING BURNING	SPRING BURNING	1.5' F.	MA	
11	SPRING BURNING	SPRING BURNING	1.5' F.	MA	
12	SPRING BURNING	SPRING BURNING	1.5' F.	MA	
13	SPRING BURNING	SPRING BURNING	1.5' F.	MA	
14	SPRING BURNING	SPRING BURNING	1.5' F.	MA	
15	SPRING BURNING	SPRING BURNING	1.5' F.	MA	
16	SPRING BURNING	SPRING BURNING	1.5' F.	MA	
17	SPRING BURNING	SPRING BURNING	1.5' F.	MA	
18	SPRING BURNING	SPRING BURNING	1.5' F.	MA	
19	SPRING BURNING	SPRING BURNING	1.5' F.	MA	
20	SPRING BURNING	SPRING BURNING	1.5' F.	MA	
21	SPRING BURNING	SPRING BURNING	1.5' F.	MA	
22	SPRING BURNING	SPRING BURNING	1.5' F.	MA	
23	SPRING BURNING	SPRING BURNING	1.5' F.	MA	
24	SPRING BURNING	SPRING BURNING	1.5' F.	MA	
25	SPRING BURNING	SPRING BURNING	1.5' F.	MA	
26	SPRING BURNING	SPRING BURNING	1.5' F.	MA	
27	SPRING BURNING	SPRING BURNING	1.5' F.	MA	
28	SPRING BURNING	SPRING BURNING	1.5' F.	MA	
29	SPRING BURNING	SPRING BURNING	1.5' F.	MA	
30	SPRING BURNING	SPRING BURNING	1.5' F.	MA	
31	SPRING BURNING	SPRING BURNING	1.5' F.	MA	
32	SPRING BURNING	SPRING BURNING	1.5' F.	MA	
33	SPRING BURNING	SPRING BURNING	1.5' F.	MA	
34	SPRING BURNING	SPRING BURNING	1.5' F.	MA	
35	SPRING BURNING	SPRING BURNING	1.5' F.	MA	
36	SPRING BURNING	SPRING BURNING	1.5' F.	MA	
37	SPRING BURNING	SPRING BURNING	1.5' F.	MA	
38	SPRING BURNING	SPRING BURNING	1.5' F.	MA	
39	SPRING BURNING	SPRING BURNING	1.5' F.	MA	
40	SPRING BURNING	SPRING BURNING	1.5' F.	MA	
41	SPRING BURNING	SPRING BURNING	1.5' F.	MA	
42	SPRING BURNING	SPRING BURNING	1.5' F.	MA	
43	SPRING BURNING	SPRING BURNING	1.5' F.	MA	
44	SPRING BURNING	SPRING BURNING	1.5' F.	MA	
45	SPRING BURNING	SPRING BURNING	1.5' F.	MA	
46	SPRING BURNING	SPRING BURNING	1.5' F.	MA	
47	SPRING BURNING	SPRING BURNING	1.5' F.	MA	
48	SPRING BURNING	SPRING BURNING	1.5' F.	MA	
49	SPRING BURNING	SPRING BURNING	1.5' F.	MA	
50	SPRING BURNING	SPRING BURNING	1.5' F.	MA	
51	SPRING BURNING	SPRING BURNING	1.5' F.	MA	
52	SPRING BURNING	SPRING BURNING	1.5' F.	MA	
53	SPRING BURNING	SPRING BURNING	1.5' F.	MA	
54	SPRING BURNING	SPRING BURNING	1.5' F.	MA	
55	SPRING BURNING	SPRING BURNING	1.5' F.	MA	
56	SPRING BURNING	SPRING BURNING	1.5' F.	MA	
57	SPRING BURNING	SPRING BURNING	1.5' F.	MA	
58	SPRING BURNING	SPRING BURNING	1.5' F.	MA	
59	SPRING BURNING	SPRING BURNING	1.5' F.	MA	
60	SPRING BURNING	SPRING BURNING	1.5' F.	MA	
61	SPRING BURNING	SPRING BURNING	1.5' F.	MA	
62	SPRING BURNING	SPRING BURNING	1.5' F.	MA	
63	SPRING BURNING	SPRING BURNING	1.5' F.	MA	
64	SPRING BURNING	SPRING BURNING	1.5' F.	MA	
65	SPRING BURNING	SPRING BURNING	1.5' F.	MA	
66	SPRING BURNING	SPRING BURNING	1.5' F.	MA	
67	SPRING BURNING	SPRING BURNING	1.5' F.	MA	
68	SPRING BURNING	SPRING BURNING	1.5' F.	MA	
69	SPRING BURNING	SPRING BURNING	1.5' F.	MA	
70	SPRING BURNING	SPRING BURNING	1.5' F.	MA	
71	SPRING BURNING	SPRING BURNING	1.5' F.	MA	
72	SPRING BURNING	SPRING BURNING	1.5' F.	MA	
73	SPRING BURNING	SPRING BURNING	1.5' F.	MA	
74	SPRING BURNING	SPRING BURNING	1.5' F.	MA	
75	SPRING BURNING	SPRING BURNING	1.5' F.	MA	
76	SPRING BURNING	SPRING BURNING	1.5' F.	MA	
77	SPRING BURNING	SPRING BURNING	1.5' F.	MA	
78	SPRING BURNING	SPRING BURNING	1.5' F.	MA	
79	SPRING BURNING	SPRING BURNING	1.5' F.	MA	
80	SPRING BURNING	SPRING BURNING	1.5' F.	MA	
81	SPRING BURNING	SPRING BURNING	1.5' F.	MA	
82	SPRING BURNING	SPRING BURNING	1.5' F.	MA	
83	SPRING BURNING	SPRING BURNING	1.5' F.	MA	
84	SPRING BURNING	SPRING BURNING	1.5' F.	MA	
85	SPRING BURNING	SPRING BURNING	1.5' F.	MA	
86	SPRING BURNING	SPRING BURNING	1.5' F.	MA	
87	SPRING BURNING	SPRING BURNING	1.5' F.	MA	
88	SPRING BURNING	SPRING BURNING	1.5' F.	MA	
89	SPRING BURNING	SPRING BURNING	1.5' F.	MA	
90	SPRING BURNING	SPRING BURNING	1.5' F.	MA	
91	SPRING BURNING	SPRING BURNING	1.5' F.	MA	
92	SPRING BURNING	SPRING BURNING	1.5' F.	MA	
93	SPRING BURNING	SPRING BURNING	1.5' F.	MA	
94	SPRING BURNING	SPRING BURNING	1.5' F.	MA	
95	SPRING BURNING	SPRING BURNING	1.5' F.	MA	
96	SPRING BURNING	SPRING BURNING	1.5' F.	MA	
97	SPRING BURNING	SPRING BURNING	1.5' F.	MA	
98	SPRING BURNING	SPRING BURNING	1.5' F.	MA	
99	SPRING BURNING	SPRING BURNING	1.5' F.	MA	
100	SPRING BURNING	SPRING BURNING	1.5' F.	MA	

LEGEND	
	MATCH EXISTING STREET TREES
	POTENTIAL SOIL MOVEMENT
	WIND LINE
	12' FOOT LIGHT POLE (12' x 4")
	UTILITY RECEPTACLE
	WHEEL
	180 DEGREE TURNTABLE
	PLANTING HOLE
	12' FOOT LIGHT POLE (12' x 4")



DESIGNER'S CERTIFICATE

The undersigned agrees to ensure all the features and dimensions of this site plan are made as shown and to be approved by the appropriate authority.

By: _____
 Title: _____
 Date: _____

Investigator: _____
 Date: _____

NOTIFICATION OF DEPARTMENT OF PERMITTING SERVICES

Montgomery County Department of Permitting Services

Project Name: _____
 Project No: _____
 Date: _____

DATE: 11/20/20
 DRAWN BY: AM
 CHECKED BY: _____
 PLOT: 1/20
 PROJECT: 160310

SHEET NUMBER: L-3.0

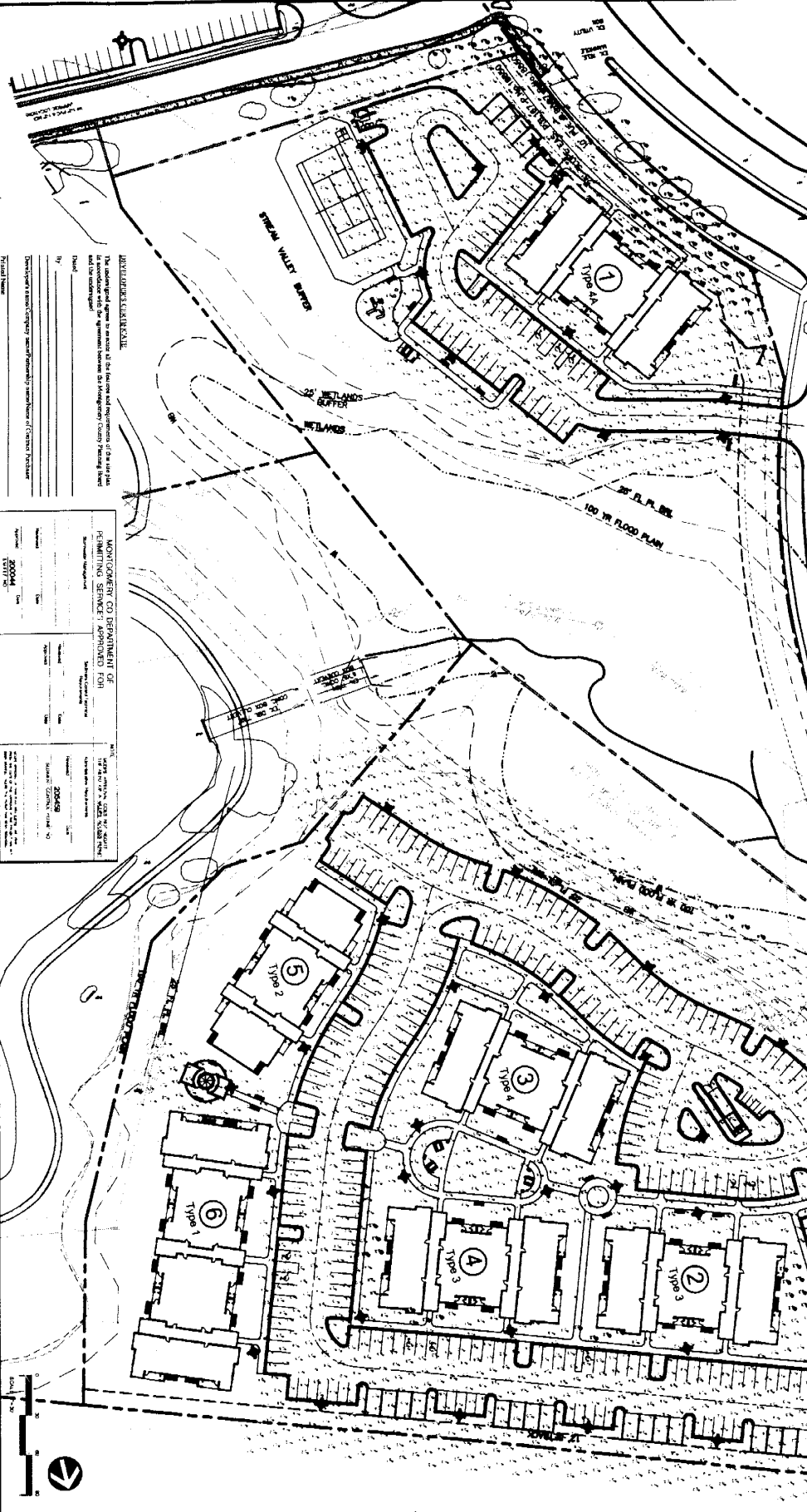
AVALON DECOVERLY PHASE TWO
MULTI-FAMILY DEVELOPMENT
 AvalonBay Communities: MONTGOMERY COUNTY, MD
 SITE LANDSCAPE PLAN

LandDesign

184 9th Street, Southern Pines, NC 28080
 V: 910.692.3788 F: 910.692.3786
 www.LandDesign.com

ITEM NO.		DESCRIPTION	DATE	BY	CHK'D
1	10	REVISED	10/10/10	JK	JK
2	11	REVISED	10/10/10	JK	JK
3	12	REVISED	10/10/10	JK	JK
4	13	REVISED	10/10/10	JK	JK
5	14	REVISED	10/10/10	JK	JK
6	15	REVISED	10/10/10	JK	JK
7	16	REVISED	10/10/10	JK	JK
8	17	REVISED	10/10/10	JK	JK
9	18	REVISED	10/10/10	JK	JK
10	19	REVISED	10/10/10	JK	JK
11	20	REVISED	10/10/10	JK	JK
12	21	REVISED	10/10/10	JK	JK
13	22	REVISED	10/10/10	JK	JK
14	23	REVISED	10/10/10	JK	JK
15	24	REVISED	10/10/10	JK	JK
16	25	REVISED	10/10/10	JK	JK
17	26	REVISED	10/10/10	JK	JK
18	27	REVISED	10/10/10	JK	JK
19	28	REVISED	10/10/10	JK	JK
20	29	REVISED	10/10/10	JK	JK
21	30	REVISED	10/10/10	JK	JK
22	31	REVISED	10/10/10	JK	JK
23	32	REVISED	10/10/10	JK	JK
24	33	REVISED	10/10/10	JK	JK
25	34	REVISED	10/10/10	JK	JK
26	35	REVISED	10/10/10	JK	JK
27	36	REVISED	10/10/10	JK	JK
28	37	REVISED	10/10/10	JK	JK
29	38	REVISED	10/10/10	JK	JK
30	39	REVISED	10/10/10	JK	JK
31	40	REVISED	10/10/10	JK	JK
32	41	REVISED	10/10/10	JK	JK
33	42	REVISED	10/10/10	JK	JK
34	43	REVISED	10/10/10	JK	JK
35	44	REVISED	10/10/10	JK	JK
36	45	REVISED	10/10/10	JK	JK
37	46	REVISED	10/10/10	JK	JK
38	47	REVISED	10/10/10	JK	JK
39	48	REVISED	10/10/10	JK	JK
40	49	REVISED	10/10/10	JK	JK
41	50	REVISED	10/10/10	JK	JK
42	51	REVISED	10/10/10	JK	JK
43	52	REVISED	10/10/10	JK	JK
44	53	REVISED	10/10/10	JK	JK
45	54	REVISED	10/10/10	JK	JK
46	55	REVISED	10/10/10	JK	JK
47	56	REVISED	10/10/10	JK	JK
48	57	REVISED	10/10/10	JK	JK
49	58	REVISED	10/10/10	JK	JK
50	59	REVISED	10/10/10	JK	JK
51	60	REVISED	10/10/10	JK	JK
52	61	REVISED	10/10/10	JK	JK
53	62	REVISED	10/10/10	JK	JK
54	63	REVISED	10/10/10	JK	JK
55	64	REVISED	10/10/10	JK	JK
56	65	REVISED	10/10/10	JK	JK
57	66	REVISED	10/10/10	JK	JK
58	67	REVISED	10/10/10	JK	JK
59	68	REVISED	10/10/10	JK	JK
60	69	REVISED	10/10/10	JK	JK
61	70	REVISED	10/10/10	JK	JK
62	71	REVISED	10/10/10	JK	JK
63	72	REVISED	10/10/10	JK	JK
64	73	REVISED	10/10/10	JK	JK
65	74	REVISED	10/10/10	JK	JK
66	75	REVISED	10/10/10	JK	JK
67	76	REVISED	10/10/10	JK	JK
68	77	REVISED	10/10/10	JK	JK
69	78	REVISED	10/10/10	JK	JK
70	79	REVISED	10/10/10	JK	JK
71	80	REVISED	10/10/10	JK	JK
72	81	REVISED	10/10/10	JK	JK
73	82	REVISED	10/10/10	JK	JK
74	83	REVISED	10/10/10	JK	JK
75	84	REVISED	10/10/10	JK	JK
76	85	REVISED	10/10/10	JK	JK
77	86	REVISED	10/10/10	JK	JK
78	87	REVISED	10/10/10	JK	JK
79	88	REVISED	10/10/10	JK	JK
80	89	REVISED	10/10/10	JK	JK
81	90	REVISED	10/10/10	JK	JK
82	91	REVISED	10/10/10	JK	JK
83	92	REVISED	10/10/10	JK	JK
84	93	REVISED	10/10/10	JK	JK
85	94	REVISED	10/10/10	JK	JK
86	95	REVISED	10/10/10	JK	JK
87	96	REVISED	10/10/10	JK	JK
88	97	REVISED	10/10/10	JK	JK
89	98	REVISED	10/10/10	JK	JK
90	99	REVISED	10/10/10	JK	JK
91	100	REVISED	10/10/10	JK	JK

- NOTES**
1. LIGHTING PLAN IS BASED ON THE PLANNING LISTINGS AND SHALL BE REVISIONS AND MODIFIED AS NECESSARY TO REFLECT THE LATEST INFORMATION AND KNOWLEDGE FOR THE HEALTH, SAFETY, AND WELFARE OF ALL USERS.
 2. ALL BASED ON DATA PROVIDED BY: C. DESSAUN ASSOCIATES, INC., ROCKVILLE, MARYLAND.
 3. LIGHTING PHOTOMETRIC CALCULATIONS PROVIDED BY: HQ GROUP, WASHINGTON, VA.
 4. THE LIGHTING PLAN ILLUSTRATES PHOTO-METRIC DATA WITHOUT HOUSE-ROOF CUT OFF BEHIND FACES ON THE LIGHT RAYS. THE PHOTO-METRIC DATA FOR THESE FACES WILL BE OBTAINED FROM THE PHOTOMETRIC DATA PROVIDED BY THE MANUFACTURER OF THE LIGHT FIXTURES AND SHALL BE USED TO CORRECT THE CUT OFF BEHIND FACES ON THE LIGHT RAYS TO REFLECT THE CUT OFF BEHIND FACES DATA. THESE DATA WILL BE USED TO CORRECT THE LIGHTING PLAN TO REFLECT THE CORRECTED DATA. THESE DATA WILL BE USED TO CORRECT THE LIGHTING PLAN TO REFLECT THE CORRECTED DATA.



DESIGNER'S CERTIFICATE

The undersigned certifies that he/she is a duly licensed professional engineer in the State of Maryland and is duly qualified to prepare and seal the drawings herein.

Signature: _____ Date: _____

Title: _____

Professional Engineer License No. _____

Project Name: _____

MONTEGOMERY COUNTY DEPARTMENT OF ENVIRONMENTAL SERVICES

PERMITTING SERVICES

PROJECT: _____

DATE: _____

STATUS: _____

APPROVED BY: _____

DATE: _____

DATE: 10/10/10
 DRAWN BY: JK
 CHECKED BY: JK
 PROJECT # 300012
 SHEET # L-2.0

**AVALON DECOVERLY PHASE TWO
 MULTI-FAMILY DEVELOPMENT**
 Ardenvale Communities: MONTGOMERY COUNTY, MD
 LIGHTING PLAN

LandDesign

164 10th Street, Suite 100, Rockville, MD 20850
 P: 301-761-1000
 www.LandDesign.com

DATE: 2/17/04
SCALE: 1/16"=1'-0"

NILES BOLTON ASSOCIATES
ARCHITECTURE
LANDSCAPE ARCHITECTURE
INTERIOR DESIGN
PLANNING
30 NORTH LAS VEGAS
SUITE 200
ALPHARETTA, GEORGIA
302-525-2222
FAX 302-525-2222

AVALON DISCOVERY PHASE II
BUILDING TYPE 4

