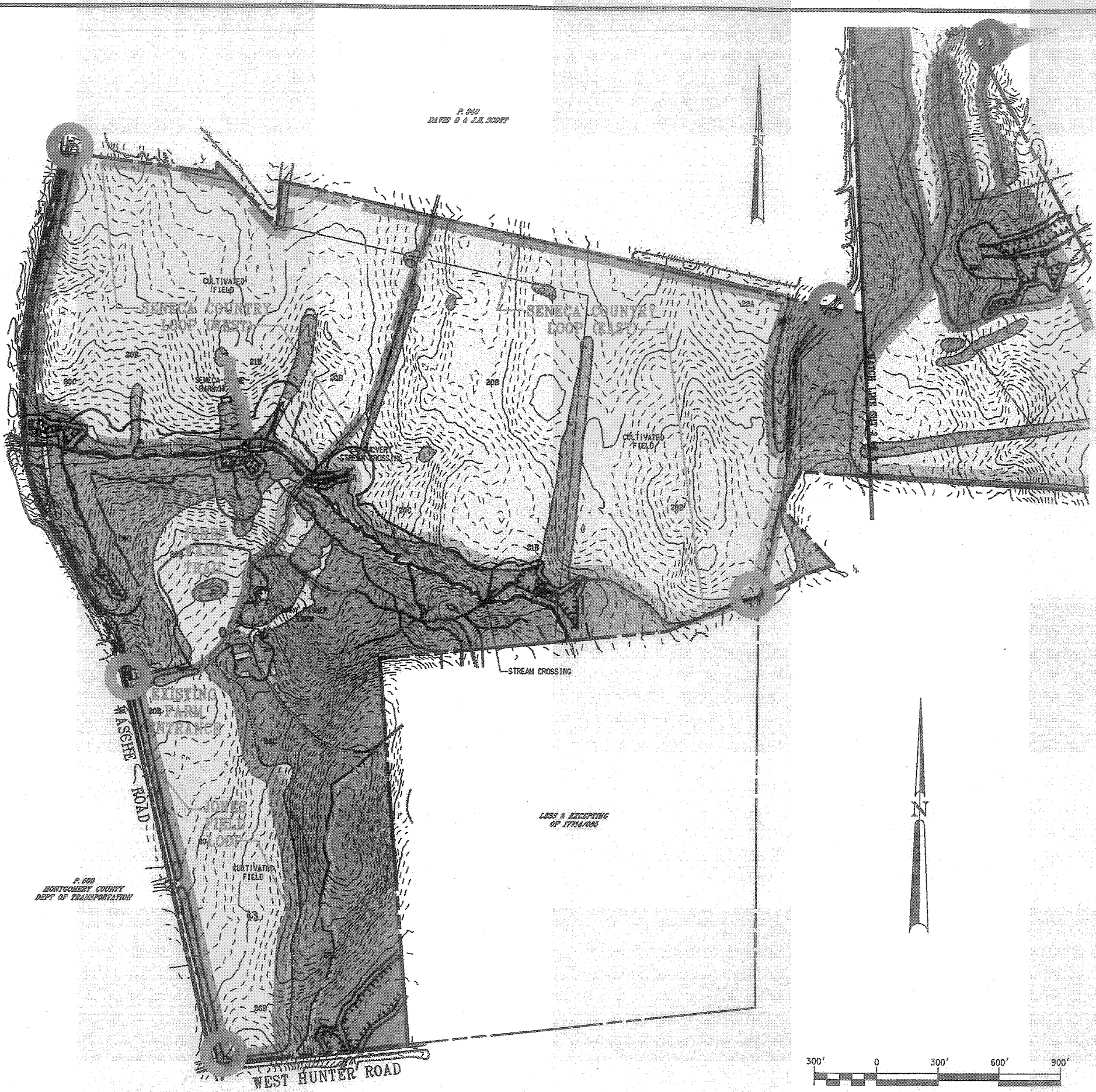


VICINITY MAP
1" = 4000'



P. 910
DATED 6.6.2007

P. 600
MONTGOMERY COUNTY
DEPT. OF TRANSPORTATION

LESS & EXCEPTING
OF 1776/1005

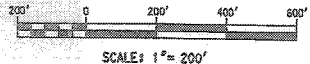
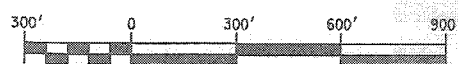
TRAIL LEGEND

- EXISTING TRAILS
- CHALLENGING EQUESTRIAN TRAILS
- HIKER TRAIL
- HANDICAPPED ACCESSIBLE PEDESTRIAN TRAIL
- STREAM CROSSING
- SEATING AREA

LEGEND

- BOUNDARY LINE
- EX CONTOUR
- EX TIE LINE
- EX STRUCTURE
- EX STREAM
- STEEP SLOPES 15-25%
- STEEP SLOPES 25% & >
- HORIZONTAL SETBACKS
- 25' STATE BUFFER

PLAN



SCALE: 1" = 200'

REV	DATE	DESCRIPTION

NOT FOR
CONSTRUCTION

THE MARYLAND-NATIONAL CAPITAL
**PARK AND PLANNING
COMMISSION**

FWM
FREDERICK WARD ASSOCIATES

- BRUNSTMAN SERVICES, LLC
- SLATER ASSOCIATES
- ELIZABETH ANDERSON CHASE / ARCHAEOLOGY
- ROSSIGNOL & ASSOCIATES, INC.
- GARDOLL ENGINEERING, INC.
- DANIEL CONSULTANTS, INC.
- MONTAN & HUK

PROPOSED TRAIL PLAN
WOODSTOCK EQUESTRIAN PARK
ELEVENTH ELECTION DISTRICT
MONTGOMERY COUNTY, MARYLAND

03/18/04
AS SHOWN
DESIGNED BY
KLS
DRAWN BY
CM
P3
33
293140.00