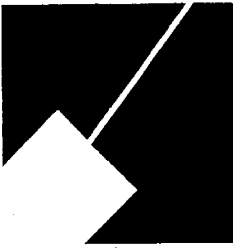


Item #6

M-NCPPC



MONTGOMERY COUNTY DEPARTMENT OF PARK AND PLANNING

THE MARYLAND-NATIONAL CAPITAL
PARK AND PLANNING COMMISSION

8787 Georgia Avenue
Silver Spring, Maryland 20910-3760
301-495-4500, www.mncppc.org

M E M O R A N D U M

DATE: March 12, 2004
TO: Montgomery County Planning Board
FROM: A. Malcolm Shaneman
Development Review Division
(301) 495-4587
SUBJECT: Informational Maps for Subdivision Items on the
Planning Board's Agenda for March 18, 2004.

Attached are copies of plan drawings for Item #04, #05, and #06. These subdivision items are scheduled for Planning Board consideration on March 18, 2004. The items are further identified as follows:

Agenda Item #04 -Preliminary Plan 1-04024
Glenbrook Knoll

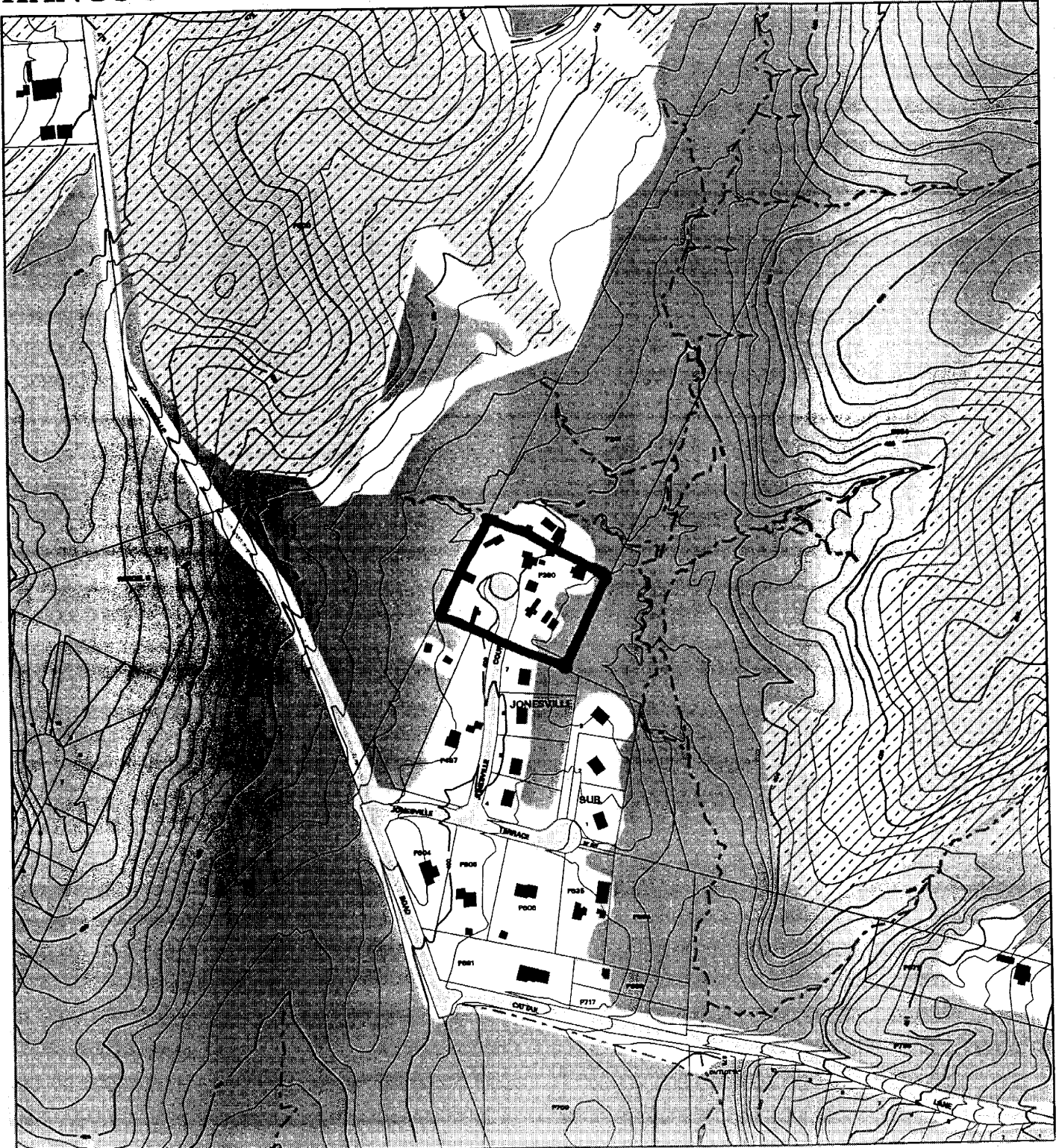
Agenda Item #05 -Pre-Preliminary Plan 7-04022
Columbia Forest

Agenda Item #06 -Pre-Preliminary Plan 7-00037
Hancock/Anderson Property

Attachment

VICINITY MAP FOR

HANCOCK/ANDERSON PROPERTY (7-00037)



Map compiled on April 24, 2000 at 10:01 AM | Site located on base sheet no - 225NW18

NOTICE

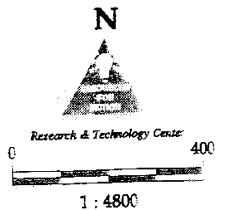
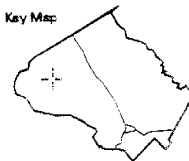
The planimetric, property, and topographic information shown on this map is based on copyrighted Map Products from the Montgomery County Department of Park and Planning of the Maryland-National Capital Park and Planning Commission, and may not be copied or reproduced without written permission from M-NCPPC.

Property lines are compiled by adjusting the property lines to topography created from aerial photography and should not be interpreted as actual field surveys. Planimetric features were compiled from 1:14400 scale aerial photography using stereo photogrammetric methods.

This map is created from a variety of data sources, and may not reflect the most current conditions in any one location and may not be completely accurate or up to date. All map features are approximately within five feet of their true location. This map may not be the same as a map of the same area plotted at an earlier time as the data is continuously updated. Use of this map, other than for general planning purposes is not recommended. - Copyright 1996

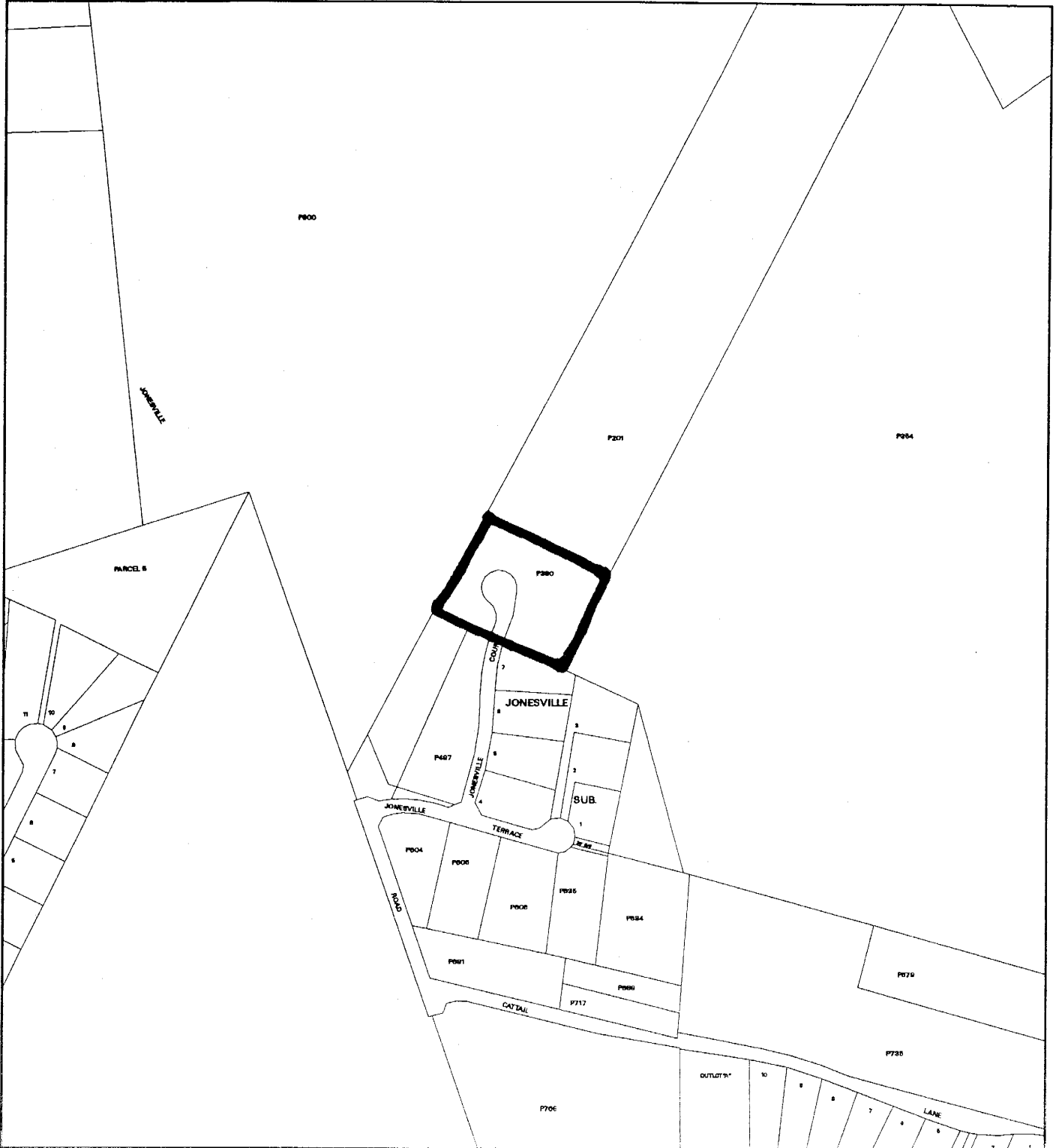
MONTGOMERY COUNTY DEPARTMENT OF PARK AND PLANNING
THE MARYLAND-NATIONAL CAPITAL PARK AND PLANNING COMMISSION
8787 Georgia Avenue - Silver Spring, Maryland 20910-3760

Key Map:



VICINITY MAP FOR

HANCOCK/ANDERSON PROPERTY (7-00037)



Map compiled on April 24, 2000 at 10:08 AM | Site located on base sheet no - 225NW1E

NOTICE

The planimetric, property, and topographic information shown on this map is based on copyrighted Map Products from the Montgomery County Department of Park and Planning of the Maryland-National Capital Park and Planning Commission, and may not be copied or reproduced without written permission from M-NCPPC.

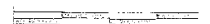
Property lines are compiled by adjusting the property lines to topography created from aerial photography and should not be interpreted as actual field surveys. Planimetric features were compiled from 1:14400 scale aerial photography using stereo photogrammetric methods.

This map is created from a variety of data sources, and may not reflect the most current conditions in any one location and may not be completely accurate or up to date. All map features are approximately within five feet of their true location. This map may not be the same as a map of the same area plotted at an earlier time as the data is continuously updated. Use of this map, other than to general planning purposes is not recommended. - Copyright 199E

Key Map:



Research & Technology Group



1 : 4800

