

Item # 8

M-NCPPC



MONTGOMERY COUNTY DEPARTMENT OF PARK AND PLANNING

THE MARYLAND-NATIONAL CAPITAL
PARK AND PLANNING COMMISSION

8787 Georgia Avenue
Silver Spring, Maryland 20910-3760
301-495-4500, www.mncppc.org

M E M O R A N D U M

DATE: March 26, 2004
TO: Montgomery County Planning Board
FROM: A. Malcolm Shaneman
Development Review Division
(301) 495-4587
SUBJECT: Informational Maps for Subdivision Items on the
Planning Board's Agenda for April 01, 2004.

Attached are copies of plan drawings for Item #07, #08 and #09. These subdivision items are scheduled for Planning Board consideration on April 01, 2004. The items are further identified as follows:

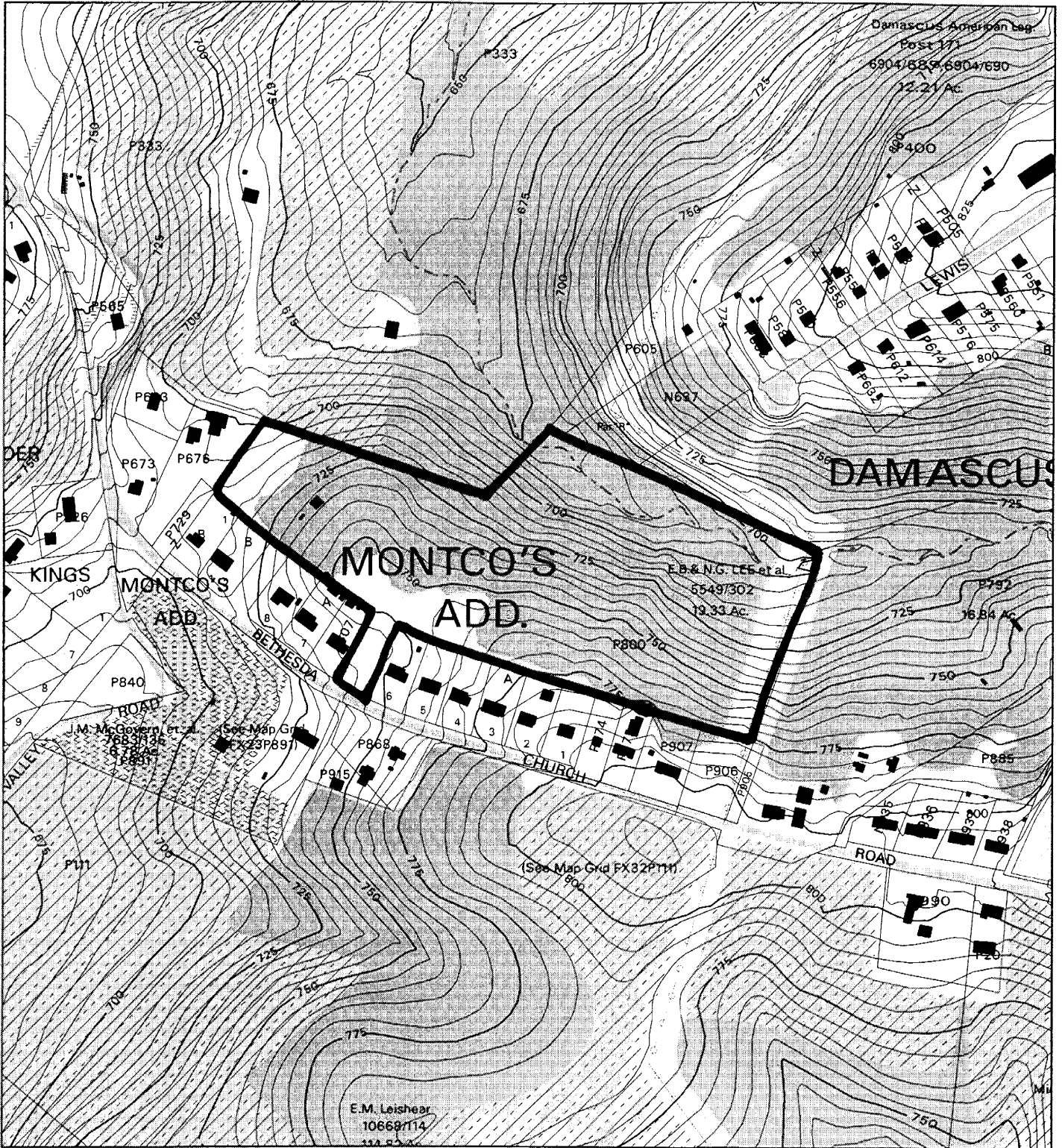
Agenda Item #07 -Pre-Preliminary Plan 7-04014
Garrett Park

Agenda Item #08 -Preliminary Plan 1-03106
Montco Addition to Damascus

Agenda Item #09 -Preliminary Plan 1-03106
Good Earth Garden Center

Attachment

MONTCO (1-03106)



Map compiled on March 26, 2004 at 9:31 AM | Site located on base sheet no - 237NW10

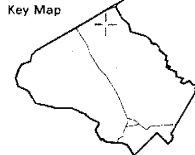
NOTICE

The planimetric, property, and topographic information shown on this map is based on copyrighted Map Products from the Montgomery County Department of Park and Planning of the Maryland-National Capital Park and Planning Commission, and may not be copied or reproduced without written permission from M-NCPPC.

Property lines are compiled by adjusting the property lines to topography created from aerial photography and should not be interpreted as actual field surveys. Planimetric features were compiled from 1:14400 scale aerial photography using stereo photogrammetric methods.

This map is created from a variety of data sources, and may not reflect the most current conditions in any one location and may not be completely accurate or up to date. All map features are approximately within five feet of their true location. This map may not be the same as a map of the same area plotted at an earlier time as the data is continuously updated. Use of this map, other than for general planning purposes is not recommended. - Copyright 1998

Key Map



N



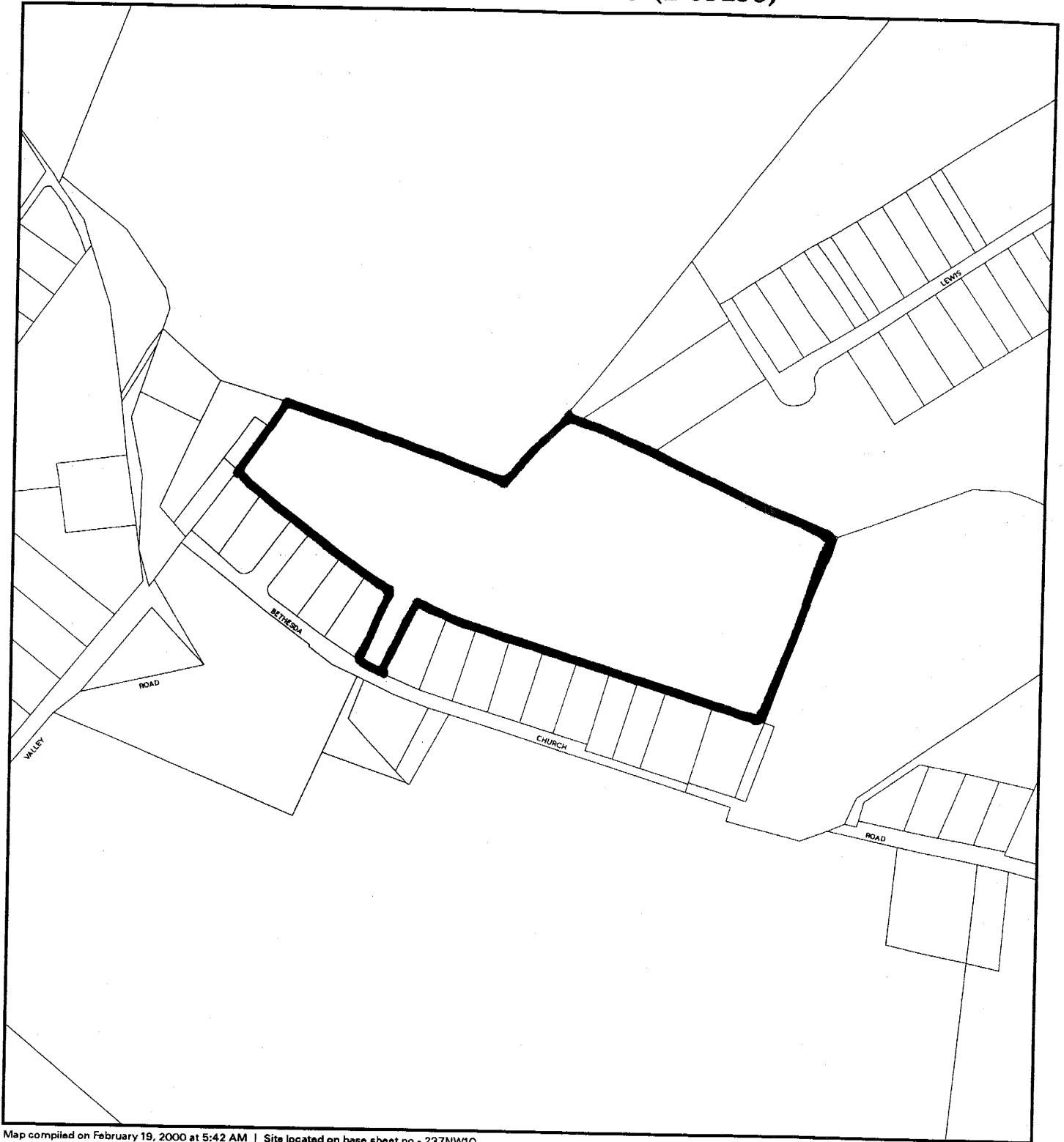
Research & Technology Center

0 400

1 inch = 400 feet
1 : 4800

VICINITY MAP FOR

MONTCO ADDITION TO DAMASCUS (1-03106)



Map compiled on February 19, 2000 at 5:42 AM | Site located on base sheet no - 237NW10

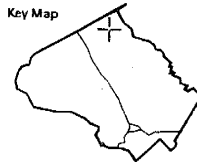
NOTICE

The planimetric, property, and topographic information shown on this map is based on copyrighted Map Products from the Montgomery County Department of Park and Planning of the Maryland-National Capital Park and Planning Commission, and may not be copied or reproduced without written permission from M-NCPPC.

Property lines are compiled by adjusting the property lines to topography created from aerial photography and should not be interpreted as actual field surveys. Planimetric features were compiled from 1:14400 scale aerial photography using stereo photogrammetric methods.

This map is created from a variety of data sources, and may not reflect the most current conditions in any one location and may not be completely accurate or up to date. All map features are approximately within five feet of their true location. This map may not be the same as a map of the same area plotted at an earlier time as the data is continuously updated. Use of this map, other than for general planning purposes is not recommended. - Copyright 1998

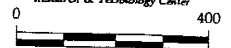
Key Map



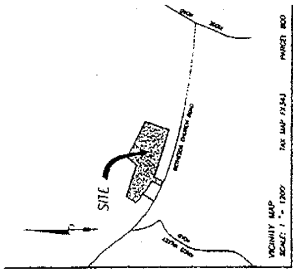
N



Research & Technology Center



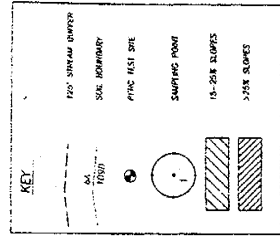
1 : 4800



PROJECT MAP
SCALE: 1" = 1000'
DATE: MAY 1984
PROJECT NO. 800

PROPERTY MAP
SCALE: 1" = 1000'
DATE: MAY 1984
PROJECT NO. 800

PROJECT NO. 800
DATE: MAY 1984
PROJECT NO. 800

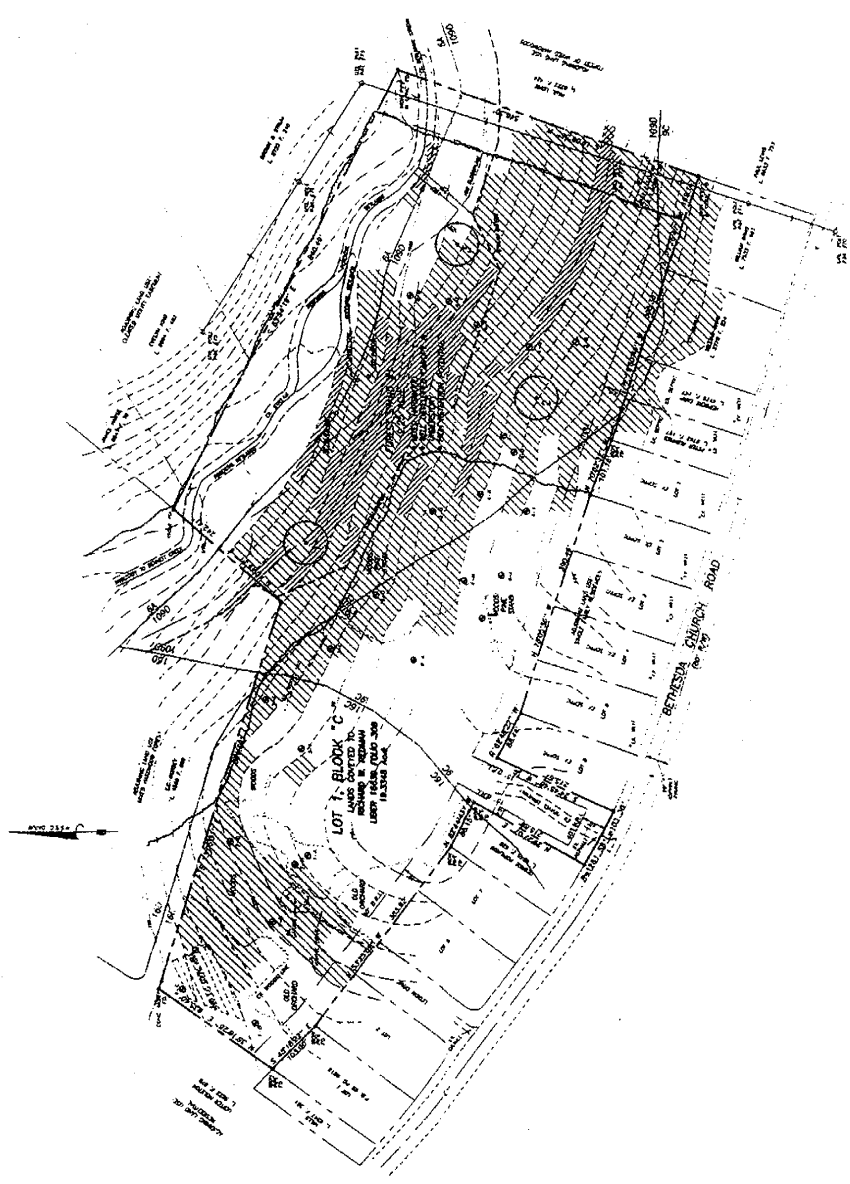


THE MARYLAND NATIONAL CENTER
FOR AND PLANNING CONSULTANTS

APPROVAL

PROJECT PLAN

Plan No. 4-02322



MARYLAND NATIONAL CENTER FOR AND PLANNING CONSULTANTS

MONTICO

APPROVAL

PROJECT PLAN

Plan No. 4-02322

APPROVED

DATE: MAY 1984

PROJECT NO. 800

THE MARYLAND NATIONAL CENTER FOR AND PLANNING CONSULTANTS

APPROVAL

PROJECT PLAN

Plan No. 4-02322

APPROVED

DATE: MAY 1984

PROJECT NO. 800