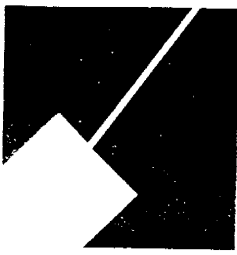


Item # 7

M-NCPPC



**MONTGOMERY COUNTY DEPARTMENT OF PARK AND PLANNING**

THE MARYLAND-NATIONAL CAPITAL  
PARK AND PLANNING COMMISSION

8787 Georgia Avenue  
Silver Spring, Maryland 20910-3760  
301-495-4500. www.mncppc.org

M E M O R A N D U M

**DATE:** April 9, 2004

**TO:** Montgomery County Planning Board

**FROM:** A. Malcolm Shaneman  
Development Review Division  
(301) 495-4587

**SUBJECT:** Informational Maps for Subdivision Items on the  
Planning Board's Agenda for April 09, 2004.

-----

Attached are copies of plan drawings for Items #04, #05, #06, and #07. These subdivision items are scheduled for Planning Board consideration on April 09, 2004. The items are further identified as follows:

Agenda Item #04 -Preliminary Plan 1-03092  
Sandy Spring Friends School

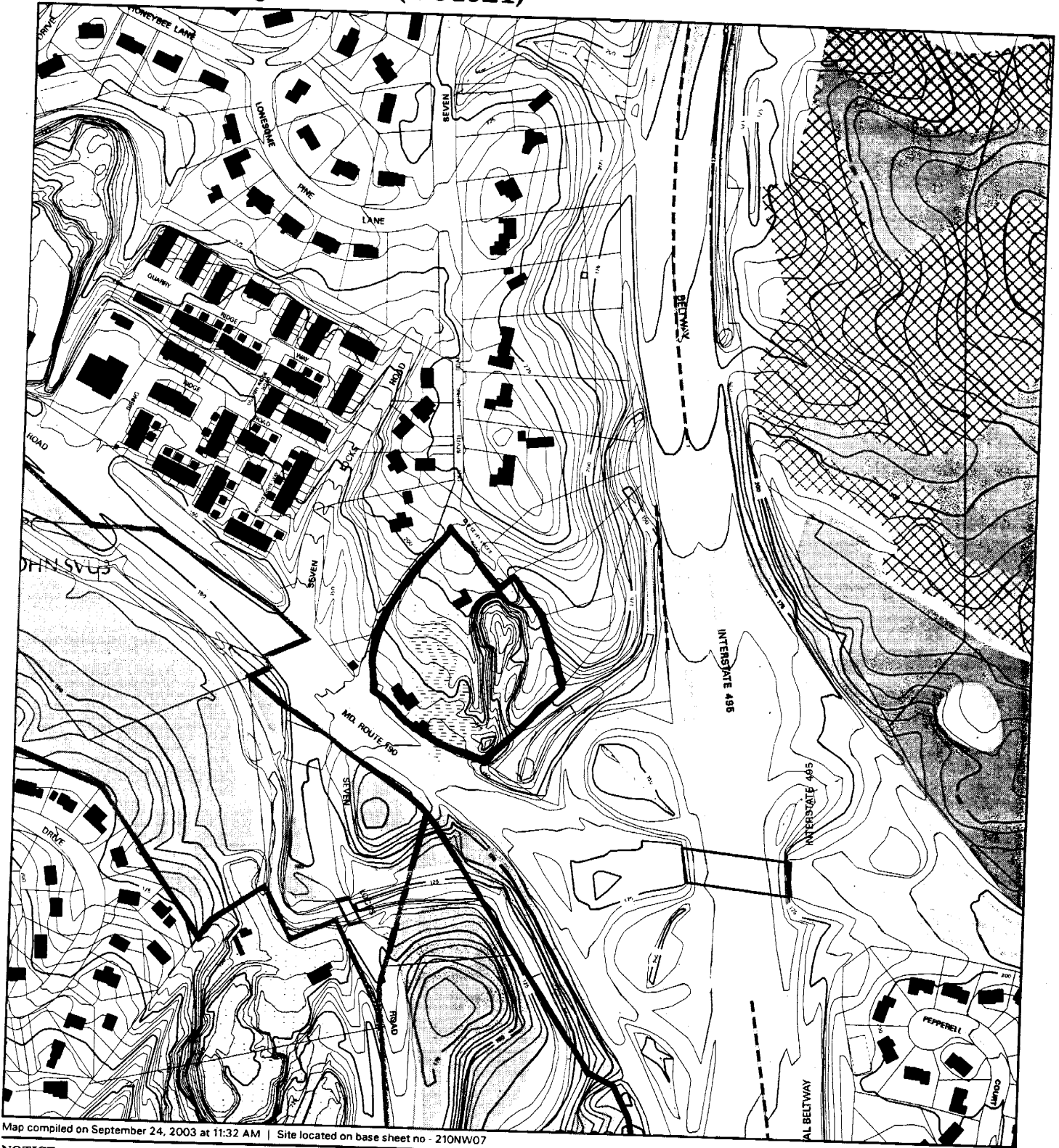
Agenda Item #05 -Preliminary Plan 1-03103  
Jamison Property

Agenda Item #06 -Preliminary Plan 1-04026  
Kinzie Property

Agenda Item #07 -Preliminary Plan 1-04021  
Giancola Quarry

Attachment

# GIANCOLA QUARRY (1-04021)



Map compiled on September 24, 2003 at 11:32 AM | Site located on base sheet no - 210NW07

## NOTICE

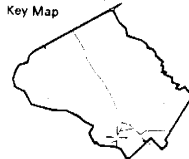
The planimetric, property, and topographic information shown on this map is based on copyrighted Map Products from the Montgomery County Department of Park and Planning of the Maryland-National Capital Park and Planning Commission, and may not be copied or reproduced without written permission from M-NCPPC.

Property lines are compiled by adjusting the property lines to topography created from aerial photography and should not be interpreted as actual field surveys. Planimetric features were compiled from 1:14400 scale aerial photography using stereo photogrammetric methods.

This map is created from a variety of data sources, and may not reflect the most current conditions in any one location and may not be completely accurate or up to date. All map features are approximately within five feet of their true location. This map may not be the same as a map of the same area plotted at an earlier time as the data is continuously updated. Use of this map, other than for general planning purposes is not recommended. - Copyright 1998

**MONTGOMERY COUNTY DEPARTMENT OF PARK AND PLANNING**  
 THE MARYLAND-NATIONAL CAPITAL PARK AND PLANNING COMMISSION  
 8787 Georgia Avenue - Silver Spring, Maryland 20910-3760

Key Map



N

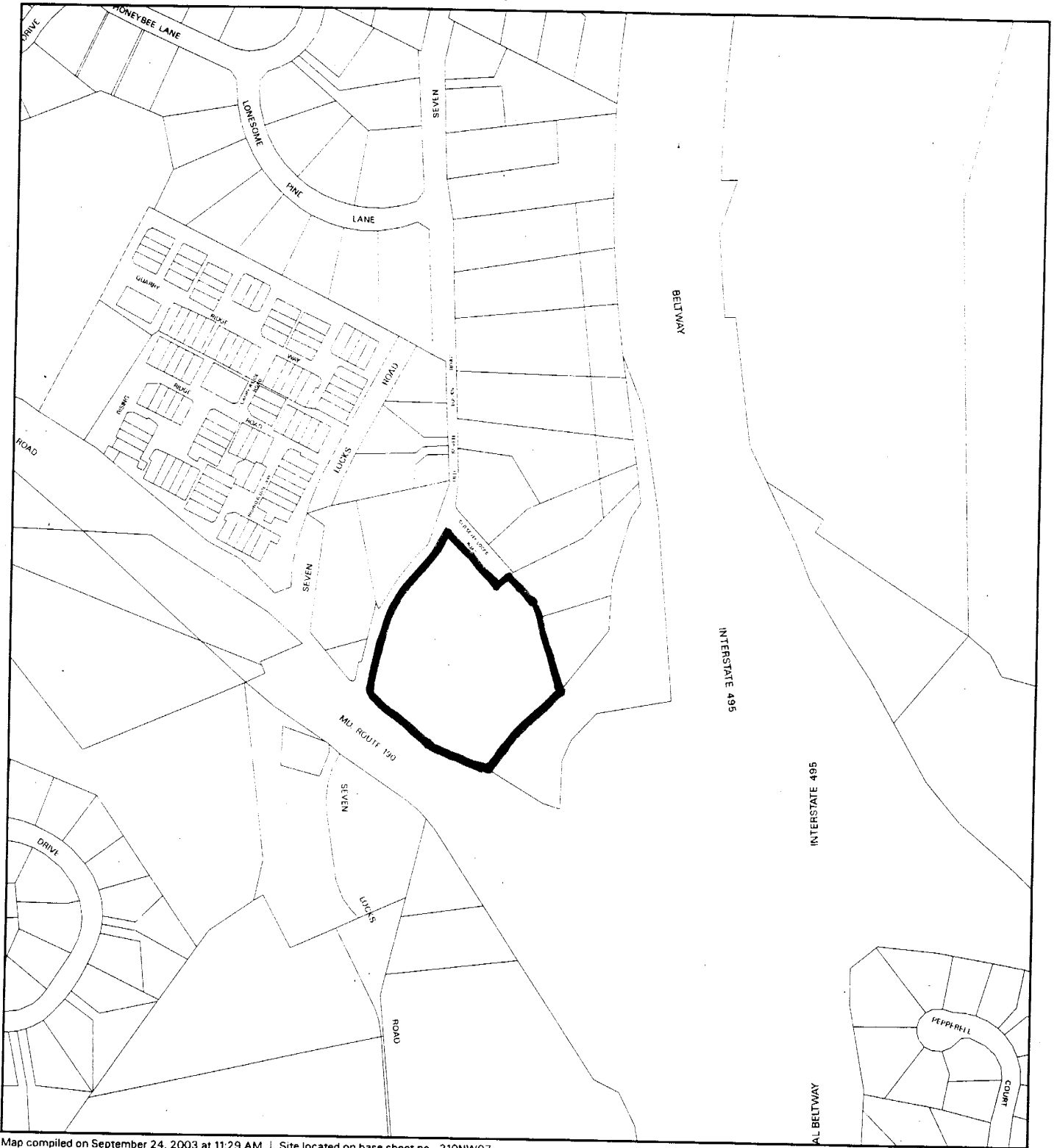


Research & Technology Center



1 : 4800

# GIANCOLA QUARRY (1-04021)



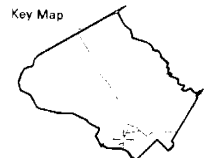
Map compiled on September 24, 2003 at 11:29 AM | Site located on base sheet no - 210NW07

**NOTICE**

The planimetric, property, and topographic information shown on this map is based on copyrighted Map Products from the Montgomery County Department of Park and Planning of the Maryland -National Capital Park and Planning Commission, and may not be copied or reproduced without written permission from M-NCPPC.

Property lines are compiled by adjusting the property lines to topography created from aerial photography and should not be interpreted as actual field surveys. Planimetric features were compiled from 1:14400 scale aerial photography using stereo photogrammetric methods.

This map is created from a variety of data sources, and may not reflect the most current conditions in any one location and may not be completely accurate or up to date. All map features are approximately within five feet of their true location. This map may not be the same as a map of the same area plotted at an earlier time as the data is continuously updated. Use of this map, other than for general planning purposes is not recommended. - Copyright 1998

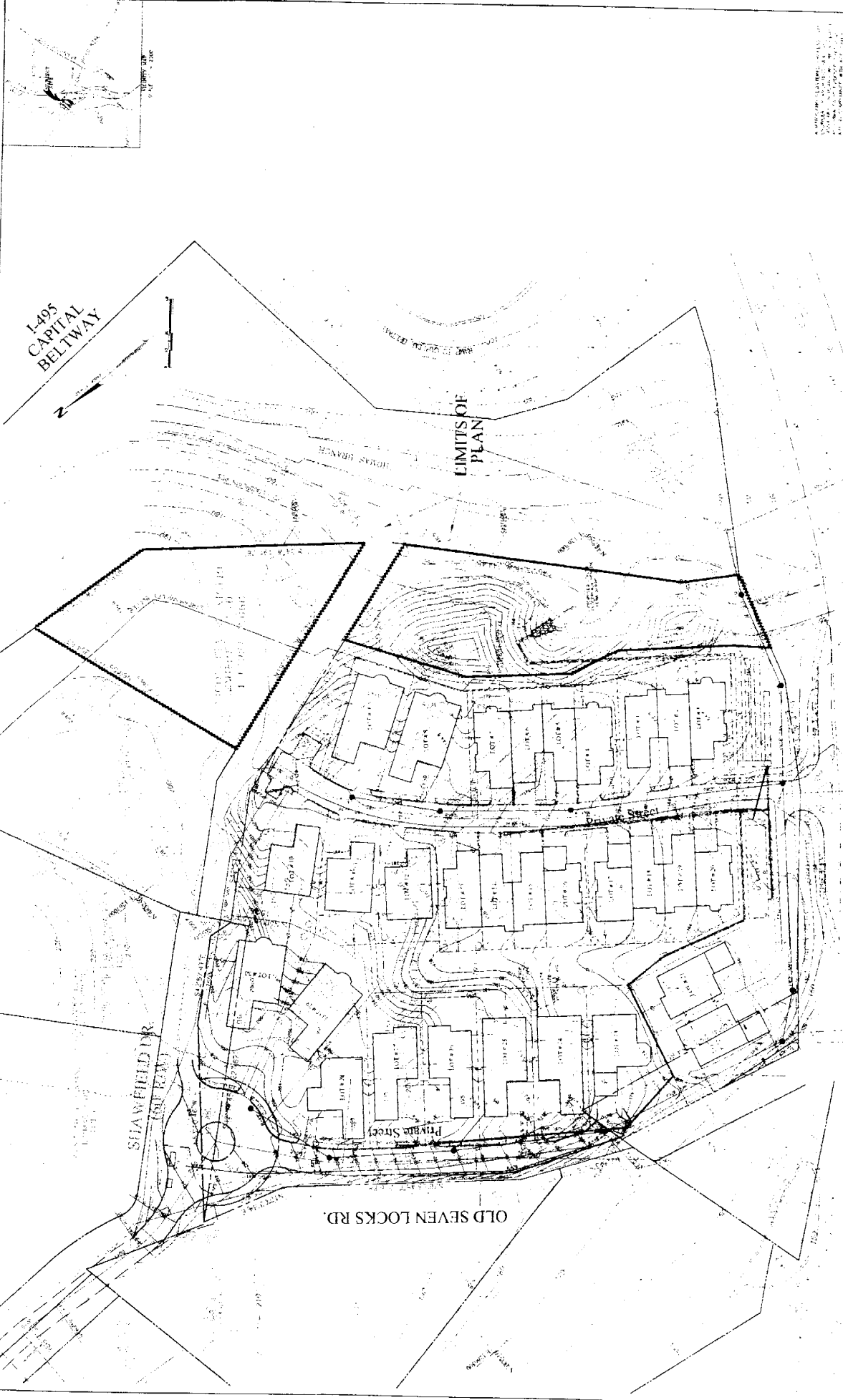


N

Research & Technology Center

0 400

1 : 4800



I-495 CAPITAL BELTWAY



LIMITS OF PLAN

EX. RIVER ROAD (MD RTE. 190)

OLD SEVEN LOCKS RD.

SHAWFIELD DR



CALL "MISS UTILITY" AT 703-241-1111

GIANCOLA QUARRY

PRELIMINARY PLAN

CONTRACT FOR HATCH  
GIANCOLA QUARRY  
SOUTH LAKES OBSERVATION CENTER  
SOUTH LAKES OBSERVATION CENTER  
SOUTH LAKES OBSERVATION CENTER  
SOUTH LAKES OBSERVATION CENTER  
SOUTH LAKES OBSERVATION CENTER



DATE	DESCRIPTION

SCALE: 1" = 100'