M E M O R A N D U M

DATE: May 7, 2004
TO: Montgomery County Planning Board
FROM: Richard Weaver
Development Review Division
(301) 495-4544
SUBJECT: Informational Maps for Subdivision Items on the
Planning Board's Agenda for May 13, 2004.

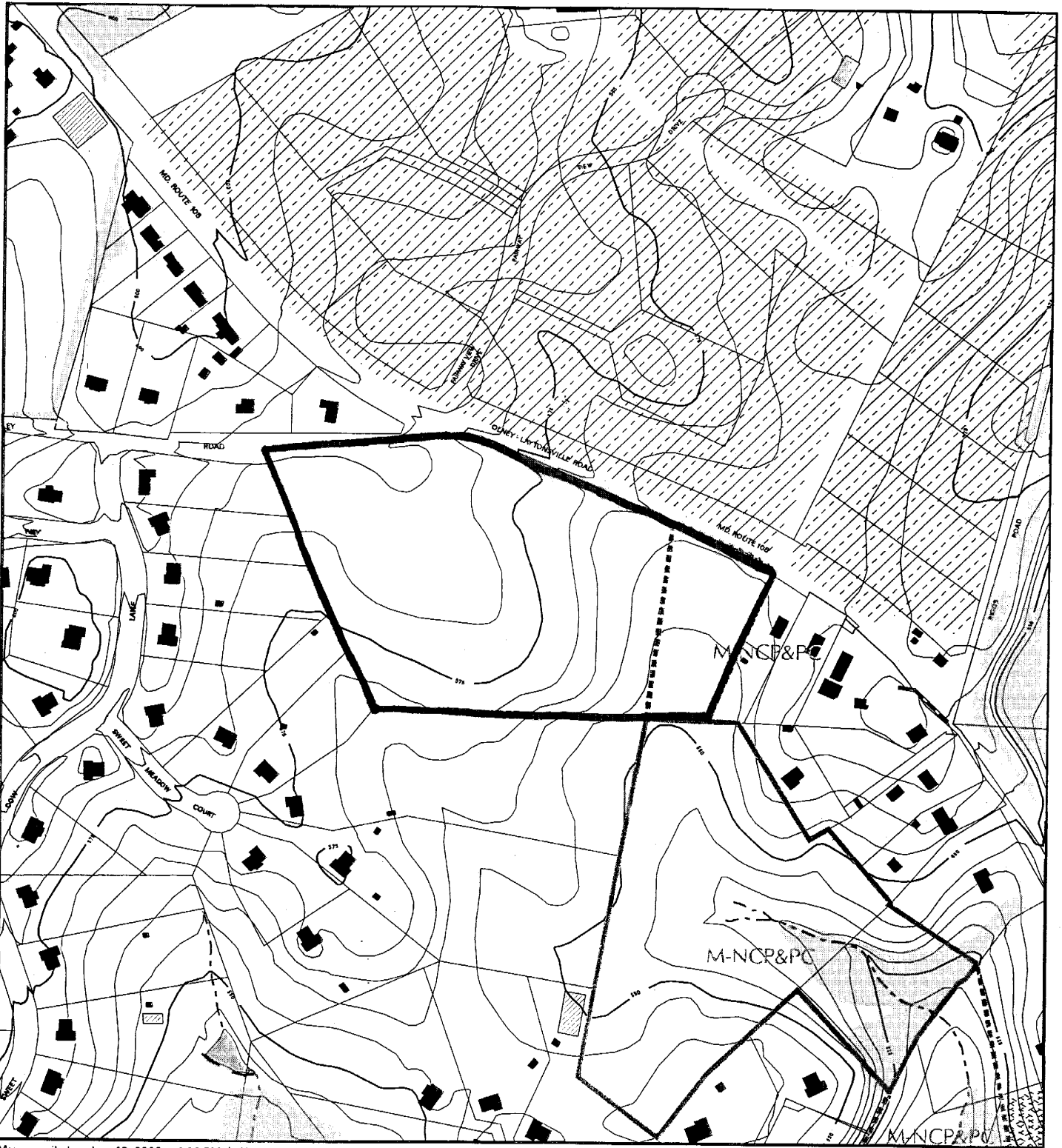
Attached are copies of plan drawings for Items #02, and #03. These subdivision items are scheduled for Planning Board consideration on May 13, 2004. The items are further identified as follows:

Agenda Item #02 Preliminary Plan 1-03105
Griffith Property

Agenda Item #03 Preliminary Plan 1-04065
Hermitage

VICINITY MAP FOR

GRIFFITH PROPERTY (1-03105)



Map compiled on June 19, 2003 at 1:39 PM | Site located on base sheet no - 228NW06

NOTICE

The planimetric, property, and topographic information shown on this map is based on copyrighted Map Products from the Montgomery County Department of Park and Planning of the Maryland-National Capital Park and Planning Commission, and may not be copied or reproduced without written permission from M-NCPPC.

Property lines are compiled by adjusting the property lines to topography created from aerial photography and should not be interpreted as actual field surveys. Planimetric features were compiled from 1:14400 scale aerial photography using stereo photogrammetric methods.

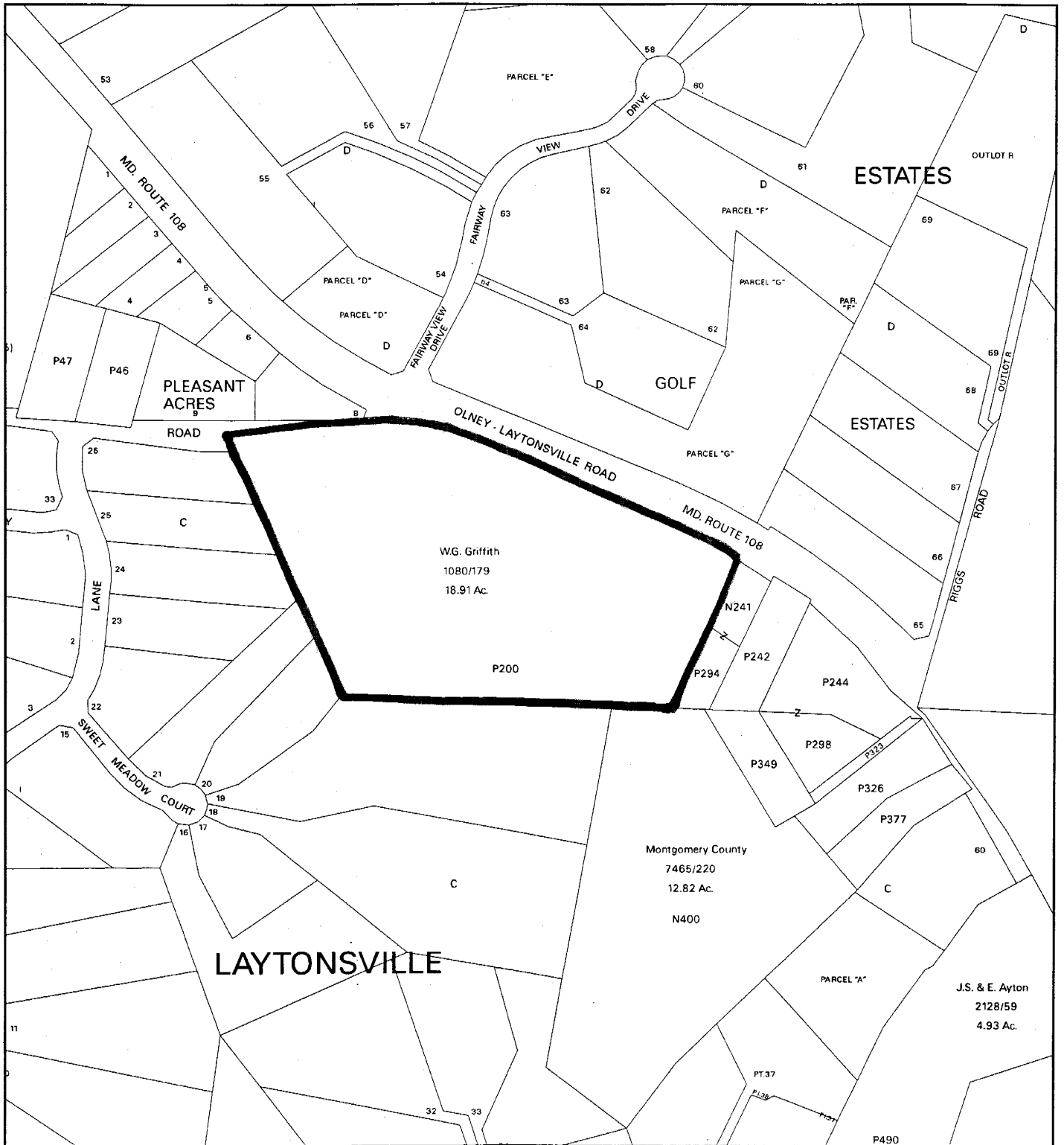
This map is created from a variety of data sources, and may not reflect the most current conditions in any one location and may not be completely accurate or up to date. All map features are approximately within five feet of their true location. This map may not be the same as a map of the same area plotted at an earlier time as the data is continuously updated. Use of this map, other than for general planning purposes is not recommended. - Copyright 1998

Key Map



1 : 4800

GRIFFITH PROPERTY (1-03105)



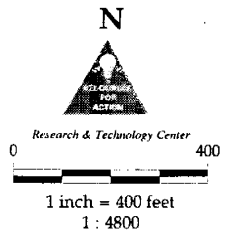
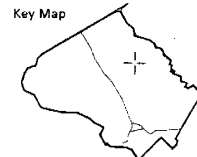
Map compiled on May 07, 2004 at 10:43 AM | Site located on base sheet no - 228NW06

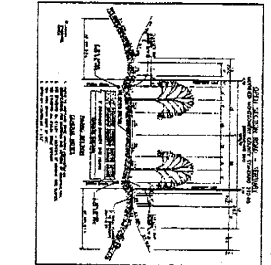
NOTICE

The planimetric, property, and topographic information shown on this map is based on copyrighted Map Products from the Montgomery County Department of Park and Planning of the Maryland-National Capital Park and Planning Commission, and may not be copied or reproduced without written permission from M-NCPPC.

Property lines are compiled by adjusting the property lines to topography created from aerial photography and should not be interpreted as actual field surveys. Planimetric features were compiled from 1:14400 scale aerial photography using stereo photogrammetric methods.

This map is created from a variety of data sources, and may not reflect the most current conditions in any one location and may not be completely accurate or up to date. All map features are approximately within five feet of their true location. This map may not be the same as a map of the same area plotted at an earlier time as the data is continuously updated. Use of this map, other than for general planning purposes is not recommended. - Copyright 1998





SOIL ANALYSIS

LOT	SOIL TYPE	PERCENTAGE
1	SH-1	100%
2	SH-2	100%
3	SH-3	100%
4	SH-4	100%
5	SH-5	100%
6	SH-6	100%
7	SH-7	100%
8	SH-8	100%
9	SH-9	100%
10	SH-10	100%
11	SH-11	100%
12	SH-12	100%
13	SH-13	100%
14	SH-14	100%
15	SH-15	100%
16	SH-16	100%
17	SH-17	100%
18	SH-18	100%
19	SH-19	100%
20	SH-20	100%

ORDINANCE REFERENCES

SECTION 10-101, SUBSECTION 10-101.01, MONTGOMERY COUNTY ZONING ORDINANCE

SECTION 10-101, SUBSECTION 10-101.02, MONTGOMERY COUNTY ZONING ORDINANCE

SECTION 10-101, SUBSECTION 10-101.03, MONTGOMERY COUNTY ZONING ORDINANCE

SECTION 10-101, SUBSECTION 10-101.04, MONTGOMERY COUNTY ZONING ORDINANCE

SECTION 10-101, SUBSECTION 10-101.05, MONTGOMERY COUNTY ZONING ORDINANCE

SECTION 10-101, SUBSECTION 10-101.06, MONTGOMERY COUNTY ZONING ORDINANCE

SECTION 10-101, SUBSECTION 10-101.07, MONTGOMERY COUNTY ZONING ORDINANCE

SECTION 10-101, SUBSECTION 10-101.08, MONTGOMERY COUNTY ZONING ORDINANCE

SECTION 10-101, SUBSECTION 10-101.09, MONTGOMERY COUNTY ZONING ORDINANCE

SECTION 10-101, SUBSECTION 10-101.10, MONTGOMERY COUNTY ZONING ORDINANCE

OWNER'S CERTIFICATE

I, the undersigned, being the owner of the above described property, hereby certify that the information furnished herein is true and correct to the best of my knowledge and belief.

SIGNED AND SEALED:

DATE: 11/11/11

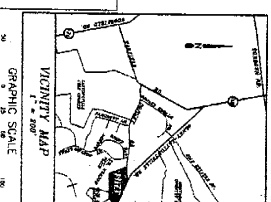
NAME: [Name]

ADDRESS: [Address]

CITY: [City]

STATE: [State]

ZIP: [ZIP]



NO.	DATE	BY	DESCRIPTION
1	11/11/11	CPJ	PRELIMINARY PLAN
2	11/11/11	CPJ	REVISIONS
3	11/11/11	CPJ	REVISIONS
4	11/11/11	CPJ	REVISIONS
5	11/11/11	CPJ	REVISIONS
6	11/11/11	CPJ	REVISIONS
7	11/11/11	CPJ	REVISIONS
8	11/11/11	CPJ	REVISIONS
9	11/11/11	CPJ	REVISIONS
10	11/11/11	CPJ	REVISIONS
11	11/11/11	CPJ	REVISIONS
12	11/11/11	CPJ	REVISIONS
13	11/11/11	CPJ	REVISIONS
14	11/11/11	CPJ	REVISIONS
15	11/11/11	CPJ	REVISIONS
16	11/11/11	CPJ	REVISIONS
17	11/11/11	CPJ	REVISIONS
18	11/11/11	CPJ	REVISIONS
19	11/11/11	CPJ	REVISIONS
20	11/11/11	CPJ	REVISIONS

PRELIMINARY PLAN

GRIFFITH PROPERTY

LAYTONSVILLE (1st) ELECTION DISTRICT

MONTGOMERY COUNTY, MARYLAND

CPJ Associates

Charles P. Johnson & Associates, Inc.

PLANNERS • ARCHITECTS • LANDSCAPE ARCHITECTS • SURVEYORS

10000 WOODBURN ROAD, SUITE 100, WOODBURN, MARYLAND 21786

PHONE: (301) 261-1111 FAX: (301) 261-1112

WWW.CPJASSOCIATES.COM

PC&A

Planning & Architecture, Inc.

8813 Sandy Green Court

WINDY HILLS, MARYLAND 21791

(301) 948-8888

CPJ Associates

Charles P. Johnson & Associates, Inc.

PLANNERS • ARCHITECTS • LANDSCAPE ARCHITECTS • SURVEYORS

10000 WOODBURN ROAD, SUITE 100, WOODBURN, MARYLAND 21786

PHONE: (301) 261-1111 FAX: (301) 261-1112

WWW.CPJASSOCIATES.COM