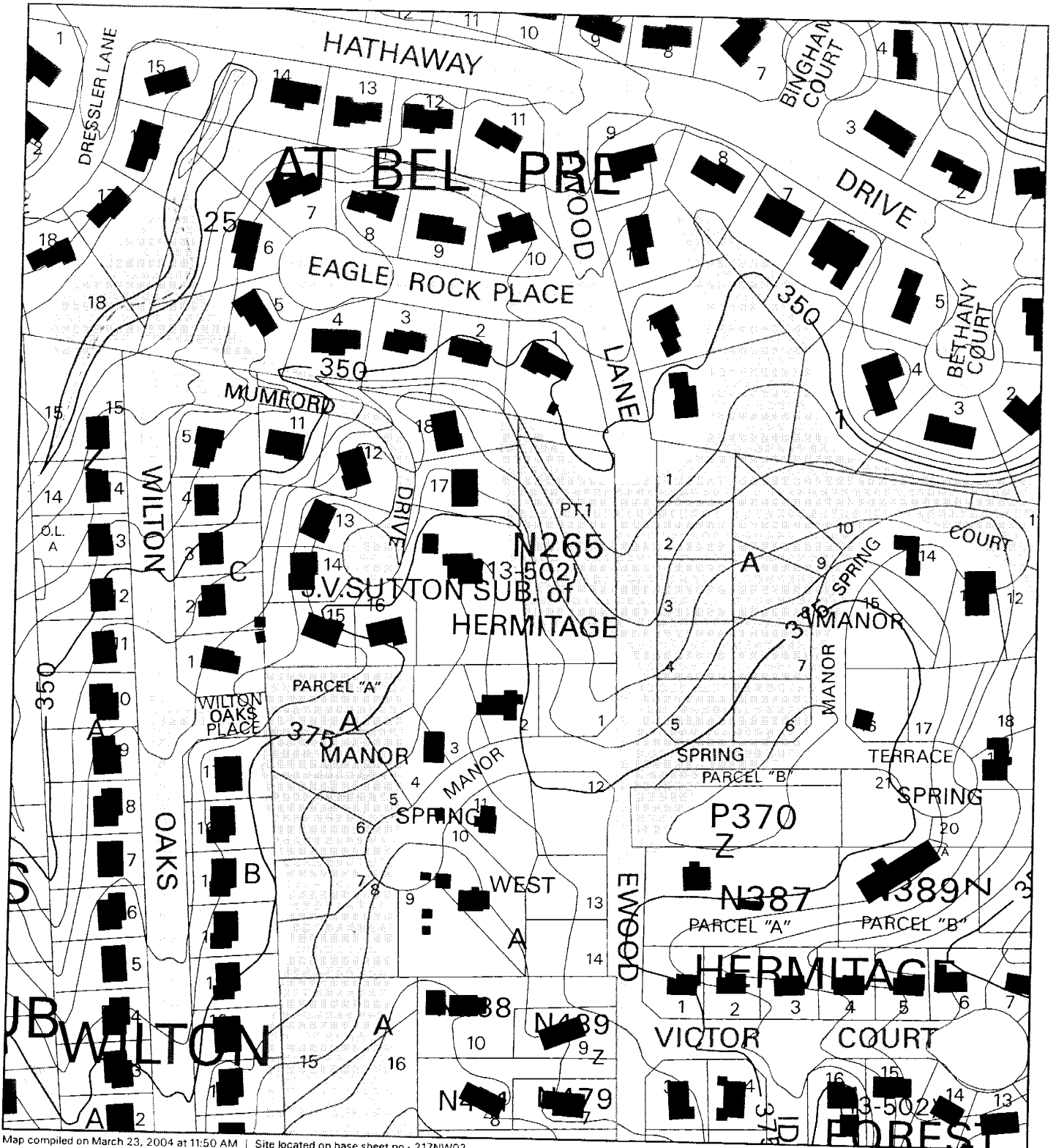


# HERMITAGE (1-04065)



Map compiled on March 23, 2004 at 11:50 AM | Site located on base sheet no - 217NW02

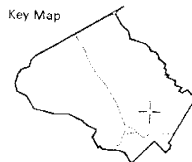
**NOTICE**

The planimetric, property, and topographic information shown on this map is based on copyrighted Map Products from the Montgomery County Department of Park and Planning of the Maryland-National Capital Park and Planning Commission, and may not be copied or reproduced without written permission from M-NCPPC.

Property lines are compiled by adjusting the property lines to topography created from aerial photography and should not be interpreted as actual field surveys. Planimetric features were compiled from 1:14400 scale aerial photography using stereo photogrammetric methods.

This map is created from a variety of data sources, and may not reflect the most current conditions in any one location and may not be completely accurate or up to date. All map features are approximately within five feet of their true location. This map may not be the same as a map of the same area plotted at an earlier time as the data is continuously updated. Use of this map, other than for general planning purposes is not recommended. - Copyright 1998

Key Map



N



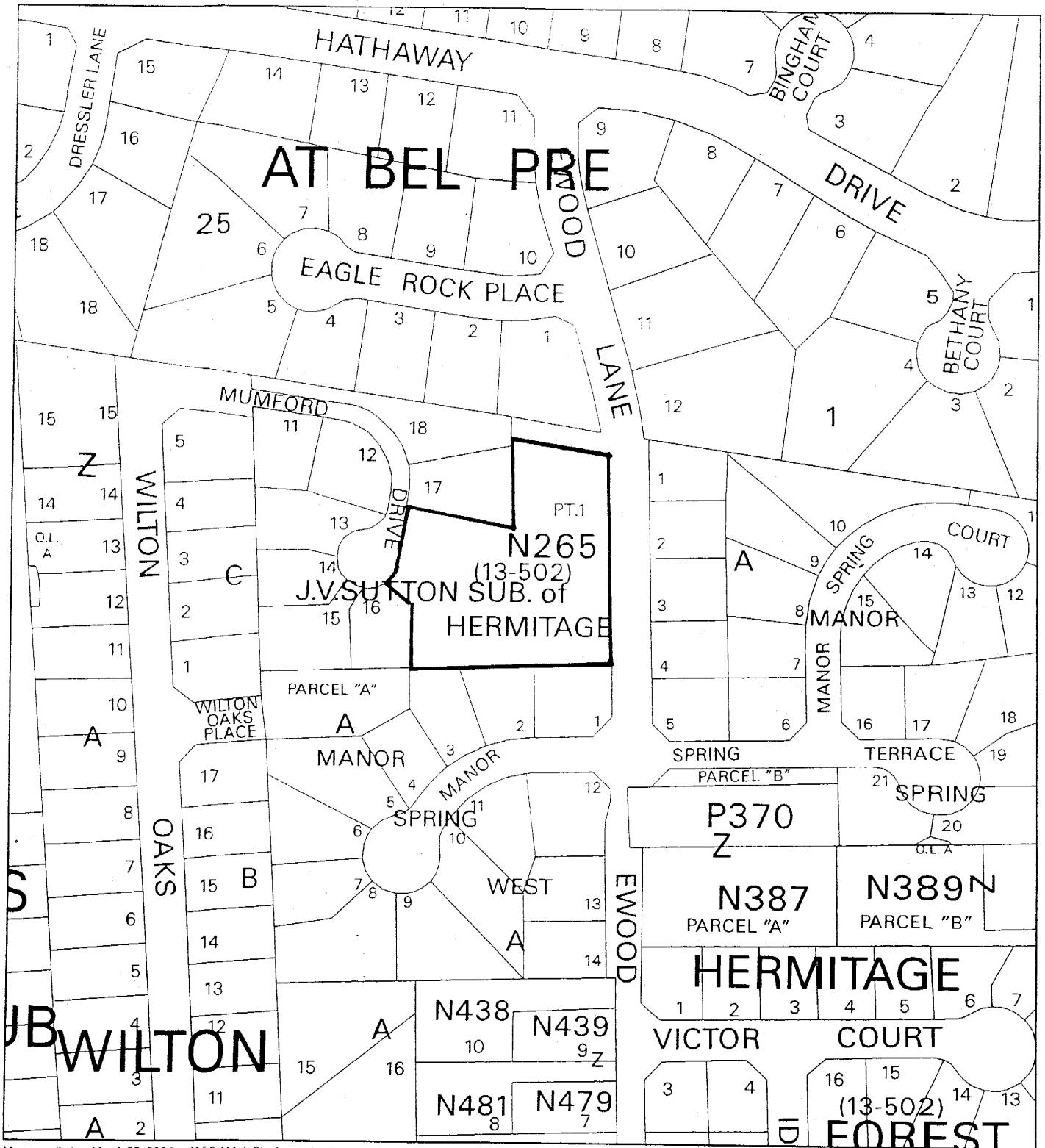
Research & Technology Center



1 inch = 200 feet  
1 : 2400

6

# HERMITAGE (1-04065)



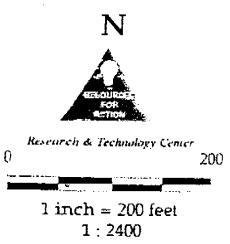
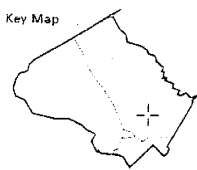
Map compiled on March 23, 2004 at 11:52 AM | Site located on base sheet no - 217NW02

## NOTICE

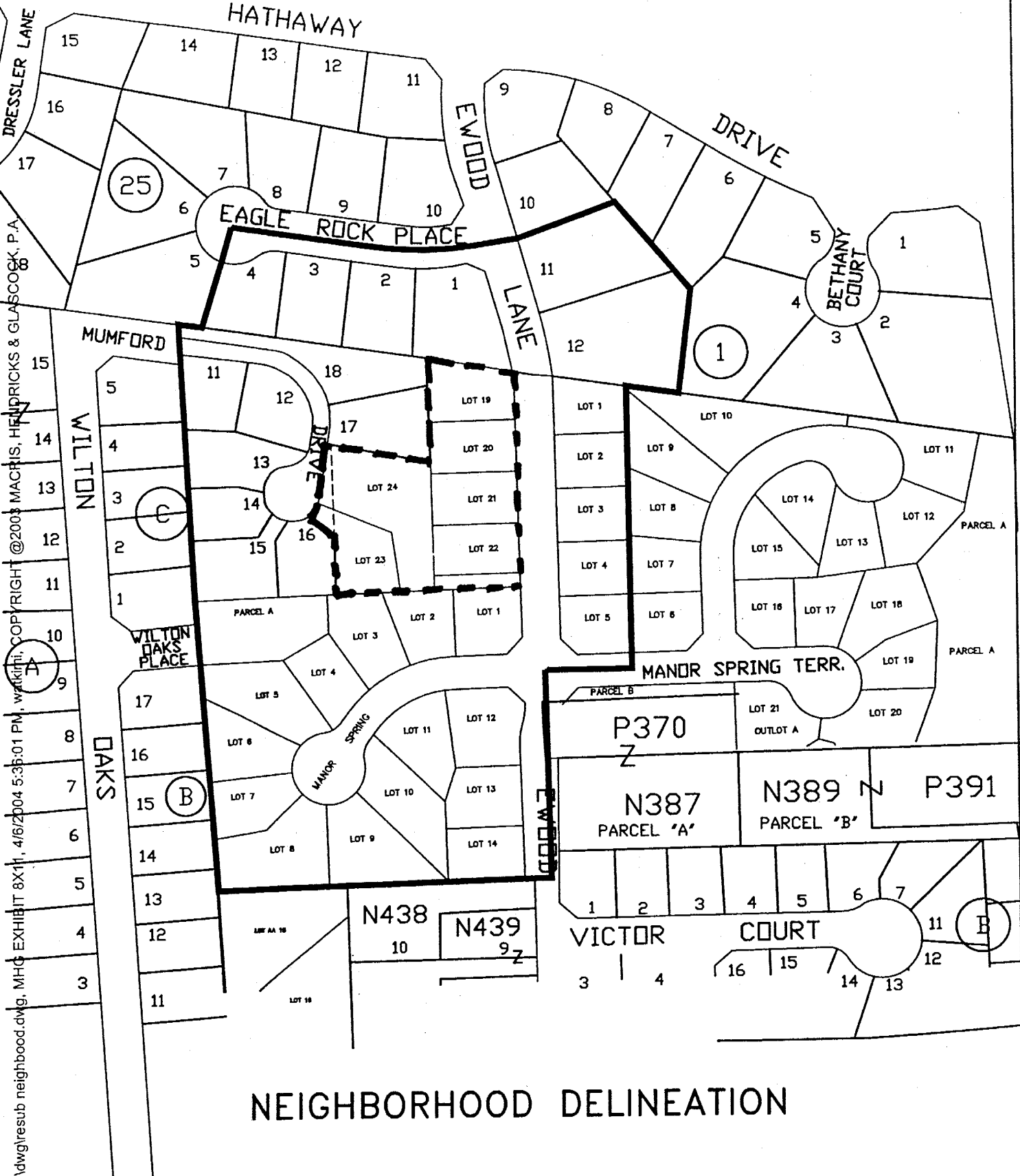
The planimetric, property, and topographic information shown on this map is based on copyrighted Map Products from the Montgomery County Department of Park and Planning of the Maryland -National Capital Park and Planning Commission, and may not be copied or reproduced without written permission from M-NCPPC.

Property lines are compiled by adjusting the property lines to topography created from aerial photography and should not be interpreted as actual field surveys. Planimetric features were compiled from 1:14400 scale aerial photography using stereo photogrammetric methods.

This map is created from a variety of data sources, and may not reflect the most current conditions in any one location and may not be completely accurate or up to date. All map features are approximately within five feet of their true location. This map may not be the same as a map of the same area plotted at an earlier time as the data is continuously updated. Use of this map, other than for general planning purposes is not recommended. - Copyright 1998



(7)



I:\99326\dwg\resub\_neighborhood.dwg, MHG EXHIBIT 8X11, 4/6/2004 5:35:01 PM, W:\k\h\h, COPYRIGHT © 2003 MACRIS, HENDRICKS & GLASCOCK, P.A.

# NEIGHBORHOOD DELINEATION


**MHG**  
 9220 Wightman Road, Suite 120  
 Montgomery Village, Maryland  
 20886-1279

Macris, Hendricks & Glascock, P.A.  
 Engineers • Planners  
 Landscape Architects • Surveyors

Phone 301.670.0840  
 Fax 301.948.0693  
 www.mhgpa.com

JOB NO. 99.326.50