

FREEMONT ONE ASSOC., LLC
PLAT BK 152 PARCEL 4
LIBER 16773 PLAT NO. 17286
FOLIO 486

CHANCELLOR MEDIA CORP. OF THE CAPITAL CITY
PARCEL 960
LIBER 15928 FOLIO 738

PARCEL 915, TAX MAP 14P61
M.N.C.P. & P. COMMISSION
LIBER 658 FOLIO 34

PARCEL 116, TAX MAP 14P63
OWNER: MONTGOMERY COUNTY, MARYLAND
LIBER 1988 AREA: 780,993 SF
ZONING: R-80
1502 BROOKVILLE ROAD SERVICE DEPOT

① Off-Site Drainage To Ex.
Outfall = 0.84 Ac.

⑥ Off-Site Drainage To Ex.
Outfall = 1.81 Ac.

⑦ Off-Site Drainage To Ex.
Yard Inlet = 4.21 Ac.

② On-Site Drainage To Ex.
Outfall = 0.19 Ac.

⑤ On-Site Drainage To Ex.
SWM Pond = 17.45 Ac.

Ex. Outfall
1.39 Ac. On-Site

Ex. Bus Parking

Ex. Yard Inlet

On-Site Outfall

Ex. Leaf Storage Area

Ex. Bus Maintenance Parking

ROCK CREEK PARK

Brookville Road Service Park
EXISTING DRAINAGE

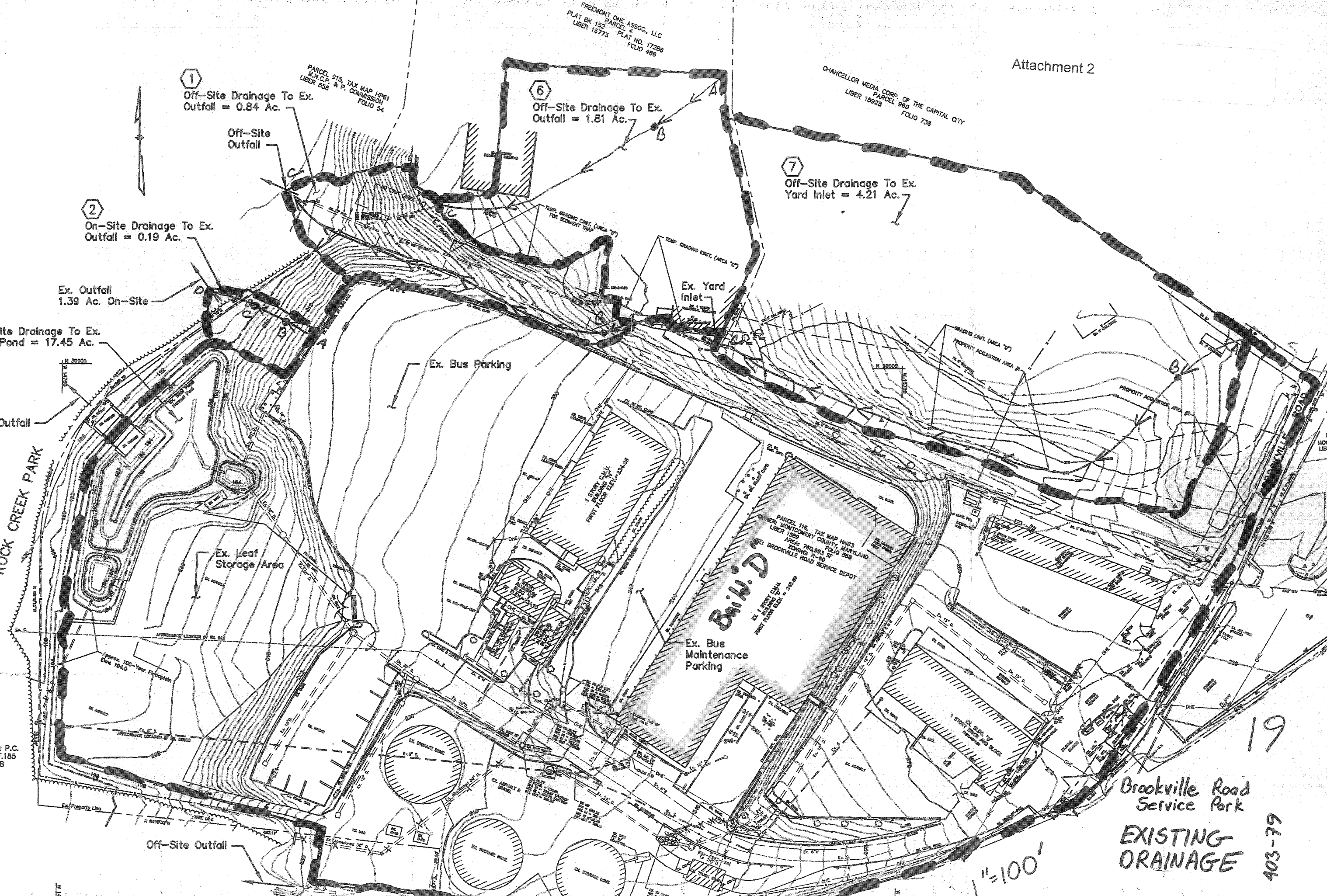
M.N.C.P. & P.C.
L.568 F.185
PART B

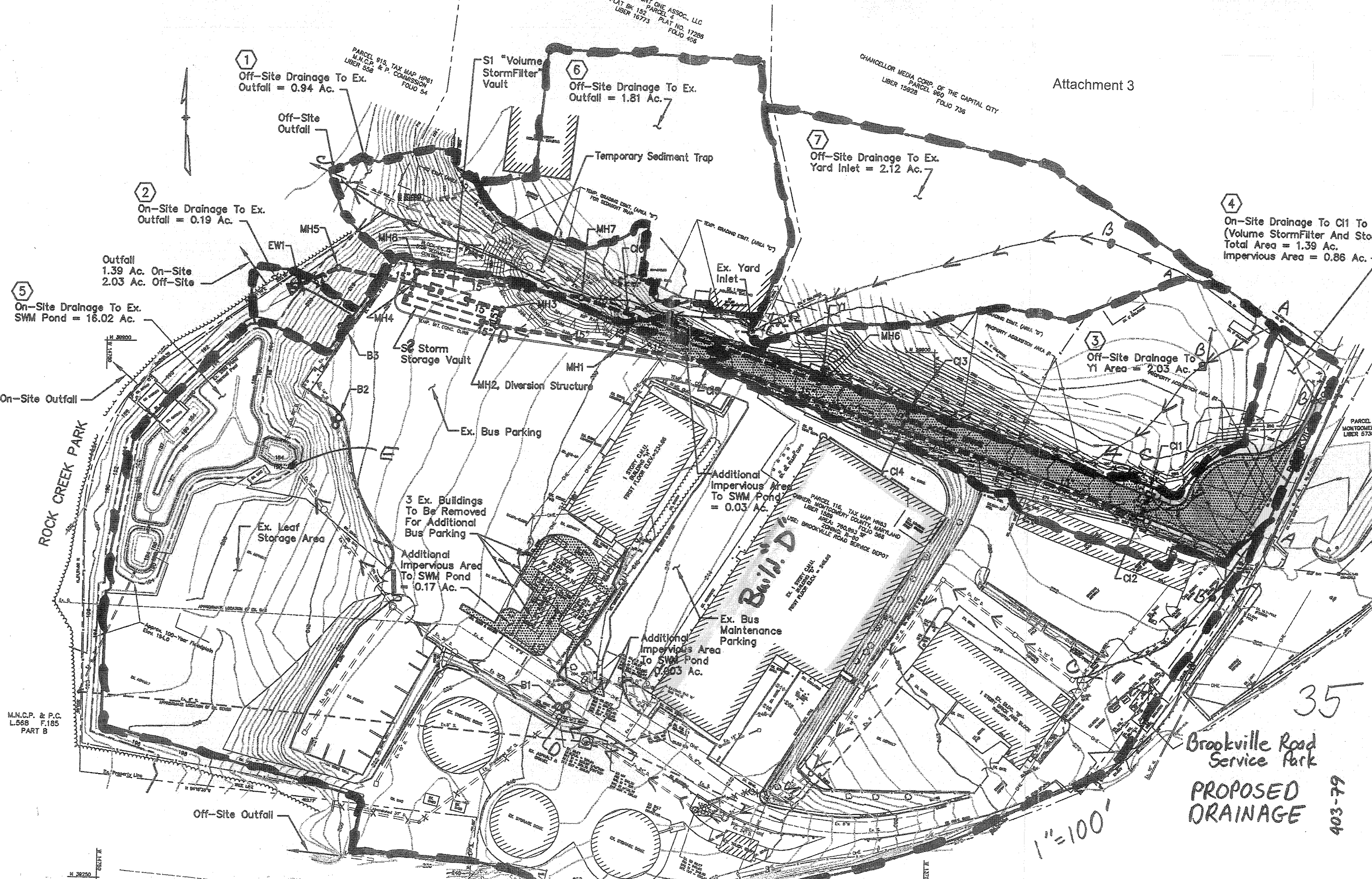
Off-Site Outfall

1"=100'

19

403-79





① Off-Site Drainage To Ex.
Outfall = 0.94 Ac.

⑥ Off-Site Drainage To Ex.
Outfall = 1.81 Ac.

⑦ Off-Site Drainage To Ex.
Yard Inlet = 2.12 Ac.

④ On-Site Drainage To C11 To C
(Volume StormFilter And Stor)
Total Area = 1.39 Ac.
Impervious Area = 0.86 Ac.

② On-Site Drainage To Ex.
Outfall = 0.19 Ac.

⑤ On-Site Drainage To Ex.
SWM Pond = 16.02 Ac.

③ Off-Site Drainage To
Y1 Area = 2.03 Ac.

3 Ex. Buildings
To Be Removed
For Additional
Bus Parking

Additional
Impervious Area
To SWM Pond
= 0.17 Ac.

Additional
Impervious Area
To SWM Pond
= 0.03 Ac.

Additional
Impervious Area
To SWM Pond
= 0.203 Ac.

Brookville Road
Service Park

PROPOSED
DRAINAGE

35

903-79

1"=100'

M.N.C.P. & P.C.
L.568 F.185
PART B

PLAT BK 152 PARCEL 4
LIBER 16773 PLAT NO. 17285
FOLIO 405

PARCEL 915, TAX MAP H181
M.N.C.P. & P.C. COMMISSION
FOLIO 54

CHANCELLOR MEDIA CORP. OF THE CAPITAL CITY
PARCEL 960 FOLIO 736
LIBER 15928

PARCEL 7
MONTGOMERY
LIBER 5738

N 38250